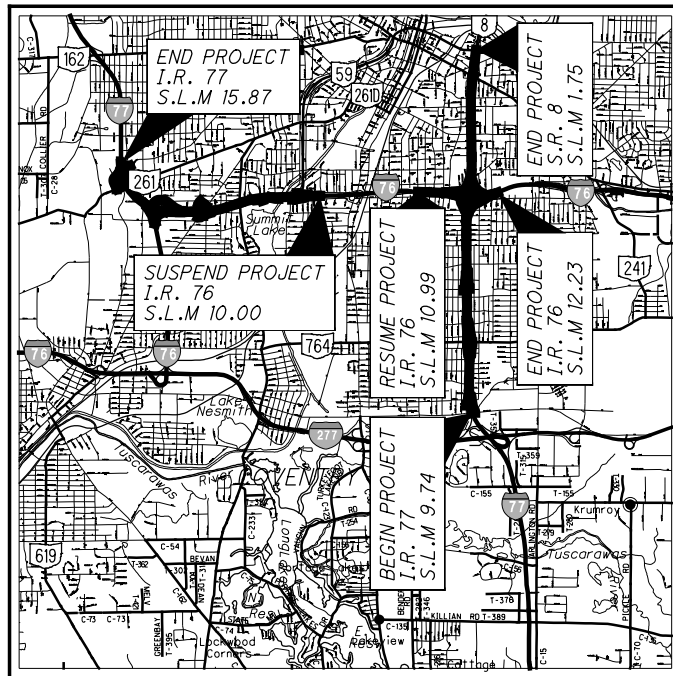


pw:\VANVAIP\WINTO\parsons.com:Ohio State\Documents\DB-Akron_Beltway_Rehab\0 - Design\02329_Roadway_Sheets\BU-25B\02329_GTOOL_BU-25B.dgn_Sheet 6/30/2021 3:43:26 PM ekistel



LOCATION MAP

LATITUDE: 41° 03' 43" LONGITUDE: 81° 30' 17"



PORTION TO BE IMPROVED	—————	▬▬▬
INTERSTATE HIGHWAY	—————	▬▬▬▬▬
FEDERAL ROUTES	—————	▬▬▬▬▬▬▬
STATE ROUTES	—————	▬▬▬▬▬▬▬▬▬
COUNTY & TOWNSHIP ROADS	—————	▬▬▬▬▬▬▬▬▬▬▬
OTHER ROADS	—————	▬▬▬▬▬▬▬▬▬▬▬▬▬

DESIGN DESIGNATION

SEE BU-19

DESIGN EXCEPTIONS

NONE

UNDERGROUND UTILITIES
 Contact Two Working Days
 Before You Dig


 Before You Dig

OHIO811, 8-1-1, or 1-800-362-2764
 (Non-members must be called directly)

PLAN PREPARED BY:



ENGINEERS SEAL:



SIGNED: [Signature]
 DATE: 6/30/21

STATE OF OHIO
 DEPARTMENT OF TRANSPORTATION

SUM-76-8.24
SUM-77-9.74
SUM-8-0.00

CITY OF AKRON
SUMMIT COUNTY

INDEX OF SHEETS:

TITLE SHEET	1
REMOVAL PLAN - S.R. 8	2 - 5

SEE BU-02A AND BU-02B FOR MAINTENANCE OF TRAFFIC
 SEE BU-14 FOR STRUCTURES
 SEE BU-17 FOR RAMP Q SHOULDER BARRIER AND GRADING
 SEE BU-19 FOR SCHEMATIC
 SEE BU-28A FOR ROADWAY NORTH OF BEACON
 SEE BU-28B FOR ROADWAY SOUTH OF BEACON
 SEE BU-33A & BU-33B FOR CENTRAL INTERCHANGE
 SEE BU-36 FOR LIGHTING/ITS
 SEE BU-39 FOR TRAFFIC CONTROL

STANDARD CONSTRUCTION DRAWINGS				SUPPLEMENTAL SPECIFICATIONS	SPECIAL PROVISIONS
				800-2019 10/16/20	

Released for Construction
 Thomas J Powell, PE
 07/01/2021

ISSUE RECORD BU-25B REMOVALS		
NO.	DATE	DESCRIPTION

PROJECT DESCRIPTION


PAVEMENT REPLACEMENT OVER SUM - I.R. 76 FROM S.L.M. 8.24 TO 10.00, SUM - 77 FROM S.L.M. 9.74 TO 11.54, AND SUM - 8 FROM S.L.M. 0.00 TO 1.75. COVERS THE "SOUTH LEG" AND "WEST LEG", INCLUDES REHABILITATION OF SEVERAL STRUCTURES IN THE CITY OF AKRON, SUMMIT COUNTY, OHIO.

LIMITED ACCESS

THIS IMPROVEMENT IS ESPECIALLY DESIGNED FOR THROUGH TRAFFIC AND HAS BEEN DECLARED A LIMITED ACCESS HIGHWAY OR FREEWAY BY ACTION OF THE DIRECTOR IN ACCORDANCE WITH THE PROVISIONS OF SECTION 5511.02 OF THE OHIO REVISED CODE.

2019 SPECIFICATIONS

THE STANDARD SPECIFICATIONS OF THE STATE OF OHIO, DEPARTMENT OF TRANSPORTATION, INCLUDING SUPPLEMENTAL SPECIFICATIONS LISTED IN THE PLANS AND CHANGES LISTED IN THE PROPOSAL SHALL GOVERN THIS IMPROVEMENT.


AKRON BELTWAY JV
BU-25B
REMOVALS

PHASE 1B
RFC PLANS

JUNE 30, 2021

2021-06-30 - BU 25B - RFC

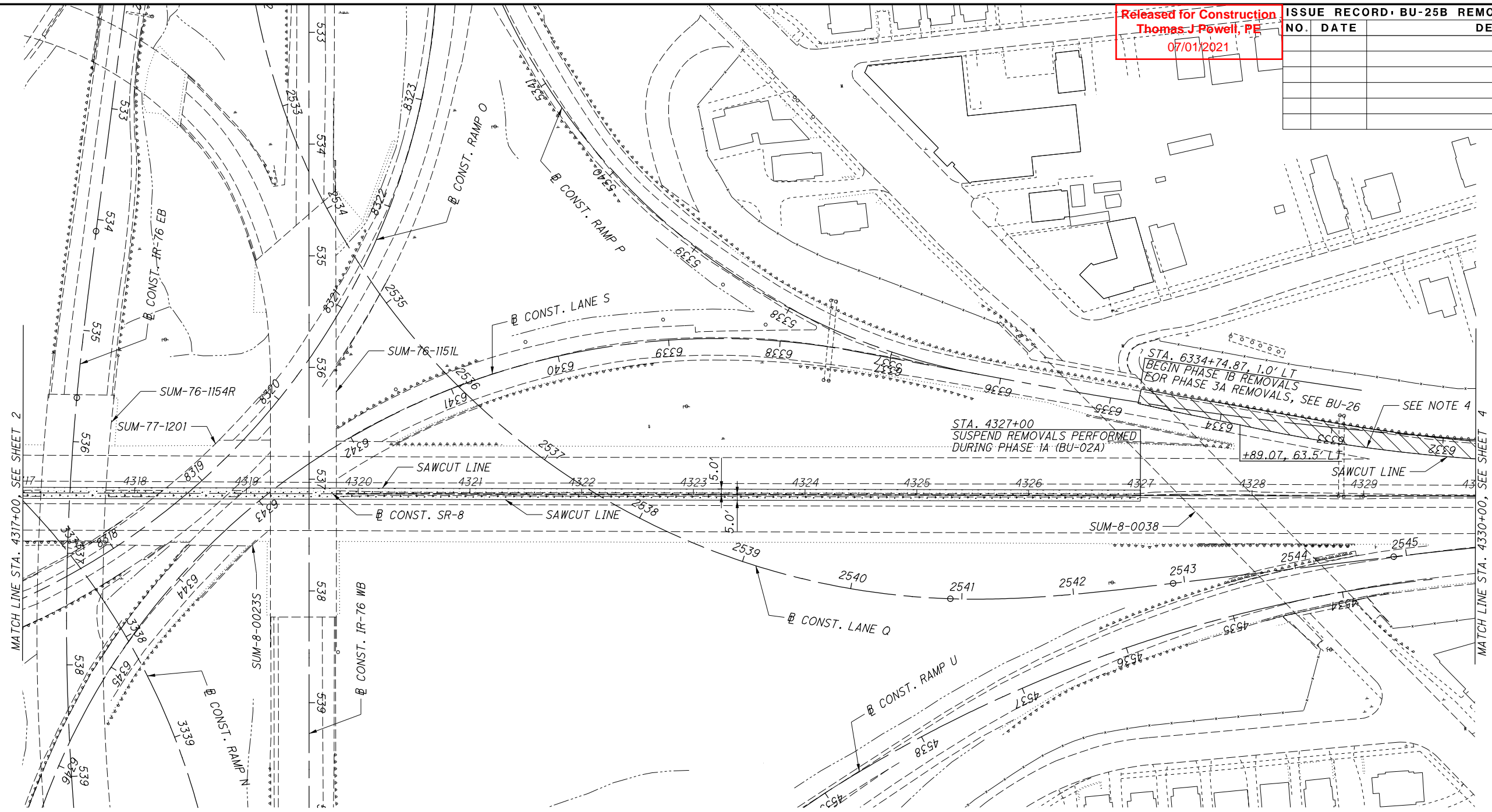
FEDERAL PROJECT NO.	E180(428)
PID NO.	102329
CONSTRUCTION PROJECT NO.	21-3000
RAILROAD INVOLVEMENT	NONE
STATE PROJECT NO.	SUM-76 / 77 / 8 - 8.24 / 9.74 / 0.00
DATE	1/5

Released for Construction
 Thomas J. Powell, PE
 07/01/2021

ISSUE RECORD: BU-25B REMOVALS

NO.	DATE	DESCRIPTION

CALCULATED AA
 CHECKED EAK
 0 50 100
 HORIZONTAL SCALE IN FEET



- NOTES:
- SEE MOT PLANS PHASE 1A AND 1B FOR ADDITIONAL DETAILS.
 - FOR MORE SPECIFIC REMOVAL WORK RELATED TO A STRUCTURE, SEE THE APPROPRIATE INDIVIDUAL STRUCTURE PLAN.
 - ALTHOUGH PAVEMENT REMOVALS ARE DEPICTED HEREIN, ADDITIONAL REMOVALS WITHIN THE CONSTRUCTION LIMITS SHALL INCLUDE, BUT NOT LIMITED TO: SIGNS & SIGN FOUNDATIONS, DRAINAGE STRUCTURES & PIPES, GUARDRAIL, CONCRETE BARRIER, LIGHT POLES & FOUNDATIONS, AND FENCING.
 - SEE BU-2B FOR BARRIER OFFSETS WHICH SHALL GOVERN REMOVAL OFFSETS.

LEGEND:

- PHASE 1A PAVEMENT REMOVAL (SEE BU-25A)
- PHASE 1B PAVEMENT REMOVAL

2021-06-30 - BU 25B - RFC

REMOVAL PLAN - SR-8
 STA. 4317+00.00 TO STA. 4330+00.00

SUM-76/77/8/
 8.24/9.74/0.00

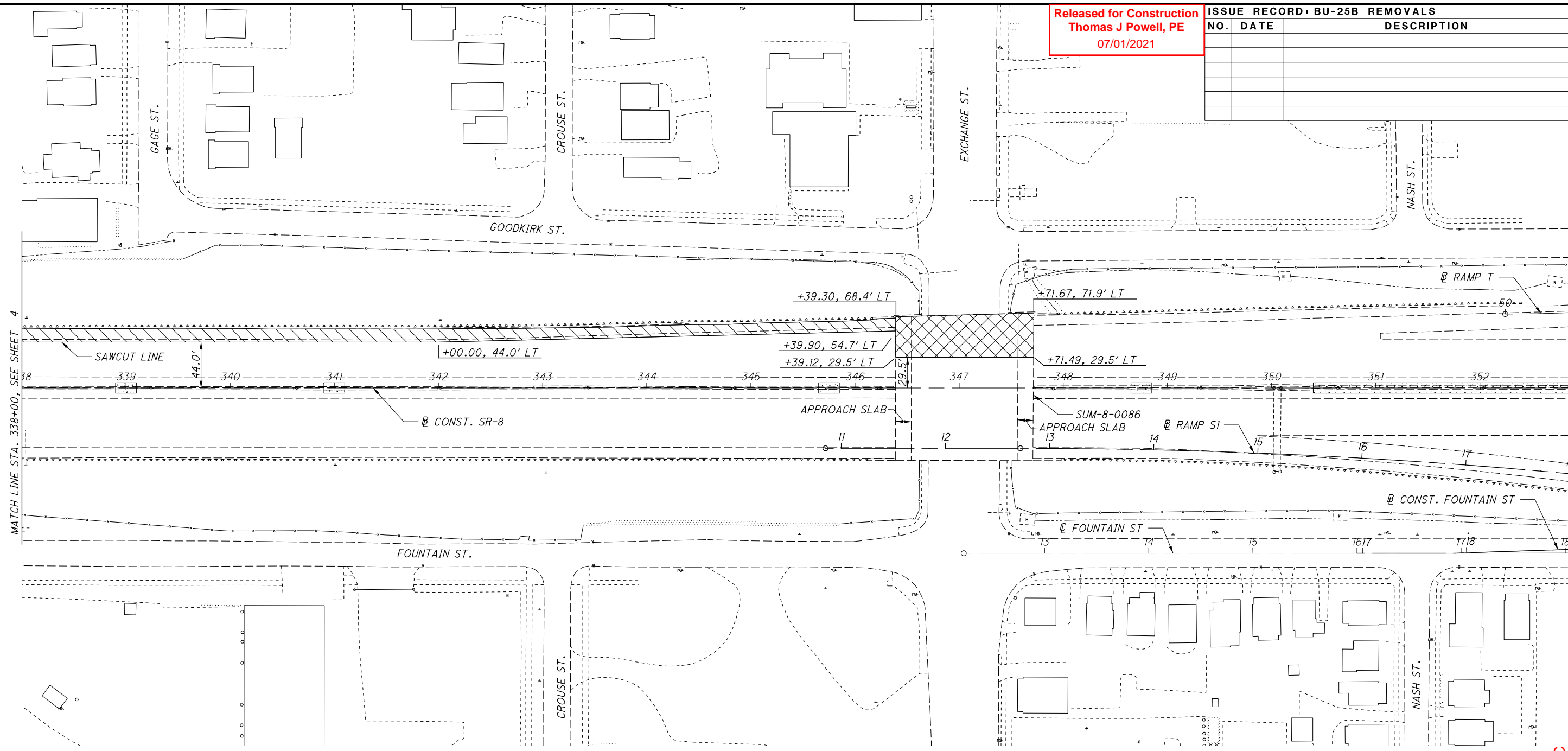
Released for Construction
 Thomas J Powell, PE
 07/01/2021

ISSUE RECORD - BU-25B REMOVALS		
NO.	DATE	DESCRIPTION

CALCULATED
AA

CHECKED
EAK

HORIZONTAL SCALE IN FEET



- NOTES:
1. SEE MOT PLANS PHASE 1A AND 1B FOR ADDITIONAL DETAILS.
 2. FOR MORE SPECIFIC REMOVAL WORK RELATED TO A STRUCTURE, SEE THE APPROPRIATE INDIVIDUAL STRUCTURE PLAN.
 3. ALTHOUGH PAVEMENT REMOVALS ARE DEPICTED HEREIN, ADDITIONAL REMOVALS WITHIN THE CONSTRUCTION LIMITS SHALL INCLUDE, BUT NOT LIMITED TO: SIGNS & SIGN FOUNDATIONS, DRAINAGE STRUCTURES & PIPES, GUARDRAIL, CONCRETE BARRIER, LIGHT POLES & FOUNDATIONS, AND FENCING.

LEGEND:

- PHASE 1B PAVEMENT REMOVAL
- PHASE 1B APPROACH SLAB & STRUCTURE HYDRO-DEMOLITION
- PHASE 1A PAVEMENT REMOVAL (SEE BU-25A)

2021-06-30 - BU 25B - RFC
 REMOVAL PLAN - SR-8
 STA. 338+00.00 TO STA. 352+00.00

SUM-76/77/8/
 8.24/9.74/0.00