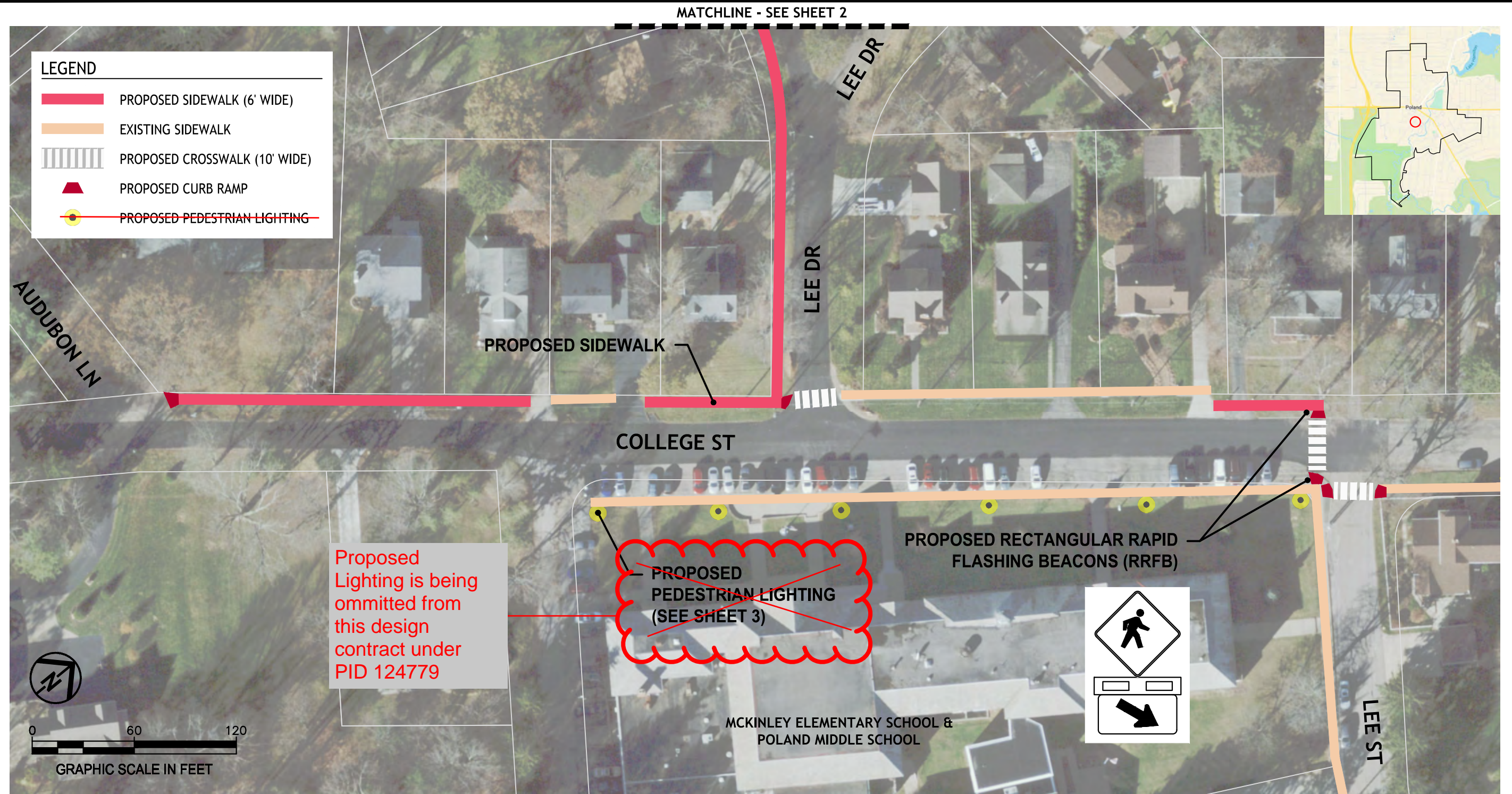


E:\POLAND VILLAGE OF\24-00500-010 SCHOOL TRAVEL PLAN\CADD\PLAN VILLAGE.DWG - 3/6/2025 9:57:59 AM



## PEDESTRIAN IMPROVEMENTS - COLLEGE ST & LEE DR

### VILLAGE OF POLAND PEDESTRIAN SAFETY IMPROVEMENTS SAFE ROUTES TO SCHOOL APPLICATION PROPOSED IMPROVEMENTS (1 OF 8)

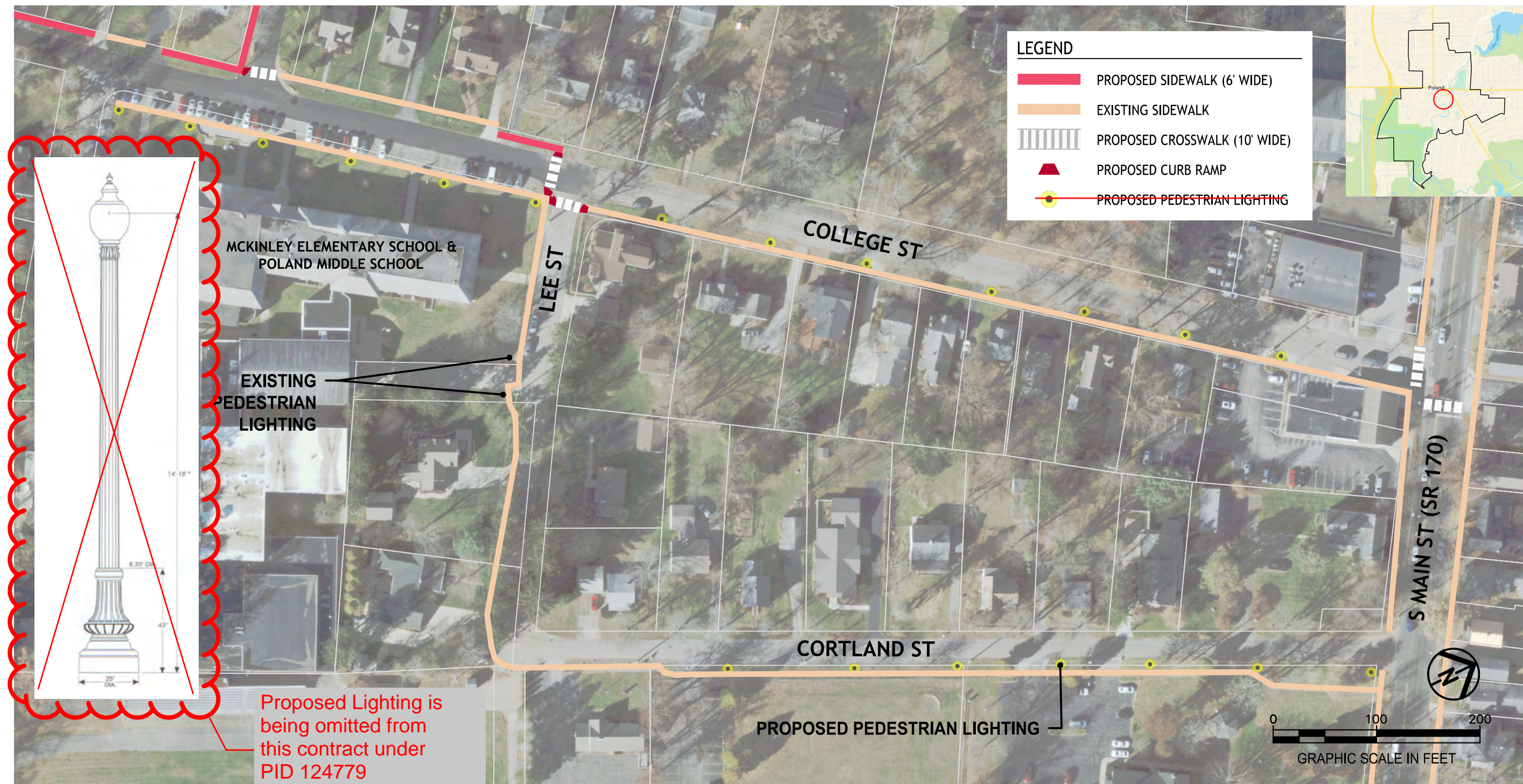


E:\POLAND VILLAGE OF 24-00500-010 SCHOOL TRAVEL PLAN\CAD\ZPLAN VILLAGE.DWG - 3/6/2025 9:58:07 AM



## PEDESTRIAN IMPROVEMENTS - MICHIGAN AVE & OHIO AVE



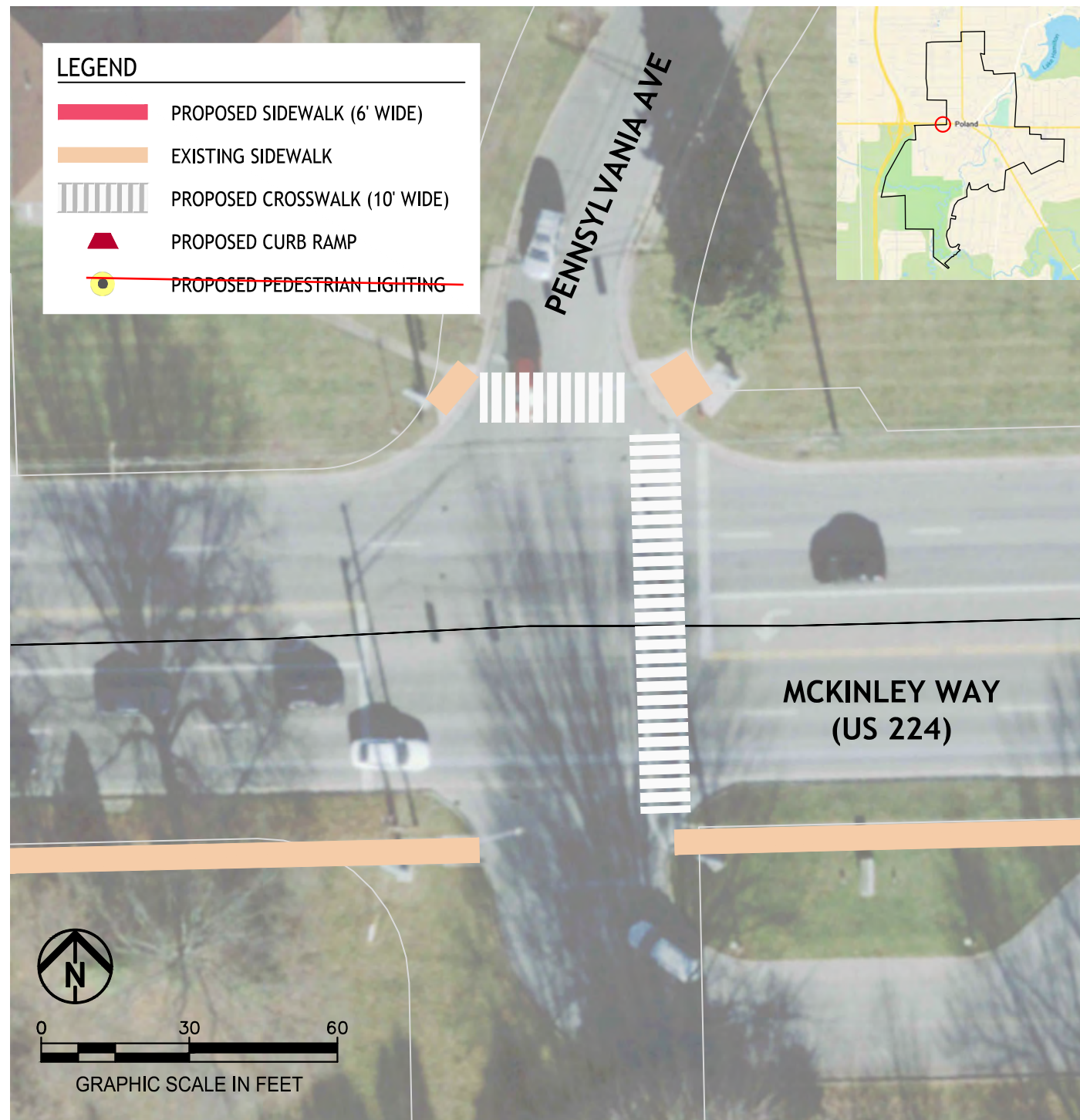


## LIGHTING IMPROVEMENTS - COLLEGE ST & CORTLAND ST

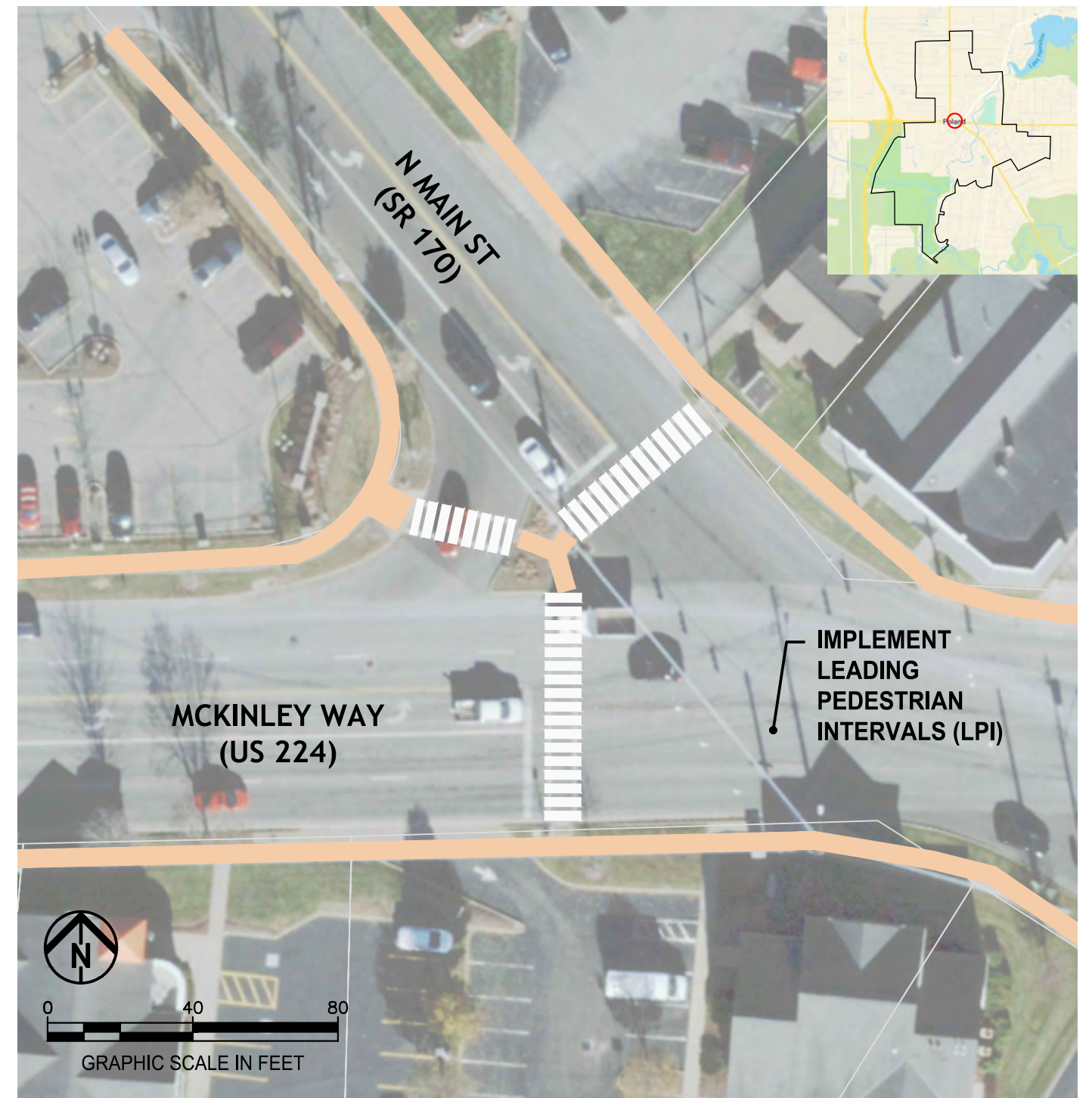
# VILLAGE OF POLAND PEDESTRIAN SAFETY IMPROVEMENTS SAFE ROUTES TO SCHOOL APPLICATION PROPOSED IMPROVEMENTS (3 OF 8)



E:\POLAND VILLAGE OF 24-00500-010 SCHOOL TRAVEL PLAN\CADD\ZPLAN VILLAGE.DWG - 3/6/2025 9:58:21 AM



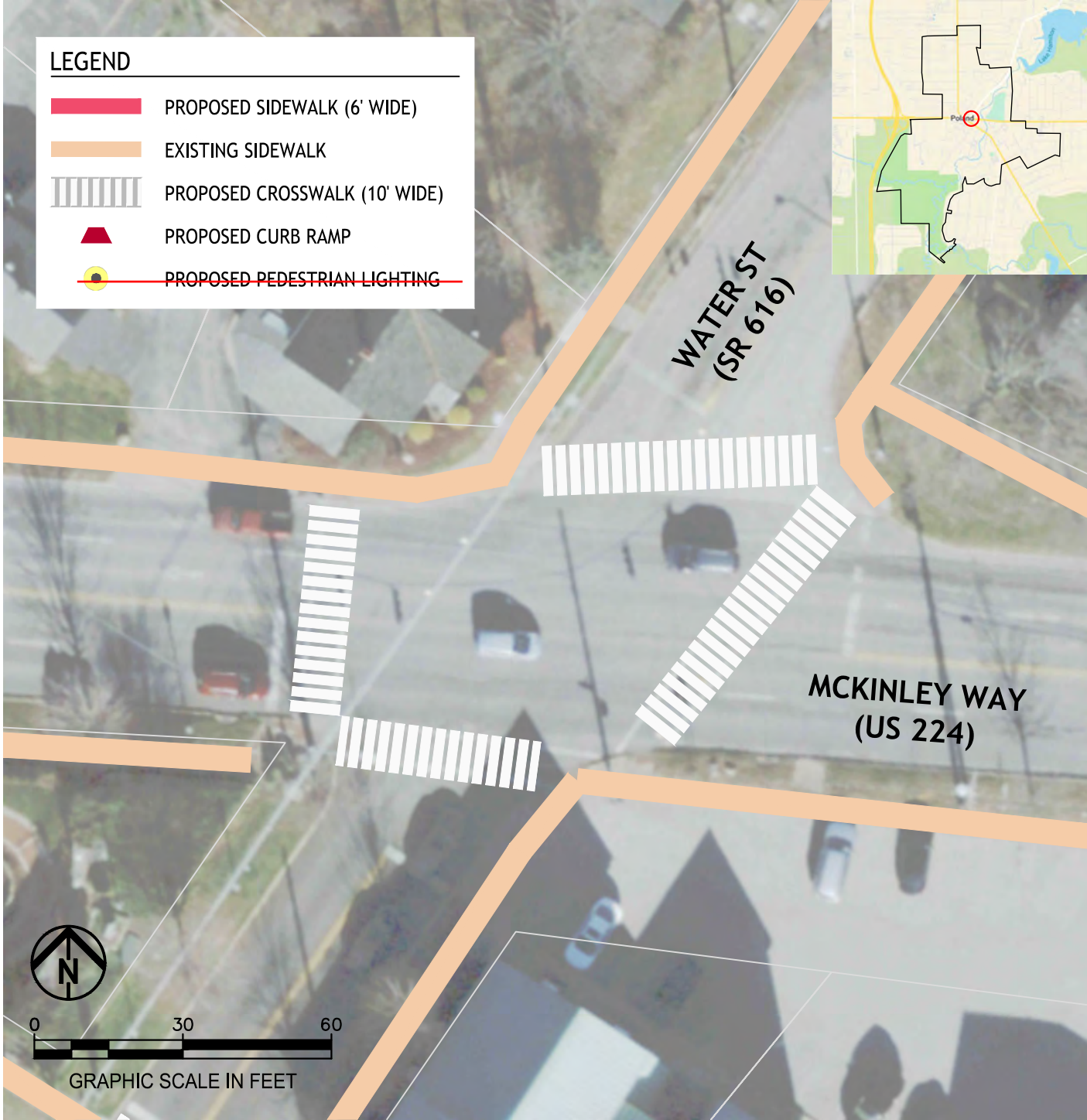
**HIGH-VISIBILITY CROSSWALKS  
MCKINLEY WAY (US 224) & PENNSYLVANIA AVE**



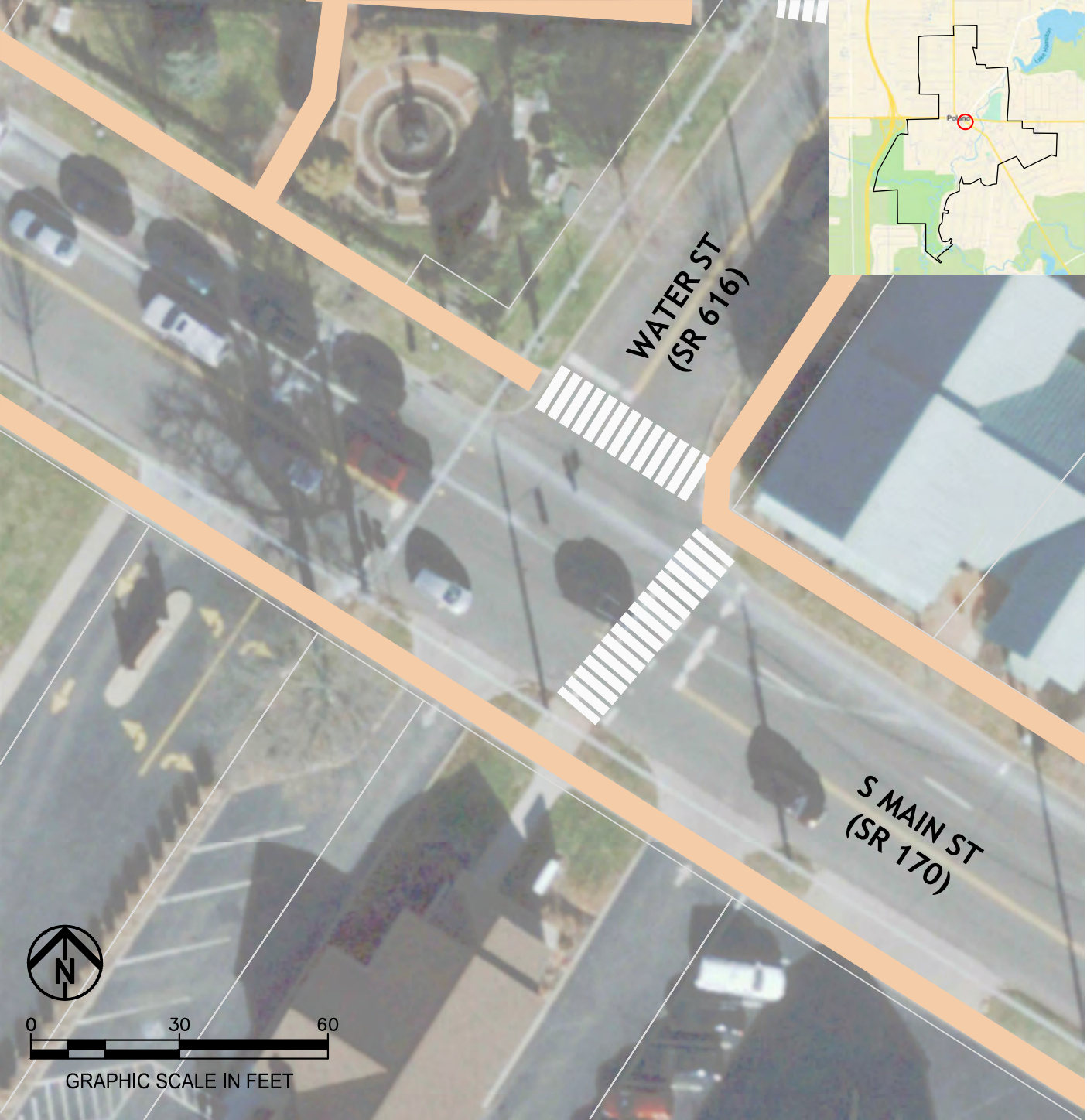
**HIGH-VISIBILITY CROSSWALKS  
MCKINLEY WAY (US 224) & N MAIN ST (SR 170)**



E:\POLAND VILLAGE OF 24-00500-010 SCHOOL TRAVEL PLAN\CAD\ZPLAN VILLAGE.DWG - 3/6/2025 9:58:26 AM



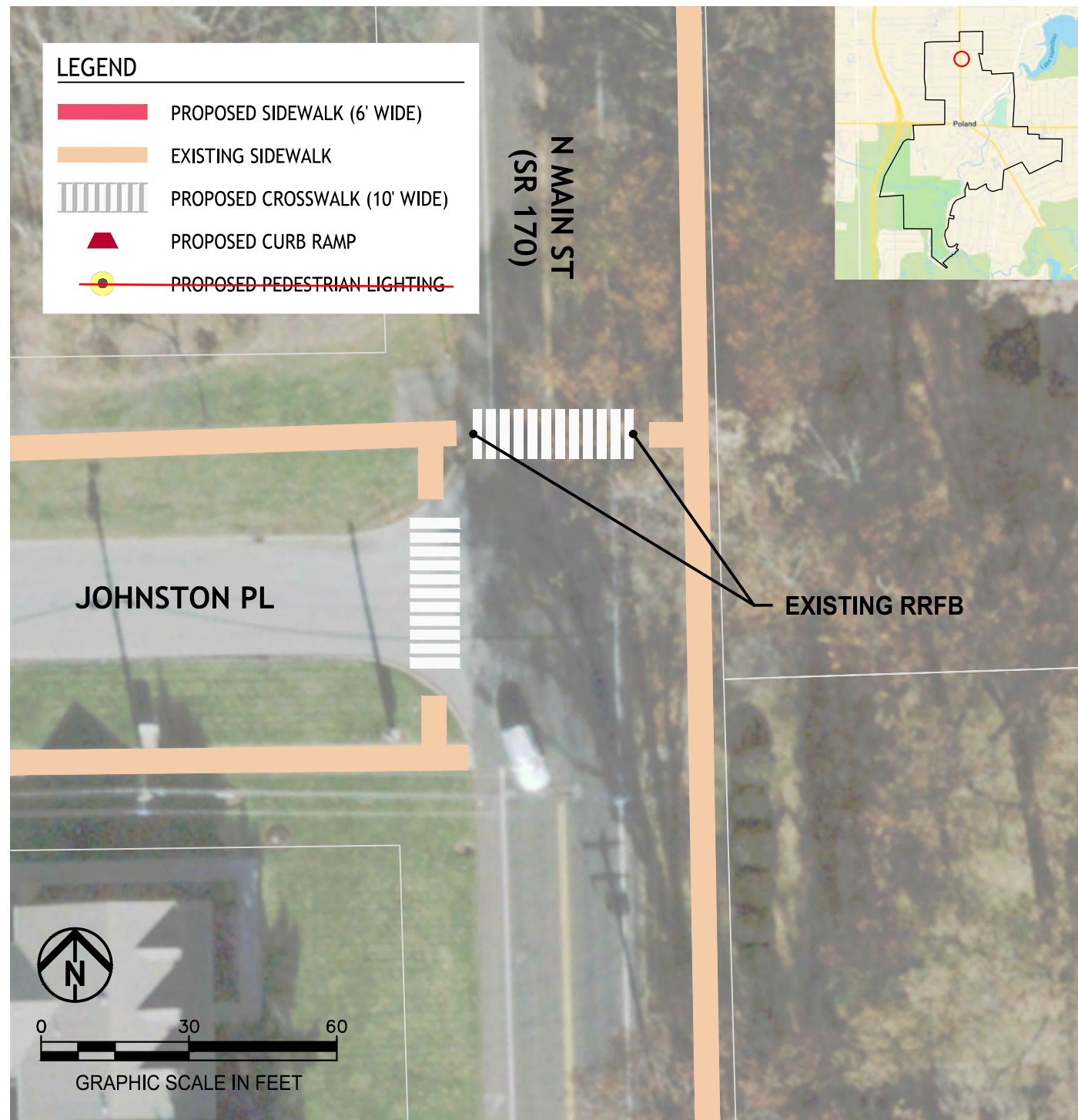
**HIGH-VISIBILITY CROSSWALKS  
MCKINLEY WAY (US 224) & WATER ST (SR 616)**



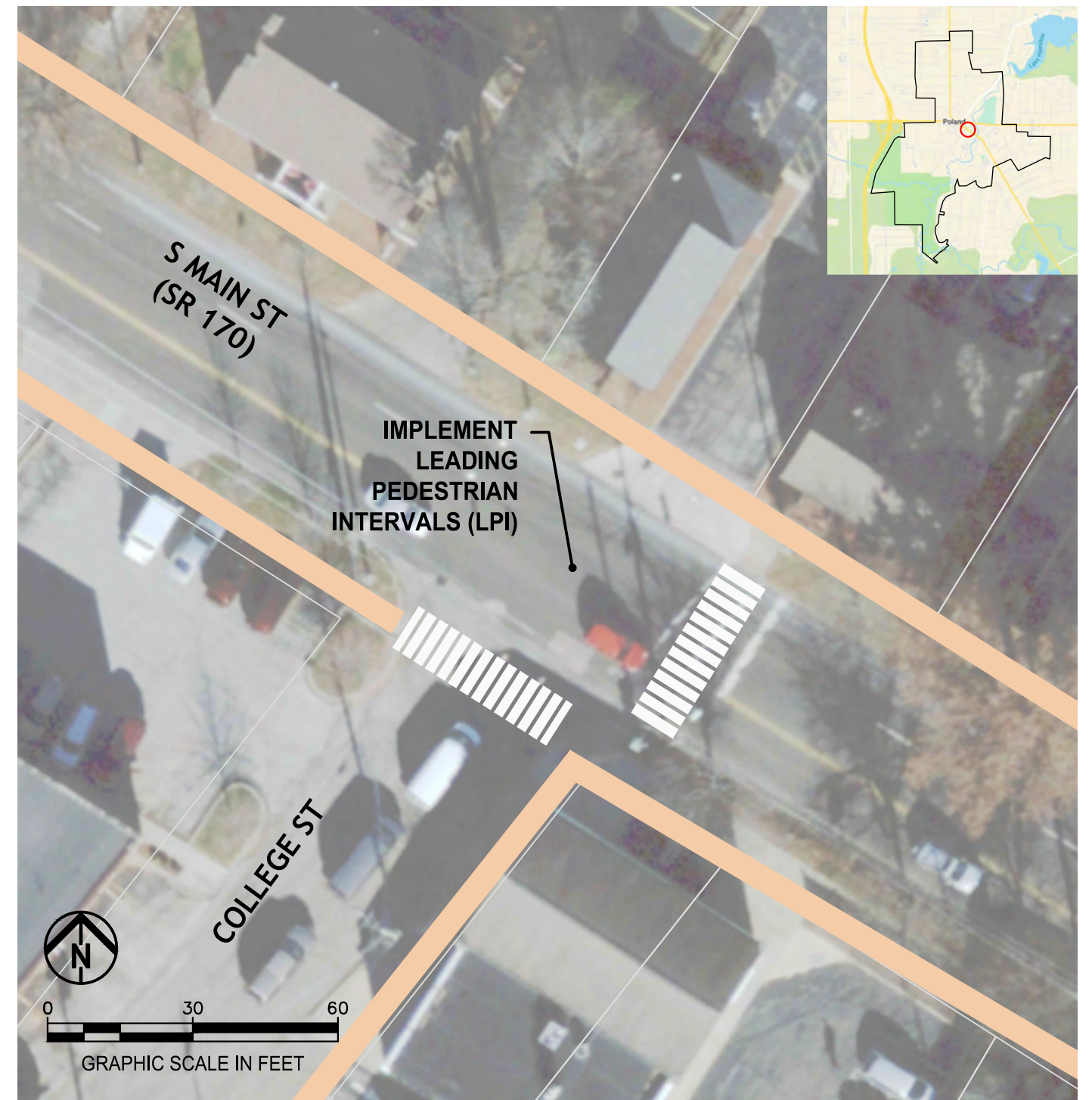
**HIGH-VISIBILITY CROSSWALKS  
S MAIN ST (SR 170) & WATER ST (SR 616)**



E:\POLAND VILLAGE OF 24-00500-010 SCHOOL TRAVEL PLAN\CAD\ZPLAN VILLAGE.DWG - 3/6/2025 9:58:31 AM



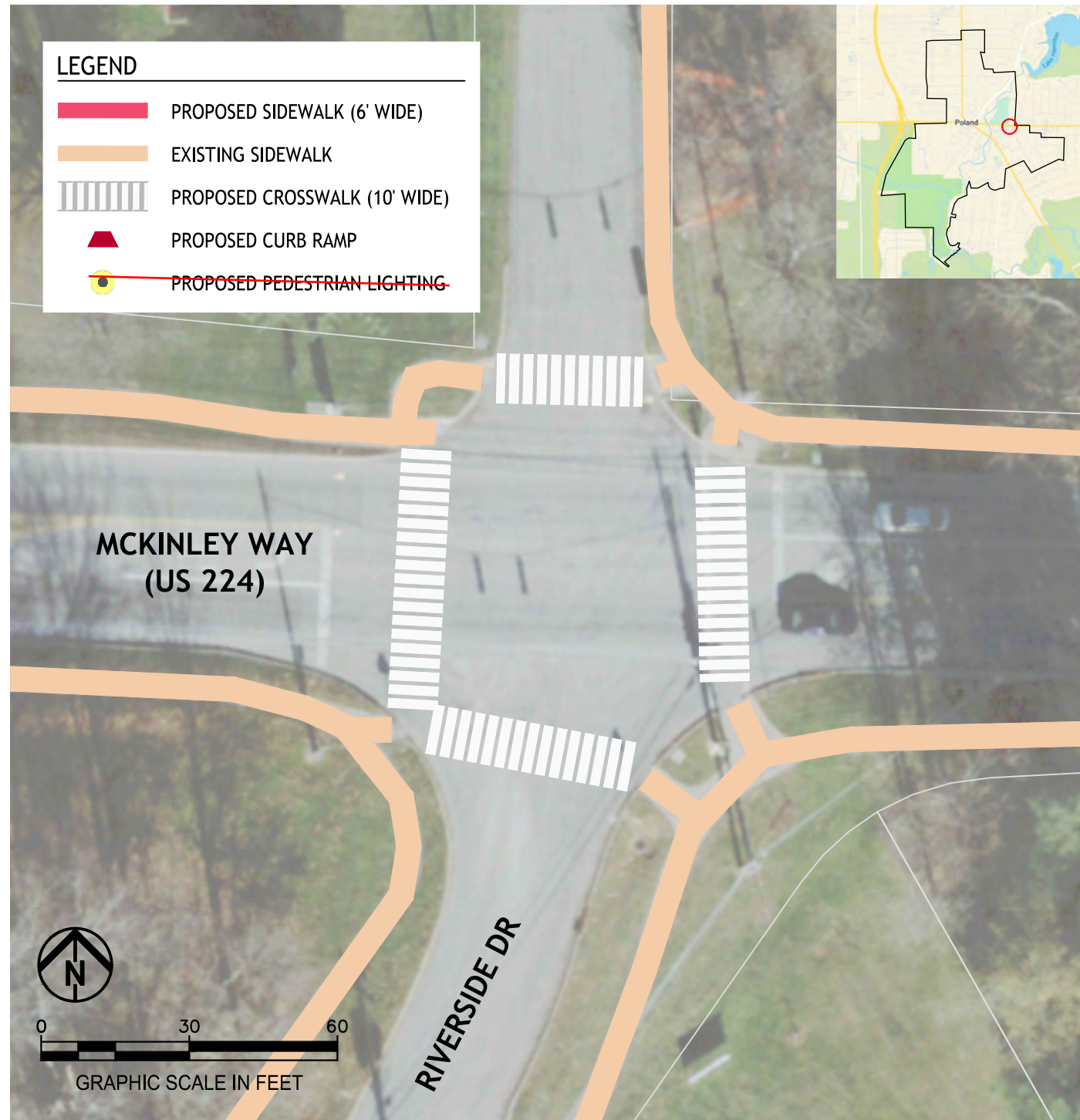
**HIGH-VISIBILITY CROSSWALKS  
N MAIN ST (SR 170) & JOHNSTON PL**



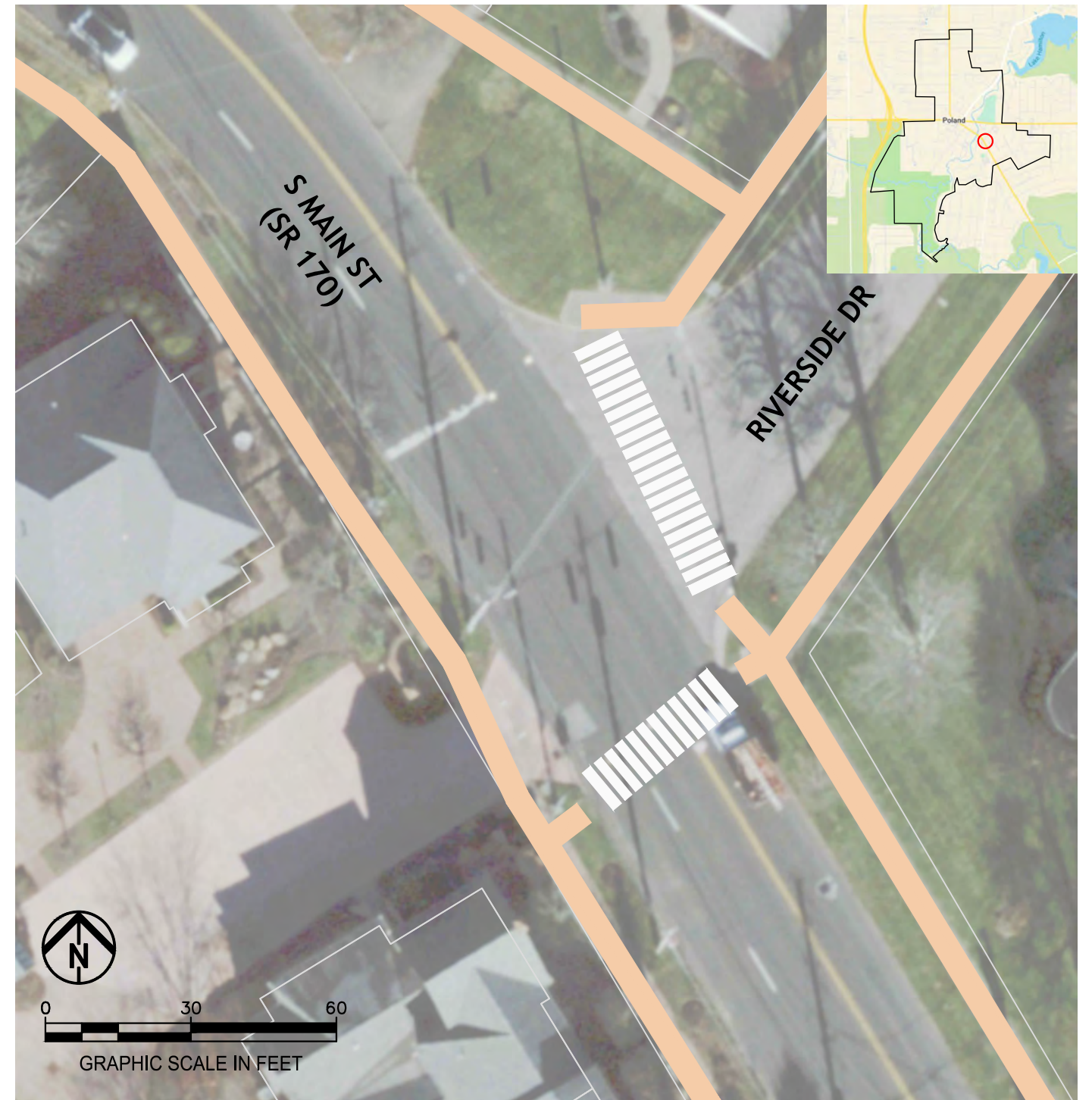
**HIGH-VISIBILITY CROSSWALKS  
S MAIN ST (SR 170) & COLLEGE ST**



E:\POLAND VILLAGE OF 24-00500-010 SCHOOL TRAVEL PLAN\CAD\ZPLAN VILLAGE.DWG - 3/6/2025 9:58:37 AM



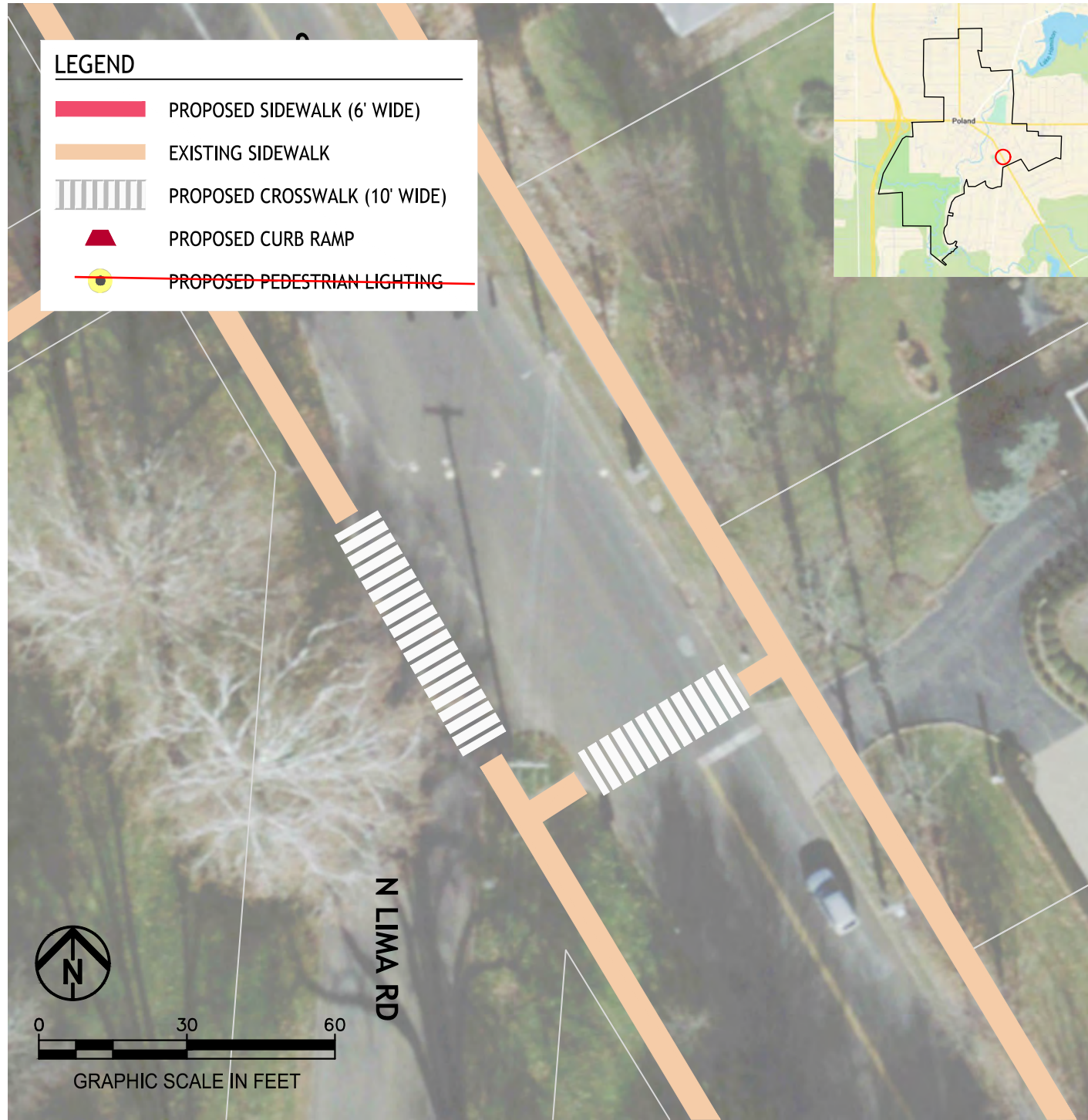
**HIGH-VISIBILITY CROSSWALKS  
MCKINLEY WAY (US 224) & RIVERSIDE DR**



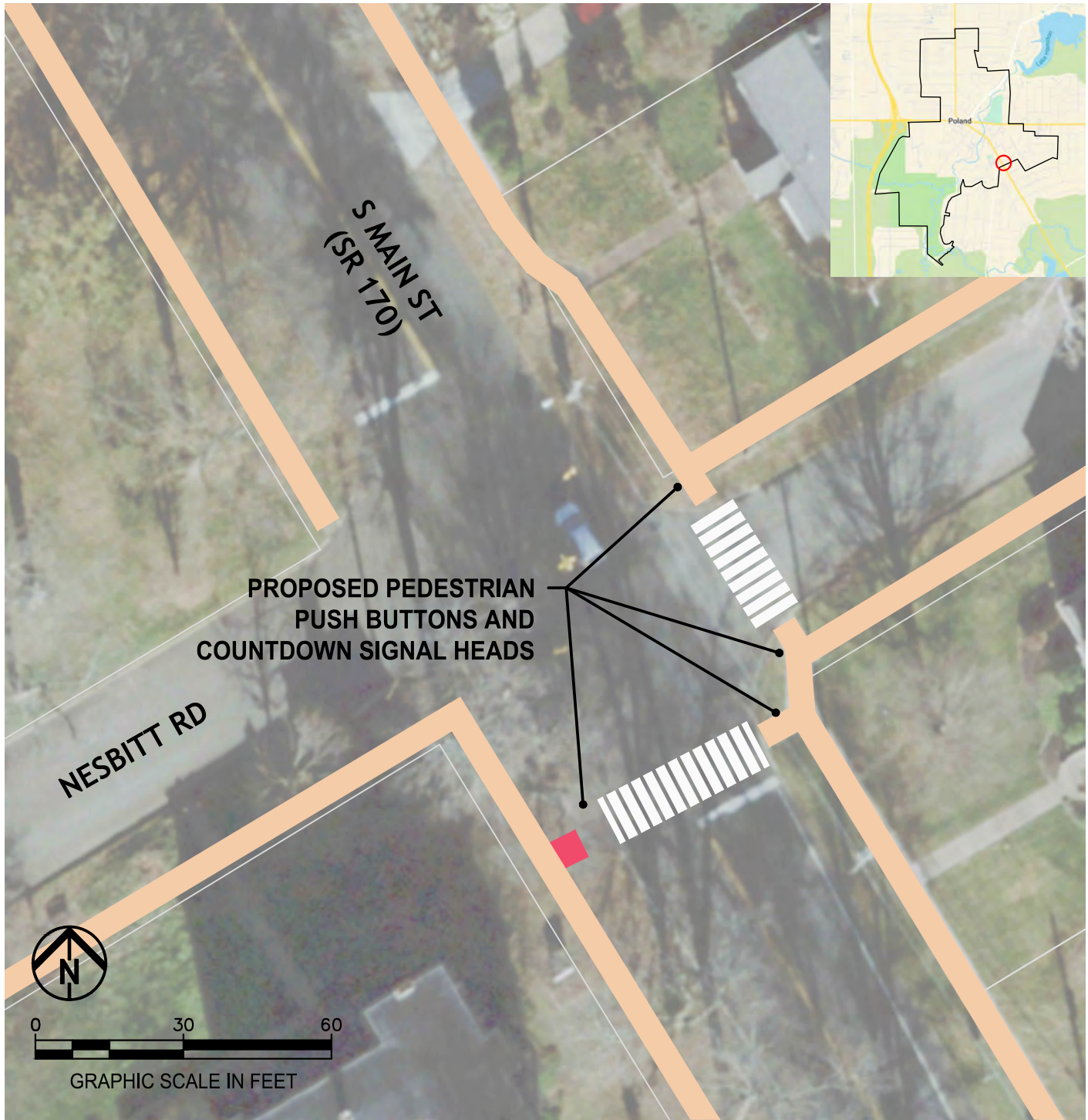
**HIGH-VISIBILITY CROSSWALKS  
S MAIN ST (SR 170) & RIVERSIDE DR**



E:\POLAND VILLAGE OF 24-00500-010 SCHOOL TRAVEL PLAN\CADD\PLAN VILLAGE.DWG - 3/6/2025 9:58:41 AM



**HIGH-VISIBILITY CROSSWALKS  
S MAIN ST (SR 170) & N LIMA RD**



**HIGH-VISIBILITY CROSSWALKS  
S MAIN ST (SR 170) & NESBITT RD**