

Exhibit 13: Recommended Barriers Summary Table

Barrier & Alternative	Barrier Location	Barrier Length (ft)	Average Barrier Height (ft)	Barrier Area (ft ²)	Barrier Cost (\$)	Max Noise Reduction (dBA)	Impacted Dwelling Units (#)	Benefitted Dwelling Units (#)	Cost per Benefitted DU (\$/#)	Type II Eval Benefitted Dwelling Units (#)	Type II Eval Cost per Benefitted DU (\$/#)	Barrier Feasible	Barrier Reasonable	Barrier Recommended
Barrier 3														
Alternative 3	ROW/EOS	2,125	16	34,400	\$860,000	12.1	31	37	\$23,243	36	\$23,889	Yes	Yes	Yes
Barrier 4														
Alternative 4	EOS	2,200	15	33,600	\$840,000	12.2	21	37	\$22,703	35	\$24,000	Yes	Yes	Yes
Barrier 5														
Alternative 1	EOS/ROW	2,100	18	37,750	\$943,750	15.7	46	47	\$20,080	43	\$21,948	Yes	Yes	Yes

SUM - 277 - 0.16 NOISE ANALYSIS

Exhibit 11.3.3a | Barrier 3 - Recommended Alternative 3 (Map 1 of 1)

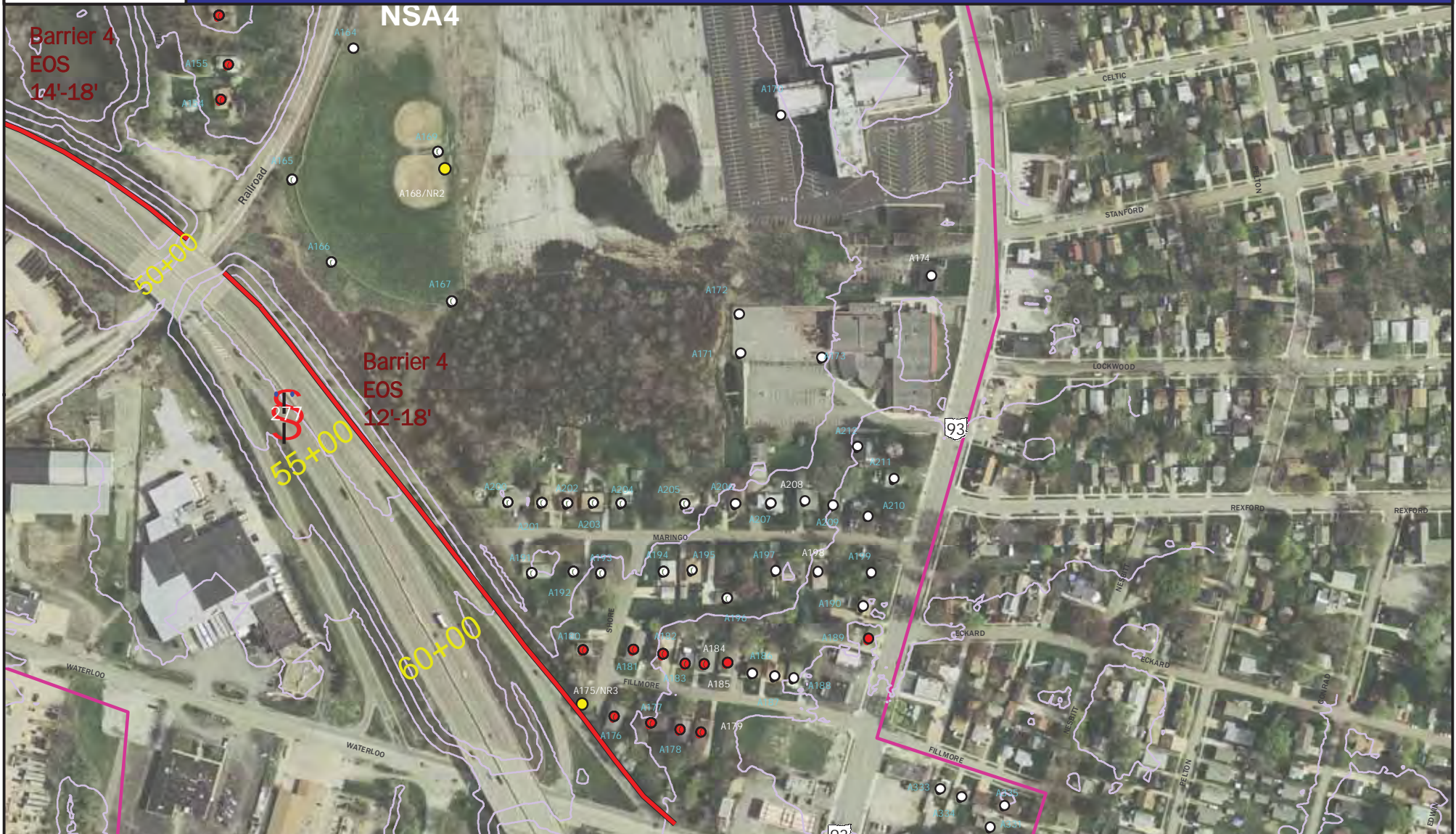


Barrier 3, Alt 3
EOS/ROW
Height=14'-18'

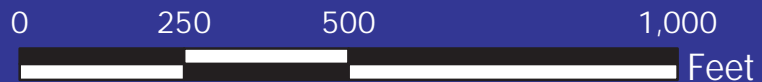
NSA3

- Receiver
- Impacted Receiver
- Benefitted Receiver
- Barrier
- Noise Readings
- Type II Eligible
- Contour 10 foot





- Receiver
- Impacted Receiver
- Benefitted Receiver
- Barrier
- Noise Readings
- Type II Eligible
- Contour 10 foot





- Receiver
- Impacted Receiver
- Benefitted Receiver
- Barrier
- Noise Readings
- Type II Eligible
- Contour 10 foot



SUM - 277 - 0.16 NOISE ANALYSIS

Exhibit 11.5.1a | Barrier 5 - Recommended Alternative 1 (Map 1 of 1)



- Receiver
- Impacted Receiver
- Benefitted Receiver
- Barrier
- Noise Readings
- Type II Eligible
- Contour 10 foot
- Utility Line

