

STA-21 WALLS 1 & 2 → ALL 81" BARRIER - APPROX 5,321 FT

### Evaluated Noise Barrier Wall Locations

Two Noise Barrier Wall locations were evaluated on the east side of SR 21: (1) A noise barrier along NSA 1; (2) A noise barrier along NSA 2.

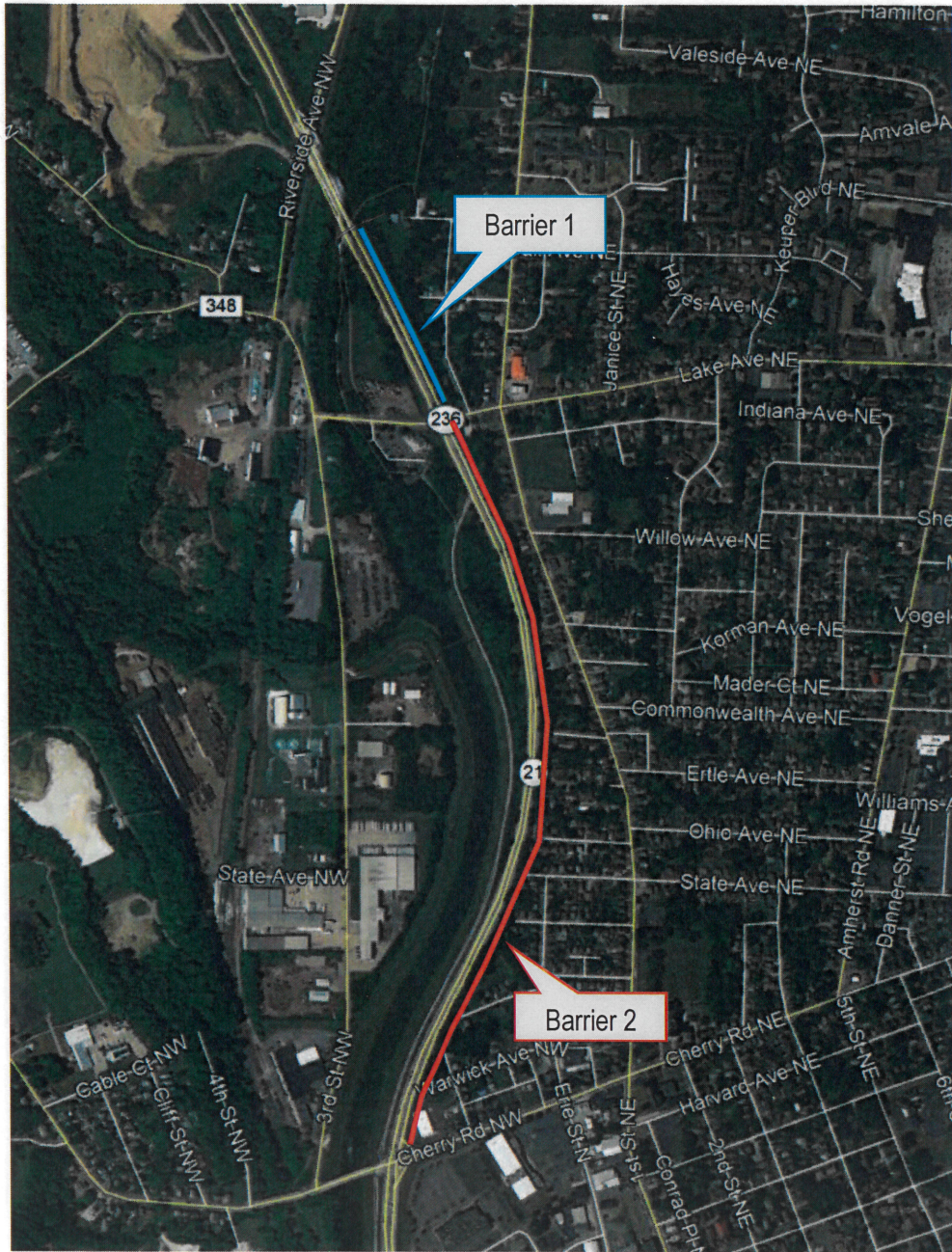


Figure 3  
Noise Barrier Wall Locations  
STA- SR 21-11.38 (PID 115521)

Sum-277 lanes 3, 4, 5 → COMBINATION OF 81" & TRADITIONAL NOISE WALL

BLUE= 81" SSB ALONG EOS → 4,684 FT

RED= 16' TALL STANDARD NOISE WALL ALONG ROW → 2,253 FT

WALLS 3&5

193 FT  
TRADITIONAL  
NOISE WALL

756 FT  
81" BARRIER

415 FT  
81" BARRIER

396 FT  
81" BARRIER

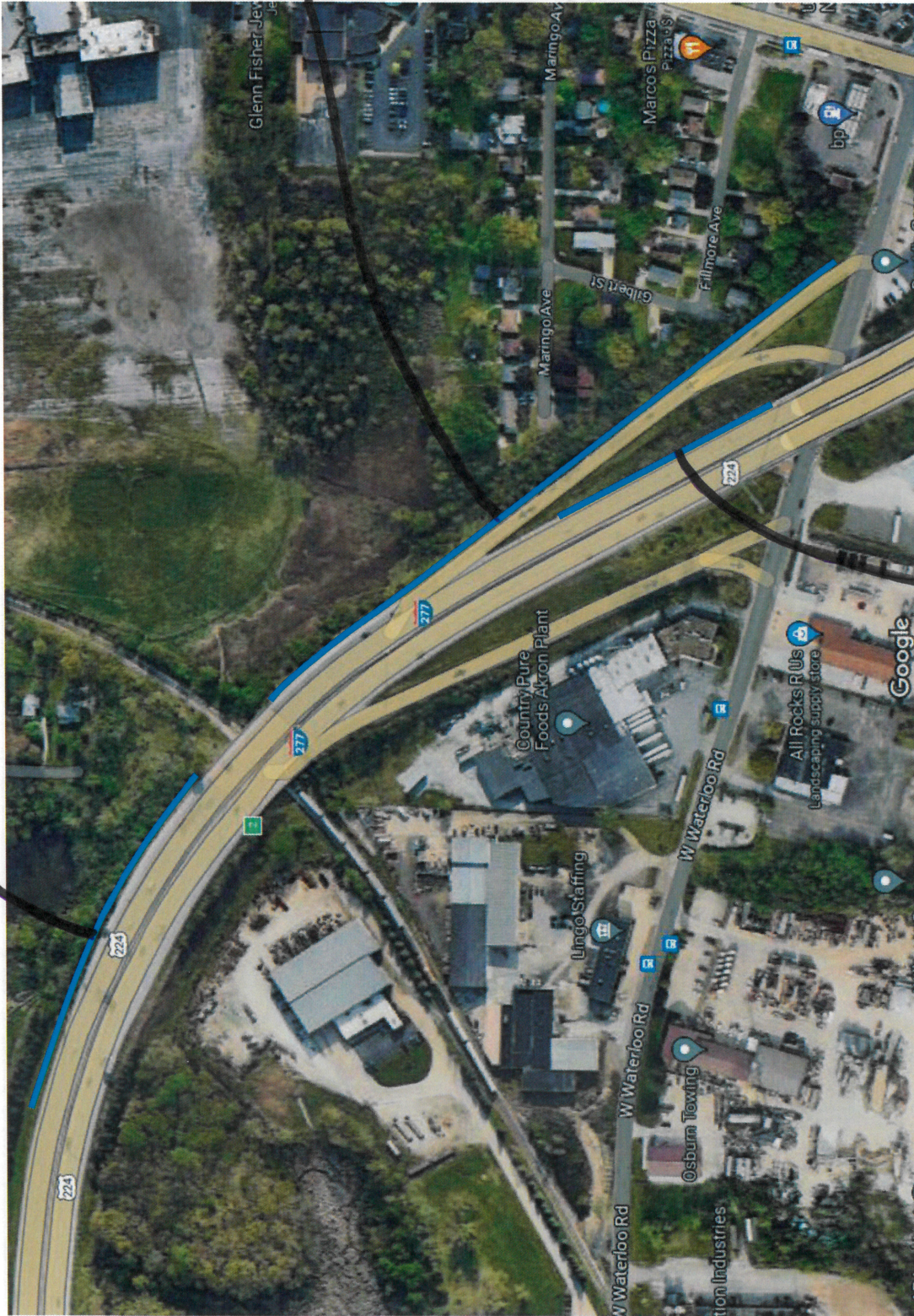
1,460 FT  
TRADITIONAL  
NOISE WALL



631 FT  
81" BARRIER

WALL 4

600 FT  
81" BARRIER



1,426 FT  
81" BARRIER

460 FT  
81" BARRIER