



Conduit File Number

1844153

CONDUIT INVENTORY AND CONDITION REPORT

GA 6

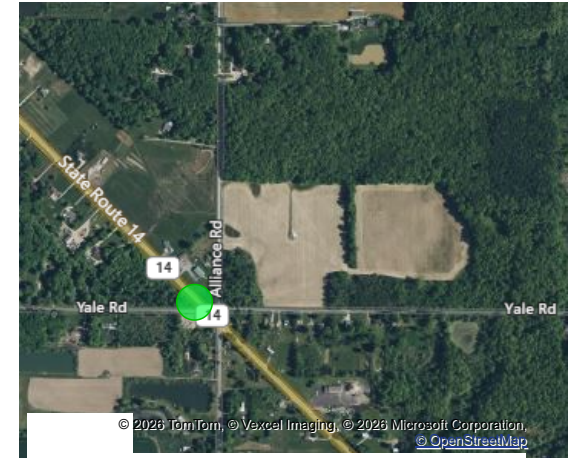
3/25/2026

Location and Route Information

1. District	4	2. County	POR	3. Route	14
4. Straight Line Mileage	21.67	5. Latitude	41.062649	6. Longitude	-81.099368
7. Status	A	8. Installation Date		9. Special Designations	Mainline
10. Conduit Owner	S	11. Maintenance Responsibility	S	12. Entry Class	A
13. Feature Intersection					

Conduit

14. Number of Cells	1	15. Broken Back	N		
16. Conduit Shape	Slab Top Conduit	17. Conduit Material	Plain or Reinforced Concrete		
18. Span (Inches)	36	19. Rise (Inches)	48	20. Length (Feet)	68
21. Metal Gage Thickness 1		22. Type of Pipe Protection	Unprotected		
23. Skew (Degrees)	0	24. Centerline Span	36		
25. Inlet End Treatment	None	26. Outlet End Treatment	None		
27. Maximum Height of Cover (Feet)	1	28. Scour Critical	N		
29. Height of Inlet Headwall (Feet)		30. Inlet Headwall to EOP Distance (Feet)			
31. Height of Outlet Headwall (Feet)		32. Outlet Headwall to EOP Distance (Feet)			
33. Atmospheric or Physical Hazard	N	34. Abrasion Level	1		
35. pH		36. Modification Type			
37. Year Modified		Latest General Appraisal	6		



Map Channel [Inventory Attachments](#) [Inspection Attachments](#)

Inventory By
COLLECTOR@D31_AG

Inventory Date
8/2/2016

Inventory Comments: