



# GENERAL SUMMARY

FHWA REGION	STATE	PROJECT	
5	OHIO		

2  
10

FRANKLIN COUNTY  
FRA. 670-3.93  
BUILDING REMOVAL

ITEM	SHEET NUMBER										ITEM	GRAND TOTAL	UNIT	PARCEL	DESCRIPTION	REF. NO.	
	4	5	6	7	8	9	10										
												202	LUMP	LUMP	14 WL	REMOVE: 2 STY. BRICK RESIDENCE WITH FULL BSMT, CONC. BLK. GRILL, METAL SHED.	1
												202	LUMP	LUMP	15 WL	REMOVE: 2 STY. ALUMINUM SIDED FR. RESIDENCE WITH FULL BSMT, 1-STY. REAR ADD., CARPORT	2
												202	LUMP	LUMP	17 WL	REMOVE: 2 STY. FR. DOUBLE WITH FULL BSMT.	3
												202	LUMP	LUMP	19 WL	REMOVE: 1 STY. FR. RESIDENCE WITH 1 STY. CONC. BLK. FRONT ADD'N., CARPORT, SLAB AND CRAWL SPACE	4
												202	LUMP	LUMP	21 WL	REMOVE: 2 STY. FR. RESIDENCE WITH FULL BSMT.	5
												202	LUMP	LUMP	21 WL	REMOVE: 2 STY. ASBESTOS SHINGLE OVER FR. DOUBLE, PARTIAL BASEMENT	6
												202	LUMP	LUMP	23 WL	REMOVE: 2 STY. INSULATED BRK. OVER FR. RESID. WITH PARTIAL BSMT., ATTACH. 1 1/2 STY. REAR ADD'N. & ATTCH. SHED	7
												202	LUMP	LUMP	25 WL	REMOVE: 2 STY. ALUMINUM SIDED FR. RESID. WITH FULL BSMT, ATTACH. 2 STY. REAR ADD'N., DETACHED 2-CAR CONC. BLK. GARAGE	8
												202	LUMP	LUMP	26 WL	REMOVE: 2 STY. ASBESTOS OVER FR. RESID. WITH FULL BSMT., ATTACH. 1 STY. REAR ADD'N.	9
												202	LUMP	LUMP	27 WL	REMOVE: 1 1/2 STY. FR. RESID. WITH FULL BSMT., ATTACH. 1 STY. REAR ADD'N.	10
												202	LUMP	LUMP	28 WL	REMOVE: 2 STY. ALUMINUM SIDED FR. RESID. WITH PART. BSMT., 1 STY. SIDE & REAR ADD'N.	11
												202	LUMP	LUMP	29 WL	REMOVE: 2 STY. ALUMINUM SIDED FR. RESID. WITH FULL BSMT, ATTACH. 1 STY. REAR ADD'N.	12
												202	LUMP	LUMP	30 WL	REMOVE: 1 STY. ALUMINUM SIDED FR. "RAISED RANCH" WITH FULL BSMT., BRK. FRONT.	13
												202	LUMP	LUMP	31 WL	REMOVE: 1 STY. ALUMINUM SIDED FR. RESID. WITH FULL BSMT.	14
												202	LUMP	LUMP	33 WL	REMOVE: 2 STY. FR. DOUBLE WITH CRAWL SPACE, ATTACH. 1 STY. REAR ADD'N. WITH FULL BSMT.	15
												202	LUMP	LUMP	34 WL	REMOVE: 2 STY. ALUMINUM SIDED FR. DOUBLE, ATTACH. 1 STY. REAR ADD'N. WITH FULL BSMT.	16
												202	LUMP	LUMP	35 WL	REMOVE: 2 STY. INSULATED BRK. FR. RESID. WITH BSMT., DETACHED 1 CAR CONC. BLK. GARAGE	17
												202	LUMP	LUMP	36 WL	REMOVE: 2 STY. ALUMINUM SIDED FR. RESID. WITH 1 STY. REAR ADD'N.	18
												202	LUMP	LUMP	38 WL	REMOVE: 1 STY. FR. RESID. WITH PARTIAL BSMT.	19
												202	LUMP	LUMP	39 WL	REMOVE: 2 STY. INSULATED BRK. FR. DUPLEX, 1 1/2 STY. REAR ADD'N. WITH FULL BSMT.	20
												202	LUMP	LUMP	40 WL	REMOVE: 1 STY. ALUMINUM SIDED FR. RESID. WITH FULL BSMT.	21
												202	LUMP	LUMP	42 WL	REMOVE: 2 STY. FR. RESID. WITH 1 STY. REAR ADD'N.	22
												202	LUMP	LUMP	43 WL	REMOVE: 1 STY. ALUMINUM SIDED FR. RESID. WITH FULL BSMT.	23
												202	LUMP	LUMP	44 WL	REMOVE: 1 1/2 STY. BRK., STUCCO & FR. RESID. WITH 1 STY. SIDE ADD'N. AND PARTIAL BSMT.	24
												202	LUMP	LUMP	45 WL	REMOVE: 2 STY. INSULATED BRK. FR. RESID. WITH PARTIAL BSMT. SMALL SHED IN REAR YARD	25
												202	LUMP	LUMP	45-AWL	REMOVE: 2 STY. INSULATED BRK. FR. RESID. WITH 1 STY. REAR ADD'N.	26
												202	LUMP	LUMP	46 WL	REMOVE: 2 STY. FR. DUPLEX WITH PARTIAL BSMT. AND CRAWL SPACE.	27
												202	LUMP	LUMP	47 WL	REMOVE: 2 STY. INSULATED BRK. FR. RESID. WITH 1 STY. REAR ADD'N. AND CRAWL SPACE	28
												202	LUMP	LUMP	54 WL	REMOVE: 2 STY. INSULATED BRK. FR. DUPLEX WITH REAR ADD'N., PARTIAL BSMT. AND CRAWL SPACE	29
												202	LUMP	LUMP	56 WL	REMOVE: 2 STY. FR. RESID. WITH 1 STY. REAR ADD'N. PARTIAL BSMT. AND CRAWL SPACE.	30
												202	LUMP	LUMP	57 WL	REMOVE: 2 STY. FR. RESID. WITH FULL BSMT. AND 1 STY. REAR ADD'N.	31
												202	LUMP	LUMP	58 WL	REMOVE: 2 STY. FR. RESID. WITH PARTIAL BSMT.	32
												202	LUMP	LUMP	59 WL	REMOVE: 2 STY. ASBESTOS OVER FR. DUPLEX WITH FULL BSMT., WOOD ANIMAL PEN	33
												202	LUMP	LUMP	61 WL	REMOVE: 2 STY. INSULATED BRK. FR. RESID. WITH 1 STY. REAR ADD'N. CRAWL SPACE & METAL/WOOD SHED	34
												202	LUMP	LUMP	64 WL	REMOVE: 2 STY. FR. RESID. WITH FULL BSMT.	35
												202	LUMP	LUMP	65 WL	REMOVE: 1 STY. FR. RESID. WITH PARTIAL BSMT. AND METAL SHED	36
												202	LUMP	LUMP	67 WL	REMOVE: 2 STY. STUCCO & FR. RESID. WITH FULL BSMT. REAR FR. SHED.	37
												202	LUMP	LUMP	68 WL	REMOVE: 2 STY. INSULATED BRK. FR. RESID. WITH FULL BSMT. & 1 STY. REAR ADD'N.	38
												202	LUMP	LUMP	70 WL	REMOVE: 1 STY. BRK. & STUCCO OFFICE & STORAGE BLDG., CHAIN LINK SECURITY FENCE.	39
												202	LUMP	LUMP	70 WL	REMOVE: 1 & 1/2 STY. CONC. BLK. INDUST. BLDG. ATTCH. 1 STY. BRK. OFF. BLDG., RADIO TWR, PUMP ISLAND, & UNDERGR. TANK	39.01
												202	LUMP	LUMP	70 WL-1	REMOVE: MULTI-STY. FR., METAL, BRK. & CONC. BLK. INDUSTRIAL COMPLEX., 1 STY. BRICK OFFICE BLDG.	40
												202	LUMP	LUMP	71 WL	REMOVE: 1 STY. CONC. BLK. BLDG., CONC. MIX. PLANT (METAL), GAS HOUSE WITH METER, GASOLINE PUMP AND 2 UNDERGROUND TANKS.	41
												202	LUMP	LUMP	73 WL	REMOVE: 2 STY. ALUMINUM SIDED FR. RESID. WITH FULL BSMT, ANIMAL PEN IN REAR YARD	42
												202	LUMP	LUMP	74 WL	REMOVE: 2 STY. INSULATED BRK. FR. RESID. WITH FULL BSMT.	43
												202	LUMP	LUMP	76 WL	REMOVE: 2 STY. INSULATED BRK. FR. RESID. WITH FULL BSMT. REAR CONC. BLK. GARAGE	44
												202	LUMP	LUMP	77 WL	REMOVE: 1 1/2 STY. FR. RESID. WITH PARTIAL BSMT. & 1 STY. REAR ADD'N.	45
												202	LUMP	LUMP	81 WL	REMOVE: 1 STY. CONC. BLK. CLUB BLDG.	46
												202	LUMP	LUMP	83 WL	REMOVE: 2 STY. ALUMINUM SIDED FR. RESID. WITH FULL BSMT. & METAL SHED	47
												202	LUMP	LUMP	85 WL	REMOVE: 2 STY. BRK. DUPLEX WITH FULL BSMT. & 2 CAR BRK. GARAGE	48
												202	LUMP	LUMP	87 WL	REMOVE: 2 STY. INSULATED BRK. FR. DUPLEX WITH FULL BSMT.	49
												202	LUMP	LUMP	88 WL	REMOVE: 2 STY. FR. RESID. WITH FULL BSMT.	50
												202	LUMP	LUMP	90 WL	REMOVE: 2 STY. FR. WITH ALUMINUM SIDING DUPLEX WITH FULL BSMT.	51
												202	LUMP	LUMP	104 AWL	REMOVE: 1 STY. METAL SHED, 1 STY. CONC. BLK. COMM. BLDG., CONC. RAMP & CONC. SADDLE FOR TANK STORAGE	52
												202	LUMP	LUMP	162 WL	REMOVE: 1 1/2 STY. FR. & CONC. BLK. COMMERCIAL BLDG.	53
												202	LUMP	LUMP	172 WL	REMOVE: 2 STY., 4 FAMILY, BRK., STUCCO & FR. APT. BLDG. WITH FULL BSMT.	54
												202	LUMP	LUMP	172 WL	REMOVE: 2 STY., 4 FAMILY, BRK., STUCCO & FR. APT. BLDG. WITH FULL BSMT.	55
												202	LUMP	LUMP	172 WL	REMOVE: 2 STY., 4 FAMILY, BRK., STUCCO & FR. APT. BLDG. WITH FULL BSMT.	56
												202	LUMP	LUMP	172 WL	REMOVE: 2 STY., 4 FAMILY, BRK., STUCCO & FR. APT. BLDG. WITH FULL BSMT.	57
												202	LUMP	LUMP	204 WL	REMOVE: 1 STY. BRK. LIBRARY BLDG.	58
												202	LUMP	LUMP	209 WL	REMOVE: 1 STY. CONC. BLK. & FR. RESID. DETACHED 1 CAR CONC. BLK. GARAGE	59
												202	LUMP	LUMP	210 WL	REMOVE: 1 STY. FR. RESID. WITH PARTIAL BSMT. & 1 STY. REAR ADD'N. DETACHED 2 CAR FR. GARAGE	60
												202	LUMP	LUMP	211 WL	REMOVE: 1 STY. FR. RESID. WITH PARTIAL BSMT. DETACHED 1 CAR CONC. BLK. GARAGE	61
												202	LUMP	LUMP	213 WL	REMOVE: 2 STY. FR. & STONE COMM. BLDG. AND 6 QUONSET GREENHOUSES	62
												202	LUMP	LUMP	214 WL	REMOVE: 2 STY. CONC. BLK. & FR. OFFICE BLDG. WITH ATTACHED METAL POLE BARN. 3 FR. & METAL AND CONC. BLK. OPEN STORAGE SHED, PUMP ISLAND & UNDERGROUND TANK.	63
												202	LUMP	LUMP	255 WL	REMOVE: 1 STY. POURED CONC. COMM. BLDG. & CORRUGATED FENCE	64
												202	LUMP	LUMP	256 WL	REMOVE: 1 STY. CONC. BLK. COMM. GARAGE BLDG.	65
												202	LUMP	LUMP	260 WL	REMOVE: 1 STY. CONC. BLK. COMM. BLDG.	66
												202	LUMP	LUMP	262 WL	REMOVE: 2 STY. FR. DUPLEX WITH PARTIAL BSMT. & 1 STY. REAR ADD'N. METAL SHED	67
												202	LUMP	LUMP	264 WL	REMOVE: 1 STY. ALUMINUM SIDED FR. RESID. WITH CRAWL SPACE	68

# GENERAL SUMMARY

FHWA REGION	STATE	PROJECT	3 10
5	OHIO		

FRANKLIN COUNTY  
FRA. 670-3.93  
BUILDING REMOVAL

ITEM	SHEET NUMBER										ITEM	GRAND TOTAL	UNIT	PARCEL	DESCRIPTION	REF. NO.
	4	5	6	7	8	9	10									
											202	LUMP	LUMP	265 WL	REMOVE: 1 STY. ALUMINUM SIDED FR. RESID. WITH FULL BSMT.	69
											202	LUMP	LUMP	266 WL	REMOVE: 2 STY. FR. RESID. WITH FULL BSMT. & ATTACHED 1 STY. REAR ADD'N., ANIMAL PEN IN REAR YARD	70
											202	LUMP	LUMP	267 WL	REMOVE: 1 STY. FR. RESID. WITH FULL BSMT.	71
											202	LUMP	LUMP	268 WL	REMOVE: 1 STY. ALUMINUM SIDED FR. RESID. WITH PARTIAL BSMT. & CRAWL SPACE. DETACHED CONC. BLK. GARAGE, ANIMAL PEN.	72
											202	LUMP	LUMP	269 WL	REMOVE: 1 STY. CONC. BLK. & BRK. CHURCH WITH FULL BSMT.	73
											202	LUMP	LUMP	270 WL	REMOVE: 2 STY. ALUMINUM SIDED FR. RESID. WITH PARTIAL BSMT. & 1 STY. REAR ADD'N.	74
											LUMP	LUMP	837 WL	REMOVE: 1 1/2 STY. FR. RESID. WITH CRAWL SPACE. FR. BARN, FR. CHICKEN HOUSE, CONC. OUTHOUSE, CONC. BLK. UTILITY BLDG, SEPTIC SYSTEM & WELL.	75	
											LUMP	LUMP	838 WL	REMOVE: 2 STY. ALUMINUM SIDED FR. RESID. WITH FULL BSMT. & 1 STY. REAR ADD'N., DETACHED CONC. BLK. GARAGE & WORKSHOP, 1 STY. CONC. BLK. MACHINE SHED, 1 STY. FR. CHICKEN HOUSE & MACHINE SHED, 2 STY. FR. BARN WITH ATTACHED 1 STY. SHED.	76	
											LUMP	LUMP	839 WL	REMOVE: 1 STY. BRK & BLK. WAREHOUSE & OFFICE BLDG.	77	
											LUMP	LUMP	841 WL	REMOVE: 1 STY. BRK., METAL & CONC. BLK. COMM. BLDG., FLAGPOLE, 2 LOADING DOCKS.	78	
											LUMP	LUMP	945 WL	REMOVE: 1 1/2 STY. ALUMINUM SIDED FR. RESID. WITH BSMT., 1 STY. REAR ADD'N., OUTHOUSE, DETACH. 2 CAR GARAGE	79	
											LUMP	LUMP	946 WL	REMOVE: 2 STY. CONC. BLK. COMM. BLDG. WITH 1 STY. FRONT BRK. ADD'N., 3+ CAR CONC. BLK. GARAGE AND CLUBHOUSE. DETACHED 1 STY. CONC. BLK. RESTROOM BLDG.	80	
											LUMP	LUMP	946 WL	REMOVE: 1 1/2 STY. FR. RESID. WITH BSMT. DETACHED 1 CAR FR. GARAGE	81	

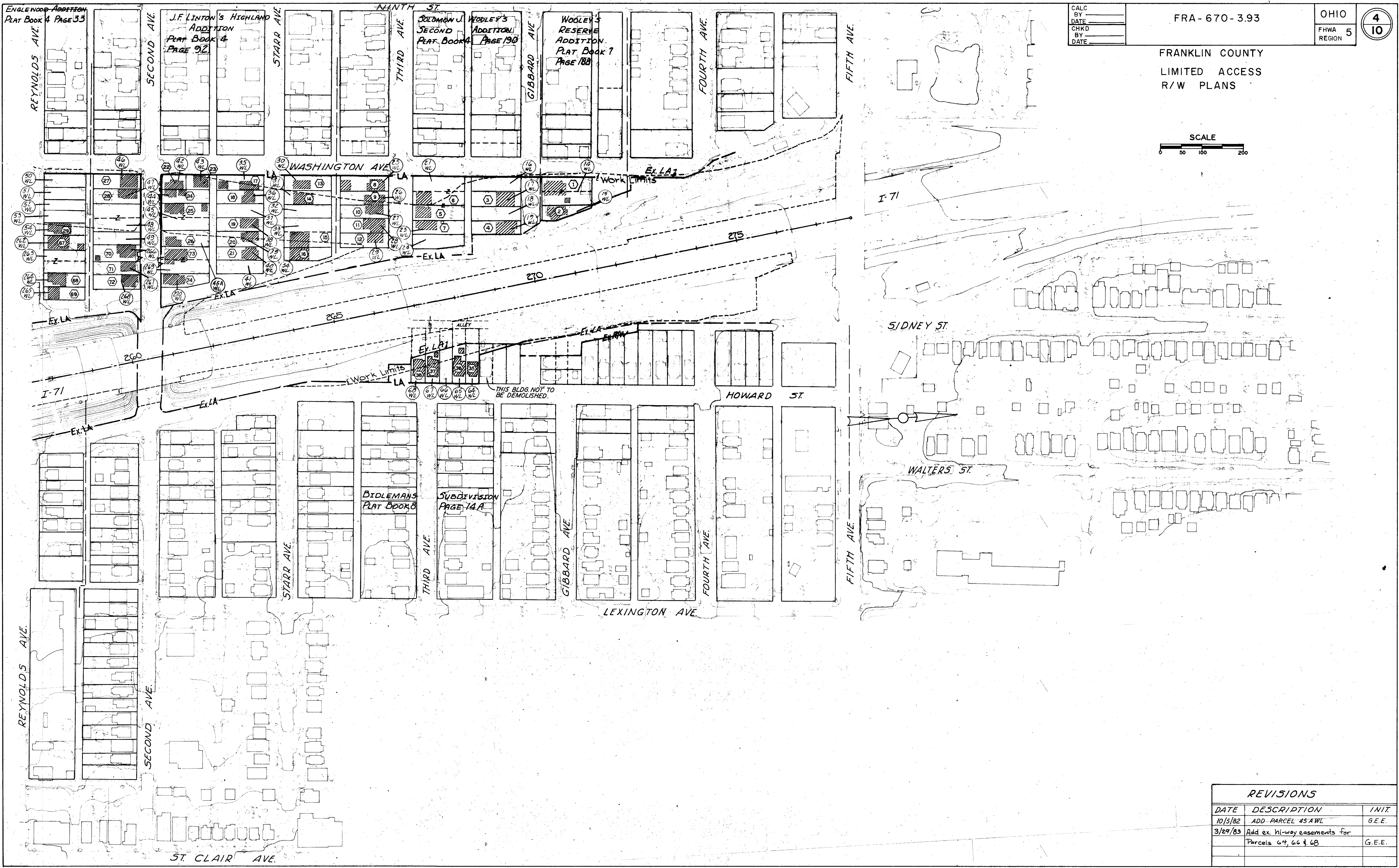
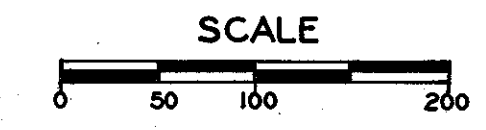
ENGLEWOOD ADDITION  
PLAT BOOK 4 PAGE 33

J.F. LINTON'S HIGHLAND  
ADDITION  
PLAT BOOK 4  
PAGE 92

SOLDMAN J.  
SECOND  
ADDITION  
PLAT BOOK 4  
PAGE 198

WOOLEY'S  
RESERVE  
ADDITION  
PLAT BOOK 7  
PAGE 188

CALC BY		FRA-670-393	OHIO	4 10
DATE				
CHKD BY				
DATE				
FRANKLIN COUNTY			FHWA	5
LIMITED ACCESS			REGION	
R/W PLANS				



REVISIONS		
DATE	DESCRIPTION	INIT.
10/5/82	ADD PARCEL 45 AWL	G.E.E.
3/29/83	Add ex. hi-way easements for Parcels 64, 66 & 68	G.E.E.

R/W PLAN

CALC BY \_\_\_\_\_  
 DATE \_\_\_\_\_  
 CHKD BY \_\_\_\_\_  
 DATE \_\_\_\_\_

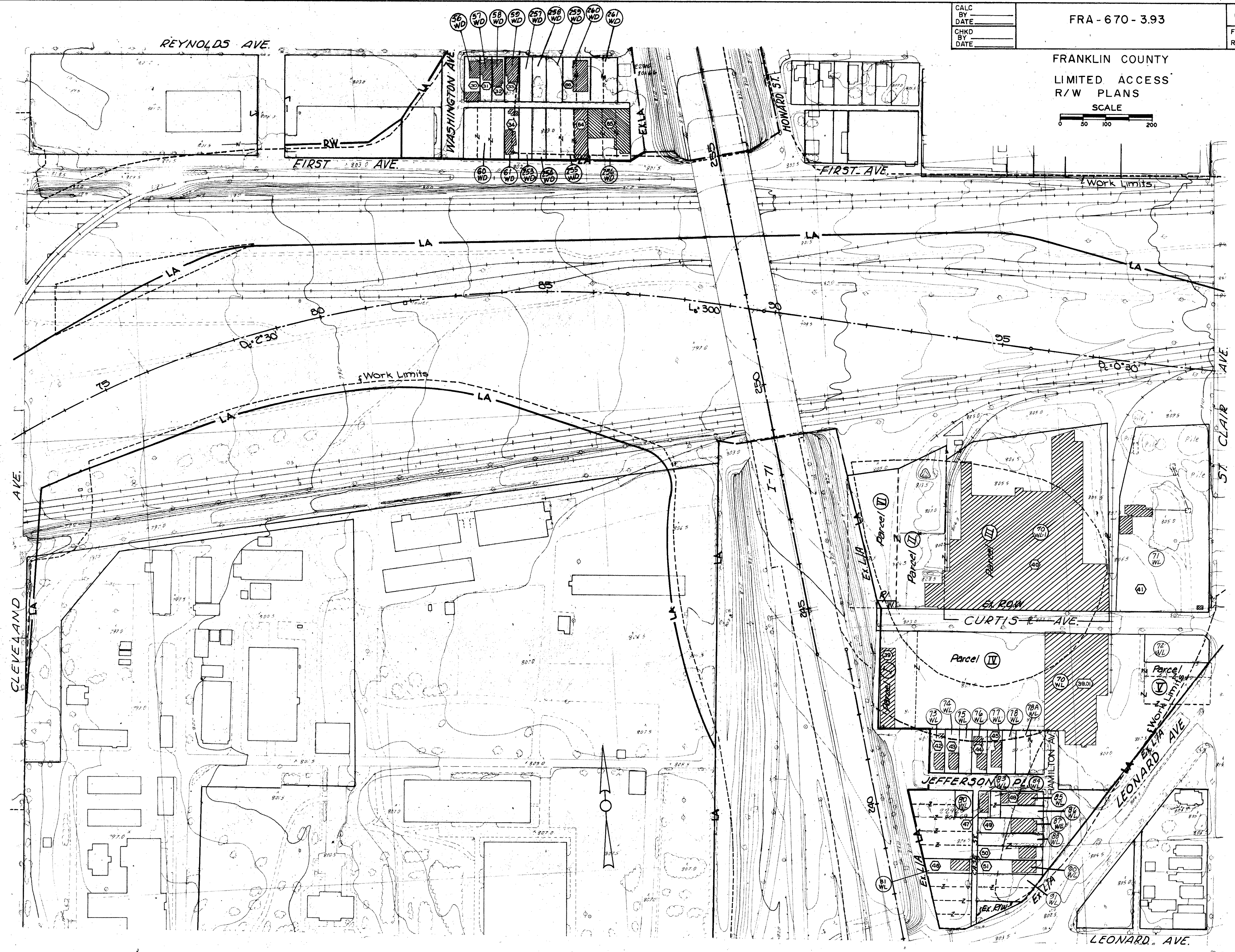
FRA-670-3.93

OHIO  
 FHWA REGION 5

5  
 10

FRANKLIN COUNTY  
 LIMITED ACCESS  
 R/W PLANS

SCALE  
 0 50 100 200



REVISIONS		
DATE	DESCRIPTION	INIT.
10/5/82	ADD PARCEL 70WL-1	G.E.E.

R/W PLAN

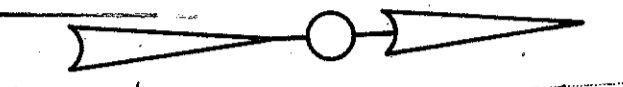
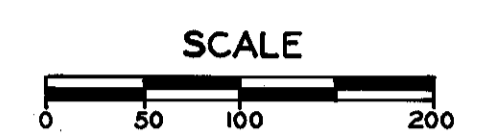
CALC BY \_\_\_\_\_  
 DATE \_\_\_\_\_  
 CHKD BY \_\_\_\_\_  
 DATE \_\_\_\_\_

FRA 070-3.93

OHIO  
 FHWA REGION 5

6  
 10

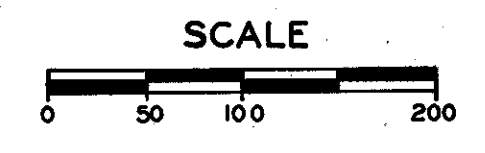
FRANKLIN COUNTY  
 LIMITED ACCESS  
 R/W PLANS



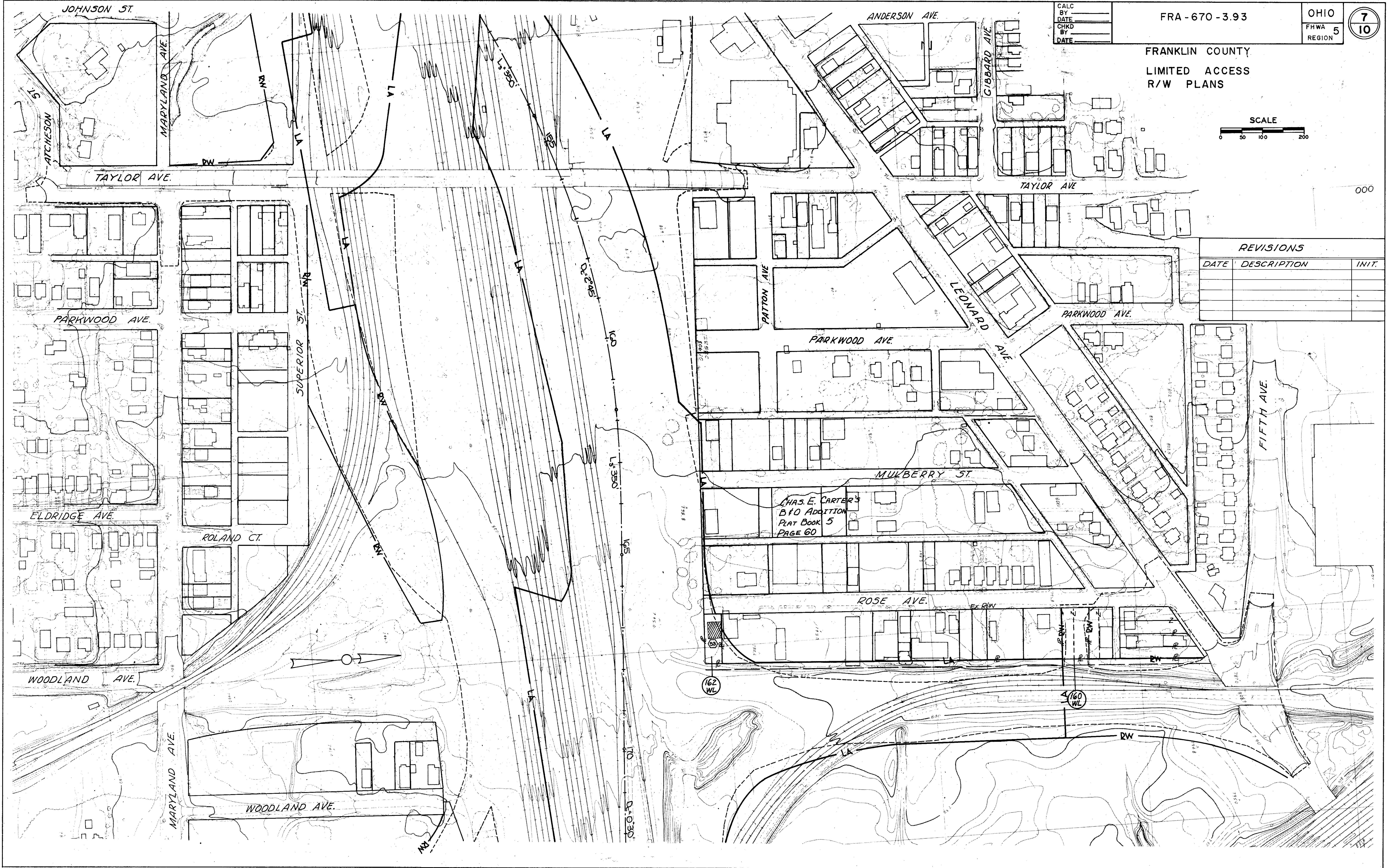
REVISIONS		
DATE	DESCRIPTION	INIT.
6-16-83	10A-WL became 10A-QC.	

R/W PLAN

FRANKLIN COUNTY  
LIMITED ACCESS  
R/W PLANS

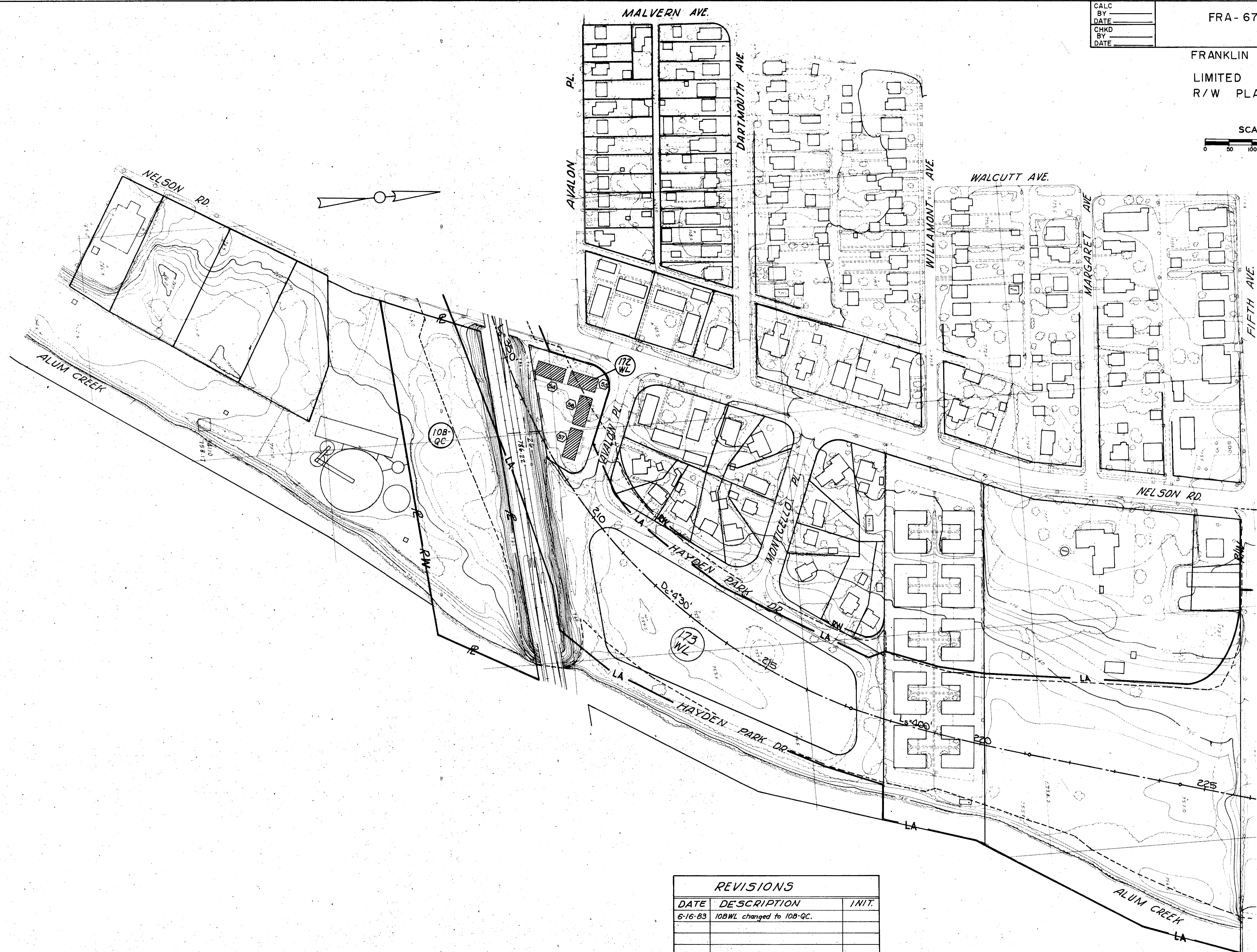
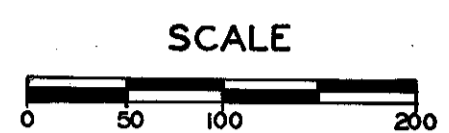


REVISIONS		
DATE	DESCRIPTION	INIT.



R/W PLAN

FRANKLIN COUNTY  
LIMITED ACCESS  
R/W PLANS



REVISIONS		
DATE	DESCRIPTION	INIT.
6-16-83	10BWL changed to 10B-QC.	



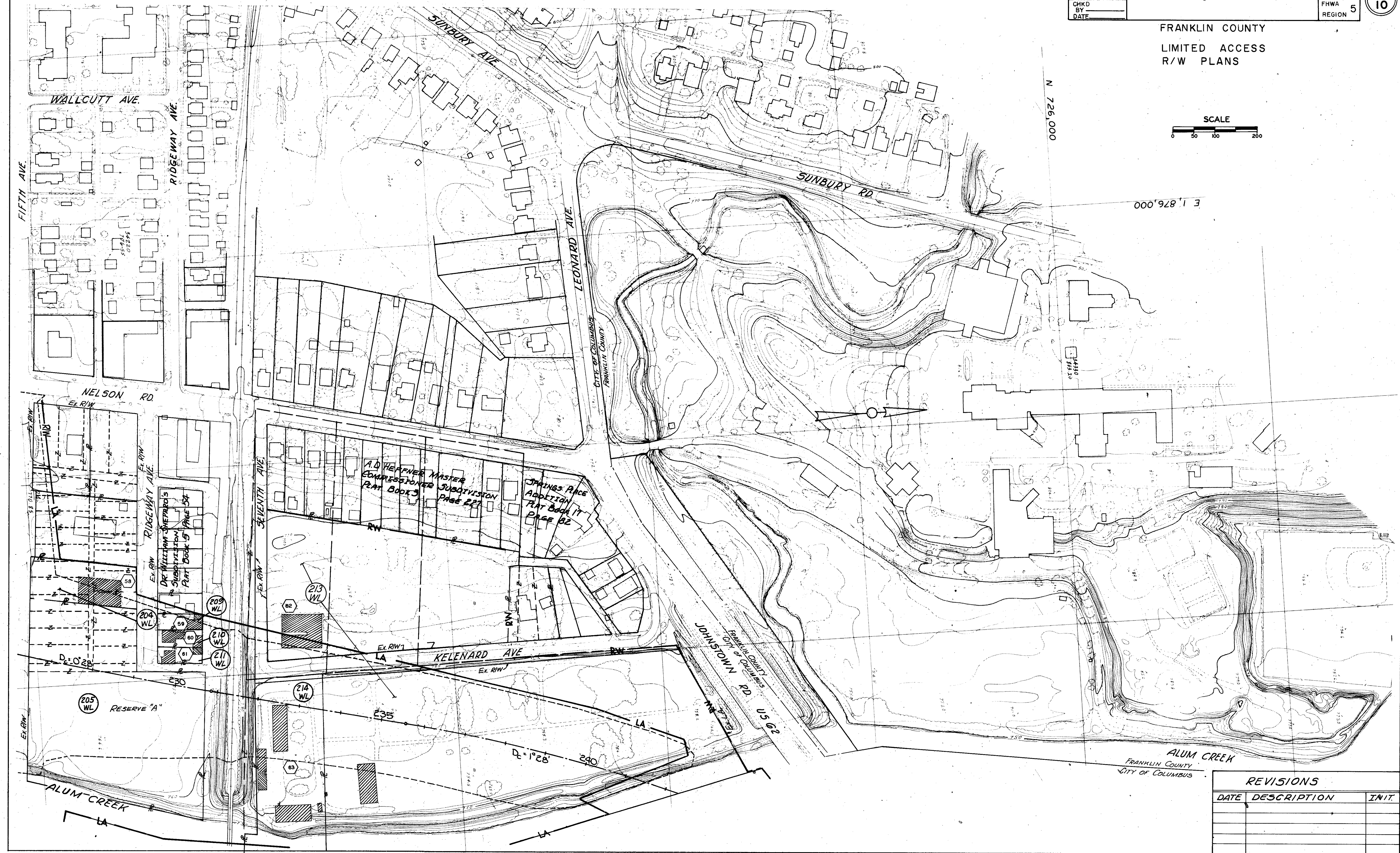
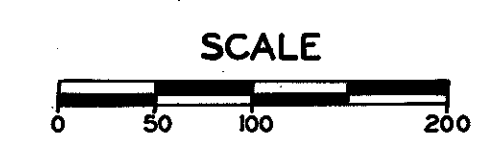
CALC BY \_\_\_\_\_  
 DATE \_\_\_\_\_  
 CHKD BY \_\_\_\_\_  
 DATE \_\_\_\_\_

FRA-670-3.93

OHIO  
 FHWA REGION 5

9  
 10

FRANKLIN COUNTY  
 LIMITED ACCESS  
 R/W PLANS



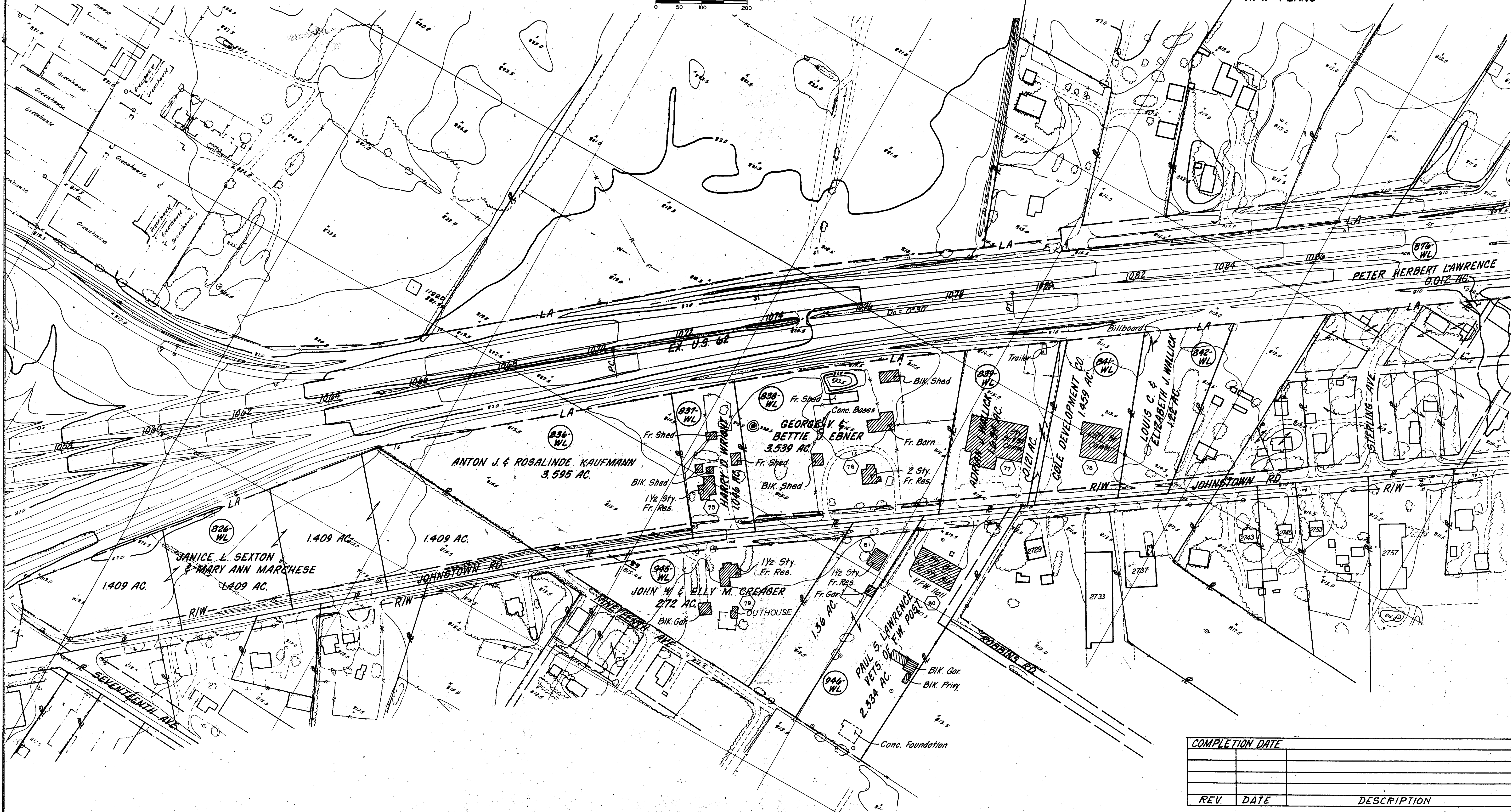
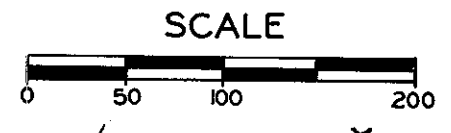
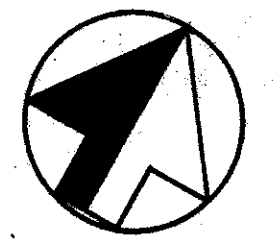
REVISIONS		
DATE	DESCRIPTION	INIT.

R/W PLAN

MIFFLIN TOWNSHIP  
QTR. T. 3, T. 1N., R. 17W  
U.S.M.L.

FRANKLIN COUNTY

LIMITED ACCESS  
R/W PLANS



COMPLETION DATE		
REV.	DATE	DESCRIPTION

TOTAL TAKE RIGHT-OF-WAY