



THIS IMPROVEMENT HAS BEEN DECLARED A LIMITED ACCESS HIGHWAY FROM STA. 88+00 TO STA. 117+41.64 BY ACTION OF THE DIRECTOR OF TRANSPORTATION AND RECORDED IN VOLUME NUMBER \_\_\_\_\_ PAGE \_\_\_\_\_ OF THE DIRECTOR'S JOURNAL PURSUANT TO LAW.

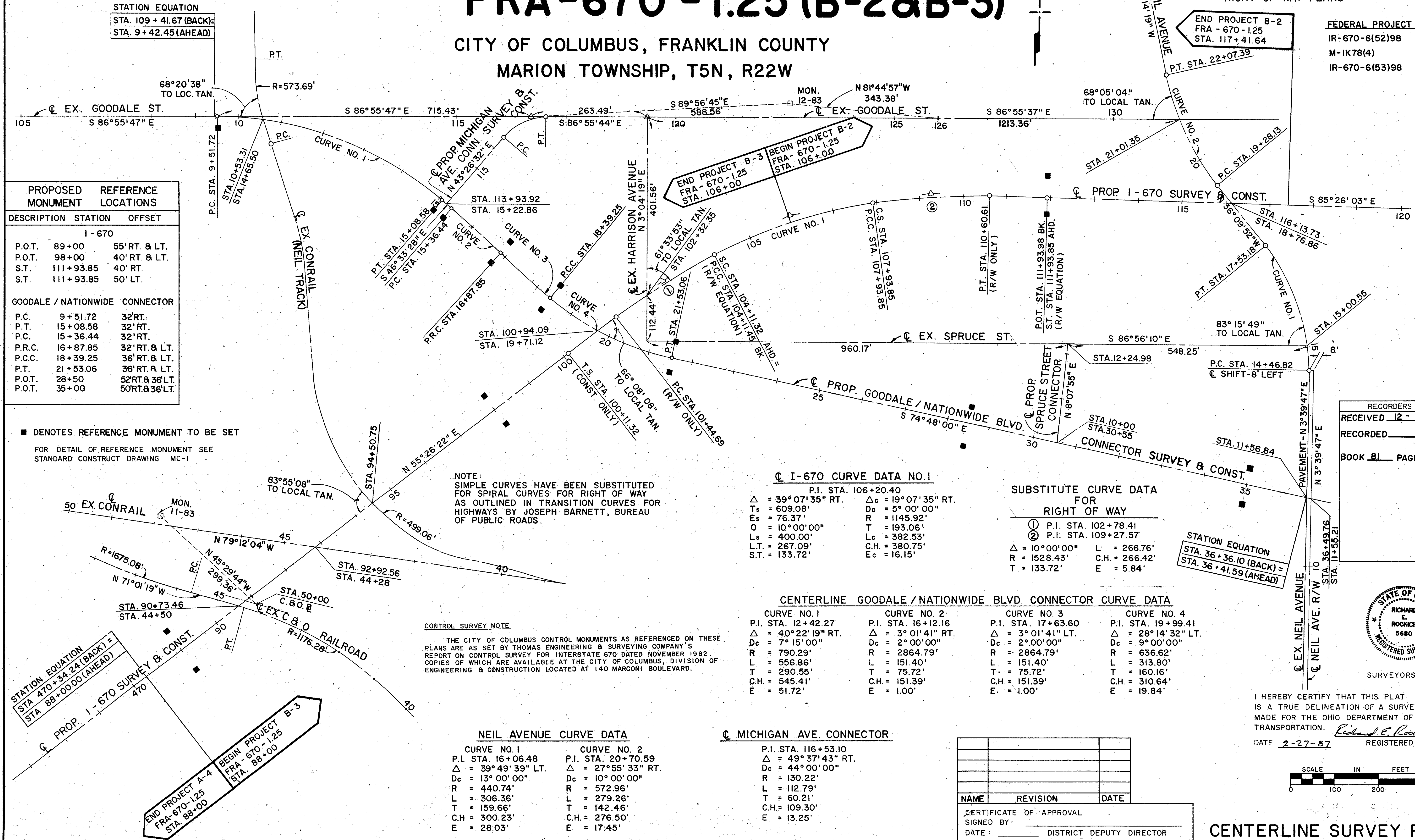
# CENTERLINE SURVEY PLAT

## FRA-670-1.25 (B-2&B-3)

CITY OF COLUMBUS, FRANKLIN COUNTY  
MARION TOWNSHIP, T5N, R22W

CALC. BY	FRANKLIN COUNTY LIMITED ACCESS RIGHT OF WAY PLANS	OHIO F.H.W.A. REGION 5
DATE		
CHKD. BY		
DATE		

FEDERAL PROJECT NO'S.  
IR-670-6(52)98 B-2  
M-1K78(4) B-2  
IR-670-6(53)98 B-3



PROPOSED MONUMENT	REFERENCE LOCATIONS
DESCRIPTION	STATION OFFSET
I-670	
P.O.T.	89+00 55' RT. & LT.
P.O.T.	98+00 40' RT. & LT.
S.T.	111+93.85 40' RT.
S.T.	111+93.85 50' LT.
GOODALE / NATIONWIDE CONNECTOR	
P.C.	9+51.72 32' RT.
P.T.	15+08.58 32' RT.
P.C.	15+36.44 32' RT.
P.R.C.	16+87.85 32' RT. & LT.
P.C.C.	18+39.25 36' RT. & LT.
P.T.	21+53.06 36' RT. & LT.
P.O.T.	28+50 52' RT. & 36' LT.
P.O.T.	35+00 50' RT. & 36' LT.

■ DENOTES REFERENCE MONUMENT TO BE SET  
FOR DETAIL OF REFERENCE MONUMENT SEE STANDARD CONSTRUCT DRAWING MC-1

NOTE: SIMPLE CURVES HAVE BEEN SUBSTITUTED FOR SPIRAL CURVES FOR RIGHT OF WAY AS OUTLINED IN TRANSITION CURVES FOR HIGHWAYS BY JOSEPH BARNETT, BUREAU OF PUBLIC ROADS.

**EX. I-670 CURVE DATA NO. 1**

Δ = 39° 07' 35" RT.	Dc = 19° 07' 35" RT.
Ts = 609.08'	Dc = 5° 00' 00"
Es = 76.37'	R = 1145.92'
O = 10° 00' 00"	T = 193.06'
Ls = 400.00'	Lc = 382.53'
L.T. = 267.09'	C.H. = 380.75'
S.T. = 133.72'	Ec = 16.15'

**SUBSTITUTE CURVE DATA FOR RIGHT OF WAY**

① P.I. STA. 102+78.41	L = 266.76'
② P.I. STA. 109+27.57	C.H. = 266.42'
Δ = 10° 00' 00"	E = 5.84'
R = 1528.43'	
T = 133.72'	

**CENTERLINE GOODALE / NATIONWIDE BLVD. CONNECTOR CURVE DATA**

CURVE NO. 1	CURVE NO. 2	CURVE NO. 3	CURVE NO. 4
P.I. STA. 12+42.27	P.I. STA. 16+12.16	P.I. STA. 17+63.60	P.I. STA. 19+99.41
Δ = 40° 22' 19" RT.	Δ = 3° 01' 41" RT.	Δ = 3° 01' 41" LT.	Δ = 28° 14' 32" LT.
Dc = 7° 15' 00"	Dc = 2° 00' 00"	Dc = 2° 00' 00"	Dc = 9° 00' 00"
R = 790.29'	R = 2864.79'	R = 2864.79'	R = 636.62'
L = 556.86'	L = 151.40'	L = 151.40'	L = 313.80'
T = 290.55'	T = 75.72'	T = 75.72'	T = 160.16'
C.H. = 545.41'	C.H. = 151.39'	C.H. = 151.39'	C.H. = 310.64'
E = 51.72'	E = 1.00'	E = 1.00'	E = 19.84'

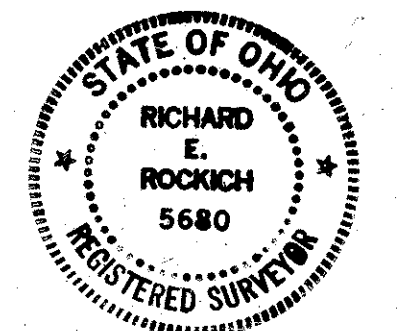
**NEIL AVENUE CURVE DATA**

CURVE NO. 1	CURVE NO. 2
P.I. STA. 16+06.48	P.I. STA. 20+70.59
Δ = 39° 49' 39" LT.	Δ = 27° 55' 33" RT.
Dc = 13° 00' 00"	Dc = 10° 00' 00"
R = 440.74'	R = 572.96'
L = 306.36'	L = 279.26'
T = 159.66'	T = 142.46'
C.H. = 300.23'	C.H. = 276.50'
E = 28.03'	E = 17.45'

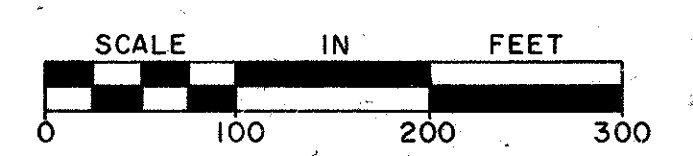
**EX. MICHIGAN AVE. CONNECTOR**

P.I. STA. 116+53.10
Δ = 49° 37' 43" RT.
Dc = 44° 00' 00"
R = 130.22'
L = 112.79'
T = 60.21'
C.H. = 109.30'
E = 13.25'

RECORDERS OFFICE  
RECEIVED 12-9-1994  
RECORDED \_\_\_\_\_, 19\_\_  
BOOK 81 PAGE 47



I HEREBY CERTIFY THAT THIS PLAT IS A TRUE DELINEATION OF A SURVEY MADE FOR THE OHIO DEPARTMENT OF TRANSPORTATION.  
DATE 2-27-87  
REGISTERED SURVEYOR



NAME	REVISION	DATE

CERTIFICATE OF APPROVAL  
SIGNED BY: \_\_\_\_\_  
DATE: \_\_\_\_\_ DISTRICT DEPUTY DIRECTOR

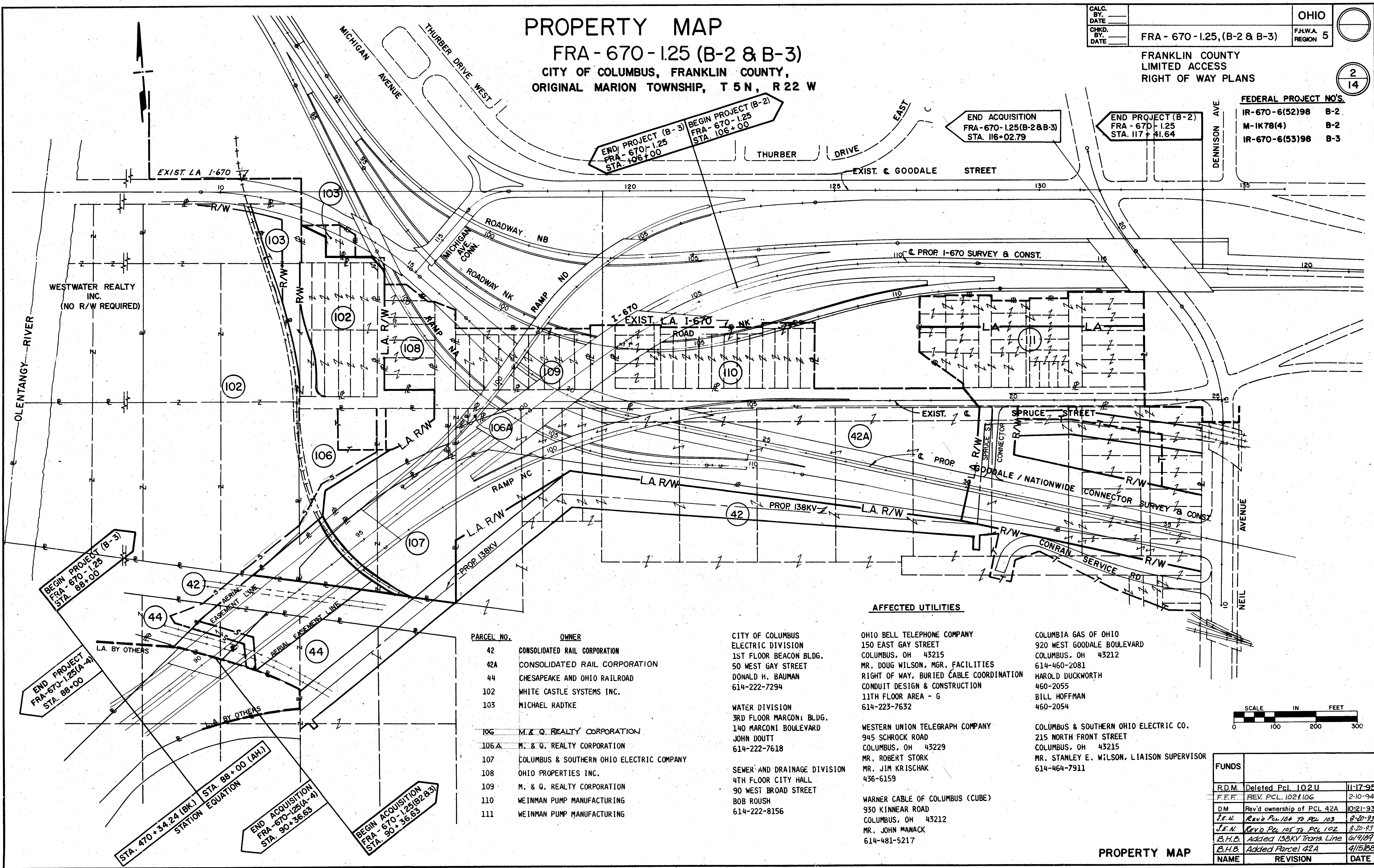
CENTERLINE SURVEY PLAT

# PROPERTY MAP

## FRA - 670 - 1.25 (B-2 & B-3)

### CITY OF COLUMBUS, FRANKLIN COUNTY, ORIGINAL MARION TOWNSHIP, T 5 N, R 22 W

CALC. BY: _____	OHIO	2
CHKD. BY: _____	FRANKLIN COUNTY	14
DATE: _____	LIMITED ACCESS	
	RIGHT OF WAY PLANS	
FEDERAL PROJECT NO'S.		
IR-670-6(52)98	B-2	
M-1K78(4)	B-2	
IR-670-6(53)98	B-3	



PARCEL NO.	OWNER
42	CONSOLIDATED RAIL CORPORATION
42A	CONSOLIDATED RAIL CORPORATION
44	CHESAPEAKE AND OHIO RAILROAD
102	WHITE CASTLE SYSTEMS INC.
103	MICHAEL RADTKE
106	M. & Q. REALTY CORPORATION
106A	M. & Q. REALTY CORPORATION
107	COLUMBUS & SOUTHERN OHIO ELECTRIC COMPANY
108	OHIO PROPERTIES INC.
109	M. & Q. REALTY CORPORATION
110	WEINMAN PUMP MANUFACTURING
111	WEINMAN PUMP MANUFACTURING

**CITY OF COLUMBUS**  
ELECTRIC DIVISION  
1ST FLOOR BEACON BLDG.  
50 WEST GAY STREET  
DONALD H. BAUMAN  
614-222-7294

WATER DIVISION  
3RD FLOOR MARCONI BLDG.  
140 MARCONI BOULEVARD  
JOHN DOUTT  
614-222-7618

SEWER AND DRAINAGE DIVISION  
4TH FLOOR CITY HALL  
90 WEST BROAD STREET  
BOB ROUSH  
614-222-8156

**OHIO BELL TELEPHONE COMPANY**  
150 EAST GAY STREET  
COLUMBUS, OH 43215  
MR. DOUG WILSON, MGR. FACILITIES  
RIGHT OF WAY, BURIED CABLE COORDINATION  
CONDUIT DESIGN & CONSTRUCTION  
11TH FLOOR AREA - G  
614-223-7632

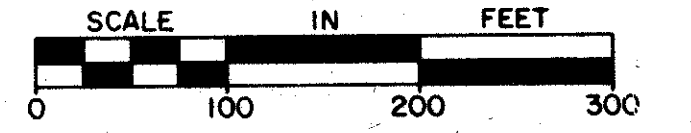
**WESTERN UNION TELEGRAPH COMPANY**  
945 SCHROCK ROAD  
COLUMBUS, OH 43229  
MR. ROBERT STORK  
MR. JIM KRISCHAK  
436-6159

**WARNER CABLE OF COLUMBUS (CUBE)**  
930 KINNEAR ROAD  
COLUMBUS, OH 43212  
MR. JOHN MANACK  
614-481-5217

**COLUMBIA GAS OF OHIO**  
920 WEST GOODALE BOULEVARD  
COLUMBUS, OH 43212  
614-460-2081  
MR. HAROLD DUCKWORTH  
460-2055  
BILL HOFFMAN  
460-2054

**COLUMBUS & SOUTHERN OHIO ELECTRIC CO.**  
215 NORTH FRONT STREET  
COLUMBUS, OH 43215  
MR. STANLEY E. WILSON, LIAISON SUPERVISOR  
614-464-7911

**AFFECTED UTILITIES**



FUNDS	NAME	REVISION	DATE
R.D.M.	Deleted Pcl. 102U		11-17-95
F.F.F.	REV. PCL. 102 & 106		2-10-94
D.M.	Rev'd ownership of PCL 42A		10-21-93
S.E.H.	Rev'd Pcl 104 to Pcl 103		8-20-93
J.E.N.	Rev'd Pcl 105 to Pcl 102		8-20-93
B.H.D.	Added 138KV Trans. Line		6/9/89
B.H.D.	Added Parcel 42A		4/15/88

**PROPERTY MAP**

TOTAL NUMBER OF OWNERSHIPS 13  
 TOTAL TAKES 5  
 OWNERSHIPS W/STRUC. 4  
 OWNERSHIPS W/"P" ITEMS 0

# SUMMARY OF ADDITIONAL RIGHT OF WAY

CALC. BY: _____	OHIO
DATE: _____	F.M.A. REGION 5
CHKD. BY: _____	
DATE: _____	

FRA - 670-1.25 (B-2 & B-3)

FRANKLIN COUNTY  
LIMITED ACCESS - R/W PLANS

3  
14

PARCEL N <sup>o</sup>	OWNER	AUDITOR'S PARCEL N <sup>o</sup>	OWNER RECORD		RECORD AREA *	TOTAL P.R.O.	TO BE ACQUIRED				NET RESIDUE		SHEET N <sup>o</sup>	TYPE FUNDS PROJECT	REMARKS	AS ACQUIRED	
			BOOK	PAGE			GROSS TAKE *	P.R.O. IN TAKE	NET TAKE		LEFT *	RIGHT *				BOOK	PAGE
									LAND *	BLDG.							
42-WL	CONSOLIDATED RAIL CORPORATION	180602					6318	0	6318	NO			6				
42-WL-1		66115					9,525	0	9,525				6				
42-WL-2		66303,66114					45,291	0	45,291				8 & 10				
42-WD		18062,66289					15,861	0	15,861				10		SEWER EASEMENT TO CITY OF COLUMBUS, VOL. 874, PG. 189 & VOL. 981, PG. 110		
		66303															
		66284															
42-R		180602					37,256	0	37,256				6 & 13		AERIAL EASEMENT		
42-R-1		180602					459	0	459				6 & 14		AERIAL EASEMENT		
42		66120					757	0	757				6 & 13				
42-1		66120					659	0	659				6 & 13				
42-2		66119					845	0	845				6 & 13				
42-3		180602					296	0	296				6 & 13				
42-4		180602					315	0	315				6 & 13				
42-5		180602					649	0	649				6 & 13				
42-S		66119, 66120					2286	0	2286				6 & 13				
42-T		66303, 180602					43,445	0	43,445				10		CONRAIL SERVICE ROAD		
42-U		66120					7,015	0	7,015				6, 13A				
42 S-3		66303					385	0	385				10				
42 U-1		66303, 66114					80,133	0	80,133				8 & 10				
43	NOT USED																
44-R	CHESAPEAKE & OHIO RAILROAD	66165					17,302	0	17,302				6 & 12		AERIAL EASEMENT		
44		66165					729	0	729				6 & 12				
44-1		66165					649	0	649				6 & 12				
44-2		66166					419	0	419				6 & 12				
44-S		66165					2838	0	2838				6 & 12				
44-U		66166					19,212	0	19,212				6, 12A				
44-S-1		66165					1,896	0	1,896				6 & 12				
45-101	NOT USED																
102-WD	WHITE CASTLE SYSTEMS, INC.	44700	990	431	464,525 S.F.	0	1,638	0	1,638	NO	463,201	0	7				
102-S		44700					2246	0	2246				6				
103-WD	MICHAEL RADTKE	23279, 23756	01496D12		17,960 S.F.	0	13,667	0	13,667	YES	0	0	7				
103-T		23756, 23279	01496D13				4,293	0	4,293				7		BUILDING REMOVAL		
103 E		23756, 23279	01496D13				4,293	0	4,293				7				
103-WL	MICHAEL RADTKE	42958, 22704	01496D12		5,058 S.F.	0	5,058	0	5,058	NO	0	0	7		TOTAL TAKE		
104-105	NOT USED																
102-WL	WHITE CASTLE SYSTEMS, INC.	1697	2404	626	62,120 S.F.	0	14	0	14	NO	54,994	0	7				
102-S-1		1697					340	0	340				7				
102-WD-1		1697					7,112	0	7,112				7		SPRUCE STREET ACCESS		
106-WL	M.Q. REALTY CORPORATION	57658	1520	163	73,619 S.F.	0	18,274	0	18,274	YES	54,118	0	6				
106-WL-1		57658					1,227	0	1,227	NO			6				
106A-WL	M.Q. REALTY CORPORATION	66599	1588	384	1,740 S.F.	0	1,740	0	1,740	NO	0	0	8		TOTAL TAKE		
106-S		57658					9,976	0	9,976				6		1,575 S.F. OVERLAP WITH 106T		
106-T		57658					20,598	0	20,598				6		BUILD. REMOVED. 1,575 S.F. OVERLAP WITH 106T		
106-WU		57658					112	0	112				6		TITLE TO BE ACQUIRED IN THE NAME OF CONSOLIDATED RAIL CORPORATION		
107-WL	COLUMBUS & SOUTHERN OHIO ELECTRIC COMPANY	4635	3669	846-847	80,524 S.F.	0	14,632	0	14,632	NO	0	0	6		TOTAL TAKE		
107-WL-1		4635, 5374					62,341	0	62,341				6 & 8				
		5929, 6189															

STATE PROJECT NO'S.  
 B-2 06008(0)  
 B-3 06009(0)

FEDERAL PROJECT NO'S.  
 IR-670-6(52)98 B-2  
 M-1K78(4) B-2  
 IR-670-6(53)98 B-3

\* NOTE: ALL AREAS ARE SHOWN IN SQUARE FEET.

FUNDING LEGEND  
 1. = IR-670-6(52)98 B-2  
 2. = M-1K78(4) B-2  
 3. = IR-670-6(53)98 B-3

NAME	REVISION	DATE
J.S.N.	Rev'd Pcl. 102 to Pcl. 103	8/20/97
J.S.N.	Rev'd Pcl. 105 to Pcl. 102	8/20/97
B.H.B.	Added Parcel 102-U	12/21/99
B.H.B.	Added Pcls. 42U, 42U-1, 444U	6/9/09
B.H.B.	Changed Pcls 42WL2-42WD	4/15/08

R/W SUMMARY SHEET

# SUMMARY OF ADDITIONAL RIGHT OF WAY

CALC. BY. \_\_\_\_\_ DATE \_\_\_\_\_  
 CHKD. BY. \_\_\_\_\_ DATE \_\_\_\_\_  
 OHIO F.H.W.A. REGION 5  
 FRA - 670-1.25 (B-2 & B-3)  
 FRANKLIN COUNTY LIMITED ACCESS - R/W PLANS

4  
14

PARCEL N <sup>o</sup>	OWNER	AUDITOR'S PARCEL N <sup>o</sup>	OWNER RECORD		RECORD AREA *	TOTAL P.R.O.	TO BE ACQUIRED				NET RESIDUE		SHEET N <sup>o</sup>	TYPE FUNDS PROJECT	REMARKS	AS ACQUIRED	
			BOOK	PAGE			GROSS TAKE*	P.R.O. IN TAKE	NET TAKE LAND*	BLDG.	LEFT*	RIGHT*				BOOK	PAGE
107-WU		4635	3669	849			3,551	0	3,551	NO			6		TITLE TO BE ACQUIRED IN NAME OF CONSOLIDATED RAIL CORPORATION		
108-WL	OHIO PROPERTIES INCORPORATED	13927,16664 38577,45079	3324	198	30,193 S.F.	0	30,193	0	30,193	YES	0	0	7		TOTAL TAKE		
109-WL	M. Q. REALTY CORPORATION	3214,5590 32130	1807 1708	555 453	51,948 S.F.	0	51,948	0	51,948	YES	0	0	9		TOTAL TAKE		
			2365	429													
110-WL	WEINMAN PUMP MANUFACTURING	53678	2352	401	72,625 S.F.	0	72,625	0	72,625	NO	0	0	9		TOTAL TAKE		
111-WL 111-T	WEINMAN PUMP MANUFACTURING	54167,41244 25364			113,387 S.F.	0	35,890 77,515	0	35,890 77,515	YES	0	77,515	11 11		BUILDING REMOVAL		
Δ 42A-WL	CONSOLIDATED RAIL CORPORATION	66112,66113,66115 66114,66303			415,313 S.F.	0	234,316	0	234,316	NO	0	78,025	8,10				
Δ 42A-WD		66284,66285 66303					102,972	0	102,972				10				
Δ 42A-T		66111,66112 66289					35,963	0	35,963				10		WALL REMOVAL		
Δ 42A-U		66111,66112 66289					28,319	0	28,319				10				
Δ 42S-1	CONSOLIDATED RAIL CORPORATION	180602,66120				0	3,136	0	3,136				6,13				
Δ 42S-2		180602				0	535	0	535				6,13				

STATE PROJECT NO'S.  
 B-2 06008(0)  
 B-3 06009(0)  
 FEDERAL PROJECT NO'S.  
 IR-670-6(52)98 B-2  
 M-1K78(4) B-2  
 IR-670-6(53)98 B-3

Δ INDICATES PARCEL OUT OF ORDER

\* NOTE: ALL AREAS ARE SHOWN IN SQUARE FEET.

FUNDING LEGEND

- 1. = IR-670-6(52)98 B-2
- 2. = M-1K78(4) B-2
- 3. = IR-670-6(53)98 B-3

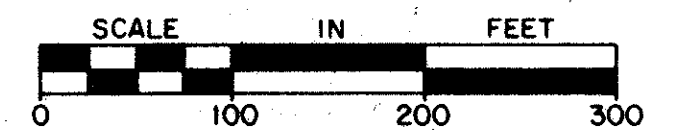
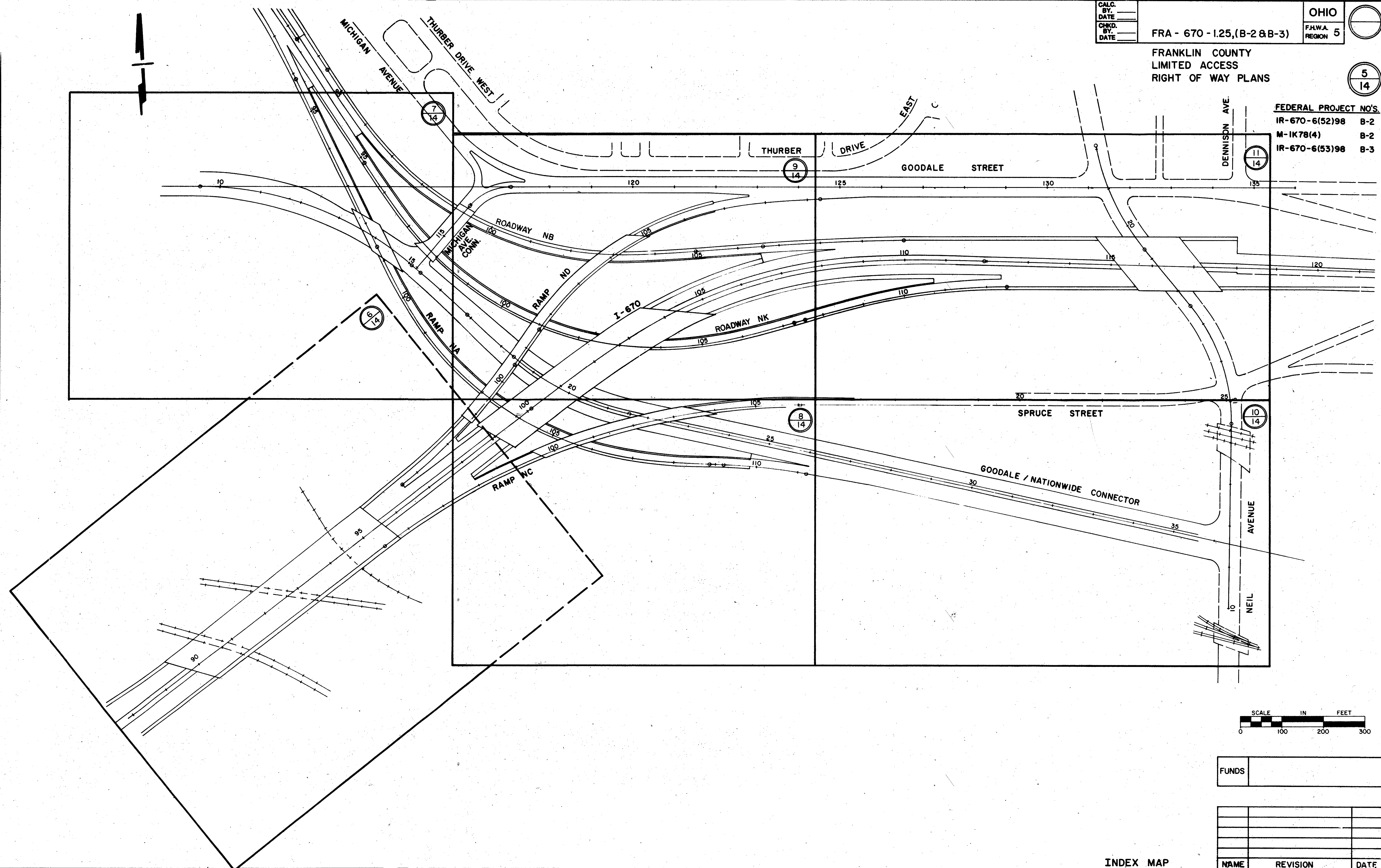
R/W SUMMARY SHEET

D.M.	Rev'd Parcel 111	5/4/94
D.M.	Rev'd ownership of PCL 42A	10-21-93
B.H.B.	Added Parcel 42A-U	12/21/89
B.H.B.	Added Pcls 42AWL-42AWD	4/15/88
NAME	REVISION	DATE

FRANKLIN COUNTY  
LIMITED ACCESS  
RIGHT OF WAY PLANS

FEDERAL PROJECT NO'S.

IR-670-6(52)98	B-2
M-1K78(4)	B-2
IR-670-6(53)98	B-3



FUNDS	
-------	--

NAME	REVISION	DATE

INDEX MAP

CITY OF COLUMBUS, FRANKLIN COUNTY, ORIGINAL MARION TOWNSHIP, T 5 N, R 22 W  
R/W CURVES

CALC. BY: \_\_\_\_\_  
DATE: \_\_\_\_\_  
CHKD. BY: \_\_\_\_\_  
DATE: \_\_\_\_\_

FRA - 670 - 1.25, (B-2 & B-3)

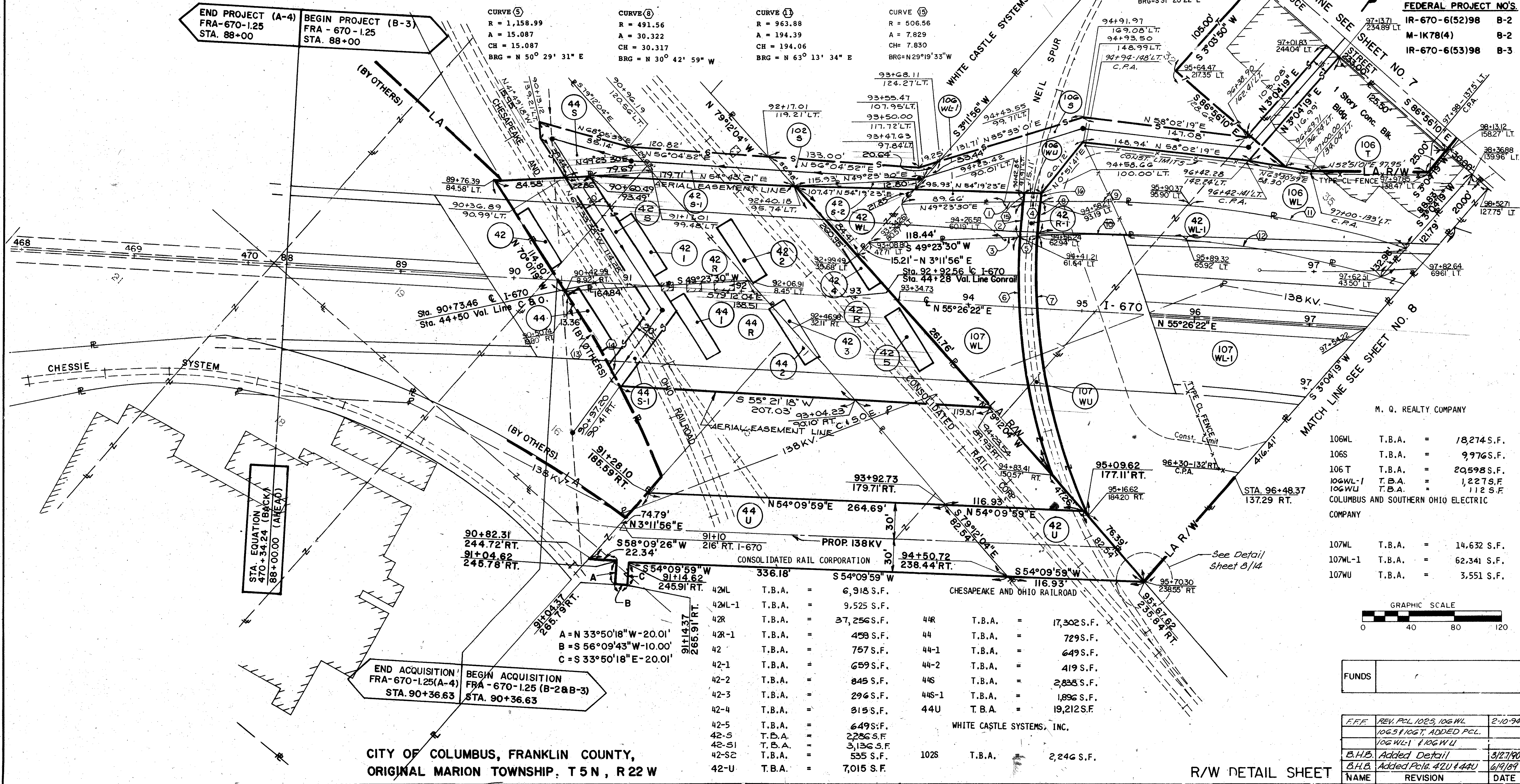
OHIO REGION 5

6  
14

<b>CURVE ①</b> R = 1,188.99 A = 19.51 CH = 19.51 BRG = N 49° 51' 43" E	<b>CURVE ③</b> R = 1,158.99 A = 14.697 CH = 14.697 BRG = N 49° 46' 02" E	<b>CURVE ⑤</b> R = 506.56 A = 218.042 CH = 216.363 BRG = N 45° 48' 36" W	<b>CURVE ⑦</b> R = 1,188.99 A = 132.193 CH = 132.125 BRG = N 54° 15' 46" E	<b>CURVE ⑨</b> R = 933.88 A = 174.893 CH = 174.638 BRG = S 62° 48' 49" W	<b>CURVE ⑪</b> R = 1,146.28 A = 21.88 CH = 21.88 BRG = N 66° 20' 37" W
<b>CURVE ②</b> R = 506.56 A = 30.32 CH = 30.315 BRG = N 31° 29' 16" W	<b>CURVE ④</b> R = 1,188.99 A = 15.491 CH = 15.491 BRG = N 50° 42' 18" E	<b>CURVE ⑥</b> R = 491.56 A = 257.332 CH = 254.404 BRG = N 48° 17' 28" W	<b>CURVE ⑧</b> R = 1,158.99 A = 133.184 CH = 133.111 BRG = S 54° 09' 24" W	<b>CURVE ⑩</b> R = 963.88 A = 194.39 CH = 194.06 BRG = N 63° 13' 34" E	<b>CURVE ⑫</b> R = 506.56 A = 7.829 CH = 7.830 BRG = N 29° 19' 33" W
<b>CURVE ⑬</b> R = 1,158.99 A = 15.087 CH = 15.087 BRG = N 50° 29' 31" E	<b>CURVE ⑭</b> R = 491.56 A = 30.322 CH = 30.317 BRG = N 30° 42' 59" W	<b>CURVE ⑮</b> R = 963.88 A = 194.39 CH = 194.06 BRG = N 63° 13' 34" E	<b>CURVE ⑯</b> R = 506.56 A = 7.829 CH = 7.830 BRG = N 29° 19' 33" W	<b>CURVE ⑰</b> R = 491.56 A = 257.332 CH = 254.404 BRG = N 48° 17' 28" W	<b>CURVE ⑱</b> R = 1,188.99 A = 15.491 CH = 15.491 BRG = N 50° 42' 18" E

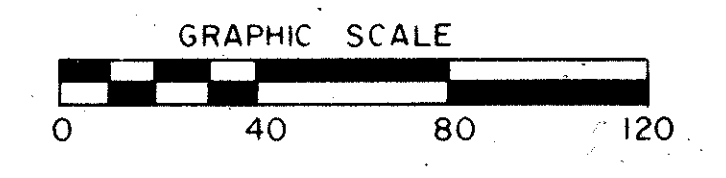
FRANKLIN COUNTY  
LIMITED ACCESS  
RIGHT OF WAY PLANS

FEDERAL PROJECT NO'S.  
IR-670-6(52)98 B-2  
M-1K78(4) B-2  
IR-670-6(53)98 B-3



M. Q. REALTY COMPANY

106WL	T.B.A.	=	18,274 S.F.
106S	T.B.A.	=	9,976 S.F.
106T	T.B.A.	=	20,598 S.F.
106WL-1	T.B.A.	=	1,227 S.F.
106WU	T.B.A.	=	112 S.F.
COLUMBUS AND SOUTHERN OHIO ELECTRIC COMPANY			
107WL	T.B.A.	=	14,632 S.F.
107WL-1	T.B.A.	=	62,341 S.F.
107WU	T.B.A.	=	3,551 S.F.



CITY OF COLUMBUS, FRANKLIN COUNTY,  
ORIGINAL MARION TOWNSHIP, T 5 N, R 22 W

42WL	T.B.A.	=	6,918 S.F.	44R	T.B.A.	=	17,302 S.F.
42WL-1	T.B.A.	=	9,525 S.F.	44	T.B.A.	=	729 S.F.
42R	T.B.A.	=	37,256 S.F.	44-1	T.B.A.	=	649 S.F.
42R-1	T.B.A.	=	459 S.F.	44-2	T.B.A.	=	419 S.F.
42	T.B.A.	=	757 S.F.	44S	T.B.A.	=	2,838 S.F.
42-1	T.B.A.	=	659 S.F.	44S-1	T.B.A.	=	1,896 S.F.
42-2	T.B.A.	=	845 S.F.	44U	T.B.A.	=	19,212 S.F.
42-3	T.B.A.	=	296 S.F.				
42-4	T.B.A.	=	315 S.F.				
42-5	T.B.A.	=	649 S.F.				
42-S	T.B.A.	=	2,286 S.F.				
42-S1	T.B.A.	=	3,136 S.F.	102S	T.B.A.	=	2,246 S.F.
42-S2	T.B.A.	=	535 S.F.				
42-U	T.B.A.	=	7,015 S.F.				

WHITE CASTLE SYSTEMS, INC.

FUNDS	
-------	--

FFF	REV. PCL 102S, 106WL	2-10-94
	106S, 106T, ADDED PCL	
	106WL-1, 106WU	
B.H.B.	Added Detail	3/27/90
B.H.B.	Added Pcls. 42U & 44U	6/9/89
NAME	REVISION	DATE

R/W DETAIL SHEET

CITY OF COLUMBUS, FRANKLIN COUNTY  
ORIGINAL MARION TOWNSHIP, T 5 N, R 22 W

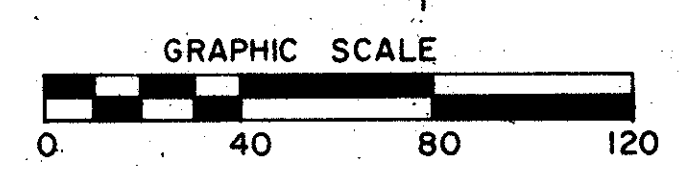
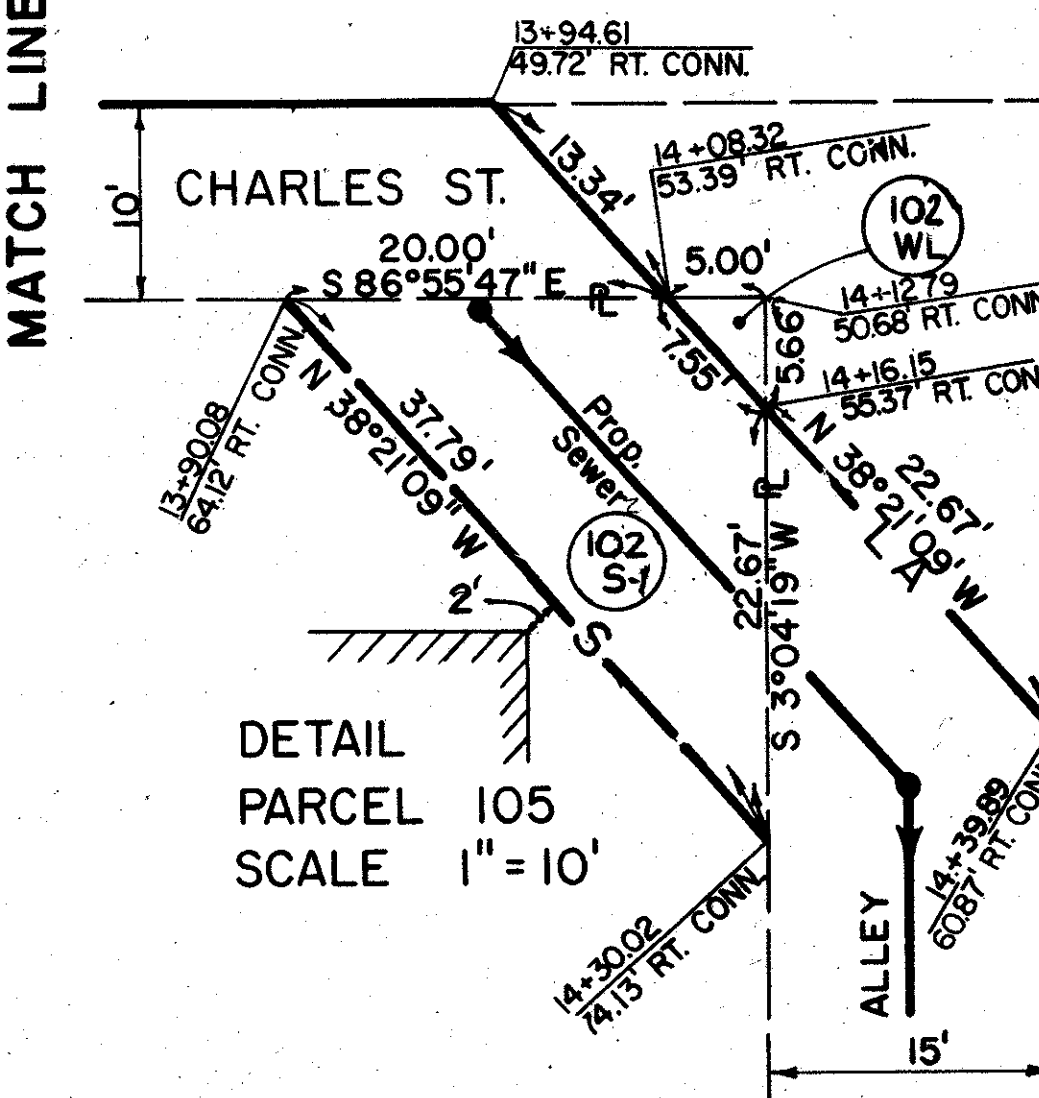
FRANKLIN COUNTY  
LIMITED ACCESS  
RIGHT OF WAY PLANS

FEDERAL PROJECT NO'S  
IR-670-6(52)98 B-2  
M-1K78(4) B-2  
IR-670-6(53)98 B-3

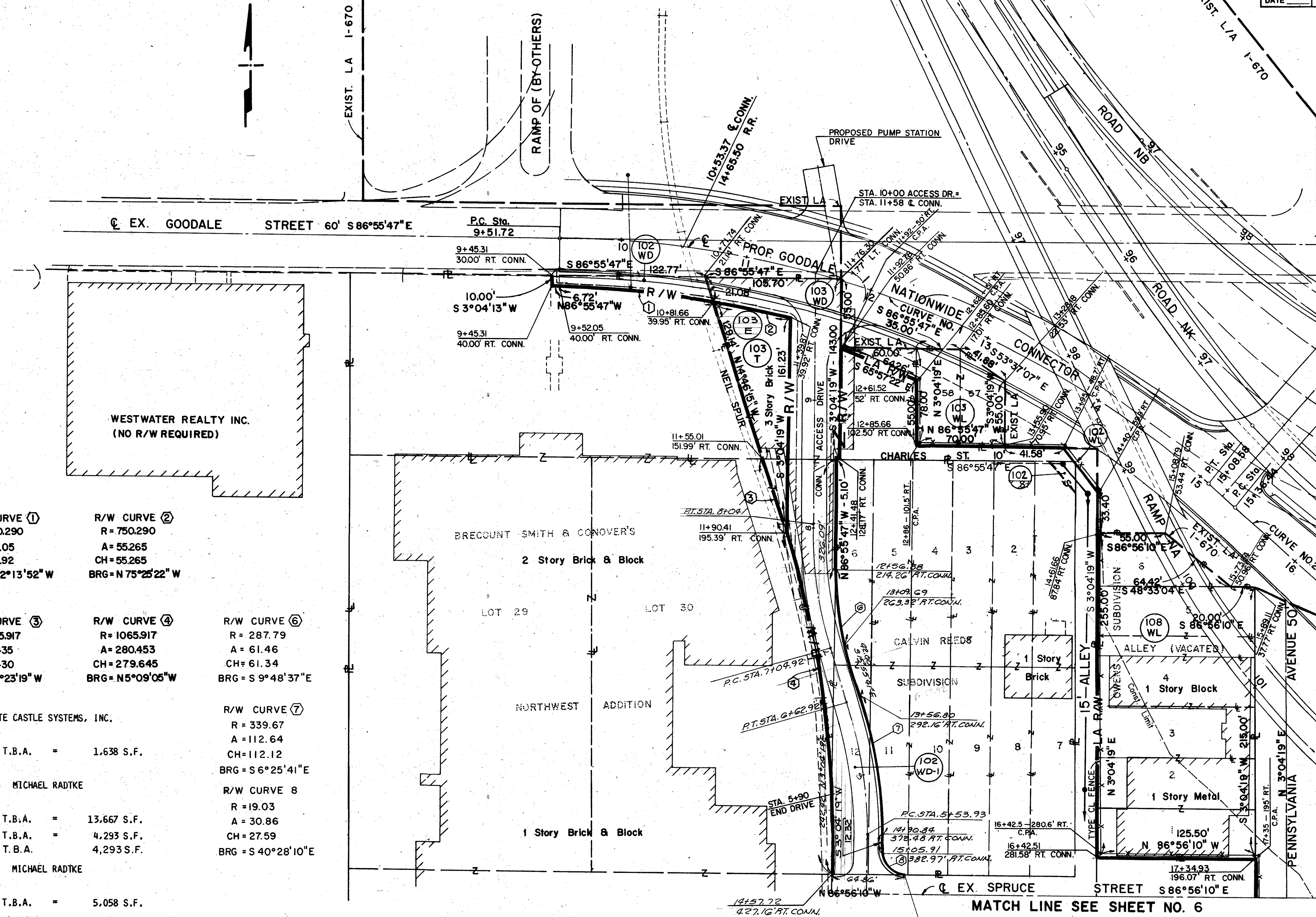
CENTERLINE GOODALE / NATIONWIDE  
BLVD. CONNECTOR CURVE DATA

CURVE NO. 1	CURVE NO. 2
P.I. STA. 12+42.27	P.I. STA. 16+12.16
$\Delta = 40^{\circ}22'19''$ RT.	$\Delta = 3^{\circ}01'41''$ RT.
$D_c = 7^{\circ}15'00''$	$D_c = 2^{\circ}00'00''$
R = 790.29'	R = 2864.79'
L = 556.86'	L = 151.40'
T = 290.55'	T = 75.72'
C.H. = 545.41'	C.H. = 151.39'
E = 51.72'	E = 1.00'

MATCH LINE SEE SHEET NO. 9



FUNDS	REVISION	DATE
R.D.M.	Deleted Pct. 102 U	11-17-95
FFF	ADDED PCL 102 WD-1	2-18-94
S.E.N.	PCL 104 TO PCL 103	8/20/94
S.E.N.	PCL 105 TO PCL 102	8/20/94
B.H.B.	Added Parcel 102 U	12/21/99



R/W CURVE ①	R/W CURVE ②
R = 750.290	R = 750.290
A = 123.05	A = 55.265
CH = 122.92	CH = 55.265
BRG = N 82°13'52" W	BRG = N 75°25'22" W

R/W CURVE ③	R/W CURVE ④	R/W CURVE ⑥
R = 1065.917	R = 1065.917	R = 287.79
A = 51.435	A = 280.453	A = 61.46
CH = 51.430	CH = 279.645	CH = 61.34
BRG = N 13°23'19" W	BRG = N 5°09'05" W	BRG = S 9°48'37" E

R/W CURVE ⑦	R/W CURVE ⑧
R = 339.67	R = 19.03
A = 112.64	A = 30.86
CH = 112.12	CH = 27.59
BRG = S 6°25'41" E	BRG = S 40°28'10" E

WHITE CASTLE SYSTEMS, INC.	OHIO PROPERTIES INCORPORATED
102ND T.B.A. = 1.638 S.F.	108WL T.B.A. = 30.193 S.F.
103ND T.B.A. = 13.667 S.F.	
103T T.B.A. = 4,293 S.F.	
103E T.B.A. = 4,293 S.F.	
103WL T.B.A. = 5,058 S.F.	
102WL T.B.A. = 14 S.F.	
102S-1 T.B.A. = 340 S.F.	
102WD-1 T.B.A. = 7,112 S.F.	

CITY OF COLUMBUS, FRANKLIN COUNTY,  
ORIGINAL MARION TOWNSHIP, T 5 N, R 22 W

R/W DETAIL SHEET

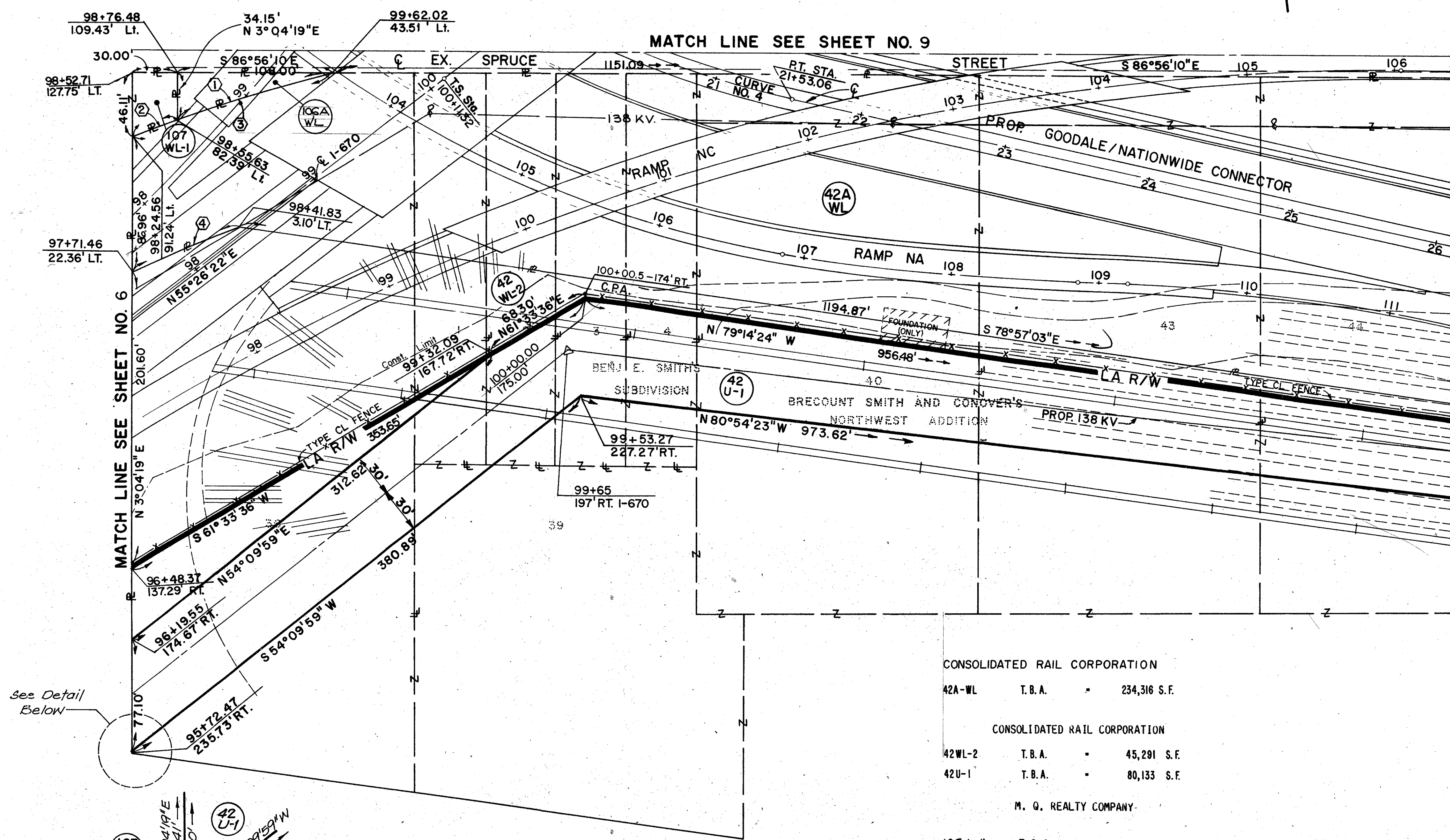


CITY OF COLUMBUS, FRANKLIN COUNTY,  
ORIGINAL MARION TOWNSHIP, T 5 N, R 22 W

CALC. BY. _____	OHIO
DATE _____	F.H.W.A. REGION 5
CHKD. BY. _____	8
DATE _____	14

FRANKLIN COUNTY  
LIMITED ACCESS  
RIGHT OF WAY PLANS  
FEDERAL PROJECT NO'S  
IR-670-6(52)98 B-2  
M-1K78(4) B-2  
IR-670-6(53)98 B-3

R/W CURVE ①	R/W CURVE ②	R/W CURVE ③	R/W CURVE ④
R = 995.37'	R = 995.37'	R = 995.37'	R = 915.37'
A = 113.34'	A = 32.30'	A = 145.64'	A = 72.98'
CH = 113.27'	CH = 32.30'	CH = 145.51'	CH = 72.96'
BRG = S 75°31'03" W	BRG = S 71°19'45" W	BRG = S 74°35'19" W	BRG = N 70°45'00" E



MATCH LINE SEE SHEET NO. 10

④ I-670 CURVE DATA NO. 1

P.I. STA. 106+20.40	Δc = 19°07'35" RT.
Δ = 39°07'35" RT.	Dc = 5°00'00"
Ts = 609.08'	R = 1145.92'
Es = 76.37'	L = 193.06'
O = 10°00'00"	Tc = 382.53'
Ls = 400.00'	CH = 380.75'
L.T. = 267.09'	Ec = 16.15'
S.T. = 133.72'	

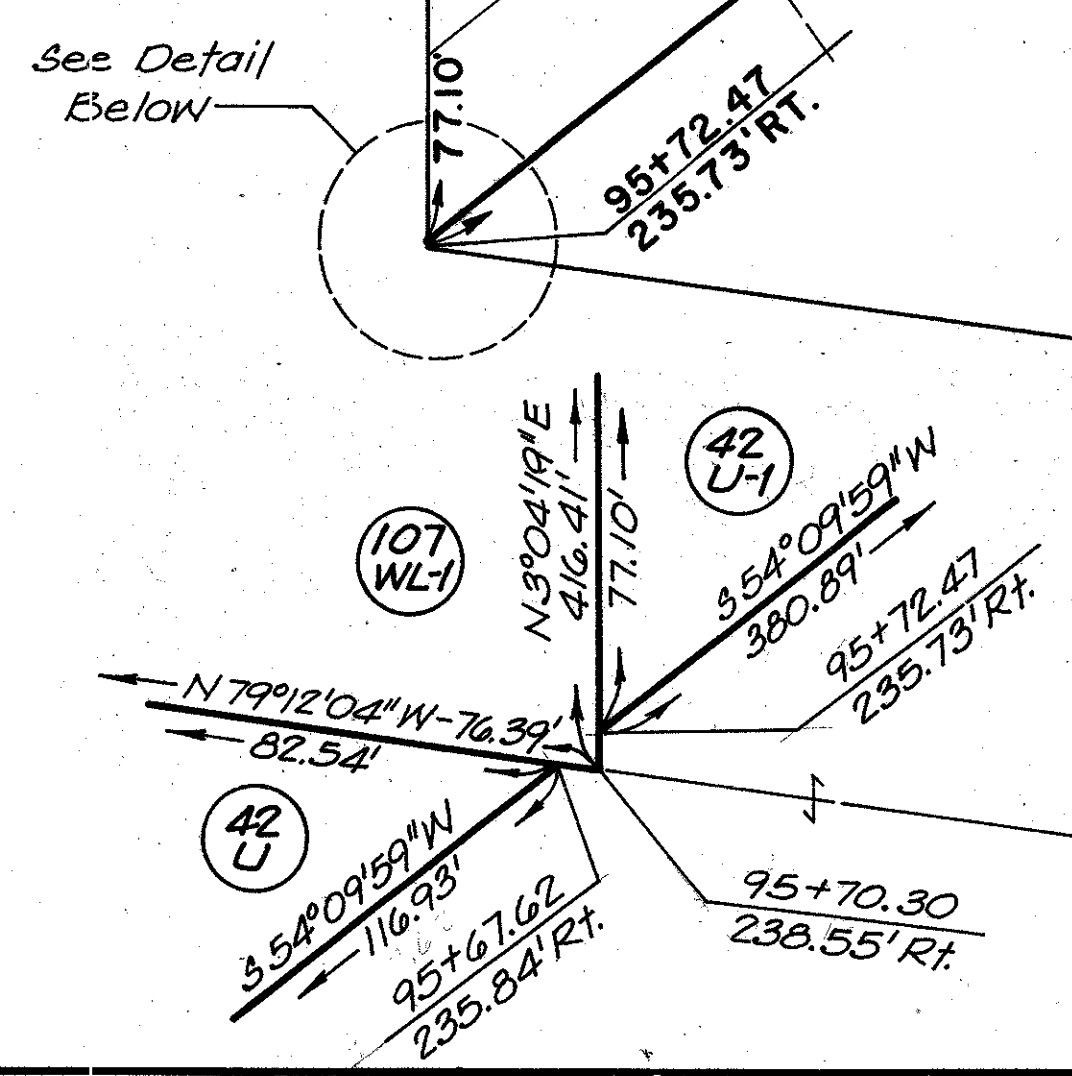
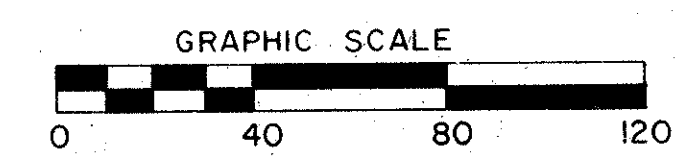
SUBSTITUTE CURVE DATA FOR RIGHT OF WAY

① P.I. STA. 102+78.41	L = 266.76'
② P.I. STA. 109+27.57	C.H. = 266.42'
Δ = 10°00'00"	E = 5.84'
R = 1528.43'	
T = 133.72'	

CENTERLINE  
GOODALE / NATIONWIDE BLVD.  
CONNECTOR CURVE DATA

CURVE NO. 4
P.I. STA. 19+99.41
Δ = 28°14'32" LT.
Dc = 9°00'00"
R = 636.62'
L = 313.80'
T = 160.16'
C.H. = 310.64'
E = 19.84'

CONSOLIDATED RAIL CORPORATION		
42A-WL	T.B.A.	= 234,316 S.F.
CONSOLIDATED RAIL CORPORATION		
42WL-2	T.B.A.	= 45,291 S.F.
42U-1	T.B.A.	= 80,133 S.F.
M. Q. REALTY COMPANY		
106AWL	T.B.A.	= 1,740 S.F.
COLUMBUS AND SOUTHERN OHIO ELECTRIC COMPANY		
107WL-1	T.B.A.	= 62,341 S.F.



CITY OF COLUMBUS, FRANKLIN COUNTY  
ORIGINAL MARION TOWNSHIP, T 5 N, R 22 W

R/W DETAIL SHEET

NAME	REVISION	DATE
B.H.B.	Corr. Dim. Pcl. 42AWL	5-30-97
D.M.	Rev'd. ownership of PCL 42A	10-21-93
B.H.B.	Added Detail	3/27/90
B.H.B.	Added Parcel 42U-1	6/19/89
B.H.B.	Added Parcel 42AWL	4/15/88

CITY OF COLUMBUS, FRANKLIN COUNTY,  
ORIGINAL MARION TOWNSHIP, T5N, R22W

CALC. BY:		OHIO
DATE:		F.H.W.A. REGION 5
CHKD. BY:	FRA-670-1.25, (B-2&B-3)	
DATE:		

FRANKLIN COUNTY  
LIMITED ACCESS  
RIGHT OF WAY PLANS

FEDERAL PROJECT NO'S.

IR-670-6(52)98	B-2
M-1K78(4)	B-2
IR-670-6(53)98	B-3

☉ I-670 CURVE DATA NO. 1

P.I. STA. 106+20.40

$\Delta = 39^{\circ}07'35''$ RT.	$\Delta_c = 19^{\circ}07'35''$ RT.
$T_s = 609.08'$	$D_c = 5^{\circ}00'00''$
$E_s = 76.37'$	$R = 1145.92'$
$O = 10^{\circ}00'00''$	$T = 193.06'$
$L_s = 400.00'$	$L_c = 382.53'$
$L.T. = 267.09'$	$C.H. = 380.75'$
$S.T. = 133.72'$	$E_c = 16.15'$

SUBSTITUTE CURVE DATA  
FOR  
RIGHT OF WAY

① P.I. STA. 102+78.41	L = 266.76'
② P.I. STA. 109+27.57	L = 266.42'
$\Delta = 10^{\circ}00'00''$	C.H. = 266.42'
$R = 1528.43'$	E = 5.84'
$T = 133.72'$	

CENTERLINE GOODALE / NATIONWIDE  
BLVD. CONNECTOR CURVE DATA

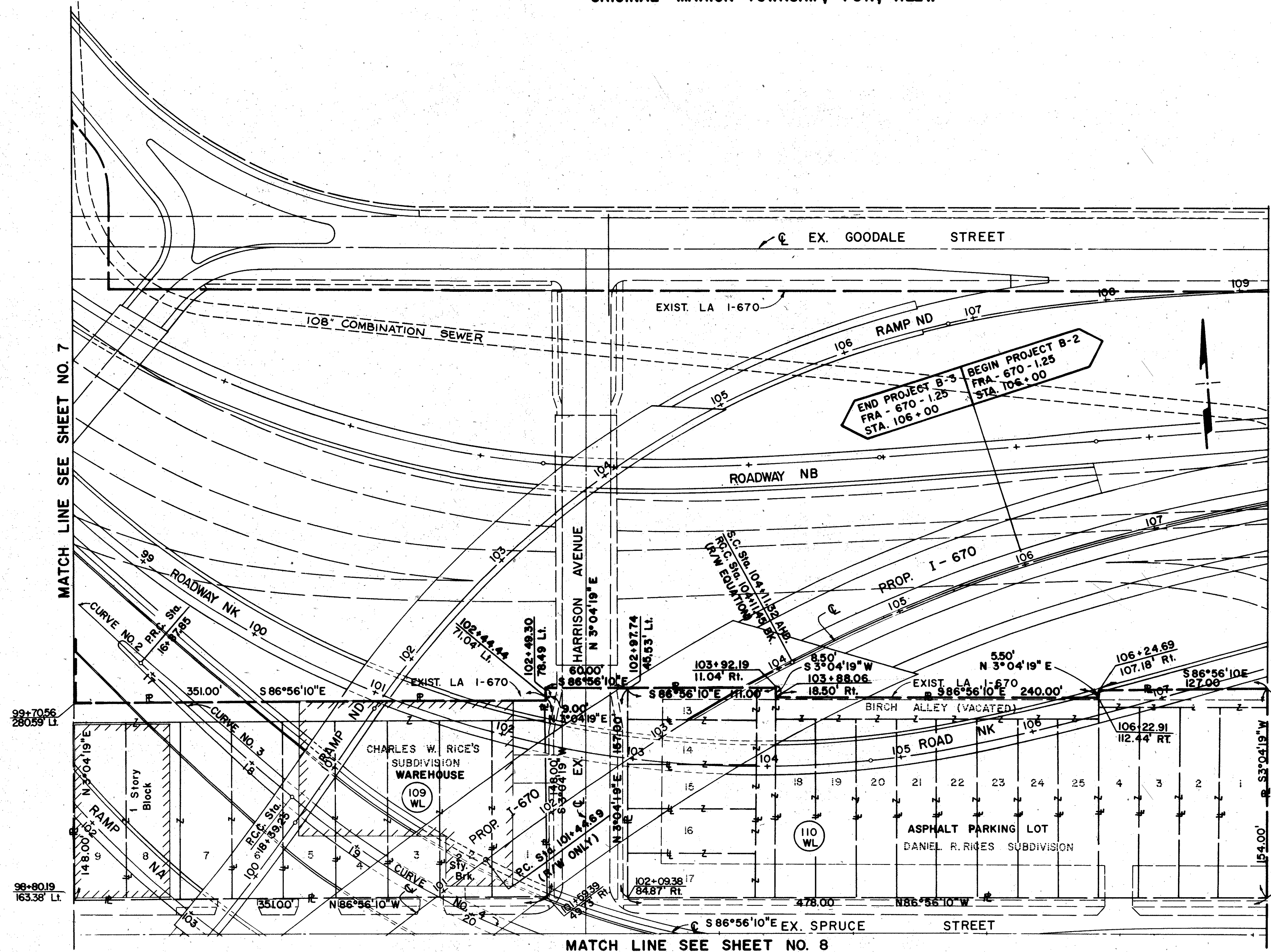
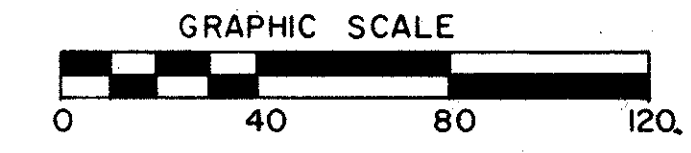
CURVE NO. 2	CURVE NO. 3	CURVE NO. 4
P.I. STA. 16+12.16	P.I. STA. 17+63.60	P.I. STA. 19+99.41
$\Delta = 3^{\circ}01'41''$ RT.	$\Delta = 3^{\circ}01'41''$ LT.	$\Delta = 28^{\circ}14'32''$ LT.
$D_c = 2^{\circ}00'00''$	$D_c = 2^{\circ}00'00''$	$D_c = 9^{\circ}00'00''$
$R = 2864.79'$	$R = 2864.79'$	$R = 636.62'$
$L = 151.40'$	$L = 151.40'$	$L = 313.80'$
$T = 75.72'$	$T = 75.72'$	$T = 160.16'$
$C.H. = 151.39'$	$C.H. = 151.39'$	$C.H. = 310.64'$
$E = 1.00'$	$E = 1.00'$	$E = 19.84'$

M. G. REALTY COMPANY

109WL T.B.A. = 51,948 S.F.

WEINMAN PUMP MANUFACTURING COMPANY

110WL T.B.A. = 72,625 S.F.



MATCH LINE SEE SHEET NO. 8

CITY OF COLUMBUS, FRANKLIN COUNTY,  
ORIGINAL MARION TOWNSHIP, T5N, R22W

R/W DETAIL SHEET

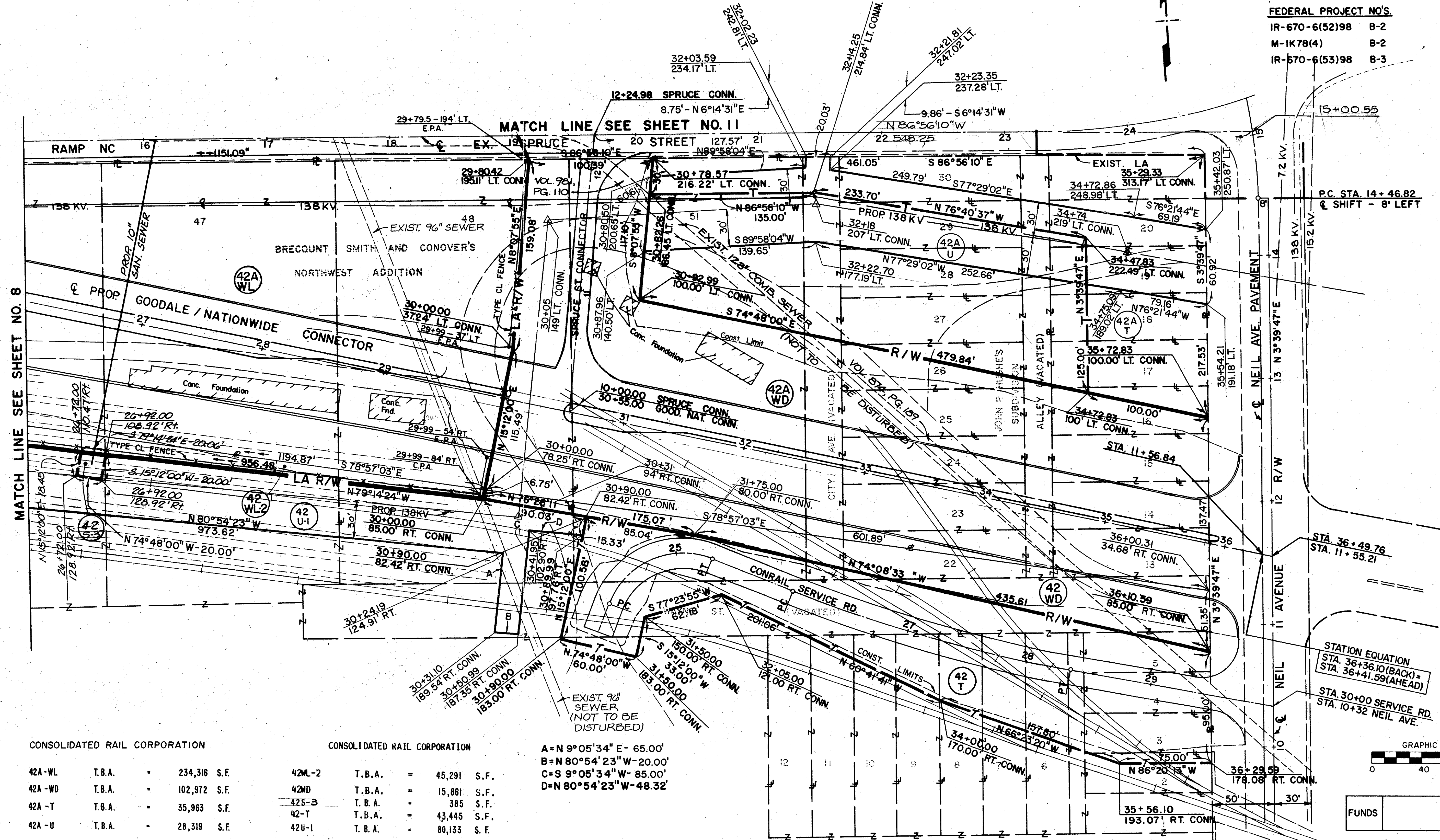
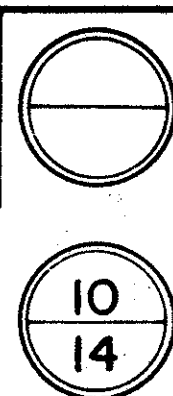
FUNDS	
NAME	REVISION
	DATE

CITY OF COLUMBUS, FRANKLIN COUNTY,  
ORIGINAL MARION TOWNSHIP, T 5 N , R 22 W

CALC. BY		OHIO
DATE		F.H.W.A. REGION 5
CHKD. BY		
DATE		

FRANKLIN COUNTY  
LIMITED ACCESS  
RIGHT OF WAY PLANS

FEDERAL PROJECT NO'S.  
IR-670-6(52)98 B-2  
M-1K78(4) B-2  
IR-670-6(53)98 B-3



MATCH LINE SEE SHEET NO. 8

MATCH LINE SEE SHEET NO. 11

CONSOLIDATED RAIL CORPORATION

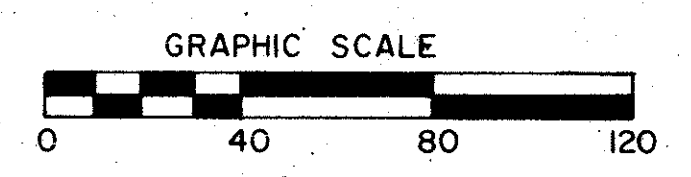
42A-WL	T.B.A.	=	234,316	S.F.
42A-WD	T.B.A.	=	102,972	S.F.
42A-T	T.B.A.	=	35,963	S.F.
42A-U	T.B.A.	=	28,319	S.F.

CONSOLIDATED RAIL CORPORATION

42M-2	T.B.A.	=	45,291	S.F.
42ND	T.B.A.	=	15,861	S.F.
42S-3	T.B.A.	=	385	S.F.
42-T	T.B.A.	=	43,445	S.F.
42U-1	T.B.A.	=	80,133	S.F.

A = N 9°05'34" E - 65.00'  
B = N 80°54'23" W - 20.00'  
C = S 9°05'34" W - 85.00'  
D = N 80°54'23" W - 48.32'

STATION EQUATION  
STA. 36+36.10 (BACK) =  
STA. 36+41.59 (AHEAD)  
STA. 30+00 SERVICE RD.  
STA. 10+32 NEIL AVE.



FUNDS	
-------	--

CITY OF COLUMBUS, FRANKLIN COUNTY,  
ORIGINAL MARION TOWNSHIP, T 5 N , R 22 W

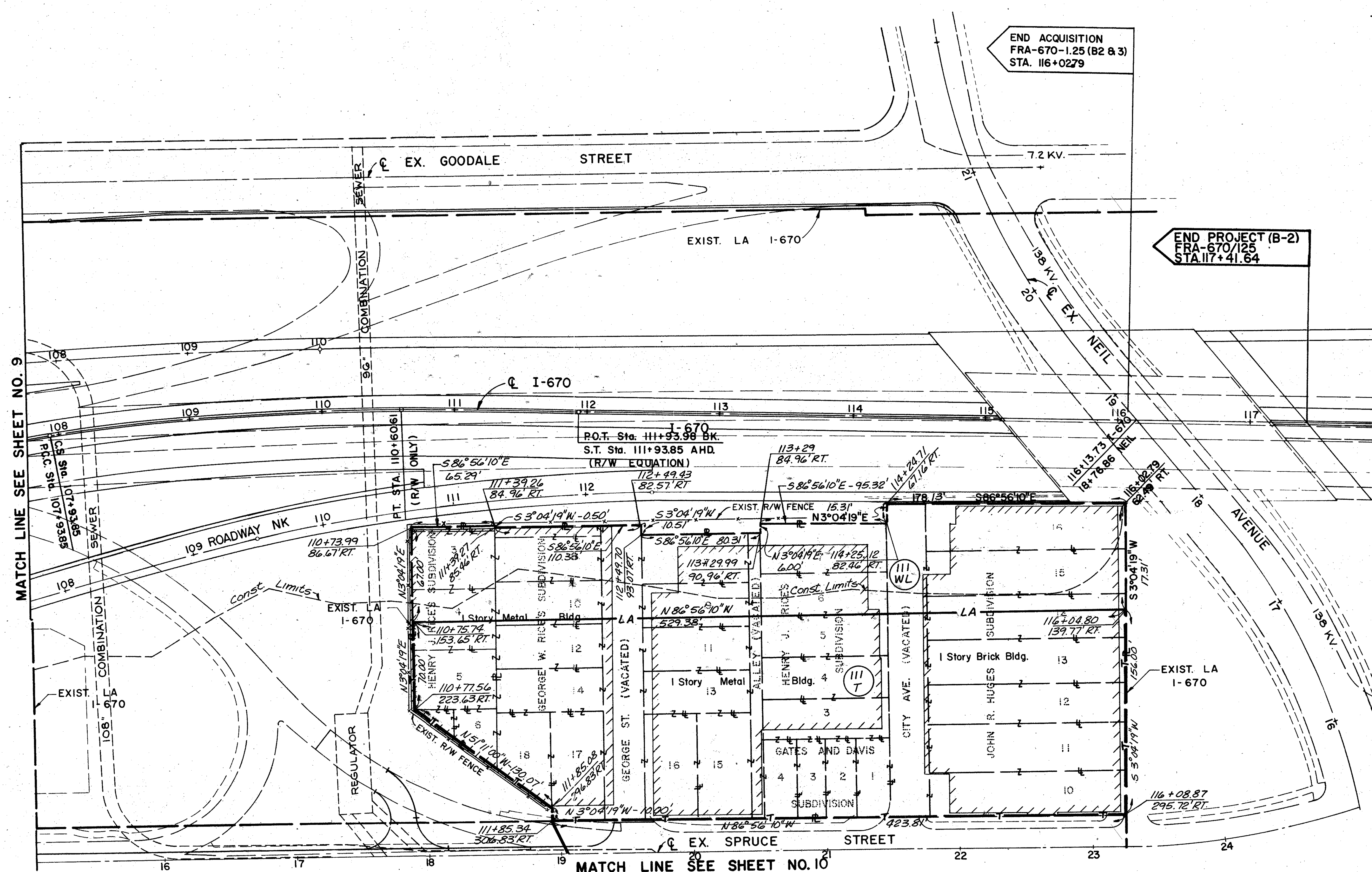
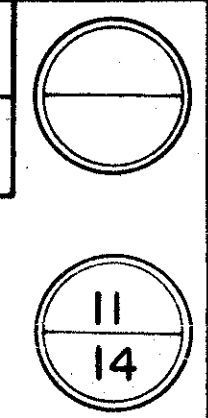
R/W DETAIL SHEET

B.H.B.	Added Spruce St.	8/30/97
D.M.	Rev'd ownership of PCL 42A	10/21/93
B.H.B.	Added Parcel 42A-U	12/21/89
B.H.B.	Added Parcel 42U-1	6/19/89
B.H.B.	Add. Pcls. 42AWL & 42AWD	4/15/88
NAME	REVISION	DATE

CITY OF COLUMBUS, FRANKLIN COUNTY,  
ORIGINAL MARION TOWNSHIP, T 5 N, R 22 W

CALC. BY. _____	OHIO
CHKD. BY. _____	F.H.W.A. REGION 5
DATE _____	

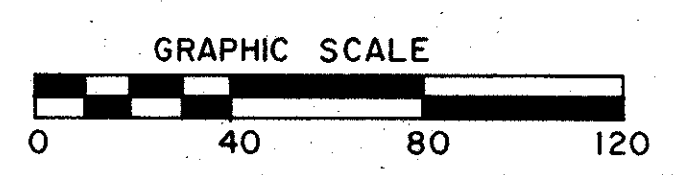
FRANKLIN COUNTY  
LIMITED ACCESS  
RIGHT OF WAY PLANS  
FEDERAL PROJECT NO'S  
IR-670-6(52)98 B-2  
M-1K78(4) B-2  
IR-670-6(53)98 B-3



**CL I-670 CURVE DATA NO. 1**  
P.I. STA. 106+20.40  
 $\Delta = 39^{\circ}07'35''$  RT.  $\Delta_c = 19^{\circ}07'35''$  RT.  
 $T_s = 609.08'$   $D_c = 5^{\circ}00'00''$   
 $E_s = 76.37'$   $R = 1145.92'$   
 $O = 10^{\circ}00'00''$   $T = 193.06'$   
 $L_s = 400.00'$   $L_c = 382.53'$   
 $L.T. = 267.09'$   $C.H. = 380.75'$   
 $S.T. = 133.72'$   $E_c = 16.15'$

**SUBSTITUTE CURVE DATA FOR RIGHT OF WAY**  
 ① P.I. STA. 102+78.41  
 ② P.I. STA. 109+27.57  
 $\Delta = 10^{\circ}00'00''$   $L = 266.76'$   
 $R = 1528.43'$   $C.H. = 266.42'$   
 $T = 133.72'$   $E = 5.84'$

WEINMAN PUMP MANUFACTURING COMPANY  
 111 WL T.B.A. = 35,890 S.F.  
 111T T.B.A. = 77,515 S.F.



MATCH LINE SEE SHEET NO. 9

MATCH LINE SEE SHEET NO. 10

CITY OF COLUMBUS, FRANKLIN COUNTY,  
ORIGINAL MARION TOWNSHIP, T 5 N, R 22 W

R/W DETAIL SHEET

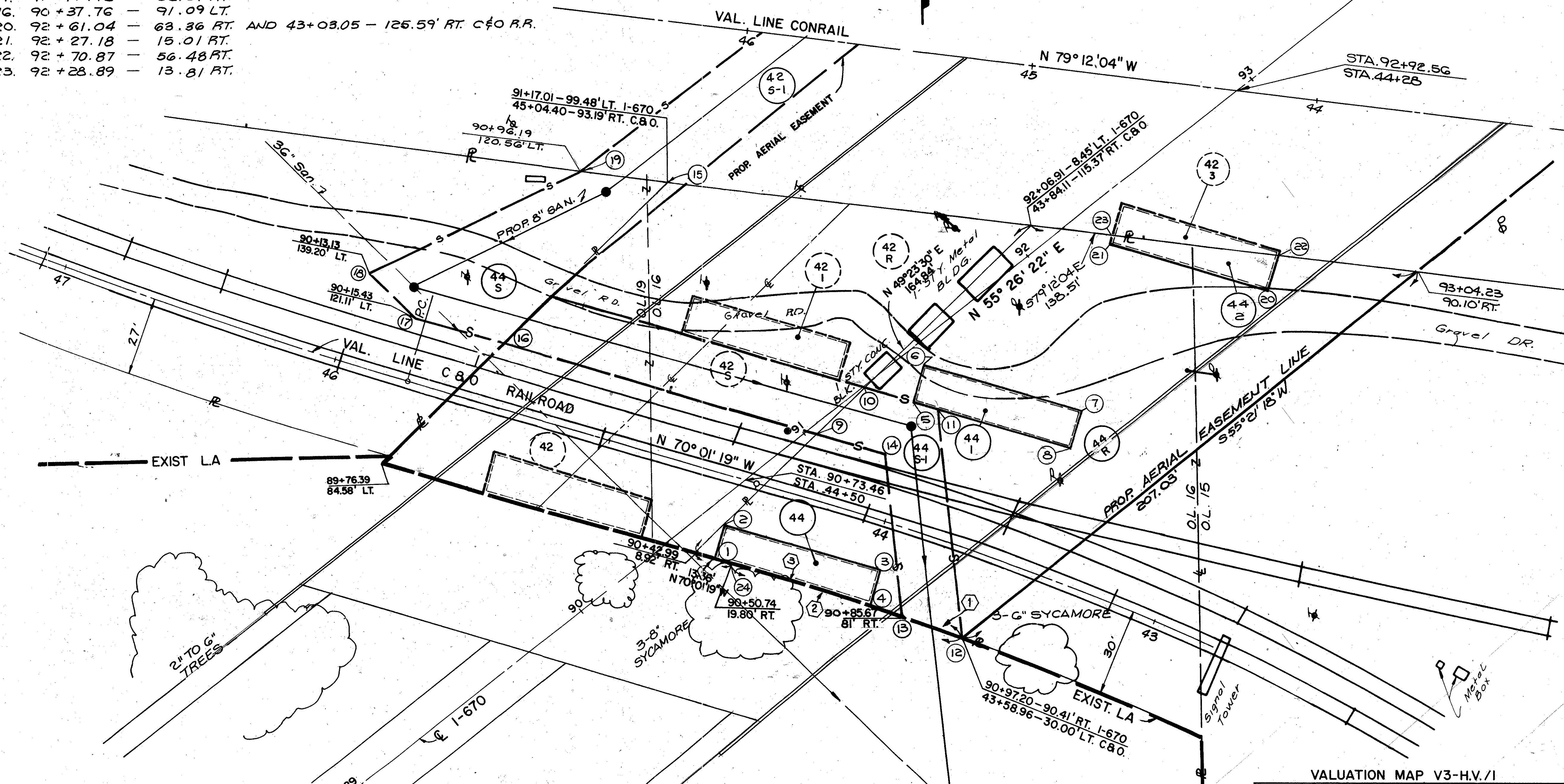
FUNDS	
D.M. Revised Parcel 111	5/4/94
NAME	REVISION
	DATE

CITY OF COLUMBUS, FRANKLIN COUNTY,  
ORIGINAL MARION TOWNSHIP, T 5 N, R 22 W

OHIO  
F.H.W.A. REGION 5  
FRA-670-1.25,(B-2&B-3)

FRANKLIN COUNTY  
LIMITED ACCESS  
RIGHT OF WAY PLANS  
FEDERAL PROJECT NO'S  
IR-670-6(52)98 B-2  
M-1K78(4) B-2  
IR-670-6(53)98 B-3

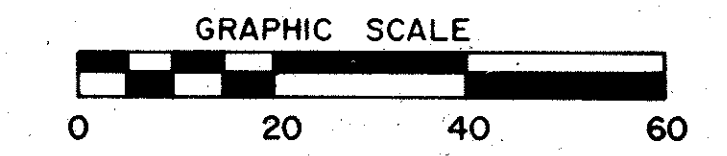
STATION	OFFSET
1. 90+48.59	14.72 RT.
2. 90+57.60	8.41 RT.
3. 90+91.46	56.77 RT. AND 43+91.15 - 17.03 LT. C&O R.R.
4. 90+82.45	63.08 RT.
5. 91+38.09	14.72 RT.
6. 91+47.10	8.41 RT.
7. 91+80.96	56.77 RT.
8. 91+71.95	63.08 RT. AND 43+44.15 - 48.19 RT. C&O R.R.
9. 91+03.31	2.53 RT.
10. 91+26.04	0.12 RT.
11. 91+41.38	22.03 RT.
14. 91+17.42	22.67 RT.
16. 90+37.76	91.09 LT.
20. 92+61.04	63.36 RT. AND 43+03.05 - 126.59' RT. C&O R.R.
21. 92+27.18	15.01 RT.
22. 92+70.87	56.48 RT.
23. 92+28.89	13.81 RT.



EASEMENT DESCRIPTIONS			
PCL	COURSE	DISTANCE	BEARING
44	1-2	12.20'	N 20°26'22" E
	2-3	59.03'	S 69°33'38" E
	3-4	12.99'	S 20°26'22" W
	24-1	5.40'	N 70°01'19" W
44-1	5-6	11.00'	N 20°26'22" E
	6-7	59.03'	S 69°33'38" E
	7-8	11.00'	S 20°26'22" W
	8-5	59.03'	N 69°33'38" W
44-S-1	9-10	22.86'	N 49°23'30" E
	10-11	26.74'	S 68°33'38" E
	11-12	81.41'	S 1°41'51" E
	12-13	21.88'	N 66°20'37" W
44-S	13-14	58.49'	N 1°41'51" W
	14-9	24.59'	N 69°33'38" W
	15-16	79.69'	S 49°23'30" W
	16-17	39.44'	N 69°33'38" W
	17-18	15.95'	N 41°49'18" W
	18-19	85.14'	N 68°05'33" E
	19-15	29.63'	S 79°12'04" E
	20-21	59.03'	N 69°33'38" W
44-2	21-23	2.08'	N 20°26'22" E
	23-22	59.88'	S 79°12'04" E
	22-20	12.11'	S 20°26'22" W

CURVE	R	A	CH	BRG
①	1146.28	21.88	21.88	N 66°20'37" W
②	1146.28	84.54	84.52	N 67°54'34" W
③	1146.28	53.65	53.64	N 68°40'52" W

PARCEL NUMBER	EASEMENT REQUIRED	TOTAL AREA	AREA OF OVERLAP		
			HIGHWAY	AERIAL	SEWER
44R	AERIAL	17302	2058	—	1896
44	HIGHWAY	729	—	729	—
44-1	HIGHWAY	649	—	649	—
44-2	HIGHWAY	419	—	419	—
44 S	SEWER	2838	—	—	—
44 S-1	SEWER	1896	—	1896	—
44U	UTILITY	19,212	—	—	—



CITY OF COLUMBUS, FRANKLIN COUNTY,  
ORIGINAL MARION TOWNSHIP, T 5 N, R 22 W

CHESAPEAKE AND OHIO RAILROAD PLAT

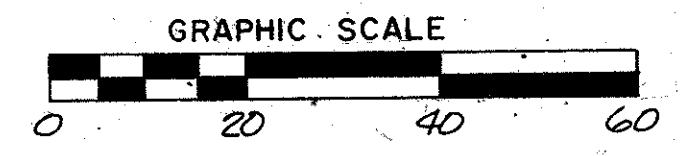
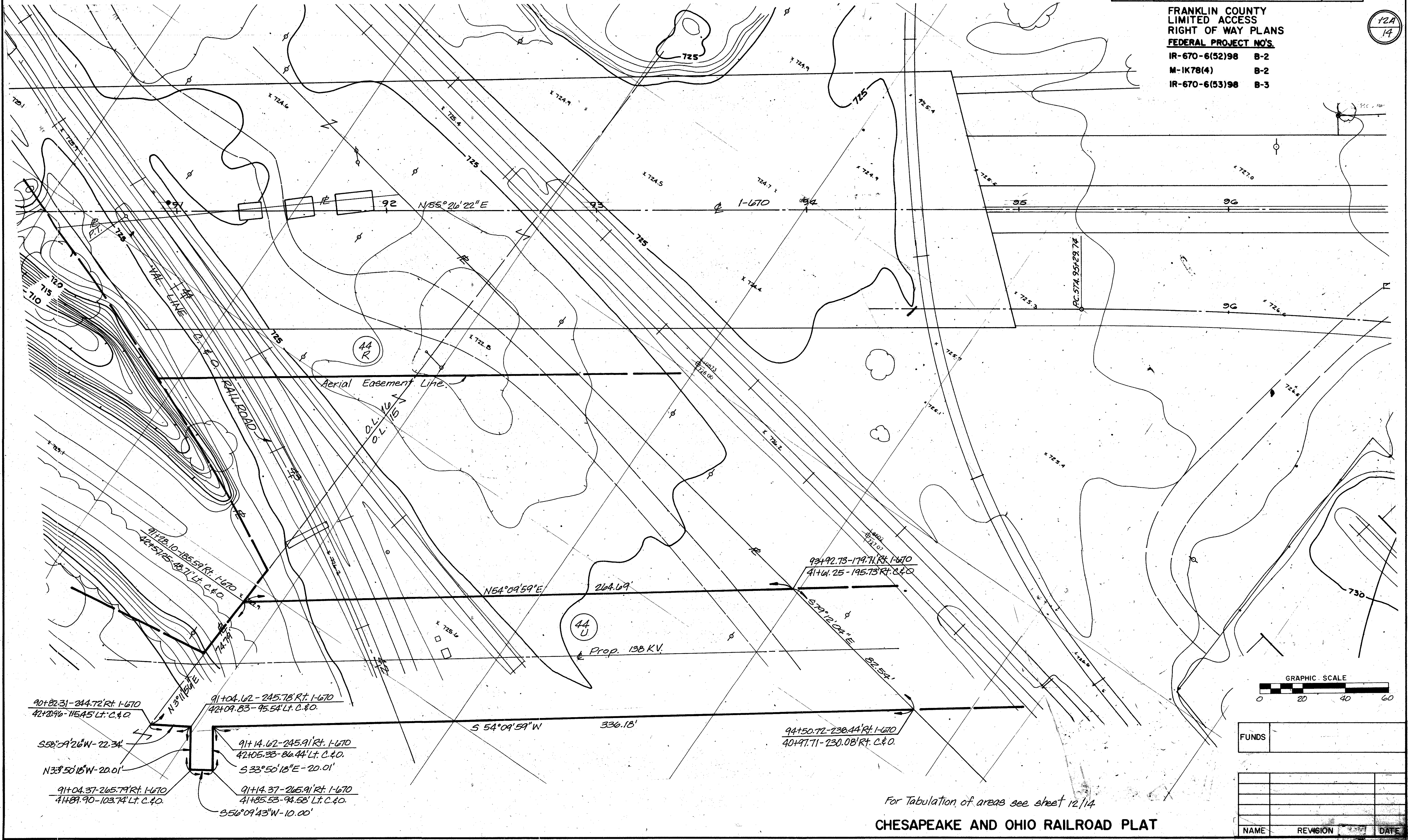
FUNDS		
NAME	REVISION	DATE

### CITY OF COLUMBUS, FRANKLIN COUNTY, ORIGINAL MARION TOWNSHIP, T 5 N, R 22 W

CALC. BY: _____	FRA - 670-1.25, (B-2 & B-3)	OHIO
DATE: _____		F.H.W.A. REGION 5
CHKD. BY: _____		
DATE: _____		

**FRANKLIN COUNTY  
LIMITED ACCESS  
RIGHT OF WAY PLANS**  
**FEDERAL PROJECT NO'S**  
 IR-670-6(52)98 B-2  
 M-1K78(4) B-2  
 IR-670-6(53)98 B-3

12A  
14



FUNDS	
NAME	REVISION
	DATE

For Tabulation of areas see sheet 12/14  
**CHESAPEAKE AND OHIO RAILROAD PLAT**

CITY OF COLUMBUS, FRANKLIN COUNTY, ORIGINAL MARION TOWNSHIP, T 5N, R 22W

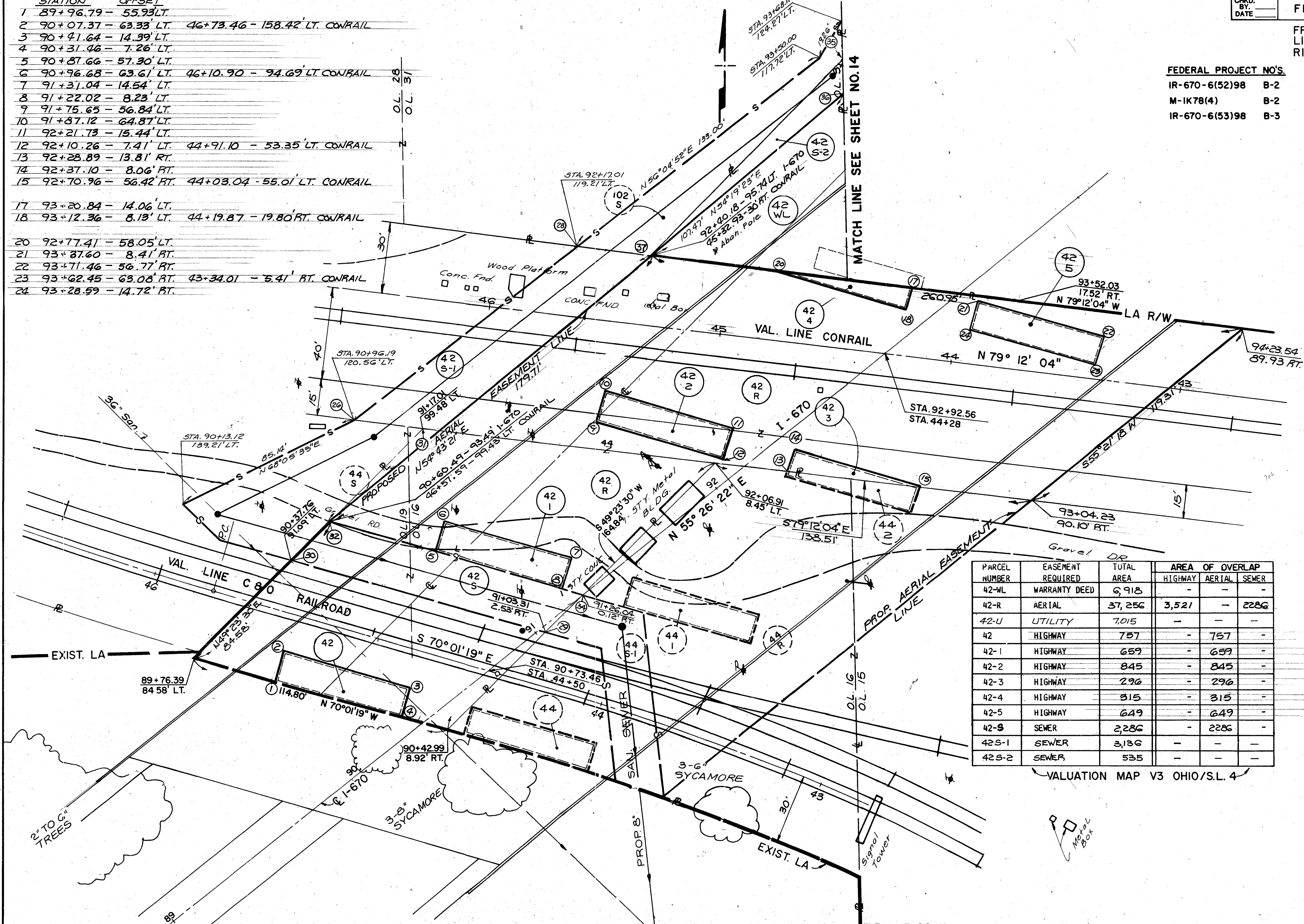
CALC. BY. DATE  
 CHKD. BY. DATE  
 FRA-670-1.25,(B-2 & B-3)  
 OHIO REGION 5

FRANKLIN COUNTY LIMITED ACCESS RIGHT OF WAY PLANS

13  
14

FEDERAL PROJECT NO'S  
 IR-670-6(52)98 B-2  
 M-1K78(4) B-2  
 IR-670-6(53)98 B-3

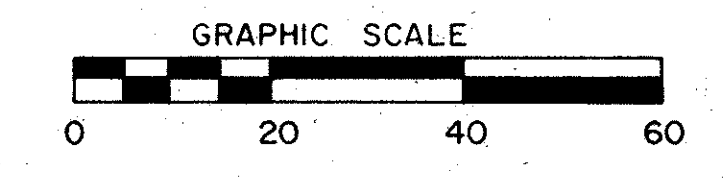
STATION	OFFSET
1	89+96.79 - 55.93' LT.
2	90+07.37 - 63.33' LT. 46+73.46 - 158.42' LT. CONRAIL
3	90+41.64 - 14.39' LT.
4	90+31.46 - 7.26' LT.
5	90+87.66 - 57.30' LT.
6	90+96.68 - 63.61' LT. 46+10.90 - 94.69' LT. CONRAIL
7	91+37.04 - 14.54' LT.
8	91+22.02 - 8.23' LT.
9	91+75.65 - 56.84' LT.
10	91+87.12 - 64.87' LT.
11	92+21.73 - 15.44' LT.
12	92+10.26 - 7.41' LT. 44+91.10 - 53.35' LT. CONRAIL
13	92+28.89 - 13.81' RT.
14	92+37.10 - 8.06' RT.
15	92+70.96 - 56.42' RT. 44+03.04 - 55.01' LT. CONRAIL
17	93+20.84 - 14.06' LT.
18	93+12.36 - 8.13' LT. 44+19.87 - 19.80' RT. CONRAIL
20	92+77.41 - 58.05' LT.
21	93+87.60 - 8.41' RT.
22	93+71.46 - 56.77' RT.
23	93+62.45 - 63.08' RT. 43+34.01 - 5.41' RT. CONRAIL
24	93+28.59 - 14.72' RT.



PCL	COURSE	DISTANCE	BEARING
42	1-2	12.91'	N 20° 26' 22" E
	2-3	59.75'	S 69° 33' 38" E
	3-4	12.43'	S 20° 26' 22" W
	4-1	59.75'	N 70° 01' 19" W
42-1	5-6	11.00'	N 20° 26' 22" E
	6-7	59.91'	S 69° 33' 38" E
	7-8	11.00'	S 20° 26' 22" W
42-S	8-5	59.91'	N 69° 33' 38" W
	29-30	114.28'	N 69° 33' 38" W
	30-32	22.86'	N 49° 23' 30" E
	32-34	114.28'	N 69° 33' 38" W
42-S-1	34-29	22.86'	N 49° 23' 30" E
	28-37	32.98'	S 79° 12' 04" E
	37-32	179.71'	S 54° 43' 21" W
	32-31	56.84'	S 3° 11' 56" W
42-S-1	31-26	29.63'	N 79° 12' 04" W
	26-28	120.82'	N 56° 04' 52" E
	32-34	122.53'	N 70° 01' 19" E
	34-29	22.96'	S 49° 23' 30" W
42-2	9-10	14.00'	N 20° 26' 22" E
	10-11	60.34'	S 69° 33' 38" E
	11-12	14.00'	S 20° 26' 22" W
42-3	12-9	60.34'	N 67° 33' 38" W
	13-14	10.03'	N 20° 26' 22" E
	14-15	59.03'	S 69° 33' 38" E
42-4	15-13	59.88'	N 79° 12' 04" W
	20-17	61.82'	S 79° 12' 04" E
	17-18	10.35'	S 20° 26' 22" W
42-5	18-20	60.94'	N 69° 33' 38" W
	21-22	59.03'	S 69° 33' 38" E
42-S-R	22-23	11.00'	S 20° 26' 22" W
	23-24	59.03'	N 69° 33' 38" W
42-S-R	24-21	11.00'	N 20° 26' 22" E
	37-35	115.93'	N 49° 23' 30" E
	35-36	12.80'	S 3° 11' 56" W
36-37	107.47'	S 54° 19' 23"	

PARCEL NUMBER	EASEMENT REQUIRED	TOTAL AREA	AREA OF OVERLAP		
			HIGHWAY	AERIAL	SEWER
42-WL	WARRANTY DEED	6,913	-	-	-
42-R	AERIAL	37,256	3,521	-	2286
42-U	UTILITY	7,015	-	-	-
42	HIGHWAY	757	-	757	-
42-1	HIGHWAY	659	-	659	-
42-2	HIGHWAY	845	-	845	-
42-3	HIGHWAY	296	-	296	-
42-4	HIGHWAY	315	-	315	-
42-5	HIGHWAY	649	-	649	-
42-S	SEWER	2,286	-	-	2,286
42S-1	SEWER	2,136	-	-	-
42S-2	SEWER	535	-	-	-

VALUATION MAP V3 OHIO/S.L. 4



CITY OF COLUMBUS, FRANKLIN COUNTY, ORIGINAL MARION TOWNSHIP, T 5N, R 22W

CONSOLIDATED RAIL CORP. PLAT

FUNDS	NAME	REVISION	DATE

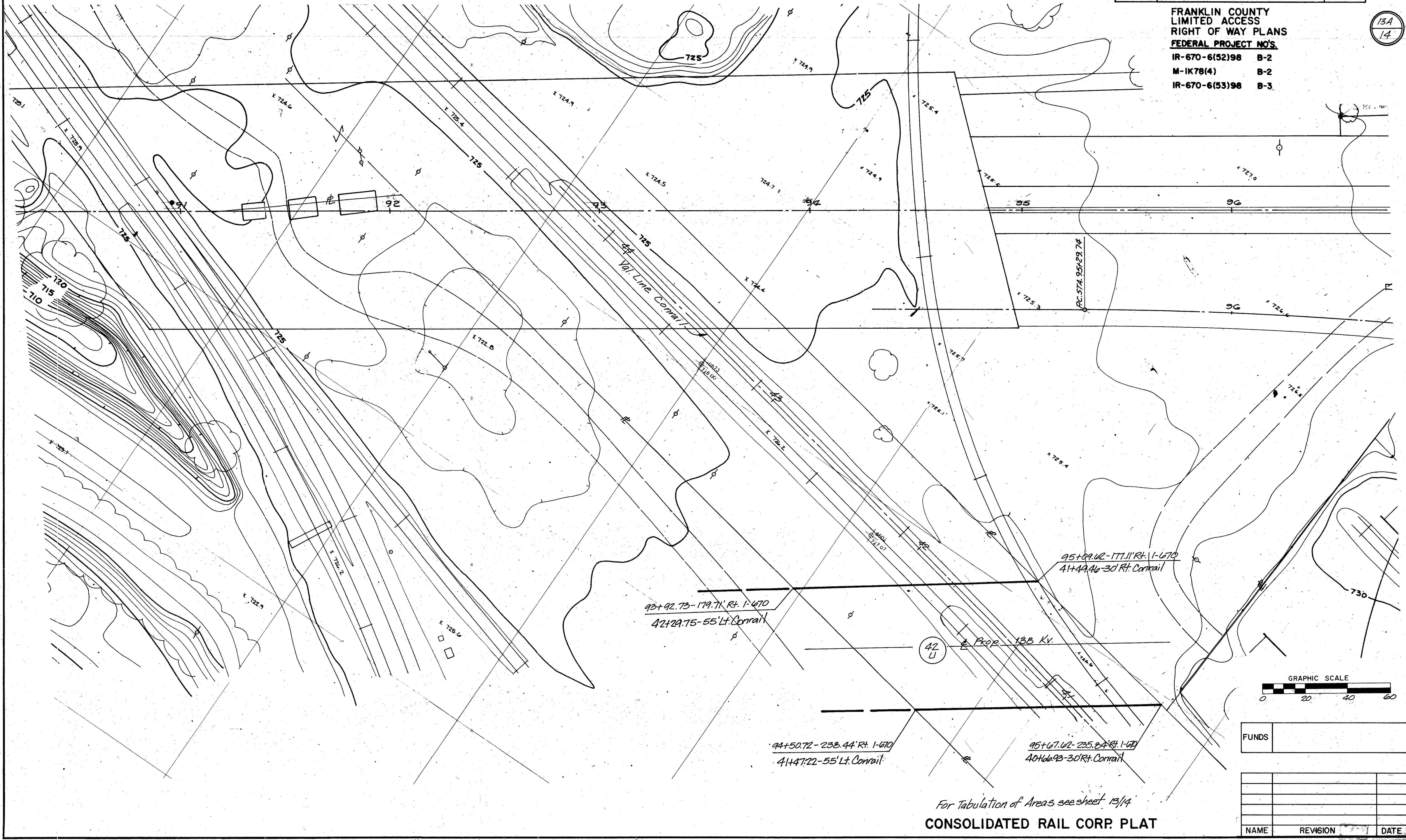
CITY OF COLUMBUS, FRANKLIN COUNTY,  
ORIGINAL MARION TOWNSHIP, T 5 N, R 22 W

CALC. BY.	OHIO
DATE	F.H.W.A. REGION 5
CHKD. BY.	
DATE	

FRA-670-1.25,(B-2&B-3)

FRANKLIN COUNTY  
LIMITED ACCESS  
RIGHT OF WAY PLANS  
FEDERAL PROJECT NO'S  
IR-670-6(52)98 B-2  
M-1K78(4) B-2  
IR-670-6(53)98 B-3

13A  
14



For Tabulation of Areas see sheet 13/14  
**CONSOLIDATED RAIL CORP. PLAT**

FUNDS	
NAME	REVISION
	DATE



CITY OF COLUMBUS, FRANKLIN COUNTY,  
ORIGINAL MARION TOWNSHIP, T 5 N, R 22 W

PARCEL NUMBER	EASEMENT REQUIRED	TOTAL AREA
107-WU	AERIAL	3551
42-R-1	AERIAL	459
106-WU	AERIAL	112

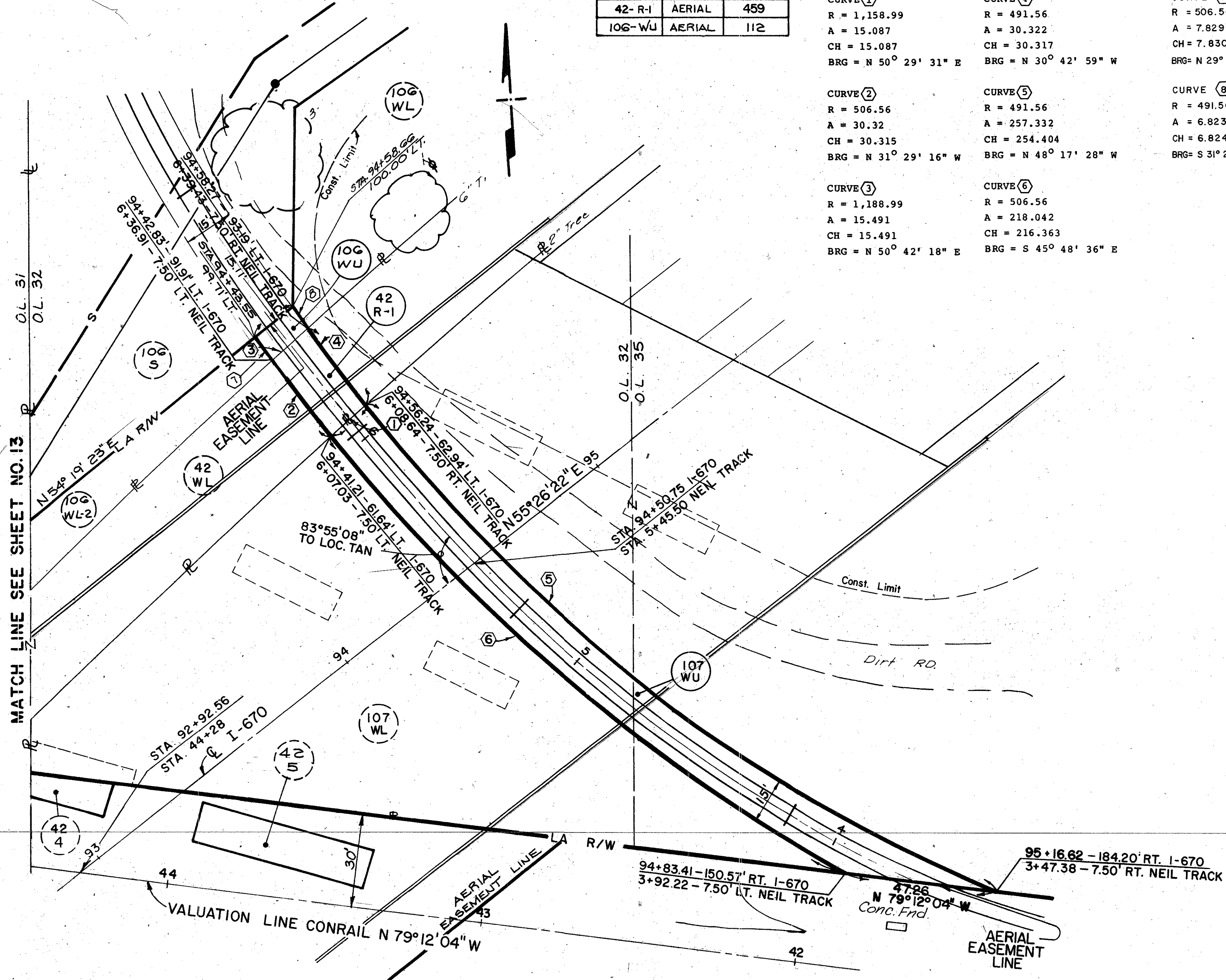
<b>CURVE ①</b> R = 1,158.99 A = 15.087 CH = 15.087 BRG = N 50° 29' 31" E	<b>CURVE ④</b> R = 491.56 A = 30.322 CH = 30.317 BRG = N 30° 42' 59" W	<b>CURVE ⑦</b> R = 506.56 A = 7.829 CH = 7.830 BRG = N 29° 19' 33" W
<b>CURVE ②</b> R = 506.56 A = 30.32 CH = 30.315 BRG = N 31° 29' 16" W	<b>CURVE ⑤</b> R = 491.56 A = 257.332 CH = 254.404 BRG = N 48° 17' 28" W	<b>CURVE ⑧</b> R = 491.56 A = 6.823 CH = 6.824 BRG = S 31° 20' 22" E
<b>CURVE ③</b> R = 1,188.99 A = 15.491 CH = 15.491 BRG = N 50° 42' 18" E	<b>CURVE ⑥</b> R = 506.56 A = 218.042 CH = 216.363 BRG = S 45° 48' 36" E	

CALC. BY. _____	OHIO
DATE _____	F.H.W.A. REGION 5
CHKD. BY. _____	
DATE _____	

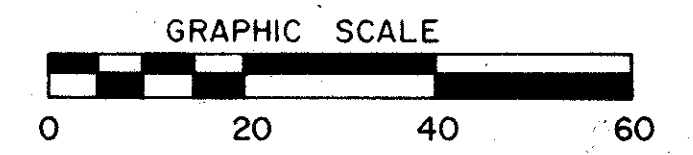
FRA-670-1.25, (B-2 & B-3)

FRANKLIN COUNTY  
LIMITED ACCESS  
RIGHT OF WAY PLANS

FEDERAL PROJECT NO'S  
IR-670-6(52)98 B-2  
M-1K78(4) B-2  
IR-670-6(53)98 B-3



MATCH LINE SEE SHEET NO.13



FUNDS	
-------	--

VALUATION MAP V.3 OHIO/S.L.4 & S.L.4.I

CITY OF COLUMBUS, FRANKLIN COUNTY,  
ORIGINAL MARION TOWNSHIP, T 5 N, R 22 W

(NEIL TRACK)  
CONSOLIDATED RAIL CORP. PLAT

NAME	REVISION	DATE