

NEW

FRANKLIN COUNTY	OHIO
FRA-670-3.93 RR	FHWA REGION 5
	FEDERAL PROJECT

STATE OF OHIO
DEPARTMENT OF TRANSPORTATION

FRA-670-3.93 RR

CITY OF COLUMBUS
FRANKLIN COUNTY
ACQUISITION PLAN
FOR

NORFOLK AND WESTERN RAILWAY CORPORATION

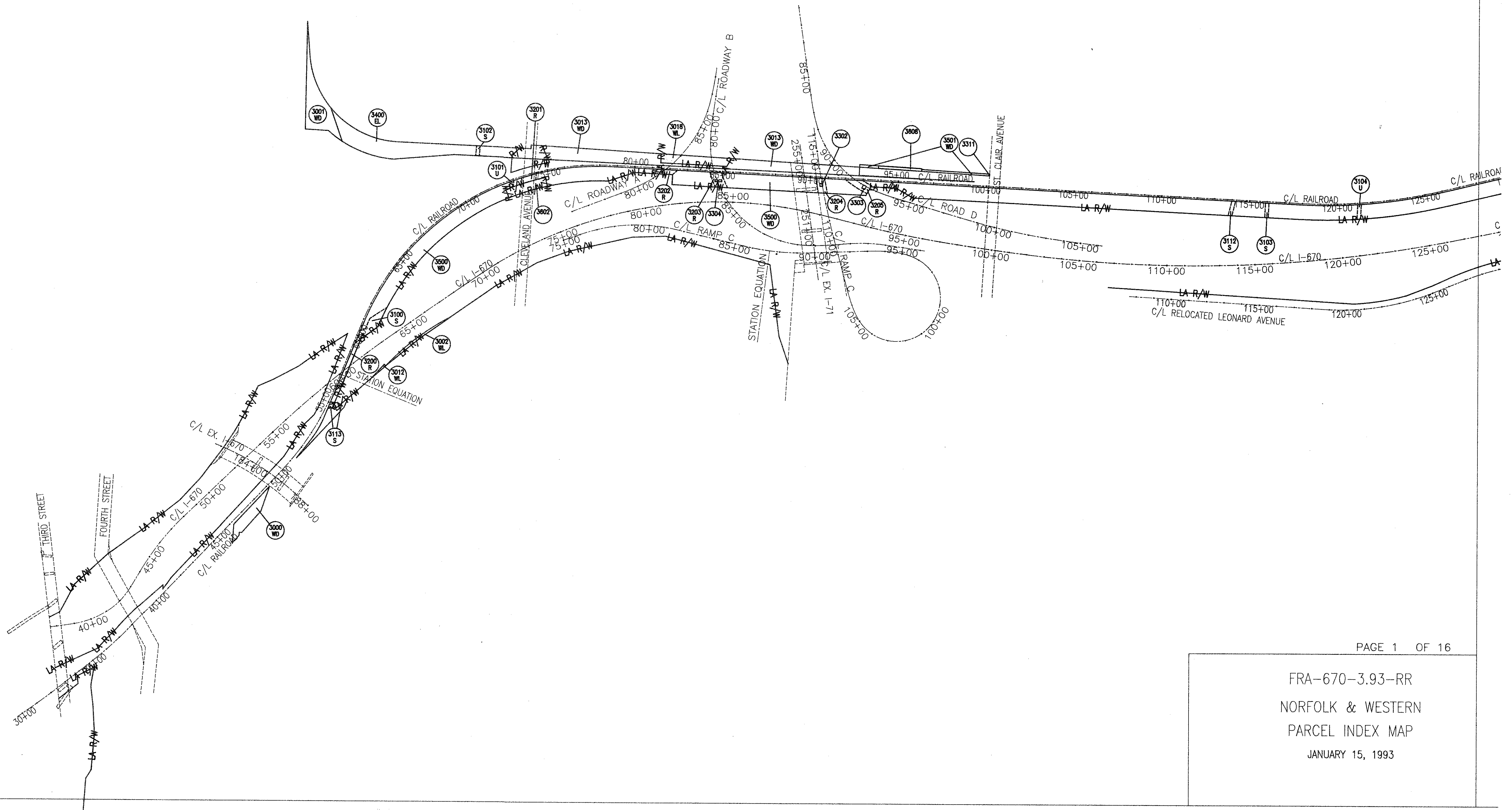
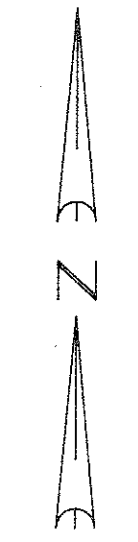
RECEIVED
66 1 4 1955
PRODUCTION

INDEX OF SHEETS

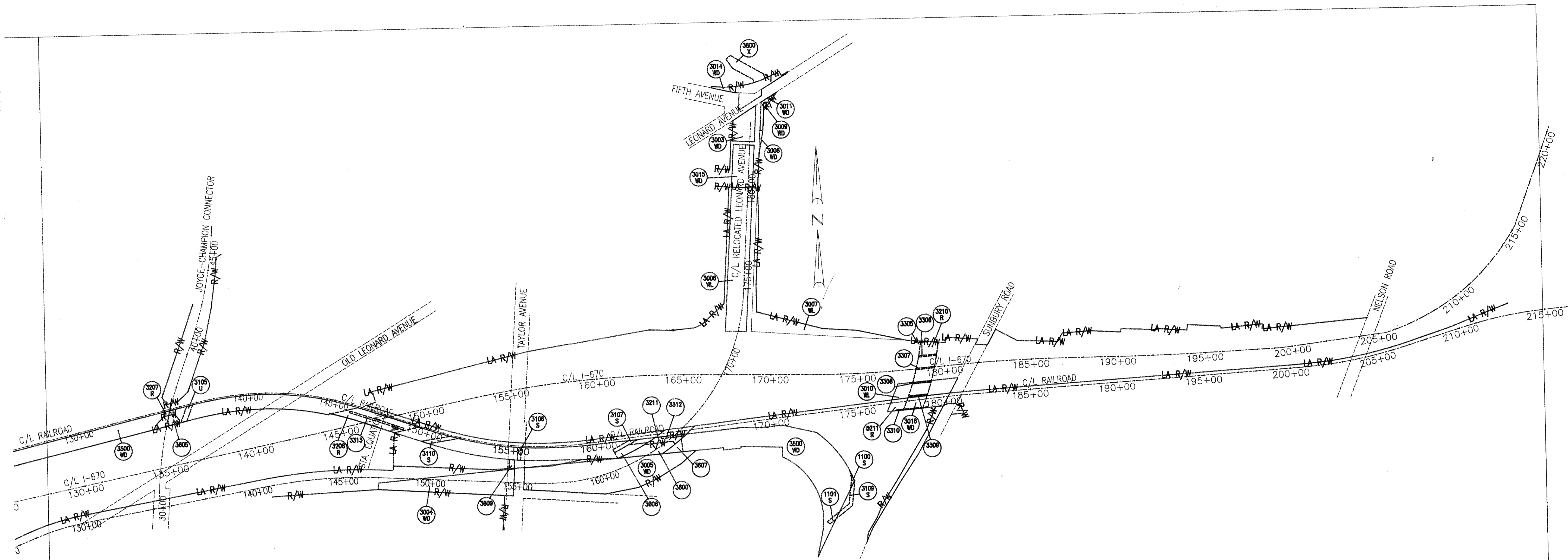
TITLE SHEET	1-2
PARCEL INDEX MAP	3-8
EXISTING OWNERSHIP PLAN SHEETS	9
SUMMARY OF ADDITIONAL RIGHT-OF-WAY	9
OVERLAP TABLE	10-15
PROPOSED OWNERSHIP PLAN SHEETS	16
PROPOSED OWNERSHIP SUMMARY	

Plan Prepared By:
STICKLEN-BELSHEIM & ASSOCIATES
COLUMBUS, OHIO
UNDER THE DIRECTION OF:
Walter M. McE...
PROFESSIONAL SURVEYOR 5679 OHIO

SEAL



FRA-670-3.93-RR
NORFOLK & WESTERN
PARCEL INDEX MAP
JANUARY 15, 1993

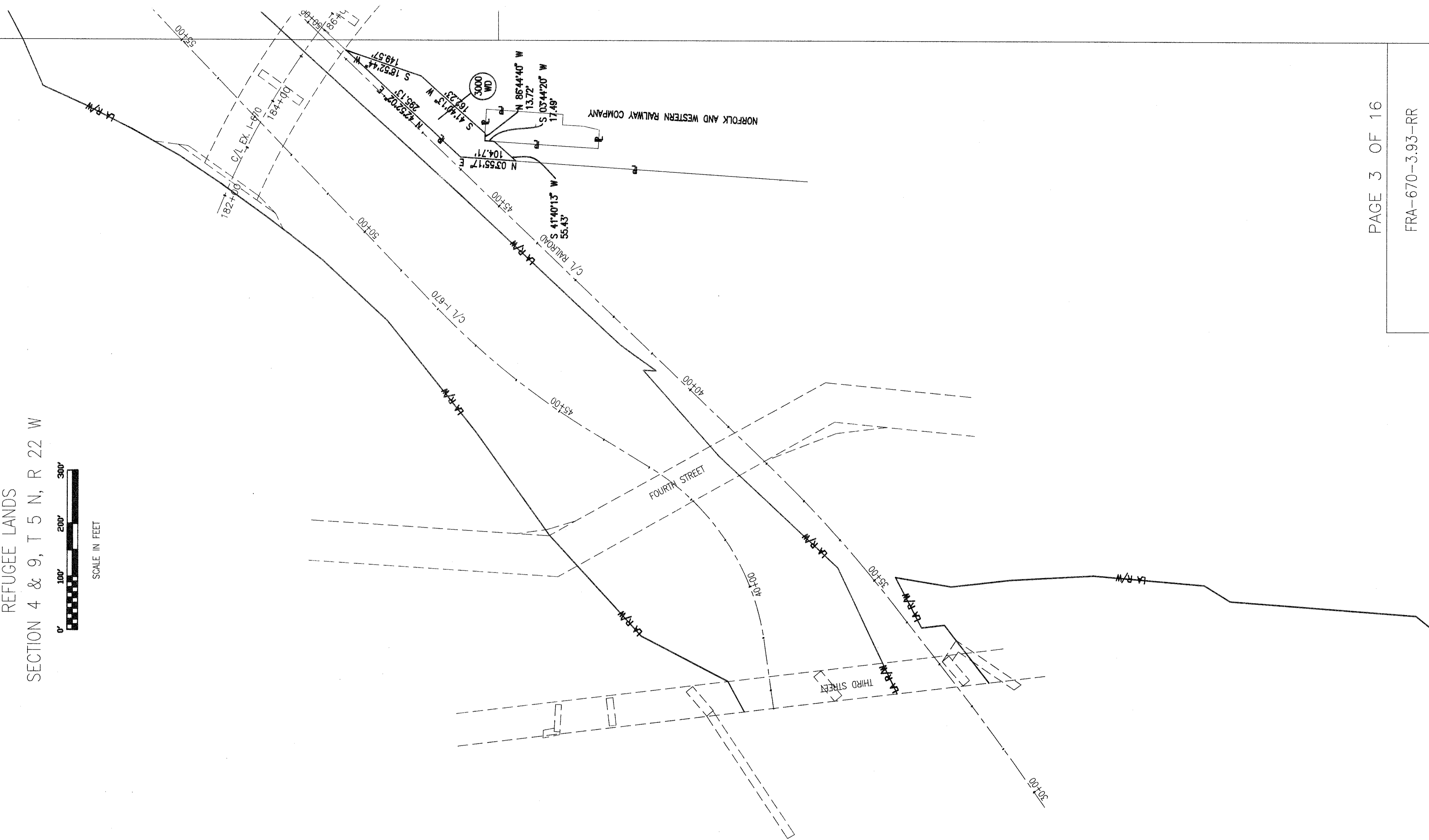


FRA-670-3.93-RR
 NORFOLK & WESTERN
 PARCEL INDEX MAP
 JANUARY 15, 1993

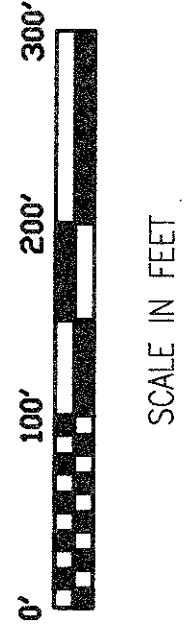
FRANKLIN COUNTY
REFUGEE LANDS
SECTION 4 & 9, T 5 N, R 22 W



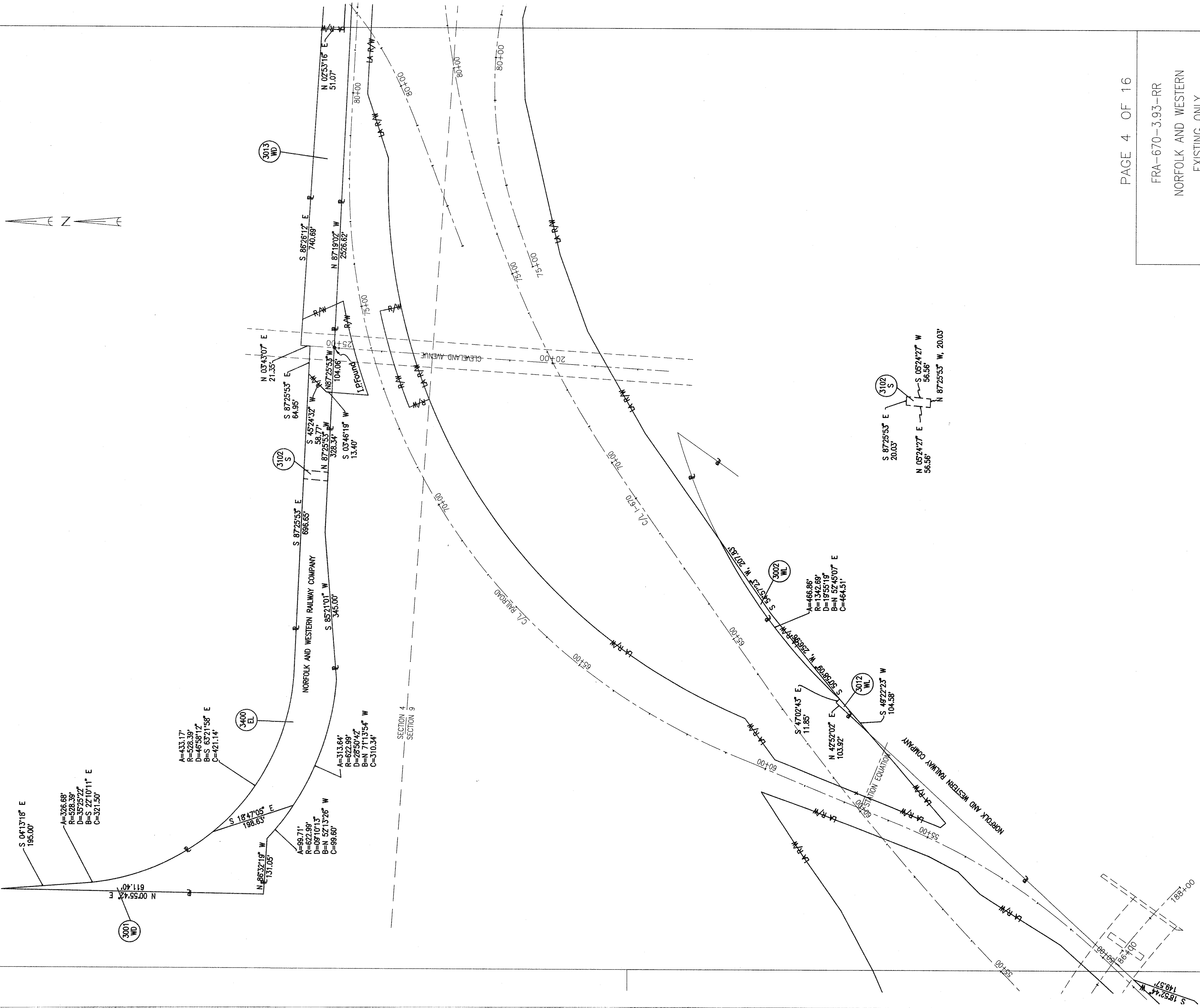
SCALE IN FEET



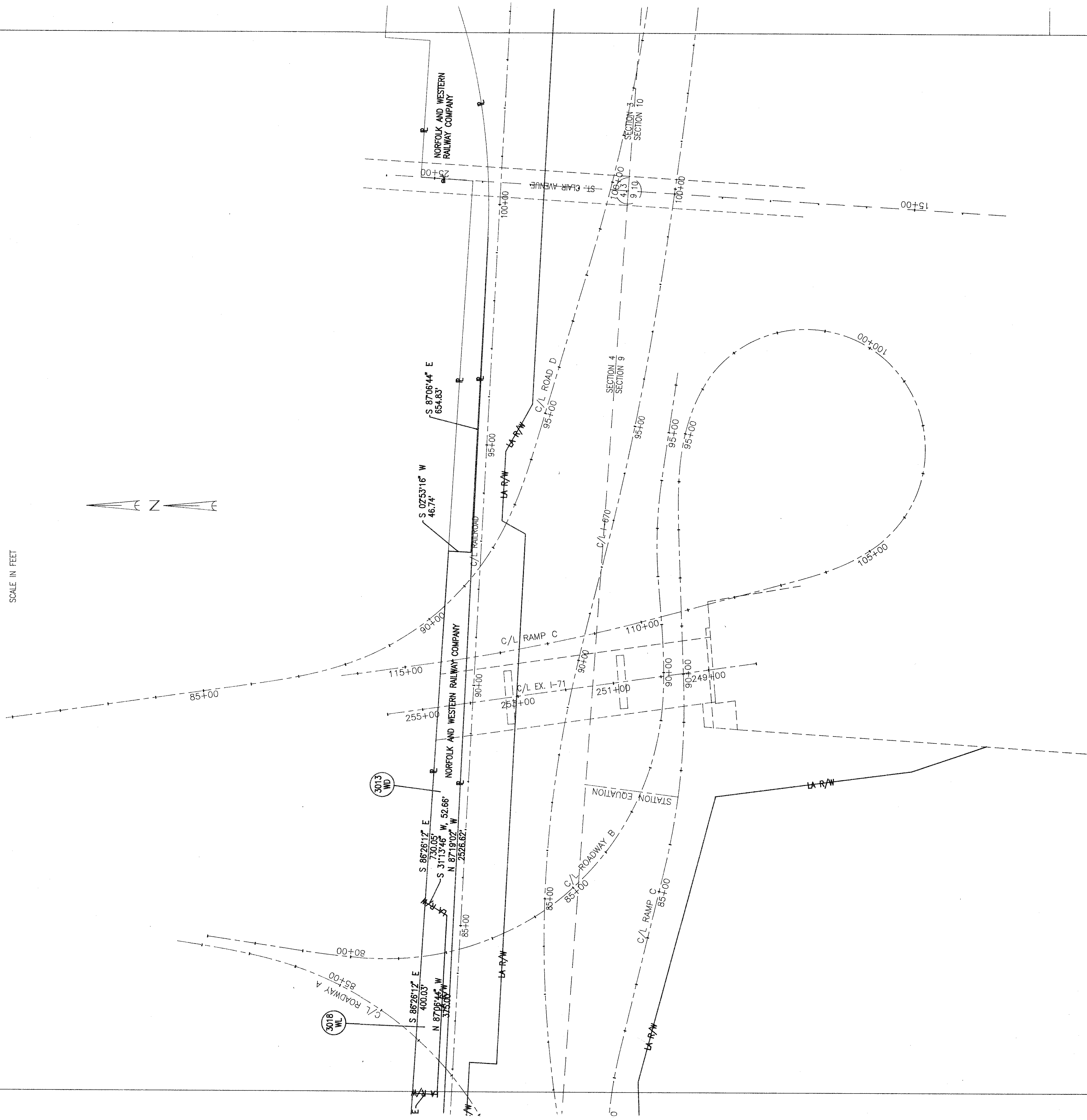
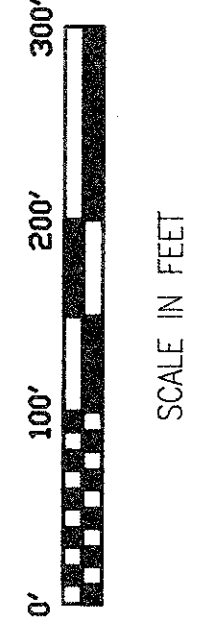
FRANKLIN COUNTY
REFUGEE LANDS
SECTIONS 4 & 9, T 5 N, R 22 W



SCALE IN FEET



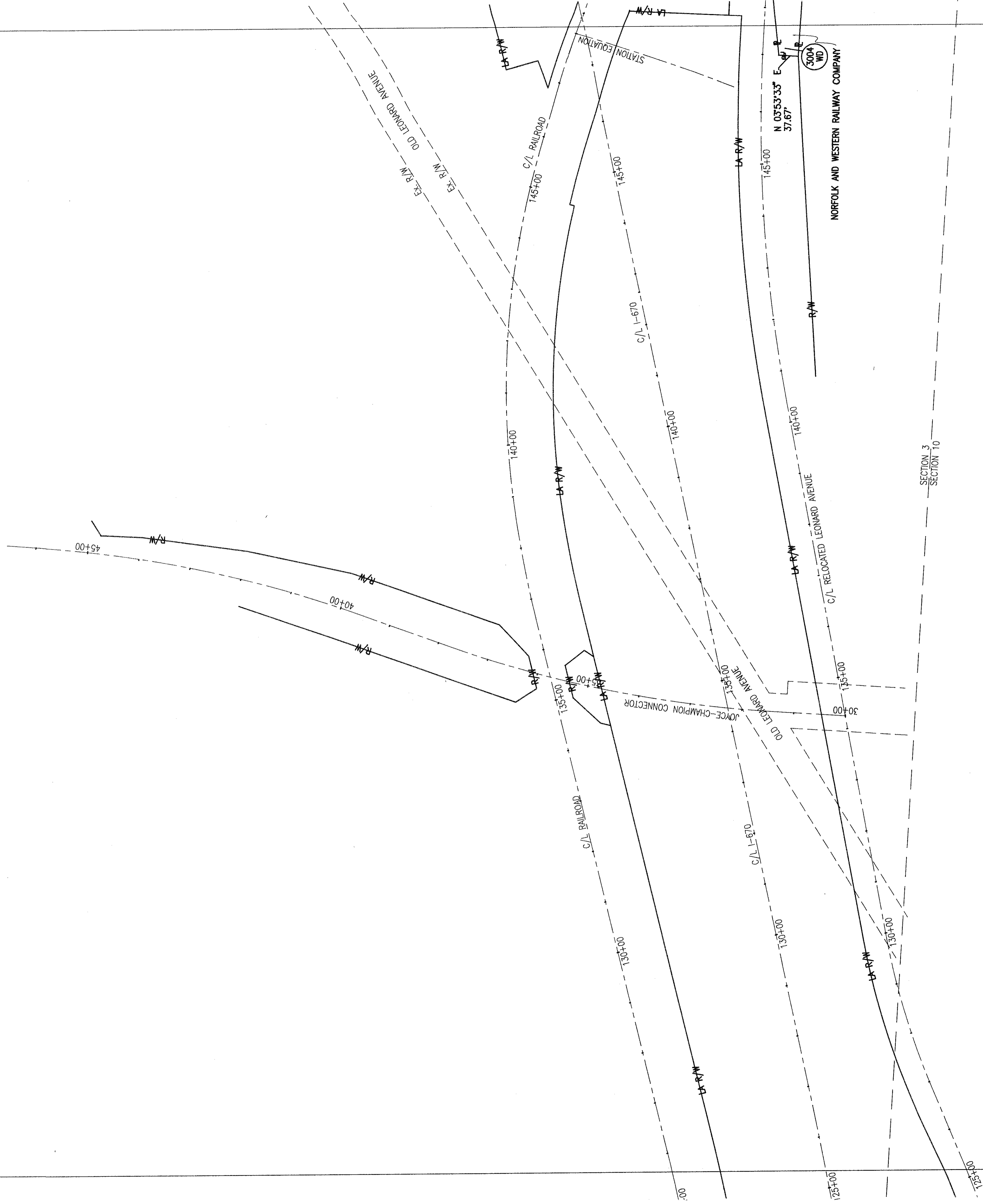
FRANKLIN COUNTY
 REFUGEE LANDS
 SECTIONS 3, 4, 9 & 10, T 5 N, R 22 W



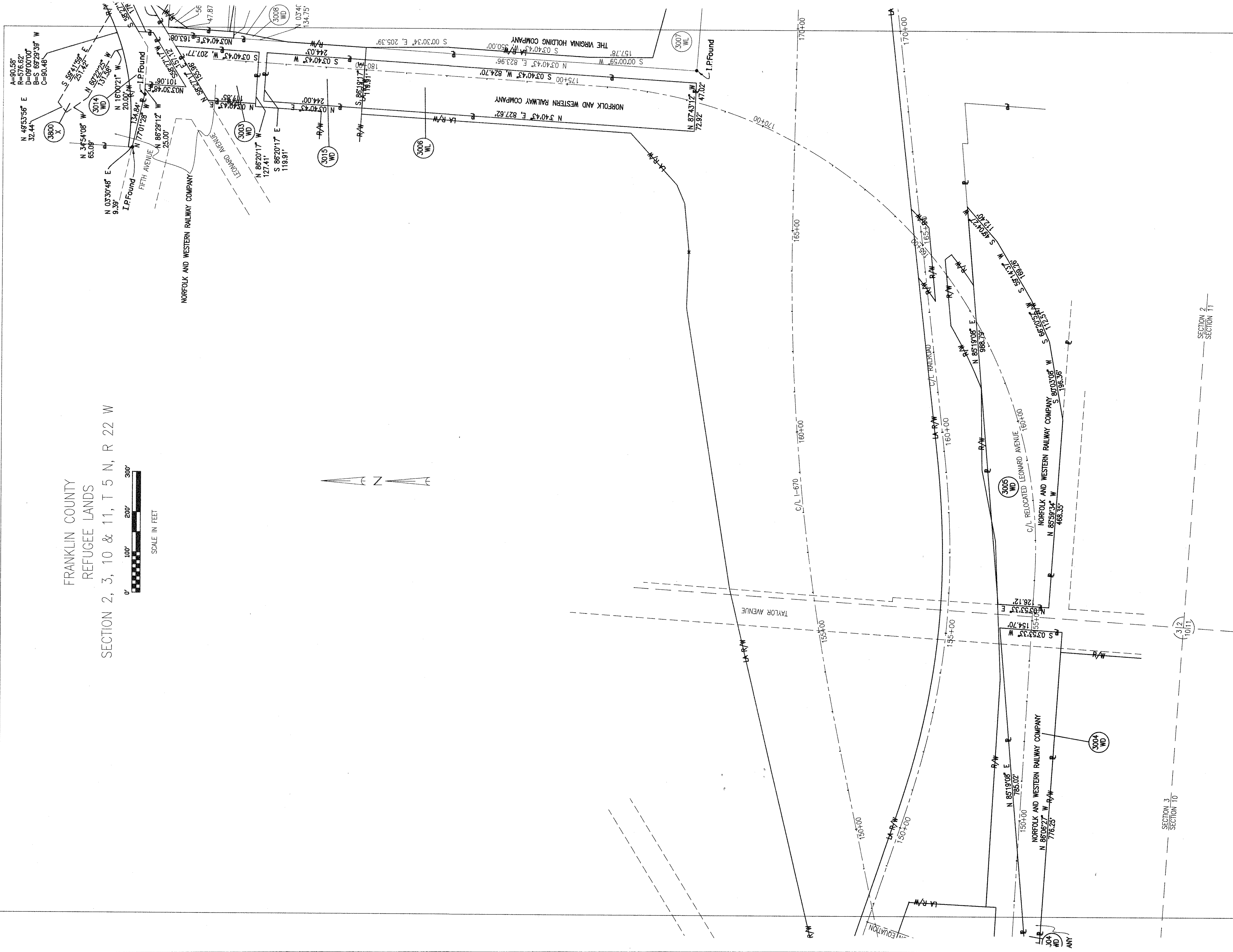
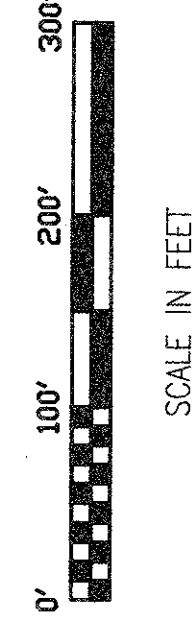
FRANKLIN COUNTY
REFUGEE LANDS
SECTIONS 3 & 10, T 5 N, R 22 W



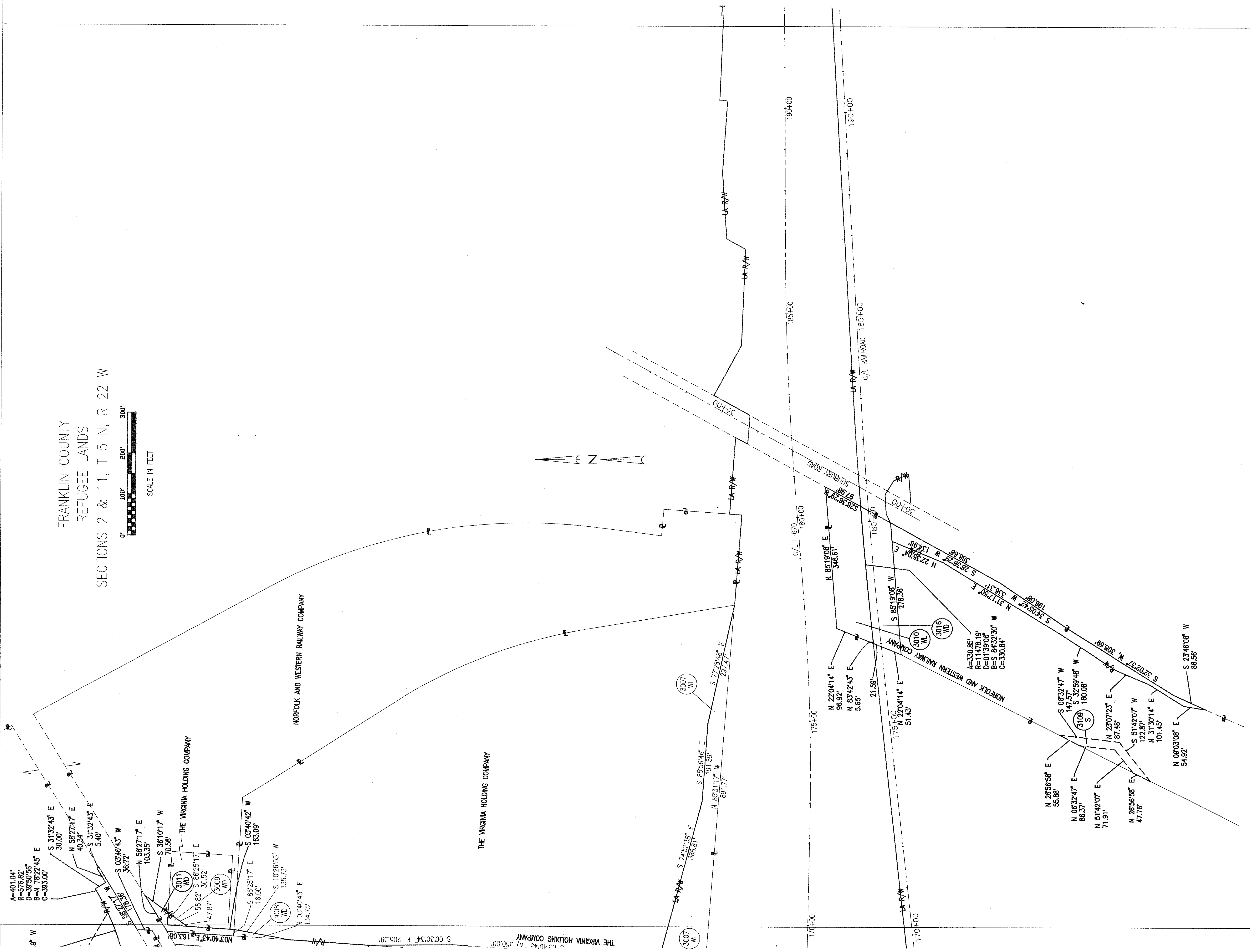
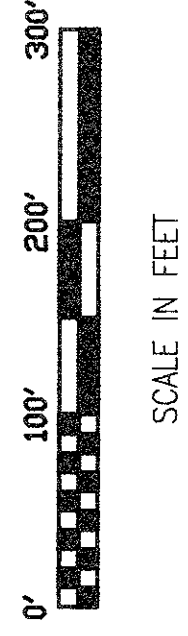
SCALE IN FEET



FRANKLIN COUNTY
REFUGEE LANDS
SECTION 2, 3, 10 & 11, T 5 N, R 22 W



FRANKLIN COUNTY
REFUGEE LANDS
SECTIONS 2 & 11, T 5 N, R 22 W



SUMMARY OF ADDITIONAL RIGHT OF WAY

CALC. BY: VDK DATE: 4/88	FRA-670-3.93-RR	OHIO
CHKD. BY: DATE:		FHWA REGION 5

TOTAL NUMBER OF _____
 OWNERS _____
 TOTAL TAKES _____
 OWNERS WITH STRUCTURES INVOLVED _____
 OWNERSHIPS WITH "P" ITEMS _____

STATE JOB NO. _____

PARCEL	OWNER	AUDITORS PARCEL NO.	SHEET NO.	OWNERS RECORD		RECORD AREA	TOTAL P.R.O.	GROSS TAKE	P.R.O. IN TAKE	NET TAKE	STRUC- TURE	NET RESIDUE		TYPE FUND	REMARKS AND PERSONALTY	FINAL OWNER	AS ACQUIRED	
				BOOK	PAGE							LEFT	RIGHT				BOOK	PAGE
3000 WD	NORFOLK AND WESTERN RAILWAY COMPANY		3	914	155			0.380 AC.	0.000 AC.	0.380 AC.						STATE OF OHIO		
3001 WD		66212	4	242	474			0.983 AC.	0.000 AC.	0.983 AC.						STATE OF OHIO		
3002 WL		66212	4	238	156			0.102 AC.	0.000 AC.	0.102 AC.						STATE OF OHIO		
3003 WD			7	217	338			0.476 AC.	0.000 AC.	0.476 AC.						CITY OF COLUMBUS		
3004 WD			6,7	217	344			1.714 AC.	0.139 AC.	1.575 AC.						CITY OF COLUMBUS		
3005 WD			7	558	397			3.331 AC.	0.000 AC.	3.331 AC.						CITY OF COLUMBUS		
3006 WL			7	142	211	1.831 AC.	0.256 AC.	2.274 AC.	0.000 AC.	2.274 AC.						STATE OF OHIO		
3010 WL			8	142	217			0.651 AC.	0.000 AC.	0.651 AC.						STATE OF OHIO		
3011 WD			8	343	257	4.234 AC.		0.092 AC.	0.000 AC.	0.092 AC.						CITY OF COLUMBUS		
3012 WL			4	355	494			0.014 AC.	0.000 AC.	0.014 AC.						STATE OF OHIO		
3013 WD			4,5	355	491-492			2.426 AC.	0.262 AC.	2.164 AC.						STATE OF OHIO		
3014 WD			7	363	38-40	0.334 AC.		0.535 AC.	0.176 AC.	0.359 AC.						CITY OF COLUMBUS		
3015 WD			7	353	424			0.672 AC.	0.000 AC.	0.672 AC.						CITY OF COLUMBUS		
3016 WD			8	374	78			0.971 AC.	0.000 AC.	0.971 AC.						STATE OF OHIO		
3018 WL			5	174	5			0.434 AC.	0.000 AC.	0.434 AC.						STATE OF OHIO		
3102 S			4	ORDINANCE	714-41			0.026 AC.	0.000 AC.	0.026 AC.					SANITARY SEWER EASEMENT	CITY OF COLUMBUS		
3109 S			8	TOTAL	PARCEL B	8.568 AC.	0.256 AC.	0.097 AC.	0.000 AC.	0.097 AC.					STORM SEWER EASEMENT	CITY OF COLUMBUS		
3400 EL			4	914	155 (17)	1.690 AC.	0.553 AC.	1.882 AC.	0.000 AC.	1.882 AC.						STATE OF OHIO		
3800 X			7	914	155 (10-16)	4.590 AC.	0.162 AC.	0.298 AC.	0.000 AC.	0.298 AC.					CHANNEL EASEMENT	CITY OF COLUMBUS		
		66222		243	225	0.181 AC.												
				558	397	11.433 AC.												
3007 WL	THE VIRGINIA HOLDING COMPANY	12168	7,8	715	511			1.279 AC.	0.000 AC.	1.279 AC.						STATE OF OHIO		
3008 WD			7,8					0.025 AC.	0.000 AC.	0.025 AC.						CITY OF COLUMBUS		
3009 WD			8					0.017 AC.	0.000 AC.	0.017 AC.						CITY OF COLUMBUS		

AREA OF OVERLAP

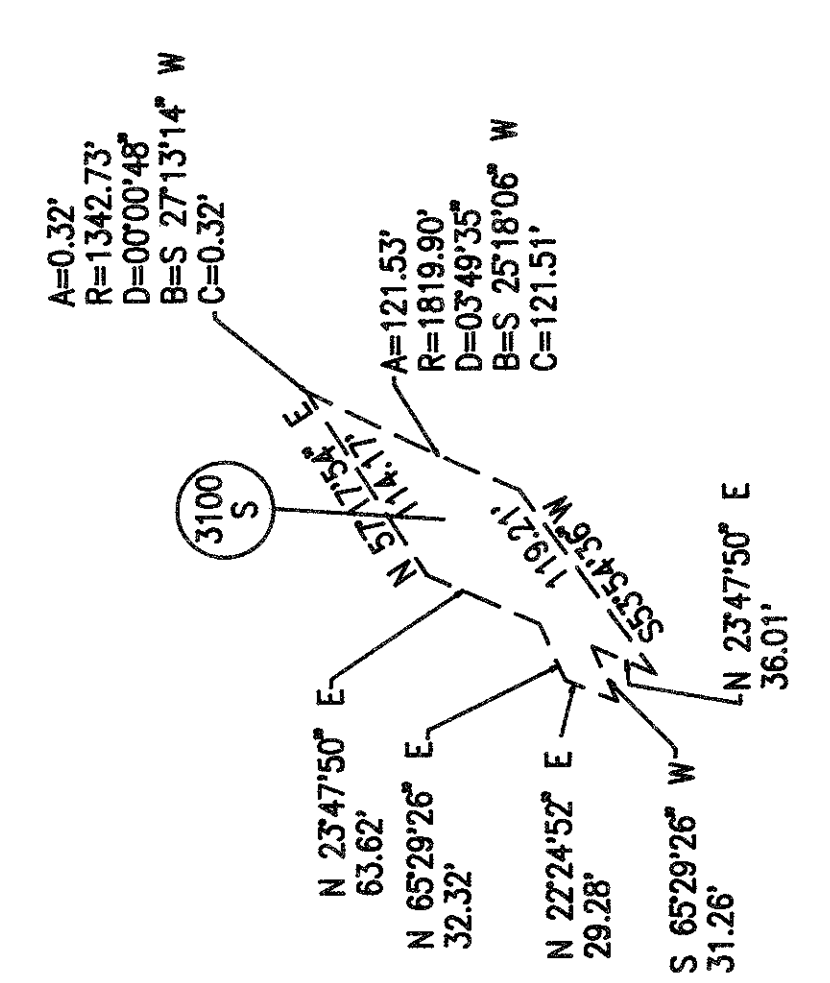
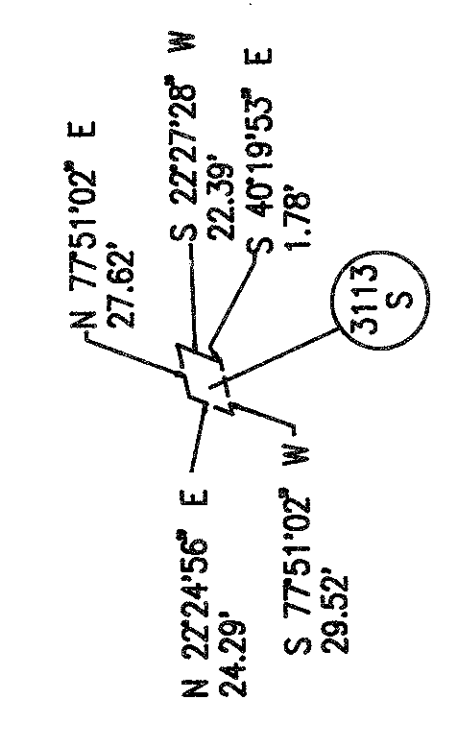
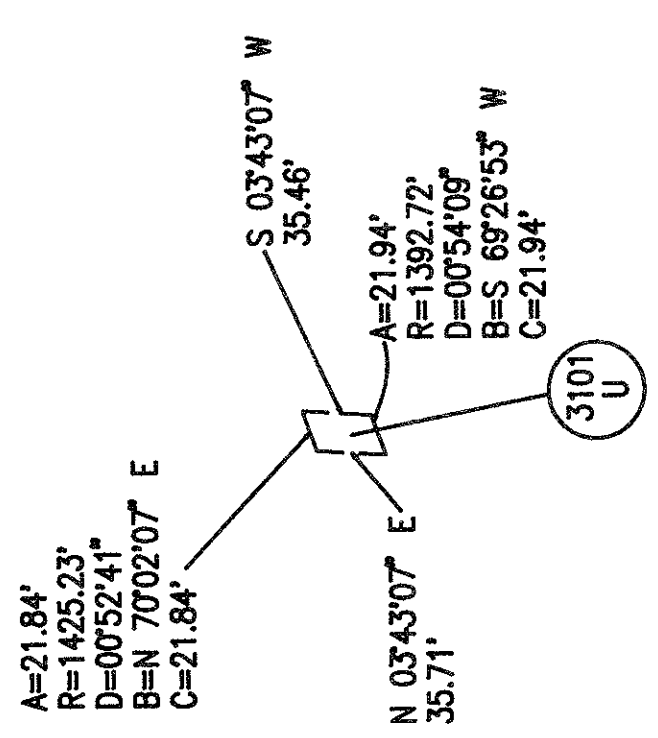
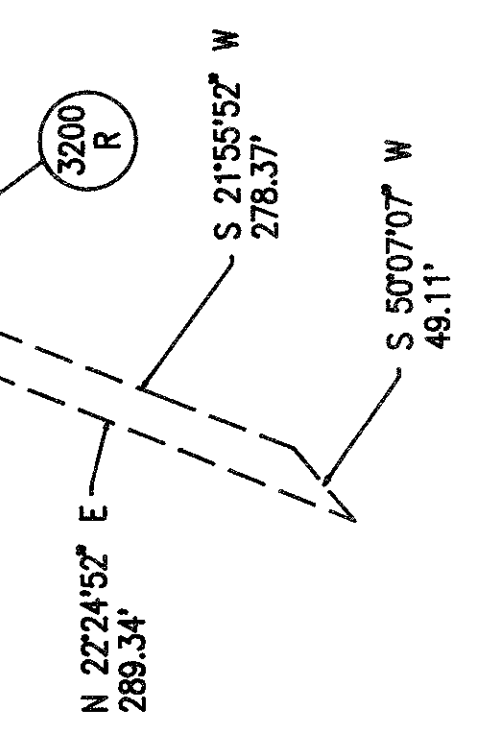
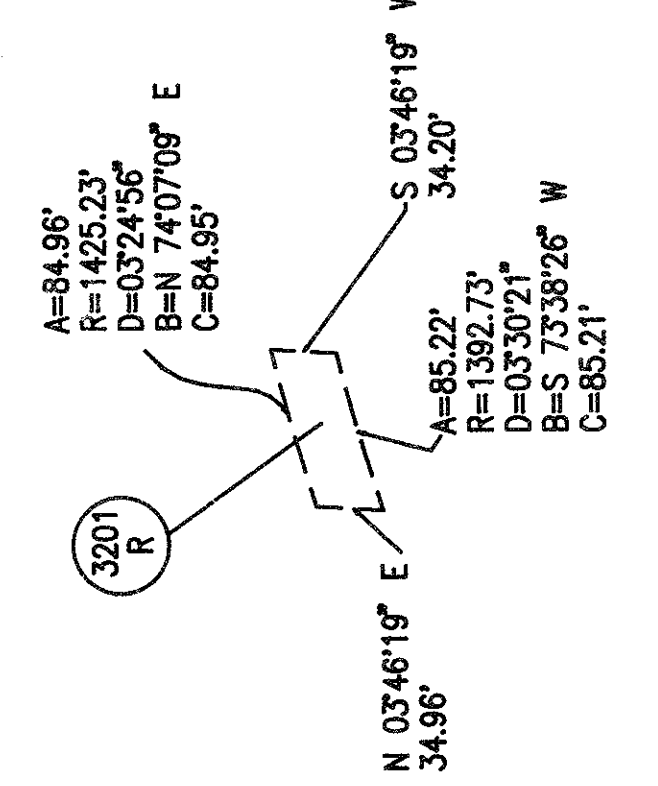
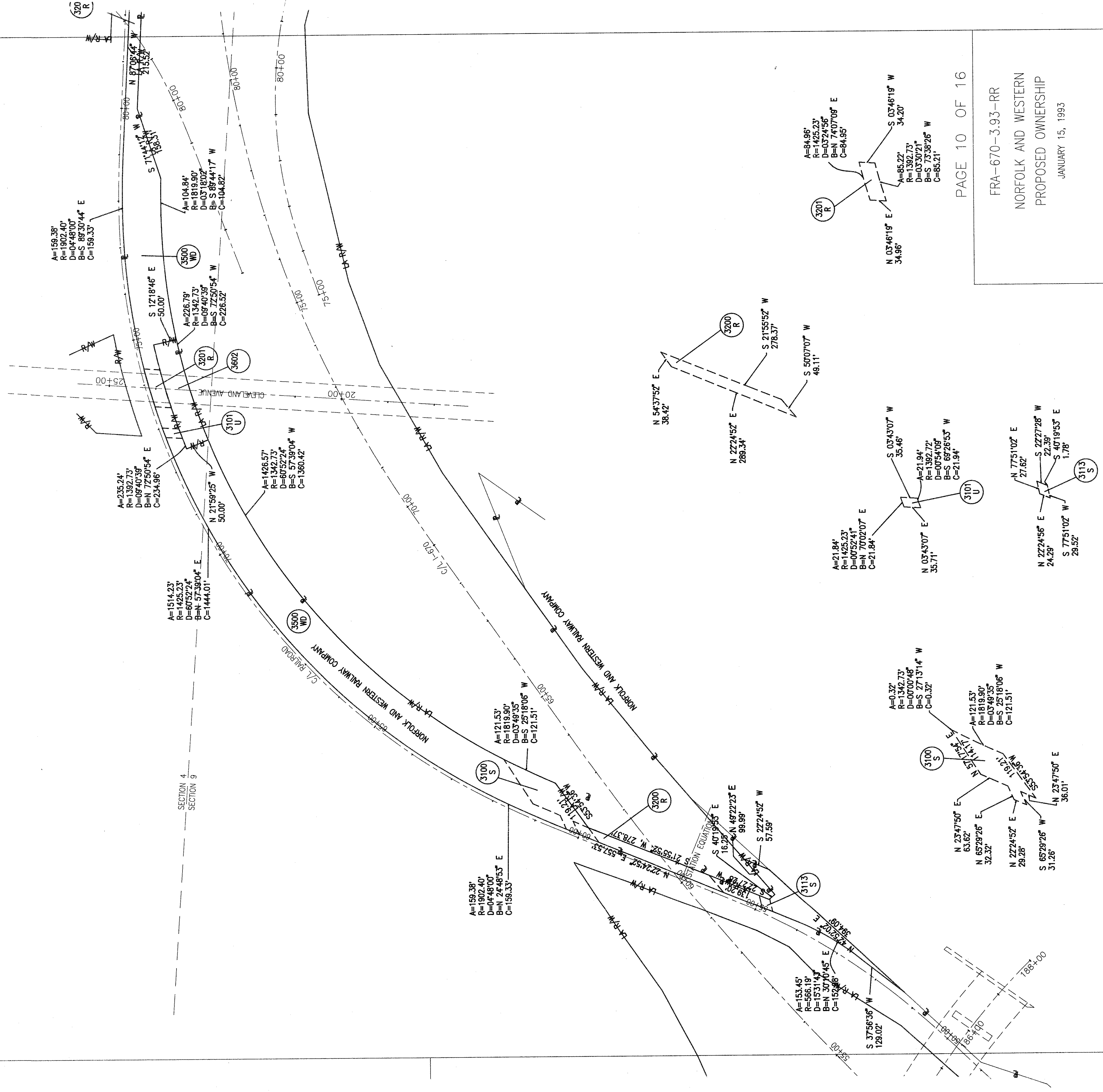
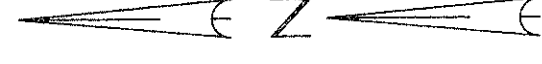
PARCEL NUMBER	PARCEL AREA	EXISTING P.R.O.		
		AERIAL	PIER	HIGHWAY
3004WD	1.714 AC.			0.139 AC.
3013WD	2.426 AC.	0.170 AC.		0.092 AC.
3014WD	0.535 AC.			0.176 AC.

DATE	REVISION	BY	
COMPLETION DATE	1-15-93		

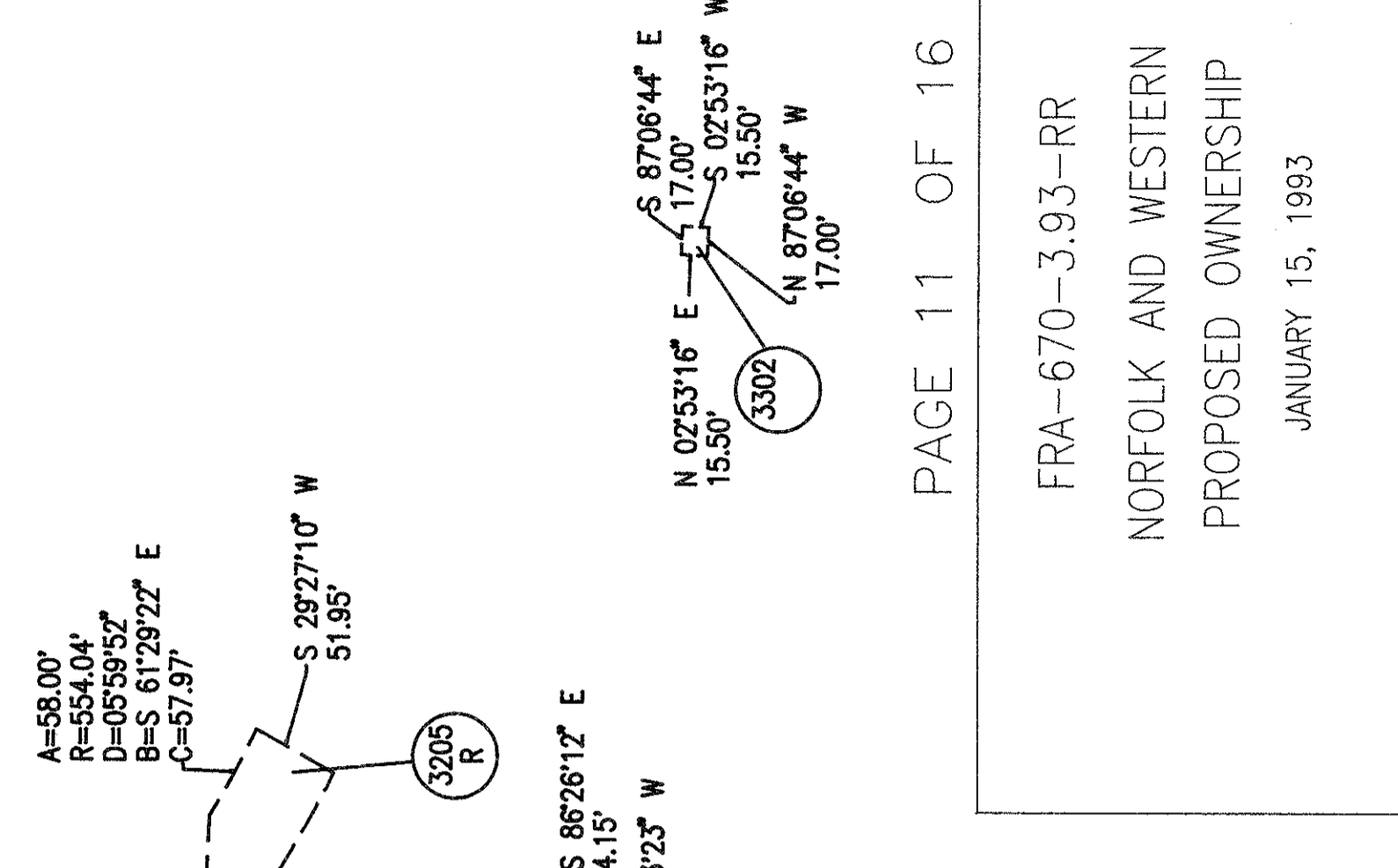
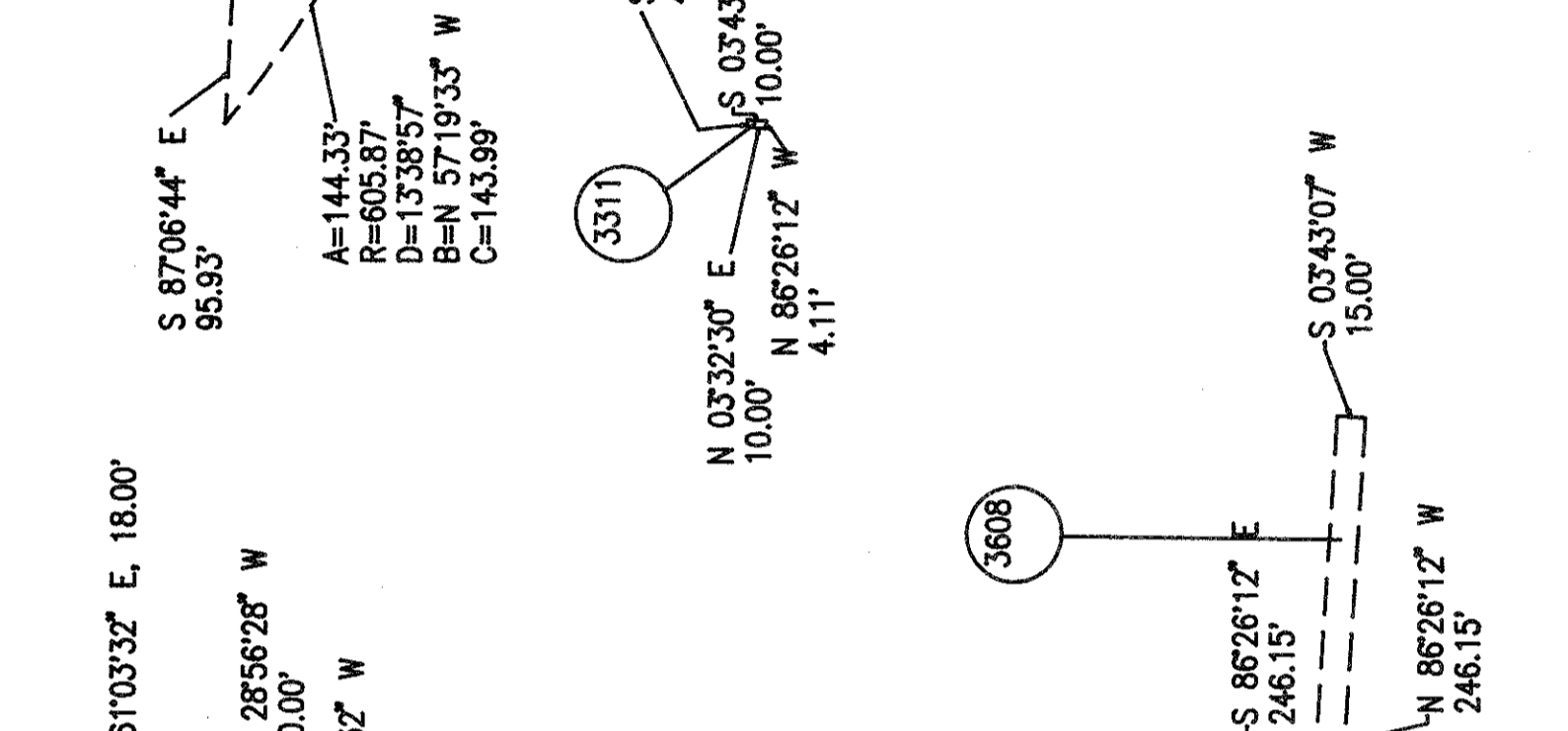
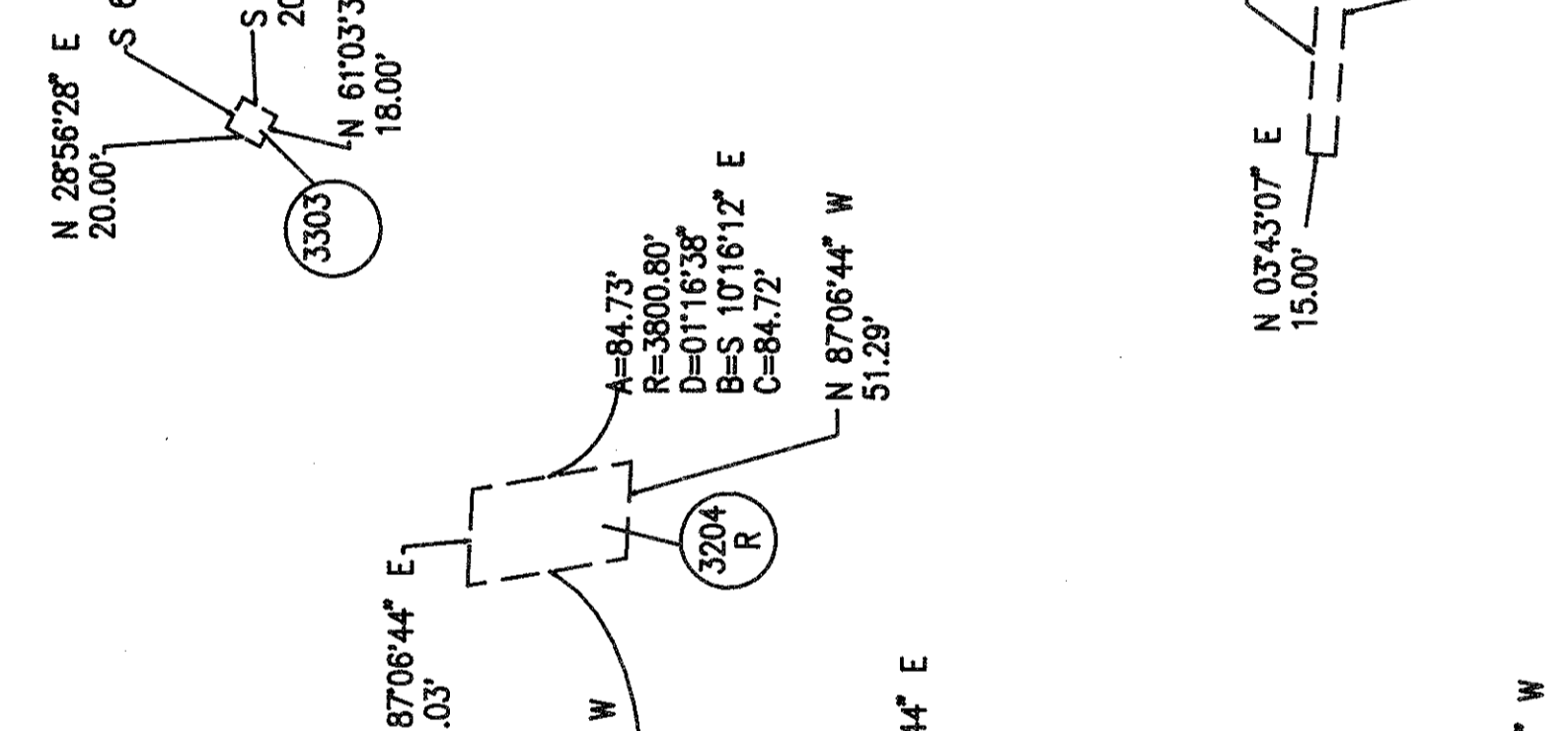
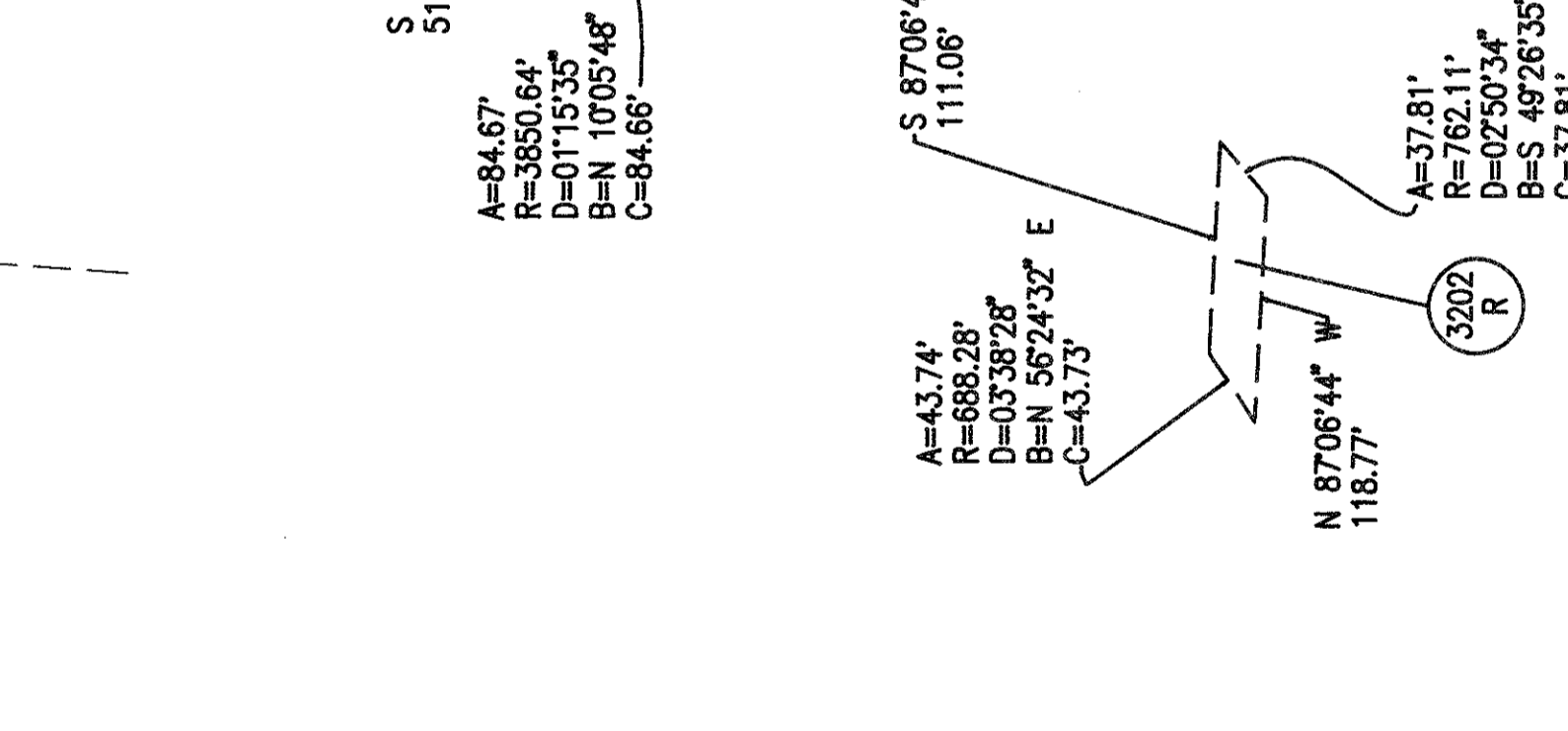
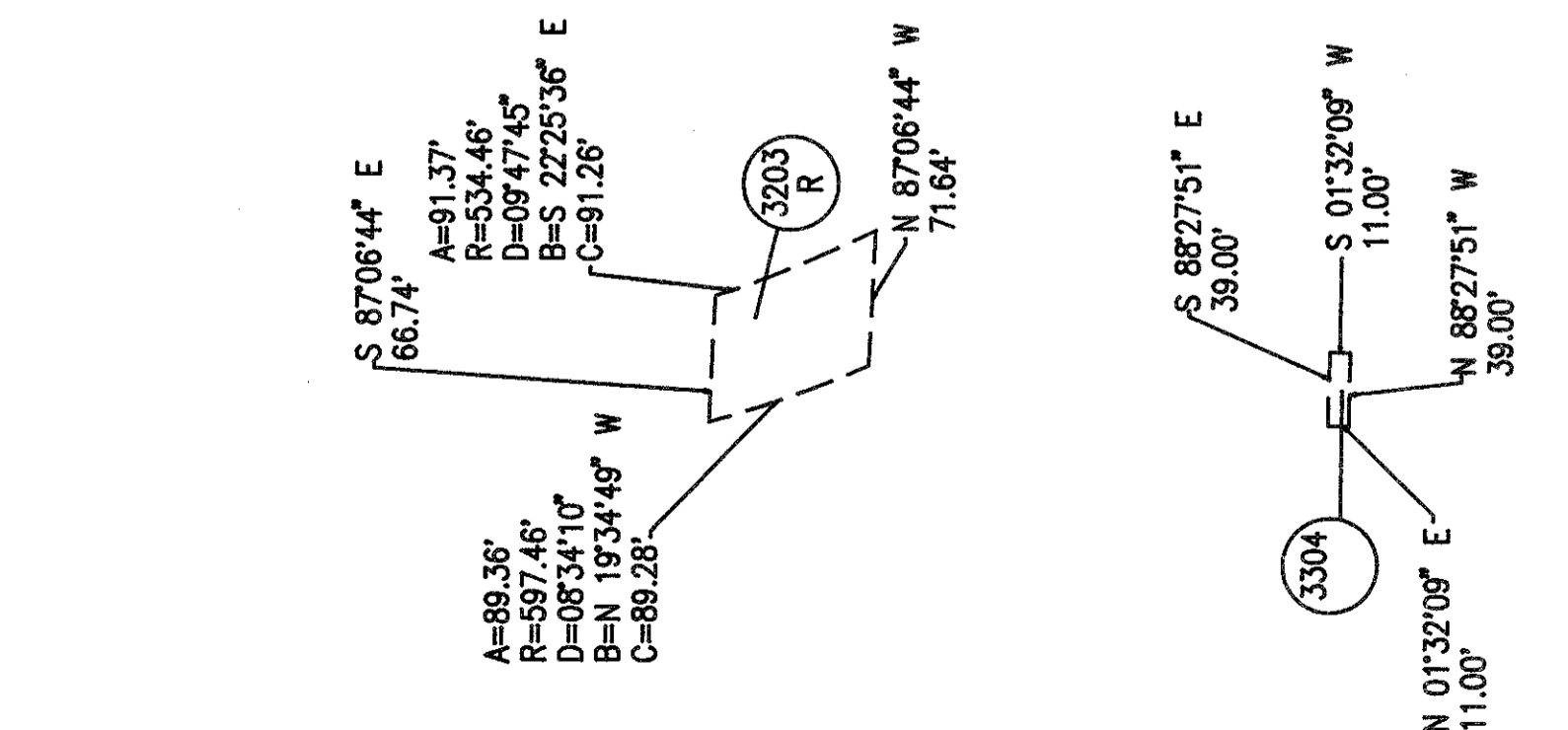
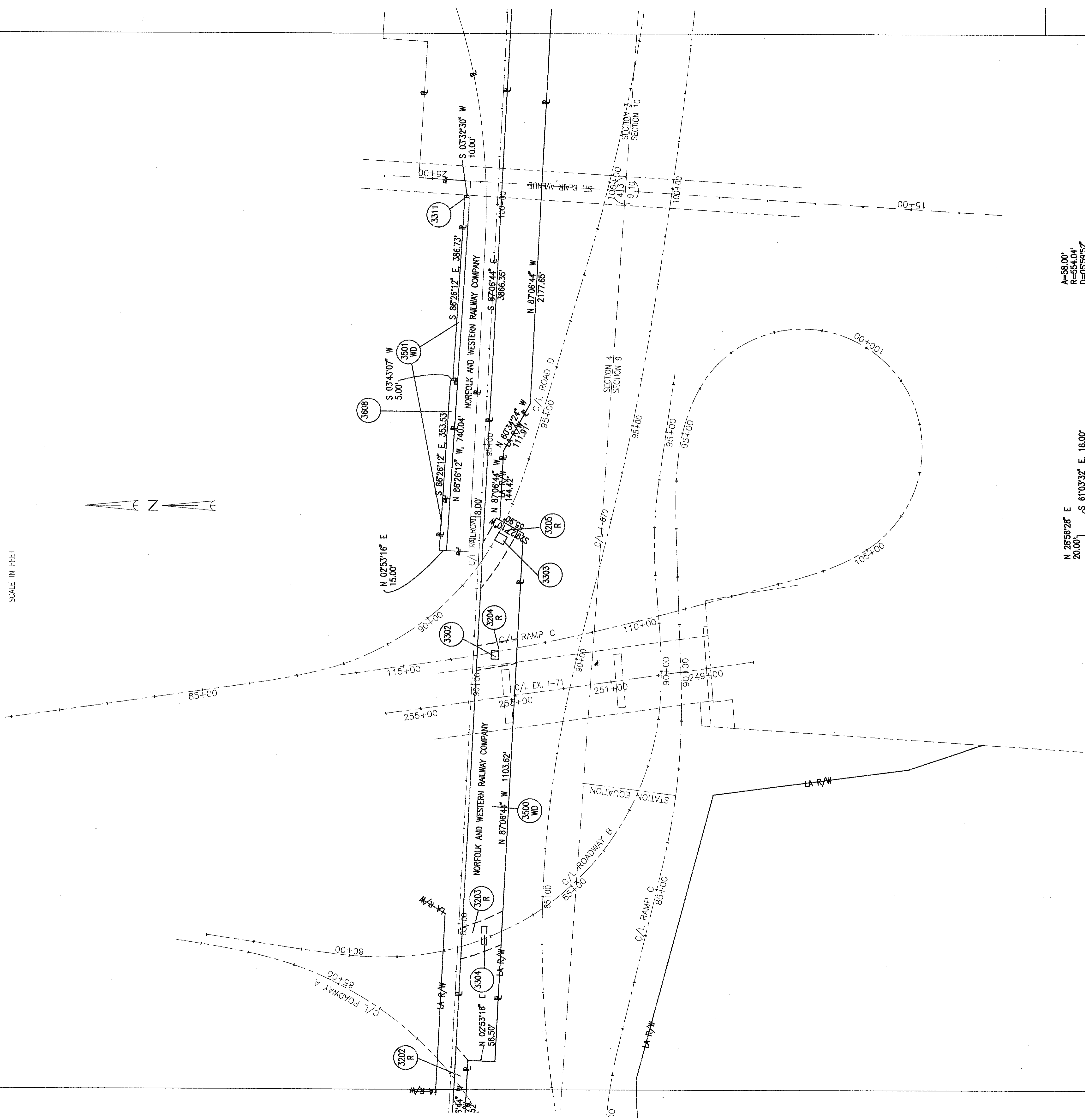
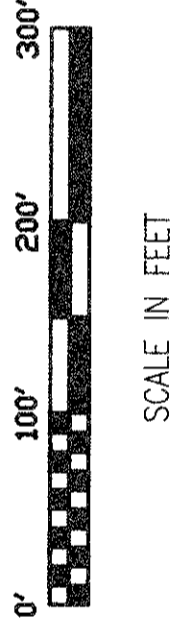
FRANKLIN COUNTY
REFUGEE LANDS
SECTIONS 4 & 9, T 5 N, R 22 W



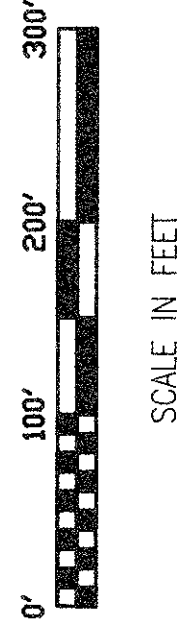
SCALE IN FEET



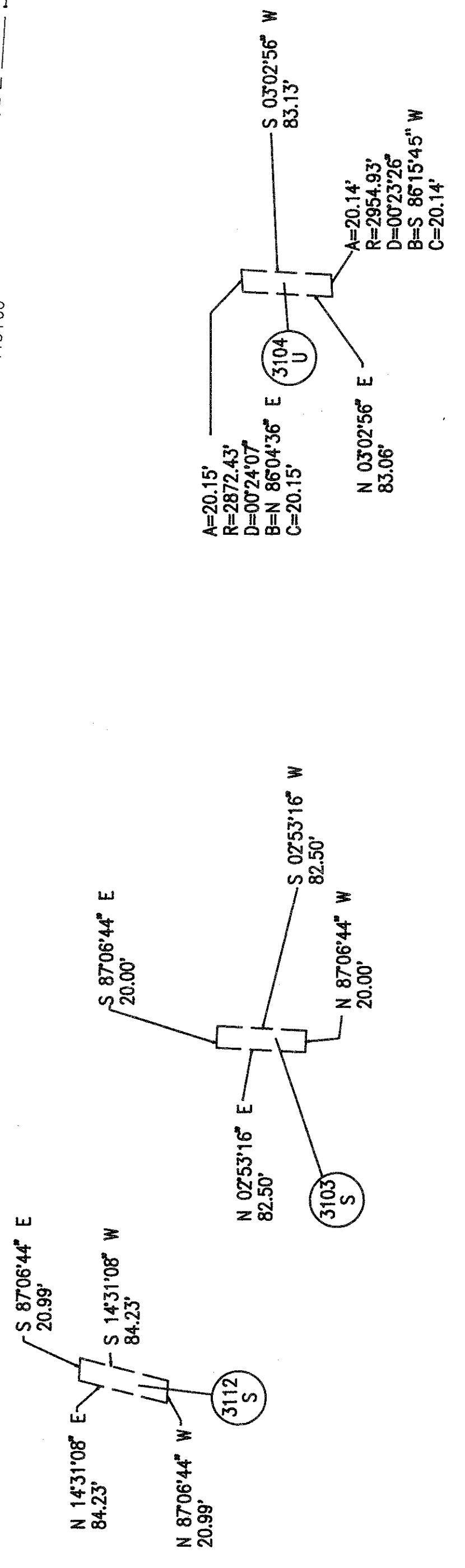
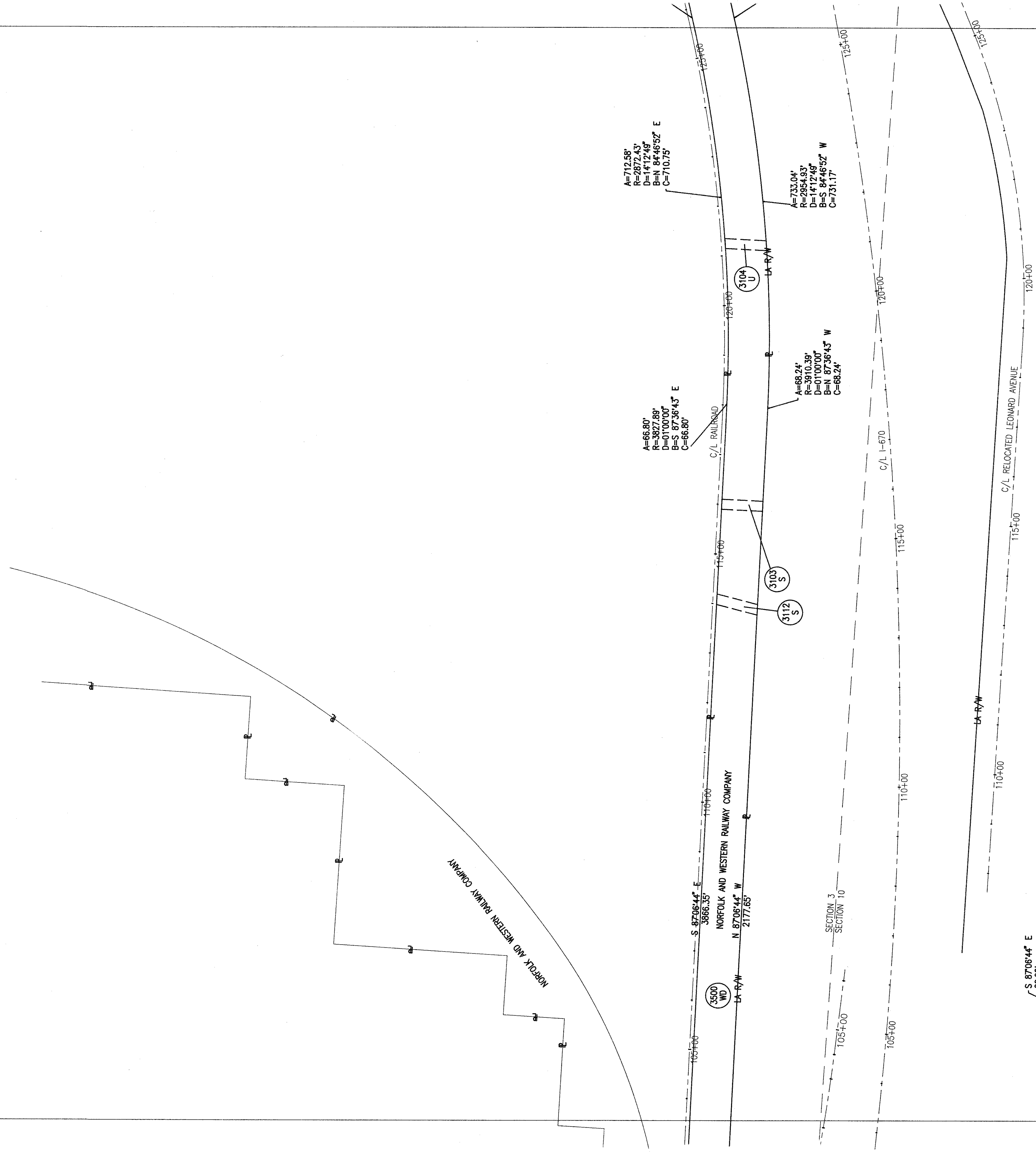
FRANKLIN COUNTY
REFUGEE LANDS
SECTIONS 3, 4, 9 & 10, T 5 N, R 22 W



FRANKLIN COUNTY
REFUGEE LANDS
SECTION 3 & 10, T 5 N, R 22 W



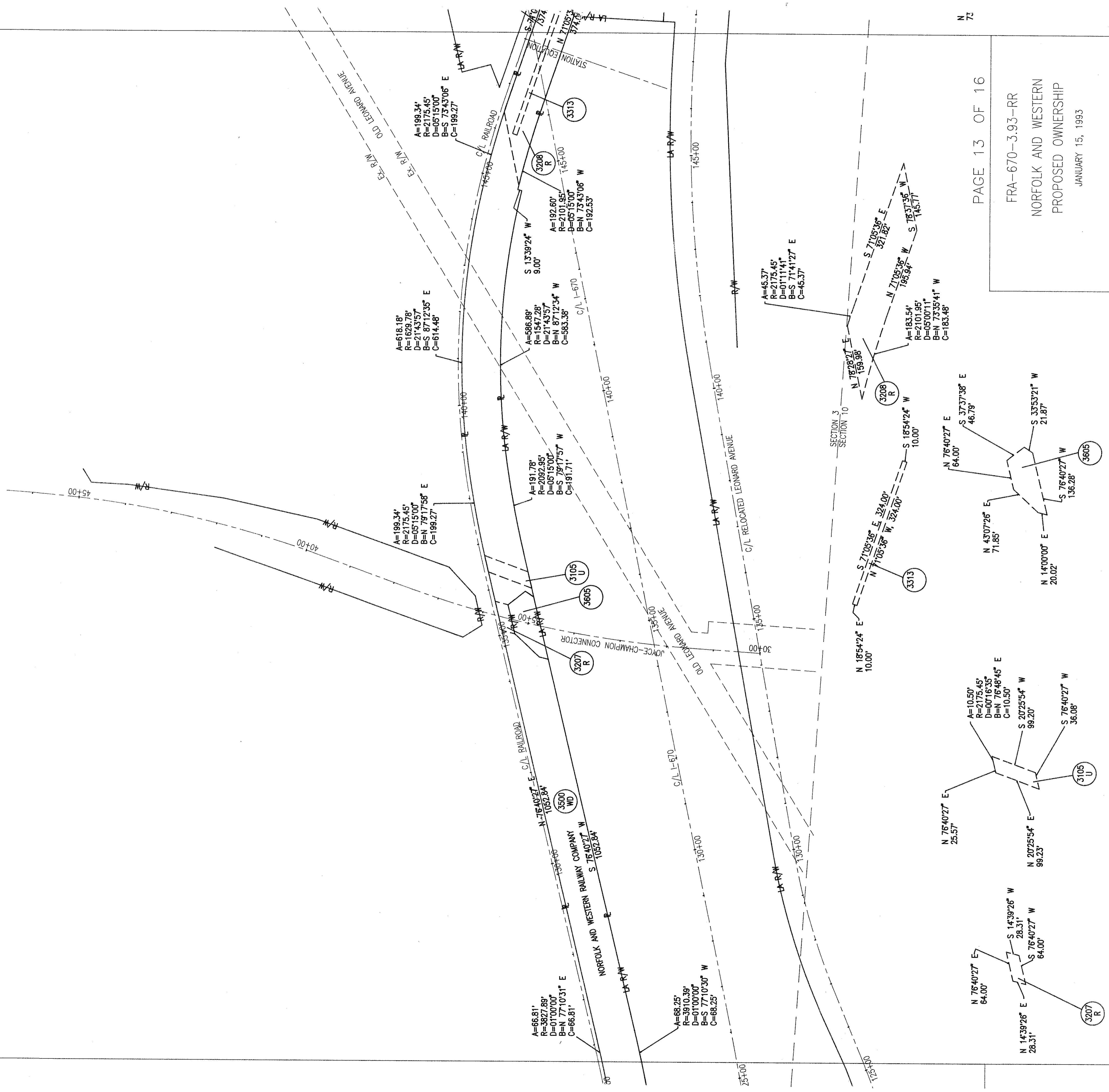
SCALE IN FEET



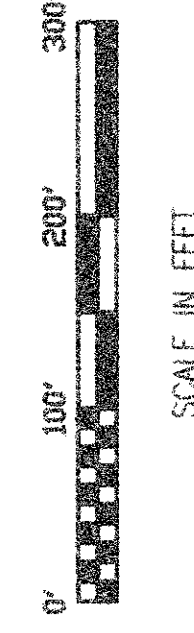
FRANKLIN COUNTY
REFUGEE LANDS
SECTIONS 3 & 10, T 5 N, R 22 W



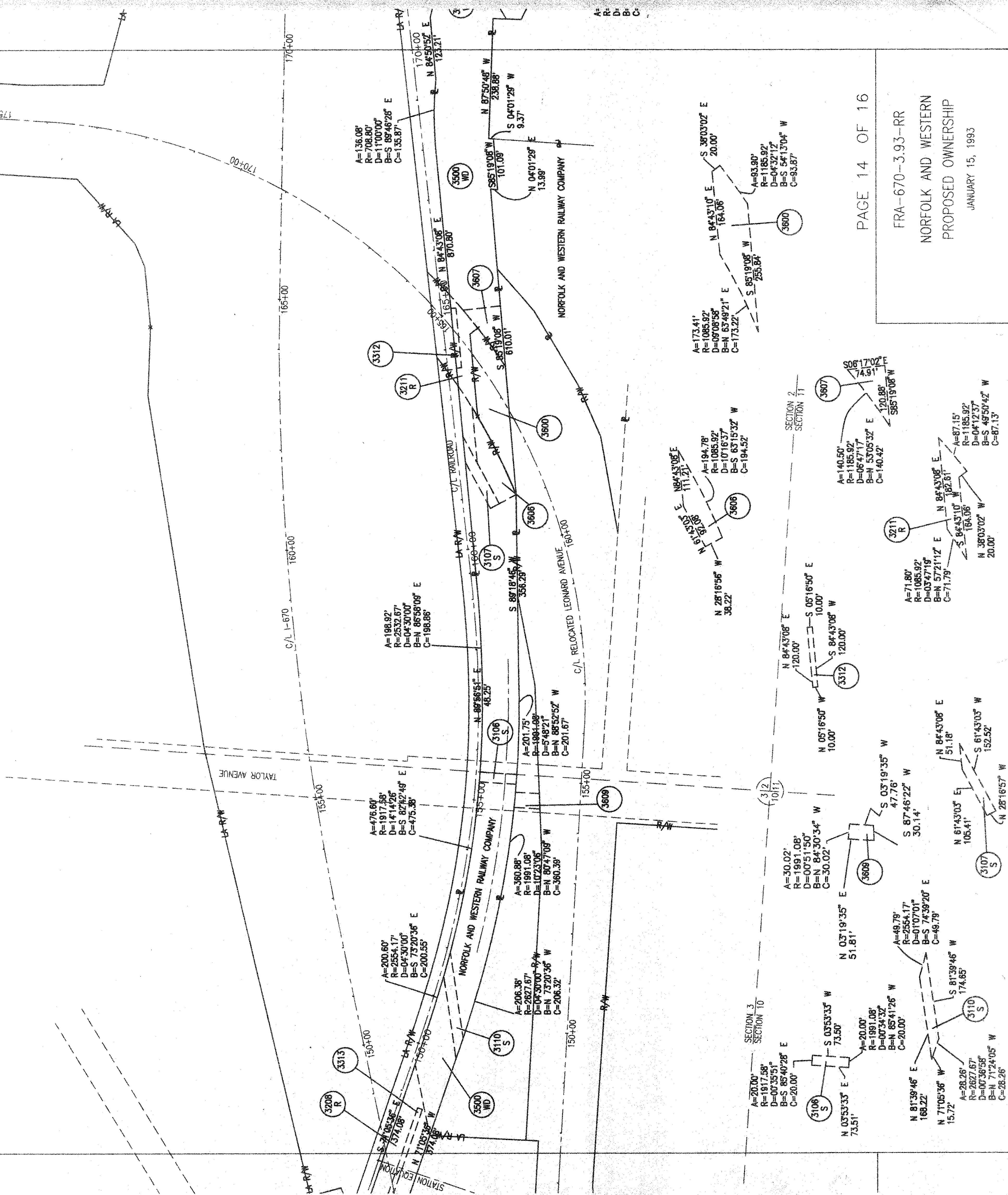
SCALE IN FEET



FRANKLIN COUNTY
REFUGEE LANDS
SECTION 2, 3, 10 & 11, T 5 N, R 22 W

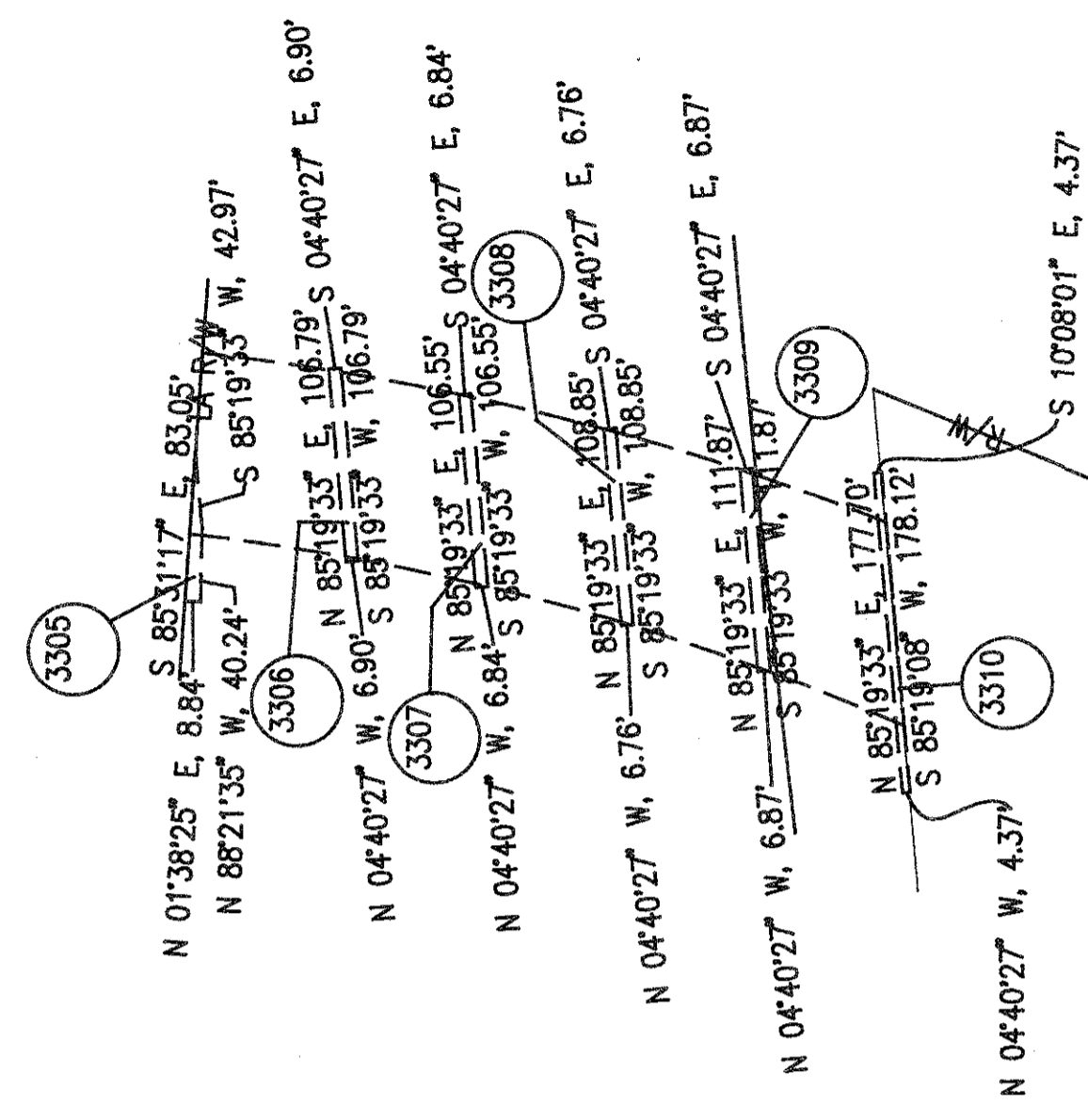
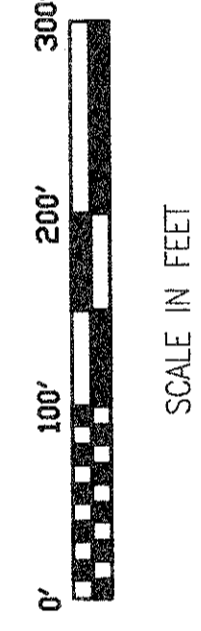


SCALE IN FEET

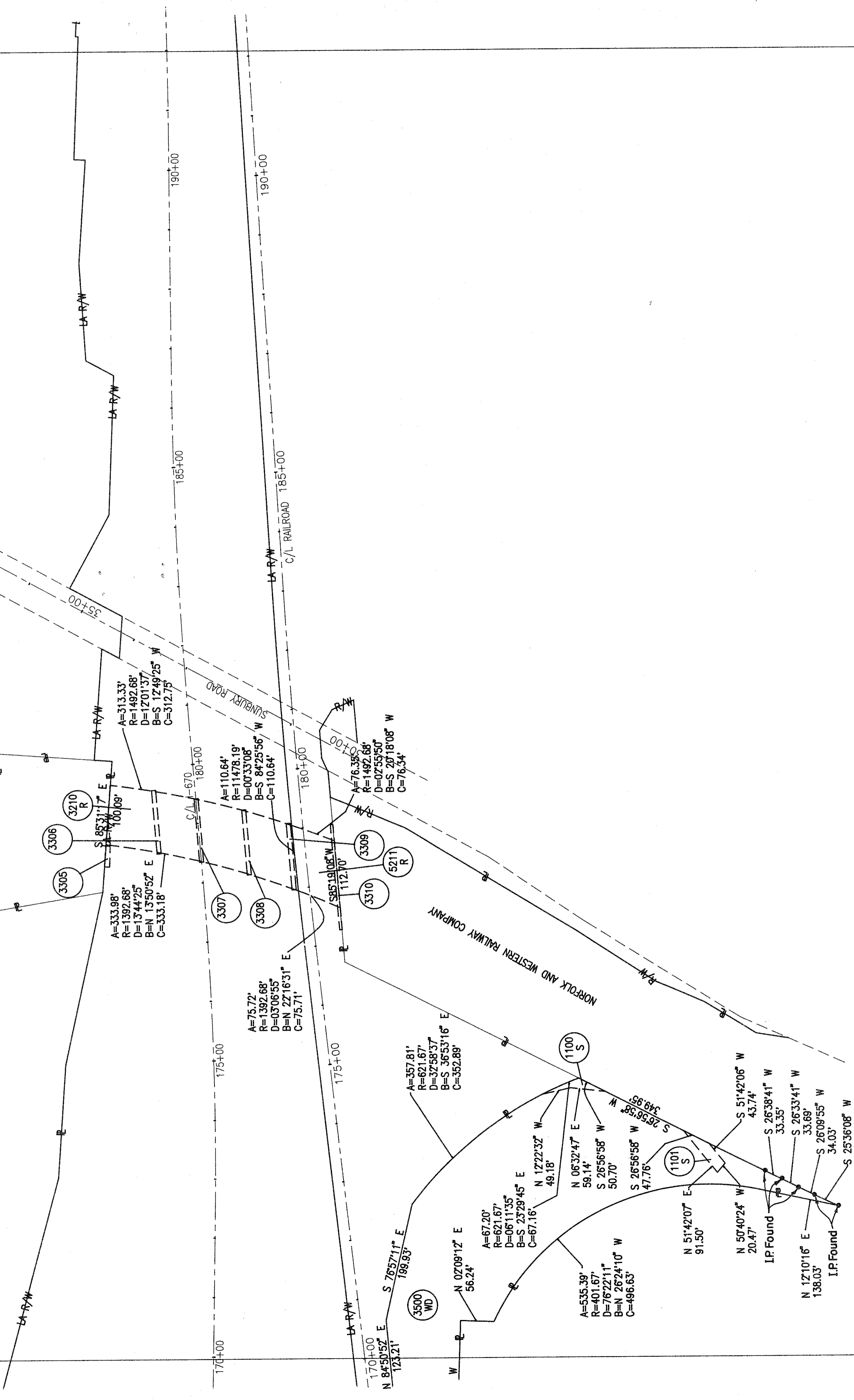


RA/93

FRANKLIN COUNTY
REFUGEE LANDS
SECTIONS 2 & 11, T 5 N, R 22 W



NORFOLK AND WESTERN RAILWAY COMPANY



PROPOSED OWNERSHIP SUMMARY

CALC. BY: VDK DATE: 4/88	FRA-670-3.93-RR	OHIO
CHKD. BY: DATE:		FHWA REGION 5

PARCEL	RESERVED PARCEL	PROPOSED OWNER	SHEET NO.	PARCEL AREA	RESERVED PARCEL AREA	P.R.O. IN PARCEL	NET PARCEL AREA	TYPE OF RESERVED PARCEL	FINAL OWNER OF RESERVED PARCEL	AS ACQUIRED	
										BOOK	PAGE
3500 WD		NORFOLK AND WESTERN RAILWAY COMPANY	10-15	23.663 AC.		0.856 AC.	22.807 AC.				
	1100 S		15		0.020 AC.	0.000 AC.	0.020 AC.	STORM SEWER EASEMENT	CITY OF COLUMBUS (UNDERLYING FEE RETAINED BY N&W)		
	1101 S		15		0.031 AC.	0.000 AC.	0.031 AC.	STORM SEWER EASEMENT	CITY OF COLUMBUS (UNDERLYING FEE RETAINED BY N&W)		
	3100 S		10		0.186 AC.	0.000 AC.	0.186 AC.	STORM SEWER EASEMENT	CITY OF COLUMBUS (UNDERLYING FEE RETAINED BY N&W)		
	3101 U		10		0.016 AC.	0.000 AC.	0.016 AC.	WATERLINE EASEMENT	CITY OF COLUMBUS (UNDERLYING FEE RETAINED BY N&W)		
	3103 S		12		0.038 AC.	0.000 AC.	0.038 AC.	SANITARY SEWER EASEMENT	CITY OF COLUMBUS (UNDERLYING FEE RETAINED BY N&W)		
	3104 U		12		0.038 AC.	0.000 AC.	0.038 AC.	WATERLINE EASEMENT	CITY OF COLUMBUS (UNDERLYING FEE RETAINED BY N&W)		
	3105 U		13		0.068 AC.	0.000 AC.	0.068 AC.	WATERLINE EASEMENT	CITY OF COLUMBUS (UNDERLYING FEE RETAINED BY N&W)		
	3106 S		14		0.034 AC.	0.034 AC.	0.000 AC.	STORM SEWER EASEMENT	CITY OF COLUMBUS (UNDERLYING FEE RETAINED BY N&W)		
	3107 S		14		0.059 AC.	0.000 AC.	0.059 AC.	STORM SEWER EASEMENT	CITY OF COLUMBUS (UNDERLYING FEE RETAINED BY N&W)		
	3110 S		14		0.079 AC.	0.000 AC.	0.079 AC.	STORM SEWER EASEMENT	CITY OF COLUMBUS (UNDERLYING FEE RETAINED BY N&W)		
	3112 S		12		0.040 AC.	0.000 AC.	0.040 AC.	STORM SEWER EASEMENT	CITY OF COLUMBUS (UNDERLYING FEE RETAINED BY N&W)		
	3113 S		10		0.013 AC.	0.000 AC.	0.013 AC.	STORM SEWER EASEMENT	CITY OF COLUMBUS (UNDERLYING FEE RETAINED BY N&W)		
	3200 R		10		0.142 AC.	0.000 AC.	0.142 AC.	AERIAL EASEMENT	STATE OF OHIO (UNDERLYING FEE RETAINED BY N&W)		
	3201 R		10		0.064 AC.	0.048 AC.	0.016 AC.	AERIAL EASEMENT	CITY OF COLUMBUS (UNDERLYING FEE RETAINED BY N&W)		
	3202 R		11		0.069 AC.	0.000 AC.	0.069 AC.	AERIAL EASEMENT	STATE OF OHIO (UNDERLYING FEE RETAINED BY N&W)		
	3203 R		11		0.131 AC.	0.000 AC.	0.131 AC.	AERIAL EASEMENT	STATE OF OHIO (UNDERLYING FEE RETAINED BY N&W)		
	3204 R		11		0.097 AC.	0.007 AC.	0.090 AC.	AERIAL EASEMENT	STATE OF OHIO (UNDERLYING FEE RETAINED BY N&W)		
	3205 R		11		0.122 AC.	0.000 AC.	0.122 AC.	AERIAL EASEMENT	STATE OF OHIO (UNDERLYING FEE RETAINED BY N&W)		
	3207 R		13		0.037 AC.	0.000 AC.	0.037 AC.	AERIAL EASEMENT	CITY OF COLUMBUS (UNDERLYING FEE RETAINED BY N&W)		
	3208 R		13,14		0.627 AC.	0.000 AC.	0.627 AC.	AERIAL EASEMENT	STATE OF OHIO (UNDERLYING FEE RETAINED BY N&W)		
	3211 R		14		0.152 AC.	0.000 AC.	0.152 AC.	AERIAL EASEMENT	CITY OF COLUMBUS (UNDERLYING FEE RETAINED BY N&W)		
	3302		11		0.006 AC.	0.000 AC.	0.006 AC.	PIER EASEMENT	STATE OF OHIO (UNDERLYING FEE RETAINED BY N&W)		
	3303		11		0.008 AC.	0.000 AC.	0.008 AC.	PIER EASEMENT	STATE OF OHIO (UNDERLYING FEE RETAINED BY N&W)		
	3304		11		0.010 AC.	0.000 AC.	0.010 AC.	PIER EASEMENT	STATE OF OHIO (UNDERLYING FEE RETAINED BY N&W)		
	3600		14		0.321 AC.	0.000 AC.	0.321 AC.	PERMANENT EASEMENT	CITY OF COLUMBUS (UNDERLYING FEE RETAINED BY N&W)		
	3312		14		0.028 AC.	0.000 AC.	0.028 AC.	PIER EASEMENT	CITY OF COLUMBUS (UNDERLYING FEE RETAINED BY N&W)		
	3313		13,14		0.074 AC.	0.000 AC.	0.074 AC.	PIER EASEMENT	STATE OF OHIO (UNDERLYING FEE RETAINED BY N&W)		
	3602		10		0.265 AC.	0.074 AC.	0.191 AC.	PERMANENT EASEMENT	CITY OF COLUMBUS (UNDERLYING FEE RETAINED BY N&W)		
	3605		13		0.151 AC.	0.000 AC.	0.151 AC.	PERMANENT EASEMENT	STATE OF OHIO (UNDERLYING FEE RETAINED BY N&W)		
	3606		14		0.144 AC.	0.000 AC.	0.144 AC.	PERMANENT EASEMENT	CITY OF COLUMBUS (UNDERLYING FEE RETAINED BY N&W)		
	3607		14		0.099 AC.	0.000 AC.	0.099 AC.	PERMANENT EASEMENT	CITY OF COLUMBUS (UNDERLYING FEE RETAINED BY N&W)		
3609			14	0.034 AC.		0.034 AC.	0.000 AC.	ACCESS EASEMENT	N&W (UNDERLYING FEE RETAINED BY THE STATE OF OHIO)		
3501 WD			11	0.126 AC.		0.000 AC.	0.126 AC.				
	3311		11		0.001 AC.	0.000 AC.	0.001 AC.	PIER EASEMENT	CITY OF COLUMBUS (UNDERLYING FEE RETAINED BY N&W)		
3608			11	0.085 AC.		0.000 AC.	0.085 AC.	PERMANENT EASEMENT	N&W (UNDERLYING FEE RETAINED BY GREAT EASTERN PACKING AND PAPER STOCK CORP.)		
3210 R			15	0.743 AC.		0.743 AC.	0.000 AC.	AERIAL EASEMENT	N&W (UNDERLYING FEE RETAINED BY THE STATE OF OHIO)		
3305			15	0.011 AC.		0.011 AC.	0.000 AC.	PIER EASEMENT	N&W (UNDERLYING FEE RETAINED BY THE STATE OF OHIO)		
3306			15	0.017 AC.		0.017 AC.	0.000 AC.	PIER EASEMENT	N&W (UNDERLYING FEE RETAINED BY THE STATE OF OHIO)		
3307			15	0.017 AC.		0.017 AC.	0.000 AC.	PIER EASEMENT	N&W (UNDERLYING FEE RETAINED BY THE STATE OF OHIO)		
3308			15	0.017 AC.		0.017 AC.	0.000 AC.	PIER EASEMENT	N&W (UNDERLYING FEE RETAINED BY THE STATE OF OHIO)		
3309			15	0.018 AC.		0.018 AC.	0.000 AC.	PIER EASEMENT	N&W (UNDERLYING FEE RETAINED BY THE STATE OF OHIO)		
5211 R			15	0.175 AC.		0.000 AC.	0.175 AC.	AERIAL EASEMENT	N&W (UNDERLYING FEE RETAINED BY JOINT)		
3310			15	0.018 AC.		0.000 AC.	0.018 AC.	PIER EASEMENT	N&W (UNDERLYING FEE RETAINED BY JOINT)		

DATE	REVISION	BY	
COMPLETION DATE	1-15-93		