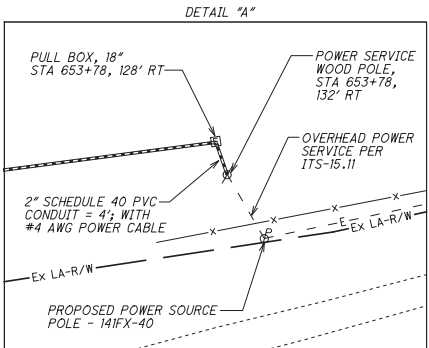
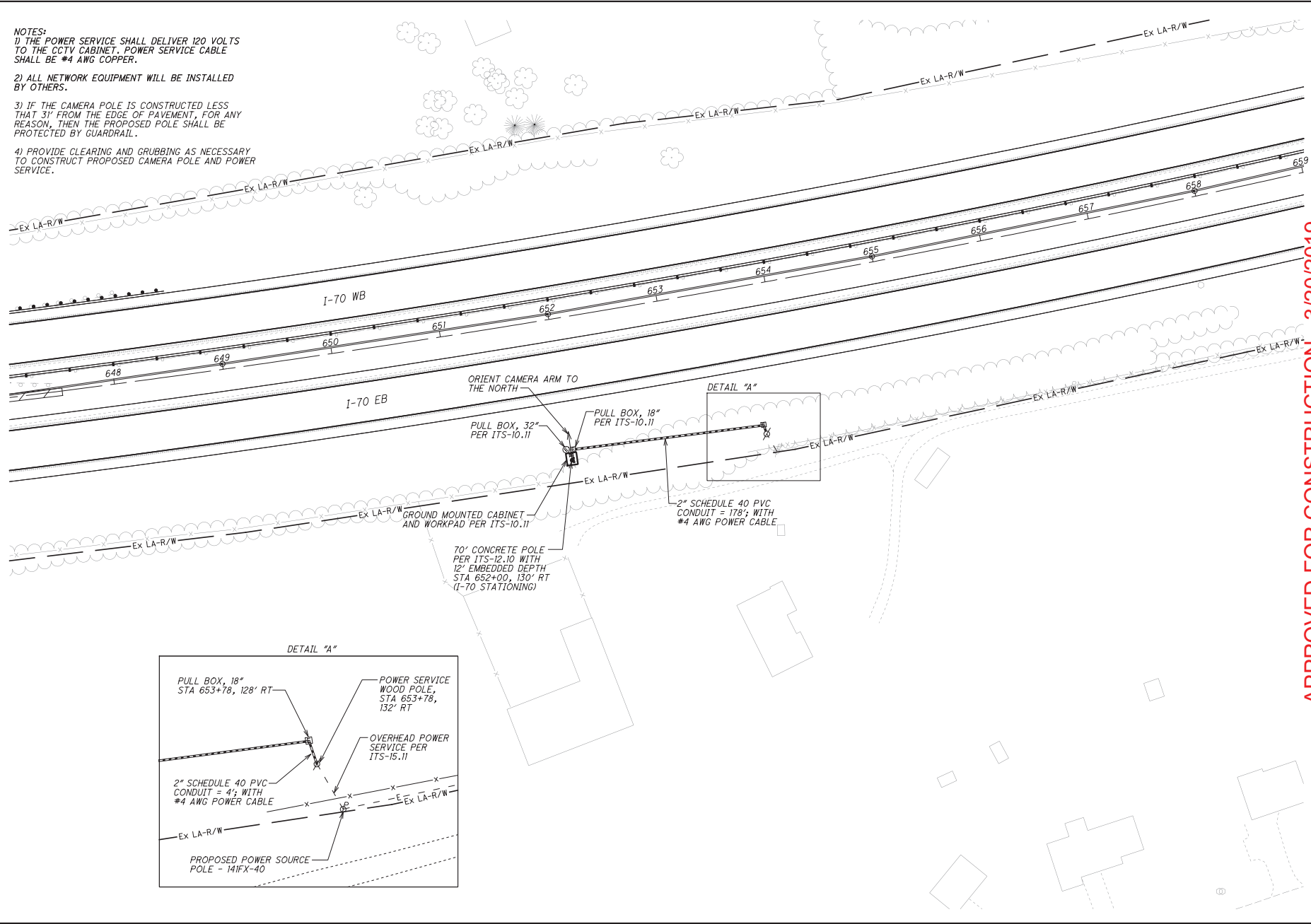


NOTES:
 1) THE POWER SERVICE SHALL DELIVER 120 VOLTS TO THE CCTV CABINET. POWER SERVICE CABLE SHALL BE #4 AWG COPPER.

2) ALL NETWORK EQUIPMENT WILL BE INSTALLED BY OTHERS.

3) IF THE CAMERA POLE IS CONSTRUCTED LESS THAN 31' FROM THE EDGE OF PAVEMENT, FOR ANY REASON, THEN THE PROPOSED POLE SHALL BE PROTECTED BY GUARDRAIL.

4) PROVIDE CLEARING AND GRUBBING AS NECESSARY TO CONSTRUCT PROPOSED CAMERA POLE AND POWER SERVICE.




 0 20 40
 HORIZONTAL SCALE IN FEET
 CALCULATED M.J.H.
 CHECKED K.A.E.

APPROVED FOR CONSTRUCTION - 3/20/2019

ITS PLAN
 CAMERA #2 - I-70 AT STA 652+00

MAD-70-8.62

456
470

C:\EEC\Projects\MAD-70\ELR\CADD\signals\Sheets\07109_CP002.dgn Design 3/9/2019 12:21:40 PM mhunter