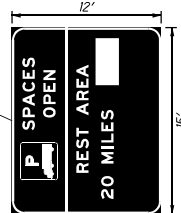
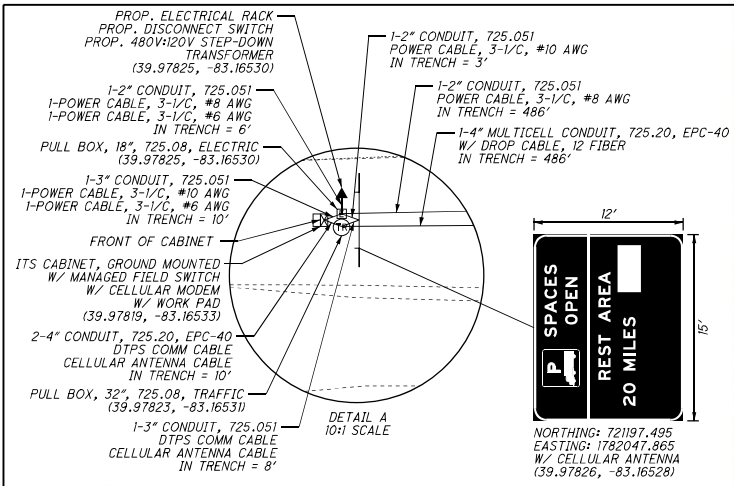
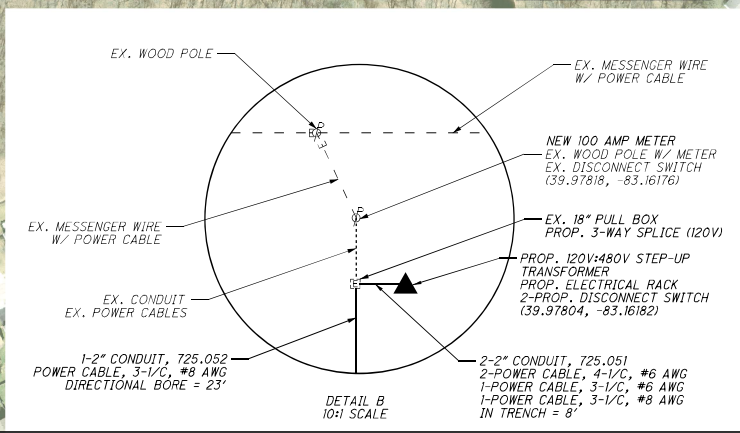
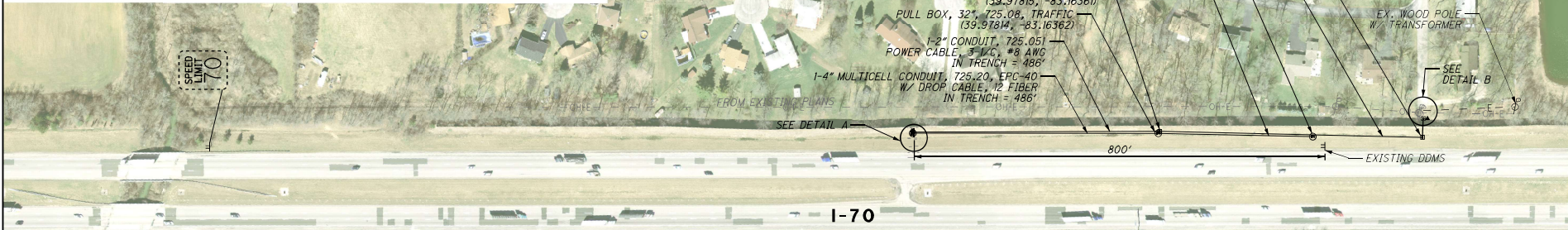


T:\Project\Drawings\03772\Design\Signals\Sheets\03772_CPO10.dgn 29-MAF-2018 2:21PM Wilson



NORTHING: 721197.495
EASTING: 1782047.865
W/ CELLULAR ANTENNA (39.97826, -83.16528)



- DESIGN NOTES:
1. EDGE OF SIGN TO MAINTAIN MINIMUM 30' DISTANCE FROM EDGE OF TRAVELED WAY (CLEAR ZONE).
 2. POWER TO BE PULLED FROM EXISTING DDMS POWER SOURCE, POWER SERVICE, AS PER PLAN, TYPE C.
 3. EXISTING POWER SUPPLIED BY AEP, OHIO.
 4. SEE ELECTRICAL DETAILS FOR POWER CONNECTION.

APPROVED FOR CONSTRUCTION
LAST REVISED 02-26-2018



0 100 200
HORIZONTAL SCALE IN FEET

CALCULATED
NEW
CHECKED
JRL

I-70 - DTPS 90.50
WB TRUCK PARKING SIGN

VAR-TPIMS

50
131