

BU: MAD-70-10.27

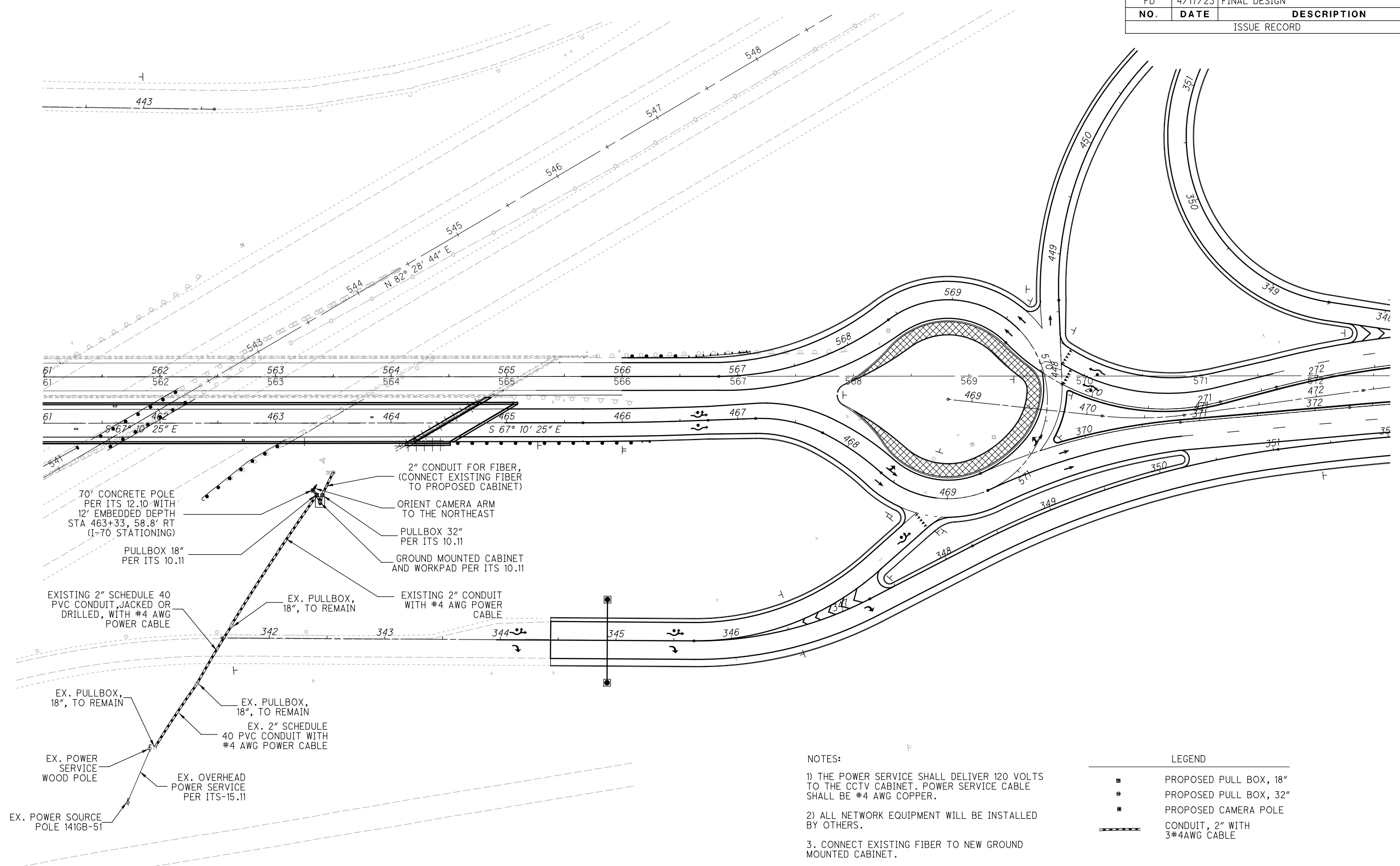
NO.	DATE	DESCRIPTION
FD	4/17/23	FINAL DESIGN
		ISSUE RECORD



CALCULATED JTB  
 CHECKED JTB

**ITS PLAN  
 CAMERA #1 - I - 70 AT SR-29 INTERCHANGE**

**MAD-70-10.27  
 PHASE 2**



- NOTES:**
- 1) THE POWER SERVICE SHALL DELIVER 120 VOLTS TO THE CCTV CABINET. POWER SERVICE CABLE SHALL BE #4 AWG COPPER.
  - 2) ALL NETWORK EQUIPMENT WILL BE INSTALLED BY OTHERS.
  3. CONNECT EXISTING FIBER TO NEW GROUND MOUNTED CABINET.

**LEGEND**

	PROPOSED PULL BOX, 18"
	PROPOSED PULL BOX, 32"
	PROPOSED CAMERA POLE
	CONDUIT, 2" WITH 3#4AWG CABLE

G:\DE\Clients\Eagle\_Bridge\022305\_MAD-IR70\_10.77\93605\Design\Traffic\Sheets\93605\_TM001.dgn Sheet 4/17/2023 6:11:35 PM Plews