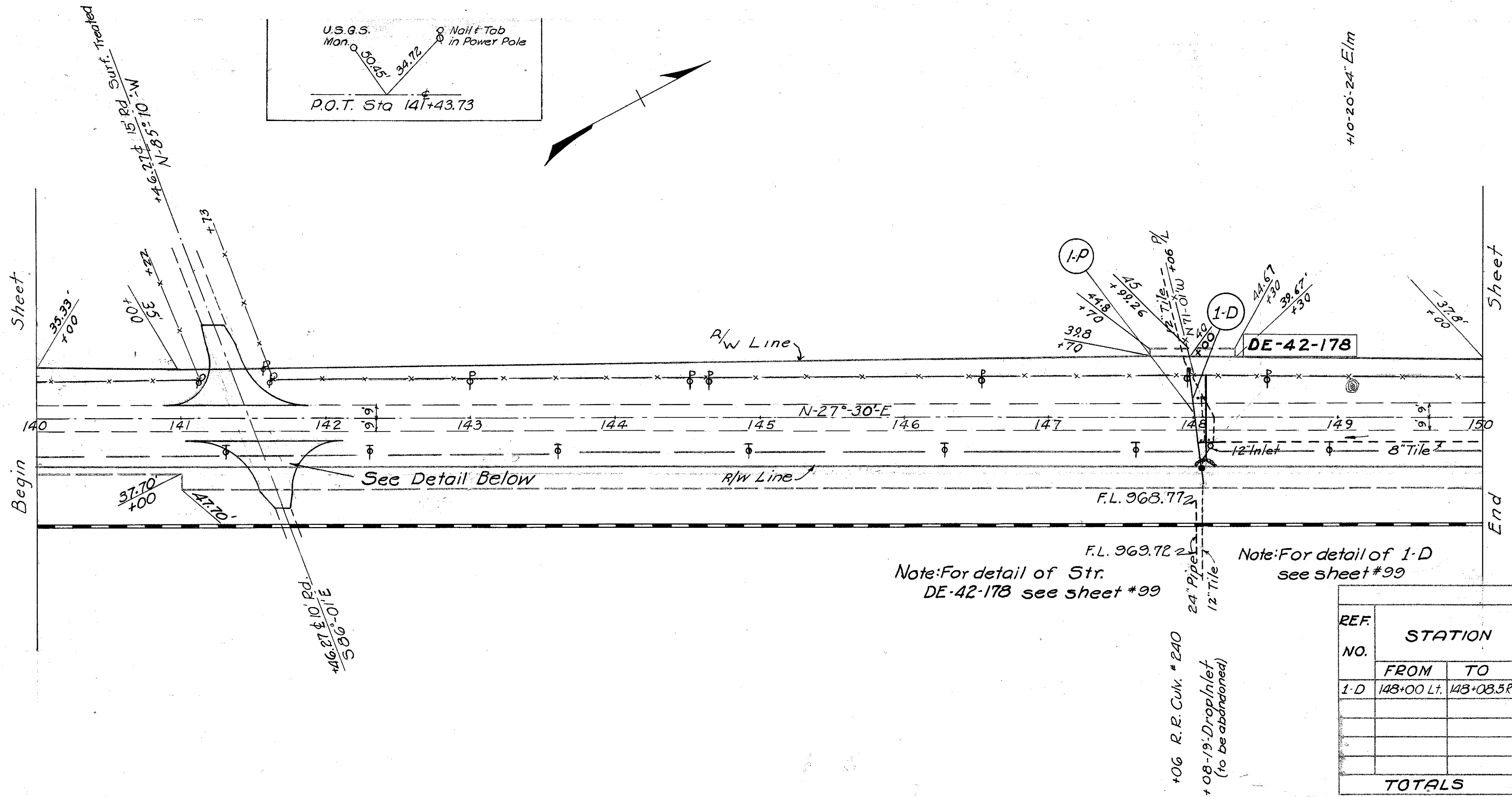


DIVISION 2 OHIO F-558 (II) POST WAR DEL-42-(12.21-18.72) MRW-42-(0.00-1.11)

TYPE FUNDS 29 105



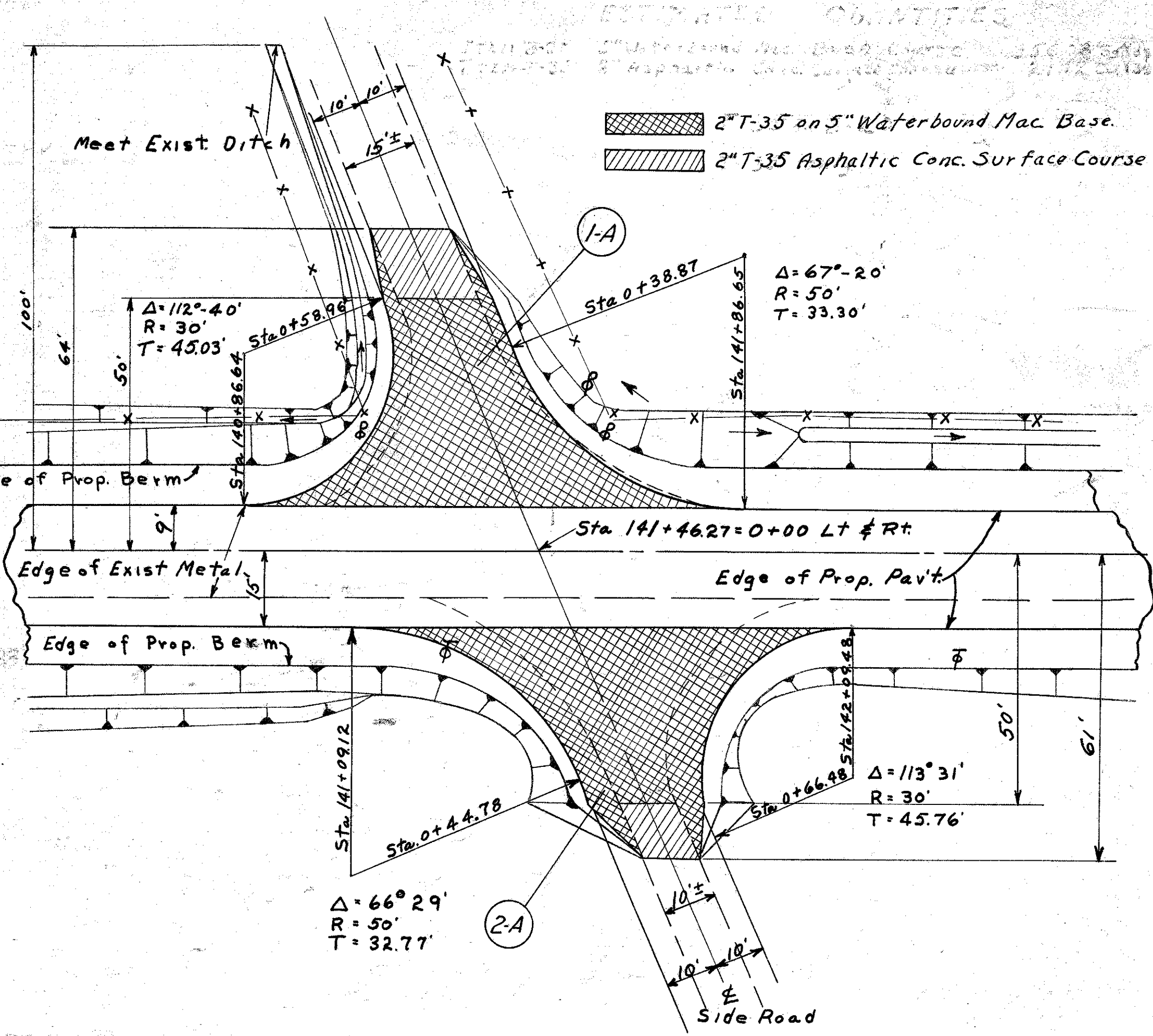
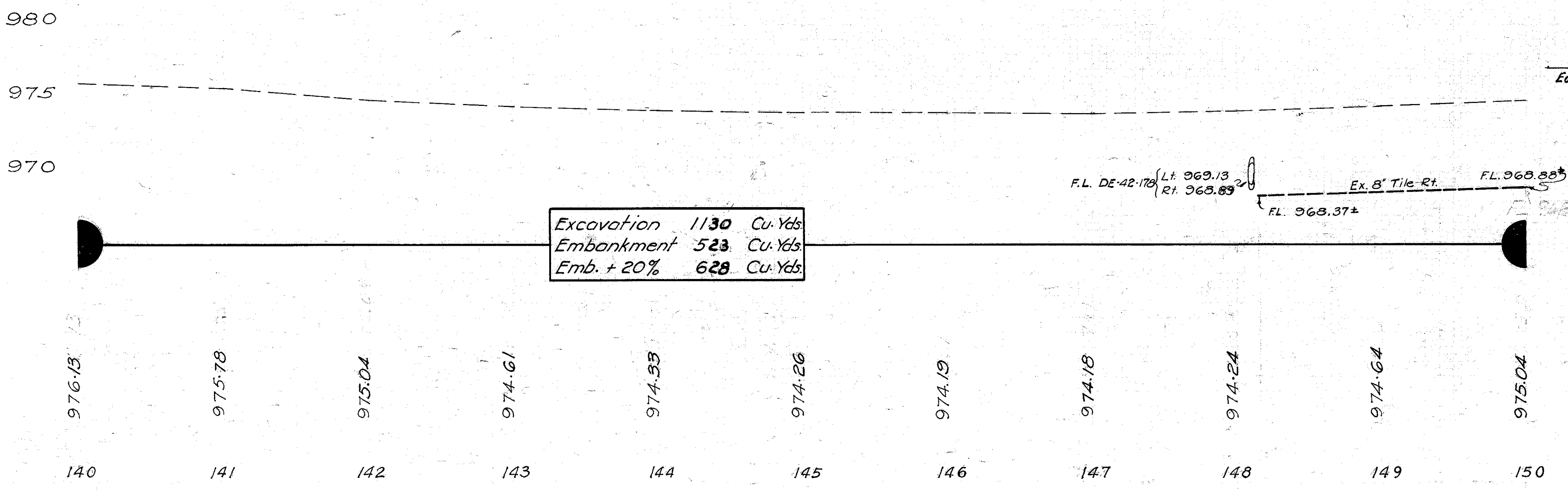
STRUCTURES - 20' SPAN AND UNDER										
STRUCTURE NO.	STATION	PRESENT STRUCTURE			DISPOSITION	PROPOSED STRUC.			SHEET No.	REMARKS
		TYPE	SIZE	LENGTH		TYPE	SIZE	LENGTH		
DE-42-178	148+08.5	Pipe	20"	23.7'	Remove	Pipe	21"	2'	99	

APPROACHES & EXTRA PAVEMENT							
REF. NO.	STATION	T-35 Asphaltic Conc. Surf. Course		B-35 3" Asp. Conc. Lev. Course	B-20 5" W.B. Max. Base Course	S-5-5 8" Class Emb. Mat.	E-8 Remove Ex. Pav't
		FROM	TO	Sq. Yds.	Sq. Yds.	Sq. Yds.	Sq. Yds.
1-A	140+86.64	141+86.65		11.21		183.80	
2-A	141+09.12	142+09.48		9.91		172.27	
1-P	148+05.8				27.20	27.20	27.20
TOTALS				21.12		27.20	383.27

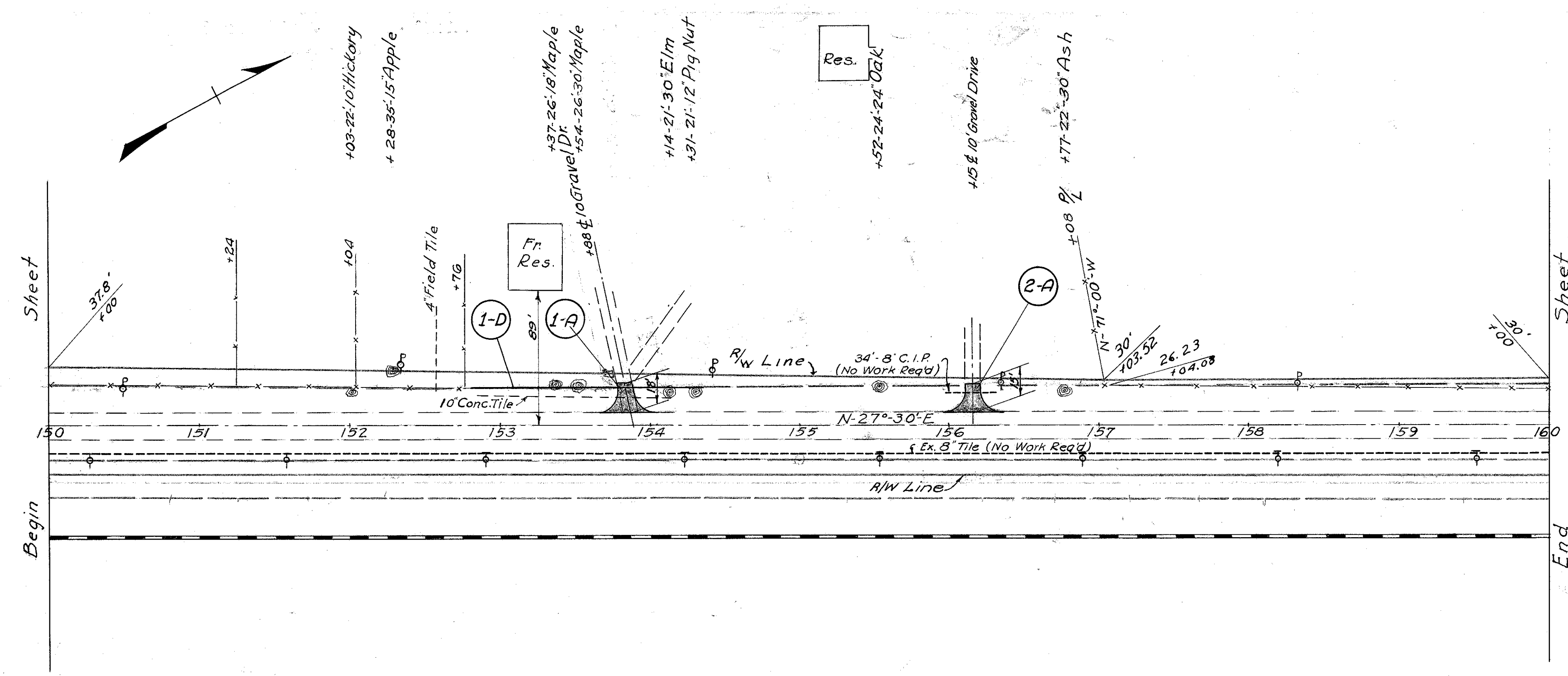
ROADWAY		DRAINAGE						REMARKS
REF. NO.	STATION	I-2 Pipe Under Pavement	I-3 Pipe	I-5 Pipe Spec. for I-2 Pipe	E-12 Pipe Removed & Disposed of	I-3 Catch Basins	I-16 Inlets Abandoned	
	FROM TO	12" Lin. Ft.	8" Lin. Ft.	Each	8' 12" Lin. Ft.	Each	Each	
I-D	148+00 Lt. 148+03.3 Rt.	30	16	1	8 59	1	1	Connect to Ex. 12" on Lt. & No. 7 C.B. on Rt.
TOTALS		30	16	1	8 59	1	1	

REMOVAL OF TREES & STUMPS			
STATION	SIDE	SIZE & KIND	No.
149+10	Lt.	24" Elm	1
TOTAL			1

BM 141+09  
U.S.G. & G.S. BM 34 Lt.  
Elev. 976.58



STA. 140+00 to STA. 150+00

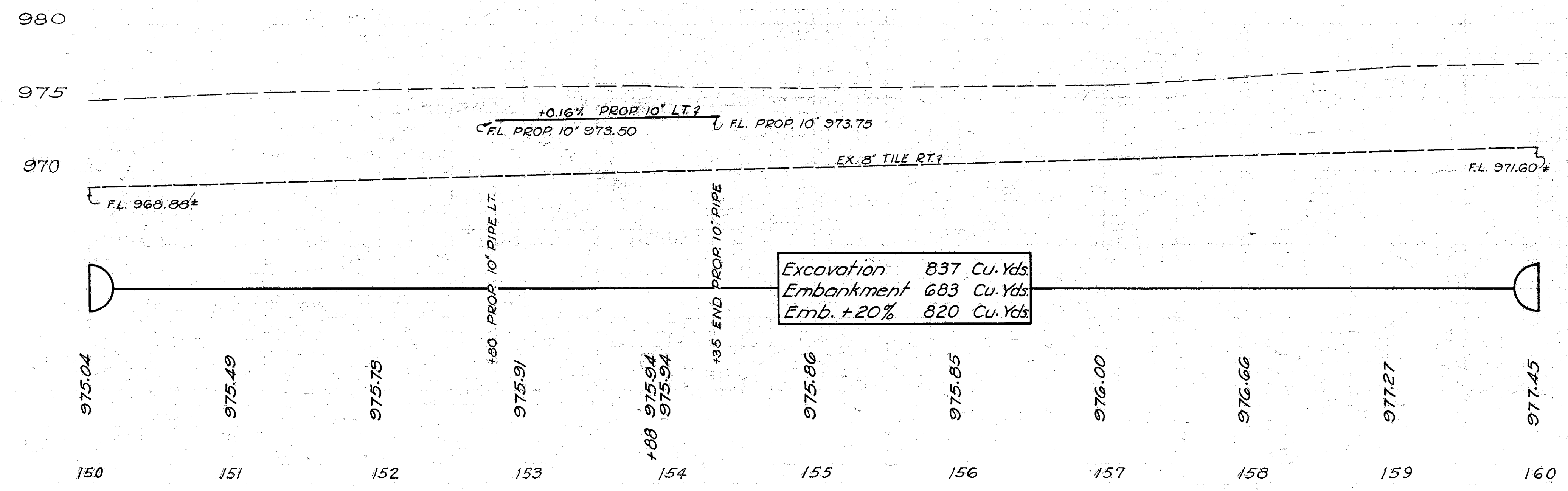


REF. NO.	STATION		ROADWAY			DRAINAGE	REMARKS
	FROM	TO	1-3 Pipe Lin. Ft.	1-3 Pipe Under Driveways Lin. Ft.	L-10 Sodding Sq. Yds.		
	1-D	152+80	154+35	130	25	10	
TOTALS			130	25	10		

REF. NO.	STATION	SIDE	DRIVES AND APPROACHES	
			1-17 Aggregate 6" thick Sq. Yds.	
1-A	153+88	Lt.	31	
2-A	156+15	Lt.	27	
TOTALS			58	

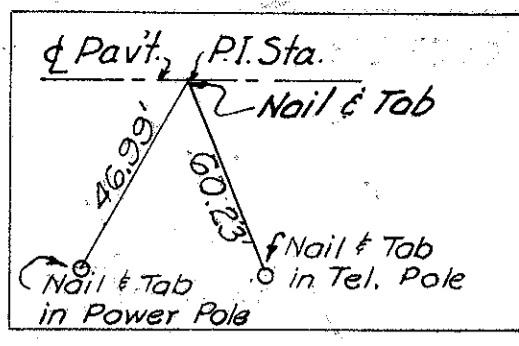
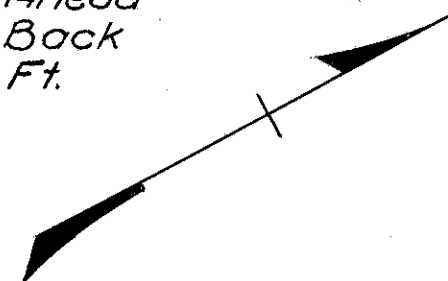
REMOVAL OF TREES & STUMPS				
STATION	SIDE	SIZE & KIND	NR	
152+03	Lt.	12" Hickory	1	
152+28	Lt.	15" Apple	1	
153+37	Lt.	18" Maple	1	
153+54	Lt.	30" Maple	1	
154+14	Lt.	30" Elm	1	
154+31	Lt.	12" Pig Nut	1	
Total			6	

B.M. Sta 154+20  
 Conc. Nail in Power Pole  
 33' Left  
 Elev. 976.19



**EQUATION STATION**

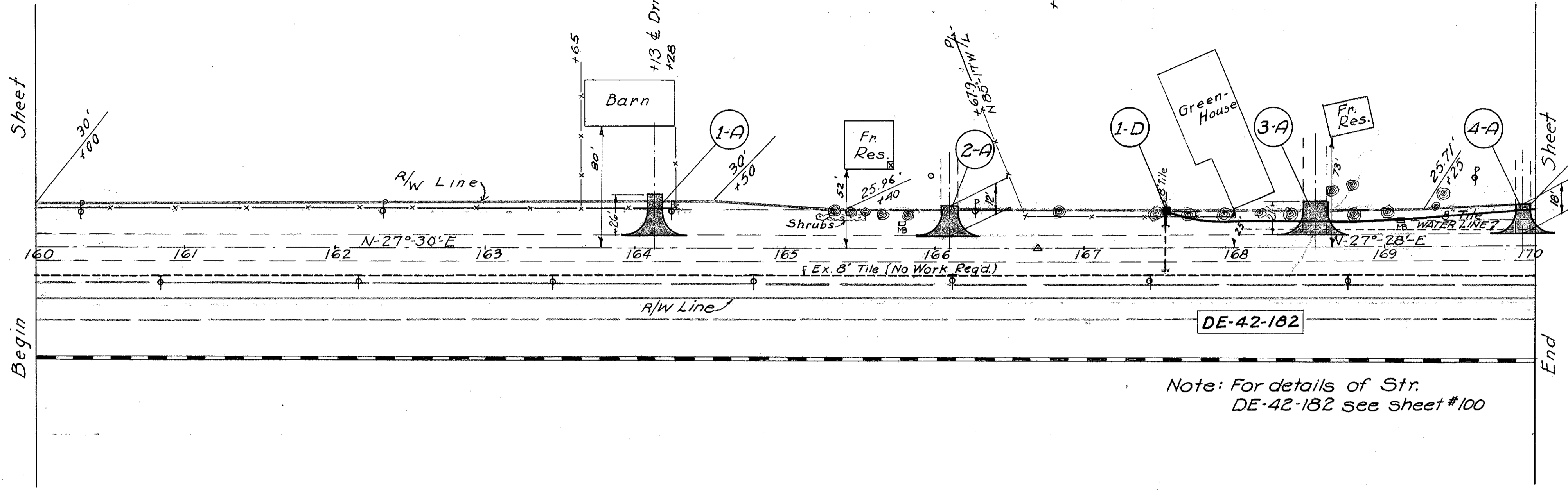
Sta 166+67.90 Ahead  
= Sta 166+67.40 Back  
Deduct 0.50 Lin. Ft.



- +32-23-4" Maple
- +42-23-4" Maple
- +53-22-6" Maple
- +64-21-4" Maple
- +81-21-4" Maple
- +98-47" Well
- +10-0" Dr.
- +92-23-20 Ash
- +48-21-5-24 Oak
- +70-21-5-30 Maple
- +94-22-24 Maple
- +77-22-15 Maple
- +99-21-30 Maple
- +54-0-15 Gravel Dr.
- +64-36-16 Hickory
- +80-21-15 Maple
- +81-41-5 Cedar
- +01-23-24 Maple
- +35-25 Shrub
- +38-34-10 Cherry
- +92-0-10 Dr.

PI = 166+67.90  
Δ = 00°02' Lt.

DIVISION 2 OHIO F-558 (11) TYPE FUNDS 31  
POST WAR 105  
DEL - 42 (12.21 - 18.72)  
MRW - 42 (0.00 - 1.11)



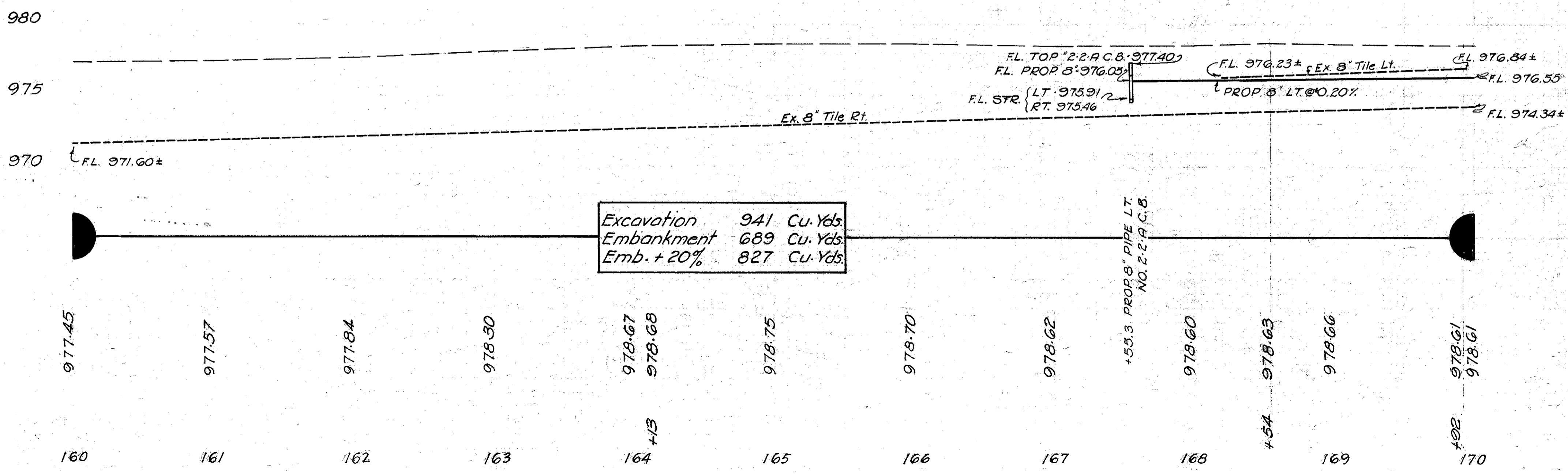
Note: For details of Str. DE-42-182 see sheet #100

STRUCTURE No.	STATION	PRESENT STRUCTURE			PROPOSED STRUC.			SHEET No.	REMARKS	
		TYPE	SIZE	LENGTH	DISPOSITION	TYPE	SIZE			LENGTH
DE-42-182	167+55.3	Pipe	12"	30'-2"	Extend	Pipe	12"	22'-0" Lt 16'-0" Rt	100	

REF. NO.	STATION	DRAINAGE			REMARKS
		I-3 Pipe Lin. Ft.	I-3 Pipe For Driveways Lin. Ft.	E-12 Pipe Rem. Disposed Lin. Ft.	
1-D	167+55.3 TO 170+00	200	50	176	Connect to #2-2A C.B. Back
<b>TOTALS</b>		<b>200</b>	<b>50</b>	<b>176</b>	

REF. NO.	STATIONS	SIDE	I-17 Aggregate 6" thick	
			Sq. Yds.	
1-A	164+13	Lt.	40	
2-A	166+10	Lt.	24	
3-A	168+54	Lt.	45	
4-A	169+92	Lt.	31	
<b>TOTALS</b>			<b>140</b>	

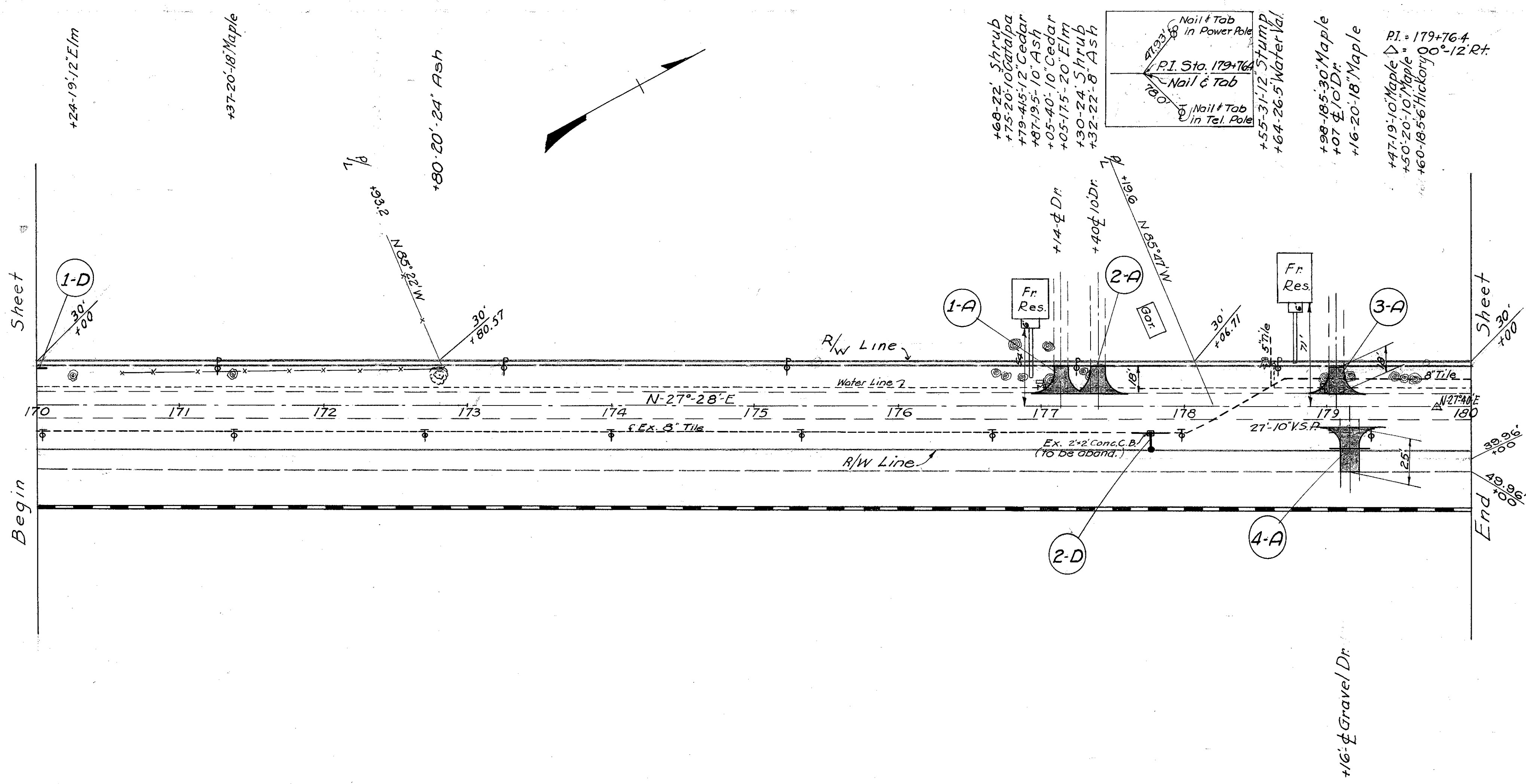
BM Sta. 165+73  
N.E. Cor. Porch floor 5' Lt.  
Elev. 977.92



Excavation	941	Cu. Yds.
Embankment	689	Cu. Yds.
Emb. + 20%	827	Cu. Yds.

STA. 160+00 to STA. 170+00

DIVISION: 2 OHIO F-558 (11)  
 TYPE FUNDS: 32  
 POST WAR: 103  
 DEL.-42 (12.21-18.72)  
 MRW.-42 (0.00-1.11)

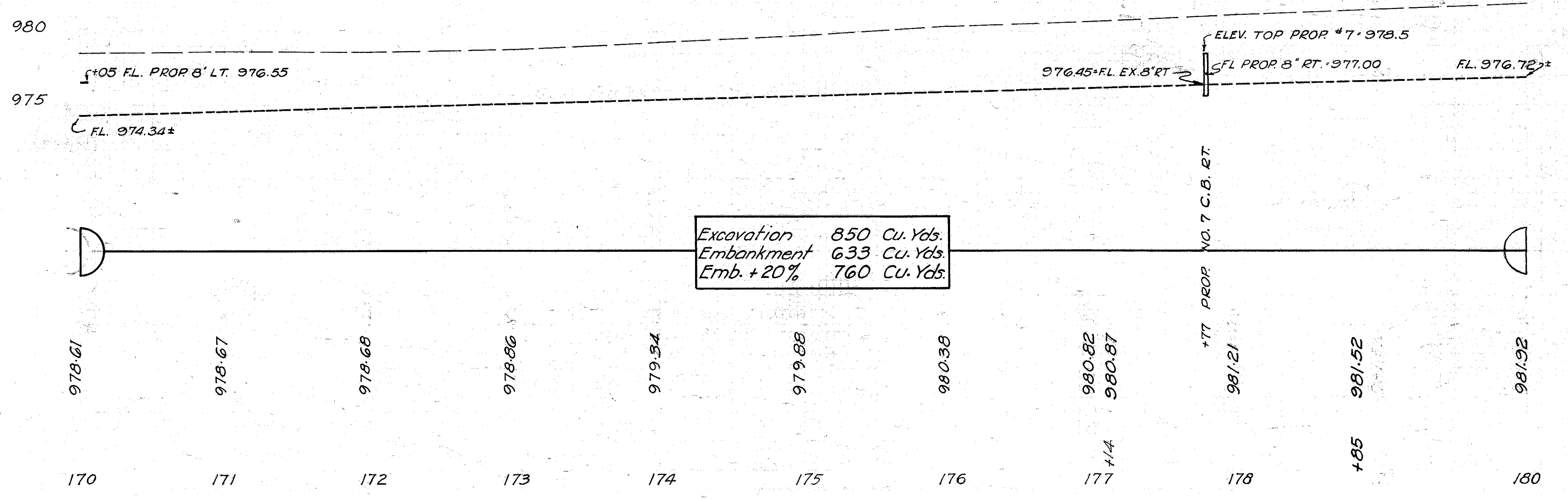


REF. NO.	STATION		ROADWAY					DRAINAGE		REMARKS
	FROM	TO	I-3 Pipe Lin. Ft.	I-5 Pipe Spec. for I-3 Pipe 8" x 8" T Each	I-8 Catch Basins No. 7 Each	I-16 Inlets Abandoned Each	E-12 Pipe Rem. Disposed Lin. Ft.	L-10 Sodding Sq. Yds.		
1-D	170+00	170+05	5					5		
2-D	177+77		24	1	1	1	8	5	Connect Prop 8" to #7 + Ex. 8"	
<b>TOTALS</b>			29	1	1	1	8	10		

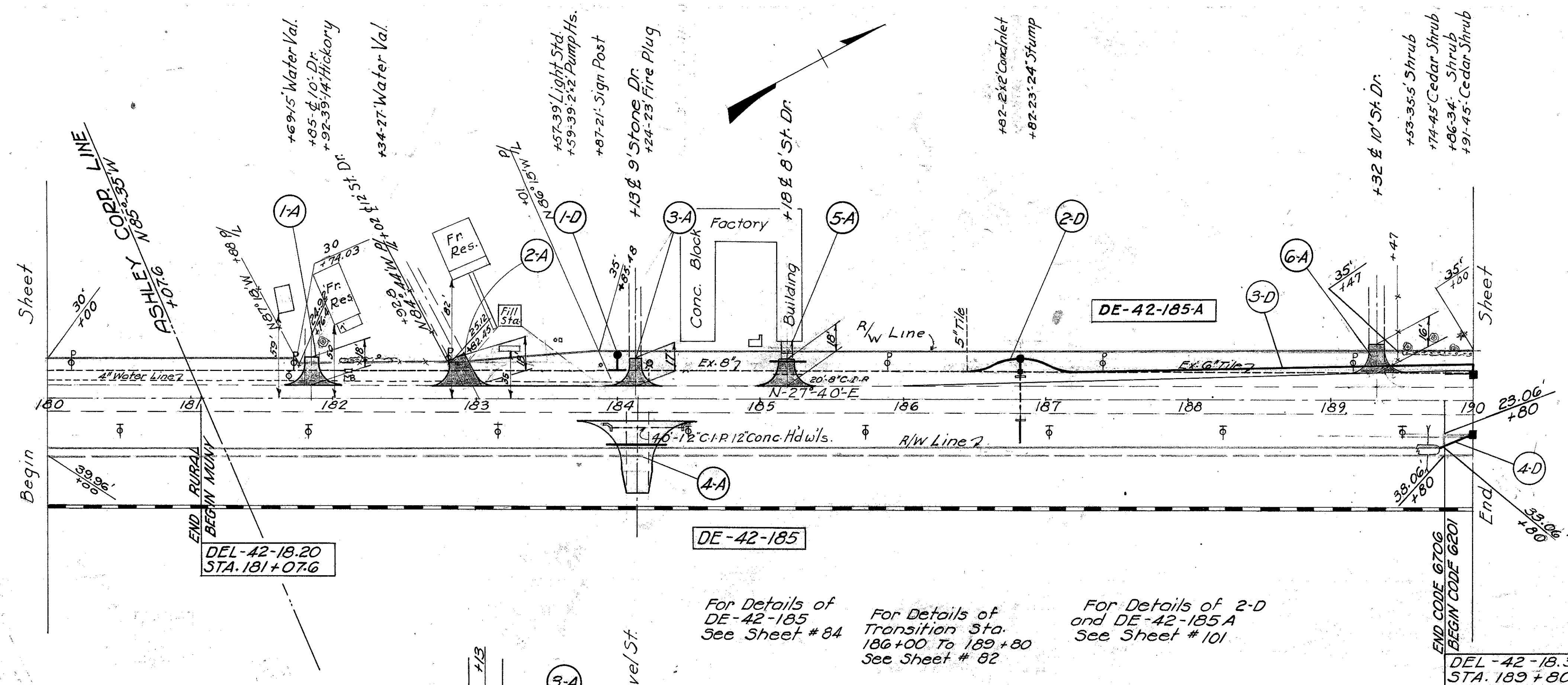
REF. NO.	STATIONS	SIDE	DRIVES AND APPROACHES			
			I-17 Aggregate 6" thick Sq. Yds.	I-1 Pipe For Driveways 12" Lin. Ft.	E-12 Pipe Rem. Disposed 10" Lin. Ft.	L-10 Sodding Sq. Yds.
1-A	177+14	Lt.	31			
2-A	177+40	Lt.	31			
3-A	179+07	Lt.	31			
4-A	179+16	Rt.	56	36	27	10
<b>TOTALS</b>			149	36	27	10

REMOVAL OF TREES & STUMPS			
STATION	SIDE	SIZE & KIND	NUMBER
178+55	Lt.	12" Stump	1
<b>TOTAL</b>			1

BM Sta. 178+80  
 S.E. Cor. Porch Floor 65'-Lt.  
 Elev. 984.37



STA. 170+00 to STA. 180+00



STRUCTURES - 20' SPAN & UNDER									
STRUCTURE NO.	STATION	PRESENT STRUCTURE			PROPOSED STRUCTURE			SHEET NO.	REMARKS
		TYPE	SIZE	LENGTH	DISPOSITION	TYPE	SIZE		
DE-42-185A	186+82	Pipe	12"	30'-0"	Extend	Pipe	12"	28'-0"	101
DE-42-185	184+15 RA	Pipe	12"	40'-0"	Remove	Pipe	12"	48'-0"	84

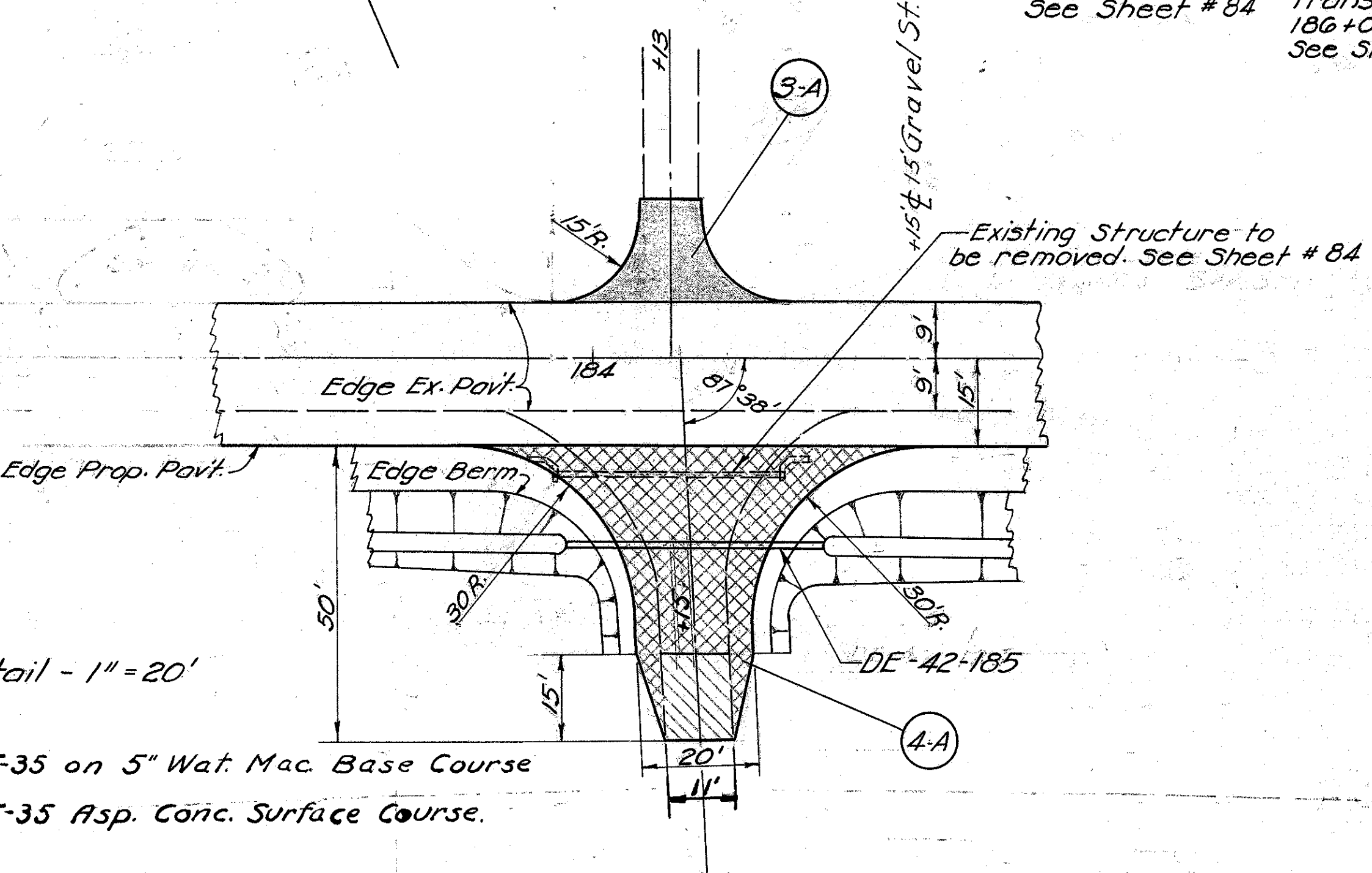
DRIVES AND APPROACHES														
REF. NO.	STATION	SIDE	I-17 Aggregate 6" thick		I-1 Pipe For Driveways 10'		E-12 Pipe Rem Sodding # Disposals		L-10 Sodding		T-35 Asp. Conc. Surface Course		B-20 5" Wat. Mac. Base Course	
			Sq. Yds.	Lin. Ft.	Lin. Ft.	Sq. Yds.	Cu. Yds.	Sq. Yds.						
1-A	181+85	Lt.	31											
2-A	183+02	Lt.	35											
3-A	184+13	Lt.	31											
4-A	184+15	Rt.								8.33	139.1			
5-A	185+18	Lt.	31	26	20	10								
6-A	189+32	Lt.	29											
TOTALS			157	26	20	10	8.33	139.1						

For Details of DE-42-185 See Sheet # 84  
 For Details of Transition Sta. 186+00 To 189+80 See Sheet # 82  
 For Details of 2-D and DE-42-185 A See Sheet # 101

DEL-42-18-20 STA. 181+07.6

DEL-42-18-36 STA. 189+80

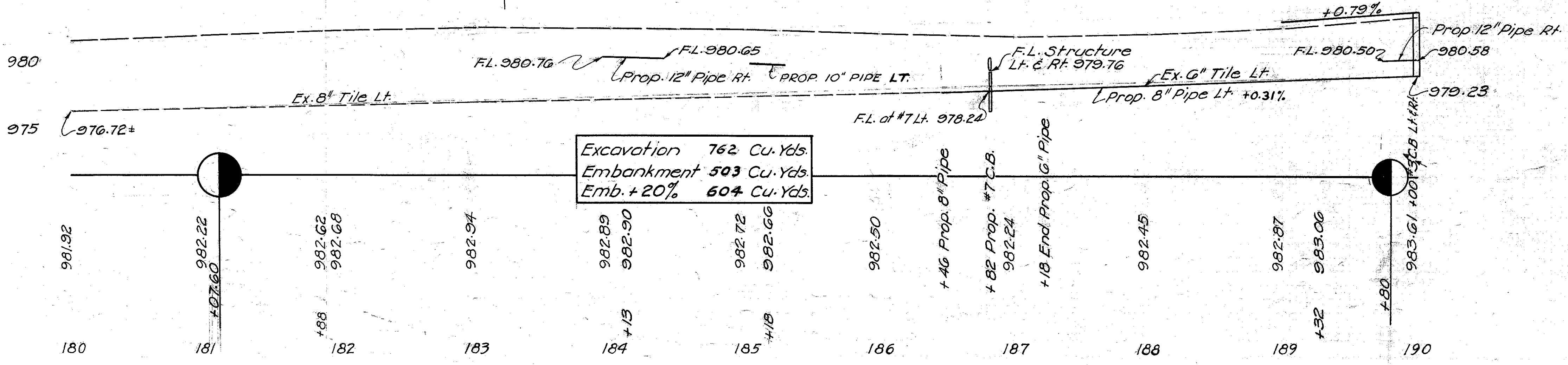
REF. NO.	STATION	SIDE	ROADWAY						DRAINAGE				REMARKS	
			I-3 Pipe Lin. Ft.		E-12 Pipe Remove & Dispose Lin. Ft.		I-5 Pipe Spec. for I-3 Pipe		I-8 Catch Basin Each		I-16 Inlets Abandoned			L-10 Sodding Sq. Yds.
			CODE 6706	CODE 6201	CODE 6201	CODE 6706	CODE 6201	CODE 6201	CODE 6201	CODE 6201	Each	Each		
1-D	184+00	Lt.	24					12	1	1		5	Connect to #7 C.B. # Ex. 8" Tile	
2-D	186+82	Lt.	40					36	1	1			Connect to Ex. 8" Tile # #7 C.B.	
3-D	186+82	Lt.	298	24			20	298	1	1			Connect to #7 C.B. Back & #3 C.B. Ahead	
4-D	189+75	Rt.	4				20			1		5	Connect to #3 C.B.	
TOTALS			362	4	24	20	20	298	48	2	2	2	1	10



Detail - 1" = 20'  
 2" T-35 on 5" Wat. Mac. Base Course  
 2" T-35 Asp. Conc. Surface Course.

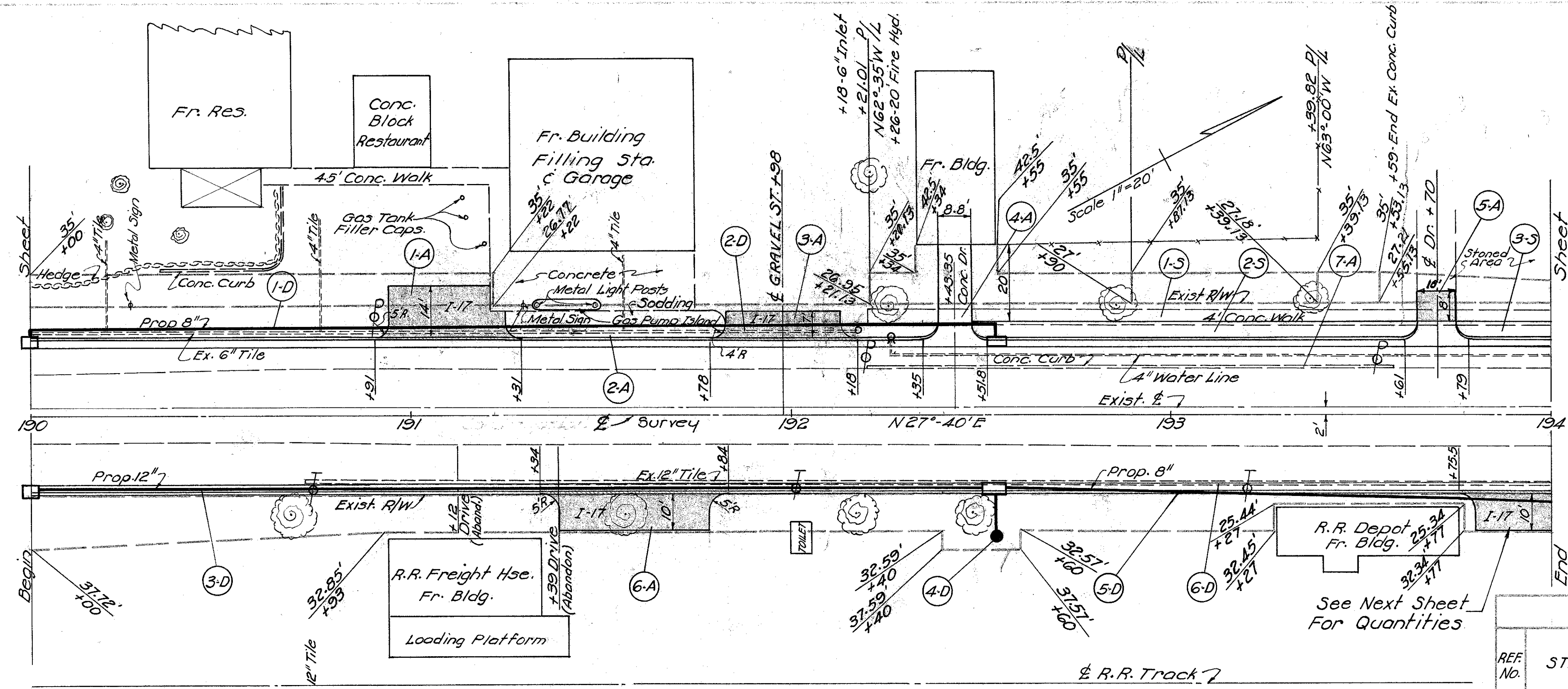
NOTE: - All Quantities shown in these tables are within the municipality of Ashley, and unless otherwise indicated are all within Code # 6706.

REMOVAL OF TREES & STUMPS			
STATION	SIDE	SIZE & KIND	NUMBER
186+82	Lt.	24" Stump	1
184+18	Lt.	24" Stump	1
TOTAL			2



STA. 180+00 to STA. 190+00

DEL-42-(12.21-18.72)  
MRW-42-(0.00-1.11)



### APPROACHES & CURB

REF. No.	STATION		SIDE	T-70 PORTLAND CEMENT CONC. PAVT. VAR. THICK. SQ. YDS.	I-12 DUCT FOR TYPE 2 CURB & GUTTER LIN. FT.	I-17 6" AGGREGATE SQ. YDS.	DEPRESS. CURB LIN. FT.	E-8 REMOVE & DISPOSE OF EXIST. CURB LIN. FT.	L-10 SODDING SQ. YDS.	E-8 REMOVE & DISPOSE OF EX. DRIVE PAVEMENT SQ. YDS.
	FROM	TO								
1-A	190+91	191+31	Lt.			46.66	40			
2-A	191+26	191+82	Lt.						48	
3-A	191+78	192+18	Lt.			23.34	40			
4-A	192+35	192+51.8	Lt.	28.55	16.80					16.30
5-A	193+61	193+79	Lt.	10.21	18.00	8.90				
6-A	191+34	191+84	Rt.			33.33	50			
7-A	192+20	193+59	Lt.					139.0		
TOTALS				38.76	34.80	112.23	130	139.0	48	16.30

### ROADWAY DRAINAGE

REF. No.	STATION		SIDE	I-2 PIPE FOR STORM SEWER 12" 8"	I-3 PIPE FOR ROADWAY DRAINAGE 6"	I-5 PIPE SPECIALS EACH 8"x80" 4"x8" BEND TEE	I-8 CATCH BASINS EACH #7 #3-A	I-16 INLETS ABANDONED EACH	E-8 REMOVE & DISPOSE OF EXIST. TILE LIN. FT.	L-10 SODDING SQ. YDS.	REMARKS			
	FROM	TO												
1-D	190+00	192+54	Lt.	258							Connect to #3-A Ahead & Back			
2-D	190+00	192+18	Lt.			1	3			218				
3-D	190+00	192+54	Rt.	252							Connect to #3-A Ahead & Back			
4-D	192+54	194+00	Rt.		11		1			5	Connect to #7CB & #3-A			
5-D	192+54	194+00	Rt.	146							Connect to #3-A C.B.			
6-D	190+72	194+00	Rt.						328					
TOTALS				252	404	11	1	3	1	2	1	328	218	5

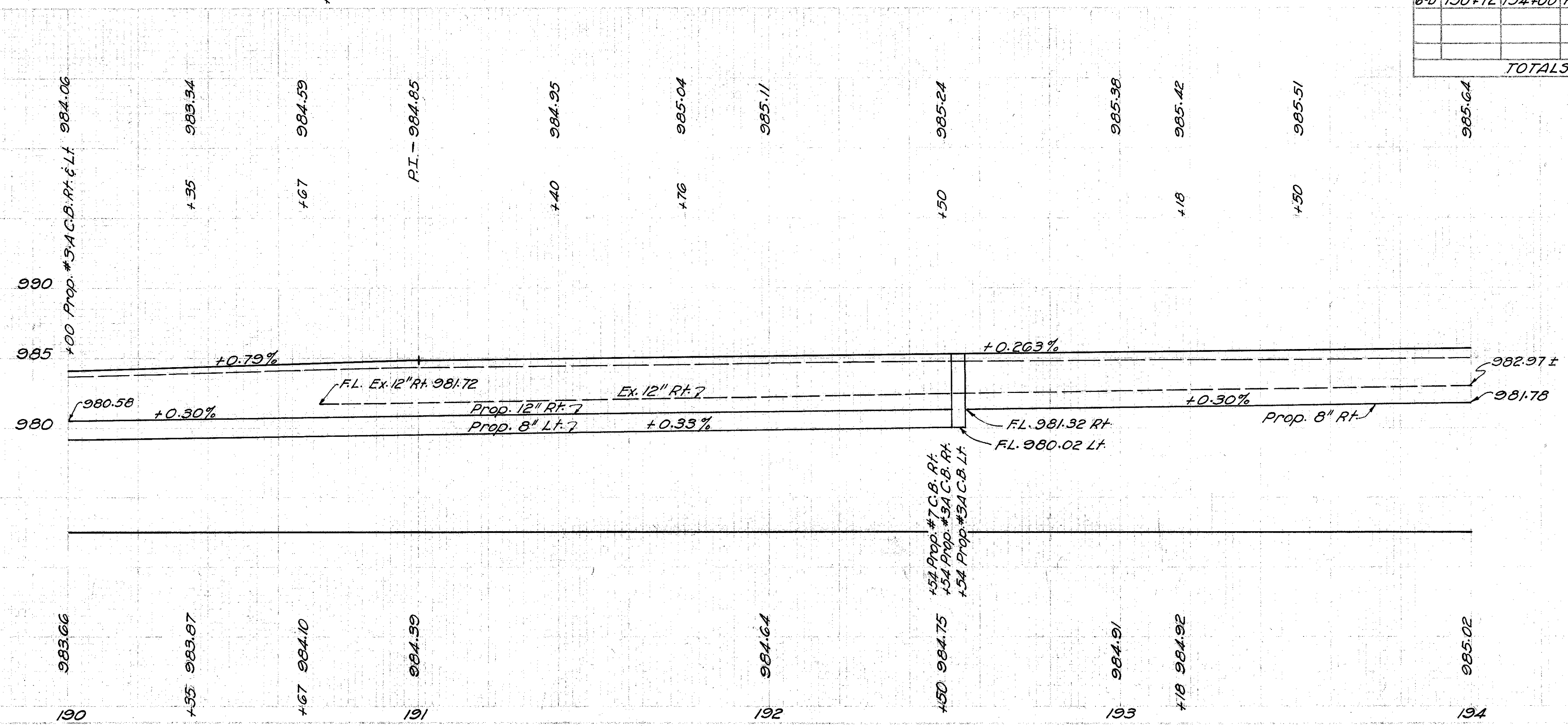
NOTE:-  
The proposed R/W Lines as shown on this sheet are dimensioned from the existing &.

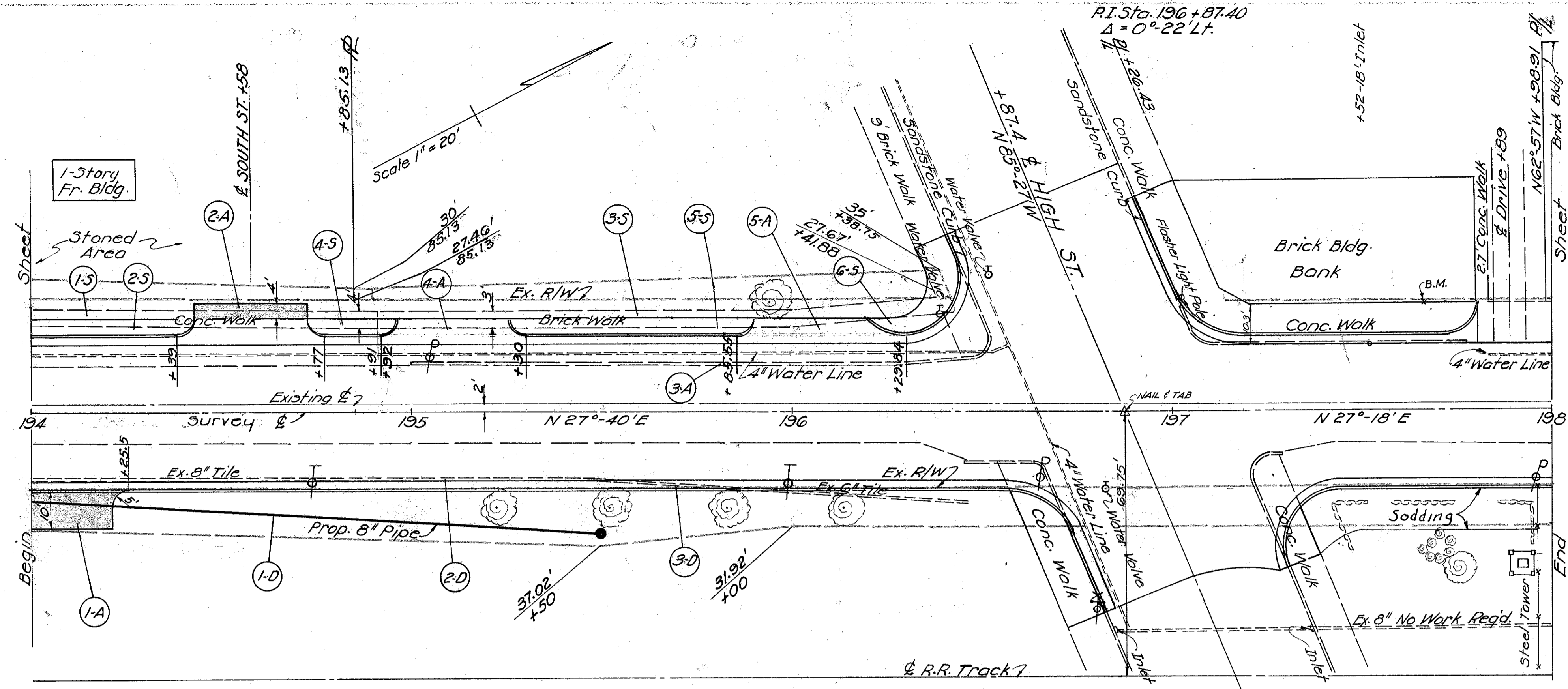
### SIDEWALKS

REF. No.	STATION		SIDE	E-8 REMOVAL & DISPOSAL OF EXIST. SIDEWALK SQ. FT.	I-13 4" CONCRETE SIDEWALK CLASS 'C' SQ. FT.
	FROM	TO			
1-S	192+20	194+00	Lt.	720.00	
2-S	192+47.8	193+65	Lt.		465.74
3-S	193+75	194+00	Lt.		96.56
TOTAL				720.00	562.30

### REMOVAL OF TREES & STUMPS

STATION	SIDE	SIZE & KIND	NUMBER
191+56	Rt.	36" Maple	1
TOTAL			1





### APPROACHES & CURB

REF. No.	STATION		SIDE	T-70 PORTLAND CEMENT CONC. PAVT. VAR. THICK. SQ. YDS.	I-12 DEDUCT FOR TYPE 2 CURB & GUTTER LIN. FT.	I-17 6" AGGREGATE SQ. YDS.	DEPRESSED CURB LIN. FT.	E-8 REMOVE & DISPOSE EXISTING CURB LIN. FT.
	FROM	TO						
1-A	194+05		Rt.			33.33	50.0	
2-A	194+58		Lt.	24.21	38.0	13.33		
3-A	195+00	196+29.84	Lt.					129.84
4-A	194+92	195+30	Lt.	24.21	38.0			
5-A	195+85.55	196+29.84	Lt.	27.80	44.3			
TOTAL				76.22	120.3	46.66	50.0	129.84

### ROADWAY DRAINAGE

REF. No.	STATION		SIDE	E-12 REMOVE & DISPOSE EXIST. PIPE LIN. FT.	I-2 PIPE FOR STORM SEWER LIN. FT.	I-8 CATCH BASINS EACH #7	L-10 SODDING SQ. YDS.	REMARKS	
	FROM	TO							
1-D	194+00	195+50	Rt.		149	1	5	Connect to #7 C.B.	
2-D	194+00	195+48	Rt.	148					
3-D	195+48	196+46	Rt.	96					
TOTAL				148	96	149	1	5	

### SIDEWALKS

REF. No.	STATION		SIDE	E-8 REMOVE & DISPOSE OF EXIST. SIDEWALK SQ. FT.	I-13 4" CONC. SIDEWALK CLASS 'C' SQ. FT.
	FROM	TO			
1-S	194+00	194+91	Lt.	364.00	
2-S	194+00	194+43	Lt.		168.56
3-S	194+91	196+29.84	Lt.	416.52	
4-S	194+73	194+96	Lt.		85.12
5-S	195+26	195+89.55	Lt.		247.32
6-S	196+19.55	196+29.84	Lt.		21.00
TOTAL				780.52	522.00

Note:  
The proposed R/W Lines as shown on this sheet are dimensioned from the existing  $\phi$ .

For Details of High St. Intersection See Sheet #87

B.M. Sta. 197+66  
28.6' Lt. of  $\phi$  &  
13.6' So. of Northeast  
Cor. of Bank Bldg.  
X mark on foundation.  
Elev. 988.64

