

### STORM SEWERS

REF NO.	STATION FROM	STATION TO	PIPE I-2	PIPE UNDER I-2	PIPE UNDER I-5	18" ALL-PURPOSE REMOVED	5-12" INLETS	REMARKS						
			8" 10" 12"	8" 12" 15"	2-2" 1 1/2" 2"	NO. YDS.	NO. YDS.							
1.5	185+26	-	12"					Connected to existing						
2.5	185+28	-	12"					and to structure						
3.5	190+00	190+42	12"					Basin of 190+42						
4.5	190+42	-						Basin of 190+42						
5.5	190+72	192+43	12"					Connected to existing						
6.5	192+07	192+43	12"					Basin of 192+43						
7.5	192+43	192+54	12"					Connect to 6.5 and						
8.5	192+54	-	12"					Basin of 192+54						
9.5	192+54	195+00	12"					Manhole at 192						
10.5	193+02	-	12"											
11.5	193+77	-	12"											
TOTALS			12	16	260	36	154	2	3	1	1	208	32	5

### MEDIANS AND MEDIAN PAVT.

STATION FROM	STATION TO	5'-20" 4" W.B. MAC. BASE 50 YDS.	7'-30" PRIME COAT GAL.	1'-60" 2 1/2" ASPHALTIC CONC. SUR. 50 YDS.	1'-71" 5" CONC. PAVTMENT 50 YDS.	1'-12" TYPE 'D' CURB LIN. FT.	DEDUCT TYPE '5A' CURB LIN. FT.	6" CONCRETE PAVTMENT SQ.YDS.
185+00	185+44	51.3	13	51.3				
190+25	192+01.38					176.38		
192+01.38	192+42.38				10.76			
192+42.38	193+48.18					132.50		
193+48.18	194+01.88				4.45			
194+01.88	195+00					28.12		
TOTALS		51.3	13	51.3	15.21	407.0	44	46

### INTERSECTION & TRANSITION

STATION FROM	STATION TO	1'-71" 5" REIN. CONC. PAVT. SQ.YDS.	5'-20" W.B. MAC. BASE 50 YDS.	7'-30" PRIME COAT 50 YDS.	1'-60" 2 1/2" ASPHALTIC CONC. SUR. 50 YDS.	1'-71" 5" CONC. PAVTMENT 50 YDS.	1'-12" TYPE 'D' CURB LIN. FT.	DEDUCT TYPE '5A' CURB LIN. FT.	6" CONCRETE PAVTMENT SQ.YDS.
INTER 185+04.35						145.75	145.75	36	
TRANS 185+75	190+25		150.2	1425.0	1425.0		1425.0	356	
INTER 192+25.38						173.11	173.11	43	40.81
TOTALS			150.2	1425.0	1425.0	318.86	1743.86	435	40.81

### DRIVES & ALLEYS

REF NO.	STATION	SIDE	T-70 6" CONC. 50 YDS.	I-17 AGGREGATE 50 YDS.	DEPRESSED CURB LIN. FT.	T-11 STABILIZED SP. YDS.	12" PIPE FOR DRIVES LIN. FT.	
1A	191+92	LT.	5.21	26.1	18.0			
2A	192+37	LT.	5.21	26.1	18.0			
3A	193+17	RT.	14.61		18.0			
4A	193+20	LT.	6.10		20.0			
5A	193+20	RT.	6.10		20.0			
6A	194+24	RT.	5.21		18.0			
7A	186+12	LT.			20.0	15.9	20	
TOTALS			42.44	122.5	112.0		15.9	20

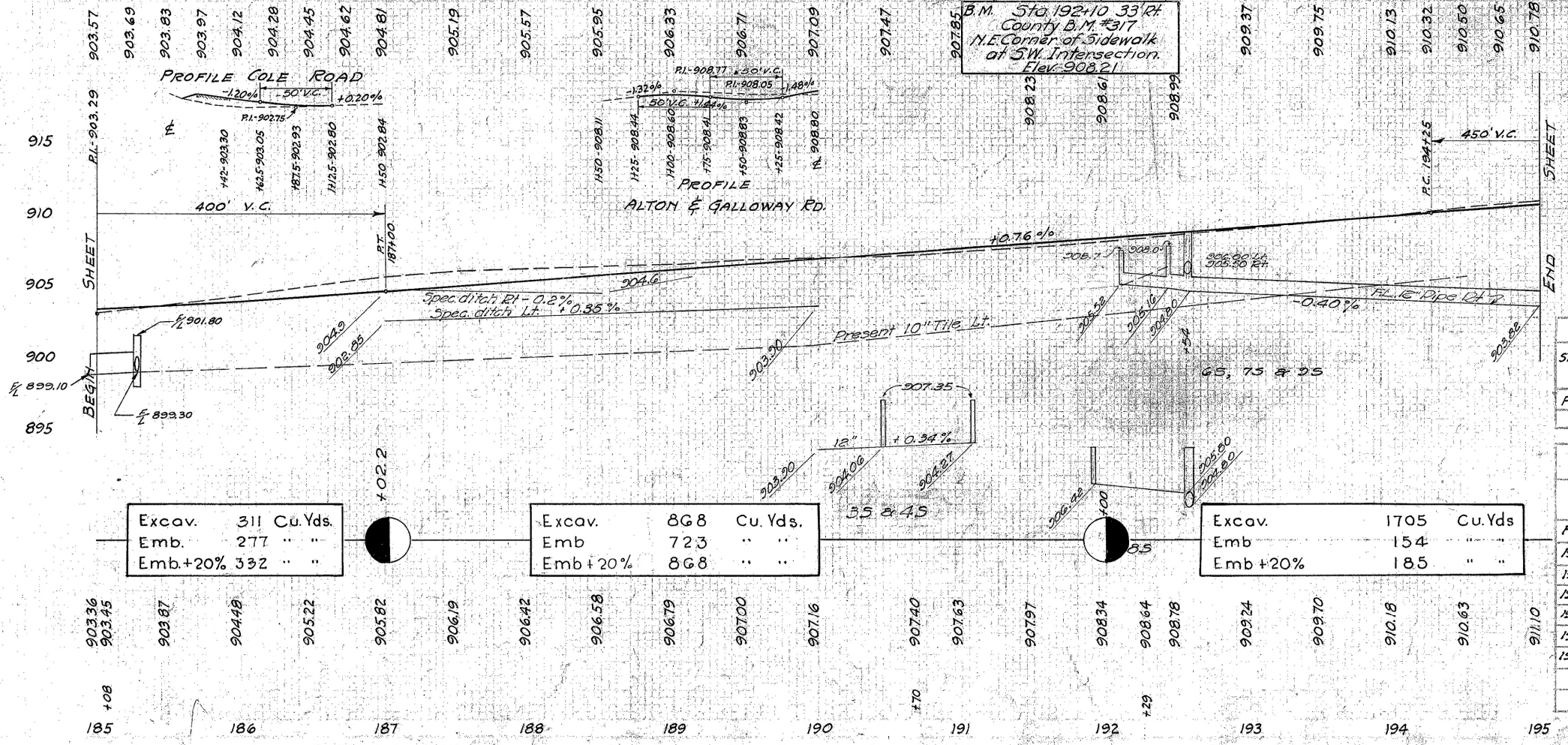
STATION 187+06 TO 195+00 50.5 Lin. Ft. 5" Traction Rail To be removed  
STATION 185+04.35 50.5 Lin. Ft. 5" Traction Rail To be removed.

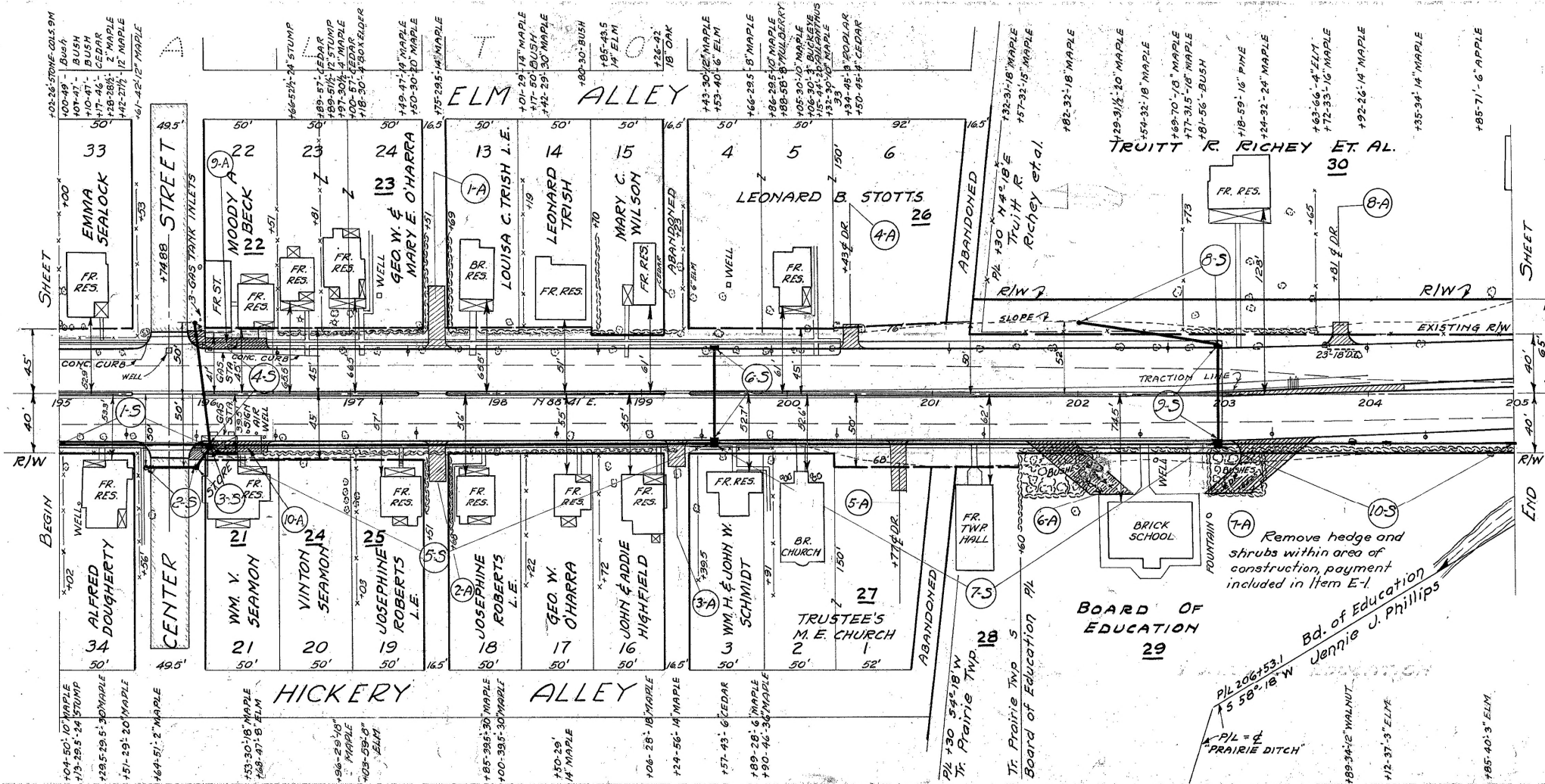
### STRUCTURES - 20' SPAN AND UNDER

STRUCTURE NO.	STATION	PRESENT STRUCTURE TYPE SIZE	PROPOSED STRUCTURE TYPE SIZE LENGTH	SHEET NO.	REMARKS
FR-40-30	185+04.35	PIPE 18" 33'	REMOVE PIPE 18" 38'-0"	149	SIDE RD. CULVERT

### REMOVAL & DISPOSAL OF EXISTING CURBS & SIDEWALKS

STATION FROM	STATION TO	5' E-B CONCRETE CURB LIN. FT.	5' E-B CONCRETE WALKS SQ. FT.
191+33	192+14	89	
193+13	193+48	35	
194+50	195+00	50	
194+38	195+00		243
191+42	192+00		268
192+70	195+00		884
TOTALS		174	1,400





### STORM SEWERS

REF. NO.	STATION	PIPE I-2	PIPE UNDER		REMARKS	I-8 No. M.F.
			PIPE I-2	PIPE I-8		
1-S	125+00	126+02	10" 12"	15" 18"		
2-S	125+54	125+92		34	Basin at 125+55	
3-S	125+92	126+02	18		Basin at 125+93	
4-S	125+93	126+02	X	84	Basin at 125+93	
5-S	126+02	122+48		342	Manhole at 126+04	
6-S	122+48		X	62	Basin at 122+50	
7-S	122+48	202+24		342	Manhole at 122+50	
8-S	202+00	202+24	96		Basin at 202+00	
9-S	202+24		X	62	Basin at 202+26	
10-S	202+24	203+00		203	Manhole at 202+26	
TOTALS			114	102 342 544 34 203 1 2 3 2		

### INTERSECTION & TRANSITION

STATION	SIDE	F-71 BEIN. CONC. PAVT. SQ. YDS.		B-20 W.C. M.M. BASE SQ. YDS.		TYPE - 2 A CURB LIN. FT.		TYPE - E COM. CURB AGGREGATE LIN. FT.		I-17 DUCT & GUTTER LIN. FT.		T-60 ASPH. CONC. SURFACE SQ. YDS.		T-70 ASPH. CONC. SURFACE SQ. YDS.	
		7" 9"	7" 9"	7" 9"	7" 9"	75.40	100.0	53.0	829.11	647.2	647.2	647.2	647.2		
INTER. 125+74.88	LT.	81.62													
TRANS. 203+00	LT.		122.5	647.2	647.2										
TOTALS		81.62	122.5	647.2	647.2	75.40	100.0	53.0	829.11	647.2	647.2	647.2	647.2	647.2	647.2

### MEDIANS & MEDIAN PAVEMENT

STATION	SIDE	F-71 - 5" BEIN. CONC. PAVT. SQ. YDS.		I-12 TYPE - B CONCRETE CURB LIN. FT.		T-60 ASPHALTIC CONC. SQ. YDS.		T-30 PRIME COAT GAL.		DEDUCT 5-A CURB LIN. FT.
		7" 9"	7" 9"	75.40	100.0	53.0	829.11	647.2	647.2	
125+00	RT.			50.88						
125+30.88	RT.	10.76								
125+39.88	RT.		149.00							
127+47.88	RT.	4.54								
127+67.00	RT.		146.50							
129+14.38	RT.	4.54								
129+34.38	RT.		365.62							
203+00	LT.			39.2						65
TOTALS		19.84	712.00	39.2						65

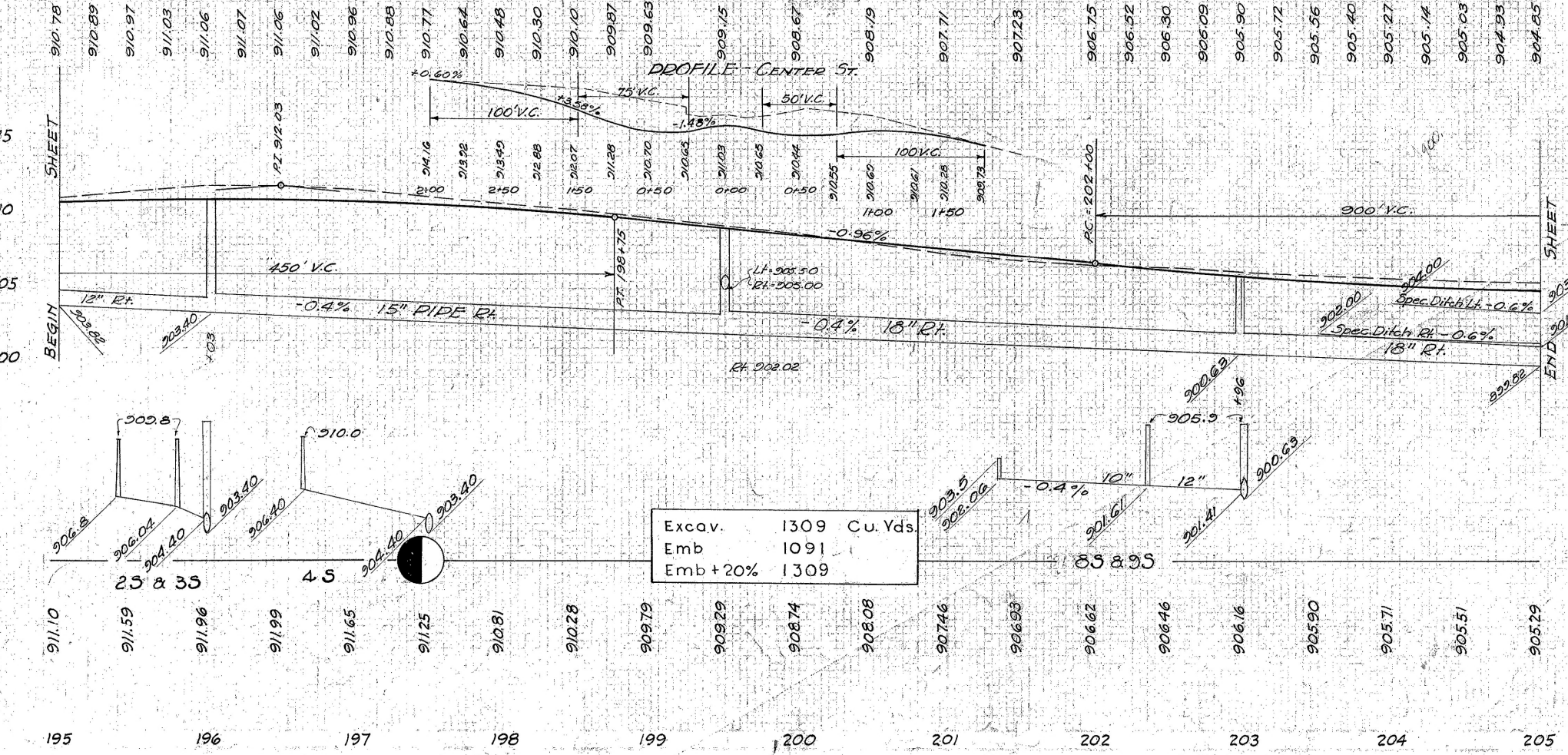
### DRIVES & ALLEYS

REF. NO.	STATION	SIDE	T-70 6" CONC. STABILIZED AGGREGATE SQ. YDS.		I-17 PIPE LIN. FT.		I-1 PIPE LIN. FT.		DEPRESSED CURB LIN. FT.
			6" CONC.	STABILIZED AGGREGATE	18"	12"			
10-A	126+15.38	RT.	38.8					36.0	
1-A	127+40	LT.	6.10		51.3			20.0	
2-A	127+60	RT.	6.10		31.3			20.0	
3-A	129+25	RT.	6.10		18.0			20.0	
4-A	200+43	LT.	5.21		12.2			18.0	
5-A	200+77	RT.	5.21		31.7			18.0	
6-A	201+43.54	RT.	15.62		108.4			45.0	
7-A	203+82.25	RT.		103.6	355		42		
8-A	203+81	LT.		15.9	6.7				
9-A	126+15.38	LT.	38.8					36.0	
TOTAL			121.34	119.5	295.1	42	213.0		

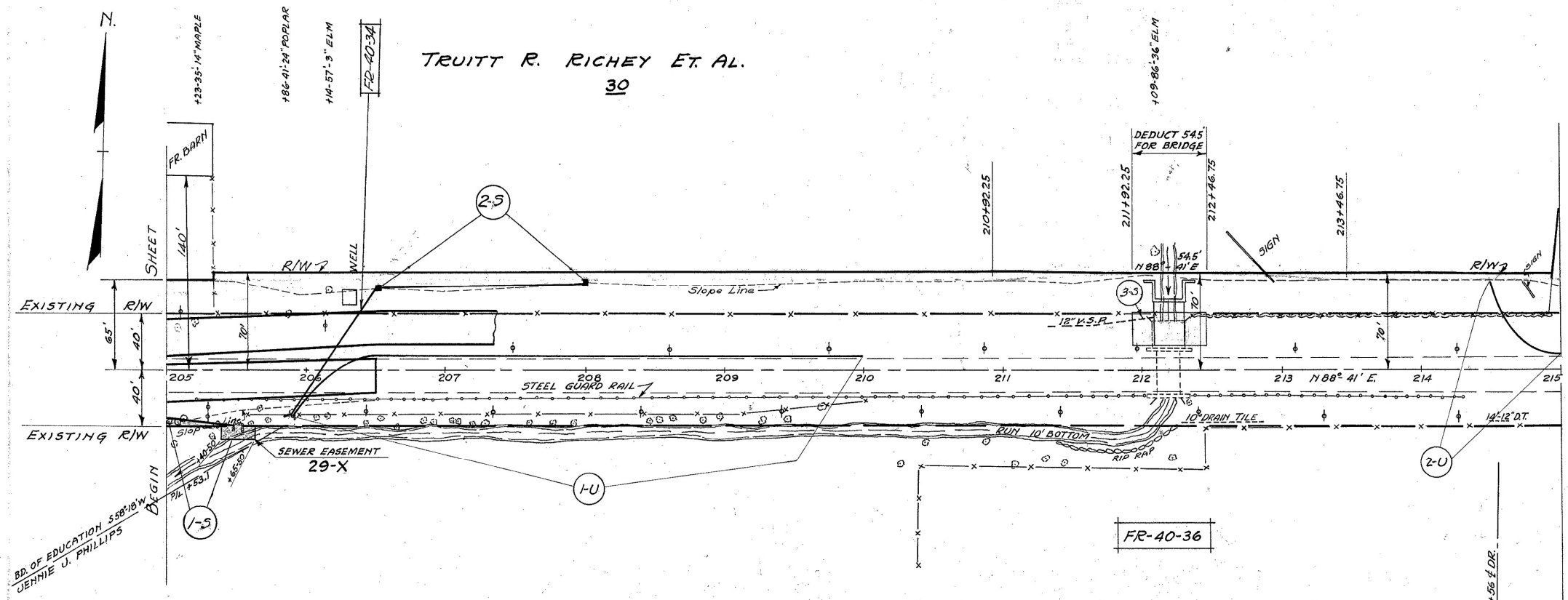
### REMOVAL & DISPOSAL OF EXISTING CURBS & SIDEWALKS

STATION	SIDE	E-8 CONCRETE CURB WALKS SQ. FT.	
		E-8	E-8
125+00	RT.	240	
125+00	LT.		248
125+00	LT.	135	
126+20	LT.	61	
129+38	LT.	112	
126+20	LT.		1676
126+40	RT.		2544
126+55	RT.		67
TOTAL		308	4,775

Station 125+00 to 204+00  
1,800 Lin. Ft. 5" Traction Rails  
To be Removed.



TRUITT R. RICHEY ET. AL.  
30



REF. NO.	STATION FROM	STATION TO	SIDE	PIPE I-2	PIPE UNDER PAVT.	T-3 C.B. T-2	12" W. Pipe Sq. Yds.	REMARKS
1-3	205+00	205+50	RT.	8" 12" 18"			7	Build riprap basin 40 ft.
2-3	206+47	208+01	Lt.	152			2	T-2 C.B. Sta 206+47 & Sta 208+01
3-3	212+00	212+10	Lt.			10		Extend through Abut.
TOTALS				152	50	10	2	7

STATION FROM	STATION TO	SIDE	TYPE	STEEL LIN. FT.
205+21	206+50	RT.		139
TOTAL				139

STATION	SIDE	SIZE	KIND
205+23	Lt.	14"	Maple
205+86	Lt.	24"	Poplar
Total			

STATION FROM	STATION TO	S	B-20	B-20	T-30	T-60	T-71-9"
		1	4" MAC.	4" MAC.	PRIME	ASPHALTIC	CONC. PAV'T.
		D	1ST. BASE	2ND. BASE	COAT	CONC. (2 1/2")	PAV'T.
		E	SQ. YDS.	SQ. YDS.	GALS.	LIN. FT.	SQ. YDS.
205+00	206+50	RT.	441.7	441.7	110	441.7	
205+00	206+50	Lt.					27.7
TOTALS			441.7	441.7	110	441.7	27.7

STRUCTURE NO.	STATION	EXISTING STRUCTURE	PROPOSED STR.	SHEET NO.	REMARKS
FR-40-34	206+15	PIPE 12" 88'	REMOVE	PIPE 12" 112'-0"	150
FR-40-36	212+19.5	ARCH 18' 4" SPAN	EXTEND	SLAB BR. 20' SPAN 49'-1/2" LT.	151

REF. NO.	STATION FROM	STATION TO	S	PIPE I-4	6" PIPE	REMARKS	
				6"	OUTLET		
				LIN. FT.	LIN. FT.		
1-U	205+90	210+00	Lt.	408	16	Outlet 205+90-RT.	
2-U	214+50	215+00	Lt.	68	16	Outlet 214+50-Lt.	
TOTALS				476	32		

