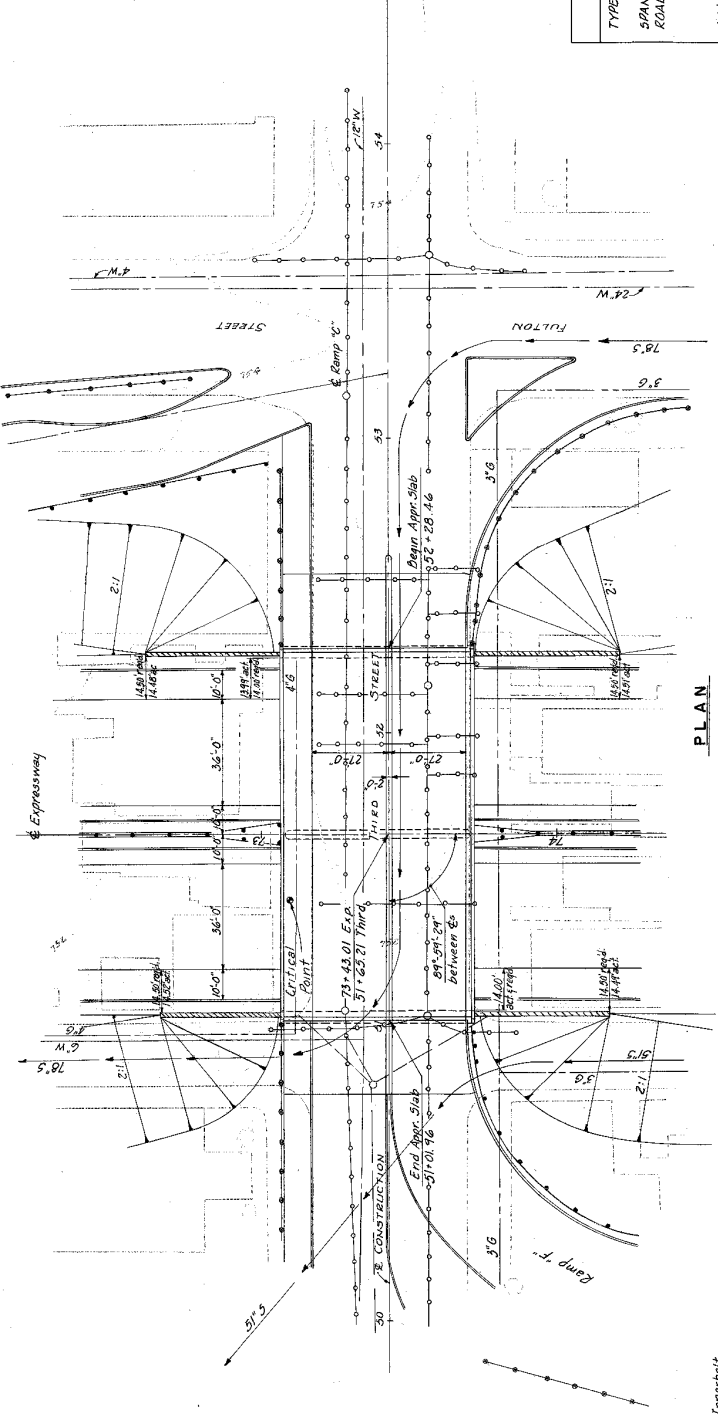


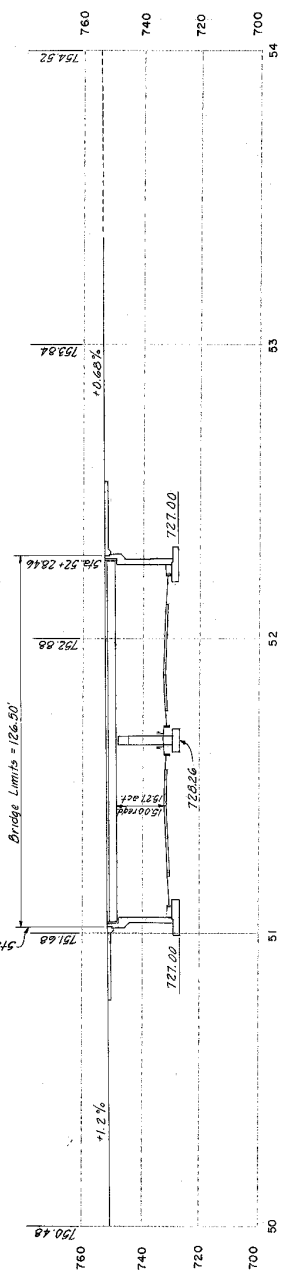
FRANKLIN COUNTY
 FRA - 40-12.82



PLAN

3rd St.
 Innerbelt
 PVI - 75+00
 50 V.C.
 Elev - 727.86
 Corr - 0.03
 P.G. - 793.20

PROPOSED STRUCTURE
 TYPE - Continuous steel beam with reinforced concrete deck and substructure.
 SPANS - 210'-0" bridge.
 ROADWAY - 24'-0" ff. curb with 2' concrete median, 10' sidewalk on West side, 2' safety curb on East side.
 FINISHES - Aluminum casting aluminum ceiling.
 LOADINGS - CF-400 (1997).
 WEARING SURFACE: 2" asphaltic concrete.
 SKEW: None.
 ALIGNMENT: Tangent.
 APPROACH SLABS: 25' long, see sheet 207.



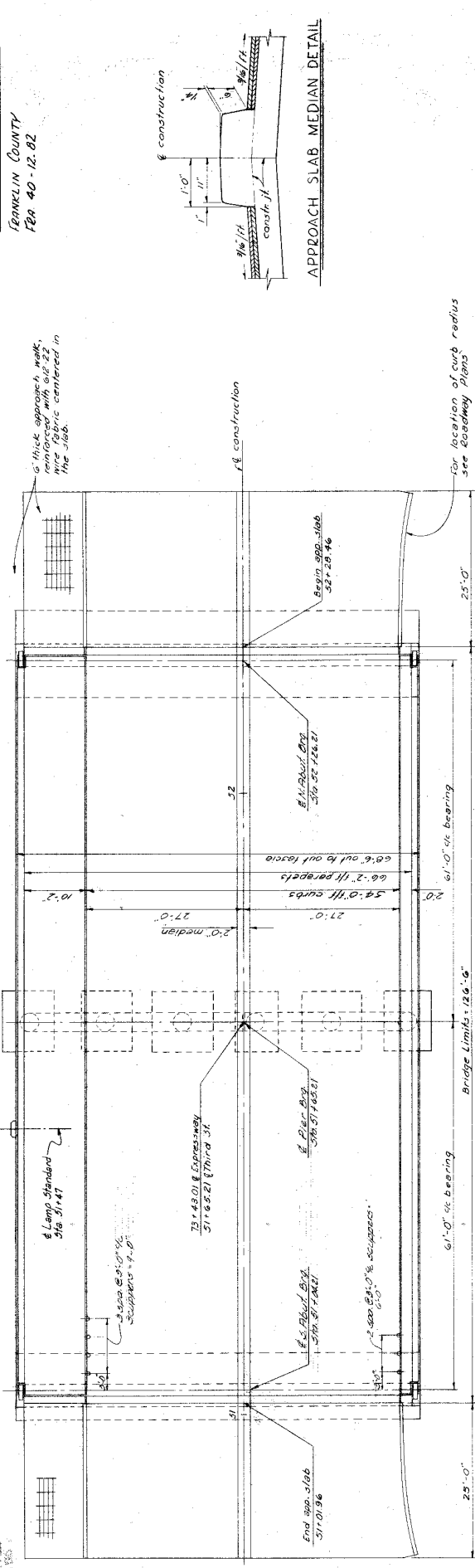
PROFILE

ALDEN E. NELSON & ASSOCIATES, LIMITED 10000 W. STATE ST. COLUMBUS, OHIO		DATE 7/2/02
DESIGNED BY R.E.M.	CHECKED BY R.E.M.	DATE 7/2/02
SITE PLAN		
BRIDGE NO. FRA - 40-1325		
SOUTH INNERBELT UNDER THIRD STREET		
FRANKLIN COUNTY	STA. 73+43.01	
T.W.	T.L.O.	H.T.

MICROFILMED
 SEP 34 1986

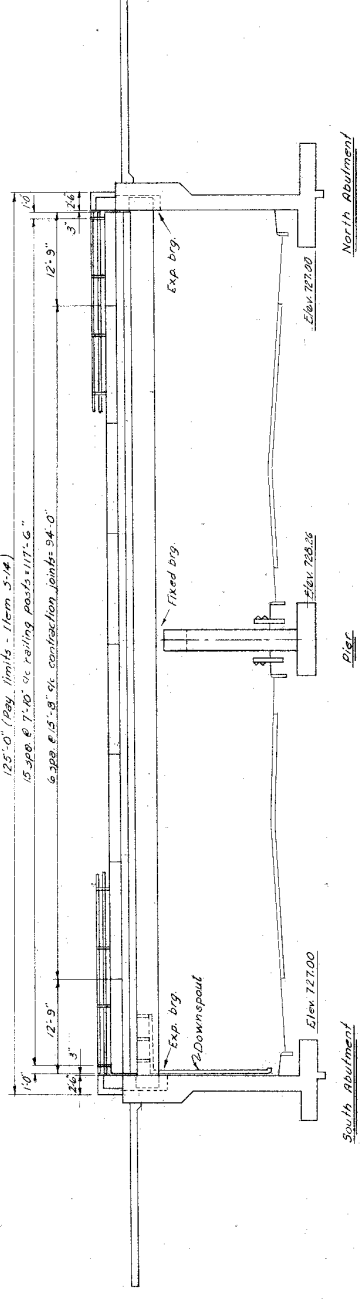
207
220

PROJECT NO.	2
STATE	OHIO
PROJECT	FRANKLIN COUNTY FRA 40-12-82



PLAN
(Dimensions not shown)

NOTES
CURBS: The curbs on the approach slab shall be transitioned to match the curbs on the roadway plans.
SUBWAY: APPROACH SLAB: The approach slabs and slabs are included with roadway quantities for standard drawing 22-154.

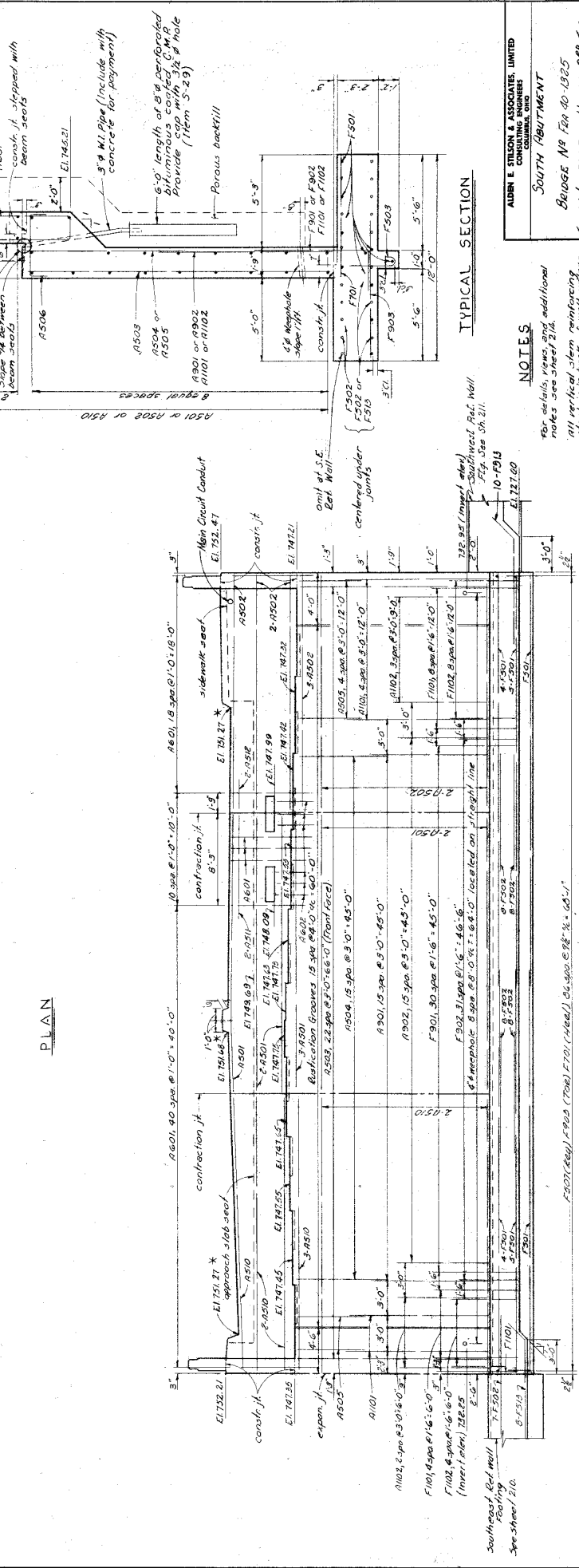
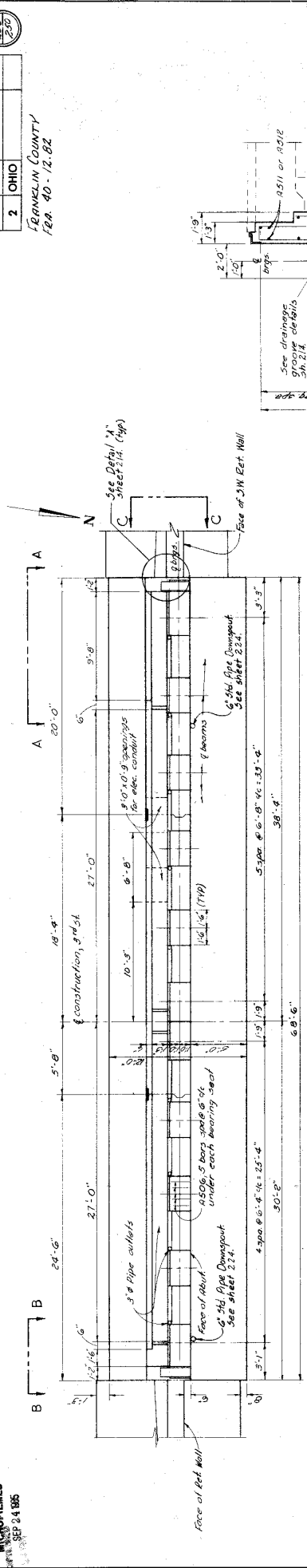


GENERAL ELEVATION

ALDEN E. STILSON & ASSOCIATES, LIMITED CONSULTING ENGINEERS COLUMBUS, OHIO	
GENERAL PLAN ELEVATION	
BRIDGE NO. FRA 40-12-82	
SOUTH INNERBELT UNDER 3 RD ST.	
FRANKLIN COUNTY STA 19+48.01	
DATE	DEVELOP
DESIGN	DESIGN
CHECK	DESIGN
DATE	12/15/82
BY	DEMUS



DATE	PROJECT
2 OHIO	
FRANKLIN COUNTY	
REQ. 40-12.82	



TYPICAL SECTION

DESIGNED BY	CHECKED	DATE
PM	JML	7-20-82
DRAWN BY	REVISIONS	
A.P.		
FRANKLIN COUNTY STR 79+02.01		
SOUTH INHERRETT UNDER 3 & S		
SOUTH INHERRETT UNDER 3 & S		
BRIDGE NO. FR 40-1825		
SOUTH INHERRETT UNDER 3 & S		
ALDEN E. STILTON & ASSOCIATES, LIMITED		
CONSULTING ENGINEERS		
COLUMBUS, OHIO		
SOUTH INHERRETT UNDER 3 & S		

NOTES
 For details, views, and additional notes see sheet 214.
 All vertical stem reinforcing shall be in back of wall unless otherwise noted.

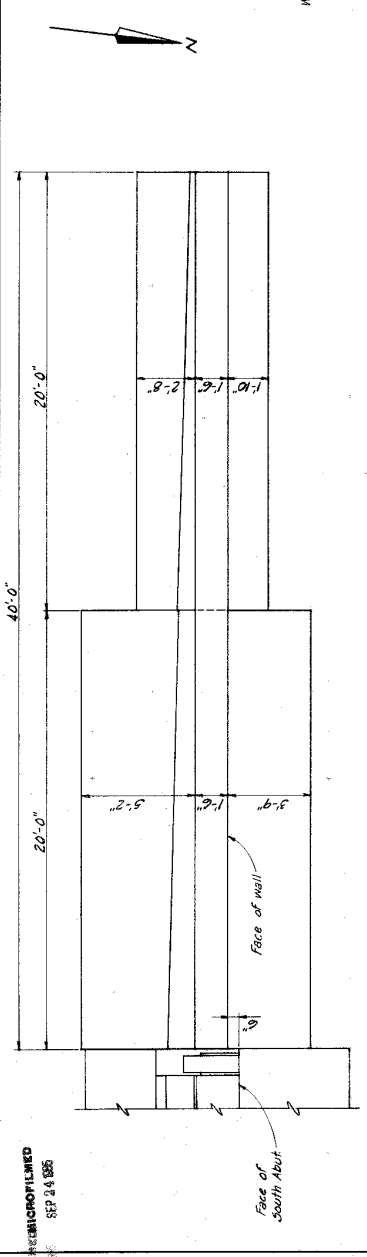
ELEVATION

MICROFILMED
 SEP 24 1985

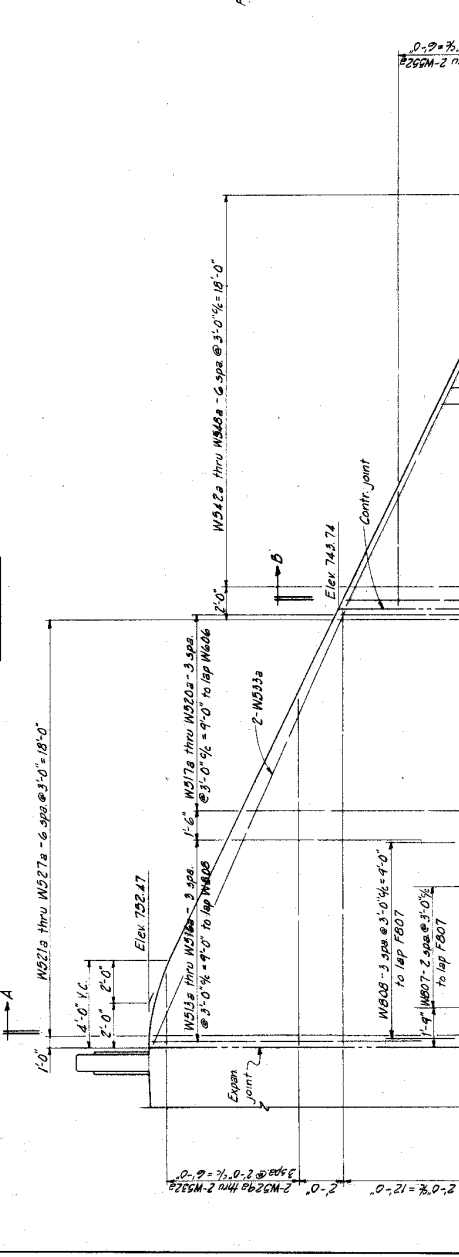
NO. OF SHEETS	2
DIVISION	OHIO
PROJECT	FRANKLIN COUNTY FRM-40-1202

FRANKLIN COUNTY
FRM-40-1202

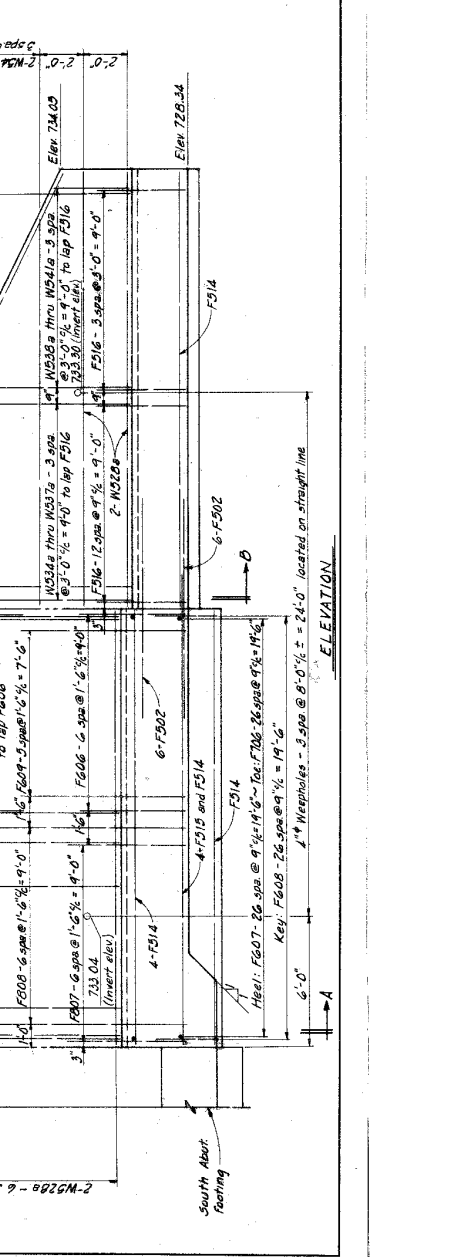
MICROFILMED
SEP 14 1985



SECTION A-A



SECTION B-B



ALDEN E. STILSON & ASSOCIATES, LIMITED
CONSULTING ENGINEERS
COLUMBUS, OHIO

SOUTHWEST RETAINING WALL
BRIDGE NR FRM-40-1325
SOUTH INNERBELT UNDER 3RD ST.
FRANKLIN COUNTY STA. 73+43.01

NO. OF SHEETS	4
DIVISION	OHIO
PROJECT	FRANKLIN COUNTY FRM-40-1202

NOTE
For common details and additional notes, see sheet 214.

SECTION A-A
SECTION B-B
F502 bars are centered under joint

PLAN
Elevation

Face of wall
Face of South Abut

South Abut
Reinforcing

Contr. Joint

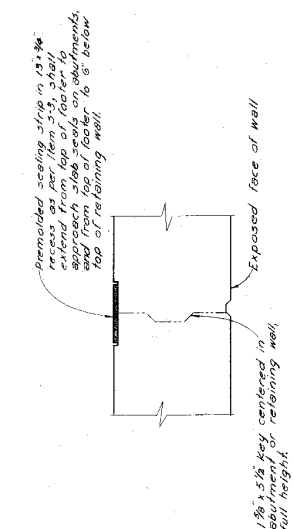
Even Joint

Reinforcing

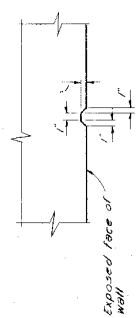
MICROFILMED
 SEP 24 1985
 MICROFILMED
 11/28/82

NO. OF SHEETS	DATE	PROJECT	DATE
2	OHIO		

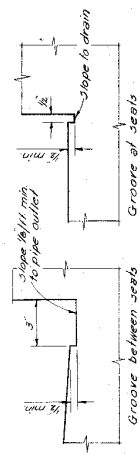
FRANKLIN COUNTY
 RA 40-12.82



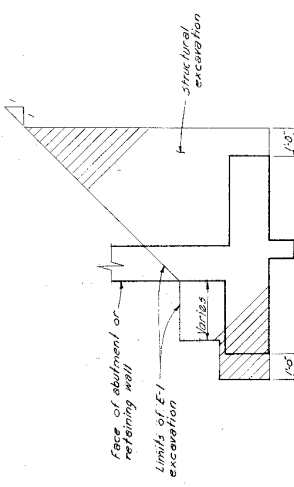
CONTRACTION JOINT DETAIL



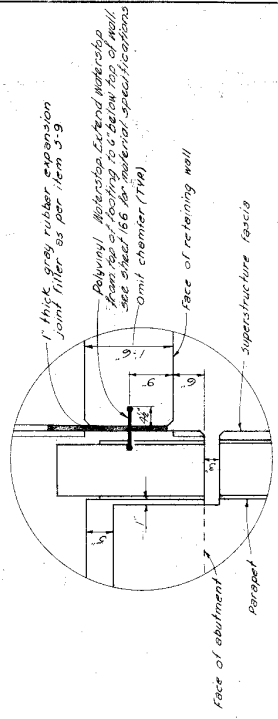
RUSTICATION GROOVE DETAIL



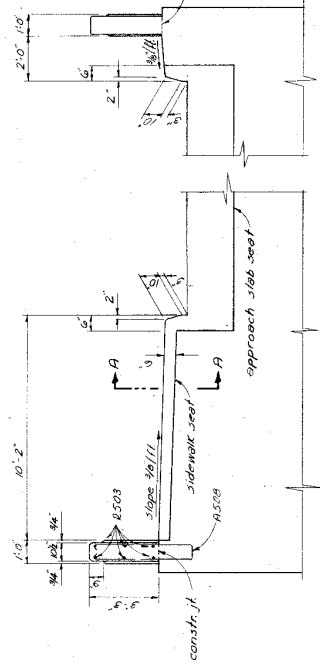
DRAINAGE GROOVE DETAILS



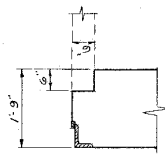
EXCAVATION DETAIL



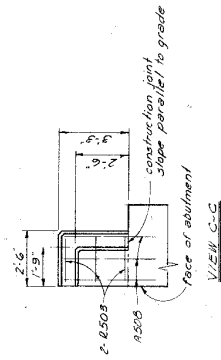
DETAIL A



VIEW B-B



SECTION A-A



VIEW C-C

NOTES

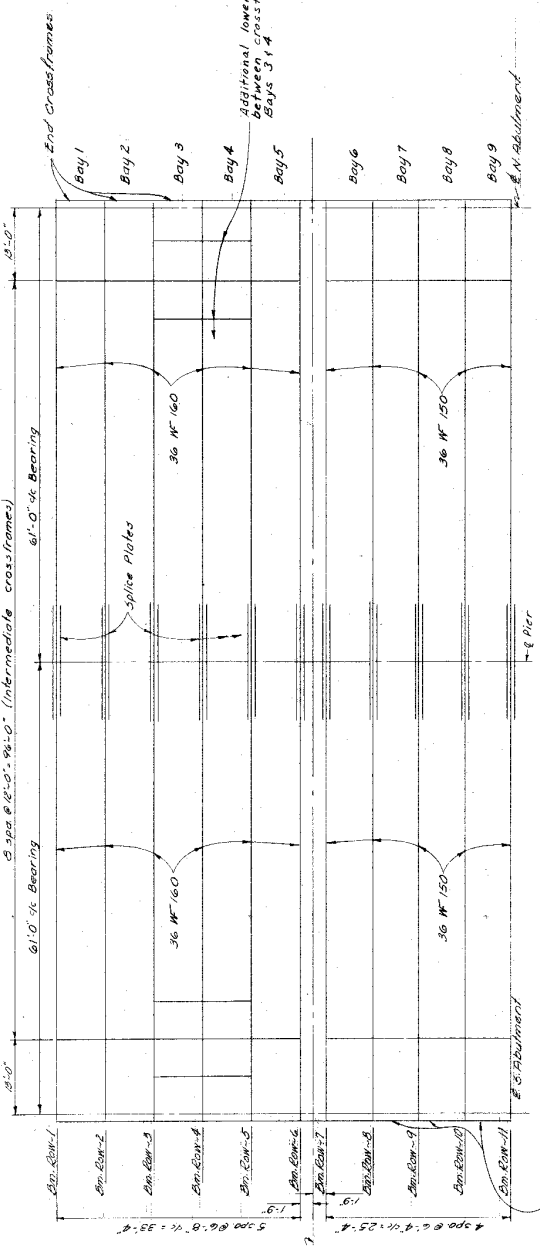
- PROCEDURE: Before the back walls of the abutments are placed, the backfill shall be placed and compacted to the required surgrade with 1:1 slope from the bridge seat to the subgrade.
- CONCRETE END JOISTS: Item 3-14 for payment.
- POROUS BACKFILL: For abutments, full length of abutment shall extend to the approach road or sidewalk.
- JOINTS: A joint shall be provided in the abutment portion of the end dam at each connection job.
- FOOTING KEY: The key under the footing shall be placed in a cavity made trench against undisturbed earth.
- ILLUMINATIONS: Light fixtures packed with an asbestos (A) one at the top of the 2\"/>
- POROUS BACKFILL FOR RETAINING WALLS: Porous backfill for retaining walls shall be 2\"/>
- KEY OR KEY FENCE: For fence connection to end post use sheet 163.

ALDEN E. TILSON & ASSOCIATES, LIMITED CONSULTING ENGINEERS COLUMBUS, OHIO			
ABUTMENT & FOLIOWING WALL DETAILS			
BRIDGE NO. RA 40-12.82			
SOUTH INNERBELT LANE 3+0.57			
DATE	BY	CHECKED	APPROVED
5/19/82	AP	AP	AP
FRANKLIN COUNTY 5 RA 79+43.01			DATE
DETAILS RA 5-92			BY



NO. OF SHEETS	DATE	PROJECT	SHEET NUMBER
2	OHIO		

FRANKLIN COUNTY
 PROJ. 40-12-82



DEAD LOAD DEFLECTION

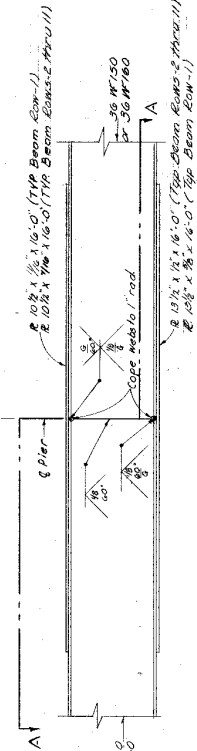
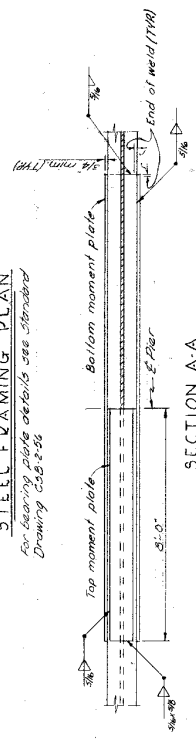
Row	Row 1	Row 2	Row 3	Row 4	Row 5	Row 6	Row 7	Row 8	Row 9	Row 10
Defl. due to self weight	1/8"	1/8"	1/8"	1/8"	1/8"	1/8"	1/8"	1/8"	1/8"	1/8"
Defl. due to remaining DL	1/8"	1/8"	1/8"	1/8"	1/8"	1/8"	1/8"	1/8"	1/8"	1/8"
Total DL deflection	1/4"	1/4"	1/4"	1/4"	1/4"	1/4"	1/4"	1/4"	1/4"	1/4"

Note: No Camber is required.

Additional lower ends
 before crossframes,
 Bays 3 & 4

STEEL FRAMING PLAN

For bearing plate details see Standard
 Drawing CCB-8-86



BEAM SPLICE WELDING PROCEDURE

1. All rows beams on each span, raise end of beam of either north or south abutment 1/8".
2. With weld beam flanges on web of pier with the following sequence: make one pass on each flange from top on the web; repeat using one pass of each location until welds are completed.
3. Weld top and bottom flange moment plates of pier.
4. Lower end of beam at the abutment.

ALDEN E. UTISON & ASSOCIATES, LIMITED CONSULTING ENGINEERS COLUMBUS, OHIO			
SUPERSTRUCTURE DETAILS			
BRIDGE NO. 429-40-1825			
SOUTH INNERBELT UNDER I-75 JCT.			
FRANKLIN COUNTY STA. 79+48.01			
DESIGNED BY	DATE	SCALE	PROJECT
PM	AP	Details 7/10/82	

DATE	2	OHIO
BY		
FOR		

NO.	1
DATE	
BY	
FOR	

NO.	1
DATE	
BY	
FOR	

NO.	1
DATE	
BY	
FOR	

NO.	1
DATE	
BY	
FOR	

NO.	1
DATE	
BY	
FOR	

NO.	1
DATE	
BY	
FOR	

NO.	1
DATE	
BY	
FOR	

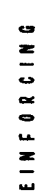
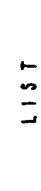
NO.	1
DATE	
BY	
FOR	

REINFORCING

STEEL

LIST

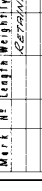
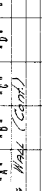
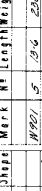
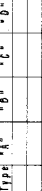
BENDING DIAGRAM



REINFORCING

STEEL

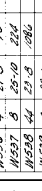
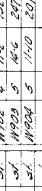
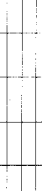
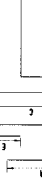
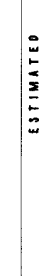
LIST



REINFORCING

STEEL

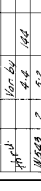
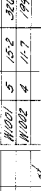
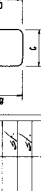
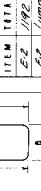
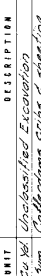
LIST



REINFORCING

STEEL

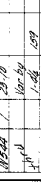
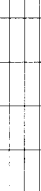
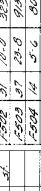
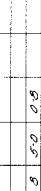
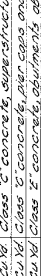
LIST



REINFORCING

STEEL

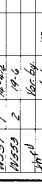
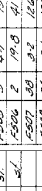
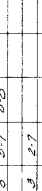
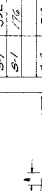
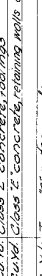
LIST



REINFORCING

STEEL

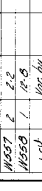
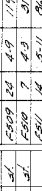
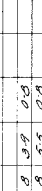
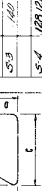
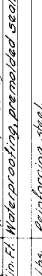
LIST



REINFORCING

STEEL

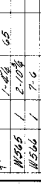
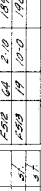
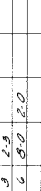
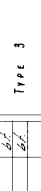
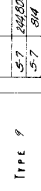
LIST



REINFORCING

STEEL

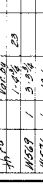
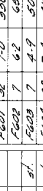
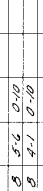
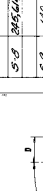
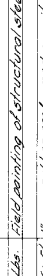
LIST



REINFORCING

STEEL

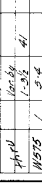
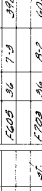
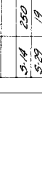
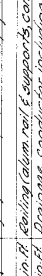
LIST



REINFORCING

STEEL

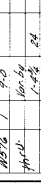
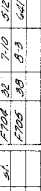
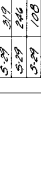
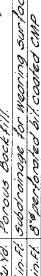
LIST



REINFORCING

STEEL

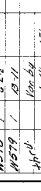
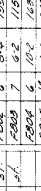
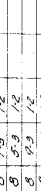
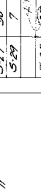
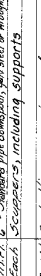
LIST



REINFORCING

STEEL

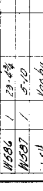
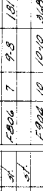
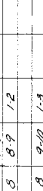
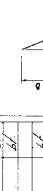
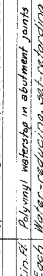
LIST



REINFORCING

STEEL

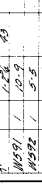
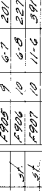
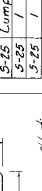
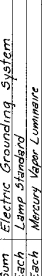
LIST



REINFORCING

STEEL

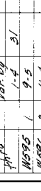
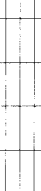
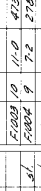
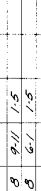
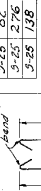
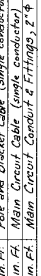
LIST



REINFORCING

STEEL

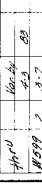
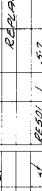
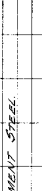
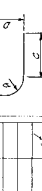
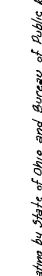
LIST



REINFORCING

STEEL

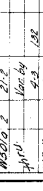
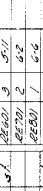
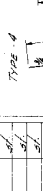
LIST



REINFORCING

STEEL

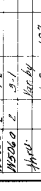
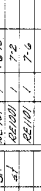
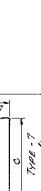
LIST



REINFORCING

STEEL

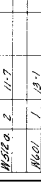
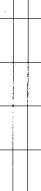
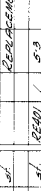
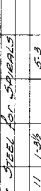
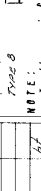
LIST



REINFORCING

STEEL

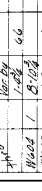
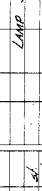
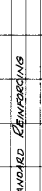
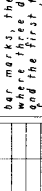
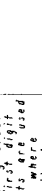
LIST



REINFORCING

STEEL

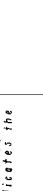
LIST



REINFORCING

STEEL

LIST





DATE	PROJECT
8	OHIO

Franklin County
FRA-40-1282

RECORDED
SEP 24 1966

REFERENCES:

Standard Drawings:

- End Dam and End Cross Frame Details - CSB-2-56, Sheets 2 & 3 Revised 2-2-59
- Scupper Details - CSB-2-56, Sheets 2 & 3 Revised 2-2-59
- Railing Details Type C Bearing Plate Details - AR-1-57, Sheet 3 Revised 4-2-62
- Approach Slab Details Supplemental Specifications Common Details: - AS-1-54, Revised 7-5-62
- 5-101, Dated 7-12-62
- Conductor and Downspout Detail - Sheet 166
- Railing Details - Sheet 169
- E/W Fence Details - Sheet 163
- Median End Details - Sheet 164
- Scupper Details - Sheet 164
- Lighting Details - Sheet 165

DESIGN SPECIFICATIONS: This structure conforms to the requirements of "Design Specifications for Highway Structures" of the State of Ohio, Department of Highways, dated 9-1-57, together with revisions thereof dated 2-21-58.

FOUNDATION SOUNDINGS: Foundation design and foundation quantities are based on the study of soil soundings and soil sampling soundings made at the site. This sounding information may be inspected in the office of the Bureau of Bridges in Columbus or in an abridged form in the Division office, but the State assumes no responsibility for the accuracy thereof.

WELDING OF structural steel shall be Class "A" except as otherwise shown. Any welds shown as field welds may be, at the option of the contractor, made in the shop. Class "B" welding shown thus:

B) —

CONCRETE DECK PLACING: In order to facilitate water curing of the concrete in the deck slab, the placing of concrete shall progress up grade. The slab may be placed in sections between transverse construction joints which are parallel to the transverse slab bars and are located near the center of any span.

BEARING SURFACES: The concrete surface under all rockers and bolsters shall be placed a minimum of 1/4-inch above the required elevation and accurately ground to the final elevation. Cost shall be included with the pertinent concrete Item S-1.

TRAFFIC MAINTENANCE: For details of traffic maintenance, see Roadway Plans.

FOUNDATION BEARING PRESSURE: Pier footings are designed for a maximum bearing pressure of 2.5 tons per square foot and abutment footings for 2.5 tons per square foot.

UTILITY LINES: All labor and expenses involved in relocating the affected utility lines shall be borne by the Owners. The Contractor and the Owners are requested to cooperate by arranging their work in such a manner that inconvenience to either will be held to a minimum.

WIRING DETAILS: For details and notes for wiring, see Roadway Plans. ELECTRICAL GROUNDS: A stranded No. 10 AWG bare copper wire electrical ground shall be embedded in the outside column on each side of the structure at the pier. The lower ends of the wires shall terminate in a 25-foot length coil placed under the concrete and the upper ends shall extend sufficiently above the top of the concrete to provide for an electric ground connection to outside beam of the superstructure. Ground each light pole with a No. 10 AWG stranded bare copper cable. Enclose each light pole with a No. 10 AWG anchor bolt and the other end to the top flange of the outside beam.

CURING: Deck concrete shall be cured in accordance with Sec. S-1.21 Method (a) using a continuous application of water. Plastic coated burlap or mats shall not be used.

GRAVEL, if used as the coarse aggregate, shall be in accordance with Sec. M-3.93 and shall be of M-3.92 for Class "C" concrete in the superstructure. Gravel meeting the requirements of Sec. M-3.93 also may be used for other concrete in this structure.

ELECTRICAL CONDUITS to be installed and paid for by the Columbus & Southern Ohio Electric Company.

SHOP PAINTING STEEL: The surface preparation of all steel requiring shop painting, as per the Plans and Specifications, shall be accomplished by blast cleaning or power-tool cleaning, except as noted in the specifications regarding the use of Chromate Primers.

SHEET LEAD shall conform to the requirements of ASTM Designation B29 without restriction to the Common Desilverized type.

SURFACE FINISH OF CONCRETE: The requirements of Sec. S-1.22, Rubbed Finish, shall apply to the following exposed concrete surfaces:

- a. The entire superstructure except the top and bottom surfaces of roadways and sidewalks.
- b. All surfaces of piers and abutments which will be exposed upon completion of the construction except bridge seats and backwalls.

ALDEN E. STILSON & ASSOCIATES, LIMITED
CONSULTING ENGINEERS
COLUMBUS, OHIO

GENERAL NOTES
BRIDGE NO. FRA-40-1325
SOUTH INNERBET UNDER THIRD ST.
FRANKLIN COUNTY STA. 73+43.01

REVISION	DATE	BY	APP'D