

BENCHMARK DATA			
BM #1 STA.	ELEV.	OFFSET	
BM #2 STA.	ELEV.	OFFSET	
BM #3 STA.	ELEV.	OFFSET	
BM #4 STA.	ELEV.	OFFSET	

FOR ADDITIONAL BENCHMARK INFORMATION, SEE ROADWAY PLAN SHEET

NOTES
 EARTHWORK LIMITS SHOWN ARE APPROXIMATE. ACTUAL SLOPES SHALL CONFORM TO PLAN CROSS SECTIONS.

DESIGN TRAFFIC:
 2023 ADT = 10,720 2023 ADTT = 330
 2050 ADT = 14,470 2050 ADTT = 450
 DIRECTIONAL DISTRIBUTION = 100%

LEGEND
 TARGET PROJECT BORING LOCATION (SURVEYED LOCATION OF BORINGS NOT AVAILABLE AT THIS TIME)

HYDRAULIC DATA
 DRAINAGE AREA = 969 SQ. MILES
 Q (25) = 55,800 CFS V (25) = 5.91 FT/S
 Q (100) = 72,900 CFS V (100) = 6.41 FT/S
 STRUCTURE CLEARS THE 100 YEAR DESIGN HW BY 0.07 FEET.

EXISTING STRUCTURE

TYPE: CONTINUOUS WELDED PLATE GIRDER WITH REINFORCED CONCRETE 'T' PIERS AND STUB ABUTMENTS

SPANS: 102.50±, 6 SPANS AT 136.75±, 102.50± C/C BEARINGS

ROADWAY: 33'-4"± TOE/TOE PARAPET

LOADING: CF=400(57) / HS-20

SKEW: 0°0'0"

WEARING SURFACE: 1 3/4" CONCRETE OVERLAY

APPROACH SLABS: AS-1-54 (25'-0"± LONG, 15"± THICK)

ALIGNMENT: TANGENT

CROWN: 0.0156± FT/FT

STRUCTURE FILE NUMBER: 8301085

DATE BUILT: 1964

REHABILITATED: 2020

DISPOSITION: TO REMAIN AND COMPANION BRIDGE BUILT TO WEST

PROPOSED STRUCTURE

TYPE: CONTINUOUS WELDED STEEL PLATE GIRDER (GRADE 50W) WITH COMPOSITE REINFORCED CONCRETE DECK SUPPORTED ON CONCRETE STUB ABUTMENTS AND 'T' PIERS SUPPORTED ON STEEL PILES

SPANS: 197'-7 1/4", 220'-0", 220'-0", 220'-0", 171'-7" C/C BEARINGS

ROADWAY: 38'-0" TOE/TOE PARAPET

LOADING: HL93 AND 60 PSF FUTURE WEARING SURFACE

SKEW: 0°0'0"

WEARING SURFACE: 1" MONOLITHIC CONCRETE

APPROACH SLABS: 30'-0" LONG, 17" THICK (AS-1-15, AS-2-15)

ALIGNMENT: TANGENT

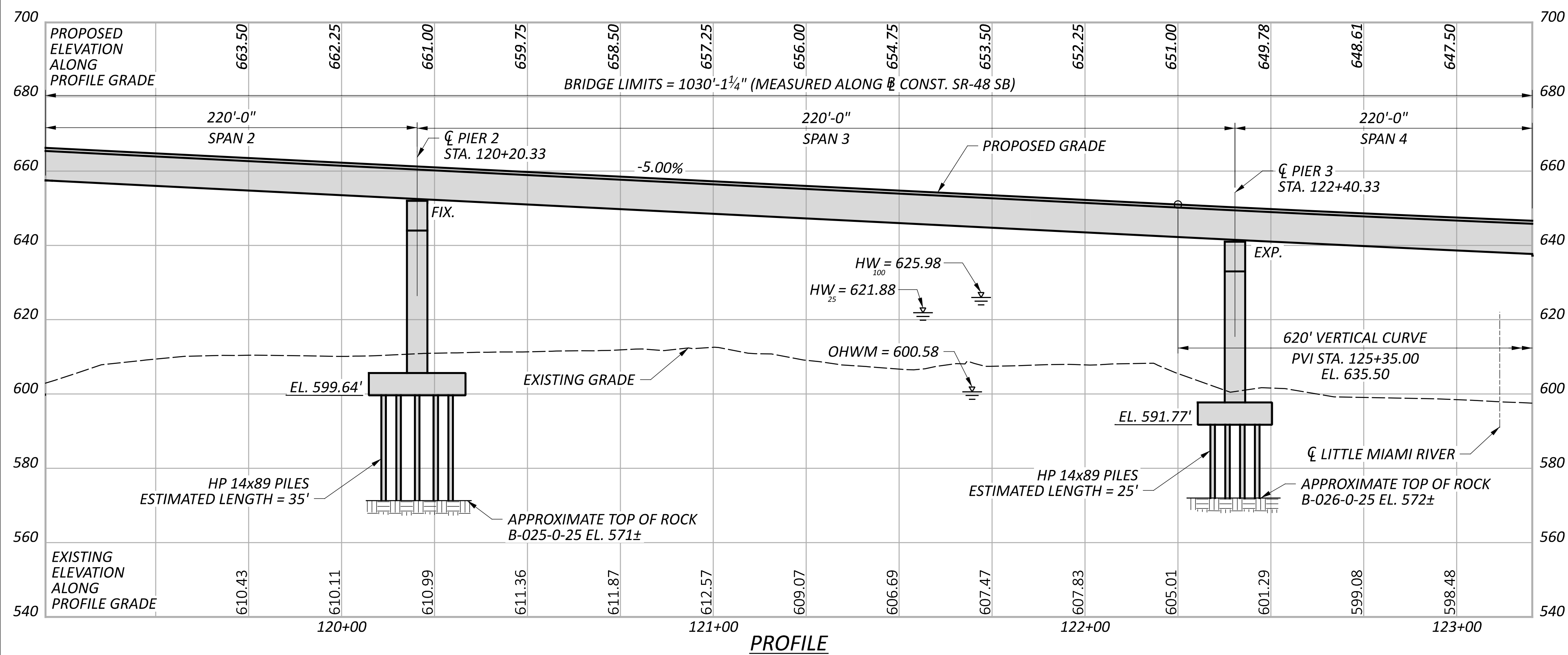
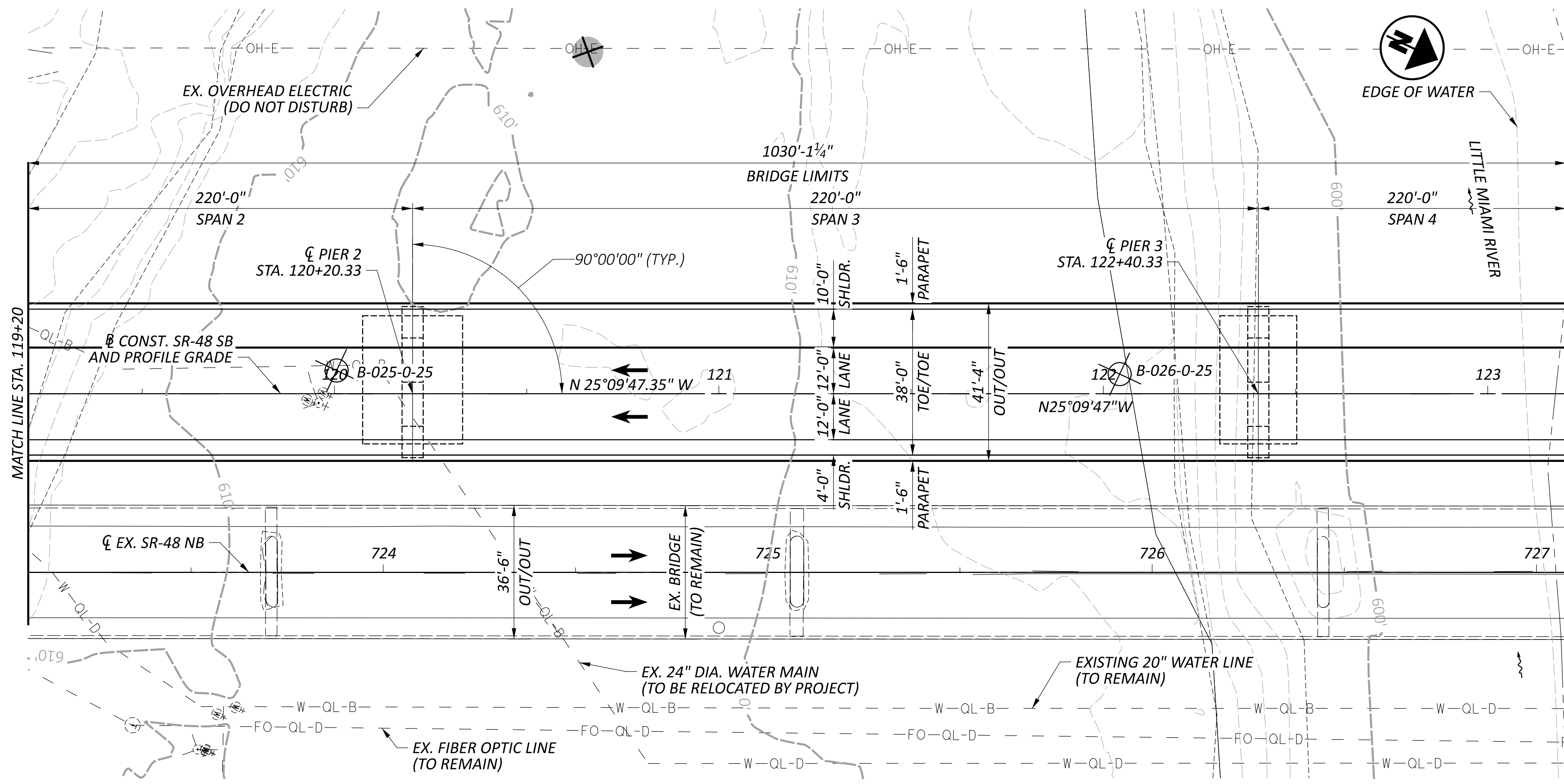
CROWN: 0.016 FT/FT

DECK AREA: 42,655 SF

COORDINATES: LATITUDE 39°22'01.01"
 LONGITUDE 84°13'26.47"

SITE PLAN 1 OF 3
 BRIDGE NO. WAR-48-8.63L
 SR-48 OVER LITTLE MIAMI RIVER

SFN	8301805
DESIGN AGENCY	Michael Baker INTERNATIONAL
DESIGNER	BDC
CHECKER	SRW
REVIEWER	
CWL	04/15/26
PROJECT ID	117567
SUBSET	TOTAL
1	6
SHEET	TOTAL
P.1	P.6



BENCHMARK DATA			
BM #1 STA.	ELEV.	OFFSET	
BM #2 STA.	ELEV.	OFFSET	
BM #3 STA.	ELEV.	OFFSET	
BM #4 STA.	ELEV.	OFFSET	

FOR ADDITIONAL BENCHMARK INFORMATION, SEE ROADWAY PLAN SHEET

NOTES

EARTHWORK LIMITS SHOWN ARE APPROXIMATE. ACTUAL SLOPES SHALL CONFORM TO PLAN CROSS SECTIONS.

DESIGN TRAFFIC:

2023 ADT = 10,720 2023 ADTT = 330

2050 ADT = 14,470 2050 ADTT = 450

DIRECTIONAL DISTRIBUTION = 100%

LEGEND

⊕ TARGET PROJECT BORING LOCATION (SURVEYED LOCATION OF BORINGS NOT AVAILABLE AT THIS TIME)

HYDRAULIC DATA

DRAINAGE AREA = 969 SQ. MILES

Q (25) = 55,800 CFS V (25) = 5.91 FT/S

Q (100) = 72,900 CFS V (100) = 6.41 FT/S

STRUCTURE CLEARS THE 100 YEAR DESIGN HW BY 0.07 FEET.

EXISTING STRUCTURE

TYPE: CONTINUOUS WELDED PLATE GIRDER WITH REINFORCED CONCRETE 'T' PIERS AND STUB ABUTMENTS

SPANS: 102.50±, 6 SPANS AT 136.75±, 102.50± C/C BEARINGS

ROADWAY: 33'-4"± TOE/TOE PARAPET

LOADING: CF=400(57) / HS-20

SKEW: 0°0'0"

WEARING SURFACE: 1 3/4" CONCRETE OVERLAY

APPROACH SLABS: AS-1-54 (25'-0"± LONG, 15"± THICK)

ALIGNMENT: TANGENT

CROWN: 0.0156± FT/FT

STRUCTURE FILE NUMBER: 8301085

DATE BUILT: 1964

REHABILITATED: 2020

DISPOSITION: TO REMAIN AND COMPANION BRIDGE BUILT TO WEST

PROPOSED STRUCTURE

TYPE: CONTINUOUS WELDED STEEL PLATE GIRDER (GRADE 50W) WITH COMPOSITE REINFORCED CONCRETE DECK SUPPORTED ON CONCRETE STUB ABUTMENTS AND 'T' PIERS SUPPORTED ON STEEL PILES

SPANS: 197'-7 1/4", 220'-0", 220'-0", 220'-0", 171'-7" C/C BEARINGS

ROADWAY: 38'-0" TOE/TOE PARAPET

LOADING: HL93 AND 60 PSF FUTURE WEARING SURFACE

SKEW: 0°0'0"

WEARING SURFACE: 1" MONOLITHIC CONCRETE

APPROACH SLABS: 30'-0" LONG, 17" THICK (AS-1-15, AS-2-15)

ALIGNMENT: TANGENT

CROWN: 0.016 FT/FT

DECK AREA: 42,655 SF

COORDINATES: LATITUDE 39°22'01.01"

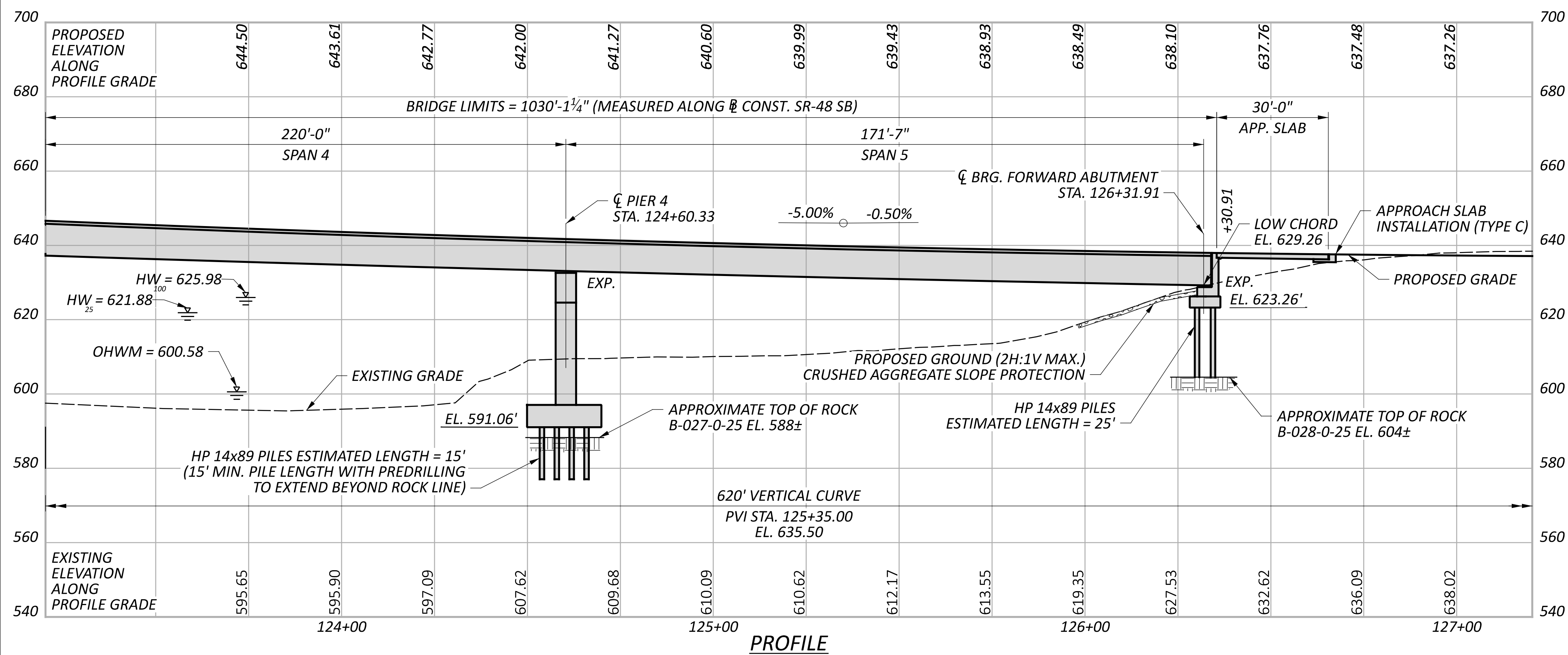
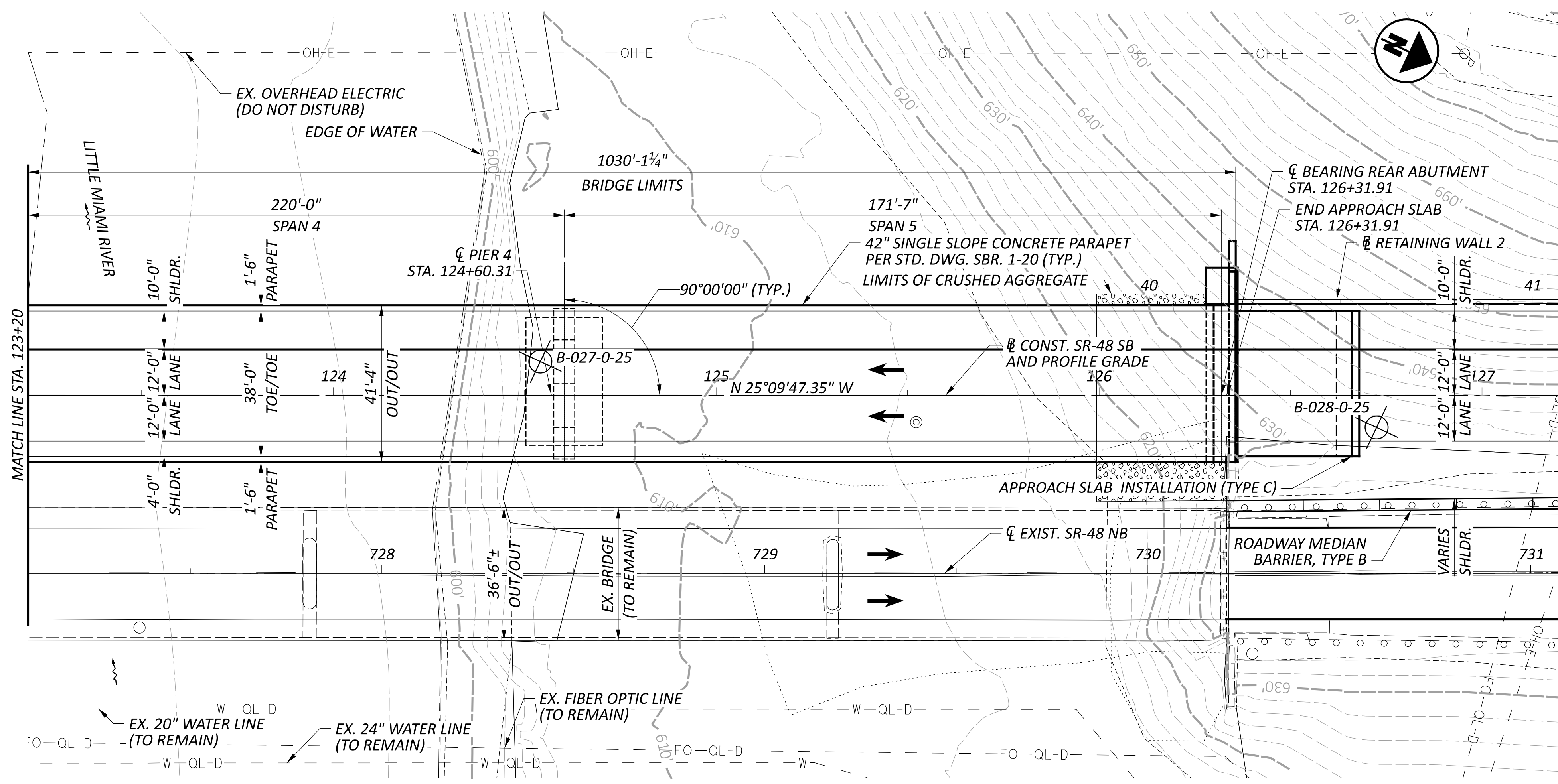
LONGITUDE 84°13'26.47"

SITE PLAN 2 OF 3

BRIDGE NO. WAR-48-8.63L

SR-48 OVER LITTLE MIAMI RIVER

SFN	8301805
DESIGN AGENCY	Michael Baker INTERNATIONAL
DESIGNER	BDC
CHECKER	SRW
REVIEWER	
CWL	04/15/26
PROJECT ID	117567
SUBSET	2
TOTAL	6
SHEET	P.2
TOTAL	P.6



BENCHMARK DATA

BM #1 STA.	ELEV.	OFFSET
BM #2 STA.	ELEV.	OFFSET
BM #3 STA.	ELEV.	OFFSET
BM #4 STA.	ELEV.	OFFSET

FOR ADDITIONAL BENCHMARK INFORMATION, SEE ROADWAY PLAN SHEET

NOTES

EARTHWORK LIMITS SHOWN ARE APPROXIMATE. ACTUAL SLOPES SHALL CONFORM TO PLAN CROSS SECTIONS.

DESIGN TRAFFIC:

2023 ADT =	10,720	2023 ADTT =	330
2050 ADT =	14,470	2050 ADTT =	450
DIRECTIONAL DISTRIBUTION = 100%			

LEGEND

⊕ TARGET PROJECT BORING LOCATION (SURVEYED LOCATION OF BORINGS NOT AVAILABLE AT THIS TIME)

HYDRAULIC DATA

DRAINAGE AREA = 969 SQ. MILES
 Q (25) = 55,800 CFS V (25) = 5.91 FT/S
 Q (100) = 72,900 CFS V (100) = 6.41 FT/S
 STRUCTURE CLEARS THE 100 YEAR DESIGN HW BY 0.07 FEET.

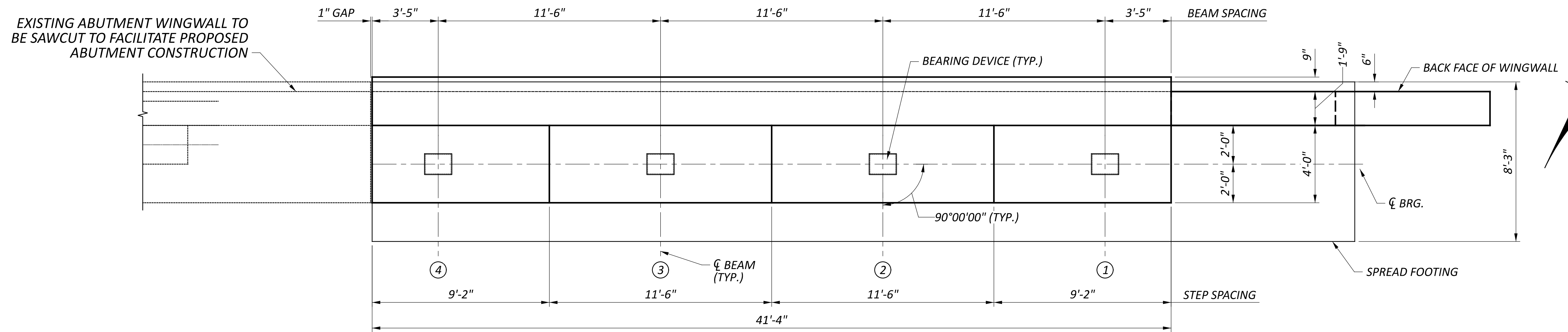
EXISTING STRUCTURE

TYPE: CONTINUOUS WELDED PLATE GIRDER WITH REINFORCED CONCRETE 'T' PIERS AND STUB ABUTMENTS
 SPANS: 102.50±, 6 SPANS AT 136.75±, 102.50± C/C BEARINGS
 ROADWAY: 33'-4"± TOE/TOE PARAPET
 LOADING: CF=400(57) / HS-20
 SKEW: 0°0'0"
 WEARING SURFACE: 1 3/4" CONCRETE OVERLAY
 APPROACH SLABS: AS-1-54 (25'-0"± LONG, 15"± THICK)
 ALIGNMENT: TANGENT
 CROWN: 0.0156± FT/FT
 STRUCTURE FILE NUMBER: 8301085
 DATE BUILT: 1964
 REHABILITATED: 2020
 DISPOSITION: TO REMAIN AND COMPANION BRIDGE BUILT TO WEST

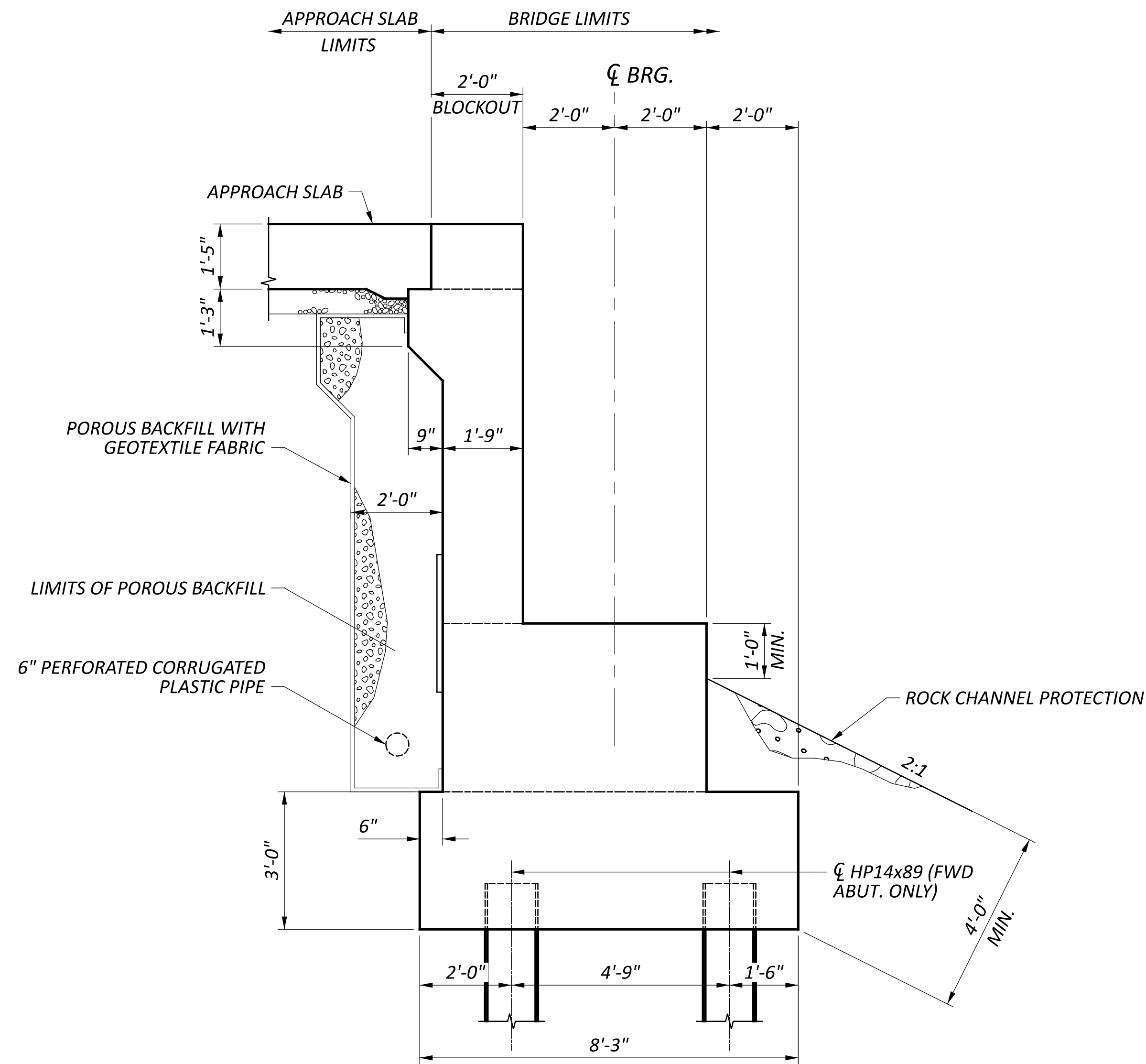
PROPOSED STRUCTURE

TYPE: CONTINUOUS WELDED STEEL PLATE GIRDER (GRADE 50W) WITH COMPOSITE REINFORCED CONCRETE DECK SUPPORTED ON CONCRETE STUB ABUTMENTS AND 'T' PIERS SUPPORTED ON STEEL PILES
 SPANS: 197'-7 1/4", 220'-0", 220'-0", 220'-0", 171'-7" C/C BEARINGS
 ROADWAY: 38'-0" TOE/TOE PARAPET
 LOADING: HL93 AND 60 PSF FUTURE WEARING SURFACE
 SKEW: 0°0'0"
 WEARING SURFACE: 1" MONOLITHIC CONCRETE
 APPROACH SLABS: 30'-0" LONG, 17" THICK (AS-1-15, AS-2-15)
 ALIGNMENT: TANGENT
 CROWN: 0.016 FT/FT
 DECK AREA: 42,655 SF
 COORDINATES: LATITUDE 39°22'01.01"
 LONGITUDE 84°13'26.47"

SFN	8301805
DESIGN AGENCY	Michael Baker INTERNATIONAL
DESIGNER	BDC
CHECKER	SRW
REVIEWER	
CWL	04/15/26
PROJECT ID	117567
SUBSET	TOTAL
3	6
SHEET	TOTAL
P.3	P.6

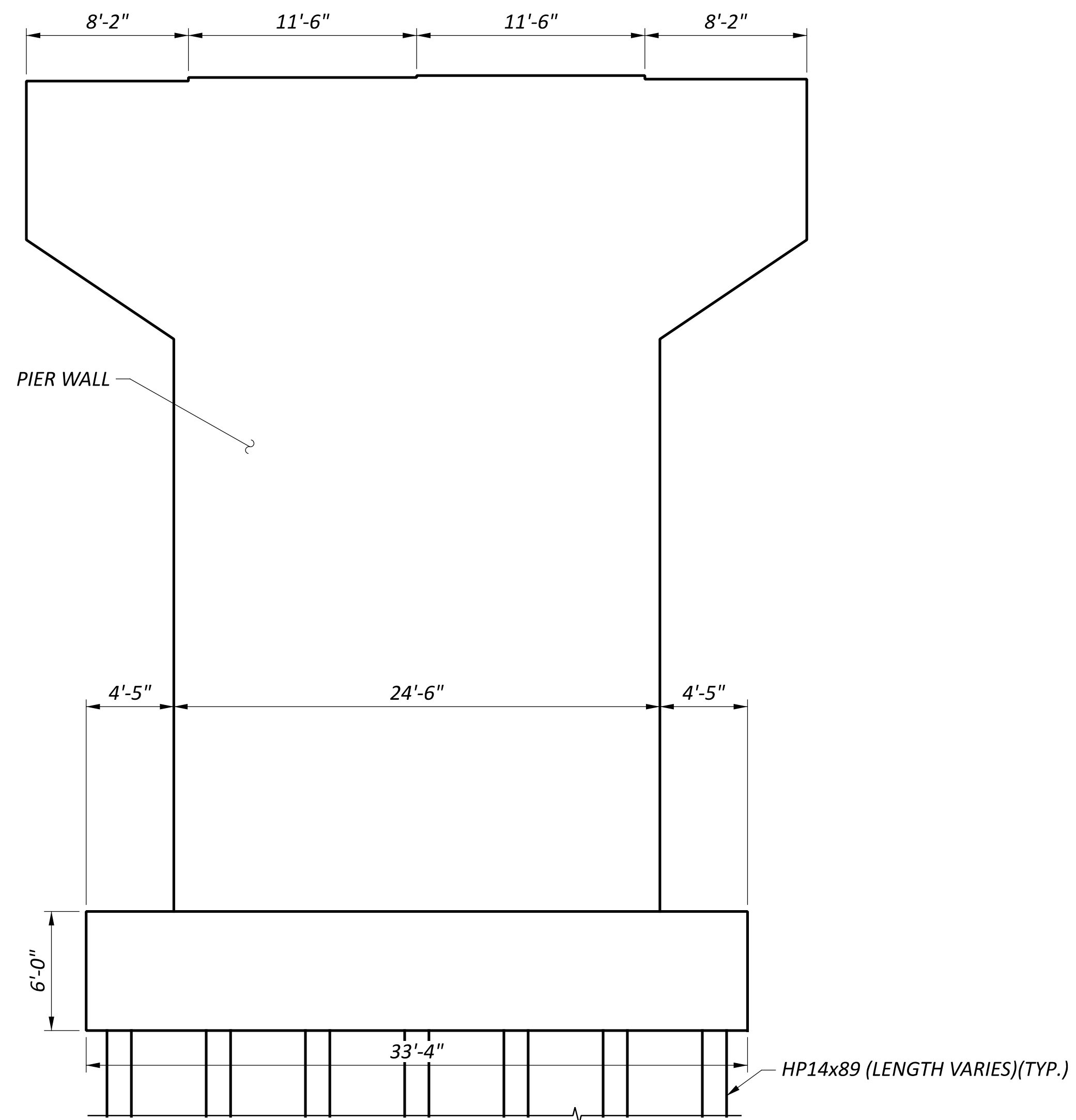
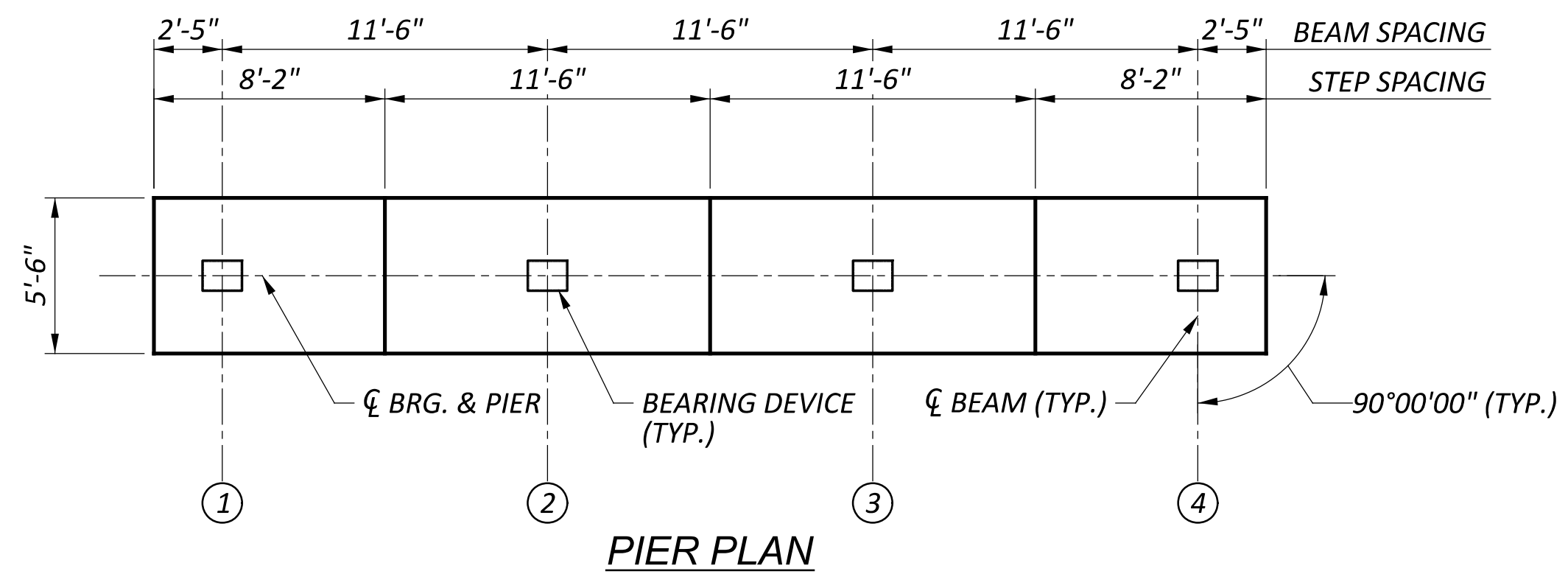
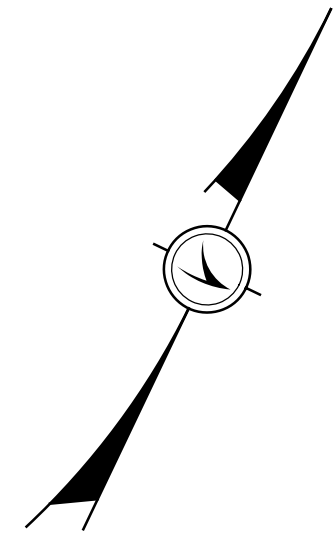


ABUTMENT PLAN
(REAR ABUTMENT SHOWN, FORWARD ABUTMENT SIMILAR)

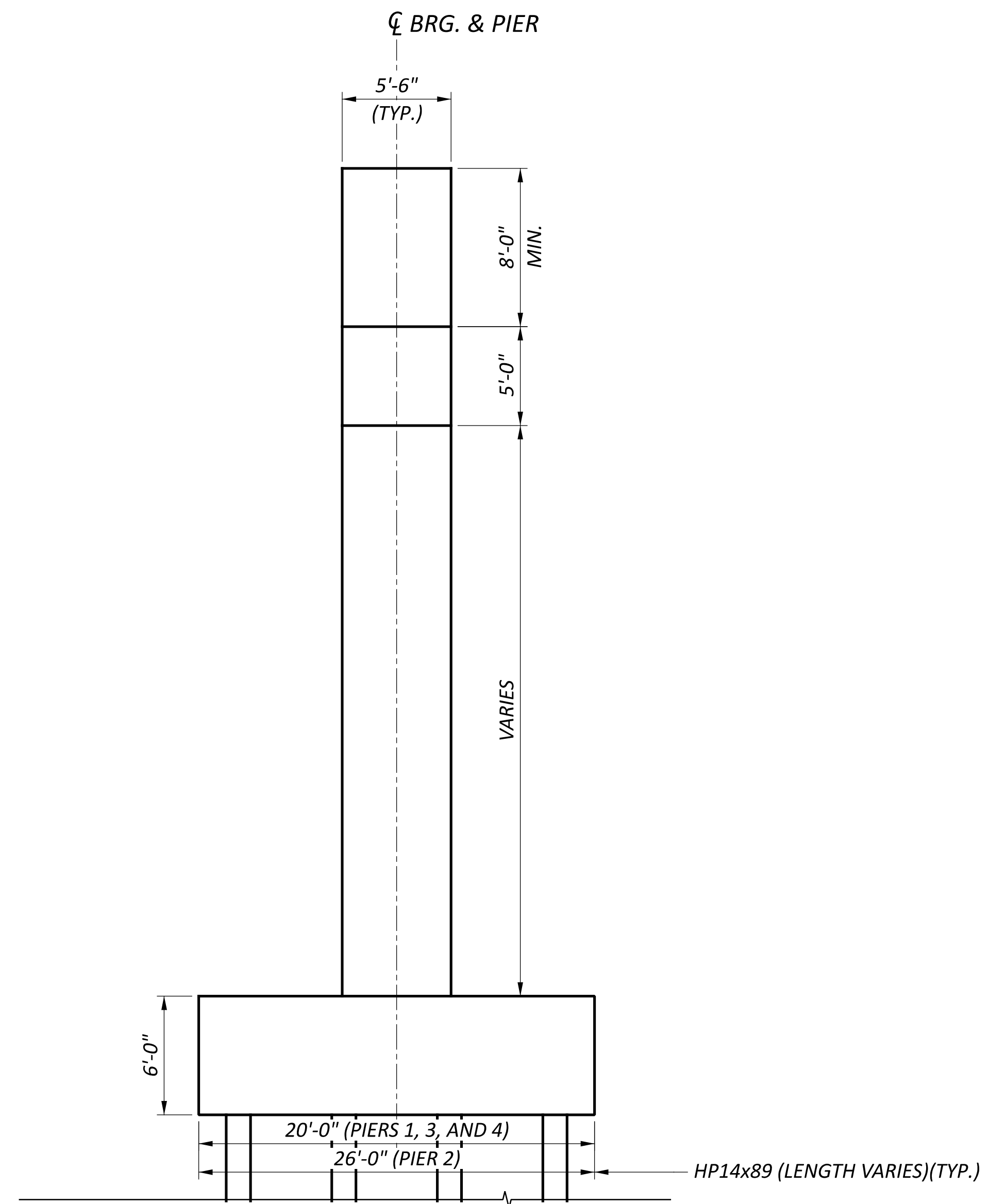


ABUTMENT SECTION
(REAR ABUTMENT FOUNDED ON SPREAD FOOTING, FORWARD ABUTMENT ON PILES)

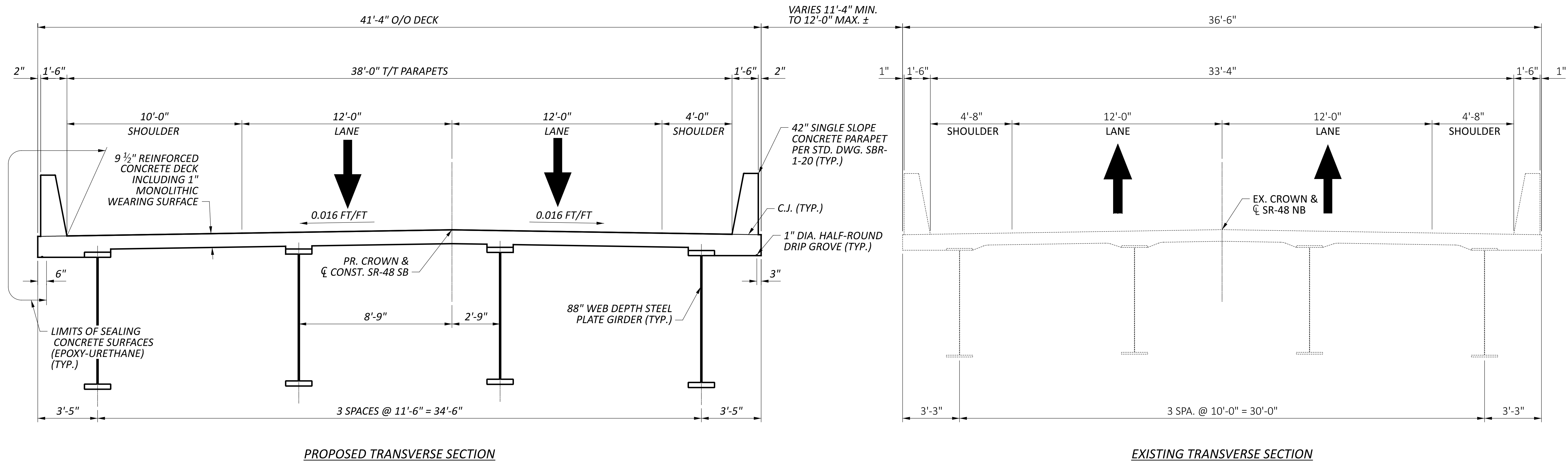
SFN	
8301805	
DESIGN AGENCY	
Michael Baker INTERNATIONAL	
DESIGNER	CHECKER
BDC	SRW
REVIEWER	
CWL 04/15/26	
PROJECT ID	
117567	
SUBSET	TOTAL
4	6
SHEET	TOTAL
P.4	P.6



PIER ELEVATION
(PILE AMOUNT AND SPACING VARIES)



PIER ELEVATION
(PILE AMOUNT AND SPACING VARIES)



TRANSVERSE SECTION
 BRIDGE NO. WAR-48-8.63L
 SR 48 OVER LITTLE MIAMI RIVER

SFN	
8301805	
DESIGN AGENCY	
Michael Baker INTERNATIONAL	
DESIGNER	CHECKER
BDC	SRW
REVIEWER	
CWL 04/15/26	
PROJECT ID	
117567	
SUBSET	TOTAL
6	6
SHEET	TOTAL
P.6	P.6

NOTES:
 1. ALL EXISTING DIMENSIONS ARE ±.