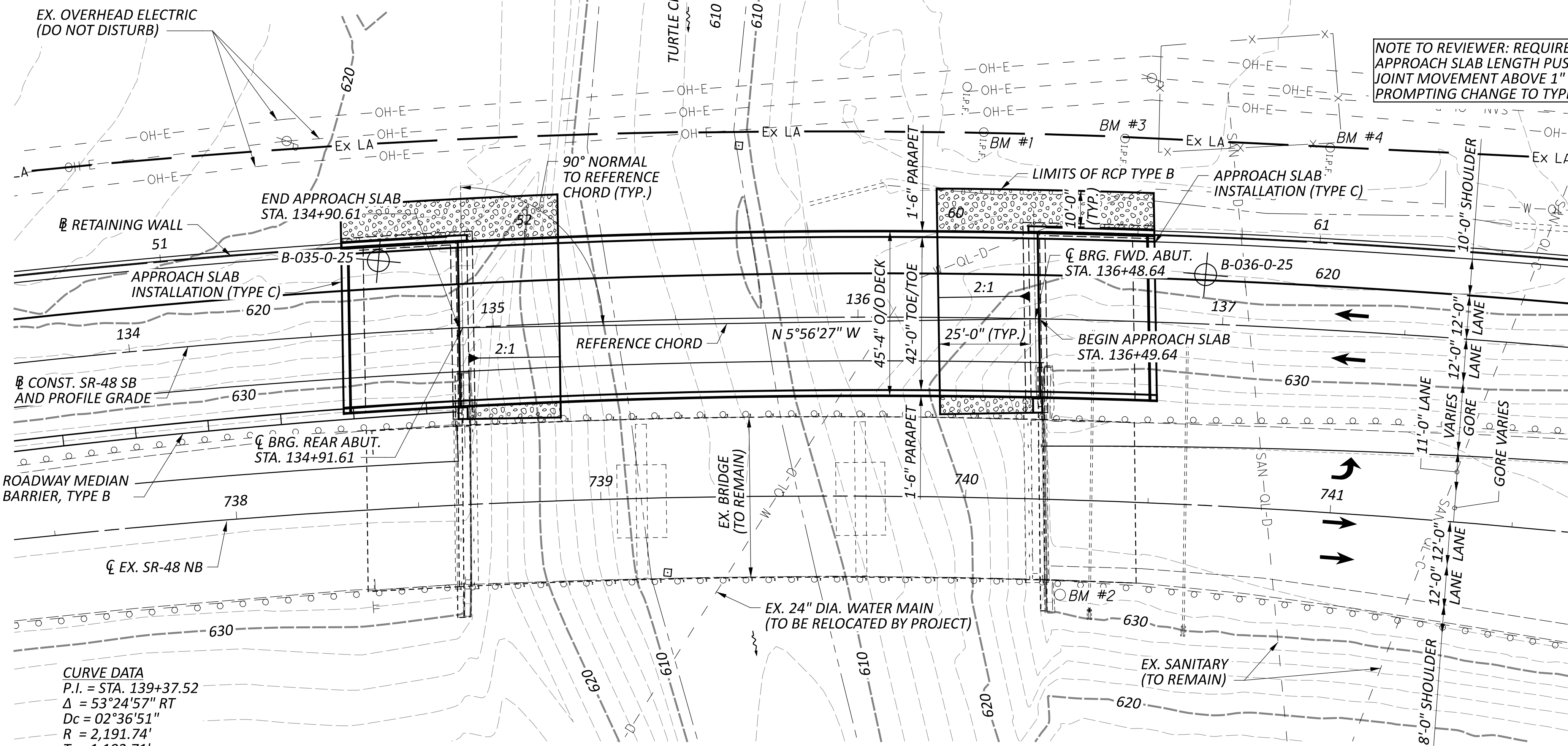
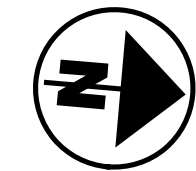


NOTE TO REVIEWER: DISTANCE FROM FOUNDATIONS TO ELECTRIC LINES IS ENOUGH THAT PILE DRIVING EQUIPMENT CAN MAINTAIN A 20' MINIMUM GAP.



NOTE TO REVIEWER: REQUIRED APPROACH SLAB LENGTH PUSHED JOINT MOVEMENT ABOVE 1" PROMPTING CHANGE TO TYPE C

BENCHMARK DATA			
BM #1 STA. 136+33.83	ELEV. 619.04	OFFSET 50.93' LT	IRON PIN
BM #2 STA. 136+57.22	ELEV. 632.47	OFFSET 75.50' RT	IRON PIN
BM #3 STA. 136+71.70	ELEV. 617.97	OFFSET 50.05' LT	IRON PIN
BM #4 STA. 137+26.74	ELEV. 617.21	OFFSET 49.94' LT	IRON PIN

FOR ADDITIONAL BENCHMARK INFORMATION, SEE ROADWAY PLAN SHEET XX/XX

NOTES:
EARTHWORK LIMITS SHOWN ARE APPROXIMATE. ACTUAL SLOPES SHALL CONFORM TO PLAN CROSS SECTIONS.

DESIGN TRAFFIC:
2023 ADT = 10,720 2023 ADTT = 330
2050 ADT = 14,470 2050 ADTT = 450
DIRECTIONAL DISTRIBUTION = 100%

LEGEND:
⊕ TARGET PROJECT BORING LOCATION (SURVEYED LOCATION OF BORINGS NOT AVAILABLE AT THIS TIME)

HYDRAULIC DATA:
DRAINAGE AREA = 57.9 SQ. MILES
Q (25) = 11,426 CFS V (25) = 9.67 FT/S
Q (100) = 14,600 CFS V (100) = 9.77 FT/S
STRUCTURE CLEARS THE 100 YEAR DESIGN HW BY 3.43 FEET.

CURVE DATA
P.I. = STA. 139+37.52
Δ = 53°24'57" RT
Dc = 02°36'51"
R = 2,191.74'
T = 1,102.71'
L = 2,043.32'
E = 261.77'

PLAN

EXISTING STRUCTURE

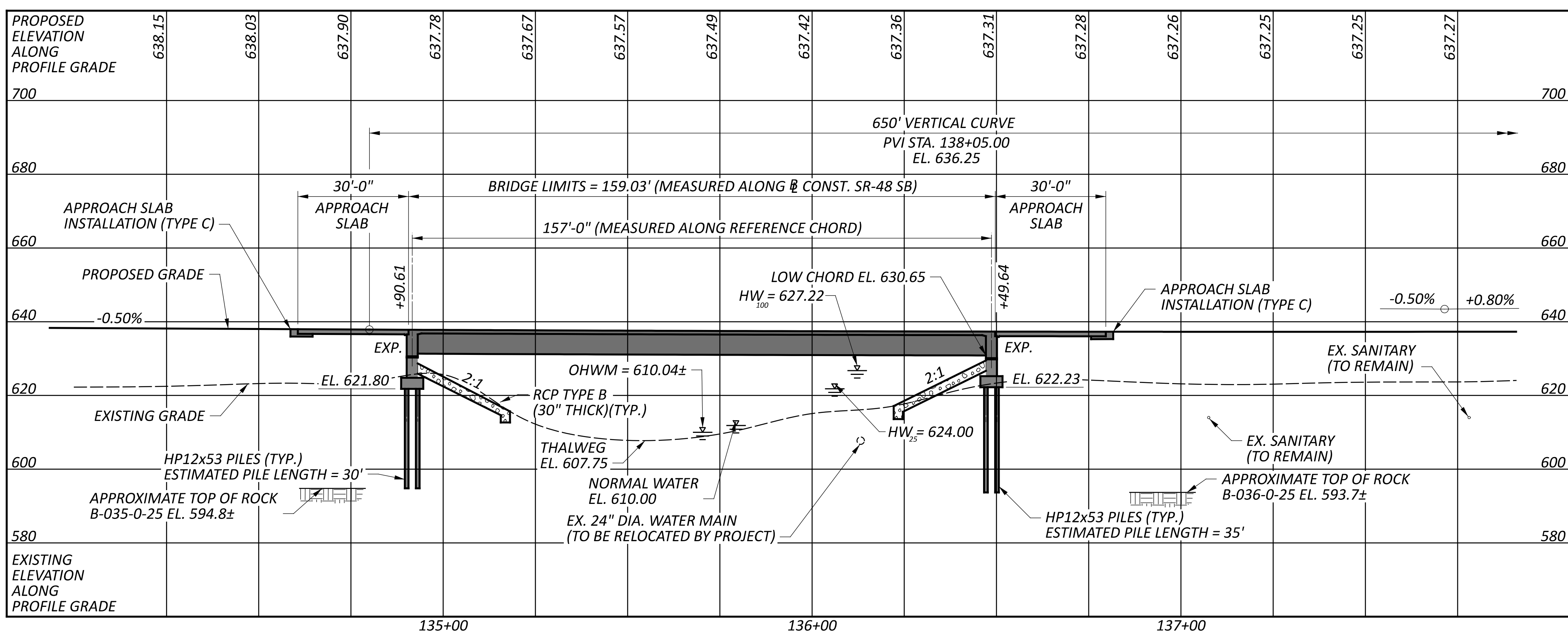
TYPE: CONTINUOUS ROLLED STEEL BEAM WITH REINFORCED CONCRETE DECK AND SUBSTRUCTURE

SPANS: 48'-0"±, 60'-0"±, 48'-0"± C/C BEARINGS
ROADWAY: 44'-0"± F/F GUARDRAIL
LOADING: HS-20-44 AND 60 PSF FUTURE WEARING SURFACE
SKEW: 0°0'0" (MEASURED NORMAL TO REFERENCE CHORD)
WEARING SURFACE: 1" MONOLITHIC CONCRETE
APPROACH SLABS: AS-1-81 (25'-0"± LONG, 15"± THICK)
ALIGNMENT: 2°45'00" CURVE RT
SUPERELEVATION: 0.065± FT/FT MAX.
STRUCTURE FILE NUMBER: 8301115
DATE BUILT: 1964
REHABILITATED: 2015
DISPOSITION: TO REMAIN AND COMPANION BRIDGE BUILT TO WEST

PROPOSED STRUCTURE

TYPE: SINGLE SPAN WELDED STEEL PLATE GIRDER (GRADE 50W) WITH COMPOSITE REINFORCED CONCRETE DECK SUPPORTED ON SEMI-INTEGRAL CONCRETE STUB ABUTMENTS SUPPORTED ON PILES

SPANS: 157'-0" C/C BEARINGS (MEASURED ALONG REFERENCE CHORD)
ROADWAY: 42'-0" TOE/TOE PARAPET
LOADING: HL93 AND 60 PSF FUTURE WEARING SURFACE
SKEW: 0°0'0" (MEASURED NORMAL TO REFERENCE CHORD)
WEARING SURFACE: 1" MONOLITHIC CONCRETE
APPROACH SLABS: 30'-0" LONG, 17" THICK (AS-1-15, AS-2-15)
ALIGNMENT: 2°36'51" CURVE RT
SUPERELEVATION: 0.046 FT/FT MAX.
DECK AREA: 7210 SF
COORDINATES: LATITUDE 39°22'18.00" N
LONGITUDE 84°13'35.90" W

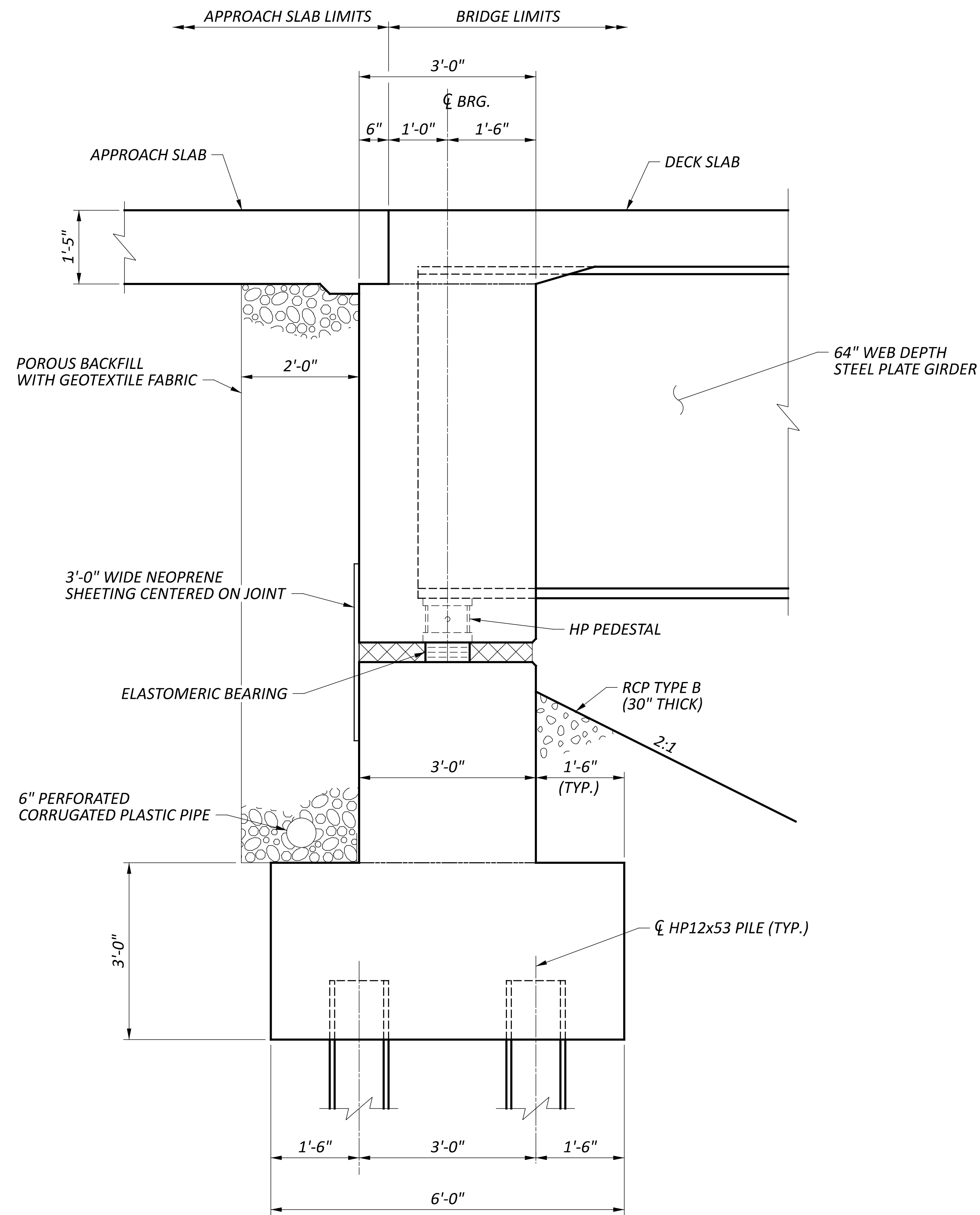


PROFILE ALONG CONST. SR-48 SB

WAR-SR48-7.50

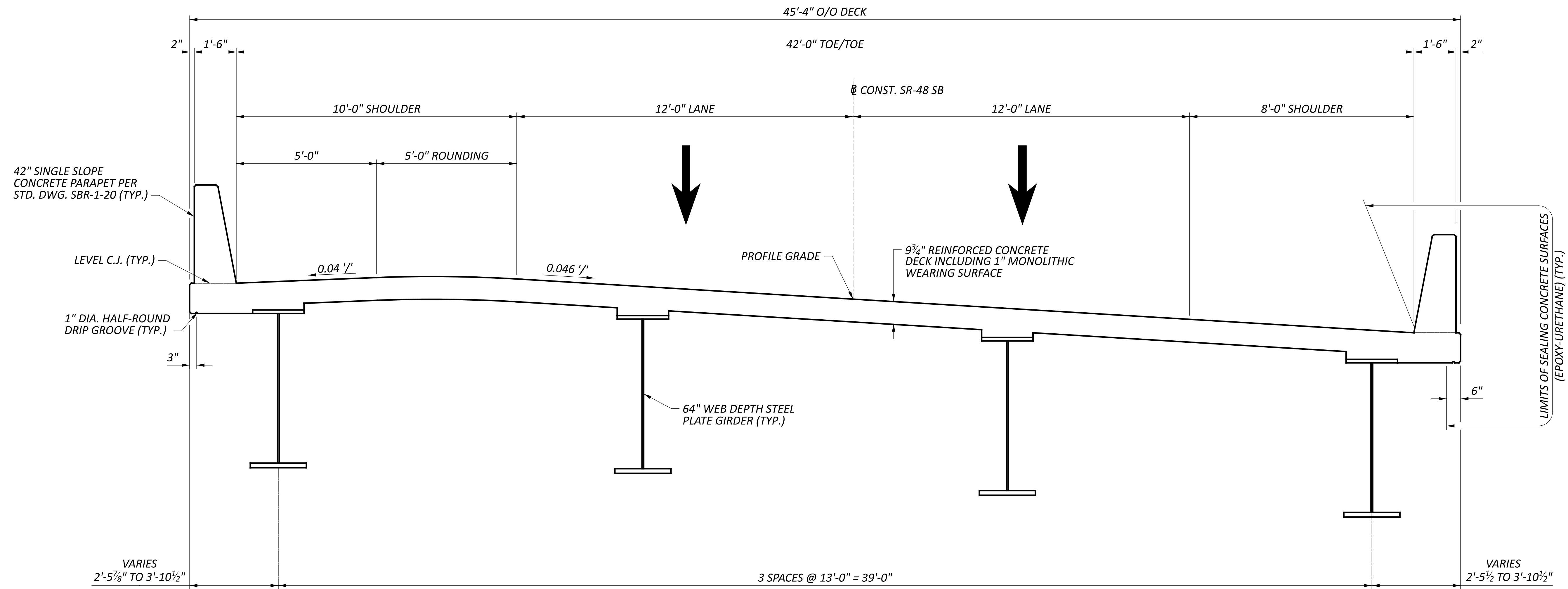
SITE PLAN
 BRIDGE NO. WAR-48-0898
 SR48 SOUTHBOUND OVER TURTLE CREEK

SFN	8301116
DESIGN AGENCY	B&N burgessniple.com
DESIGNER	MES
CHECKER	JAA
REVIEWER	BCS
PROJECT ID	04/08/26
SUBSET	117567
TOTAL	1
SHEET	3
P.O.	TOTAL



ABUTMENT SECTION

SFN	
8301116	
DESIGN AGENCY	
B&N burgessniple.com	
DESIGNER	CHECKER
MES	JAA
REVIEWER	
BCS 04/08/26	
PROJECT ID	
117567	
SUBSET	TOTAL
2	3
SHEET	TOTAL
P.0	\$TOTAL



TRANSVERSE SECTION
 (SHEAR STUDS NOT SHOWN)

TRANSVERSE SECTION
 BRIDGE NO. WAR-48-0898
 SR48 SOUTHBOUND OVER TURTLE CREEK

SFN
 8301116

DESIGN AGENCY



DESIGNER CHECKER
 MES JAA

REVIEWER
 BCS 04/08/26

PROJECT ID
 117567

SUBSET	TOTAL
3	3

SHEET	TOTAL
P.0	\$TOTAL