

STUDY AND ANALYSIS INFORMATION

Municipality:	Washington Township	Traffic Volumes Obtained By:	StreetLight Data
County:	Warren	Analysis Date:	3/27/2025
ODOT Engineering District:	8	Agency/ Company Name Performing Warrant Analysis:	ODOT D08
Google map link:	Map		

Analysis Information

Data Collection Date: 7/17/2024
Day of the Week: Wednesday

Is the intersection in a built-up area of an isolated community of <10,000 population? No

Existing Traffic Signal at intersection: No

Total Number of Approaches at Intersection: 4

Major Street Information

Major Street Name and Route Number: US 22

Major Street Approach Direction: E-Bound
W-Bound

Number of Thru Lanes on Each Major Street Approach: 1 LANE(S)

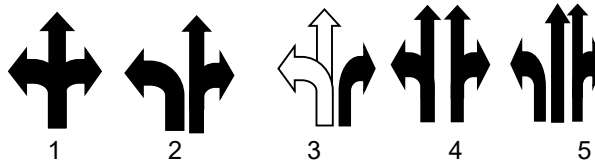
Speed Limit or 85th Percentile Speed on the Major Street*: 55 MPH

*Unknown assumes below 45 mph

Minor Street Information

Minor Street Name and Route Number: Clarksville Rd

Minor Street Approach Configuration: 1 N-Bound
1 S-Bound



Number of Thru Lanes on Each Minor Street Approach: 1 LANE(S)

Apply Right Turn Lane Reduction*: Yes

*Right Turn Lane Reduction Shall be used for Warrants 1, 2, & 3 for New ODOT Signals. Please refer to TEM 402-3.2 for clarification and criteria under which Right Turn Reduction is not required.

TRAFFIC SIGNAL WARRANT ANALYSIS FINDINGS

	Applicable?	100% Warrant Satisfied?	Notes and Comments: *Known error: if Speed Limit < 45mph, it may not s passes at 70%.
Warrant 1, Eight-Hour Vehicular Volume	Yes	No	
Warrant 2, Four-Hour Vehicular Volume	Yes	No	
Warrant 3, Peak Hour	Yes	No	Signals installed under Warrant 3 should be traffic actuated.
For Warrants 1-3, new ODOT signals must be based off of 100% volume thresholds (TEM 402-3.2)			
Warrant 4, Pedestrian Volume	No		If this warrant is met, and a traffic control signal is justified by an engineering study, the traffic control signal shall be equipped with pedestrian signal heads complying with the provisions set forth in Chapter 4E of the OMUTCD.
Warrant 5, School Crossing	No		N/A
Warrant 6, Coordinated Signal System	No		(Shall not be used as the sole warrant in the anal
Warrant 7, Crash Experience	Yes	No	If this is the sole warrant, signal must be semi-actuated devices which provide proper coordination if installed at a within a coordinated system and normally should be f actuated if installed at an isolated intersector
Warrant 8, Roadway Network	No		(Shall not be used as the sole warrant in the anal
Warrant 9, Intersection Near a Grade Crossing	No		Figure 4C-9
Multi-Way Stop Warrant	Yes	Yes	May be used as an interim measure if traffic signal wa satisfied.

**The satisfaction of a traffic signal warrant or warrants shall not in itself require the installation of a traffi
signal.**

If no warrants are satisfied, additional options may be considered:

1. An engineering study, performed by a firm prequalified by ODOT for signal design, if approved by the ODOT
may be used to justify a new signal installation or retention of an existing signal that otherwise does not meet th
published warrants. An example of such an instance is a traffic signal in proximity to a railroad crossing that ser
reduce queuing across the tracks.
2. According to TEM 402-2, If the actual turning movement counts fail to satisfy a signal warrant, it may be accep
use traffic volumes projected to the second year after project completion. The **Modeling and Forecasting Sec**
should provide the projected traffic volumes.
3. A pedestrian hybrid beacon may be considered for installation to facilitate pedestrian crossings at a location
not meet traffic signal warrants (see Chapter 4C of TEM) or at a location that meets traffic signal warrants unde
4C.05 and/or 4C.06 but a decision is made to not install a traffic control signal. **Please fill inputs on PHB Scoli**
and submit to ODOT.

Considerations such as geometrics and lack of sight distance generally have not been accepted in lieu of satisf
warrants. These considerations may allow an otherwise unwarranted traffic signal to be retained at **100 percent**
cost. Please review TEM 402-4 for details.

Conclusion: **Do Not Install New Traffic Signal**

Notes: