

## SEPTEMBER 2025 PROGRAMMATIC



D11 Proj.: HOL-39-14.16 PID 122470

D11 Proj.: HOL-39-17.23 PID 123599



Department of  
Transportation

This presentation will provide an overview of the subject project that will be placed on the upcoming programmatic selection for consultant design services.

## HOL-39-(17.16)(17.23) PID 122470 & 123599

- Proj. Description: Design the replacement for bridges:
  - HOL-39-17.16 SFN 3800512
  - HOL-39-17.23 SFN 3800547
- Separate plans will be developed simultaneously and potentially sold as a Part 1/Part 2 contract.
- The Department will complete the topographic survey for both projects and provide to the selected consultant at the Scope meeting.



The project will replace bridge HOL-39-17.16 PID 12247 & HOL-39-17.23 PID 123599 (SFN 3403246) carrying State Route 39 over Kilbuck Creek and the Holmes County Trail.

## AVAILABLE PROJECT INFORMATION

- Some project information is available at the following FTP site:
  - [https://ftp.dot.state.oh.us/pub/Districts/D11/122470\\_and\\_123599/](https://ftp.dot.state.oh.us/pub/Districts/D11/122470_and_123599/)
  - The PIP will be released through SAFE on the programmatic scheduled date
  - D11 does not release the PIP early
  - All information on the FTP site is subject to change, please review the information in SAFE to create your LOI

3 | Proj. HOL-39-17.16 PID 12247 & HOL-39-17.23 PID 123599

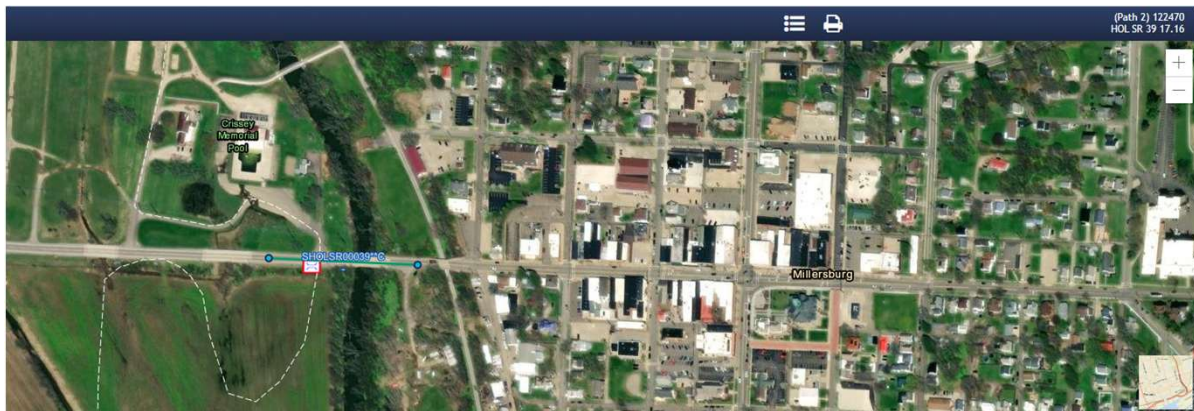


Department of  
Transportation



Additional project information is available on the District 11 ftp site, at the link shown on your screen. The Project Initiation Package document, along with a more complete and detailed scope of work will be released through The ODOT Scope and Fee System (or SAFE) at the request for LOIs. All information on the FTP site is subject to change. Ensure you review the ftp site and the information in SAFE before completing your LOI for this project.

## ELLIS MAPPING



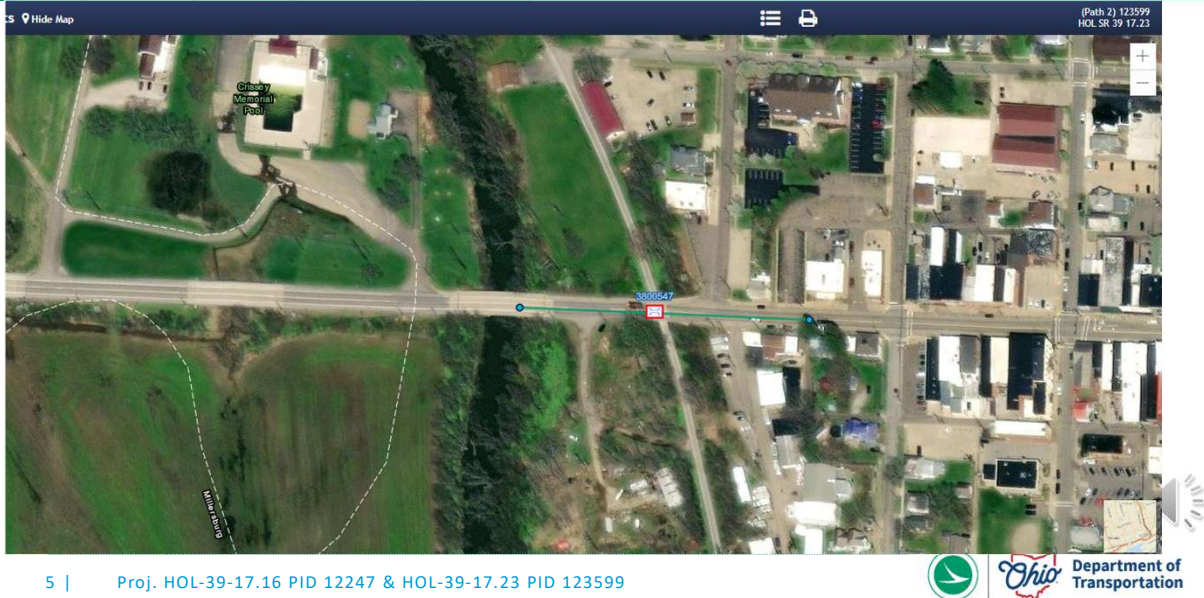
4 | Proj. HOL-39-17.16 PID 12247 & HOL-39-17.23 PID 123599



Department of  
Transportation

Here is an image showing the anticipated project limits from ODOT's Ellis application for PID 122470. The project will follow the existing horizontal and vertical alignments as much as practical.

## ELLIS MAPPING



Here is an image showing the anticipated project limits from ODOT's Ellis application for PID 123599. The project will follow the existing horizontal and vertical alignments as much as practical.

## PROJECT SCOPE

- The major items of work include:
  - HOL-39-1716 (SFN 3800512)
    - Replace three span steel beam bridge new structure
    - Soil Borings required
    - Utility (aerial) relocation anticipated
    - Maintenance of Traffic via One Lane –Two Way operation via signalized closure of one lane of a two-lane highway
  - HOL-39-1723 (SFN 3800547)
    - Replace single span steel beam bridge new structure.
    - Structure Type Study to investigate buried structures and beam bridges
    - Soil Borings required
    - Utility (aerial) relocation anticipated
    - Detour SR 39 for Maintenance of Traffic

6 | Proj. HOL-39-17.16 PID 12247 & HOL-39-17.23 PID 123599



Department of  
Transportation



The major scope items are listed here. An updated and more complete list will be released in SAFE at the beginning of the LOI process.

## ADDITIONAL SCOPE INFORMATION AND/OR ITEMS

- Driveway for public pool closest to the bridges will need to be closed during construction
- Anticipate 4F coordination for both projects
- Consultant will perform the floodplain coordination
- HOL-39-1723 SFN 3800547 has not been identified as historic and trail traffic will need to be maintained
- HOL-39-1716 SFN 3800512 recreational boat traffic will need to be maintained

7 | Proj. HOL-39-17.16 PID 12247 & HOL-39-17.23 PID 123599



Department of  
Transportation

The project will replace bridge HOL-39-17.16 PID 12247 & HOL-39-17.23 PID 123599 (SFN 3403246) carrying State Route 39 over Kilbuck Creek and the Holmes County Trail.

## CONSULTANT PREQUALIFICATIONS

- Level 1 bridge inspection
- Level 2 bridge design
- Non-complex roadway design
- Various Environmental
- Various Geotechnical
- Limited R/W

8 | Proj. HOL-39-17.16 PID 12247 & HOL-39-17.23 PID 123599



Department of  
Transportation



The consultant prequalifications required for this project are shown here.

## FIELD PHOTOS – HOL-39-1716



9 |



Department of  
Transportation

The following slides will show you some of the scoping field visit photos, to illustrate how the District arrived at the current scope of work. More photos are available on the ftp site shown earlier.

## FIELD PHOTOS – HOL-39-1716



10 |



Department of  
Transportation

## FIELD PHOTOS – HOL-39-1716



11 |



**Ohio** Department of  
Transportation

## FIELD PHOTOS – HOL-39-1716



12 |



Department of  
Transportation

## FIELD PHOTOS – HOL-39-1716

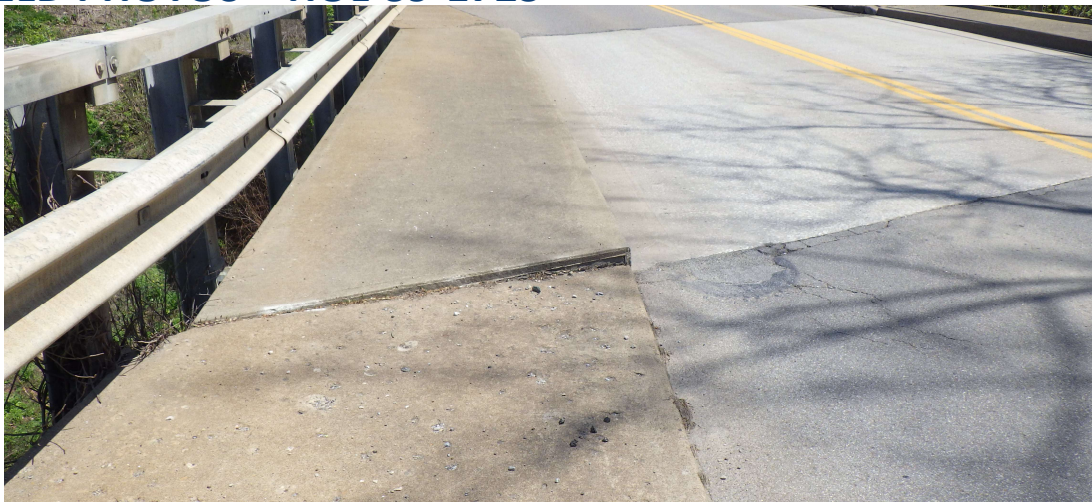


13 |



Department of  
Transportation

## FIELD PHOTOS – HOL-39-1723



14 |



**Ohio** Department of  
Transportation

## FIELD PHOTOS – HOL-39-1723



15 |



**Ohio** Department of  
Transportation

## FIELD PHOTOS – HOL-39-1723



16 |



**Ohio** Department of  
Transportation

## FIELD PHOTOS – HOL-39-1723



17 |



**Ohio** Department of  
Transportation

## FIELD PHOTOS – HOL-39-1723



18 |



**Ohio** Department of  
Transportation

## THANK YOU

- Additional photos are available on the FTP Site
- Thank you for watching this video presentation for Projs. HOL-39-17.16 PID 122470 and HOL-39-17.23 PID 123599.
- District 11 appreciates your interest in partnering with us for a successful project



19 | Proj. HOL-39-17.16 PID 12247 & HOL-39-17.23 PID 123599



Department of  
Transportation

Thank you for watching this video. Visit the ftp site for more photos and information. Please remember that changes to this information and the detailed scope of work are possible. Review the information in SAFE prior to submitting your LOI.



**Department of  
Transportation**

[transportation.ohio.gov](http://transportation.ohio.gov)

**THANK YOU**