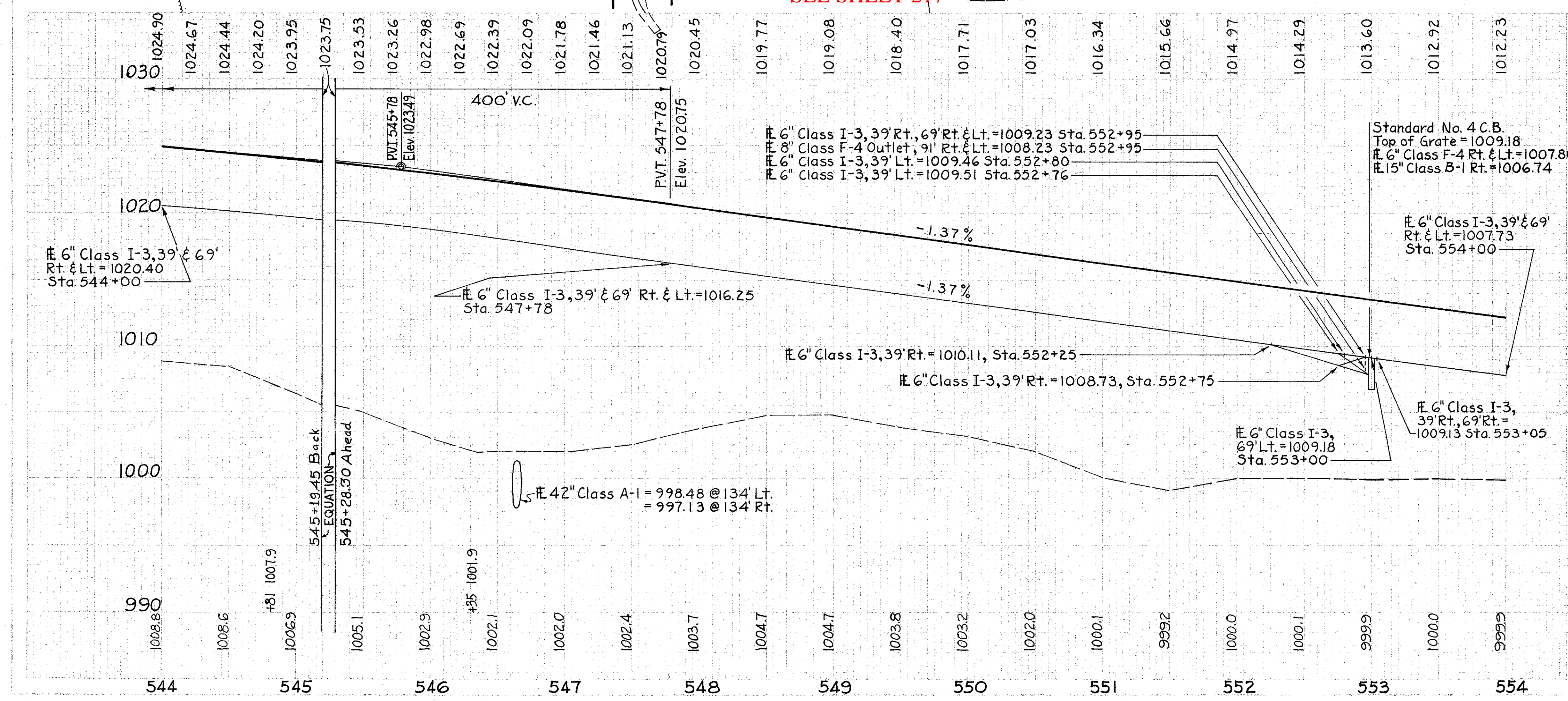


Curve #6  
P.I. = 537+92.14  
Δ = 04°-51'-06"  
D<sub>c</sub> = 00°-20'-00"  
R = 17,188.73'  
L = 1,455.50'  
T = 728.19'  
E = 15.42'

Ref. P.O.T. Sta. 548+00  
16" Apple  
#I-71  
3" Birch  
4" Maple  
B.M. \*C-6 Elev. 1006.85  
Lag Bolt on E. Side of 22" Tree  
285' W. of Sta. 550+30



CFN 180710112  
SLM 1.12, 42"  
SEE SHEET 217

SLM 1.25, 15"  
SEE SHEET 79

ESTIMATED QUANTITIES

REF. NO.	STATION TO STATION	SIDE	Class I-3		Class F-4		Class B-1		Masonry		Pipe		I-8		I-10		I-15		E-3		L-10		SEE SHEET NO.
			Sec. 42	Shallow	6"	8"	15"	6"	8"	15"	Each	Each	Each	Each	Each	Each	Each	Each	Each	Each	Each	Each	
1-D	544+00 to 552+95	Lt.																					
2-D	544+00 to 552+75	Lt.																					
3-D	544+00 to 552+95	Rt.																					
4-D	544+00 to 552+95	Rt.																					
5-D	552+80 to 554+00	Lt.																					
6-D	552+80 to 554+00	Lt.																					
7-D	553+05 to 554+00	Lt.																					
8-D	553+05 to 554+00	Rt.																					
9-D	546+00 to 547+25	Lt.																					
10-D	545+00 to 547+50	Rt.																					
11-D	545+00 to 553+00	Med.																					
12-D	546+66 to 553+00	Med.																					
13-D	546+66 to 553+00	Rt.																					
1-R	544+00 to 554+00	Lt.																					
2-R	544+00 to 554+00	Rt.																					
3-R	544+00 to 554+46.5	Med.																					
TOTALS																							