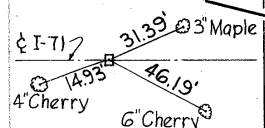
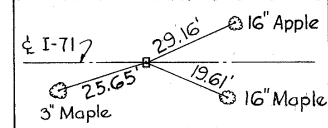


Ref. P.O.T. Sta. 613+41.08



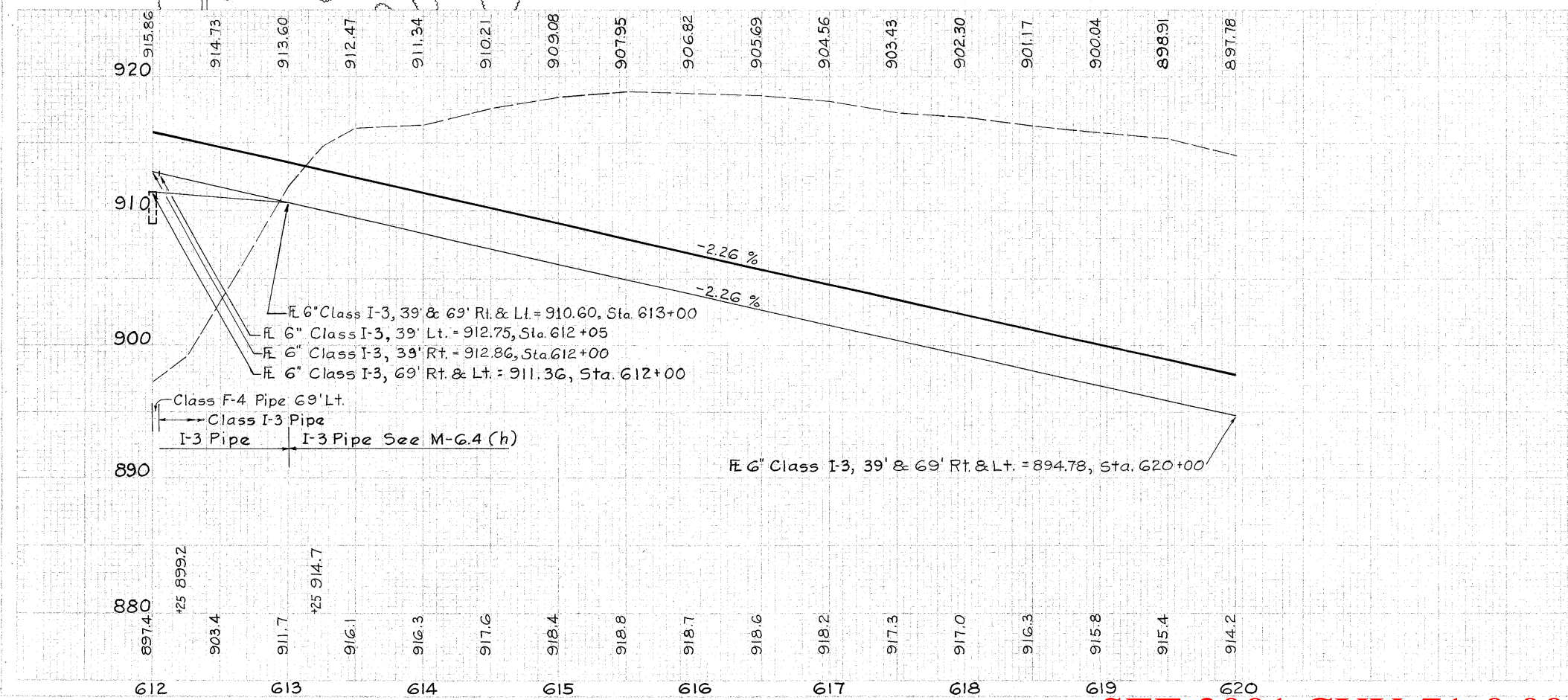
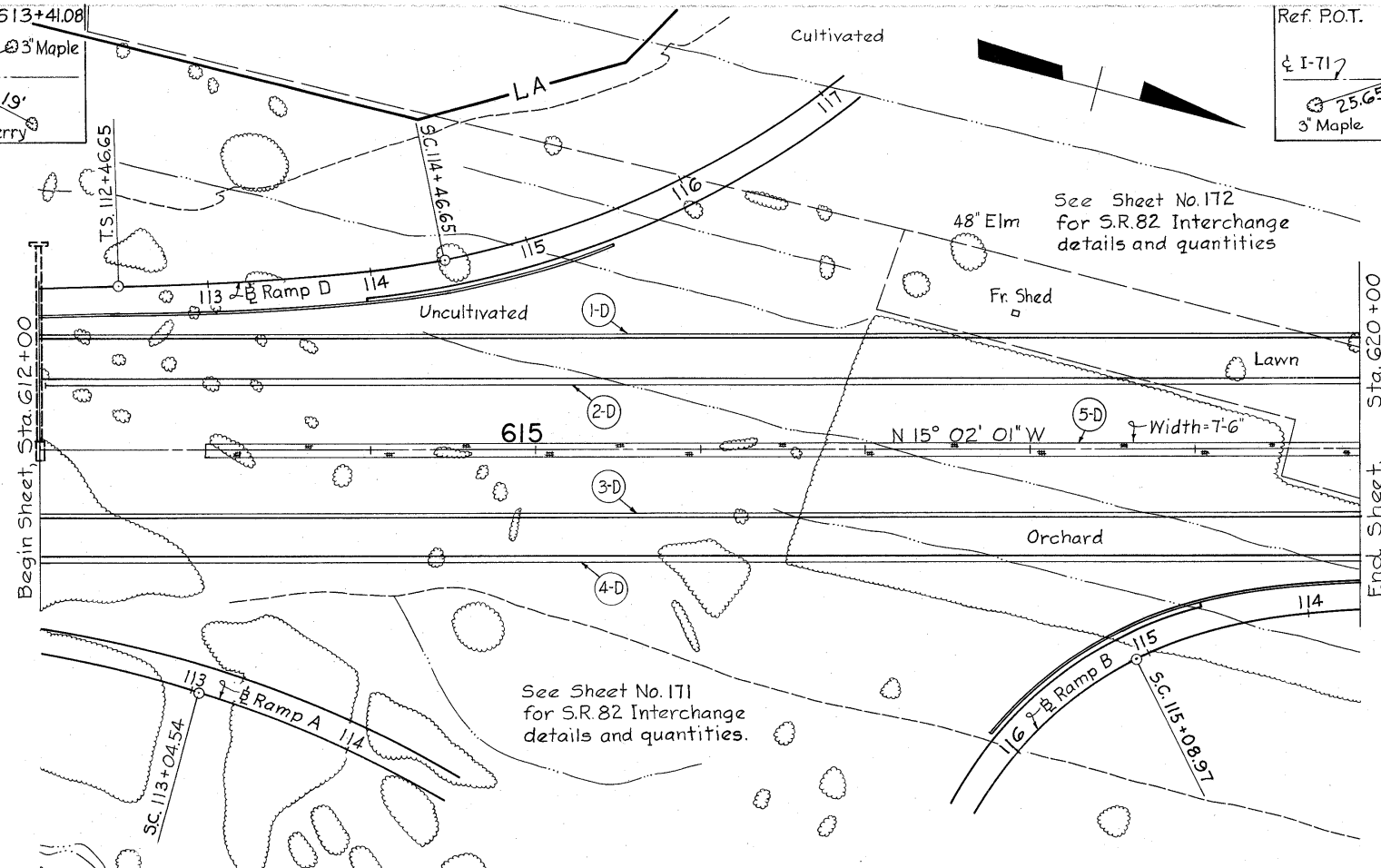
Ref. P.O.T. Sta. 616+85.23



CUYAHOGA COUNTY
MED-42-26.17
CUY-42- 0.00

2	OHIO	I-71-5(5)233
---	------	--------------

49
302



SEE SHEET NO.	ESTIMATED QUANTITIES	REF. NO.	STATION TO STATION	SIDE	CLASS	LENGTH	DEPTH	MARKING	TOTALS
		I-1	612+00 to 620+00	Lt.	Class I-3 Pipe	95	700		395
		I-1	612+00 to 620+00	Rt.	Class I-3 Pipe	100	700		2800
		I-1	612+00 to 620+00	Rt.	Class I-3 Pipe	100	700		5
		I-1	612+00 to 620+00	Med.	Class I-3 Pipe	5	583		583
TOTALS									583

SEE 2001 CUY-71-0.00 PLANS FOR MODIFICATIONS TO STORM SEWERS

Sta. 612+00 to Sta. 620+00