

FED. NO. DIVISION	STATE	PROJECT	283
2	OHIO	I-71-5(15)233	302

MEDINA COUNTY
 CUYAHOGA COUNTY
 MED. -42-26.63
 CUY. -42- 0.00
 LIMITED ACCESS
 SCALE: 1"=50'

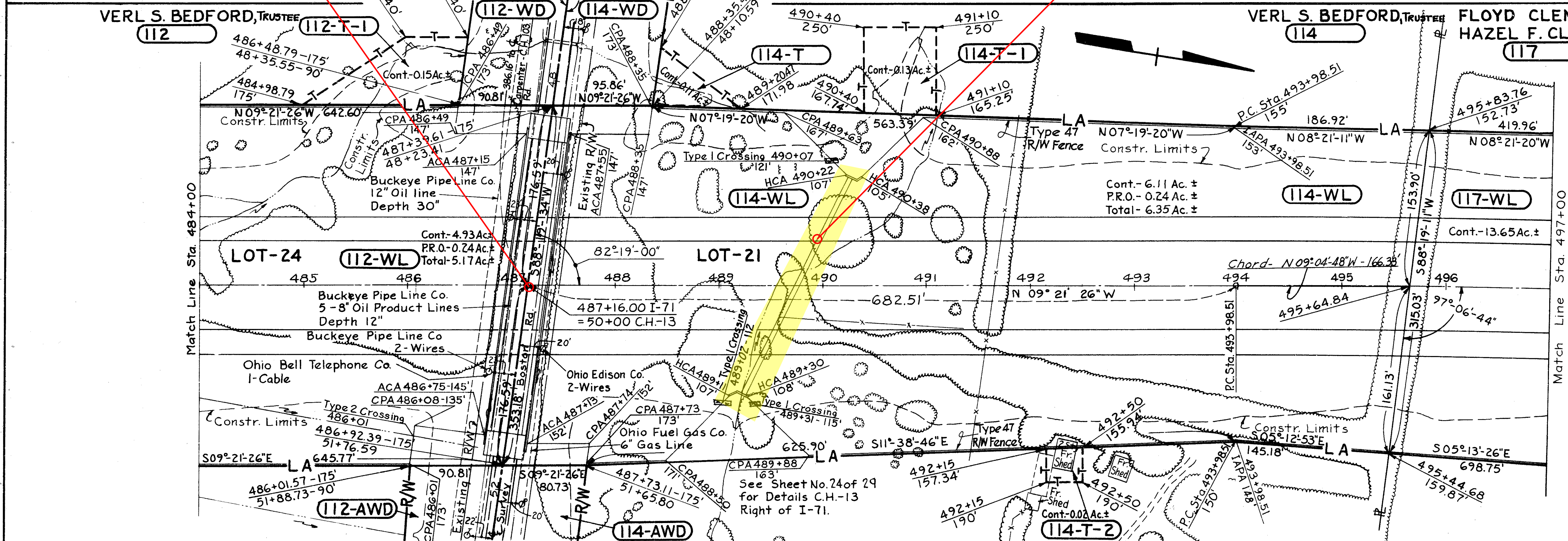
SOLD AS MED/CUY-42-26.17/0.00

COUNTY LINE
 SLM 0.00=MM 228.71

CFN 180710005
 SLM 0.05, 60"
 SEE SHEETS 36
 AND 214

See Sheet No. 23 of 29
 for Details C.H.-13
 Left of I-71.

ESTIMATED QUANTITIES
 I-25-Woven Wire Fence, Type 47- 2,704 Ft.



Curve Data
 P.C. 493+98.51
 P.T. 506+01.01
 $\Delta = 04^{\circ}00'30''$
 $D_c = 00^{\circ}20'00''$
 $R = 17,188.73'$
 $L = 1,202.50'$
 $T = 601.50'$
 $E = 10.52'$

REVISIONS
 Completed 9-13-63