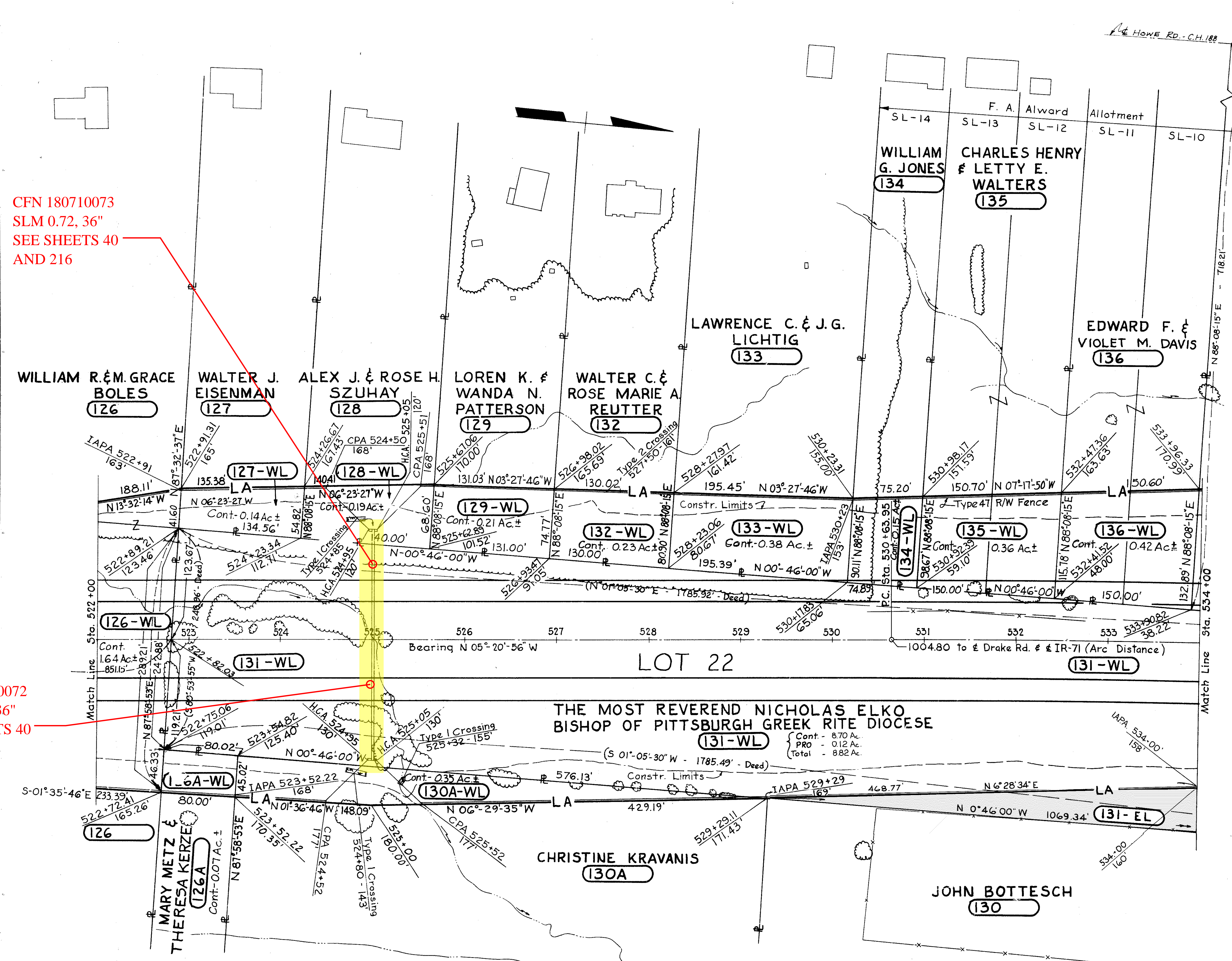


FED. RD. DIVISION	STATE	PROJECT	286
2	OHIO	I-71-5(15) 233	302

CUYAHOGA COUNTY
 MED. - 42 - 26.63
 CUY. - 42 - 0.00
 LIMITED ACCESS
 SCALE: 1" = 50'

SOLD AS MED/CUY-42-26.17/0.00
 CITY OF STRONGSVILLE
 Lot No. 22
 T-5N R-14W

CFN 180710073
 SLM 0.72, 36"
 SEE SHEETS 40
 AND 216



CFN 180710072
 SLM 0.72, 36"
 SEE SHEETS 40
 AND 216

Curve Data
 PC 530+63.95
 PT. 545+19.45 Bk.
 = PT. 545+28.30 Ahd.
 $\Delta = 04^{\circ}51'06''$
 $D_c = 00^{\circ}20'00''$
 $R = 17,188.73'$
 $L = 1,455.50'$
 $T = 728.19'$
 $E = 15.42'$

ESTIMATED QUANTITIES
 I-25 Woven Wire Fence, Type 47 - 2,465 Ft.

REVISIONS
 Completed 9-13-63
 Added Parcel 131EL 8-14-68