

FED. RD. DIVISION	STATE	PROJECT	293 302
2	OHIO	I-71-5(15)233	

CITY OF STRONGSVILLE
Lots, No. 35 and 26
T-5N R-14W

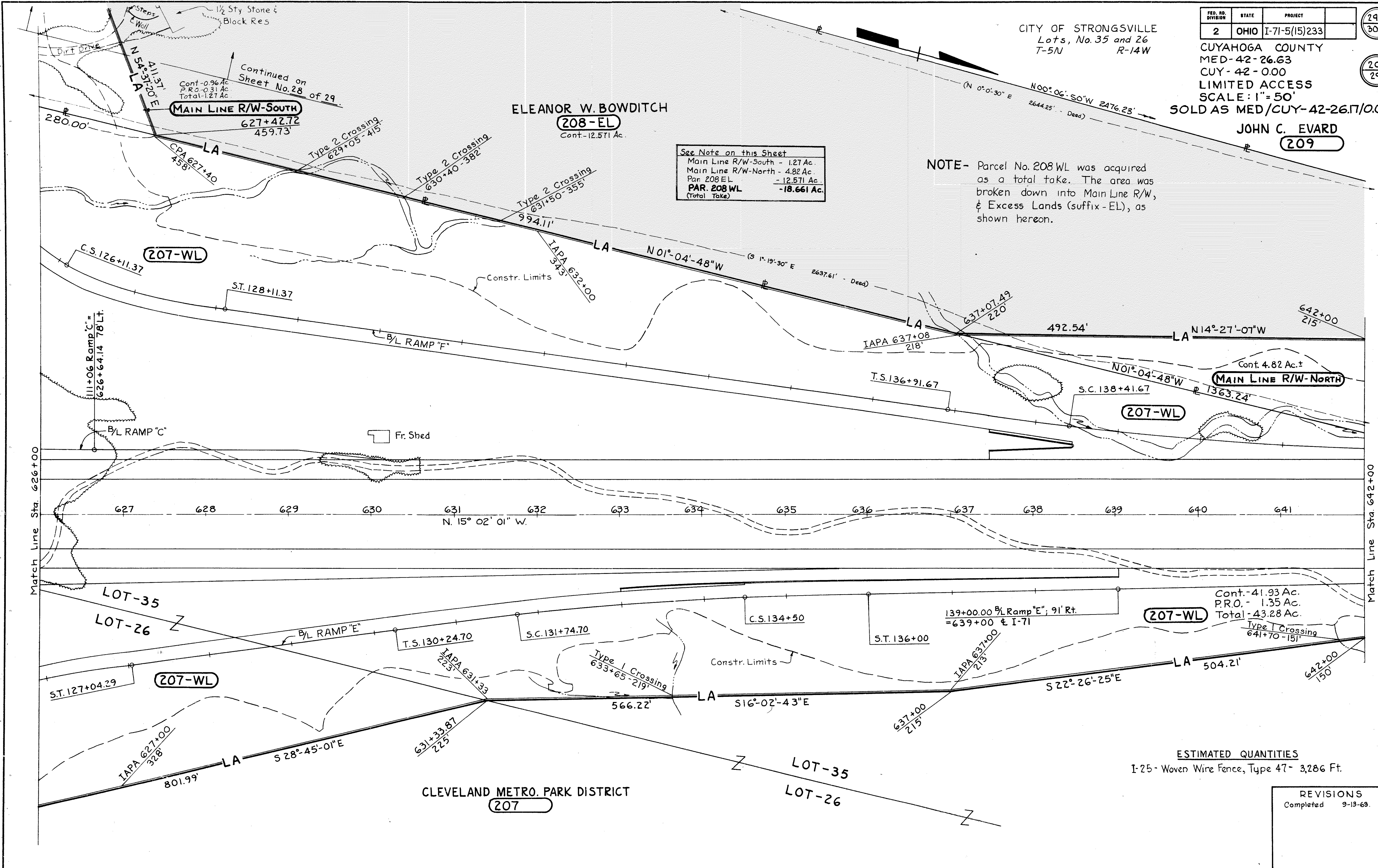
CUYAHOGA COUNTY
MED-42-26.63
CUY-42-0.00
LIMITED ACCESS
SCALE: 1"=50'
SOLD AS MED/CUY-42-26.17/0.00

JOHN C. EVARD
209

ELEANOR W. BOWDITCH
208-EL
Cont. - 12.571 Ac.

See Note on this Sheet
Main Line R/W-South - 1.27 Ac.
Main Line R/W-North - 4.82 Ac.
Par. 208 EL - 12.571 Ac.
PAR. 208 WL - 18.661 Ac.
(Total Take)

NOTE - Parcel No. 208 WL was acquired as a total take. The area was broken down into Main Line R/W, & Excess Lands (suffix - EL), as shown hereon.



ESTIMATED QUANTITIES
1-25 - Woven Wire Fence, Type 47 - 3,286 Ft.

REVISIONS
Completed 9-13-63.