

FED. NO.	STATE	PROJECT	
2	OHIO	I-71-5(15)233	

294  
302

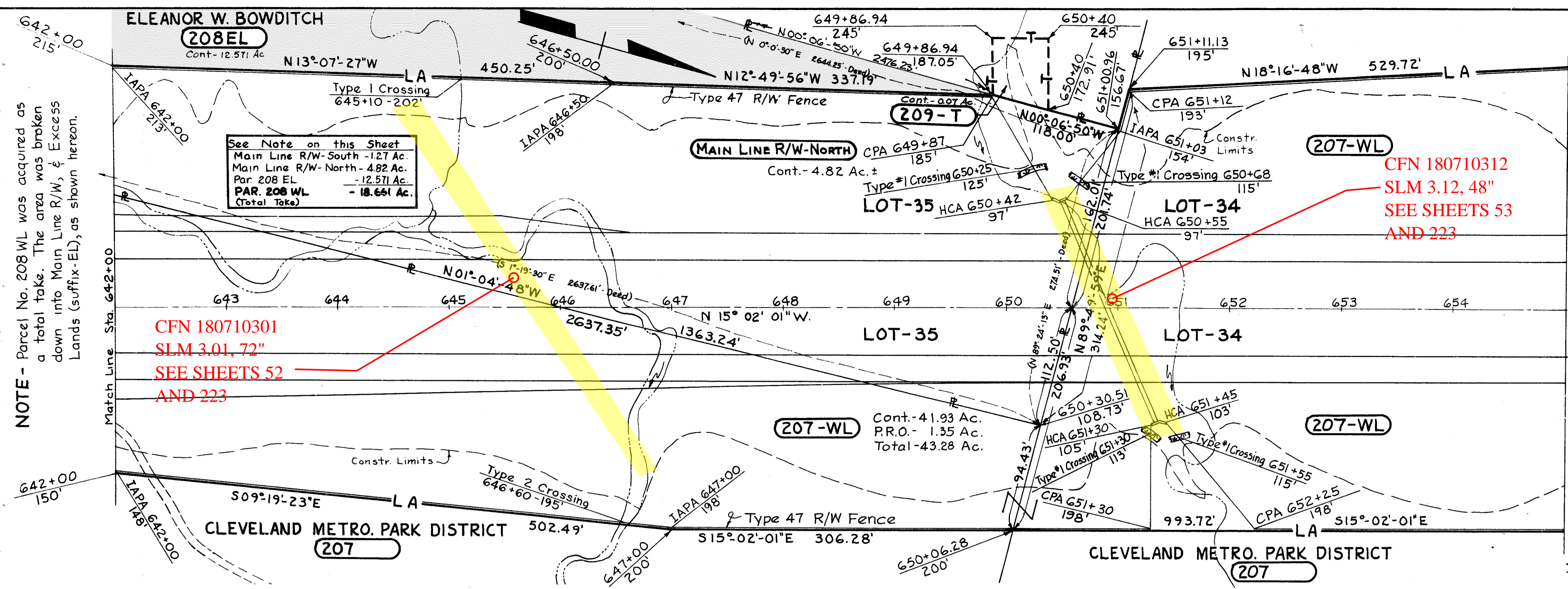
CUYAHOGA COUNTY  
MED-42-26.63  
CUY-42-0.00  
LIMITED ACCESS  
SCALE: 1"=50'  
SOLD AS MED/CUY-42-26.17/0.00

CITY OF STRONGSVILLE  
Lots, No. 35 and 34  
T-5N R-14W

CUYAHOGA COUNTY  
CUY-071-00.00  
PID 0.170  
f.k.a.  
MED/CUY-042-26.63/00.00

SOLD AS  
MED/CUY-042-26.17/00.00

ESTIMATED QUANTITIES  
I-25 Woven Wire Fence Type 47-5,602 Ft.



NOTE - Parcel No. 208 WL was acquired as a total take. The area was broken down into Main Line R/W, & Excess Lands (suffix-EL), as shown hereon.

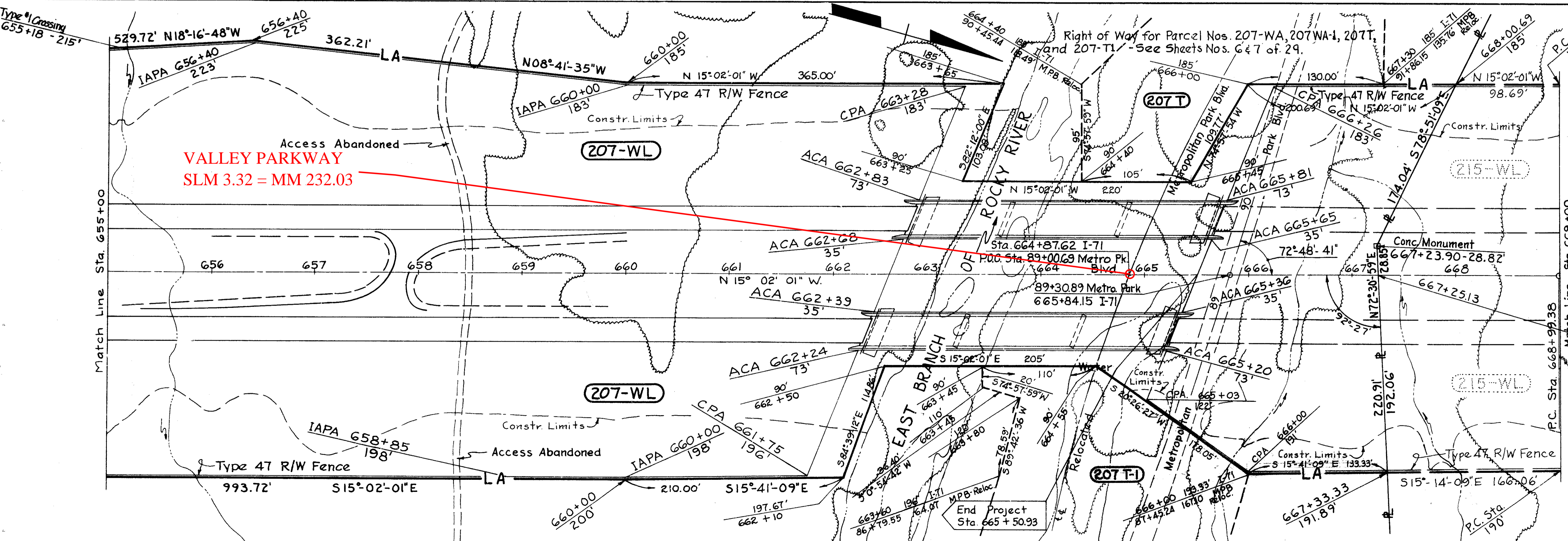
See Note on this Sheet  
Main Line R/W-South - 1.27 Ac.  
Main Line R/W-North - 4.82 Ac.  
Par. 208 EL - 12.571 Ac.  
PAR. 208 WL - 18.661 Ac.  
(Total Take)

CFN 180710301  
SLM 3.01, 72"  
SEE SHEETS 52  
AND 223

CFN 180710312  
SLM 3.12, 48"  
SEE SHEETS 53  
AND 223

CLEVELAND METRO. PARK DISTRICT  
207

CLEVELAND METRO. PARK DISTRICT  
207



VALLEY PARKWAY  
SLM 3.32 = MM 232.03

LLOYD J. SURRARRER  
215

Curve Data  
P.C. 668+99.38  
P.T. 694+25.27  
 $\Delta = 11^\circ-47'-15''$   
 $Dc = 00^\circ-28'-00''$   
 $R = 12,277.67'$   
 $T = 1,267.42'$   
 $L = 2,525.89'$   
 $E = 65.24'$

NOTE - Par. 215 WL to be purchased under Contract No. CUY-42-3.41.

End Acquisition  
Sta. 667+25.13

REVISIONS  
Completed 9-13-63  
10/10/63 - Changed Par. 207.