

FED. RD. DIVISION	STATE	PROJECT	
2	OHIO	I-71-5 (15)233	

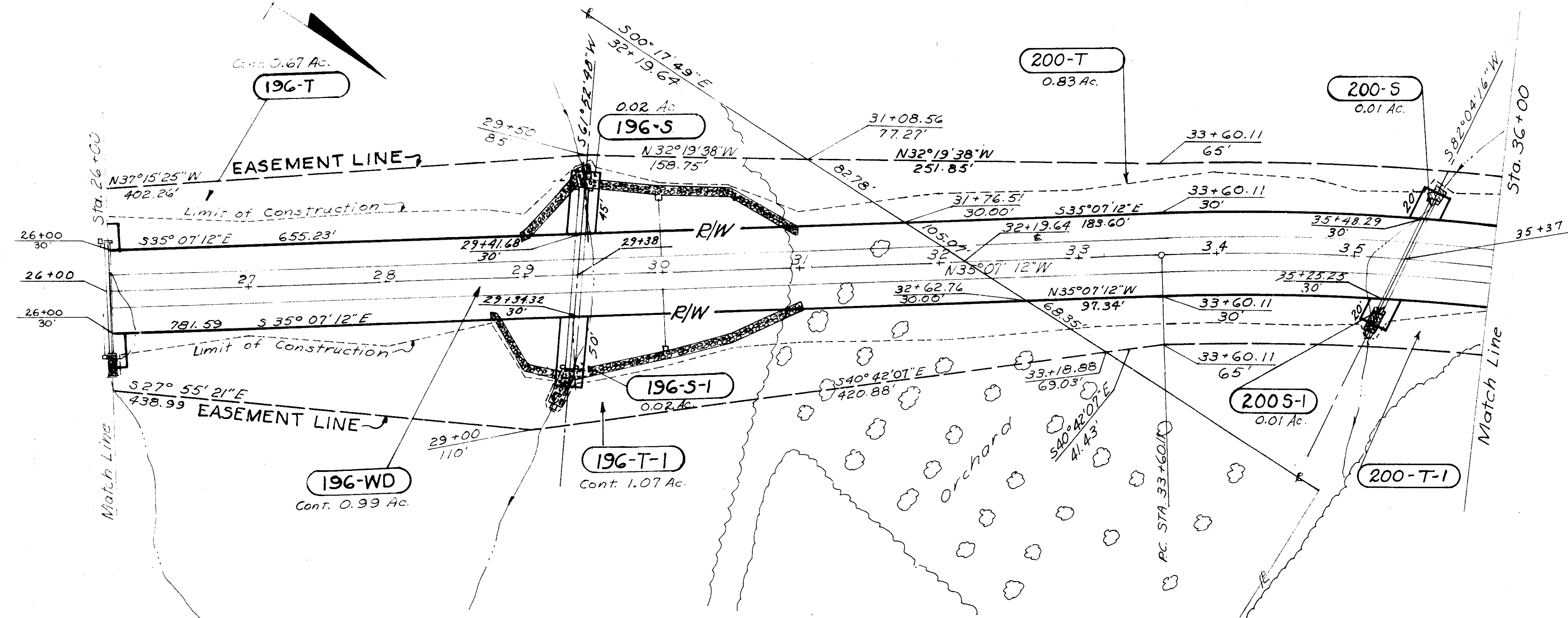
300  
302

CUYAHGA COUNTY  
CUY-071-00.00  
PID 0.170  
f.k.a.  
MED/CUY-042-26.63/00.00

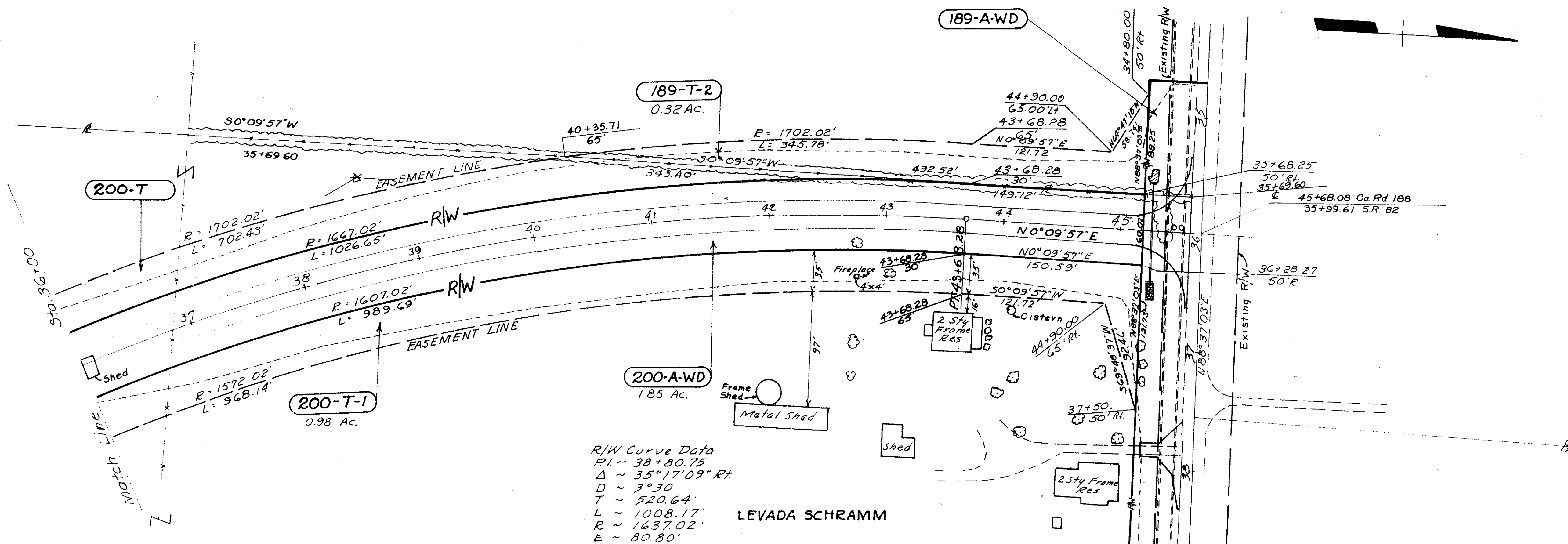
27  
29

SOLD AS  
MED/CUY-042-26.17/00.00  
CITY OF STRONGSVILLE  
LOTS NO. 37, 36, 25 and 24  
T-5N R-14W

LEVADA SCHRAMM



DOROTHY HINCHCLIFF



R/W Curve Data  
PI ~ 38+80.75  
Δ ~ 35°17'09" Rt  
D ~ 9°30  
T ~ 520.64'  
L ~ 1008.17'  
R ~ 1637.02'  
E ~ 80.80'

LEVADA SCHRAMM

REVISIONS  
Howe Rd. Relocated 10-21-63