

PLOT SUBMITTED 07-AUG-1998 09:17
 PLOTTED BY: fkonopka
 PLOTTED: 08/11/98 10:45 AM
 PLOT FILE: sberp\p1d084598.dgn

TEMPORARY BENCH MARK
 Sta. 215+08.30, Sprague Road, 30.8' Rt.
 R.R. Spike in North Side of
 Power Pole #145861
 Elev. 815.26

CFN 180710505
 SLM 5.00, 42"
 SEE SHEET 180

CFN 180710522
 SLM 5.22, 48"
 SEE SHEET 182

SLM 5.23, 15"
 SEE SHEET 182

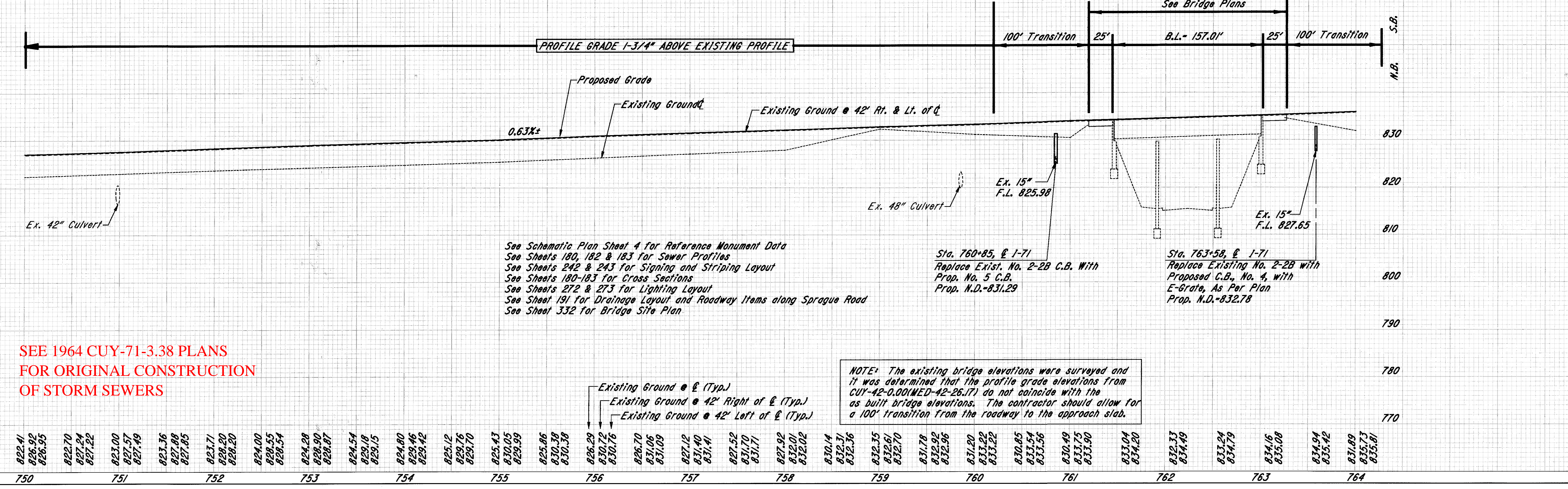
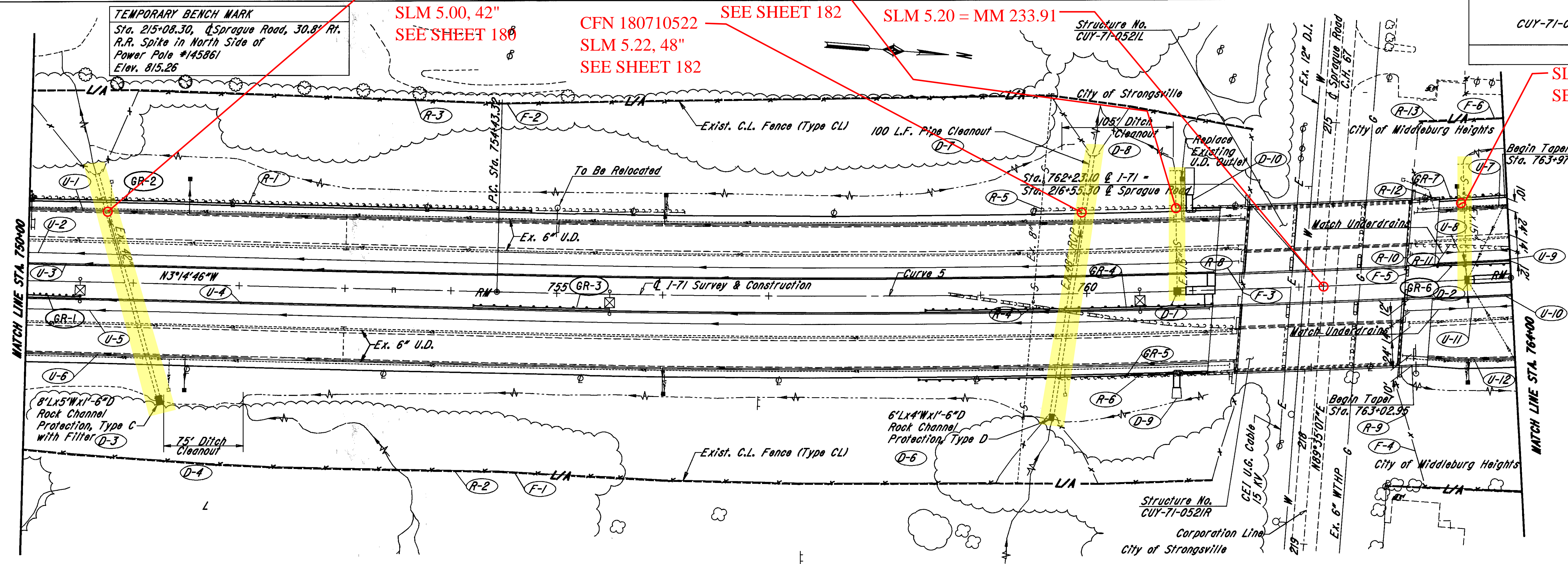
SPRAGUE ROAD
 SLM 5.20 = MM 233.91

CUY-71-0.00

OHIO
 FHWA REGION 5
 FEDERAL PROJECT
 116
 361

SLM 5.29, 15"
 SEE SHEET 183

Curve 5 Data
 P.I. Sta. 763+76.54
 Dc = 0°28'00"
 Δ = 8°41'36"
 R = 12277.67'
 T = 933.22'
 L = 1862.86'
 E = 35.42'
 Ch = 1861.07'



See Schematic Plan Sheet 4 for Reference Monument Data
 See Sheets 180, 182 & 183 for Sewer Profiles
 See Sheets 242 & 243 for Signing and Striping Layout
 See Sheets 180-183 for Cross Sections
 See Sheets 272 & 273 for Lighting Layout
 See Sheet 191 for Drainage Layout and Roadway Items along Sprague Road
 See Sheet 332 for Bridge Site Plan

Sta. 760+85, & I-71
 Replace Exist. No. 2-2B C.B. With
 Prop. No. 5 C.B.
 Prop. N.D.=831.29

Sta. 763+58, & I-71
 Replace Existing No. 2-2B with
 Proposed C.B., No. 4, with
 E-Grate, As Per Plan
 Prop. N.D.=832.78

NOTE: The existing bridge elevations were surveyed and it was determined that the profile grade elevations from CUY-42-0.00(MED-42-26.17) do not coincide with the as built bridge elevations. The contractor should allow for a 100' transition from the roadway to the approach slab.

SEE 1964 CUY-71-3.38 PLANS
 FOR ORIGINAL CONSTRUCTION
 OF STORM SEWERS

I-71 PLAN & PROFILE STA. 750+00 TO STA. 764+00