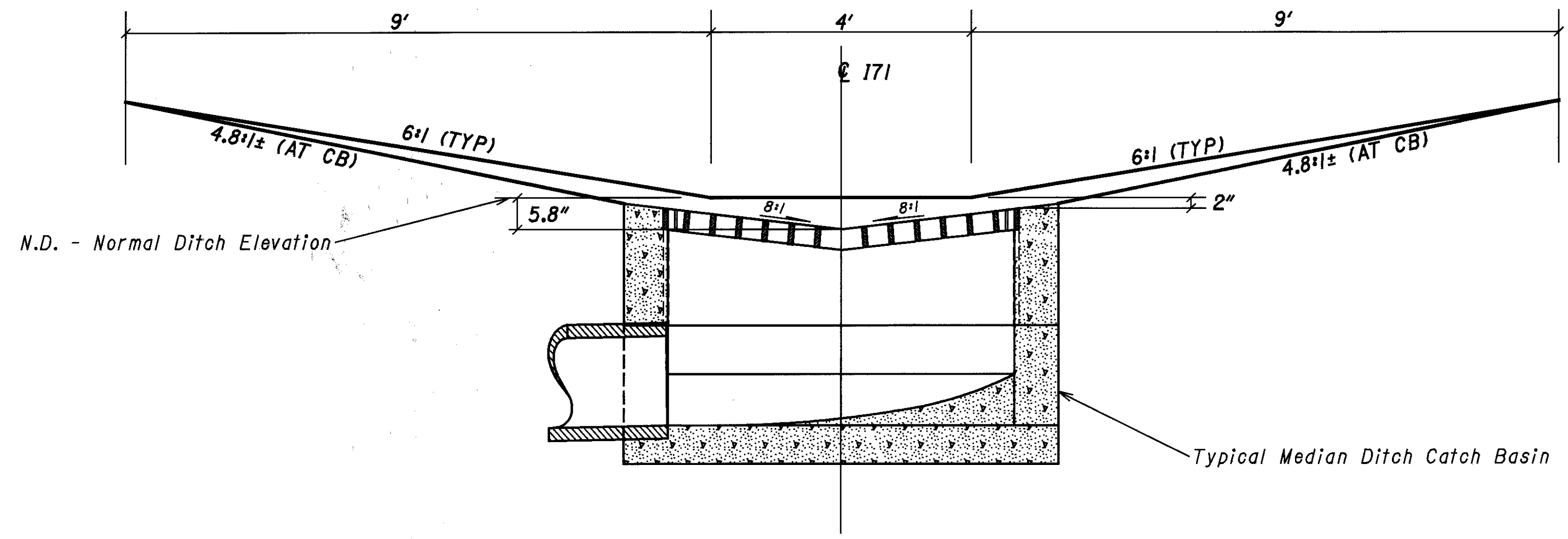


# MISCELLANEOUS DETAILS

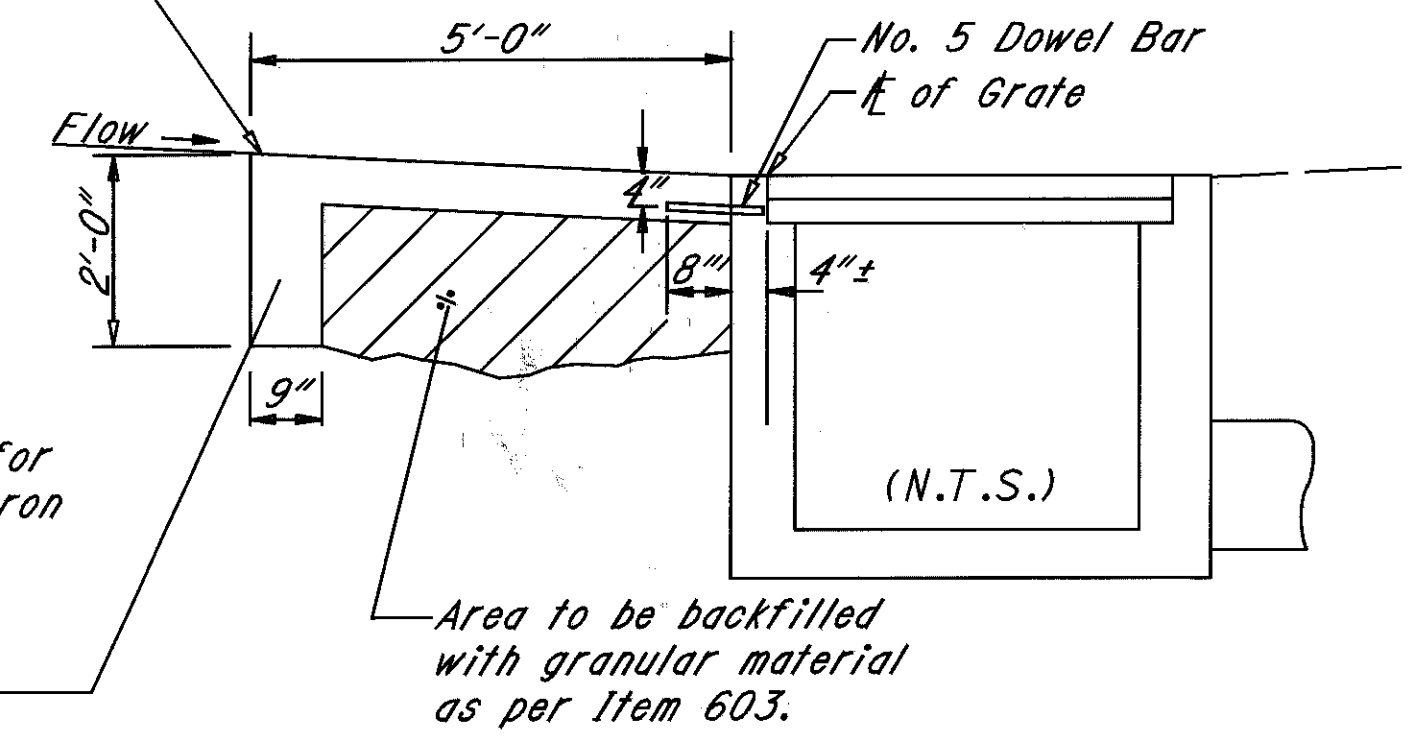


## BAR LOCATION DETAIL

CATCH BASIN NO. 4, 5, & 8, AS PER PLAN

Note: This detail shall be used for No. 4, No. 5 and No. 8 Catch Basins, as per plan. For details not shown see Std. Dwg. CB-4, CB-5, & CB-8.

For details not shown for concrete apron, see standard drawing for appropriate C.B.



Provide a cut-off wall for the full width of the apron along the upstream side only. Two cut-off walls will be required for catch basin in sags.

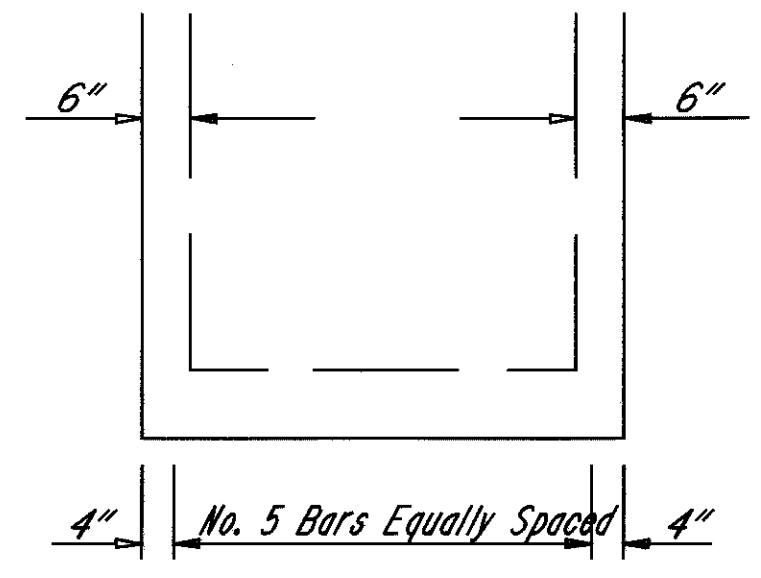
Area to be backfilled with granular material as per Item 603.

The requirements of Item 604 shall govern the replacement of the existing Catch Basin. The work shall include the removal and disposal of the existing Catch Basin and its subsequent replacement. The concrete apron shall be replaced and backfilled as shown here and in the pertinent standard drawing.

The unit price for each catch basin shall include the replacement of any connecting sewer pipes damaged during the removal or installation of the basin. The new pipe shall match the material type of the existing pipe and shall meet the requirements of Item 603.

Payment for the above work shall be included in the unit bid price for Item 604 Catch Basin, No. 4, 5, or 8, as per plan, and shall constitute full compensation for furnishing all material, labor, tools, and equipment incidental to complete this item of work.

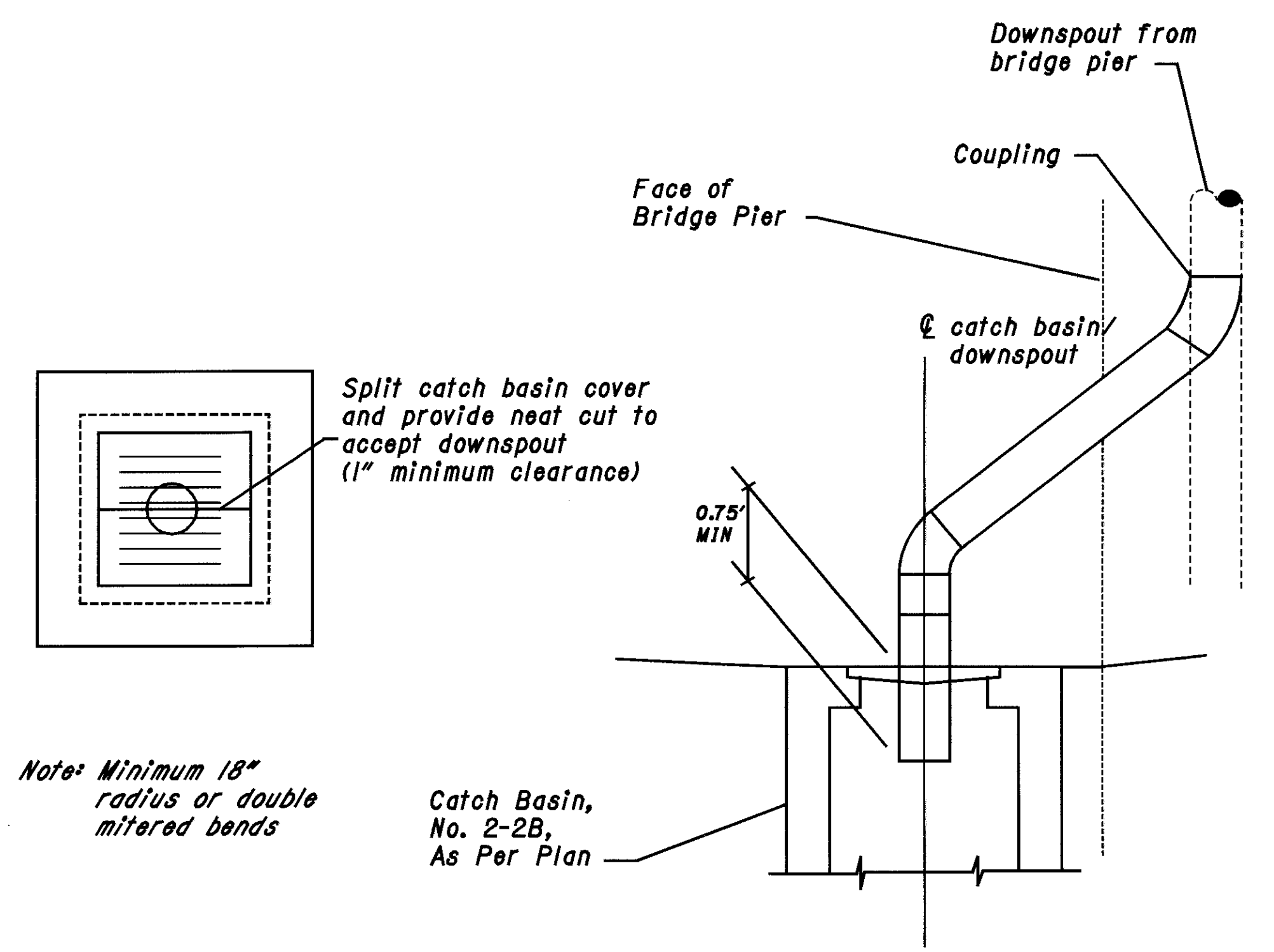
## CATCH BASIN NO. 4, 5 & 8 AS PER PLAN



The number of bars needed along each side of a No. 4 Catch Basin with a concrete apron is 7. For a No. 5 & 8 Catch Basin the number of bars needed along each side with a concrete apron is 4.

CATCH BASIN NO.	TOTAL # OF BARS FOR A	
	STD. APRON	SAG APRON
4	7	14
5	12	16
8	12	16

The furnishing and placing of steel for the 5/8" x 12" dowel bars shall be per 509 reinforcing steel. The dowel bars shall be epoxy coated per 509.10. The dowel bars shall be installed per 510 or cast into the basin. Bolt or inserts may be used. The catch basin shall be precast or cast-in-place concrete, brick or concrete block will not be permitted. The 6" concrete apron shall be reinforced per 601.04(3).



Note: Minimum 18" radius or double mitered bends

## CATCH BASIN AT OVERHEAD BRIDGE

### Item 604 - Catch Basin, No. 2-2B, As Per Plan

The unit bid price for this item shall include all of the modifications necessary to tie the existing downspouts into the proposed catch basin, as detailed above. The proposed downspout material shall match the material type of the existing downspout. This item shall also include any additional hardware necessary to securely attach the proposed downspout to the existing downspout. The connection method shall be approved by the project engineer prior to beginning work.

PLOT SUBMITTED: 05-AUG-1998 12:36  
 307MISC2.DGN  
 PLOTTED BY: fikonopka  
 PLOTTED: 12/03/94