

L-7

L-8

FED. RD. DIVISION	STATE	PROJECT
2	OHIO	I-71-5(11)236

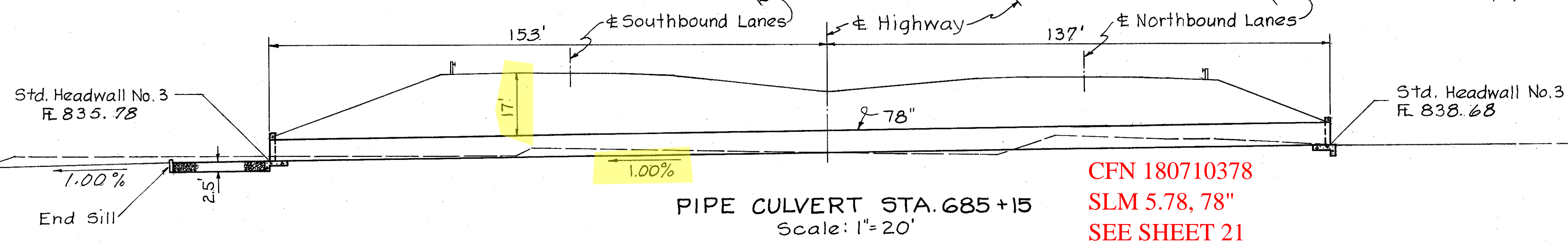
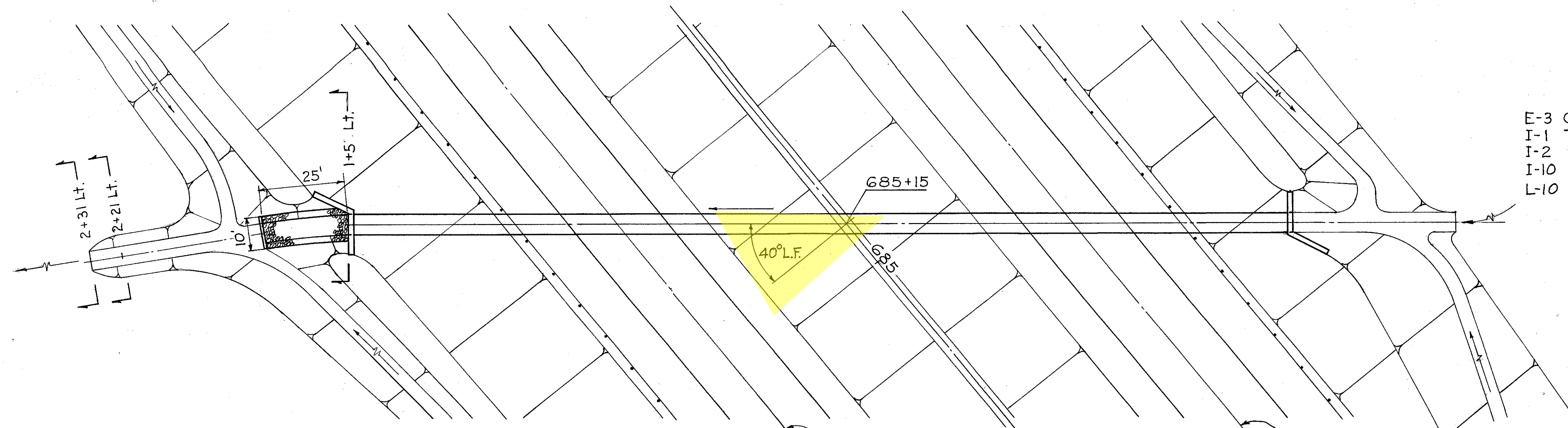
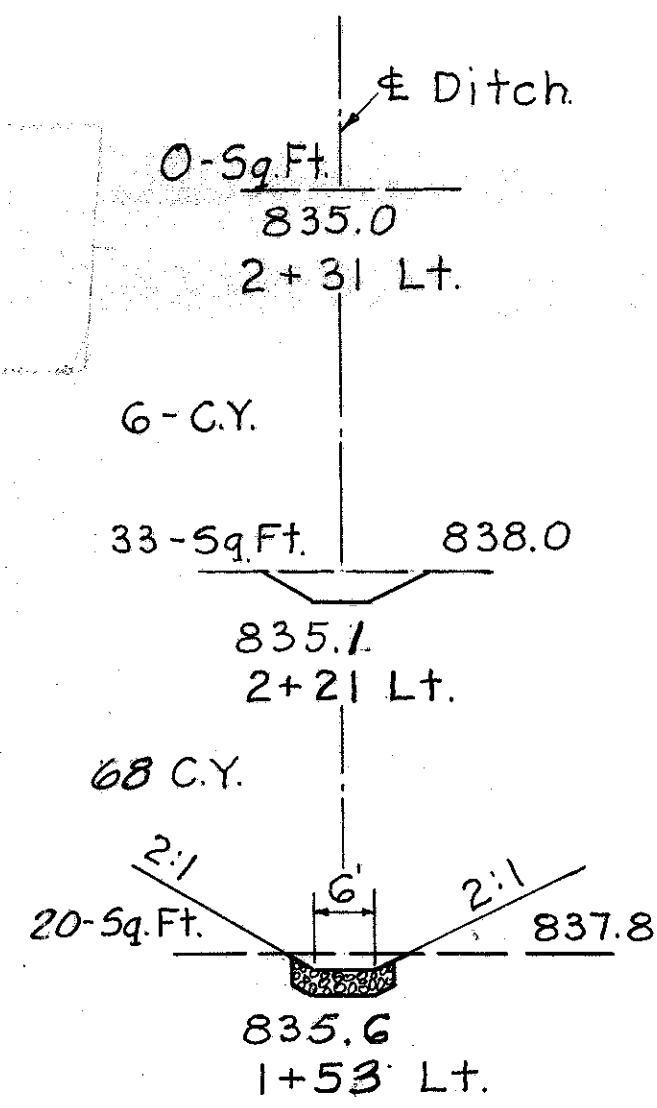
142
263

CUYAHOGA COUNTY
CUY-42-3.38

ESTIMATED QUANTITIES

E-3 Channel Excavation	74	C.Y.
I-1 78" Class A-1 Pipe Sec. M.G.G(c)	290	L.F.
I-2 Masonry	46.6	C.Y.
I-10 Dumped Rock Channel Protection	23	C.Y.
L-10 Sodding	13	S.Y.

Drainage Area = 381 Ac.
Q₅₀ = 400 CFS

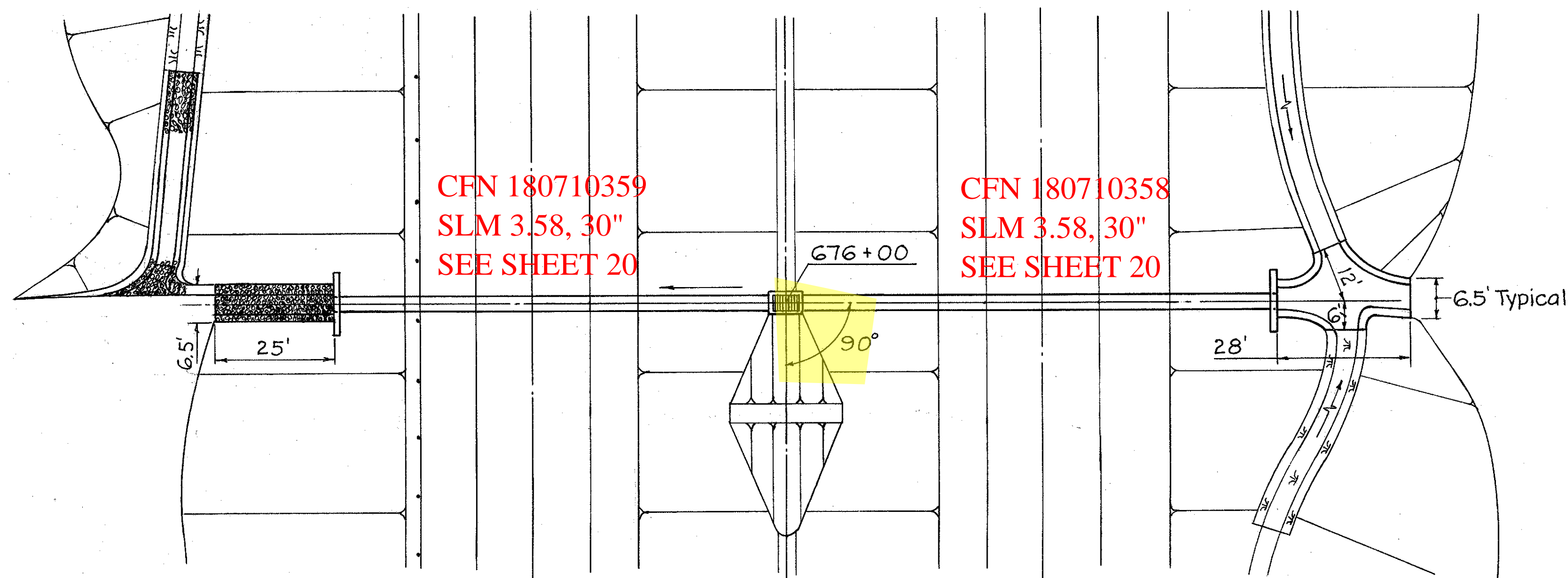


CFN 180710378
SLM 5.78, 78"
SEE SHEET 21

ESTIMATED QUANTITIES

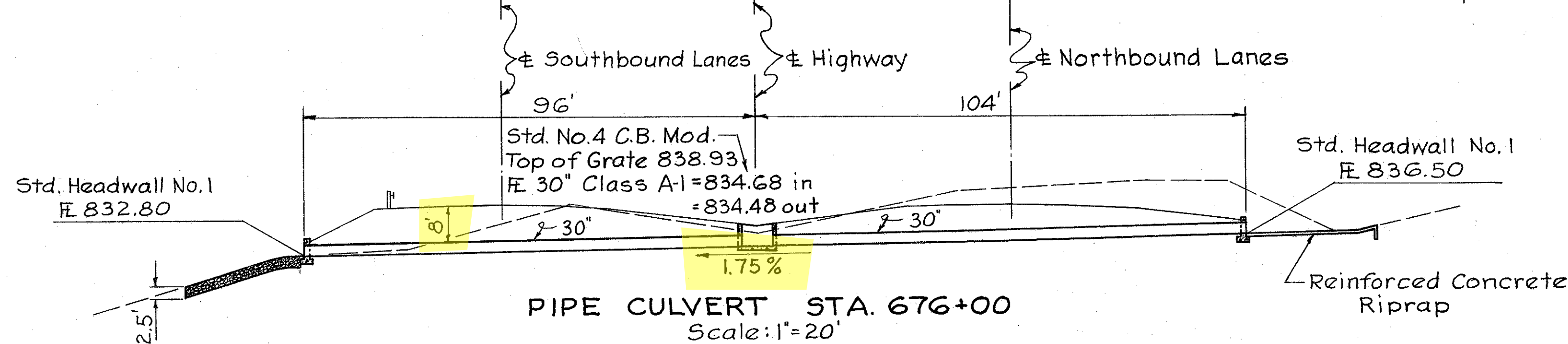
I-1 30" Class A-1 Pipe Sec. M.G.G(a) or M.G.8(b)	200	L.F.
I-2 Masonry	9.4	C.Y.
I-8 Std. No. 4 C.B. Modified	1	Ea.
I-10 Reinforced Concrete Riprap	35	S.Y.
I-10 Dumped Rock Channel Protection	16	C.Y.
L-10 Sodding	6	S.Y.

Drainage Area = 7.9 Ac.
Q₅₀ = 31 CFS



CFN 180710359
SLM 3.58, 30"
SEE SHEET 20

CFN 180710358
SLM 3.58, 30"
SEE SHEET 20



PIPE CULVERT STA. 676+00 & STA. 685+15