

SEE 2001 CUY-71-0.00 PLANS FOR MODIFICATIONS TO STORM SEWERS

CB REMOVED UNDER 2001 CUY-71-0.00. NEW CB INSTALLED AT 743+00

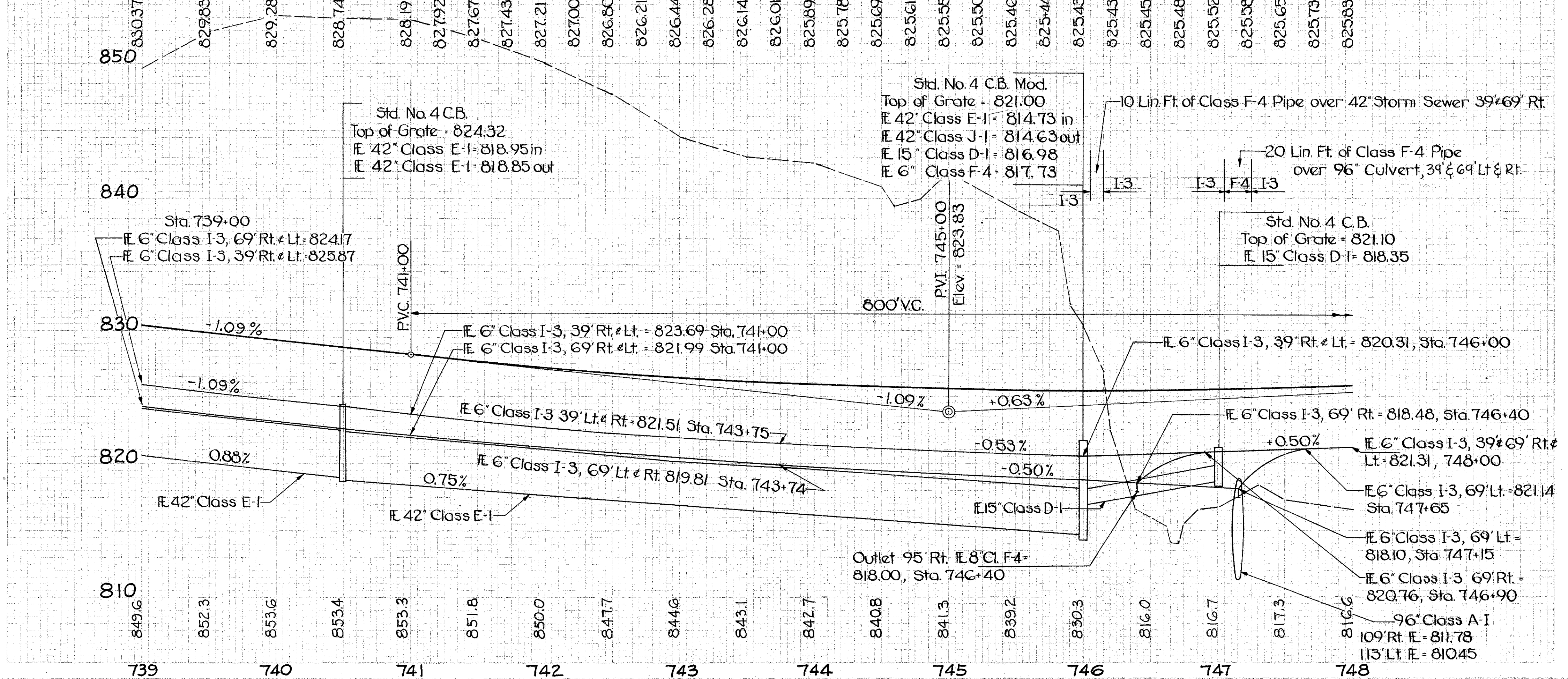
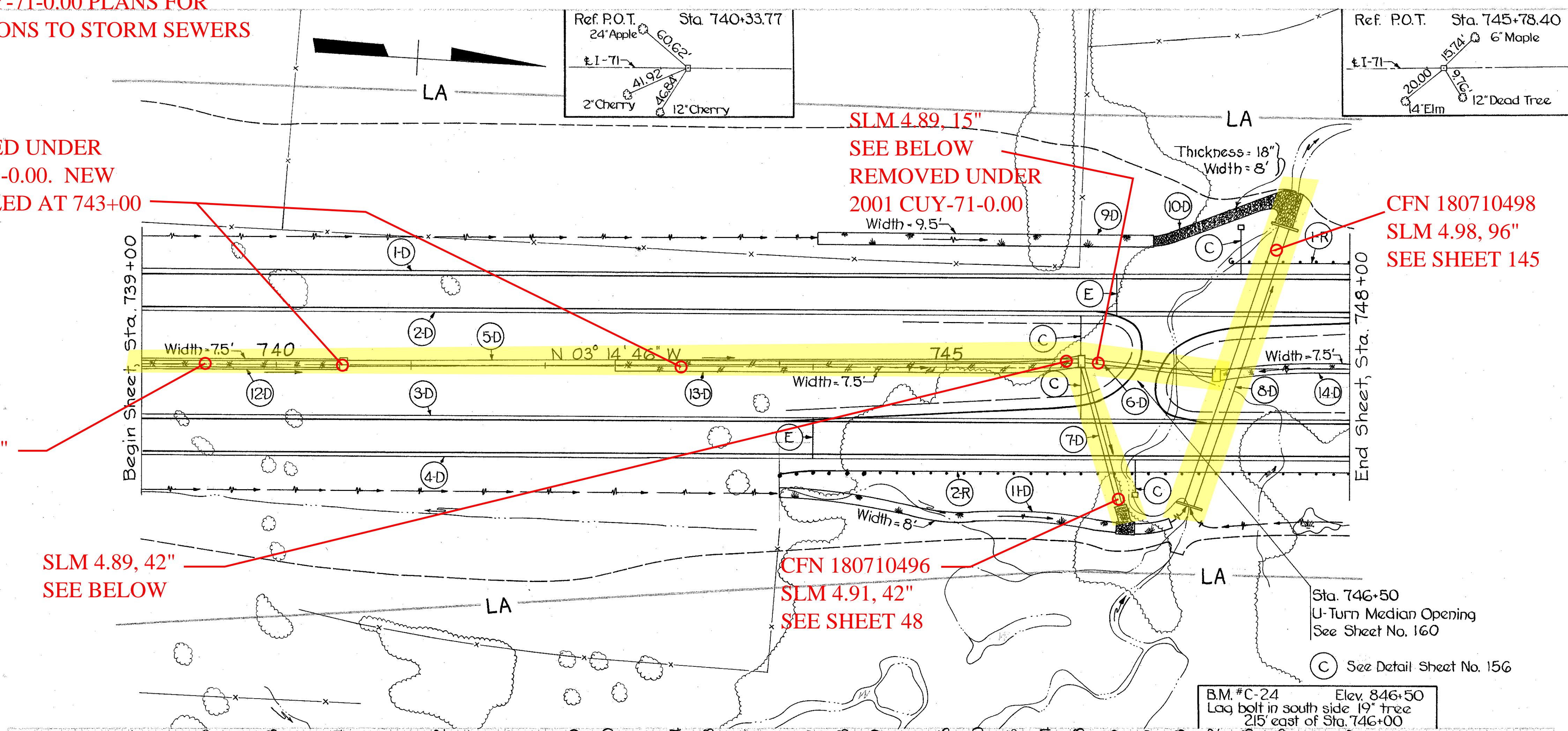
SLM 4.80, 42" SEE BELOW

SLM 4.89, 42" SEE BELOW

SLM 4.89, 15" SEE BELOW REMOVED UNDER 2001 CUY-71-0.00

CFN 180710498 SLM 4.98, 96" SEE SHEET 145

CFN 180710496 SLM 4.91, 42" SEE SHEET 48



REF. SHEET NO.	SEE SHEET NO.	ESTIMATED QUANTITIES	TOTALS
1-D	148	100' 112' 222' 700' 120' 20' 208' 1627'	533
2-D	145	6' 8' 265' 254' 133' 89'	531
3-D	606	6' 8' 265' 254' 133' 89'	531
4-D			89
5-D			89
6-D			89
7-D			89
8-D			89
9-D			89
10-D			89
11-D			89
12-D			89
13-D			89
14-D			89
1-R			89
2-R			89
<b>TOTALS</b>		<b>100' 112' 222' 700' 120' 20' 208' 1627'</b>	<b>533</b>