

TYPICAL LEGEND

- ☐ ELECTRIC BOX
- ⚡ UTILITY POLE
- ⚓ HYDRANT
- ⊠ WATER METER
- ⊕ CENTER LINE
- ⤴ GUYWIRE
- ⊙ MANHOLE
- ⊙ ELECTRIC MANHOLE
- ⊙ TELEPHONE MANHOLE
- ⊙ INLET
- ⊙ GAS VALVE
- ⊙ WATER VALVE
- ☑ PROP. CATCH BASIN NO. 1
- ☑ PROP. CATCH BASIN NO. 2
- ☑ PROP. CATCH BASIN NO. 3
- ⊙ PROP. MANHOLE
- ⊙ MANHOLE ADJUSTED/RECONSTRUCTED TO GRADE
- ⊙ WATER VALVE ADJUSTED TO GRADE
- ⊙ PROP. MON. BOX CASTING
- ⊙ GUTTER INLET
- ⊙ SIGN
- ☁ TREE
- ☁ SHRUB
- ⊙ STUMP
- ⊙ PAVEMENT CORE AND SOIL BORINGS

- PROPERTY LINE
- RW — RIGHT OF WAY LINE
- STM — EX. STORM
- SAN — EX. SANITARY
- — — — — EX. COMBINED SEWER
- W — EX. WATER LINE
- G — EX. GAS LINE
- T — EX. TELEPHONE CONDUIT
- E — EX. ELEC. CONDUIT
- X — EX. FENCE

INDEX OF SHEETS:

- 1 TITLE SHEET
- 2 CENTERLINE SURVEY PLAT
- 3 REFERENCE 3 POINT TIES
- 4-5 TYPICAL SECTIONS
- 6-8 PAVEMENT DETAILS
- 9-14 GENERAL NOTES
- 15-23 MAINTENANCE OF TRAFFIC
- 24-26 GENERAL SUMMARY
- 27-33 SUBSUMMARIES
- 34-38 PLAN - PLAN WARNER RD.
- 39 DRIVE DETAILS
- 40 SEWER PROFILES
- 41-42 DRAINAGE DETAILS
- 43-46 PAVEMENT ELEVATION TABLE
- 47-54 WATER WORK
- 55-67 TRAFFIC CONTROL

# CITY OF CLEVELAND

## MAYOR'S OFFICE OF CAPITAL PROJECTS

### DIVISION OF ENGINEERING AND CONSTRUCTION

# WARNER ROAD REHABILITATION (GRAND DIVISION AVENUE TO BROADWAY AVENUE)

PROJECT DESCRIPTION

THE WORK WITHIN THE LIMITS OF THIS PROJECT INCLUDES THE REHABILITATION OF 0.80 MILES OF WARNER ROAD FROM GRAND DIVISION AVE. TO BROADWAY AVE. THE ROADWAY IMPROVEMENTS INCLUDE, ASPHALT PAVEMENT RESURFACING, PARTIAL PAVEMENT RECONSTRUCTION, NEW CURB, SIDEWALK, AND DRIVE APRONS, CATCH BASIN AND SEWER REPLACEMENT, ADA COMPLIANT CURB RAMP, 610 FEET WATER MAIN REPLACEMENT, NEW TRAFFIC CONTROL SIGNS AND PAVEMENT MARKINGS, AND THE REMOVAL OF TWO TRAFFIC SIGNALS.

2013 SPECIFICATIONS

THE STANDARD SPECIFICATIONS OF THE STATE OF OHIO, DEPARTMENT OF TRANSPORTATION AND THE CITY OF CLEVELAND, INCLUDING CHANGES AND SUPPLEMENTAL SPECIFICATIONS LISTED IN THE PROPOSAL SHALL GOVERN THIS IMPROVEMENT.

FRANK G. JACKSON  
MAYOR

KEVIN J. KELLEY  
President of Council

ZACHARY REED  
Councilmember of Ward 2

MATTHEW L. SPRONZ, PE  
Director of Capital Projects

ROBERT L. DAVIS  
Director of Public Utilities

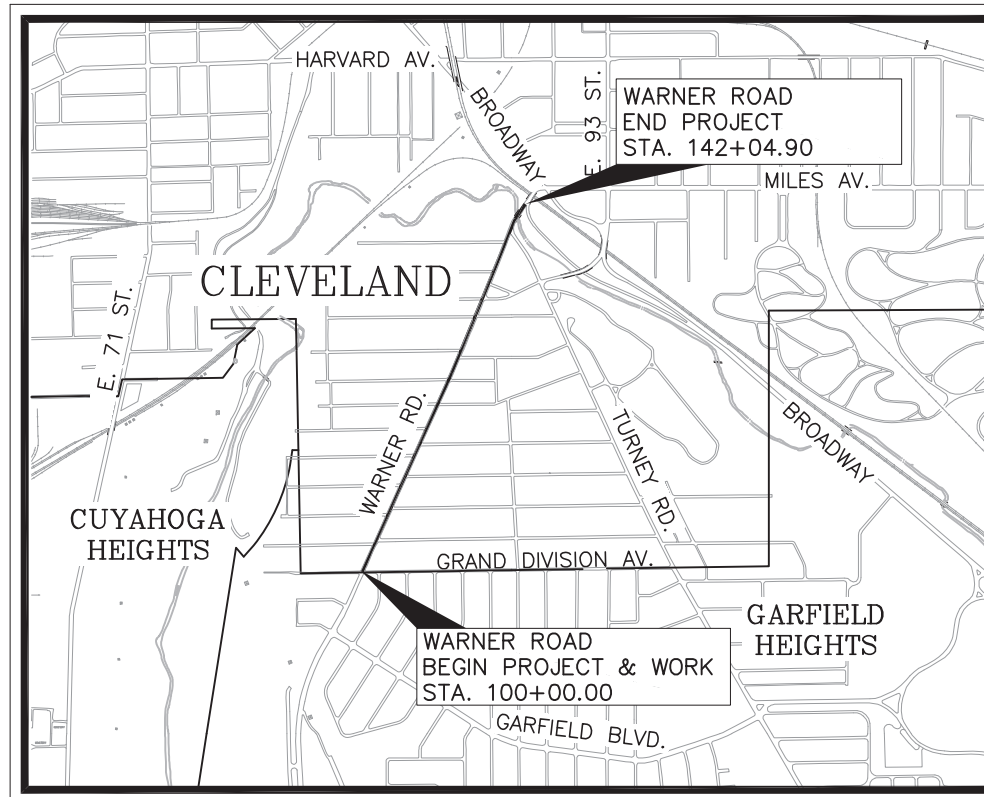
DESIGN DESIGNATIONS

WARNER ROAD  
DESIGN SPEED = 25 MPH  
POSTED SPEED = 25 MPH

WARNER TRAFFIC

CURRENT ADT (2016) = 5,700  
20 YEAR TRAFFIC (2036) = 5,700  
DESIGN HOURLY VOLUME (2036) = 570  
DIRECTIONAL DISTRIBUTION = 42% N/B  
58% S/B

BUSES/TRUCKS (T) = 5%  
URBAN COLLECTOR



LATITUDE: 41° 26' 17"      LOCATION MAP      LONGITUDE: 81° 37' 42"

SCALE IN FEET

**UNDERGROUND UTILITIES**

CONTACT BOTH SERVICES  
CALL TWO WORKING DAYS  
**BEFORE YOU DIG**

CALL  
**1-800-362-2764**  
(TOLL FREE)

OHIO UTILITIES PROTECTION SERVICE  
NON-MEMBERS  
MUST BE CALLED DIRECTLY

OIL & GAS PRODUCERS UNDERGROUND  
PROTECTION SERVICE CALL: **1-800-925-0988**

ENGINEERS SEAL:  
FOR SHEETS:  
1, 4-46, 55-67

SIGNED: *Chris Preto*  
DATE: 6-22-15

ENGINEERS SEAL:  
FOR SHEETS:  
2-3, 47-54

SIGNED: *Roger Newberry*  
DATE: 6/22/15

CITY OF CLEVELAND DIVISION OF ENGINEERING & CONSTRUCTION DRAWINGS				OHIO DEPARTMENT OF TRANSPORTATION STANDARD CONSTRUCTION DRAWINGS				ODOT SUPPLEMENTAL SPECIFICATIONS	
NUMBER	DATE	NUMBER	DATE	NUMBER	DATE	NUMBER	DATE	NUMBER	DATE
ASPH 1	07/08/08	73M	07/08/08	BP-1.1	07/28/00	TC-42.20	10/18/13	800-2013	04/17/15
CONC 1	07/08/08	A-503	07/08/08	BP-2.1	07/19/13	TC-51.11	01/17/14	821	04/20/12
PR 1	08/03/09	A-605	07/08/08	BP-2.2	07/18/08	TC-52.10	10/18/13	832	01/17/14
CR-1	12/08/09	A-695	07/08/08	BP-3.1	07/18/14	TC-52.20	07/18/14	902	12/31/12
CD 1	12/03/09	MB-1C	10/15/14	BP-5.1	07/19/13	TC-71.10	01/17/14	921	04/20/12
CB-1	07/08/08			DM-1.1	01/18/13	TC-82.10	10/18/13		
146 ME	07/08/08			DM-1.2	01/18/13	MT-95.31	07/18/14		
164 ME	07/08/08			DM-4.4	07/20/12	MT-95.32	07/18/14		
244 ME	04/14/08			TC-17.10	01/17/14	MT-97.10	07/18/14		
				TC-22.20	10/18/13	MT-97.11	07/18/14		
				TC-41.20	10/18/13	MT-99.20	07/19/13		
				TC-41.30	10/18/13	MT-101.60	07/19/13		
				TC-41.40	10/18/13	MT-101.90	07/18/14		
				TC-41.41	10/18/13	MT-105.10	07/19/13		
				TC-41.50	10/18/13	MT-110.10	07/19/13		

P:\CLEVELAND, CITY OF PROJECTS\341230 - WARNER ROAD\0700 CAD\ROADWAY\SHEETS\341230W\_G001\_SIGNED.DWG 7/7/2015 2:36 PM ADA72439

PLAN PREPARED BY:  
**Hatch Mott MacDonald**  
18013 CLEVELAND PARKWAY DRIVE, SUITE 200, CLEVELAND, OHIO 44135  
PHONE: (216) 535-3640  
FAX: (216) 285-2818

Approved: *[Signature]*  
Date: *6/22/15* RICHARD J. SWITALSKI, P.E., ADMINISTRATION BUREAU MANAGER  
DIVISION OF ENGINEERING AND CONSTRUCTION

Approved: *[Signature]*  
Date: *6/22/15* ALEX MARGENCIUS, P.E. INTERIM COMMISSIONER  
DIVISION OF WATER

Approved: *[Signature]*  
Date: *6/22/15* ROBERT MAVEC, Commissioner  
DIVISION OF TRAFFIC ENGINEERING

Approved: *[Signature]* 06/26/15  
Date: *6/26/15* RACHID ZOGHAIB, P.E., Commissioner  
DIVISION OF WATER POLLUTION CONTROL

Approved: *[Signature]*  
Date: *6-24-15* JAMES FERGUSON, Chief  
BUREAU OF STREET LIGHTING

Approved: *[Signature]*  
Date: *6-24-15* GREG ESBER, P.S., Chief Surveyor  
DIVISION OF ENGINEERING AND CONSTRUCTION

Approved: *[Signature]*  
Date: *6-24-15* KHALIL EWAIS, P.E., Chief Construction  
DIVISION OF ENGINEERING AND CONSTRUCTION

Approved: *[Signature]*  
Date: *6/24/15* THOMAS BOYER, P.E., Chief Engineer  
DIVISION OF ENGINEERING AND CONSTRUCTION

Approved: *[Signature]*  
Date: *6/24/15* MARTIN REESE, P.E., MPA, Project Manager  
DIVISION OF ENGINEERING AND CONSTRUCTION

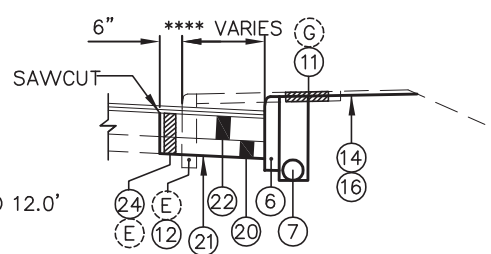
FEDERAL PROJECT NO.  
NON-FEDERAL

PID NO.  
N/A

CITY PROJECT NO.  
M-1150

RAILROAD INVOLVEMENT  
NONE

WARNER ROAD  
PROJECT NO. M-1150



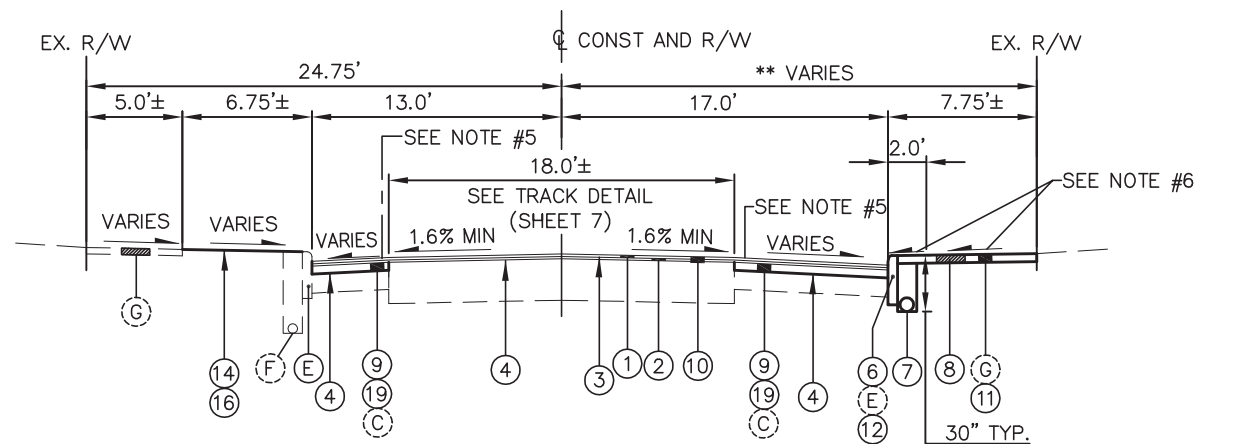
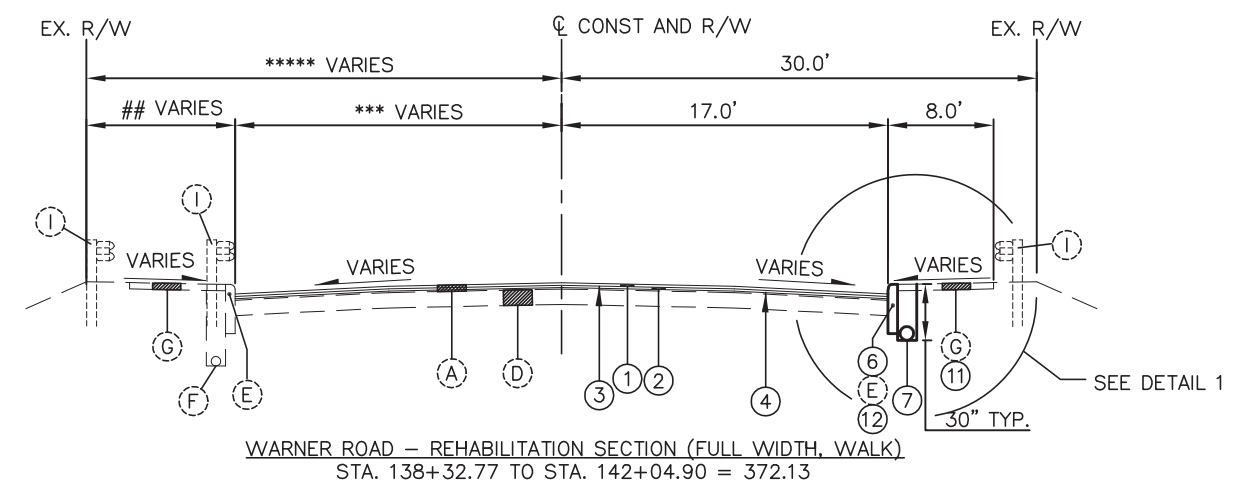
\*\*\*\* EAST SIDE PAVEMENT WIDTHS  
STA. 141+74.21 TO STA. 142+04.90 - VARIES 17.0' TO 12.0'

- PROPOSED LEGEND
- ① ITEM 441 - 1.25" ASPHALT CONCRETE SURFACE COURSE, TYPE 1, (448), PG64-22M, AS PER D-29, AS PER PLAN
  - ② ITEM 441 - 1.75" ASPHALT CONCRETE INTERMEDIATE COURSE, TYPE 2, (448), PG64-22M, AS PER D-29
  - ③ ITEM 407 - TACK COAT FOR INTERMEDIATE COURSE AT 0.05 GAL/SY
  - ④ ITEM 407 - TACK COAT AT 0.1 GAL/SY
  - ⑤ NOT USED
  - ⑥ ITEM 609 - CURB, TYPE 6, AS PER D-23, D-24
  - ⑦ ITEM 605 - 6" SHALLOW PIPE UNDERDRAINS WITH FABRIC WRAP
  - ⑧ ITEM 608 - 4" CONCRETE WALK, AS PER D-23, D-24, AS PER PLAN
  - ⑨ ITEM 301 - 4" MIN ASPHALT CONCRETE BASE, PG64-22, AS PER D-29, AS PER PLAN
  - ⑩ ITEM 254 - PAVEMENT PLANING, ASPHALT CONCRETE, AS PER PLAN (PLANE TO TOP OF BRICK/PAVER, TOP OF TRACK RAIL, OR TO 3", EX. ASPHALT THICKNESS RANGES FROM 1.6" TO 3.6")
  - ⑪ ITEM 202 - WALK REMOVED, AS PER PLAN
  - ⑫ ITEM 202 - CURB REMOVED, AS PER PLAN
  - ⑬ ITEM 202 - TRACK REMOVED, AS PER D-17
  - ⑭ ITEM 659 - SEEDING AND MULCHING, CLASS 1, AS PER D-66, AS PER PLAN
  - ⑮ ITEM 203 - EXCAVATION
  - ⑯ ITEM 209 - LINEAR GRADING, AS PER D-20, AS PER PLAN
  - ⑰ ITEM 204 - PROOF ROLLING
  - ⑱ ITEM 441 - 0" MIN ASPHALT CONCRETE INTERMEDIATE COURSE, TYPE 2, (448), PG64-22M, AS PER D-29, AS PER PLAN
  - ⑲ ITEM 202 - BRICK BASE REMOVED, AS PER PLAN
  - ⑳ ITEM 304 - 6" MIN. AGGREGATE BASE
  - ㉑ ITEM 204 - SUBGRADE COMPACTION
  - ㉒ ITEM 305 - 9" CONCRETE BASE, AS PER D-23, D-24
  - ㉓ NOT USED
  - ㉔ ITEM 202 - PAVEMENT REMOVED, AS PER D-15, AS PER PLAN
  - (L) STANDARD LONGITUDINAL JOINT PER BP-2.1
  - (S) 4" GUTTER SEAL, AS PER D-29

\*\*\* WEST SIDE PAVEMENT WIDTHS  
STA. 138+32.77 TO STA. 139+67.32 - 13.0'  
STA. 139+67.32 TO STA. 140+07.00 - VARIES 13.0' TO 18.0'  
STA. 140+07.00 TO STA. 142+04.90 - VARIES 18.0' TO 18.0'

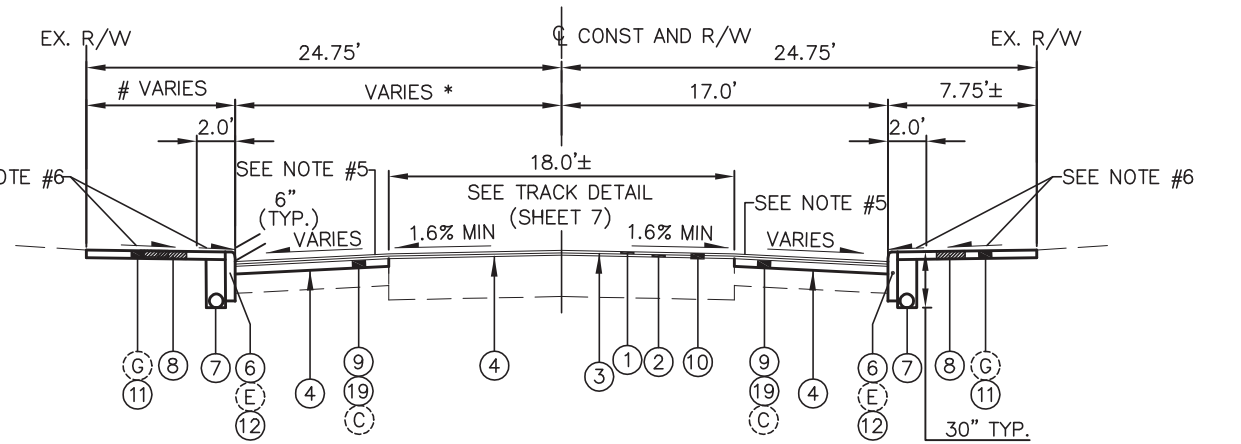
\*\*\*\*\* WEST SIDE RIGHT-OF-WAY WIDTHS  
STA. 138+32.77 TO STA. 139+99.75 - 24.75' TO 30.0'  
STA. 139+99.75 TO STA. 142+04.90 - 30.0'

## WEST SIDE SIDEWALK WIDTH  
STA. 138+32.77 TO STA. 142+04.90 - 24.75' TO 11.94'



\* WEST SIDE PAVEMENT WIDTHS  
STA. 100+00.00 TO STA. 100+94.27 - 21.0'  
STA. 100+94.27 TO STA. 101+07.27 - VARIES 21.0' TO 17.0'  
STA. 101+07.27 TO STA. 137+13.38 - 17.0'  
STA. 137+13.38 TO STA. 137+70.55 - VARIES 17.0' TO 13.0'

# WEST SIDE SIDEWALK WIDTHS  
STA. 100+00.00 TO STA. 100+94.27 - 3.75'  
STA. 100+94.27 TO STA. 101+07.27 - VARIES 3.75' TO 7.75'  
STA. 101+07.27 TO STA. 137+70.55 - 7.75'



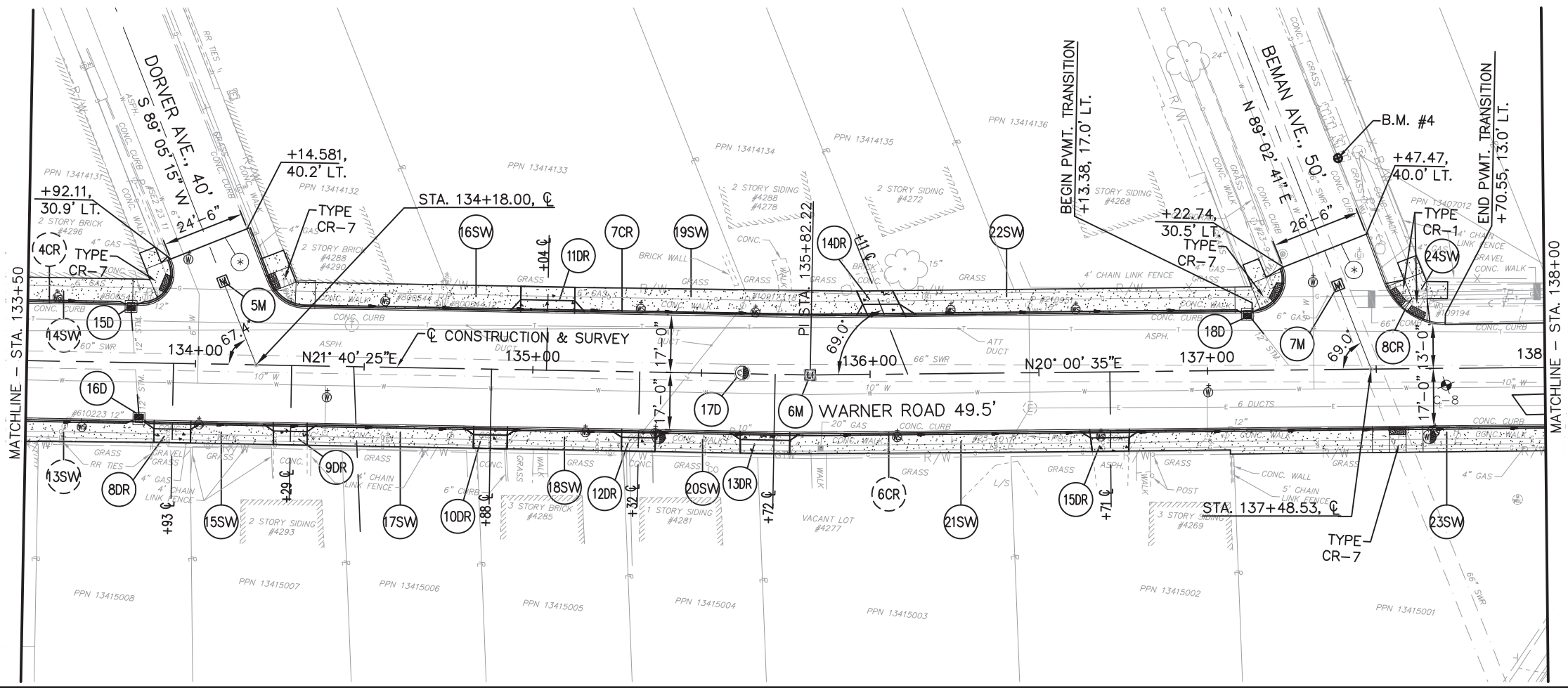
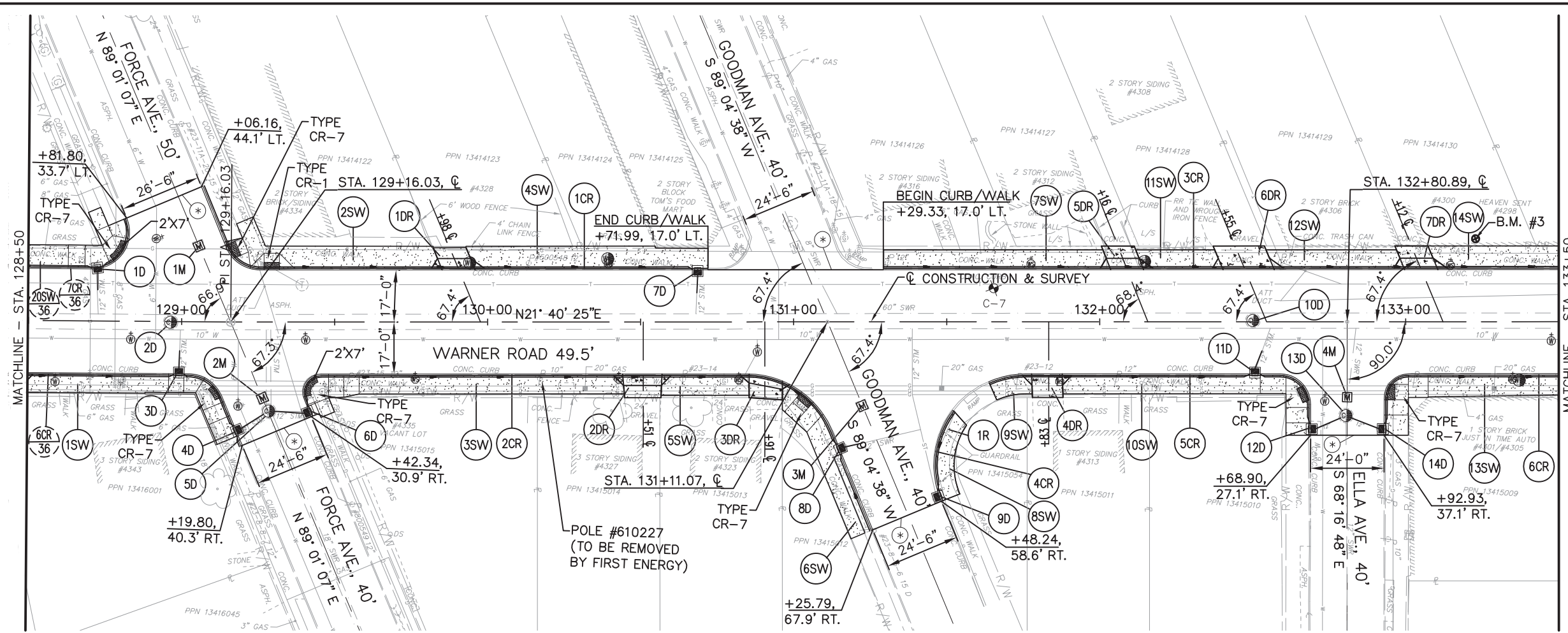
\*\* EAST SIDE RIGHT-OF-WAY WIDTHS  
STA. 138+34.13 TO STA. 139+67.32 - 24.75' TO 30.0'

- NOTES:
1. CONTRACTOR TO BEGIN PAVEMENT PLANING AT THE CENTERLINE.
  2. CONTRACTOR IS TO FOLLOW THE TEMPERATURE REQUIREMENTS IN 401.06.
  3. FOR PAVEMENT ELEVATION TABLE, SEE SHEETS 43-45.
  4. FOR EXISTING LEGEND, SEE SHEET 4.
  5. SEE SHEET 6 FOR LEVELING COURSE DETAIL FOR CURB REVEAL ADJUSTMENT.
  6. THE FIRST TWO (2) FEET OF SIDEWALK ADJACENT TO THE CURB SHALL HAVE A CROSS SLOPE RANGE FROM 0.5% TO 8.0%. THE REMAINING SIDEWALK SHALL HAVE A CROSS SLOPE RANGE FROM 1.0%(MIN.) TO 2.0% (MAX.). THE INTENT IS TO MATCH THE EXISTING BACK OF WALK ELEVATION.

P:\CLEVELAND, CITY OF\PROJECTS\341230 - WARNER ROAD\0700 CAD\ROADWAY\SHEETS\341230W\_LY001.DWG - 07002 - CDED\_SURVEY\CTB - PLOTTED 6/26/2019 9:22 AM BY ADAMS, THOMAS M



P:\CLEVELAND, CITY OF\PROJECTS\341230 - WARNER ROAD\0700 CAD\ROADWAY\SHEETS\341230W\_GPO04.DWG - GPO04 - BRIDGE\_FULL.CTB - PLOTTED 6/22/2015 12:07 PM BY ADAMS, THOMAS M

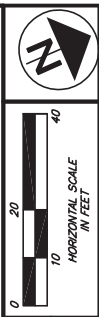


- NOTES:**
1. SAW-CUT SIDEWALK 6" FROM BUILDING FACE FOR PROPOSED SIDEWALK AND REMOVE WALK TO BUILDING FACE PER DETAIL ON SHEET 6.
  2. ALL SIDE STREET WIDTHS SHOWN MATCH EXISTING.
  3. ALL WATER VALVES AND SERVICE BOXES LOCATED IN PAVEMENT, SIDEWALK OR DRIVEWAYS TO BE RESURFACED OR REPLACED ARE TO BE ADJUSTED TO GRADE.
  4. SEE SHEET 39 FOR DRIVE DETAILS.
  5. ALL TRUNCATED DOMES TO BE 2'X5' UNLESS OTHERWISE NOTED.

- LEGEND**
- [Pattern] - NEW SIDEWALK
  - [Pattern] - NEW DRIVEWAY
  - (\*) - BUTT JOINT PER ODOT BP-3.1

CROSS REFERENCES	
SHEET NO.	DESCRIPTION
27-33	SUBSUMARIES
43-45	PAVEMENT ELEVATION TABLES
66	TRAFFIC CONTROL PLANS

BENCHMARK #3 F.F. TOP OF TILE STA. 133+22.85, 27.08' LT. ELEV. 801.86	BENCHMARK #4 CHISELED 'X' STA. 137+39.33, 62.61' LT. ELEV. 799.51
--	--

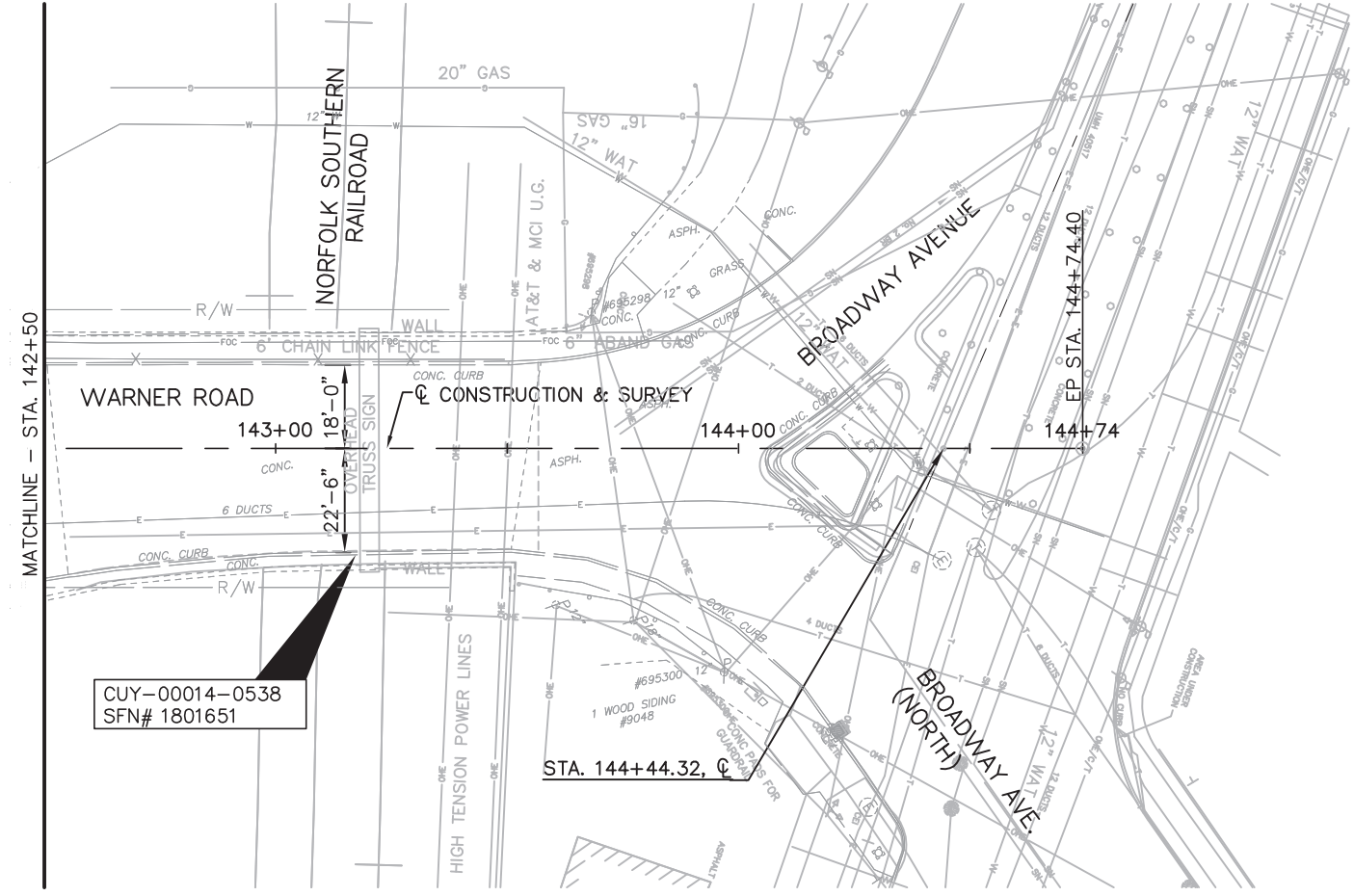
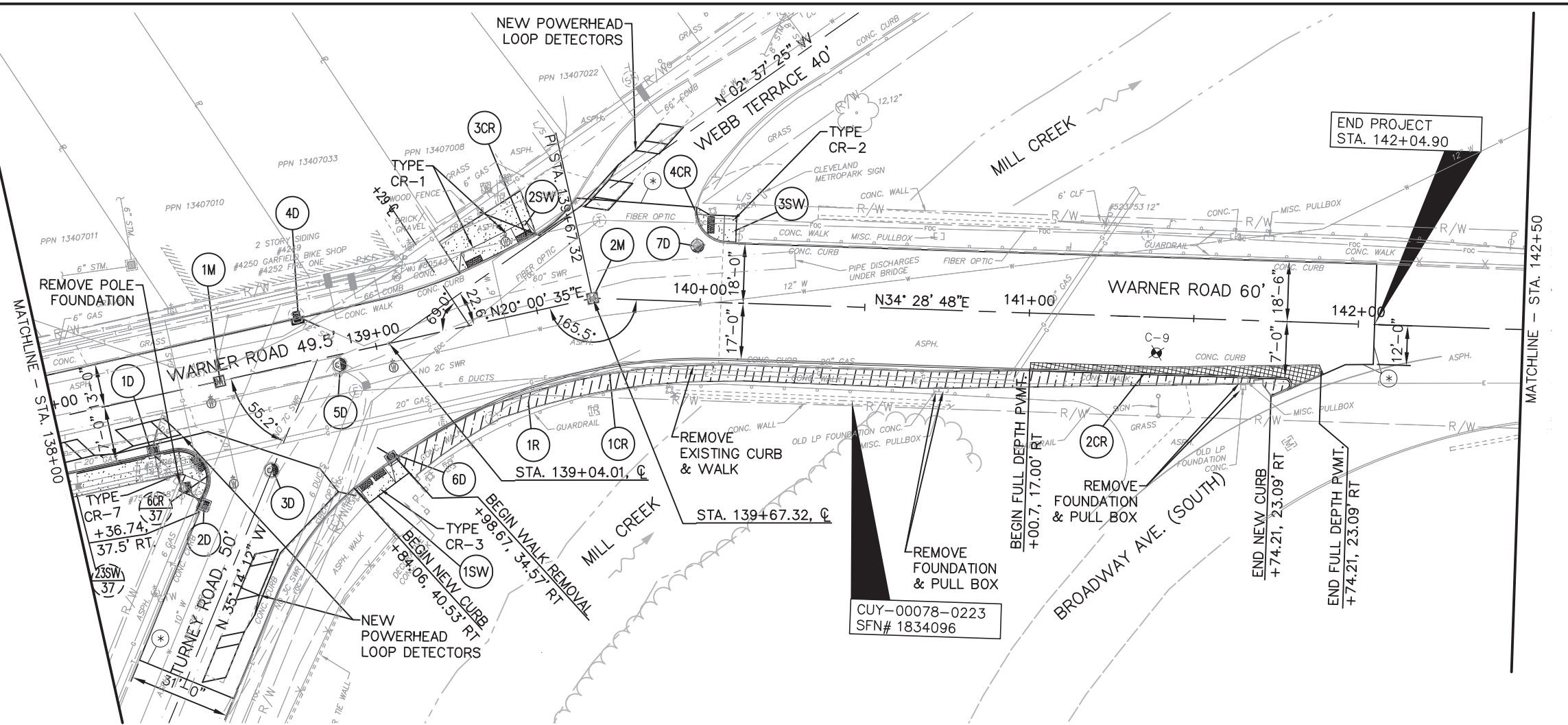


PLAN - WARNER ROAD  
STA. 128+50 TO STA. 138+00

WARNER ROAD  
PROJECT NO. M-1150

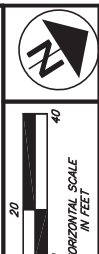


P:\CLEVELAND, CITY OF\PROJECTS\341230 - WARNER ROAD\0700 CAD ROADWAY\341230W\_0700S.DWG - 0700S - BRIDGE\_FULL.CTB - PLOTTED 6/22/2015 12:08 PM BY ADAMS, THOMAS M



CROSS REFERENCES	
SHEET NO.	DESCRIPTION
27-33	SUBSUMARIES
43-45	PAVEMENT ELEVATION TABLES
67	TRAFFIC CONTROL PLANS

BENCHMARK #6  
NW CORNER OF VAULT  
STA. 115+33.41, 67.63' RT.  
ELEV. 813.88



**NOTES:**

1. SAW-CUT SIDEWALK 6" FROM BUILDING FACE FOR PROPOSED SIDEWALK AND REMOVE WALK TO BUILDING FACE PER DETAIL ON SHEET 6.
2. ALL SIDE STREET WIDTHS SHOWN MATCH EXISTING.
3. ALL WATER VALVES AND SERVICE BOXES LOCATED IN PAVEMENT, SIDEWALK OR DRIVEWAYS TO BE RESURFACED OR REPLACED ARE TO BE ADJUSTED TO GRADE.
4. SEE SHEET 39 FOR DRIVE DETAILS.
5. ALL TRUNCATED DOMES TO BE 2'X5' UNLESS OTHERWISE NOTED.

**LEGEND**

- NEW SIDEWALK
- NEW DRIVEWAY
- FULL DEPTH PAVEMENT REPLACEMENT
- WALK REMOVED
- BUTT JOINT PER ODOT BP-3.1

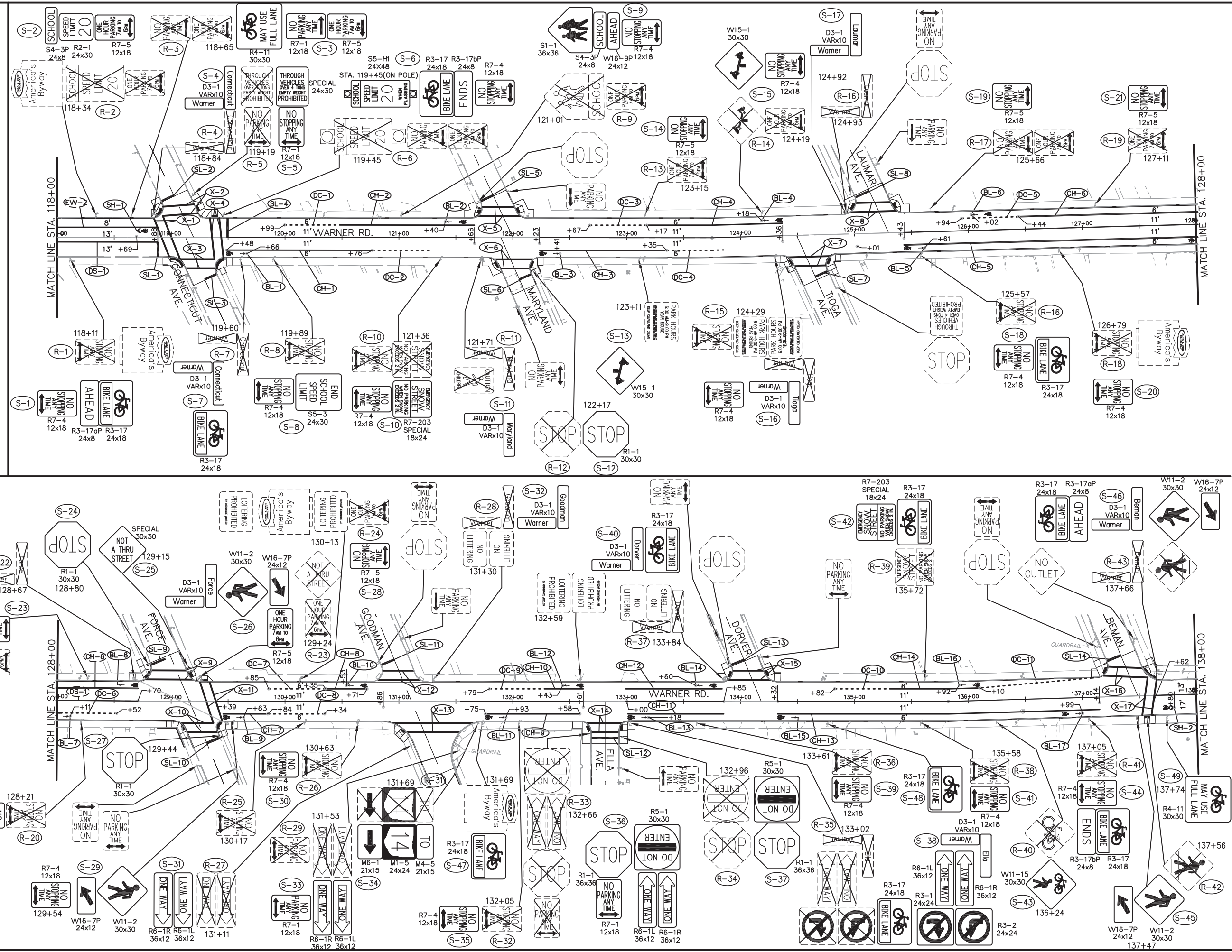
PLAN - WARNER ROAD  
STA. 138+00 TO STA. 144+00

WARNER ROAD  
PROJECT NO. M-1150



P:\CLEVELAND, CITY OF\PROJECTS\341230 - WARNER ROAD\0700 CAD\TRAFFIC CONTROL SHEETS\2341230W\_IP001.DWG - PLOTTED 6/22/2015 8:38 AM BY ADAMS, THOMAS M

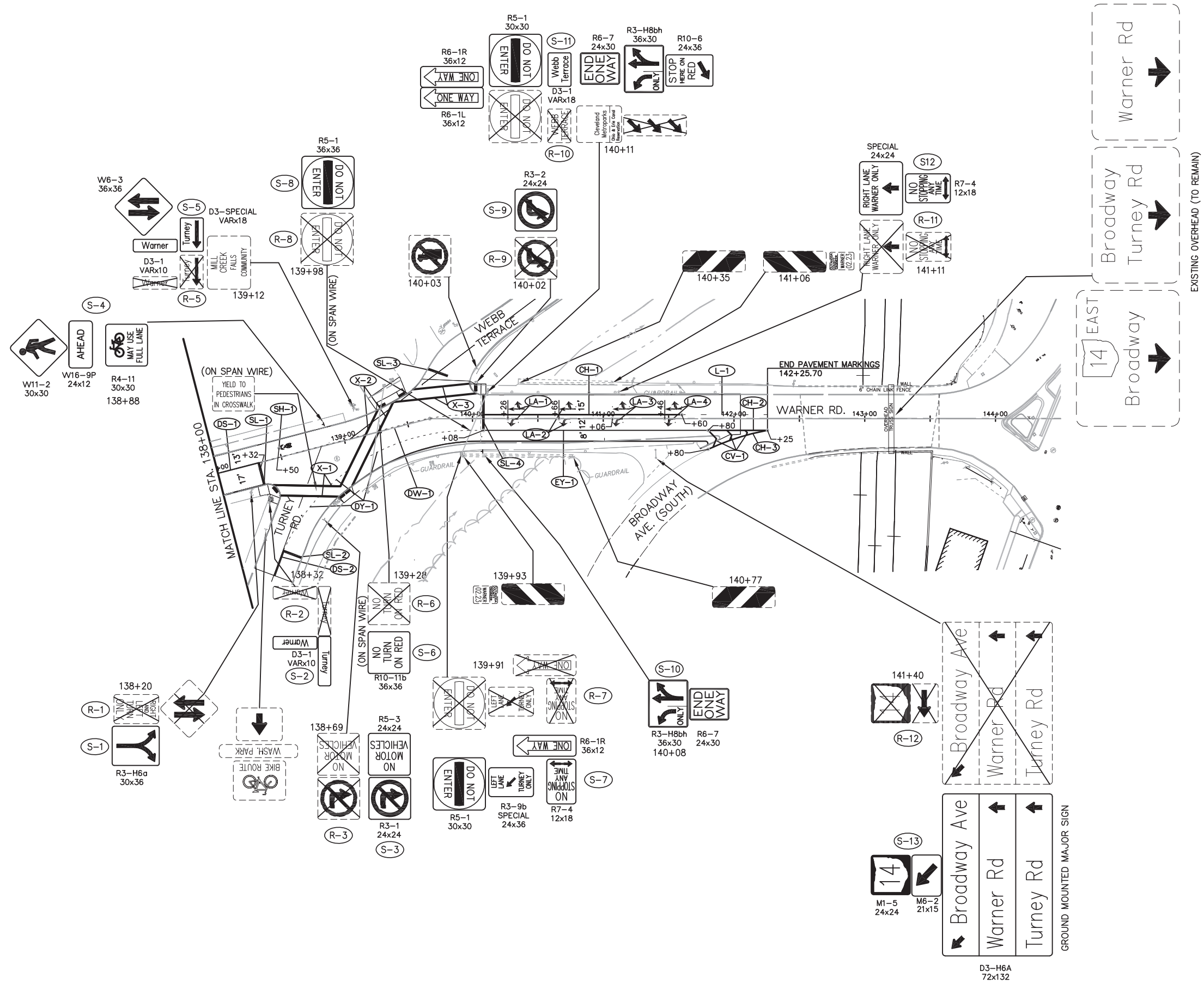
NOTE:  
1. FOR SIGNING AND PAVEMENT MARKING LEGEND SEE SHEET 65.



SIGNING AND PAVEMENT MARKING PLAN  
STA 118+00 TO STA 138+00

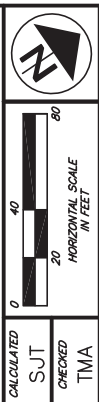
WARNER ROAD  
PROJECT NO. M-1150

66  
67



D3-H6A  
72x132

EXISTING OVERHEAD (TO REMAIN)



SIGNING AND PAVEMENT MARKING PLAN  
PROJECT NO. M-1150  
STA 138+00 TO STA 144+00

WARNER ROAD  
PROJECT NO. M-1150

NOTE:  
1. FOR SIGNING AND PAVEMENT MARKING LEGEND SEE SHEET 65.