

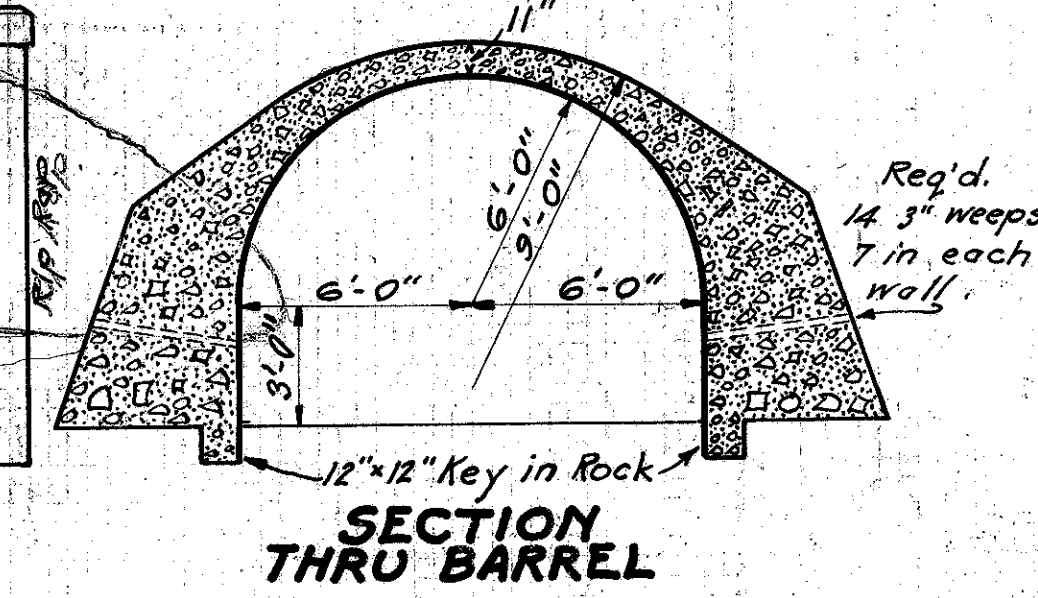
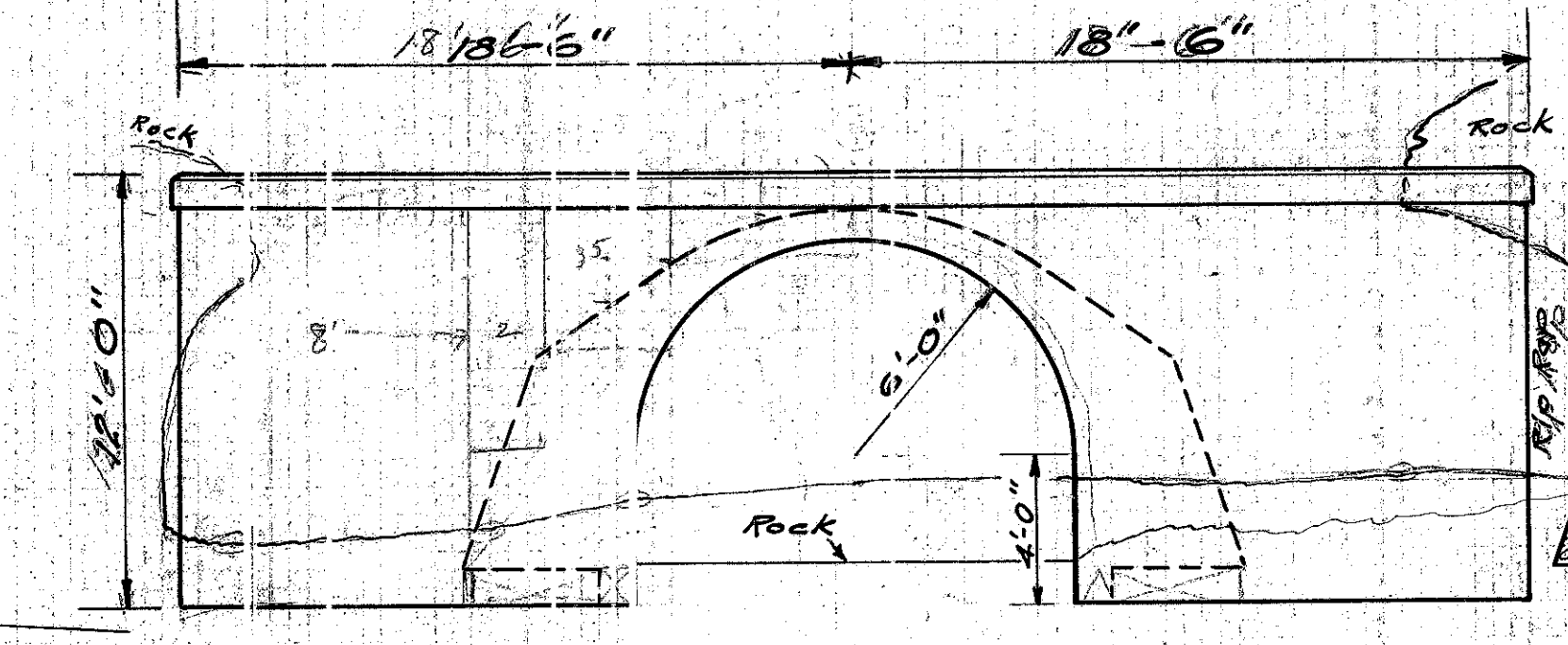
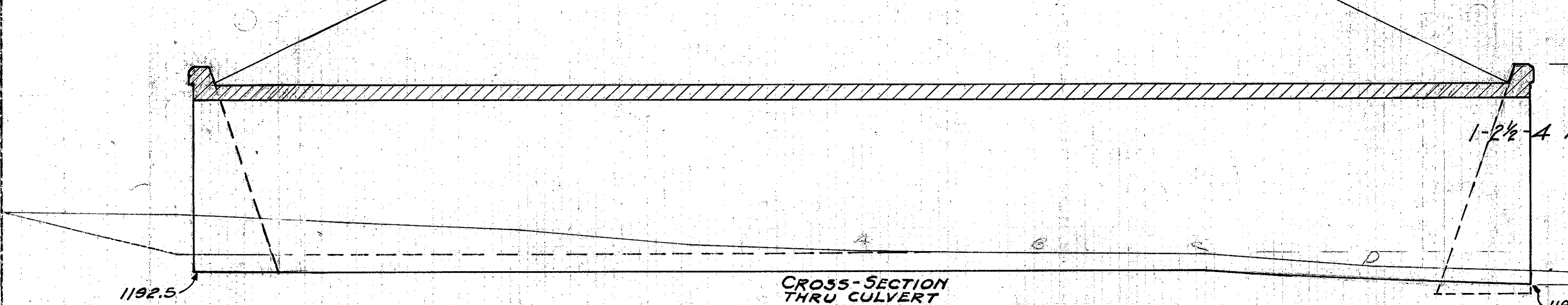
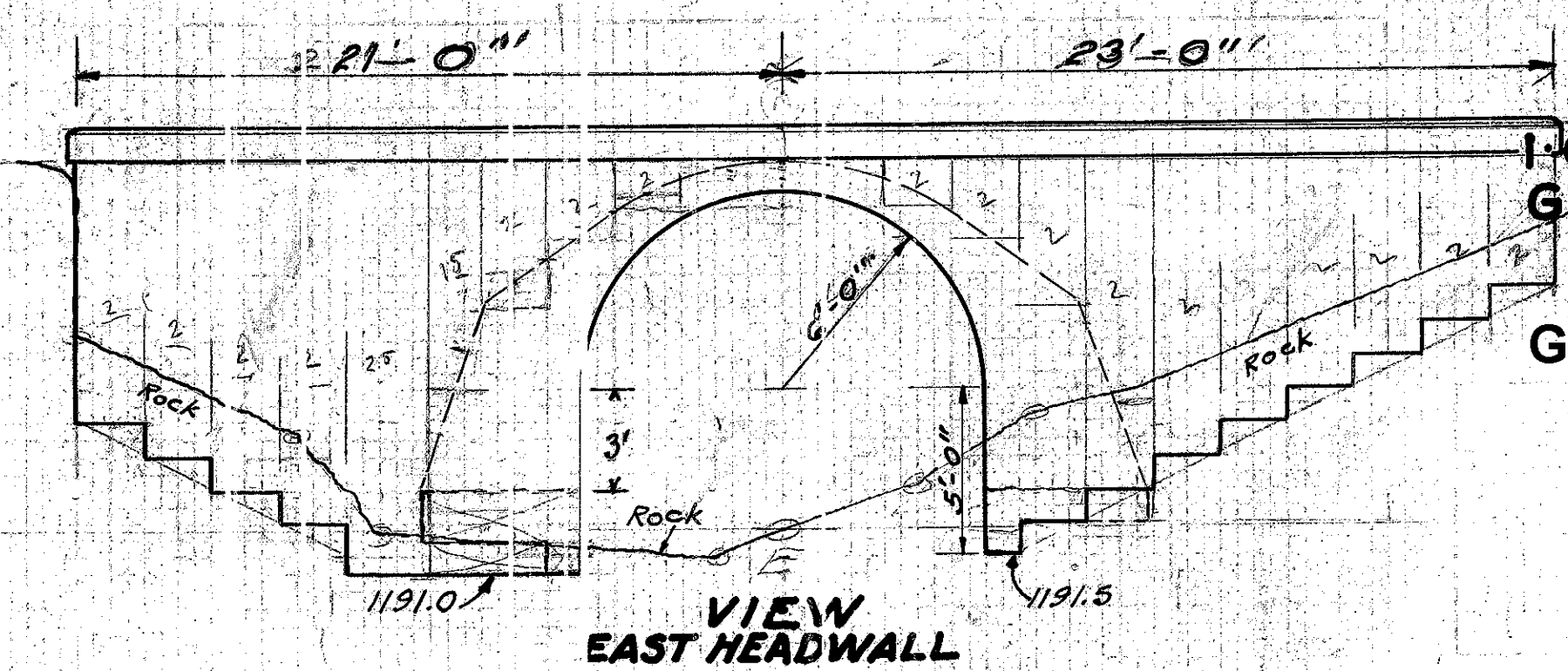
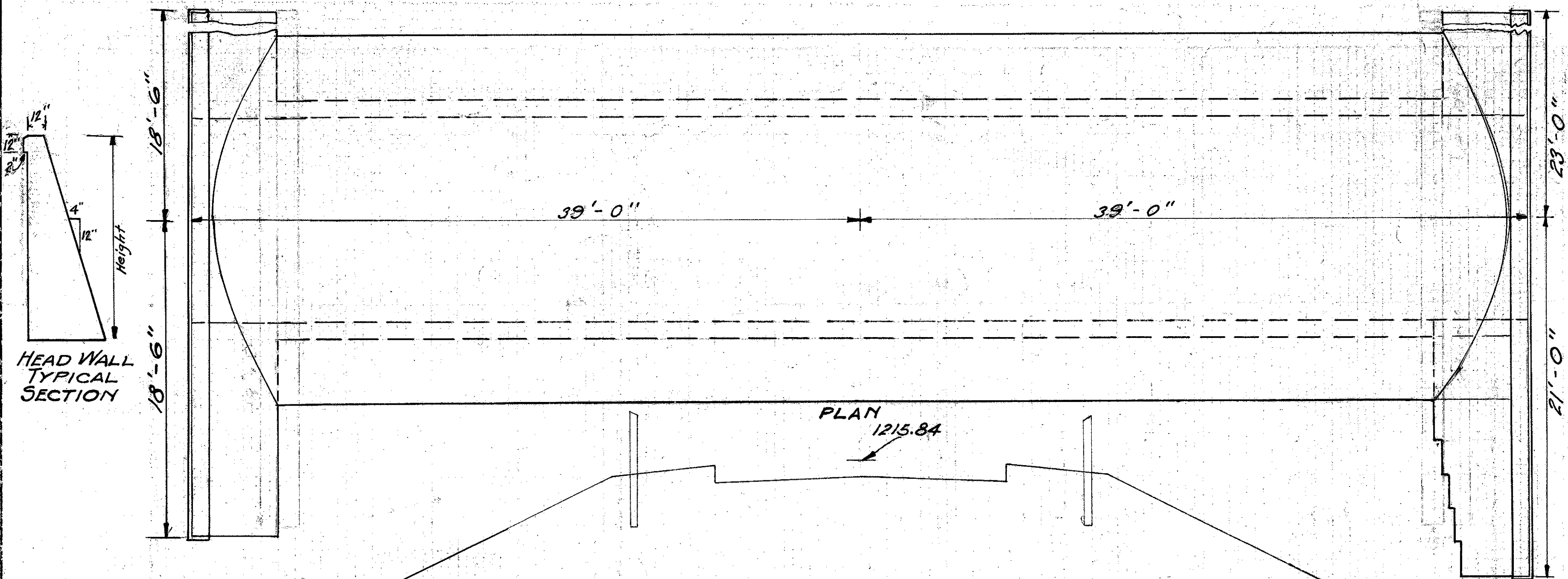
FED. RD. DIST. NO.	STATE	FED. AID PROJECT	FISCAL YEAR
10	OHIO	388-D	1926

I.C.H. 324 SEC. E
GEAUGA COUNTY

16
19

GEA-44-(8.88-10.92)

2



Note: Abutments & Headwalls shall be set in channel cut in the rock not less than 12" x 12".

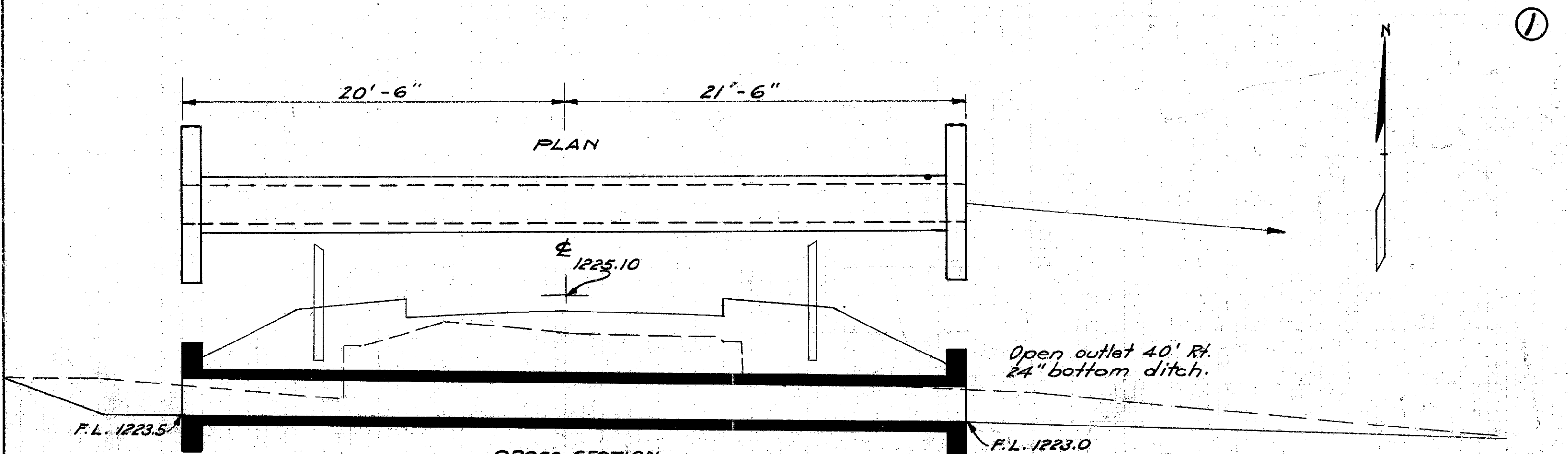
Note: Overhanging ledge of rock shall be cut off and rock used in back fill.

CULVERT DATA
 Type Stan. Arch, Special Head Walls.
 Size 12' Span
 Work Req'd: Build new 12' x 78' Con. Arch.
 Scale 1"=5'

EST. QUANTITIES
 Rock Excav. = 120 Cu Yds.
 Conc. 1-2 1/2 A = 2497 Cu Yds.
 Reinf. Steel = 145 Lbs.
 Rip Rap = 255 Sq Yds.

Sta. Drawing G-249

STA. 11+48

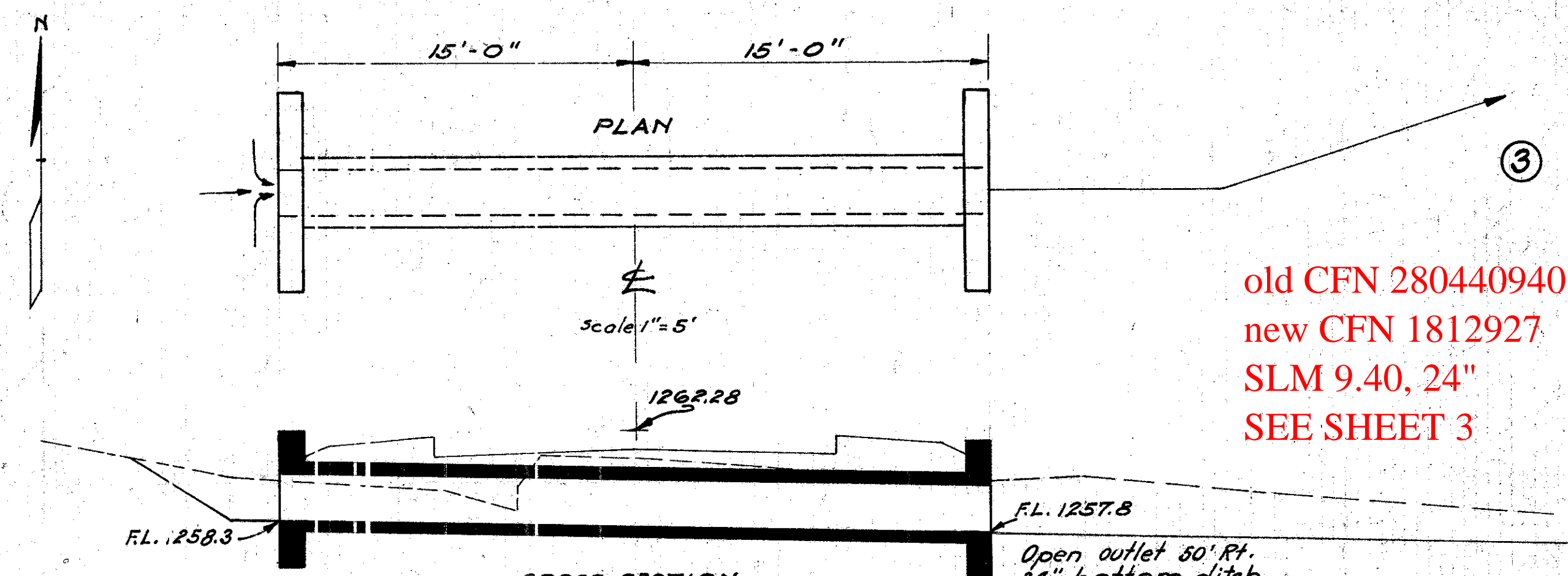


CULVERT DATA
 Type Stan. V.S.P. Culvert Dr. #300.
 Size 24" x 42"
 Work Req'd: Remove 2 1/2' old Stone Box. (Full). Build V.S.P. Culvert.
 Drawn by G.R.H. Jan. 1926
 Checked by Date

EST. QUANTITIES
 Excav. 25 Cu Yds.
 Conc. 1-2-3 1/2 3.5 Cu Yds.
 Conc. 1-3-5 8.2 Cu Yds.
 Reinf. Steel 105 Lbs.
 24" V.S.P. 42 Lin. Ft.

old CFN 28044094
 new CFN 1812938
 SLM 9.04, 24"
 SEE SHEET 3
 1974 GEA-44-8.79 CONNECTS NEW 15" STORM SEWER ON WEST SIDE INTO CULVERT VIA A TEE.

STA. 5+67



CULVERT DATA
 Type Stan. V.S.P. Culvert Dr. #300
 Size 24" x 30"
 Work Req'd: Remove old broken 10" pipe. Build V.S.P. Culvert.
 Drawn by G.R.H. Jan. 1926
 Checked by Date

EST. QUANTITIES
 Excav. 18 Cu Yds.
 Conc. 1-2-3 1/2 3.5 Cu Yds.
 Conc. 1-3-5 5.8 Cu Yds.
 Reinf. Steel 105 Lbs.
 24" V.S.P. 30 Lin. Ft.

old CFN 280440940
 new CFN 1812927
 SLM 9.40, 24"
 SEE SHEET 3

STA. 24+66