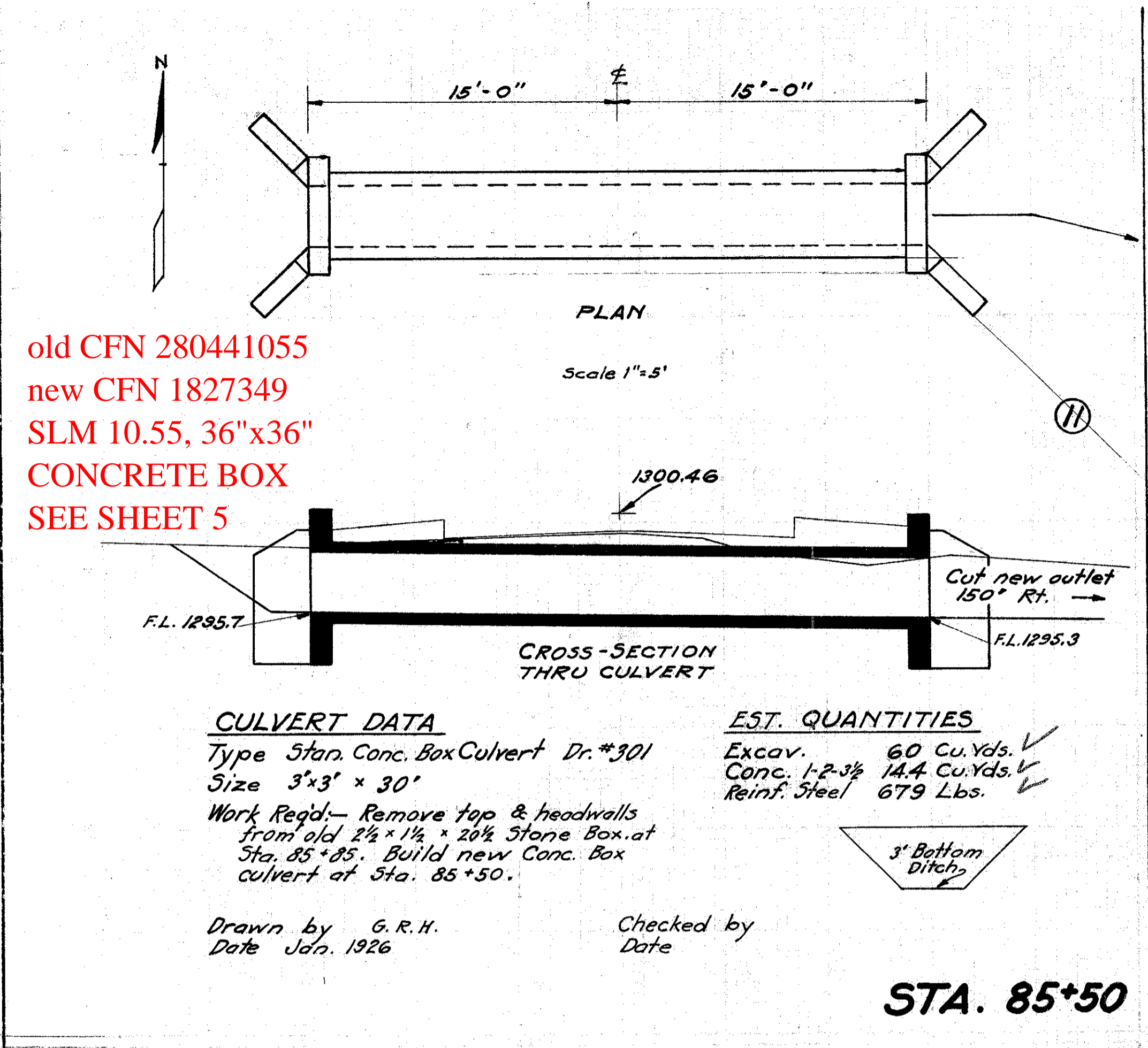


FED. RD. DIST. NO.	STATE	FED. AID PROJECT	FISCAL YEAR
10	OHIO	388-D	1926

I.C.H. 324 SEC. E
 GEAUGA COUNTY
 GEA-44-(8.88-10.92)

18
19



old CFN 280441055
 new CFN 1827349
 SLM 10.55, 36"x36"
 CONCRETE BOX
 SEE SHEET 5

CULVERT DATA

Type Stan. Conc. Box Culvert Dr. #301
 Size 3'x3' x 30'
 Work Req'd:- Remove top & headwalls from old 2 1/2' x 1 1/2' x 20' Stone Box. at Sta. 85+05. Build new Conc. Box culvert at Sta. 85+50.

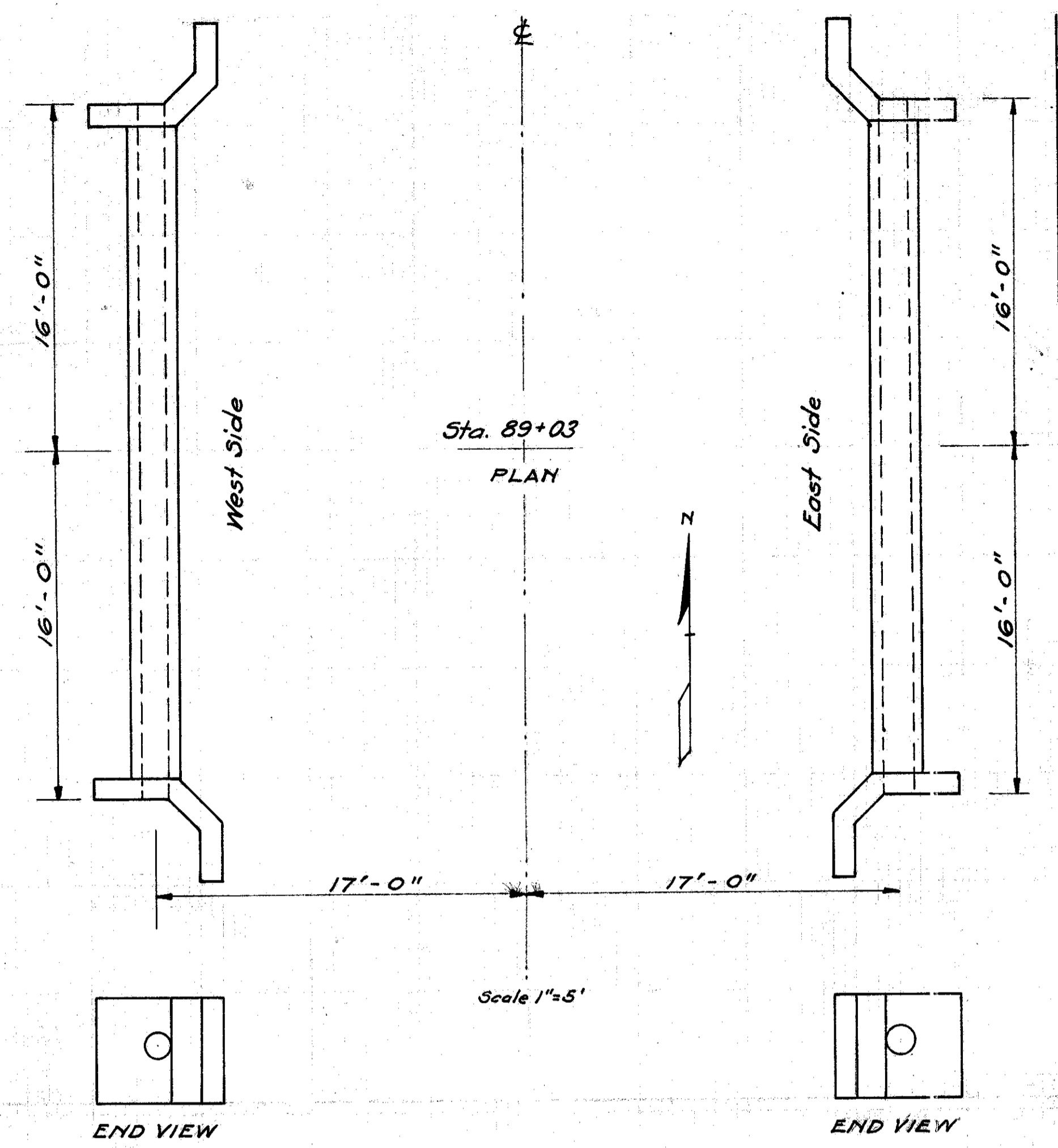
EST. QUANTITIES

Excav. 60 Cu. Yds. ✓
 Conc. 1-2-3/4 14.4 Cu. Yds. ✓
 Reinf. Steel 679 Lbs. ✓

Drawn by G.R.H.
 Date Jan. 1926

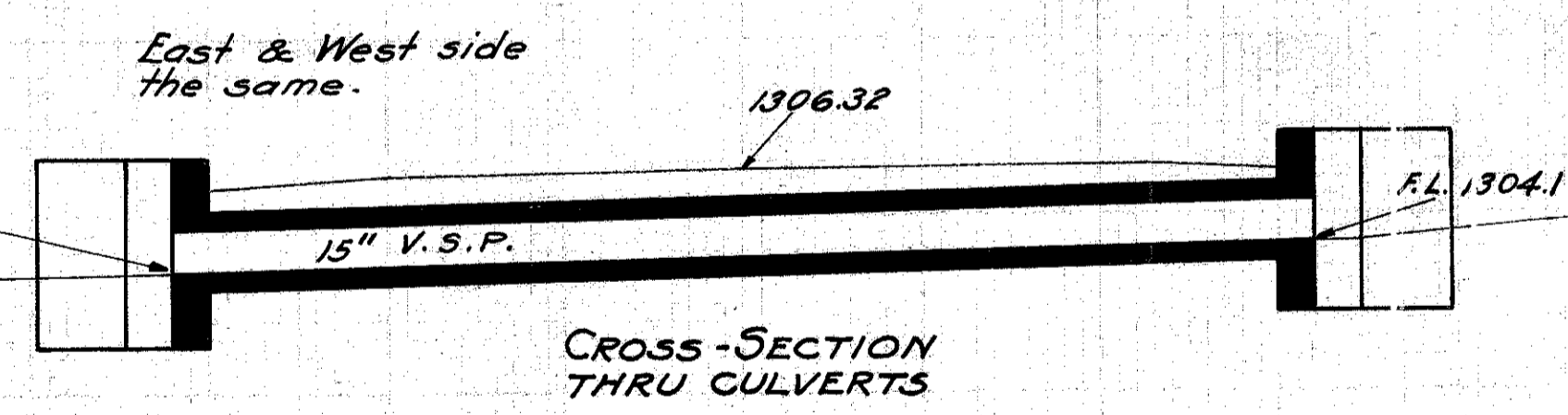
Checked by
 Date

STA. 85+50



old CFN 280441063
 new CFN 1812939
 SLM 10.58, 15"
 SEE SHEET 5
 CB installed at inlet
 SS<36"

old CFN 280441062
 new CFN 1812940
 SLM 10.58, 15"
 SEE SHEET 5



CULVERT DATA

Type Stan. Side Road V.S.P. Culvert Dr. #300
 Size (2) 15" x 32"
 Work Req'd:- Remove 10"x24" pipe on Lt. & remains of 12" pipe on Rt. Build 2 new side road culverts.

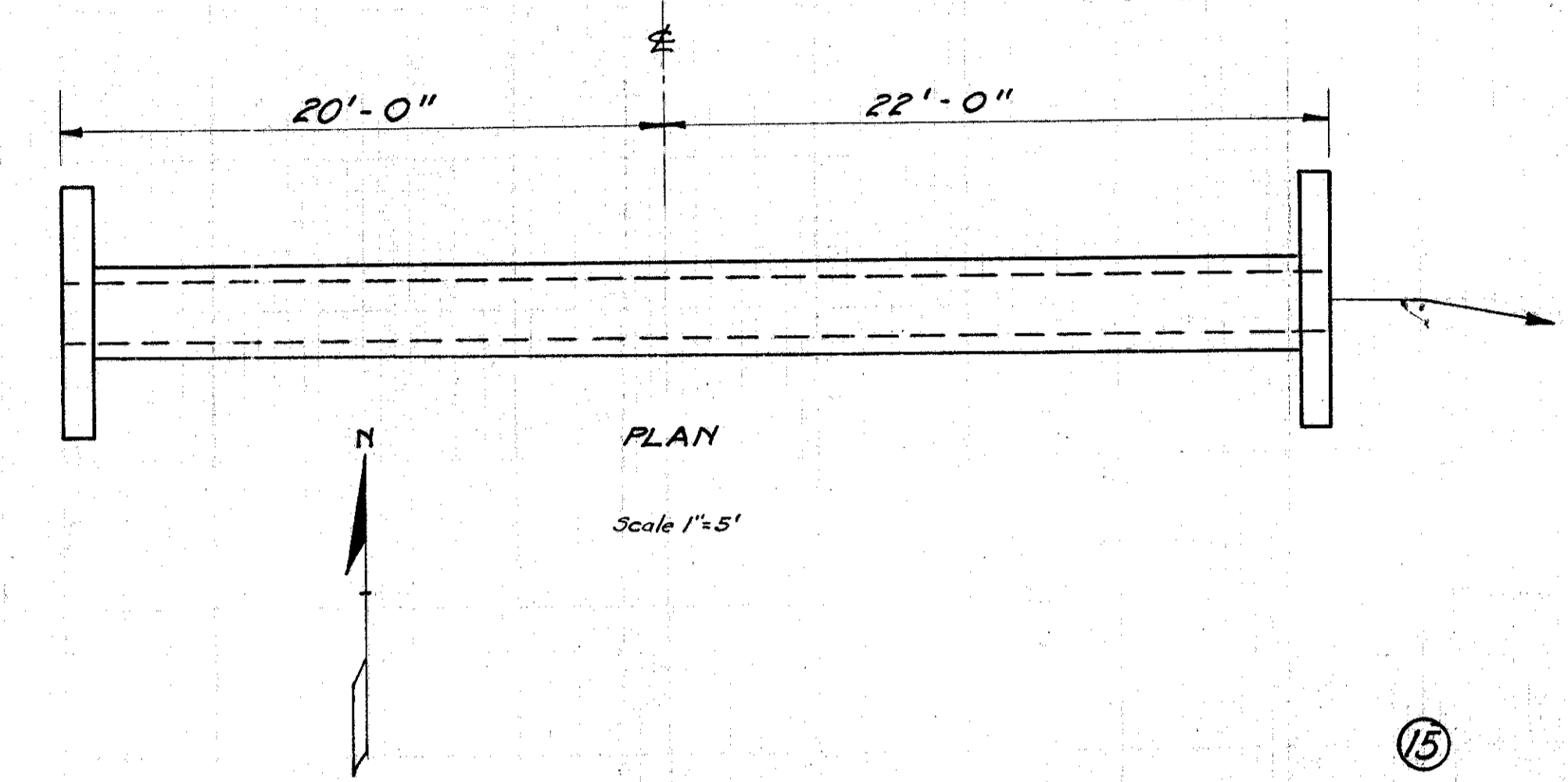
EST. QUANTITIES

Excav. 25 Cu. Yds. ✓
 Conc. 1-2-3/4 5.8 Cu. Yds. ✓
 Conc. 1-3-5 7.8 Cu. Yds. ✓
 Reinf. Steel 130 Lbs. ✓
 15" V.S.P. 64 Lin. Ft. ✓

Drawn by G.R.H.
 Date Jan. 1926

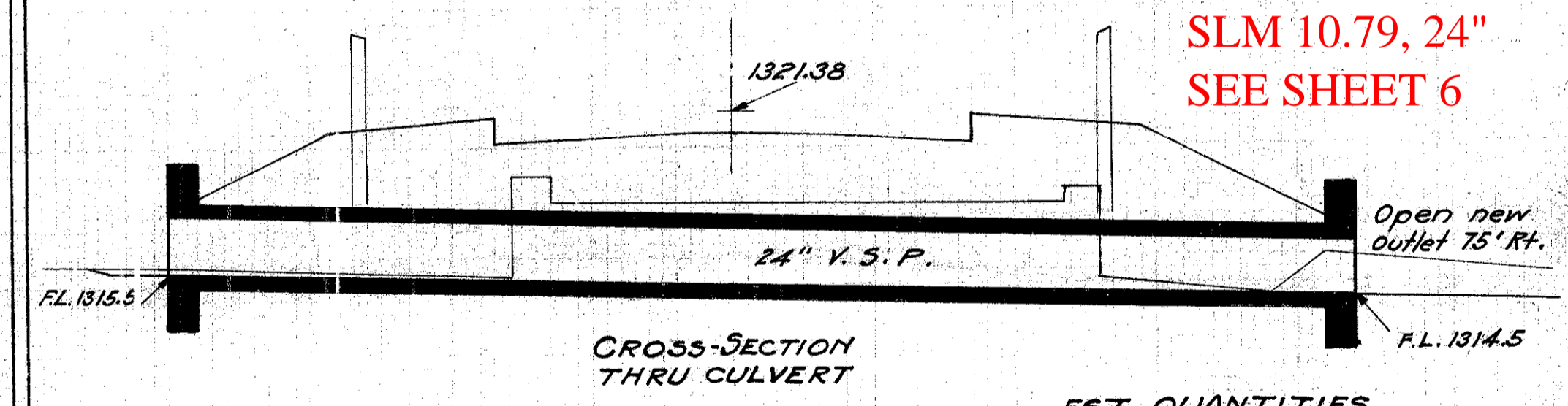
Checked by
 Date

STA. 89+03



A CATCH BASIN WAS INSTALLED AT THE INLET AT SOME POINT. PIPE FROM UPSTREAM POND FLOWS INTO INLET CB.

old CFN 280441079
 new CFN 1812941
 SLM 10.79, 24"
 SEE SHEET 6



CULVERT DATA

Type Stan. V.S.P. Culvert Dr. #300
 Size 24" x 42'
 Work Req'd:- Remove old 2' x 1 1/2' x 21' Stone box Build new V.S.P. culvert.

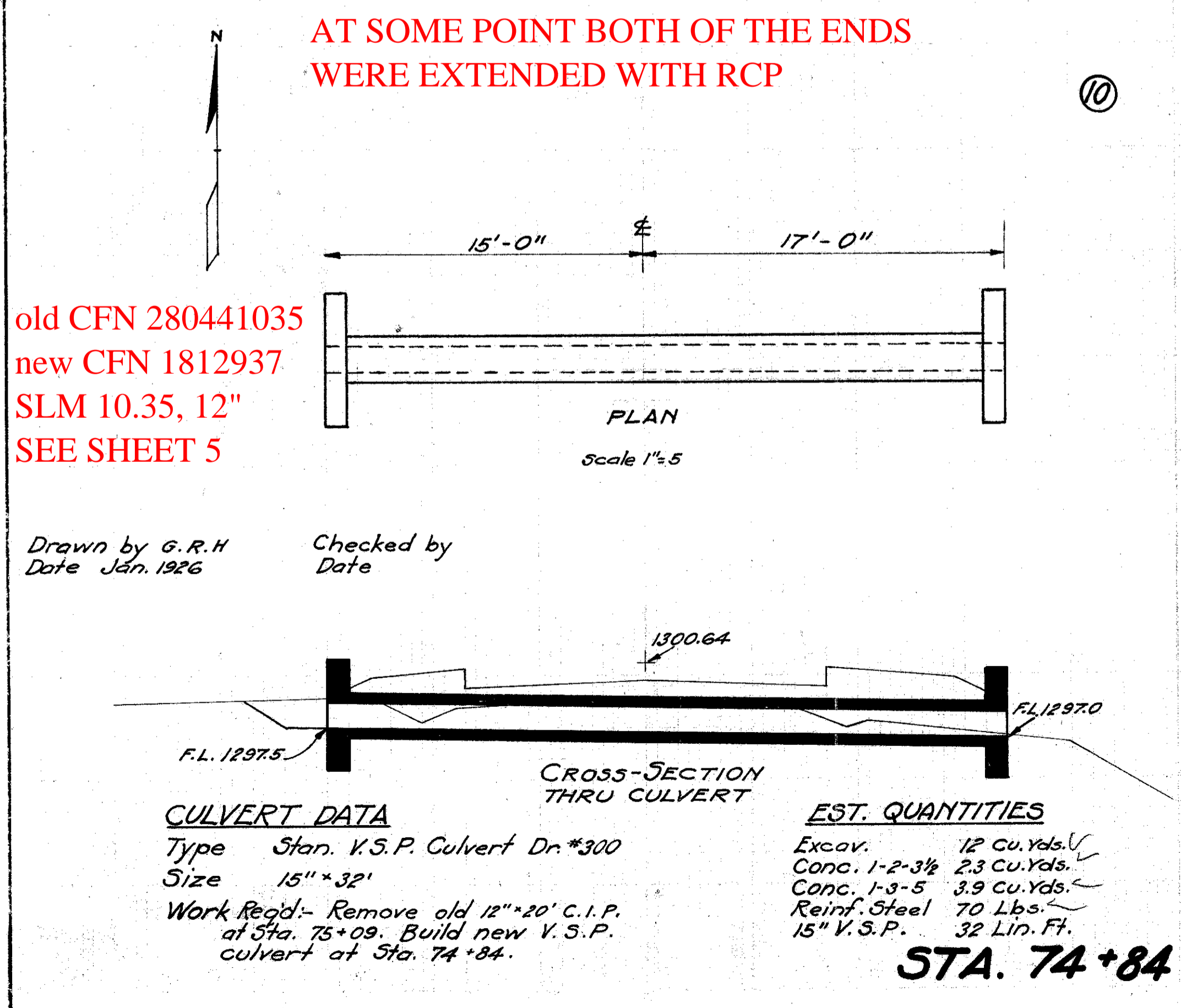
EST. QUANTITIES

Excav. 20 Cu. Yds. ✓
 Conc. 1-2-3/4 3.5 Cu. Yds. ✓
 Conc. 1-3-5 8.2 Cu. Yds. ✓
 Reinf. Steel 105 Lbs. ✓
 24" V.S.P. 42 Lin. Ft. ✓

Drawn by G.R.H.
 Date Jan. 1926

Checked by
 Date

STA. 98+21



old CFN 280441035
 new CFN 1812937
 SLM 10.35, 12"
 SEE SHEET 5

AT SOME POINT BOTH OF THE ENDS WERE EXTENDED WITH RCP

CULVERT DATA

Type Stan. V.S.P. Culvert Dr. #300
 Size 15" x 32'
 Work Req'd:- Remove old 12"x20" C.I.P. at Sta. 75+09. Build new V.S.P. culvert at Sta. 74+84.

EST. QUANTITIES

Excav. 12 Cu. Yds. ✓
 Conc. 1-2-3/4 2.3 Cu. Yds. ✓
 Conc. 1-3-5 3.9 Cu. Yds. ✓
 Reinf. Steel 70 Lbs. ✓
 15" V.S.P. 32 Lin. Ft. ✓

Drawn by G.R.H.
 Date Jan. 1926

Checked by
 Date

STA. 74+84

Remove remains of old pipe. Not required. Abandon.

EST. QUANTITIES

Excav. 1 Cu. Yds.

culverts checked by Q.A.S.
 3-10-26 Fred E. Swineford

STA. 94+55