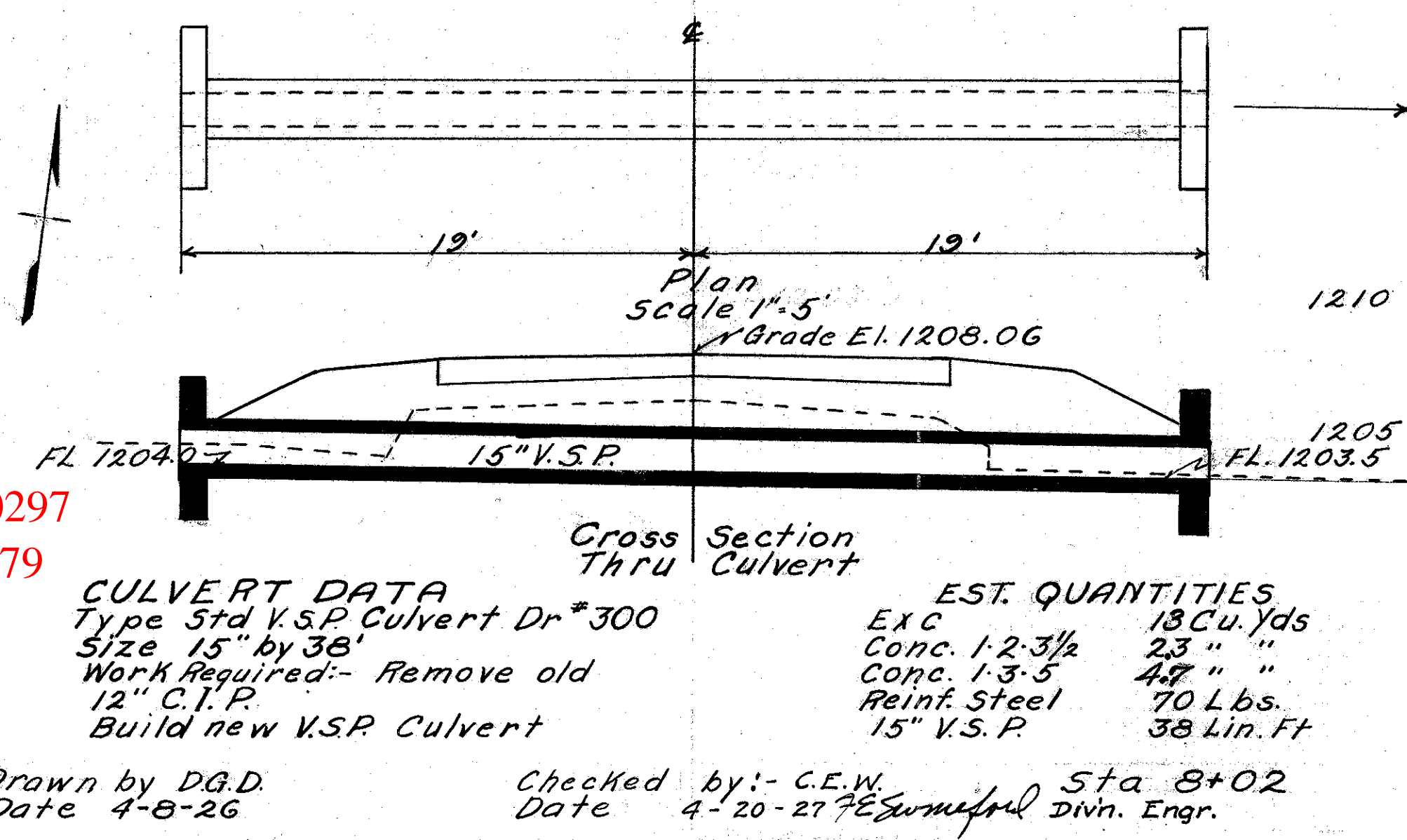
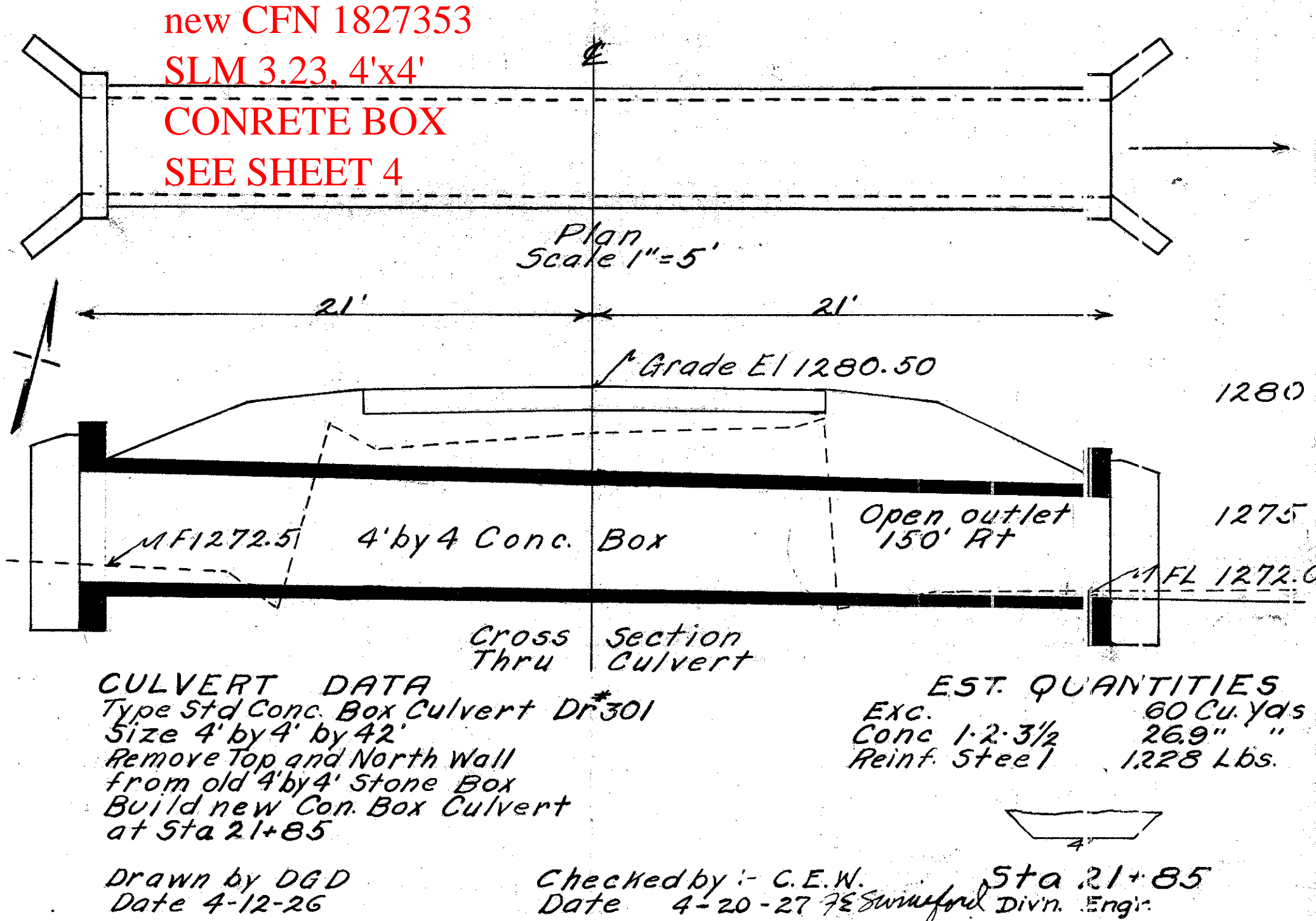


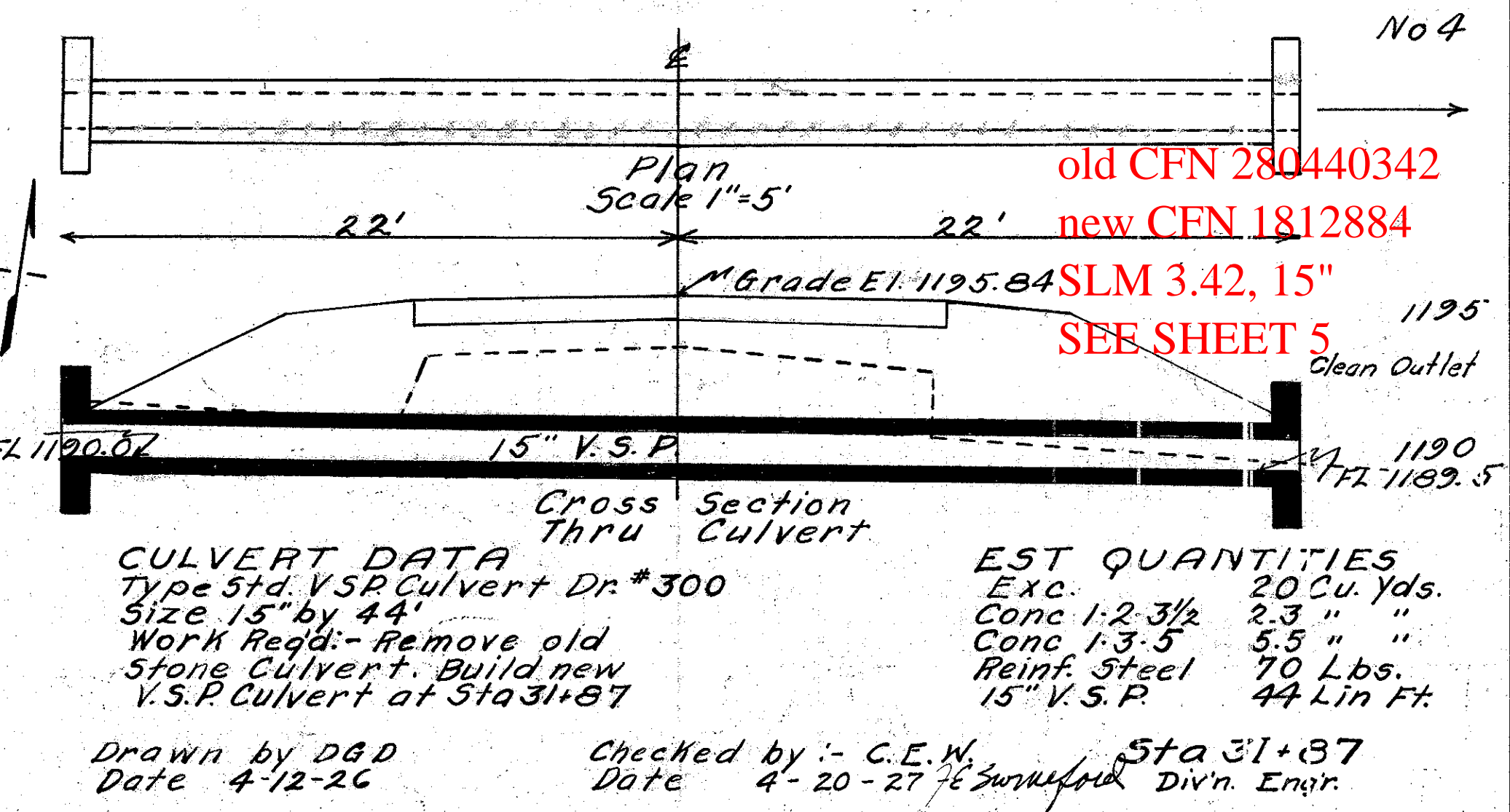
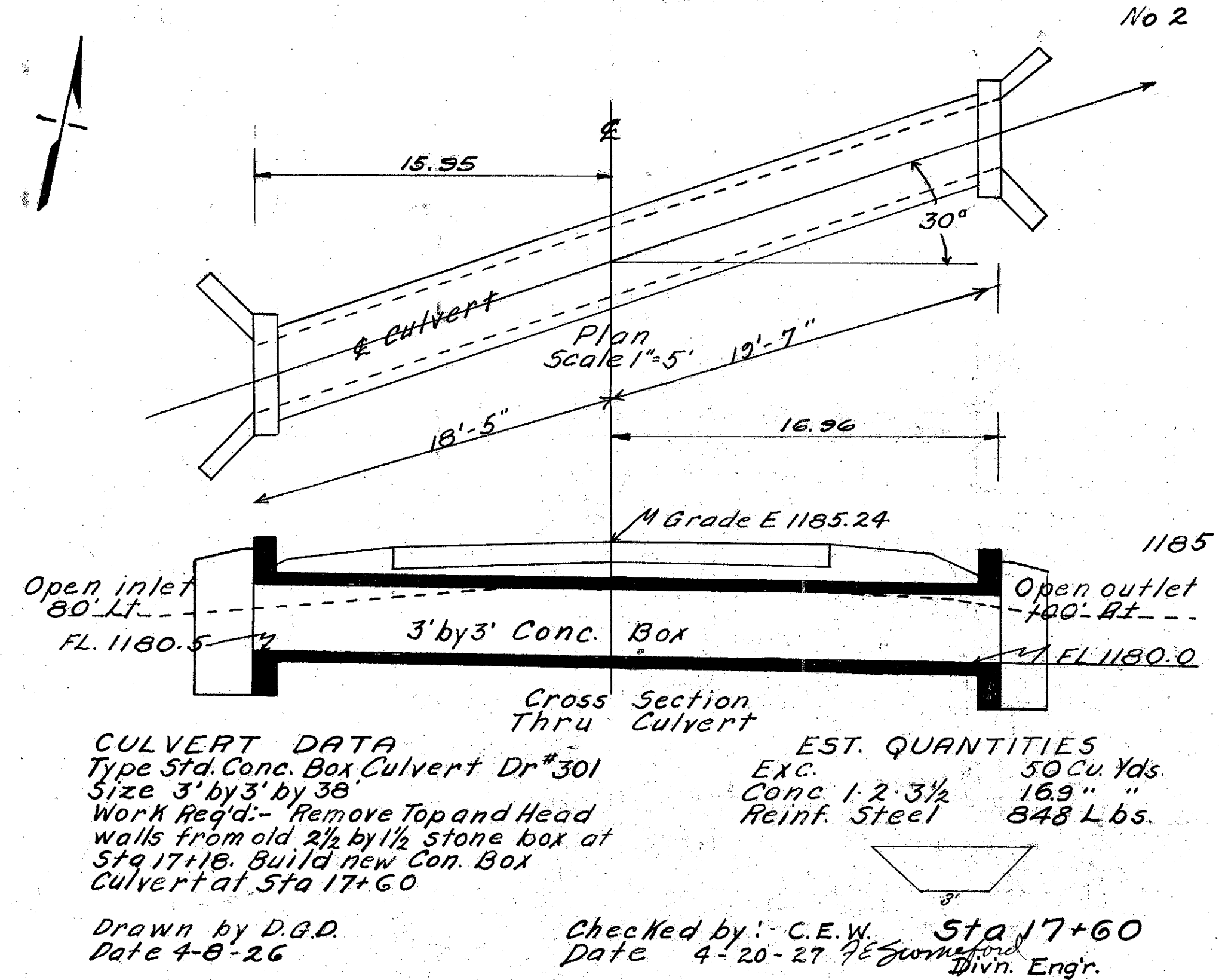
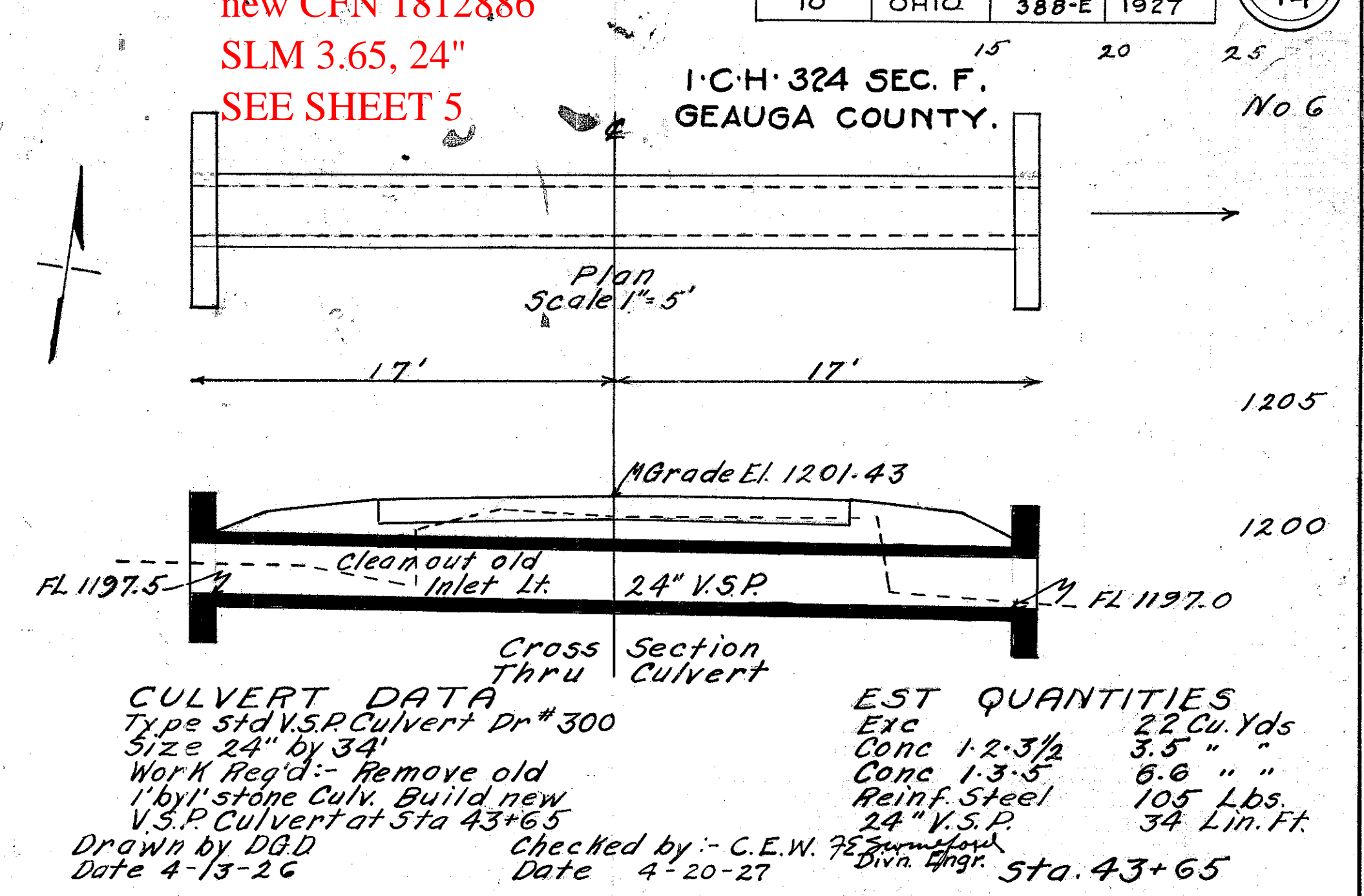
old CFN 280440297
new CFN 1812879
SLM 2.97, 15"
SEE SHEET 4



old CFN 280440323
new CFN 1827353
SLM 3.23, 4'x4'
CONCRETE BOX
SEE SHEET 4

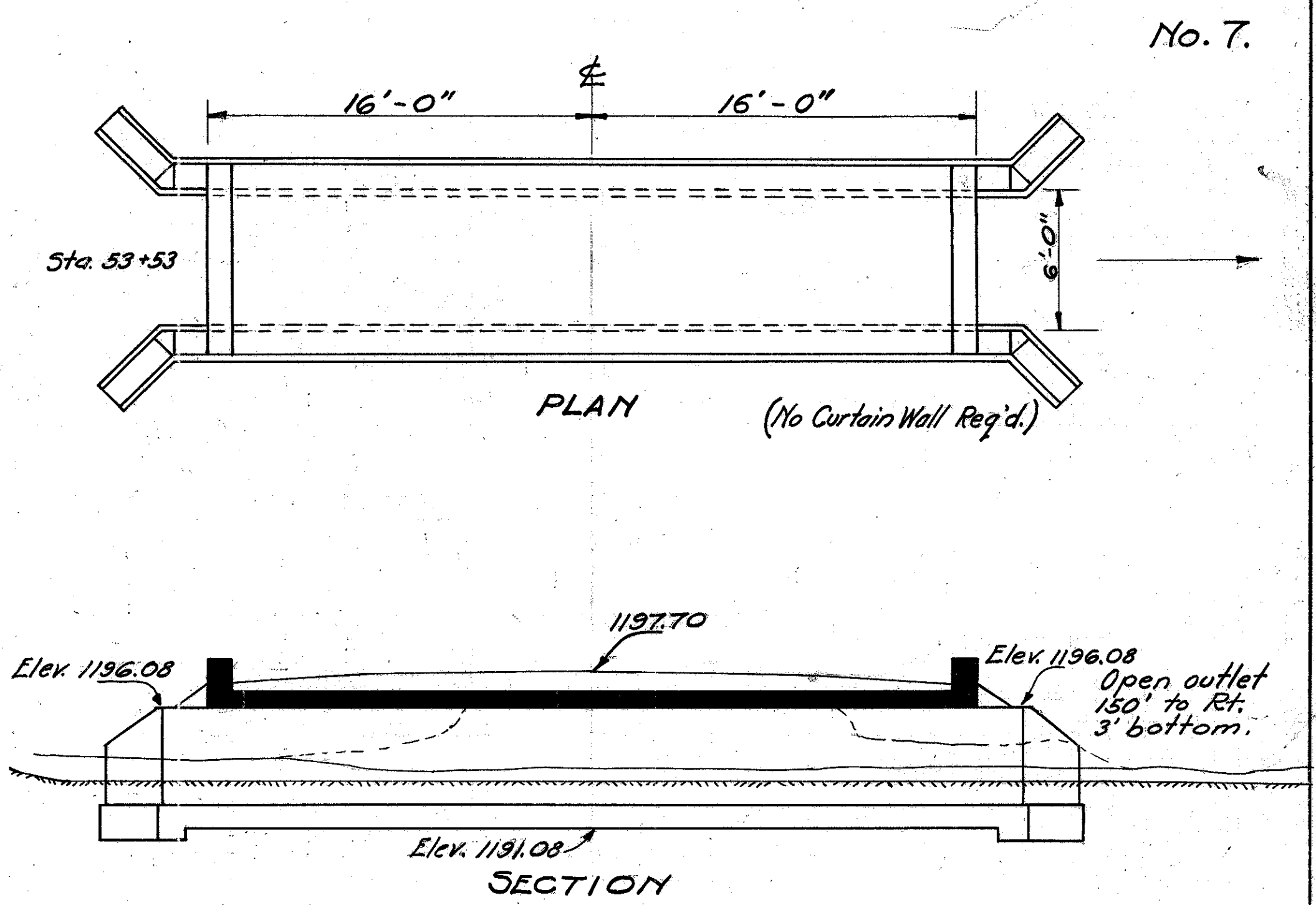


old CFN 280440365
new CFN 1812886
SLM 3.65, 24"
SEE SHEET 5

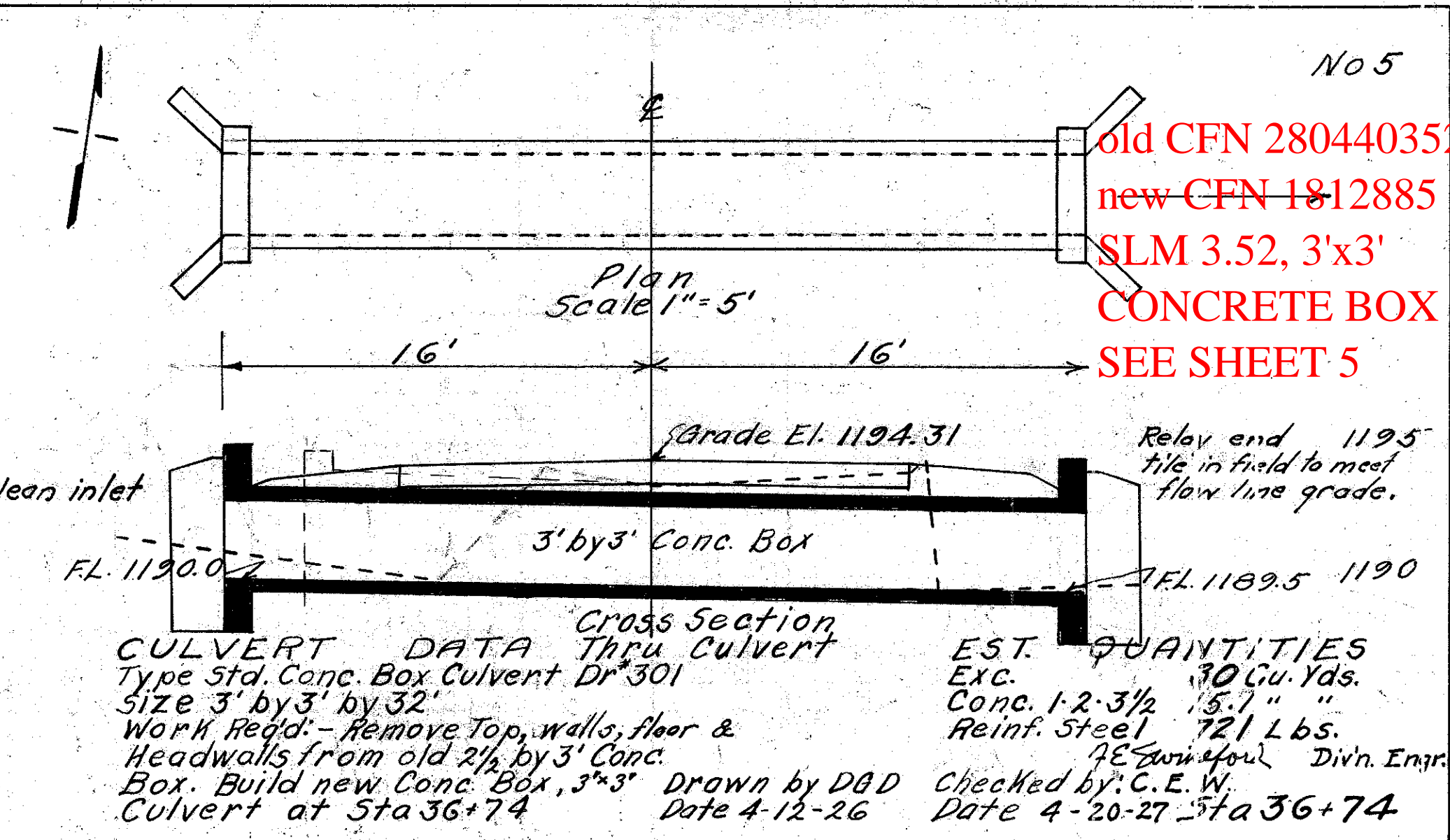


old CFN 280440342
new CFN 1812884
SLM 3.42, 15"
SEE SHEET 5

Remove 20' old 12" C.I.P. stack. Excav. 1 cu. Yd. Abandon.
Sta. 45+73 No. 6a.



old CFN 280440315
new CFN 1812880
SLM 3.15, 3'x3'
CONCRETE BOX
SEE SHEET 4



old CFN 280440352
new CFN 1812885
SLM 3.52, 3'x3'
CONCRETE BOX
SEE SHEET 5

old CFN 280440383
new CFN 1827351
SLM 3.83, 6'x5'
CONCRETE BOX
SEE SHEET 5