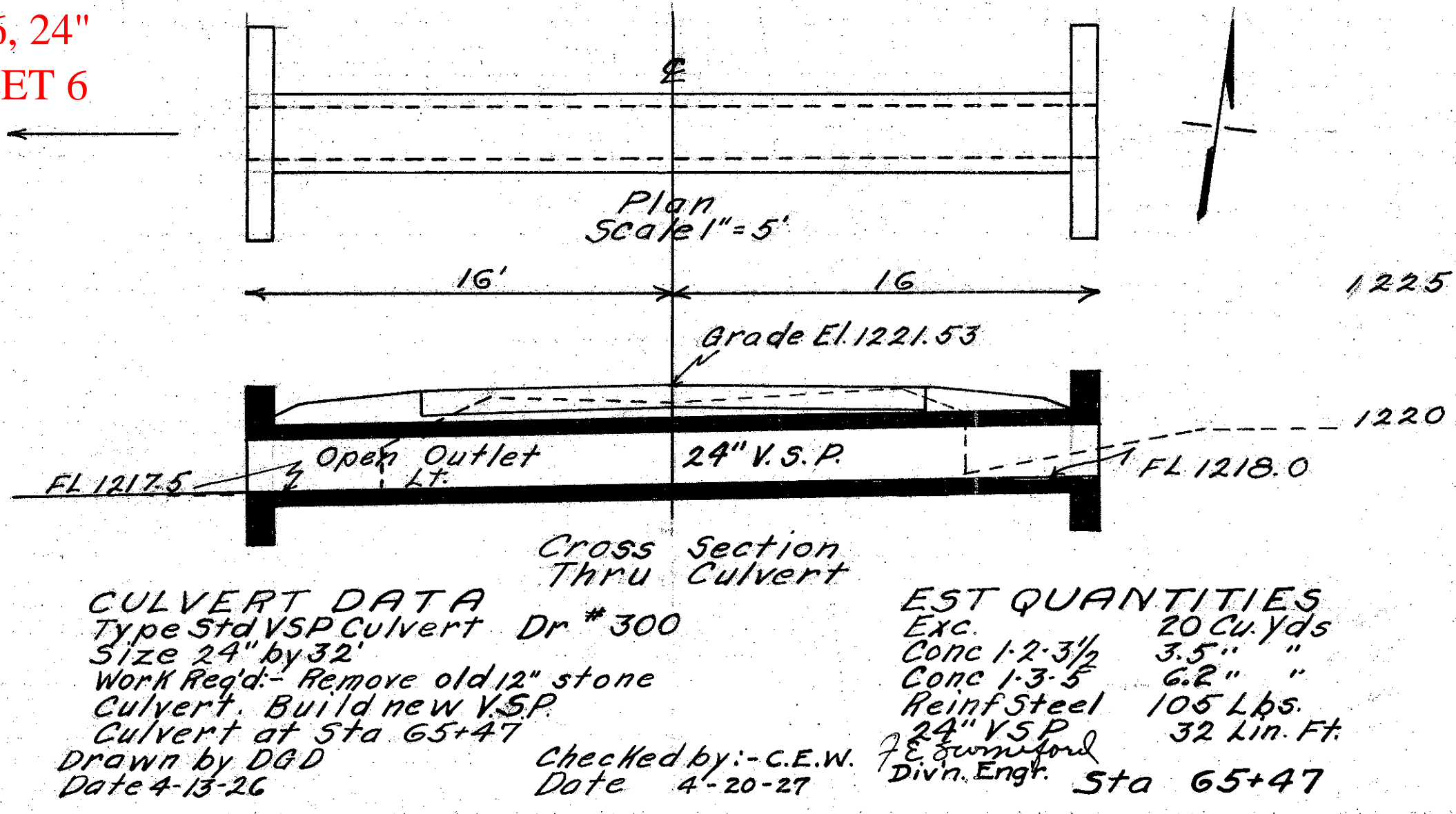


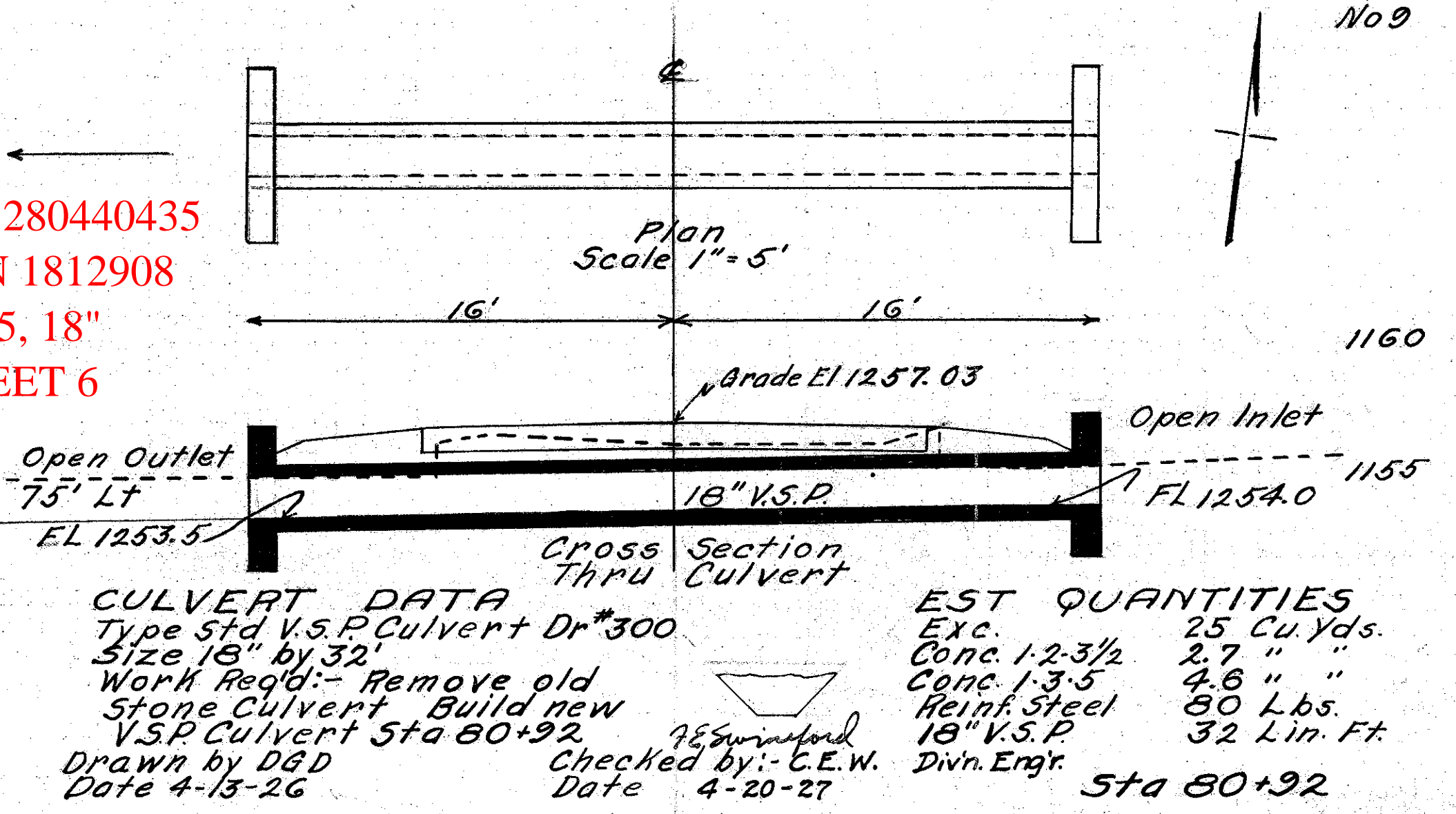
old CFN 280440406
 new CFN 1812887
 SLM 4.06, 24"
 SEE SHEET 6



CULVERT DATA
 Type Std VSP Culvert Dr #300
 Size 24" by 32"
 Work Req: - Remove old 12" stone culvert. Build new VSP Culvert at Sta 65+47
 Drawn by DGD
 Date 4-13-26

EST QUANTITIES
 Exc. 20 Cu. Yds
 Conc 1-2-3/2 3.5" "
 Conc 1-3-5 6.2" "
 Reinf Steel 105 Lbs.
 24" V.S.P. 32 Lin. Ft.
 Checked by: -C.E.W.
 Date 4-20-27
 Divn. Engr. J.E. Swinford
 Sta 65+47

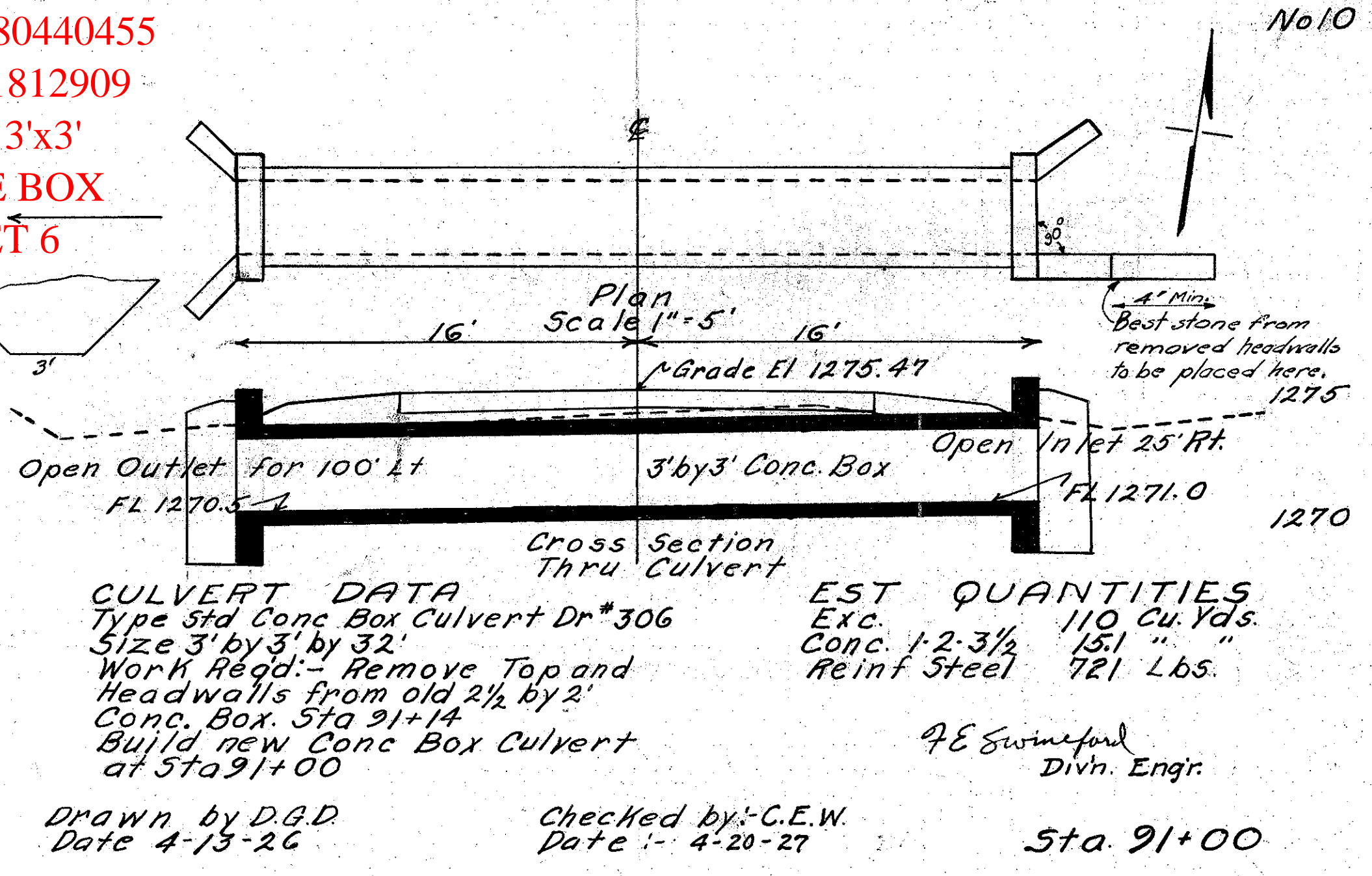
old CFN 280440435
 new CFN 1812908
 SLM 4.35, 18"
 SEE SHEET 6



CULVERT DATA
 Type Std V.S.P. Culvert Dr #300
 Size 18" by 32"
 Work Req: - Remove old stone culvert. Build new V.S.P. Culvert Sta 60+92
 Drawn by DGD
 Date 4-13-26

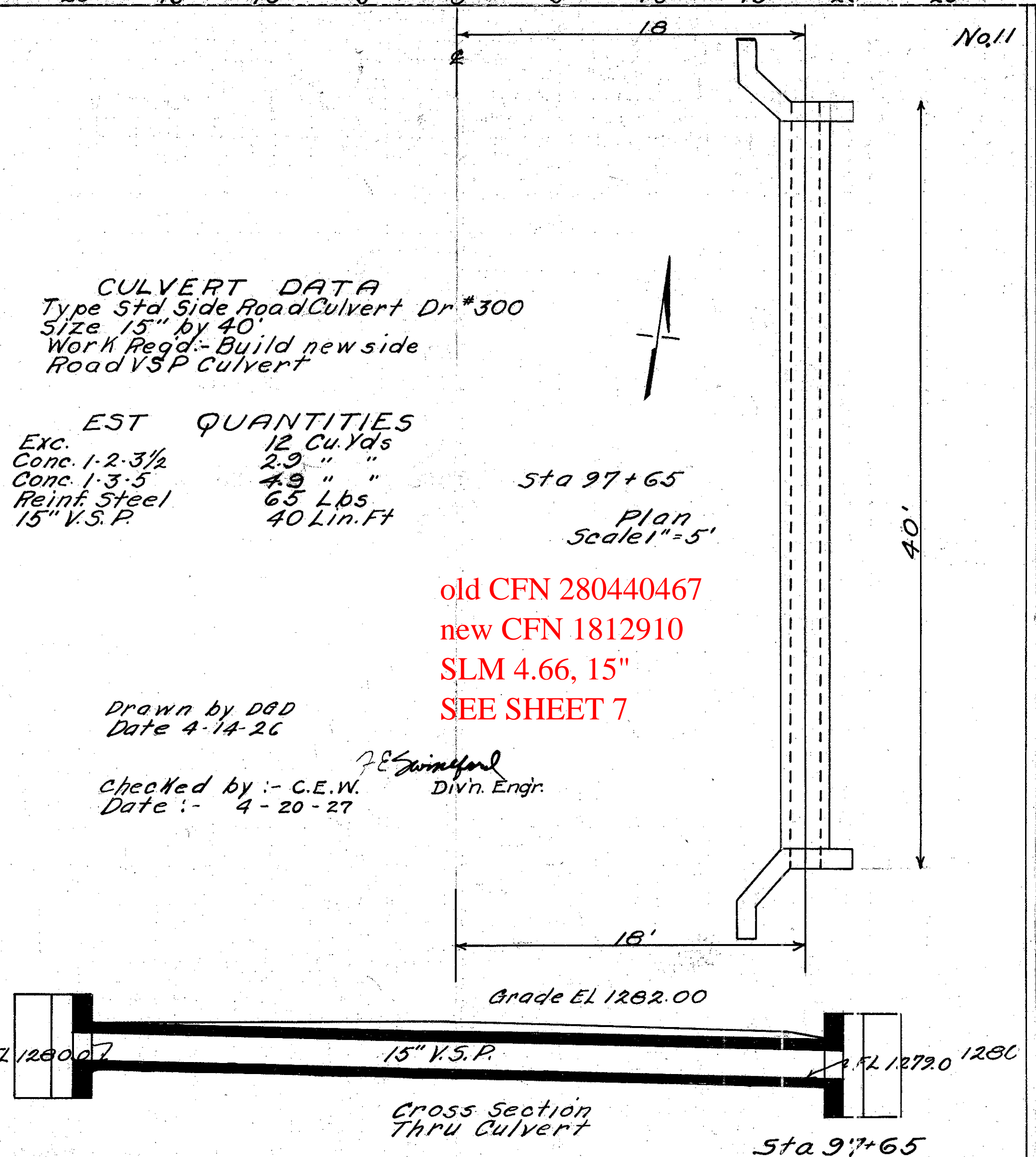
EST QUANTITIES
 Exc. 25 Cu. Yds
 Conc 1-2-3/2 2.7" "
 Conc 1-3-5 4.6" "
 Reinf Steel 80 Lbs.
 18" V.S.P. 32 Lin. Ft.
 Checked by: -C.E.W.
 Date 4-20-27
 Divn. Engr. J.E. Swinford
 Sta 60+92

old CFN 280440455
 new CFN 1812909
 SLM 4.55, 3'x3'
 CONCRETE BOX
 SEE SHEET 6



CULVERT DATA
 Type Std Conc Box Culvert Dr #306
 Size 3' by 3' by 32"
 Work Req: - Remove Top and Headwalls from old 2 1/2 by 2' Conc. Box. Sta 91+14. Build new Conc Box Culvert at Sta 91+00
 Drawn by DGD
 Date 4-13-26

EST QUANTITIES
 Exc. 110 Cu. Yds
 Conc 1-2-3/2 15.1" "
 Reinf Steel 721 Lbs.
 Checked by: -C.E.W.
 Date 4-20-27
 Divn. Engr. J.E. Swinford
 Sta 91+00

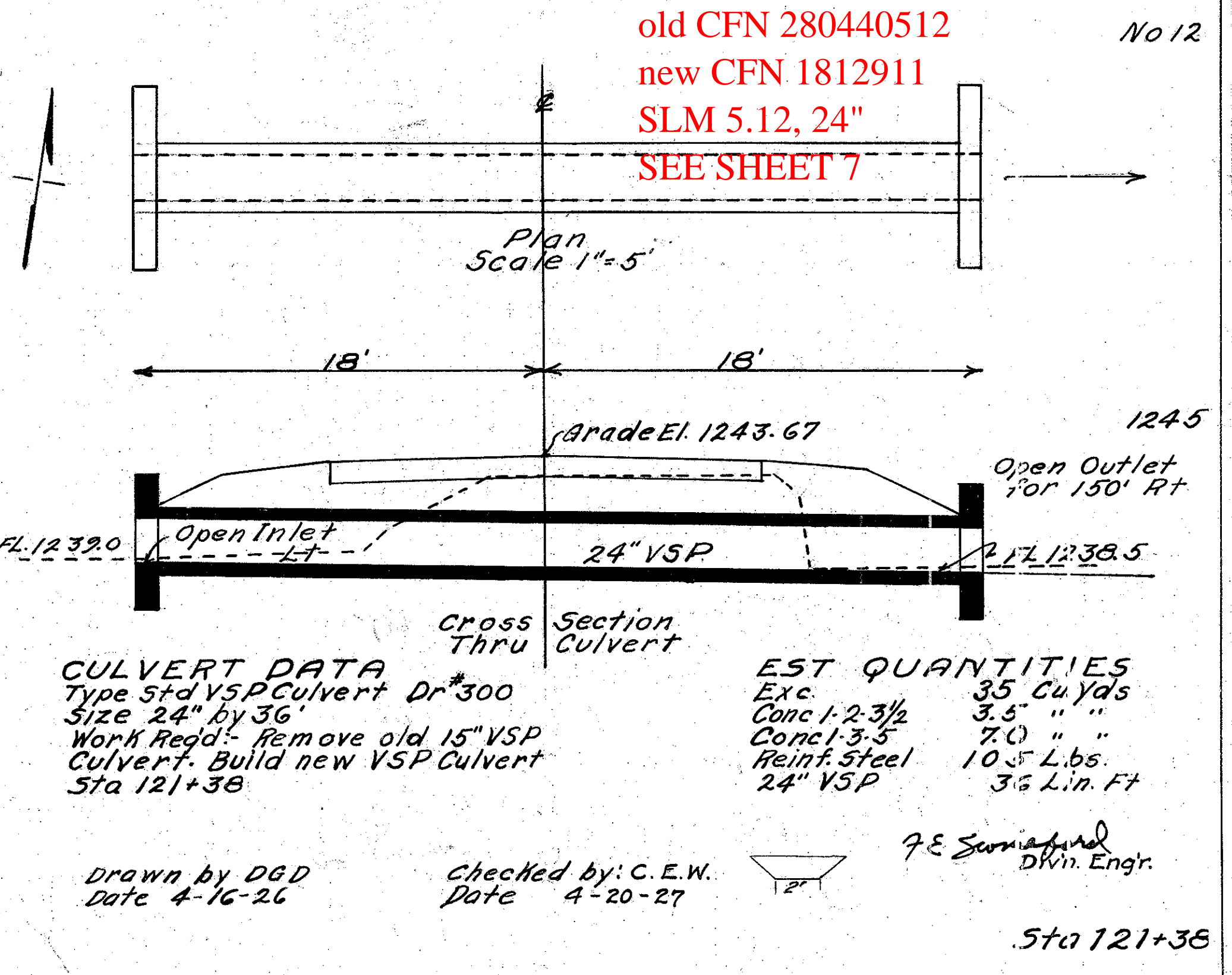
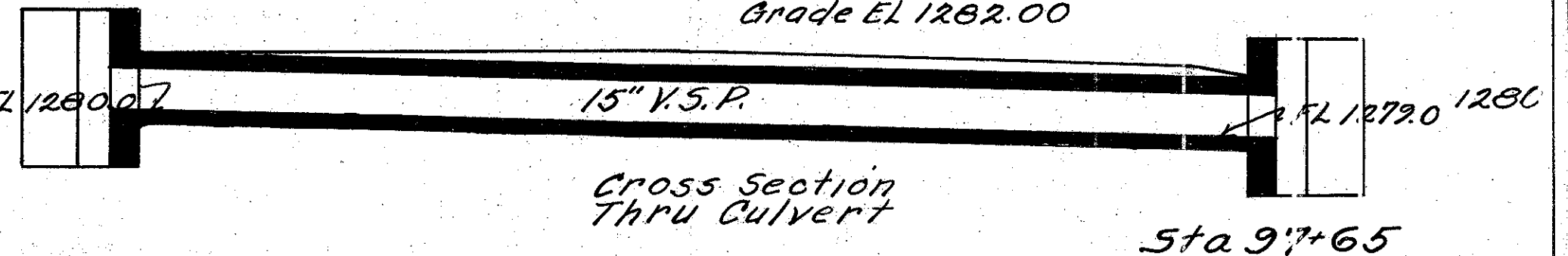


CULVERT DATA
 Type Std Side Road Culvert Dr #300
 Size 15" by 40"
 Work Req: - Build new side Road VSP Culvert

EST QUANTITIES
 Exc. 12 Cu. Yds
 Conc 1-2-3/2 2.9" "
 Conc 1-3-5 4.9" "
 Reinf Steel 65 Lbs.
 15" V.S.P. 40 Lin. Ft.

old CFN 280440467
 new CFN 1812910
 SLM 4.66, 15"
 SEE SHEET 7

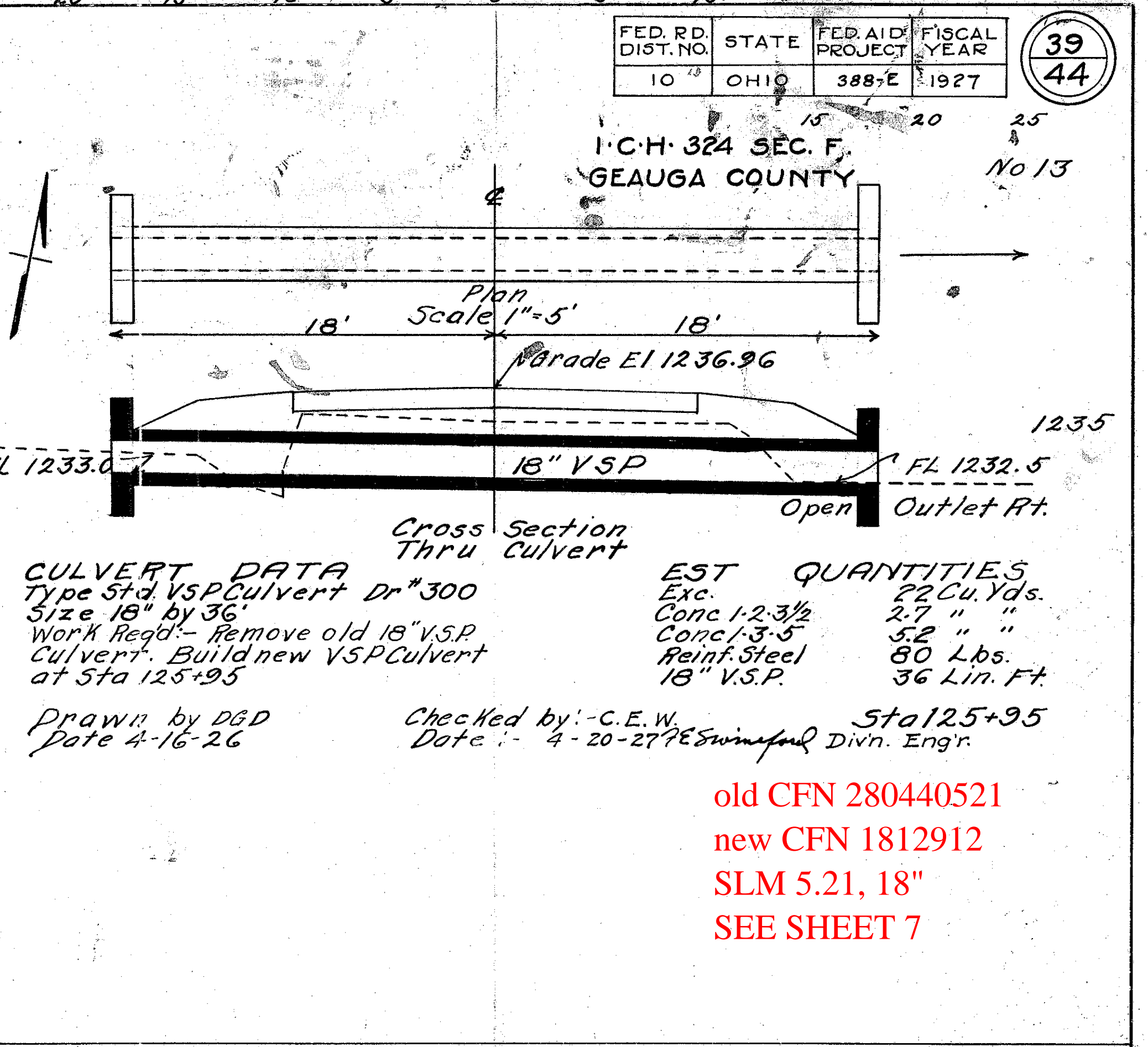
Drawn by DGD
 Date 4-14-26
 Checked by: -C.E.W.
 Date 4-20-27
 Divn. Engr. J.E. Swinford



CULVERT DATA
 Type Std VSP Culvert Dr #300
 Size 24" by 36"
 Work Req: - Remove old 15" VSP Culvert. Build new VSP Culvert Sta 121+38

EST QUANTITIES
 Exc. 35 Cu. Yds
 Conc 1-2-3/2 3.5" "
 Conc 1-3-5 7.0" "
 Reinf Steel 105 Lbs.
 24" V.S.P. 36 Lin. Ft.

Drawn by DGD
 Date 4-16-26
 Checked by: -C.E.W.
 Date 4-20-27
 Divn. Engr. J.E. Swinford
 Sta 121+38



FED. RD. DIST. NO.	STATE	FED. AID PROJECT	FISCAL YEAR	39 44
10	OHIO	388-E	1927	

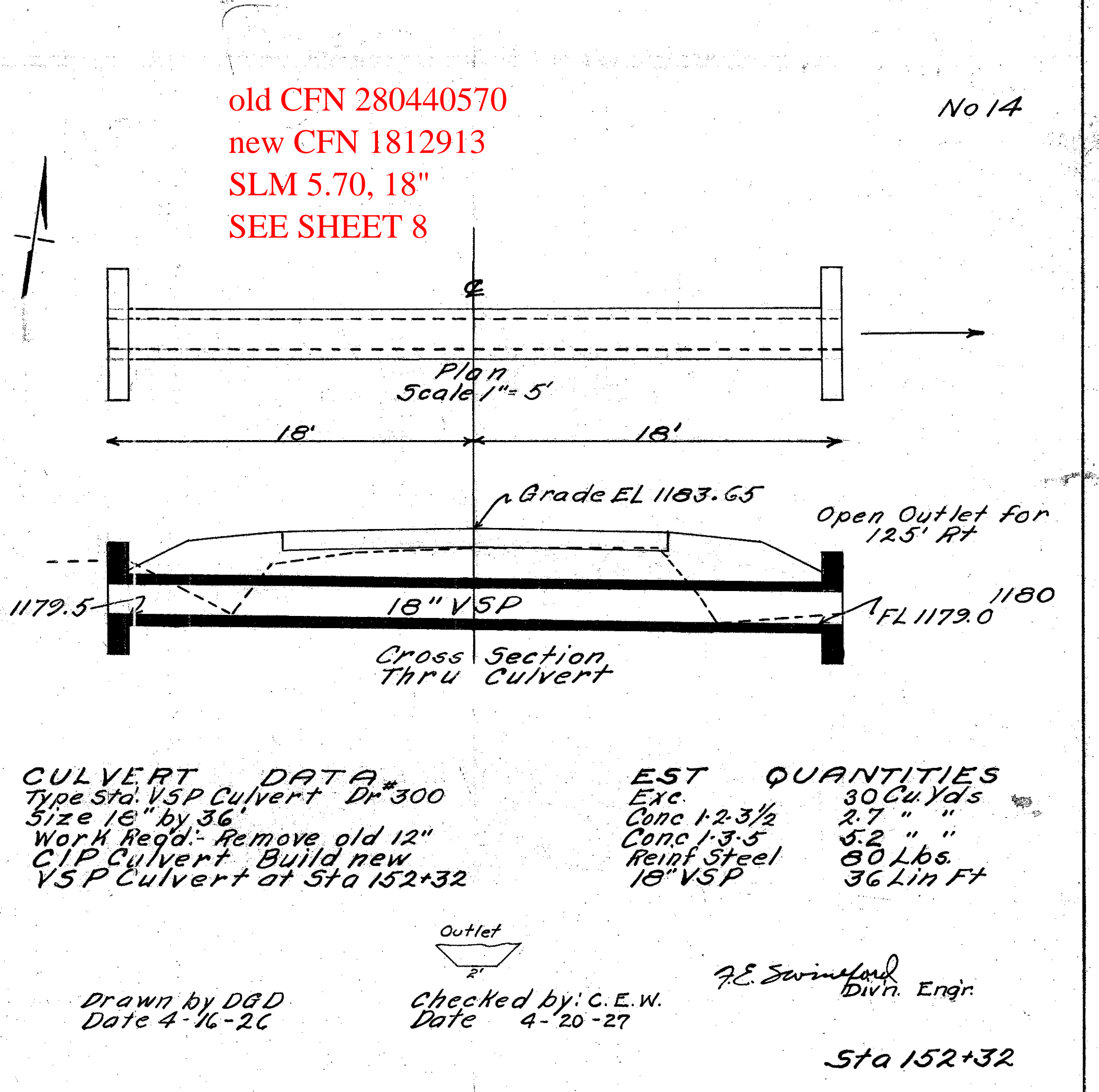
1-C.H. 324 SEC. F.
 GAUGA COUNTY
 No 13

CULVERT DATA
 Type Std VSP Culvert Dr #300
 Size 18" by 36"
 Work Req: - Remove old 18" V.S.P. Culvert. Build new VSP Culvert at Sta 125+95
 Drawn by DGD
 Date 4-16-26

EST QUANTITIES
 Exc. 22 Cu. Yds
 Conc 1-2-3/2 2.7" "
 Conc 1-3-5 5.2" "
 Reinf Steel 80 Lbs.
 18" V.S.P. 36 Lin. Ft.

Checked by: -C.E.W.
 Date 4-20-27
 Divn. Engr. J.E. Swinford
 Sta 125+95

old CFN 280440521
 new CFN 1812912
 SLM 5.21, 18"
 SEE SHEET 7



CULVERT DATA
 Type Std VSP Culvert Dr #300
 Size 18" by 36"
 Work Req: - Remove old 12" C.P. Culvert. Build new VSP Culvert at Sta 152+32

EST QUANTITIES
 Exc. 30 Cu. Yds
 Conc 1-2-3/2 2.7" "
 Conc 1-3-5 5.2" "
 Reinf Steel 80 Lbs.
 18" V.S.P. 36 Lin. Ft.

Drawn by DGD
 Date 4-16-26
 Checked by: -C.E.W.
 Date 4-20-27
 Divn. Engr. J.E. Swinford
 Sta 152+32