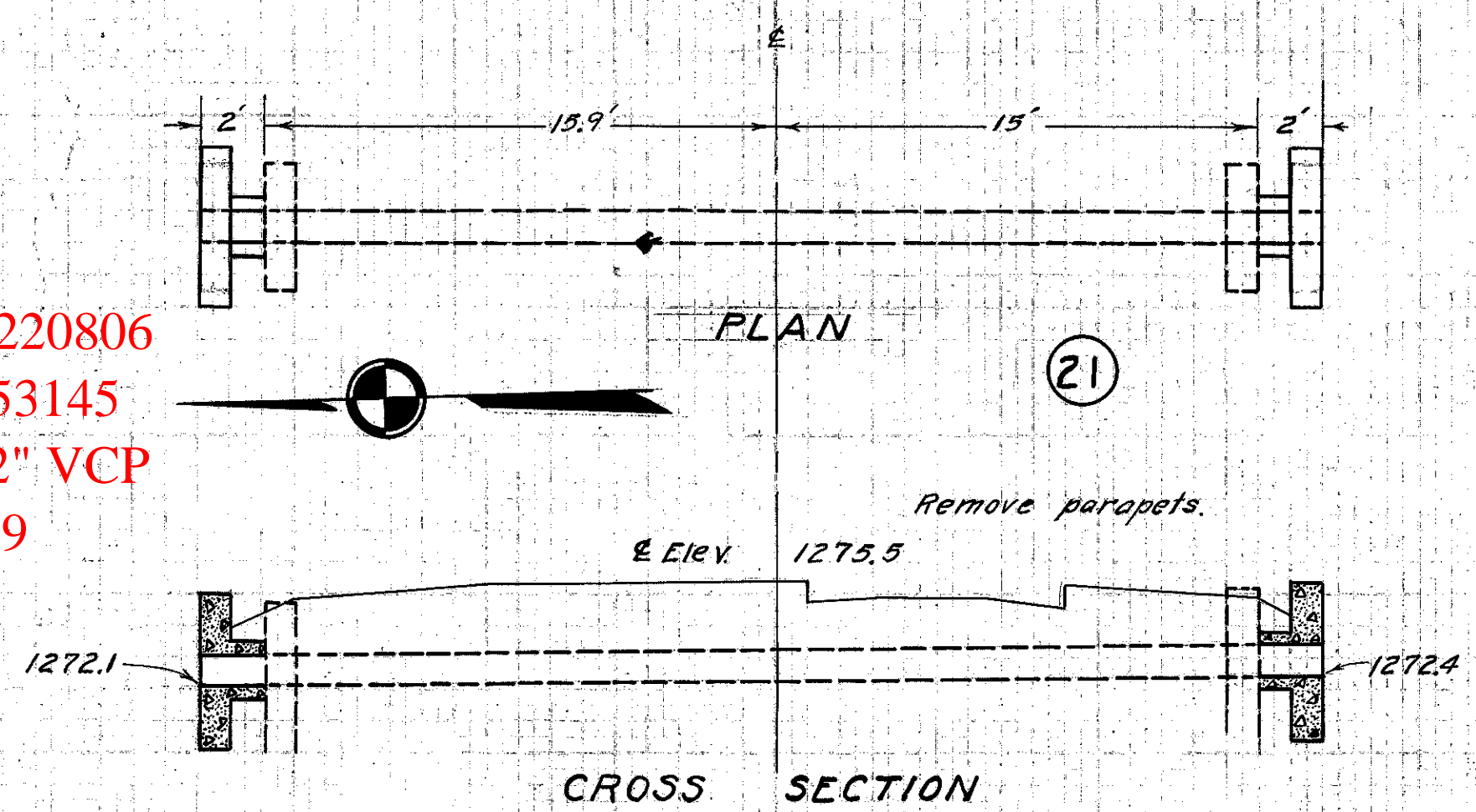
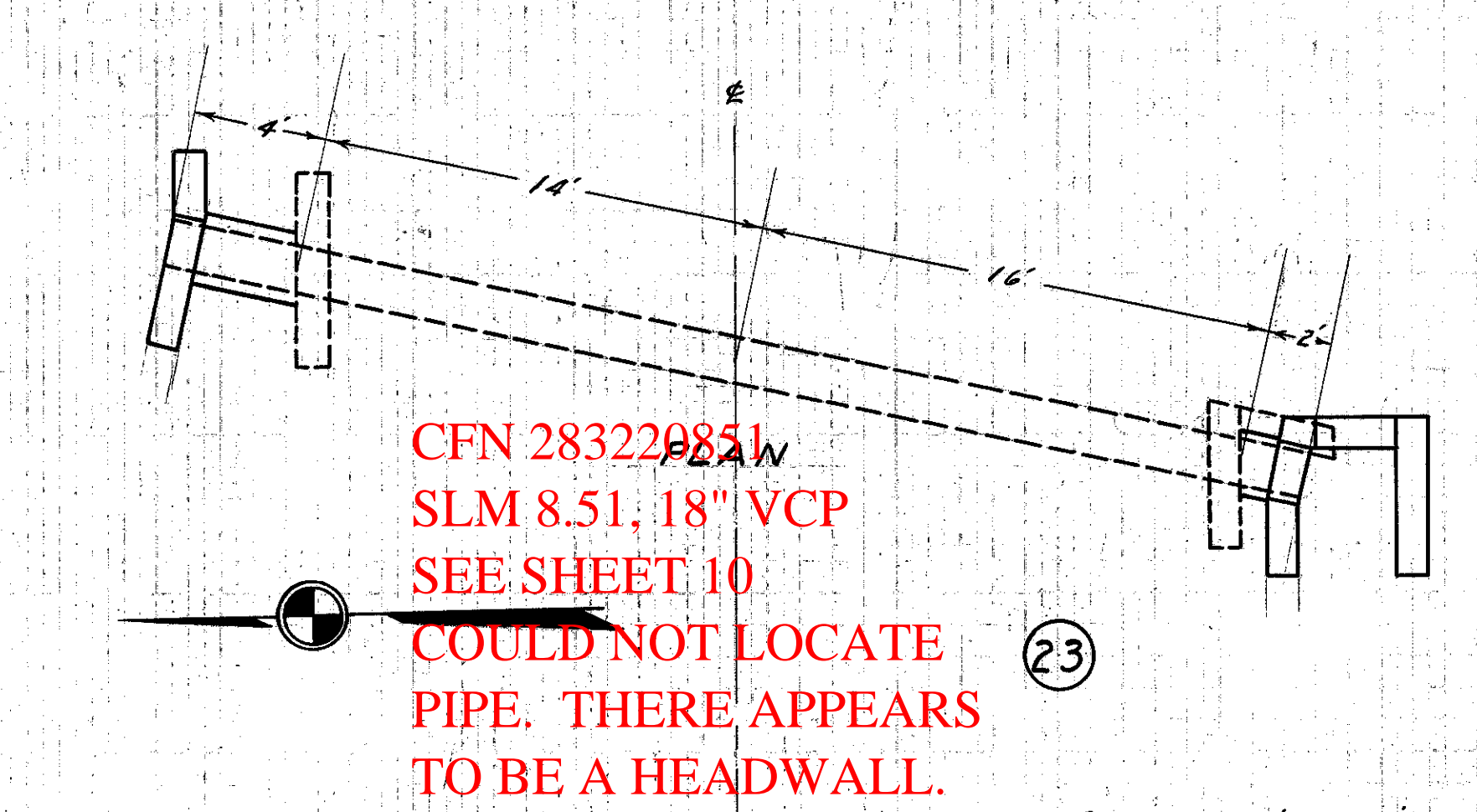


old CFN 283220806
new CFN 1853145
SLM 8.06, 12" VCP
SEE SHEET 9

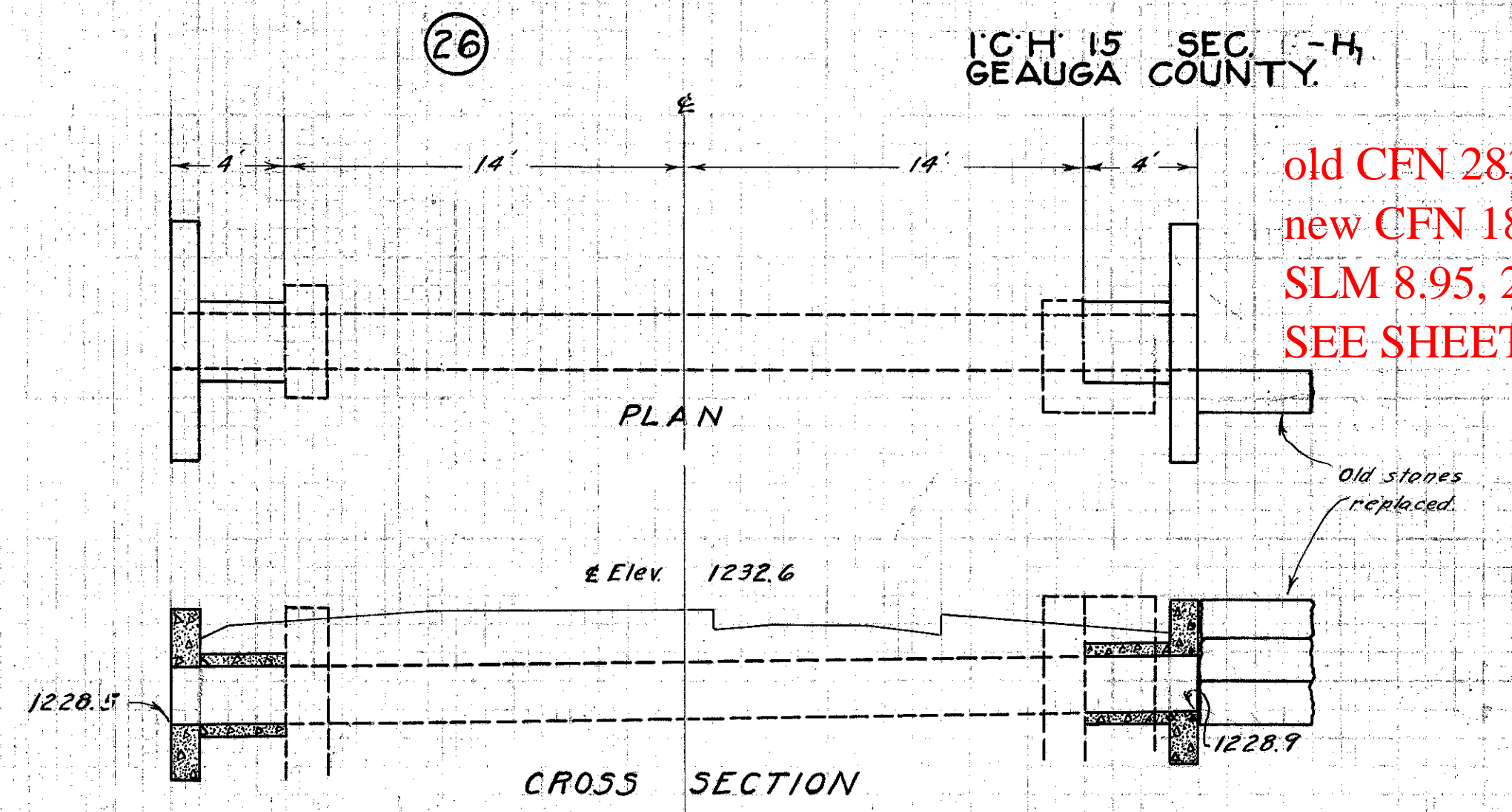


CULVERT DATA		EST. QUANTITIES	
Type : Std. V.S.P. Culvert Dr. #300	Size : 12"	Excav.	7.0 cu.yds.
Work Req. Extend 2' Rt. + Lt.	Drawn by R.E.F. Date 4/19/27	Conc. 1-5 1/2	2.0 cu.yds.
Checked by C.E.W. Date 7-15-27	Div'n. Engr. L.A. Breen	Conc. 1-8	0.2 cu.yd.
		Reinf. Steel	65 lbs.
		12" V.S.P. Dowels	4 lin. ft. 8 complete
			Sta. 279 + 93



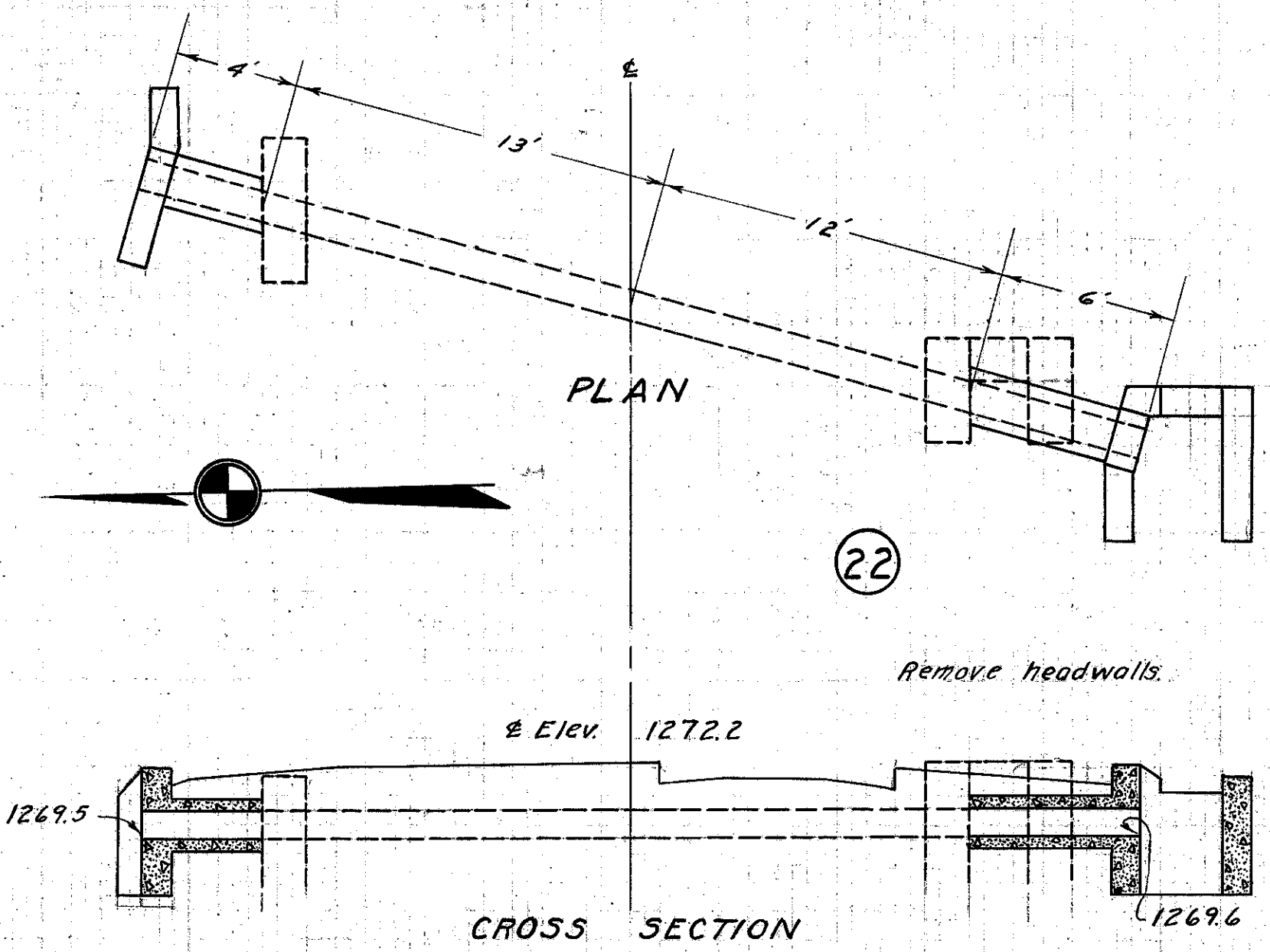
CFN 283220851
SLM 8.51, 18" VCP
SEE SHEET 10
COULD NOT LOCATE PIPE. THERE APPEARS TO BE A HEADWALL.
REMOVED FROM INVENTORY.

CULVERT DATA		EST. QUANTITIES	
Type : Std. Hillside Culvert Dr. #300	Size : 18"	Excav.	14.0 cu.yds.
Work Req. Extend 4' Lt. + 2' Rt.	Drawn by R.E.F. Date 4/19/27	Conc. 1-5 1/2	3.0 cu.yds.
Checked by C.E.W. Date 7-15-27	Div'n. Engr. L.A. Breen	Conc. 1-8	0.6 cu.yd.
		Reinf. Steel	45 lbs.
		18" V.S.P. Dowels	6 lin. ft. 8 complete
			Sta. 303 + 94

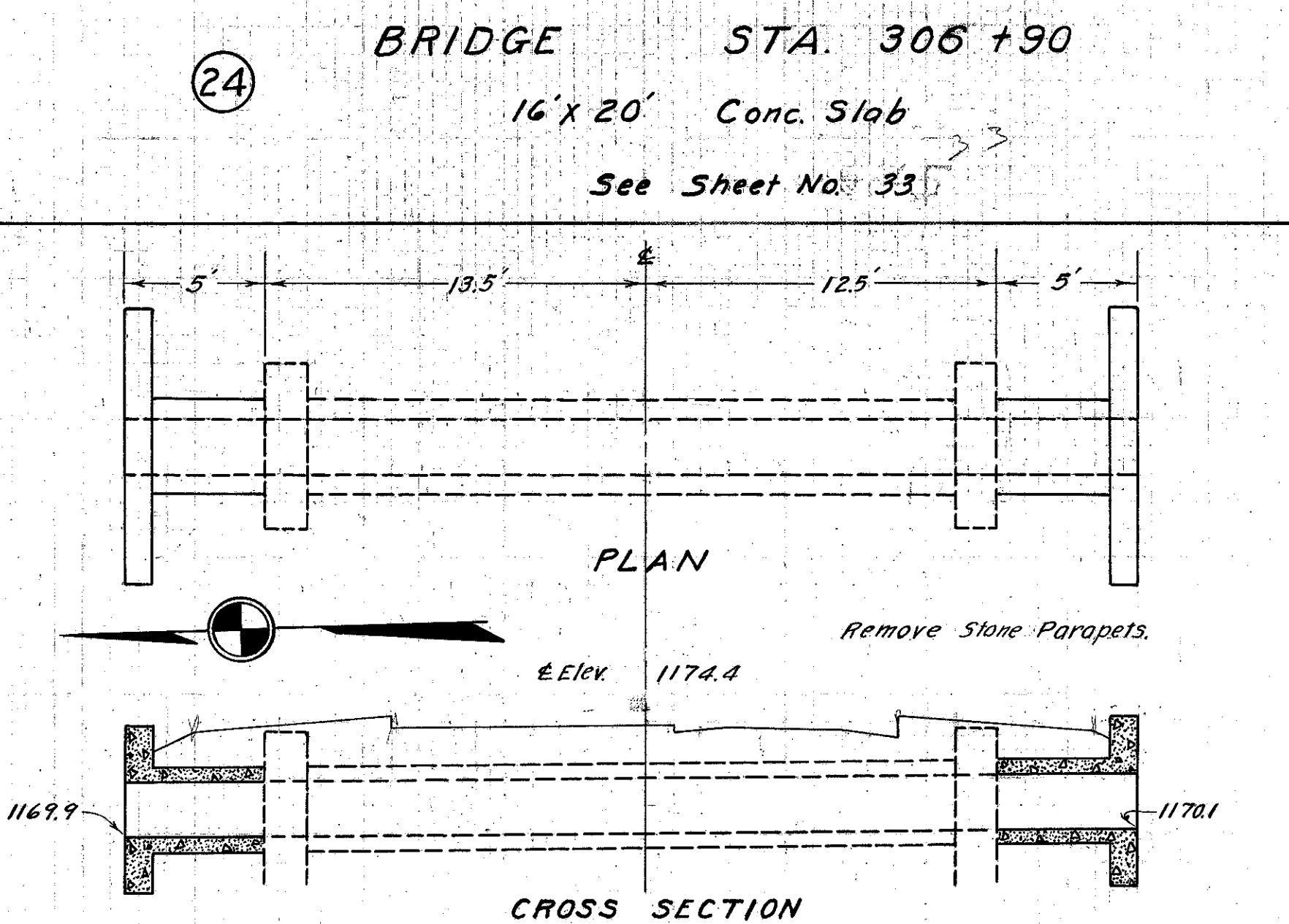


old CFN 283220895
new CFN 1852055
SLM 8.95, 24" VCP
SEE SHEET 10

CULVERT DATA		EST. QUANTITIES	
Type : Std. V.S.P. Culvert Dr. #300	Size : 24"	Excav.	9.0 cu.yds.
Work Req. Extend 4' Rt. + 4' Lt. Build wing on rt. using old stones as shown.	Drawn by R.E.F. Date 4/20/27	Conc. 1-5 1/2	3.5 cu.yds.
Checked by C.E.W. Date 7-15-27	Div'n. Engr. L.A. Breen	Conc. 1-8	1.2 cu.yds.
		Reinf. Steel	105 lbs.
		24" V.S.P. Dowels	8 lin. ft. 8 complete
			Sta. 326 + 80

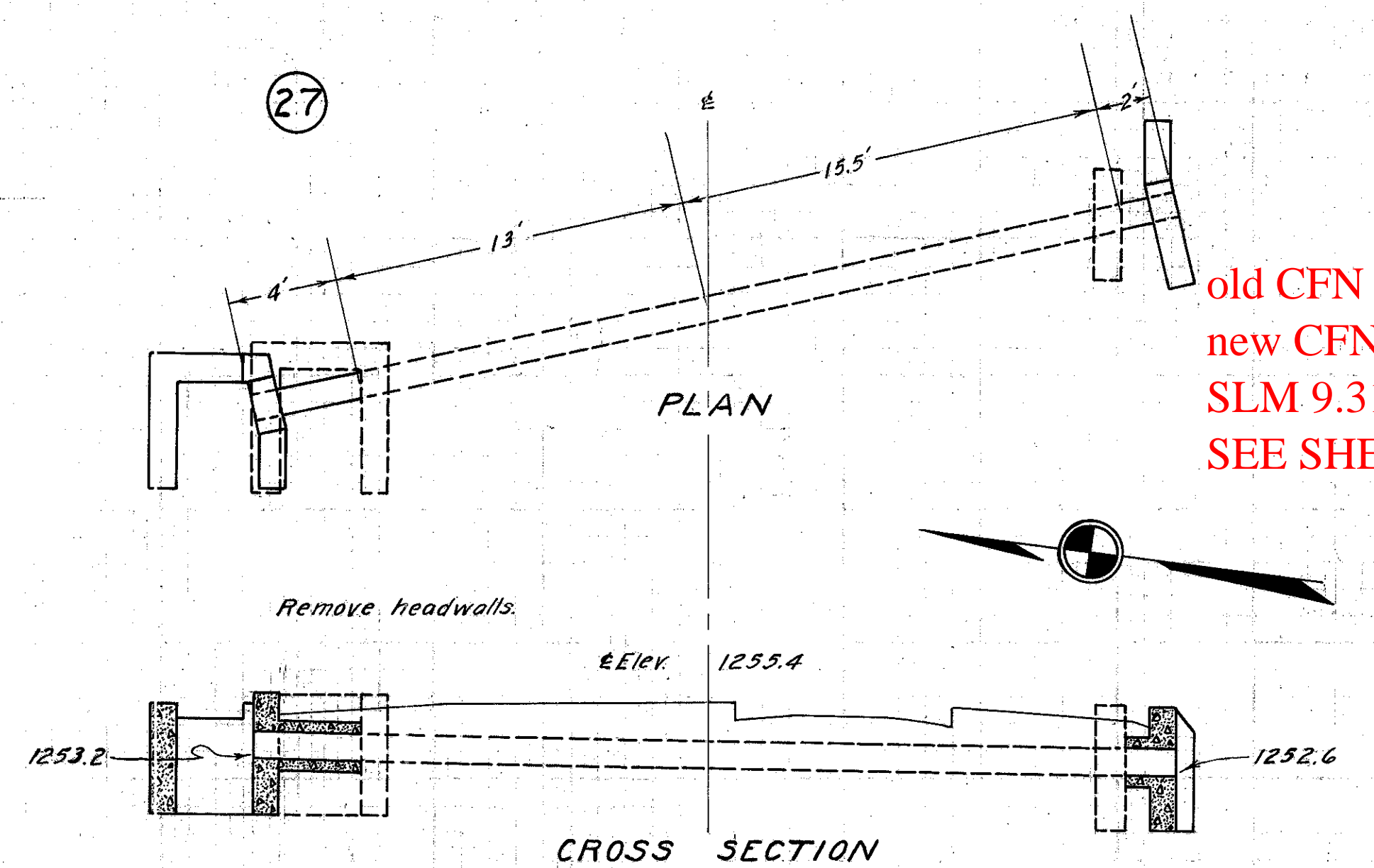


CULVERT DATA		EST. QUANTITIES	
Type : Std. Hillside Culvert Dr. #300	Size : 12"	Excav.	15 cu.yds.
Work Req. Extend 4' Lt. + 6' Rt.	Drawn by R.E.F. Date 4/19/27	Conc. 1-5 1/2	2.7 cu.yds.
Checked by C.E.W. Date 7-15-27	Div'n. Engr. L.A. Breen	Conc. 1-8	0.9 cu.yd.
		Reinf. Steel	40 lbs.
		12" V.S.P. Dowels (16in)	10 lin. ft. 4 complete
			Sta. 288 + 48



BRIDGE STA. 306 + 90
16' x 20' Conc. Slab
See Sheet No. 33

CULVERT DATA		EST. QUANTITIES	
Type : Std. Box Culvert Dr. #301	Size : 2' x 2'	Excav.	14.0 cu.yds.
Work Req. Extend 5' Rt. + 5' Lt.	Drawn by R.E.F. Date 4/20/27	Conc. 1-5 1/2	6.0 cu.yds.
Checked by C.E.W. Date 7-15-27	Div'n. Engr. L.A. Breen	Reinf. Steel	209 lbs.
		Dowels	16 complete
			Sta. 315 + 83



old CFN 283220931
new CFN 1852056
SLM 9.31, 12" VCP
SEE SHEET 11

CULVERT DATA		EST. QUANTITIES	
Type : Std. Hillside Culvert Dr. #300	Size : 12"	Excav.	11.0 cu.yds.
Work Req. Extend 4' Lt. + 2' Rt.	Drawn by R.E.F. Date 4/21/27	Conc. 1-5 1/2	2.7 cu.yds.
Checked by C.E.W. Date 7-15-27	Div'n. Engr. L.A. Breen	Conc. 1-8	0.4 cu.yd.
		Reinf. Steel	40 lbs.
		12" V.S.P. Dowels	6 lin. ft. 8 complete
			Sta. 346 + 05

old CFN 283220822
new CFN 1853146
SLM 8.06, 12" VCP
SEE SHEET 9

old CFN 283220874
new CFN 1852054
SLM 8.74, 2'x2'
CONCRETE BOX
SEE SHEET 10