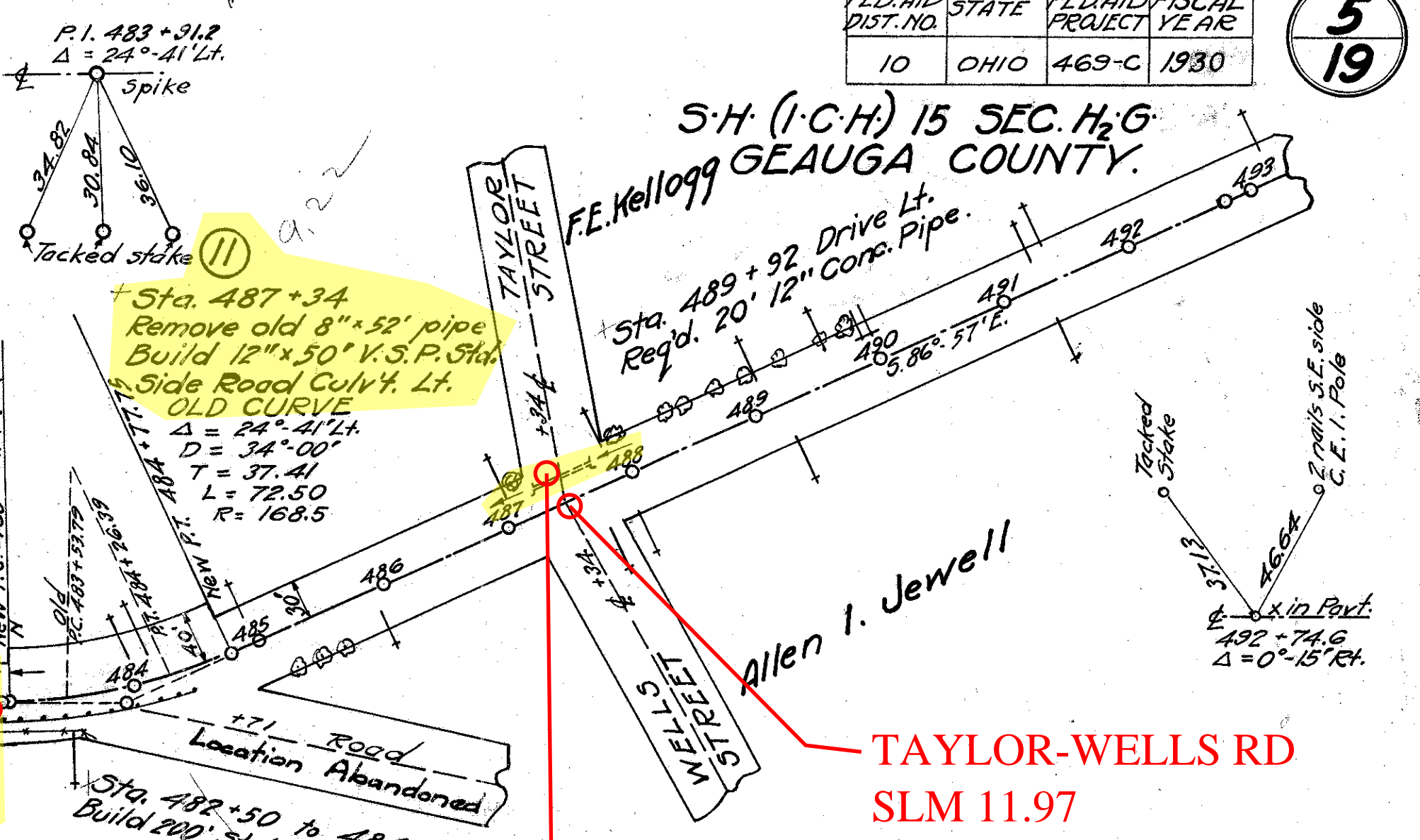


Left				Right			
Edge of Pav't.	Width	Station	Grade Elev.	Width	Edge of Pav't.	Station	Grade Elev.
1151.90	9.00	482+01.44	1152.05	9.00	1151.90		
1152.71	9.15	+16.44	1152.86	9.00	1152.98		
1153.54	9.37	+31.44	1153.69	9.00	1154.07		
1154.44	10.30	+76.44	1154.59	9.00	1155.24		
1155.43	11.34	+148+01.44	1155.58	9.00	1156.49		
1156.49	12.18	+16.44	1156.64	9.00	1157.81		
1157.62	12.50	+51.44	1157.77	9.00	1159.21		
1158.75	12.50	+76	1158.90	9.00	1160.24		
1160.02	12.50	+148+01.44	1160.17	9.00	1161.61		
1161.50	12.50	+77.75	1161.65	9.00	1163.09		
1162.88	12.18	+52.75	1163.03	9.00	1164.20		
1164.25	11.34	+77.75	1164.40	9.00	1165.31		
1165.63	10.30	+148+01.44	1165.78	9.00	1166.43		
1167.00	9.37	+77.75	1167.15	9.00	1167.53		
1168.32	9.15	+52.75	1168.53	9.00	1168.65		
1169.73	9.00	+77.75	1169.90	9.00	1169.82		
Extra Pavement 79.5 Sq. Yds.							

Note $79.5 \div 2 = 39.75$ Sq. Yds. R & L.

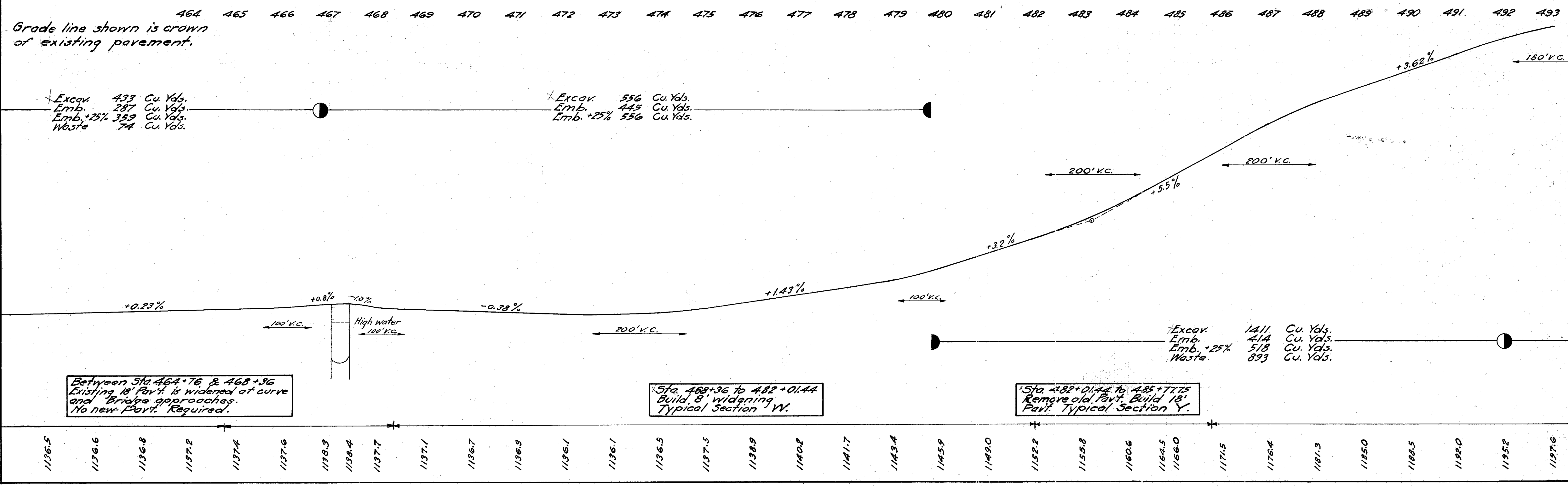
NEW CURVE
 $\Delta = 24^\circ - 41' L.$
 $D = 14^\circ - 00'$
 $T = 89.76'$
 $L = 176.31'$
 $R = 410.28'$
 $E = 9.7'$



USR 322 RE-ALIGNED IN 1955, CULVERT REMOVED

old CFN 283221192
 new CFN 1807825
 SLM 11.92, 12" VCP
 EXTENDED IN 1955
 REALIGNMENT
 PROJECT

old CFN 283221200
 new CFN 1827350
 REPLACED IN 1954
 UNDER GEA-322-11.45



Between Sta. 464+76 & 468+36 Existing 18' Pav't. is widened at curve and Bridge approaches. No new Pav't. Required.

Sta. 483+36 to 482+01.44 Build 8' widening Typical Section W.

Sta. 482+01.44 to 485+77.75 Remove old Pav't. Build 18' Pav't. Typical Section Y.

8
 Sta. 465+16
 Extend present 12" x 43" C.I.P. Culv't. 8' R.L. & 6' L. With Sta. 12" x 12" C.I.P. Culv't.

9
 Sta. 467+10.5 Existing 38" Span W.H. 20' 18" Std. Conc. Girder Bridge O.K. No work Reg'd. Deduct 40.5 Lin. Ft. for Bridge.

10
 Sta. 482+90
 Extend present 12" x 27" C.I.P. Culv't. 8' L. with Sta. 12" x 12" C.I.P. Culv't. Build two special headwalls.

