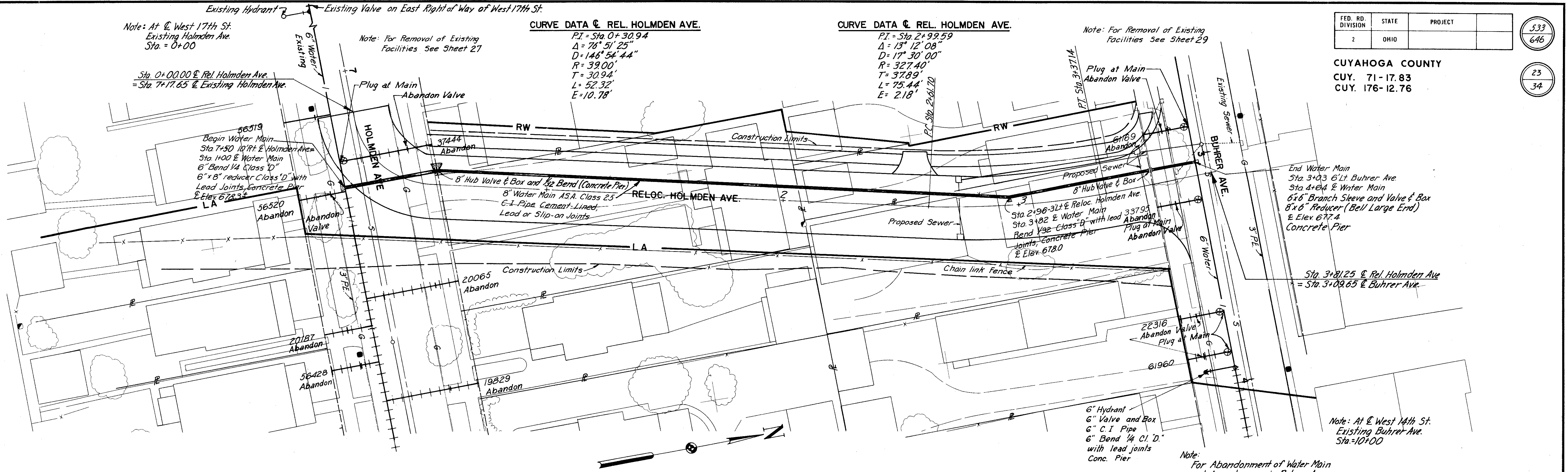


CUYAHOGA COUNTY
 CUY. 71-17.83
 CUY. 176-12.76



Note: At \odot West 17th St. Existing Holmden Ave. Sta. = 0+00
 Existing Hydrant
 Existing Valve on East Right of Way of West 17th St.

CURVE DATA \odot REL. HOLMDEN AVE.
 P.I. = Sta. 0+30.94
 $\Delta = 76^\circ 51' 25''$
 $D = 146^\circ 54' 44''$
 $R = 39.00'$
 $T = 30.94'$
 $L = 52.32'$
 $E = 10.78'$

CURVE DATA \odot REL. HOLMDEN AVE.
 P.I. = Sta. 2+92.59
 $\Delta = 13^\circ 12' 08''$
 $D = 17^\circ 30' 00''$
 $R = 327.40'$
 $T = 37.89'$
 $L = 75.44'$
 $E = 2.18'$

Note: For Removal of Existing Facilities See Sheet 29

Sta. 0+00.00 \odot Rel. Holmden Ave.
 = Sta. 7+17.65 \odot Existing Holmden Ave.

56519
 Begin Water Main
 Sta. 7+50 10' RT. \odot Holmden Ave.
 Sta. 1+00 \odot Water Main
 6" Bend 1/4 Class "D"
 6" x 8" reducer Class "D" with
 Lead Joints, Concrete Pier
 \odot Elev. 678.33

Note: For Removal of Existing Facilities See Sheet 27

Plug at Main Abandon Valve

8" Hub Valve & Box and 1/2 Bend (Concrete Pier)
 8" Water Main A.S.A. Class 25
 6'-1" Pipe Cement-Lined,
 Lead or Slip-on Joints

Plug at Main Abandon Valve
 P.I. Sta. 3+37.14

Sta. 2+96.31 \odot Reloc. Holmden Ave.
 Sta. 3+82 \odot Water Main
 Bend 1/2 Class "D" with lead
 Joints, Concrete Pier
 \odot Elev. 678.0

End Water Main
 Sta. 3+03 6" Lt. Buhrer Ave.
 Sta. 4+64 \odot Water Main
 6" x 6" Branch Sleeve and Valve & Box
 8" x 6" Reducer (Bell Large End)
 \odot Elev. 677.4
 Concrete Pier

Sta. 3+81.25 \odot Rel. Holmden Ave.
 = Sta. 3+09.65 \odot Buhrer Ave.

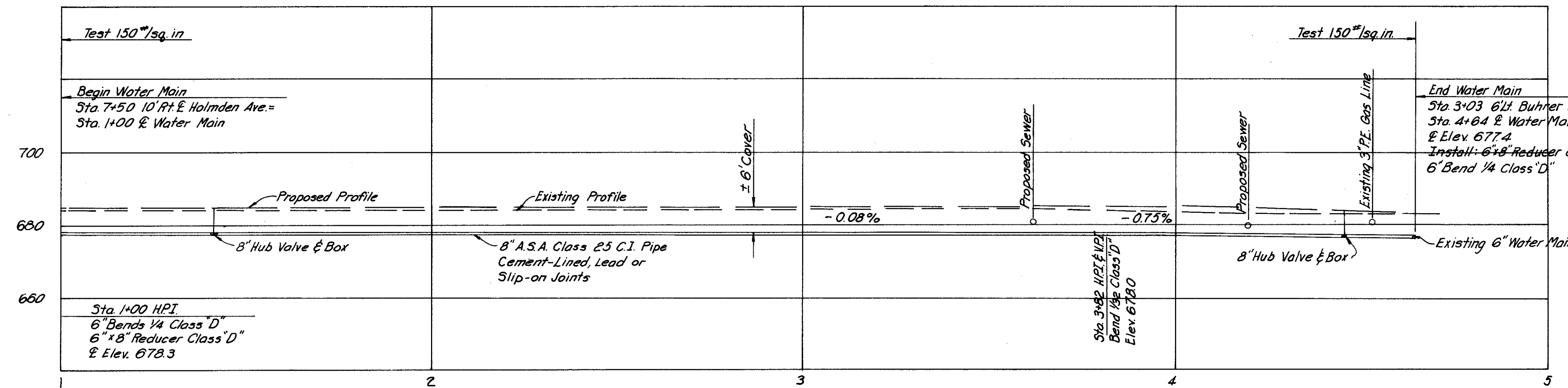
Note: At \odot West 14th St. Existing Buhrer Ave. Sta. = 10+00

Note:
 For Abandonment of Water Main and Appurtenance in Holmden Ave. See Sheet 27

Note:
 The Contractor shall notify the Utilities Engineering Office three working days prior to starting water work. Call Tower 1-4600, Line 813.
 Procedure for construction of 8" water main:
 1. Install new 8" main to points near the connections with the existing 6" water mains at Holmden Avenue and Buhrer Avenue. Install temporary C.I. plug with clamps and properly backed up for testing.
 2. Taps for chlorination to be provided after the work has begun. The Division of Water will determine the location of necessary taps.
 3. After chlorination and testing, the temporary plugs can be removed and the connections made to the new water line.

Note:
 For Abandonment of Water Main and Appurtenance in Buhrer Ave. See Sheet 29

ESTIMATED QUANTITIES		
Item	Description	Quantity
Special	8" Water Main A.S.A. Class 25, Cast Iron Pipe (Cement Lined, Lead or Slip-on Joints) and Fittings	364 Ft.
Special	8" Hub Valve and Box	2 Each
Special	Service Connection - Plug at Main	5 Each
Special	Valves Abandoned	6 Each
Special	Pipe Cuts	4 Each
Special	6" Water Main A.S.A. Cl. 25 C.I. Pipe and Fittings	12 Ft.
Special	6" Hydrant	1 Each
Special	6" Valve and Box	1 Each
Special	Test Main	1 Each
Special	6" Branch Sleeve and Valve & Box	1 Each



APPROVED
 DATE FEB. 4, 1965
 J. W. ...
 DIRECTOR OF PUBLIC UTILITIES
 COMMISSIONER OF WATER AND HEAT
 H. ...
 COMMISSIONER DIVISION OF UTILITIES ENGINEERING
 J. R. ...
 ENGINEER OF CONSTRUCTION AND SURVEYS
 M. ...
 ENGINEER OF DESIGN

LOW SERVICE DISTRICT
 DEPARTMENT OF PUBLIC UTILITIES
 DIVISION OF WATER AND HEAT
 CLEVELAND, OHIO
 SUBJECT 8" CAST IRON WATER MAIN ALONG RELOCATED HOLMDEN AVENUE FROM EXISTING HOLMDEN AVENUE TO BUHRER AVENUE

B-1957