

September 28, 2021

Mr. Kyle J. Dohlen, P.E.
Transportation Engineer
ODOT District 12
Ohio Department of Transportation
5500 Transportation Boulevard
Garfield Heights, Ohio 44125-5396
kyle.dohlen@dot.ohio.gov

Re: Report for Bridge Deck Coring
LAK-20-17.14
Task Order No.: 33583-D12-15
PID Number: 114486
Painesville , Lake County, Ohio
PSI Project Number: 0142-2420

Dear Mr. Dohlen:

Enclosed is PSI's Report for the Bridge Deck Cores obtained from the site at the above-referenced project. PSI's services for this project were performed in accordance with PSI's Proposal No. 0142-352074, dated August 23, 2021. Authorization to perform this exploration was in the form of an authorization letter to PSI acknowledged by Mr. Kyle J. Dohlen, P.E. of Ohio Department of Transportation, on August 31, 2021.

The scope of services for this project included six (6) cores at LAK-20-17.14, taking photographs of the existing bridge condition, measuring the thickness and condition of the concrete cores and taking photographs of each core.

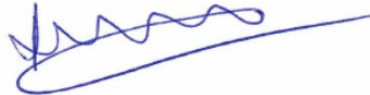
The number and locations of the cores were selected by the representatives of Ohio Department of Transportation. Enclosed with this report are Project Location Plan and concrete Core Photo Logs.

PSI assumes no responsibility for interpretation made by others. The cores will be retained for a period of 30 days after the date of this report and disposed thereof. PSI appreciates the opportunity to have been of service to you on this project. Please do not hesitate to contact us if you have any questions.

Respectfully submitted,
PROFESSIONAL SERVICE INDUSTRIES, INC.

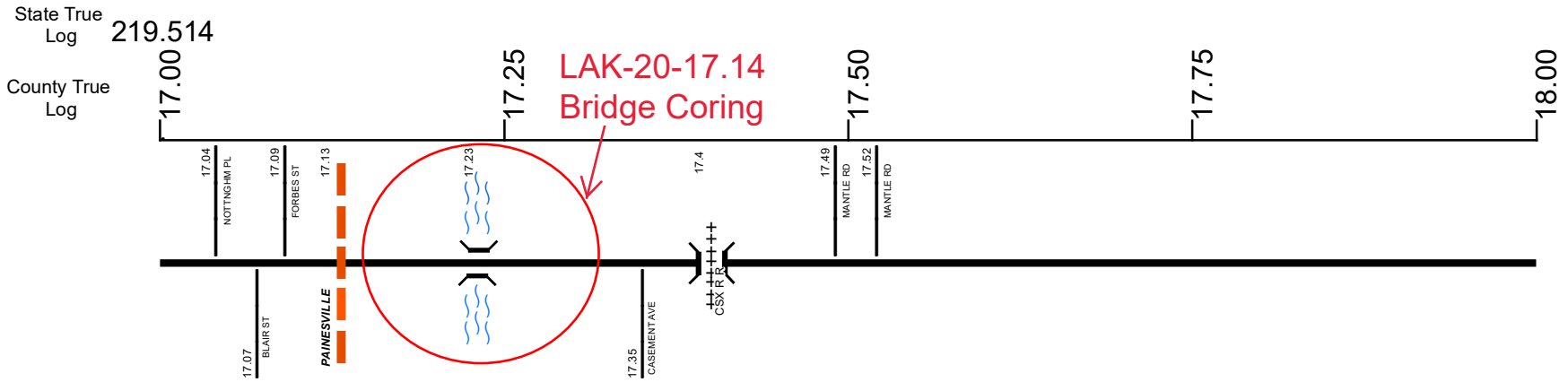


Zaineddin Obeid
Project Manager



A. Veeramani, P.E.
Director/Principal Consultant

Core Site Location



Surface Type & Width (Left / Right)

G (30'/5')	G 28'	D 28'	D 38'	G 38'	G 40'	G (22'/21')
15.78 - 17.17	17.17 - 17.24	17.24 - 17.31	17.32 - 17.4	17.4 - 17.6		17.6 - 18.6

Base Type (Left / Right)

T / N
15.78 - 17.17

Base Type (Left / Right)

P	T / P
17.32 - 17.6	17.6 - 19.34

Shoulder Type & Width (Left / Right)

	7 (0'/0')
	0 - 19.59

Median Type and Width

	1 (0')
	0 - 19.59

Through Lanes

2	4
14.25 - 17.4	17.4 - 18.76

Street Name

W ERIE ST	E ERIE ST	CASEMENT AVE	N RIDGE RD
15.78 - 17.17	17.17 - 17.35	17.35 - 17.49	17.49 - 30.41

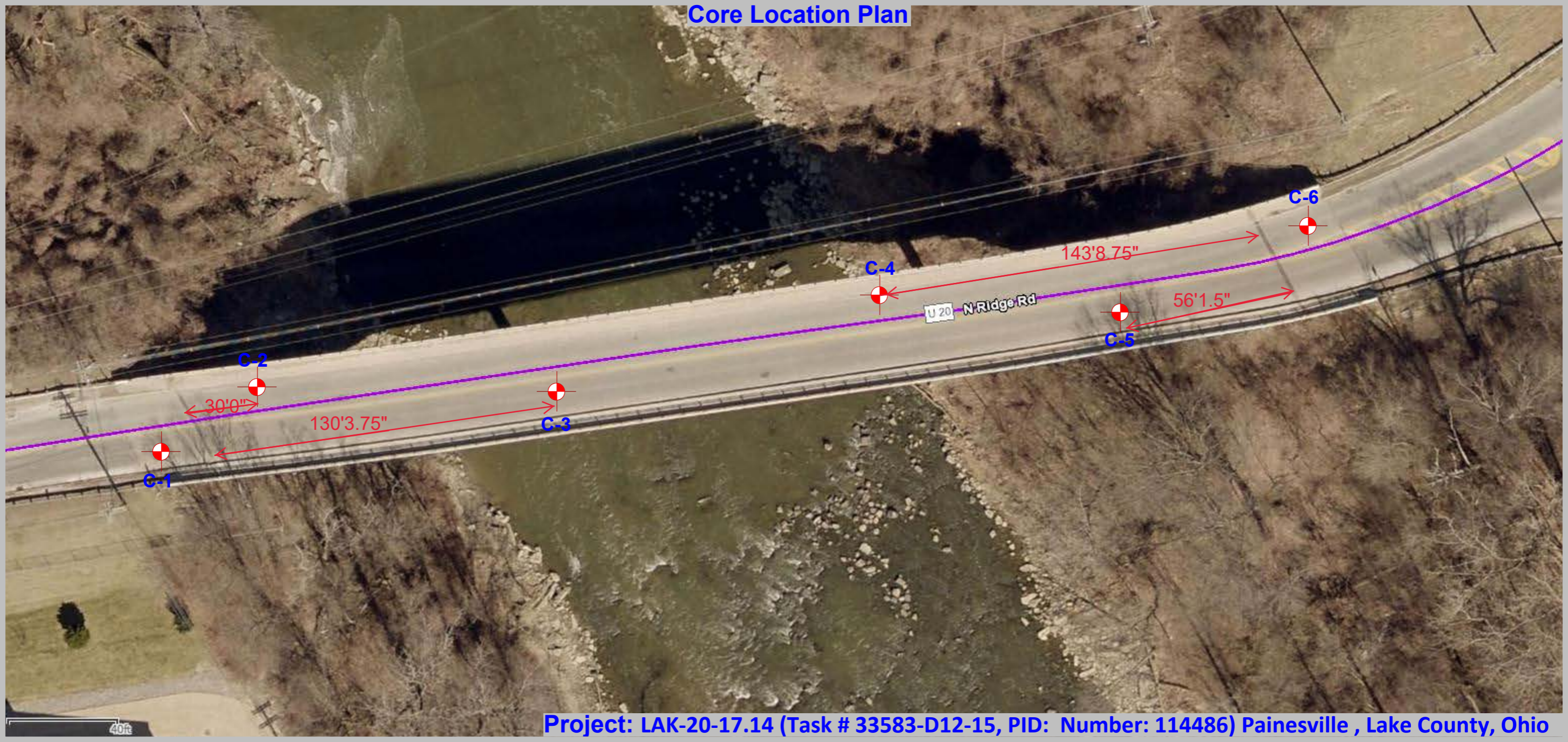
- Non-divided Highway
- Divided Highway
- Secondary Segment
- Corporation
- Bridge (on route)
- Underpass
- Overpass
- Railroad (at grade)
- Railroad (underpass)
- Railroad (overpass)
- Intersection
- Direction of Survey → E

Data as of 01/2020
Created on: 7/27/2021

transportation.ohio.gov

Prepared by
The Ohio Department of Transportation
Office of Technical Services
Roadway Information

Core Location Plan





Location: LAK-20-17.14

Concrete Thickness: 12 inches

Lat/Long: 41.737250, -81.230533

(Good Condition – Broken in place)

Pavement Photo





Location: LAK-20-17.14

Concrete Thickness: 10 inches

Lat/Long: 41.737311, -81.230410

(Good Condition – Broken in place)

Pavement Photo





Location: LAK-20-17.14

Concrete Thickness: 12.5 inches

Lat/Long: 41.737301, -81.230046

(Good Condition – Broken in place)

Pavement Photo





Location: LAK-20-17.14

Concrete Thickness: 10 inches

Lat/Long: 41.737408, -81.229609

(Good Condition – Broken in place)

Pavement Photo





Location: LAK-20-17.14

Concrete Thickness: 11 inches

Lat/Long: 41.737393, -81.229261

(Fair Condition – Broken in place)

Pavement Photo





Location: LAK-20-17.14

Concrete Thickness: 12 inches

Lat/Long: 41.737480, -81.229044

(Good Condition – Broken in place)

Pavement Photo

