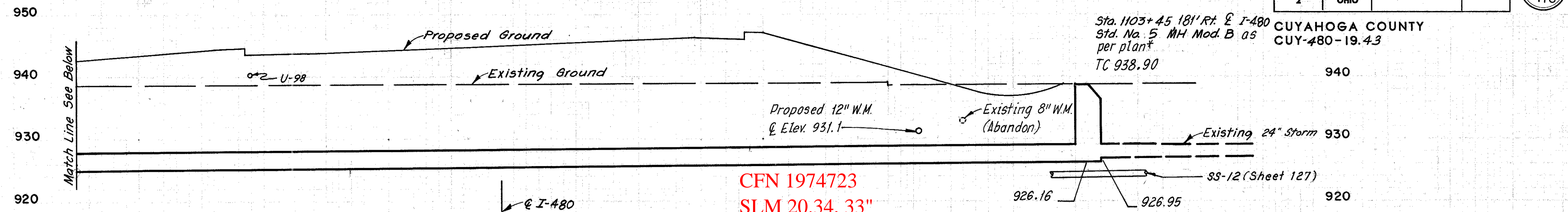


FED. RD. DIVISION	STATE	PROJECT
2	OHIO	

CUYAHOGA COUNTY
CUY-480-19.43

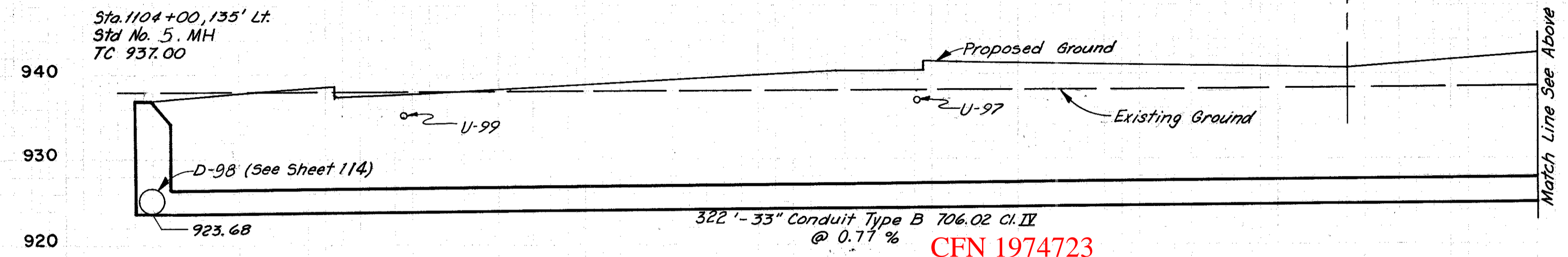
Sta. 1103+45 181' Rt. @ I-480
Std. No. 5 MH Mod. B as
per plan*
TC 938.90



CFN 1974723
SLM 20.34, 33"
SEE SHEET 92

* See Detail Sheet 258.

Sta. 1104+00, 135' Lt.
Std. No. 5. MH
TC 937.00



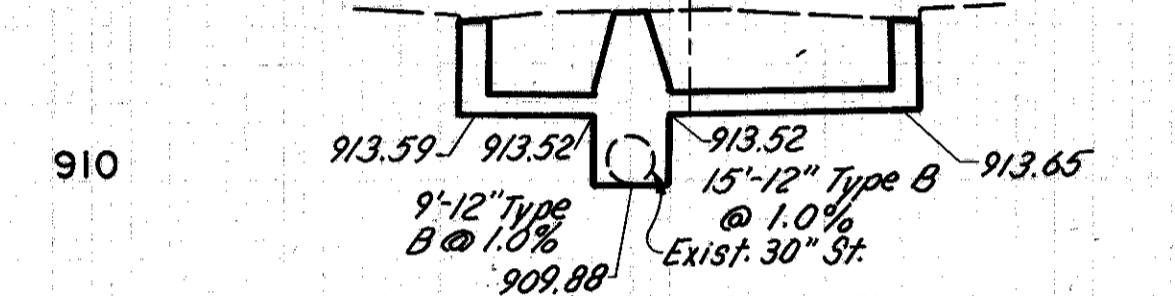
D-97
I

CFN 1974723
SLM 20.34, 33"
SEE SHEET 92

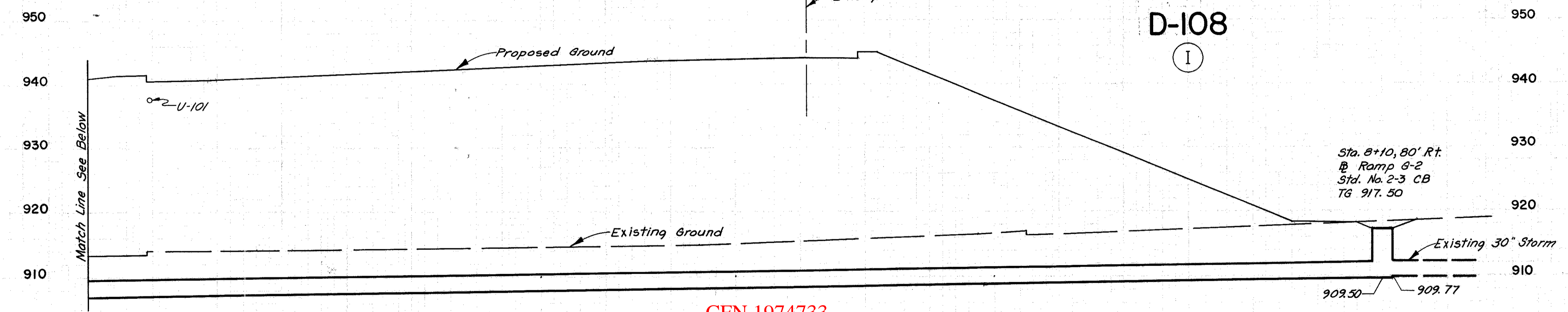
Sta. 8+08, 89' Rt.
@ Ramp G-2
Std. No. 1 MH
TC 918.8

Sta. 8+18, 86.5' Rt.
@ Ramp G-2
Std. No. 6 CB
NG 918.4

Sta. 7+93, 86.5' Rt.
@ Ramp G-2
Std. No. 6 CB
NG 918.4

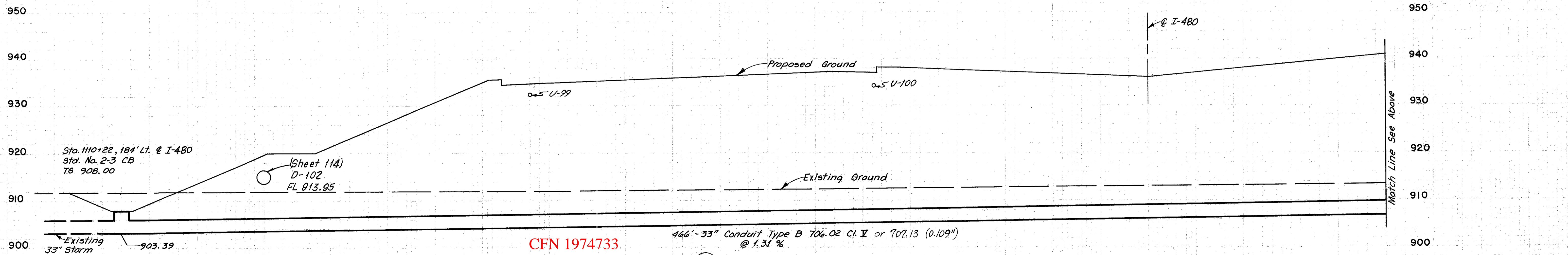


D-108
I



D-107

CFN 1974733
SLM 20.43, 33"
SEE SHEET 92



D-102
I

CFN 1974733
SLM 20.43, 33"
SEE SHEET 92

HOWARD, NEEDLES, TAMMEN & BERGENDOFF
CONSULTING ENGINEERS
KANSAS CITY CLEVELAND NEW YORK

Made Checked
 E.R.A.
 3-4-71
 3-10-71