

MICROFILMED
JAN 17 1991

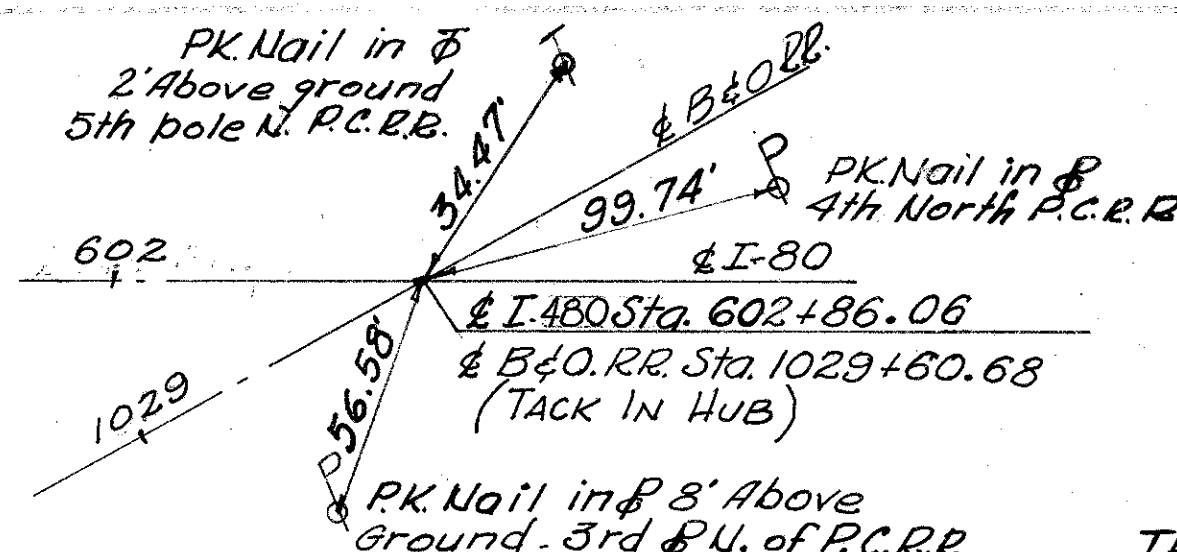
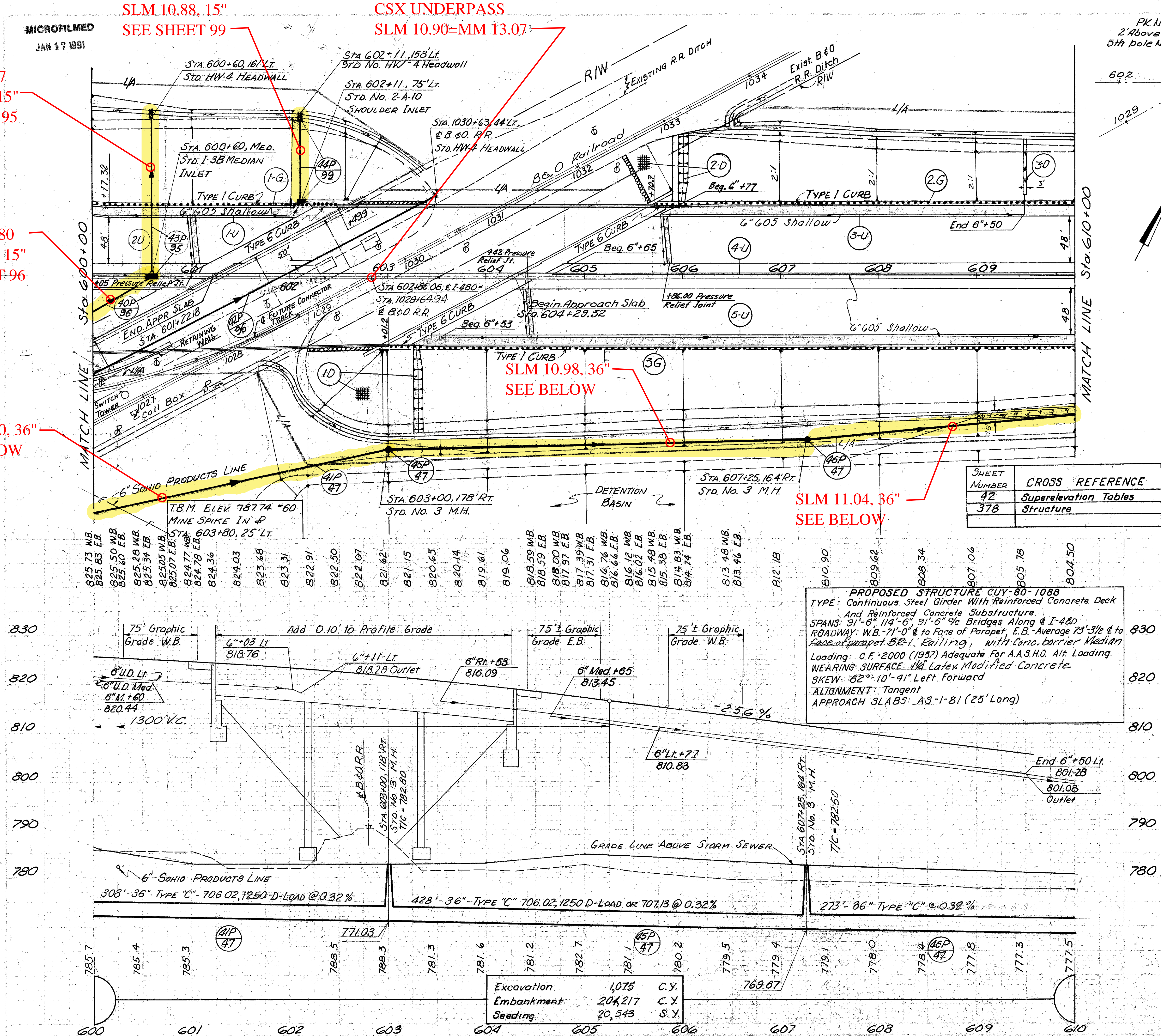
SLM 10.88, 15"
SEE SHEET 99

CSX UNDERPASS
SLM 10.90=MM 13.07

CFN 1974287
SLM 10.86, 15"
SEE SHEET 95

CFN 1974280
SLM 10.86, 15"
SEE SHEET 96

SLM 10.90, 36"
SEE BELOW



TREE REMOVAL
600+00 to 610+00
SIZE 18" No 0

CALC. BY WAM DATE 3/75
CHKD. BY EJK DATE 3/75

CUYAHOGA COUNTY
CUY-480-10.39

47
500

SHEET NUMBER	CROSS REFERENCE
42	Superelevation Tables
378	Structure

PROPOSED STRUCTURE CUY-80-1088
 TYPE: Continuous Steel Girder With Reinforced Concrete Deck
 And Reinforced Concrete Substructure.
 SPANS: 91'-6", 114'-6", 91'-6" 3/4 Bridges Along & I-80
 ROADWAY: W.B.-71'-0" & to Face of Parapet, E.B.-Average 73'-3 1/2" & to
 Face of parapet. 32-1. Railing, with Conc. barrier Median
 Loading: C.F.-2000 (1957) Adequate For A.A.S.H.O. Alt. Loading.
 WEARING SURFACE: 1 1/4" Latex Modified Concrete
 SKEW: 82°-10'-41" Left Forward
 ALIGNMENT: Tangent
 APPROACH SLABS: AS-1-81 (25' Long)

ROADWAY	ITEM	UNIT	QTY	EST. QTY	
606	Bridge Terminal Assembly Type A	Ea.	1	1	
	Guard Rail Type 5	L.F.	2326	4323	
	Sodding	S.Y.	83	6588	
	SEEDING AND EXCELSIOR MATTING	S.Y.	98 913	71 280	
	REINFORCED SODDING	S.Y.	71 18		
	SHALLOW UNDERDRAIN 707.01 TYPE III OR 707.21 TYPE III	L.F.	2 202 52	2 390 52	
	Shallow	L.F.	60	648 52	
	Bends & Branches	Ea.	2	1	
	STD. No. I-38 MEDIAN INLET Mod. AS PER PLAN	Ea.	1	1	
	Std. No. 3 M.H.	Ea.	1	2	
604	Std. No. 2-A-10 Shoulder Inlet	Ea.	1	1	
	Std. No. I-38 Median Inlet	Ea.	1	1	
	603	Type "C"	L.F.	273	308 273
		Type "C" 706.02 1250 D-LOAD	L.F.	308	
		Type "C" 706.02 2,000 D-LOAD	L.F.	396	
		Type "C" 706.02 1250 D-LOAD or 707.13	L.F.	428	
		Type "F" 707.05	L.F.	101	86
		Type "B"	L.F.	68	155
		Type "F"	L.F.	20	10
		Concrete Masonry	CY	0.69	10
Rock Chan'l. Protect. Type "B" w/ Filter		CY	289 025	15 5 025	
601		41P Rt	Lt.	603+00 to 603+00	
	42P Rt.	Lt.	602+44 to 603+50		
	43P Med.	Lt.	600+60		
	44P Lt.	Lt.	602+11		
	45P Rt.	Lt.	603+00 to 607+25		
	46P Rt.	Lt.	607+25 to 607+60		
	40P Rt.	Lt.	599+29 to 600+60		
	10 Rt.	Lt.	603+30		
	20 Lt.	Lt.	605+95		
	30 Lt.	Lt.	605+50		
602	1U Lt.	Lt.	600+00 to 602+11		
	2U Med.	Lt.	600+00 to 602+60		
	3U Lt.	Lt.	605+77 to 605+50		
	4U Med.	Lt.	604+25 to 610+00		
	5U Rt.	Lt.	603+53 to 610+00		
	1G	Lt.	600+00 to 602+499		
	2G	Lt.	605+70 to 610+00		
	3G	Lt.	608+01 to 610+00		
	TOTAL		444 119 40	223 187 428 396 308 273	

600+00 610+00