

6-1

MICROFILMED
JAN 17 1991

SLM 12.49, 42"
SEE BELOW

CFN 1974302
SLM 12.60, 27"
SEE SHEET 101

CFN 1974298
SLM 12.60, 27"
SEE SHEET 101

SLM 12.60, 15"
SEE SHEET 101

SLM 12.60, 15"
SEE SHEET 101

SLM 12.60, 27"
SEE BELOW

IDLEWOOD
SLM 12.72=MM 14.89

I-480 @ CURVE DATA
 $\Delta = 13^{\circ}19'26''$
 $D = 1^{\circ}00'$
 $R = 5,729.58'$
 $T = 669.21'$
 $L = 1,332.39'$
 $C = 1,329.39'$

CFN 1974364
SLM 12.74, 18"
SEE SHEET 149

CUYAHOGA COUNTY
CUY-480-10.39

56
500

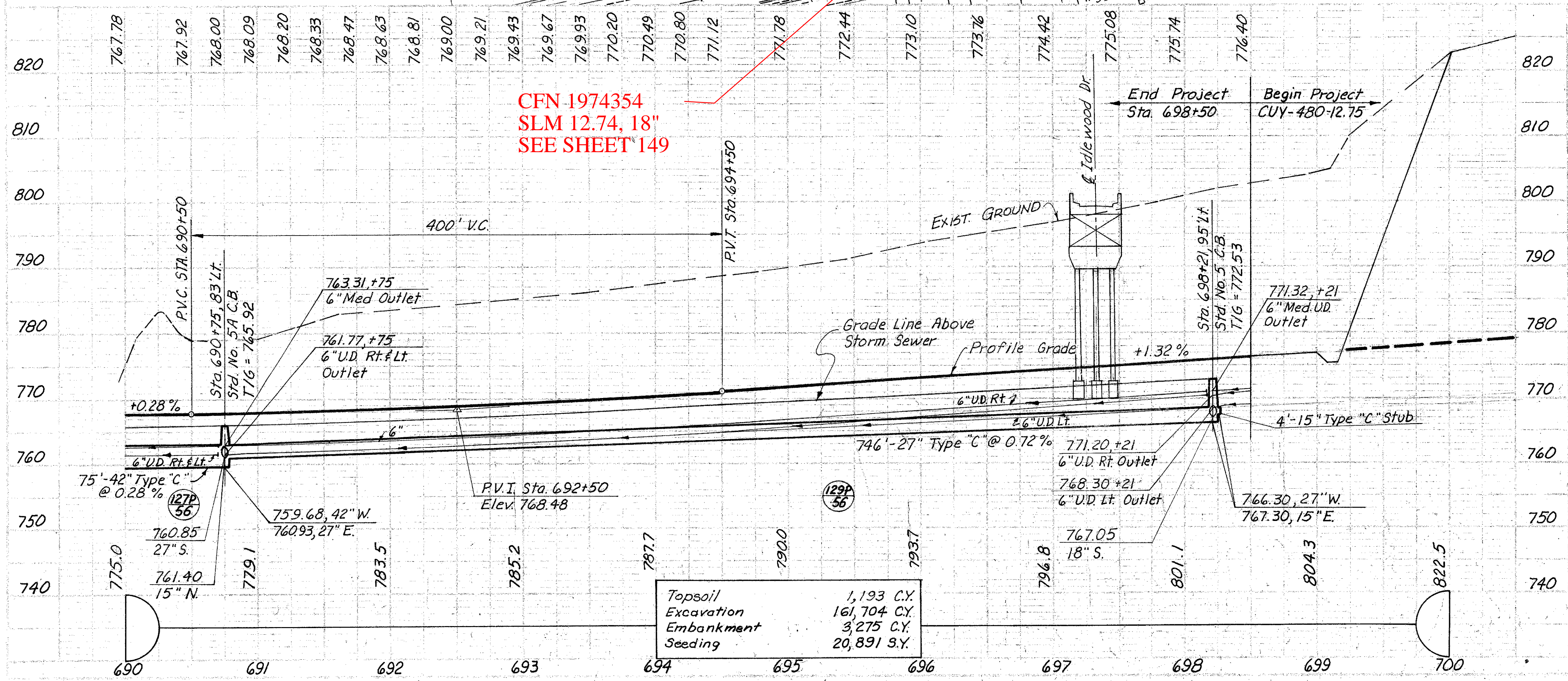
PROPOSED STRUCTURE
 TYPE: CONTINUOUS STEEL GIRDERS WITH REINFORCED CONCRETE DECK AND SUBSTRUCTURE.
 SPANS: 136'-0" & 123'-0" c/c BRG'S.
 ROADWAY: 26'-0" F/F CURBS 5'-0" SIDEWALKS & 6'-0" CHAINLINK FENCE MOUNTED ON 27" CONCRETE PARAPET.
 LOADING: HS 20-44 @ THE ALTERNATE MILITARY LOADING, FATIGUE CASE II.
 WEARING SURFACE: MONOLITHIC CONCRETE.
 SKEW: 0°-00'-00"
 ALIGNMENT: TANGENT
 APPROACH SLABS: AS-1-72(MOD) 25'-0" LONG

CALC. BY B.B. DATE 1/81
CHKD. BY W.A.M. DATE 1/81

TREE REMOVAL
 690+00 TO 700+50
 SIZE No.
 18" 35
 30" 12

ROADWAY	Drainage	Structure	Material	Quantity	Unit	Notes
606		Anchorage Assembly Type T				
606		Guard Rail Type 5		12.5	1	
602		Structure Remove	L.S.			
660		Sodding	SY	125	125	Lump
605		Deep	6" L.F.		842	
605		Shallow	6" L.F.		813	844
604		Std. No. I-3B Median Inlet	Ea.	1	1	
604		Std. No. 2-2B C.B.	Ea.	1	1	
604		Std. No. 5A C.B.	Ea.	1	1	
604		Std. No. 5 C.B.	Ea.	1	1	
603		Type "F"	L.F.	65	67	
603		Type "F"	L.F.		20	20
603		Type "C"	L.F.	75	75	
603		Type "C"	L.F.	746	746	
603		Type "C"	L.F.		7	4
603		Type "B"	L.F.	166	166	
603		Type "B"	L.F.		95	93
		Total		188	166	11

SHEET NUMBER	CROSS REFERENCE
77 & 78	IDLEWOOD DR.
94	RAMP R-1 PAVEMENT DETAILS
94	RAMP R-2 PAVEMENT DETAILS
462	STRUCTURE
41	SUPERELEVATIONS TABLES



CFN 1974354
SLM 12.74, 18"
SEE SHEET 149

Topsail	1,193 C.Y.
Excavation	161,704 C.Y.
Embankment	3,275 C.Y.
Seeding	20,891 S.Y.