

DESCRIPTION: PLOTTED BY: DATE: 11/13/83
 TITLE: MARTHA ROAD
 DRAWN BY: J. J. GIBSON
 CHECKED BY: J. J. GIBSON
 SCALE: AS SHOWN
 SHEET NO. 287 OF 287
 PROJECT NO. CUY-71-10.44

SLM 10.89, 42"
 SEE SHEET 301

SLM 11.00, 42"
 SEE SHEET 302

SLM 11.04, 42"
 SEE SHEET 302

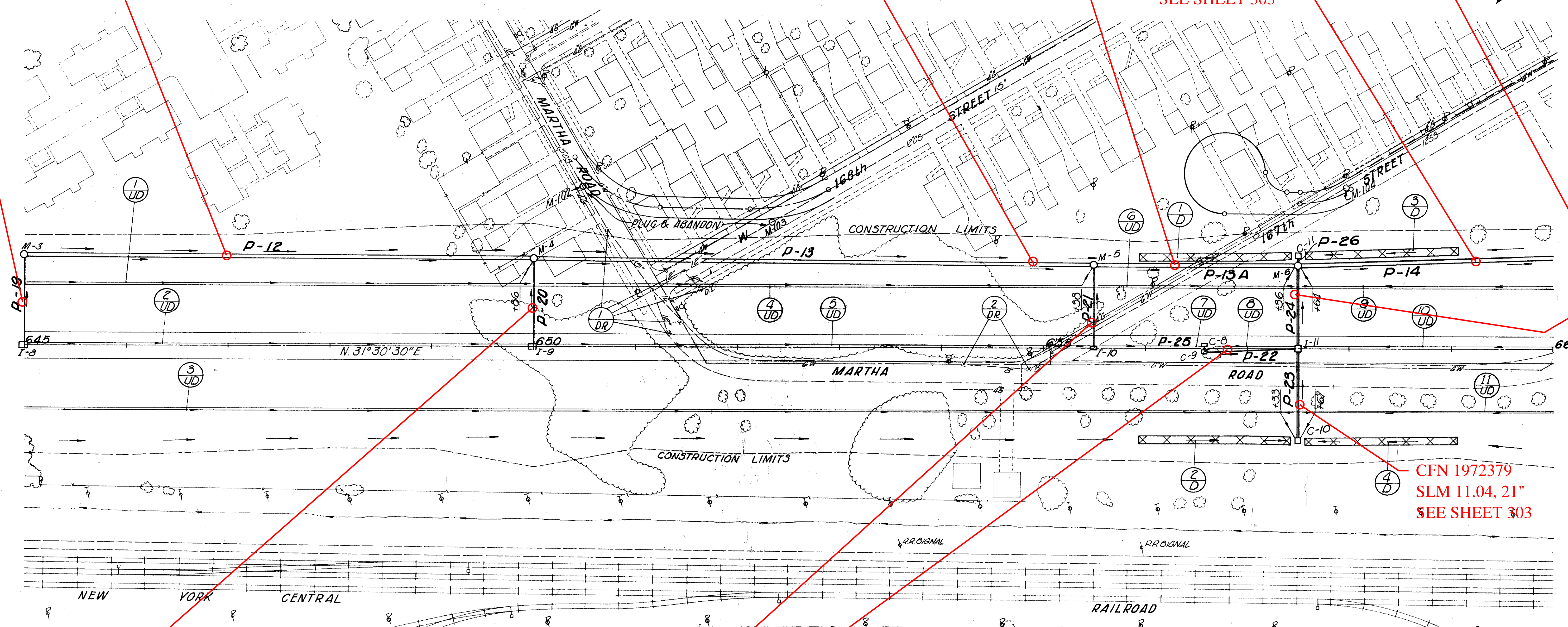
CFN 1972380
 SLM 11.04, 21"
 SEE SHEET 303
 SLM 11.12, 48"
 SEE SHEET 303

CFN 1972377
 SLM 10.80, 15"
 SEE SHEET 302

CFN 1972379
 SLM 11.04, 21"
 SEE SHEET 303

CFN 1972382
 SLM 10.89, 15"
 SEE SHEET 302

CFN 1972388
 SLM 11.00, 15"
 SEE SHEET 302
 CFN 1972375
 SLM 11.04, 15"
 SEE SHEET 303



NOTE:
 FOR DRAINAGE PROFILES
 SEE SHEET NO. 301 & 303.

REF.	STATION TO STATION	SIDE	L-120	T-16	1-16	1-16
			JUTE MATTING	M.H. ABAND.	C.B. ABAND.	INLETS ABAND.
			SQ.YD.	EA.	EA.	EA.
1-D	655+93 to 657+43	LT.	125			
2-D	655+93 to 657+43	RT.	125			
3-D	657+57 to 659+07	LT.	125			
4-D	657+57 to 659+07	RT.	125			
1-DR	650+70 to 657+65	LT.		3	2	1
2-DR	654+20 to 654+85	RT.		2		
TOTALS			500	5	2	1

REF.	STATION TO STATION	SIDE	I-1			I-5
			C.I.F-4	6" Class	I-3	
			6"	SHALLOW	DEEP	60" BEND WVE EACH
			LIN. FT.			
1-UD	645+04 to 650+00	LT.	10	520		
2-UD	645+04 to 650+00	E.	10	486		
3-UD	645+00 to 657+50	RT.	10	504	766	
4-UD	650+04 to 655+50	LT.	10		548	1
5-UD	650+04 to 655+50	E.	10	536		
6-UD	655+04 to 657+50	LT.	10		210	1
7-UD	655+04 to 656+58	E.	10	94		
8-UD	656+62 to 657+50	E.	10	78		
9-UD	657+50 to 660+00	LT.	10	264		1
10-UD	657+50 to 660+00	E.	10	240		
11-UD	657+50 to 660+00	RT.	10	270		1
SUB-TOTAL				2932	1324	1 5
TOTALS			110	4516		6