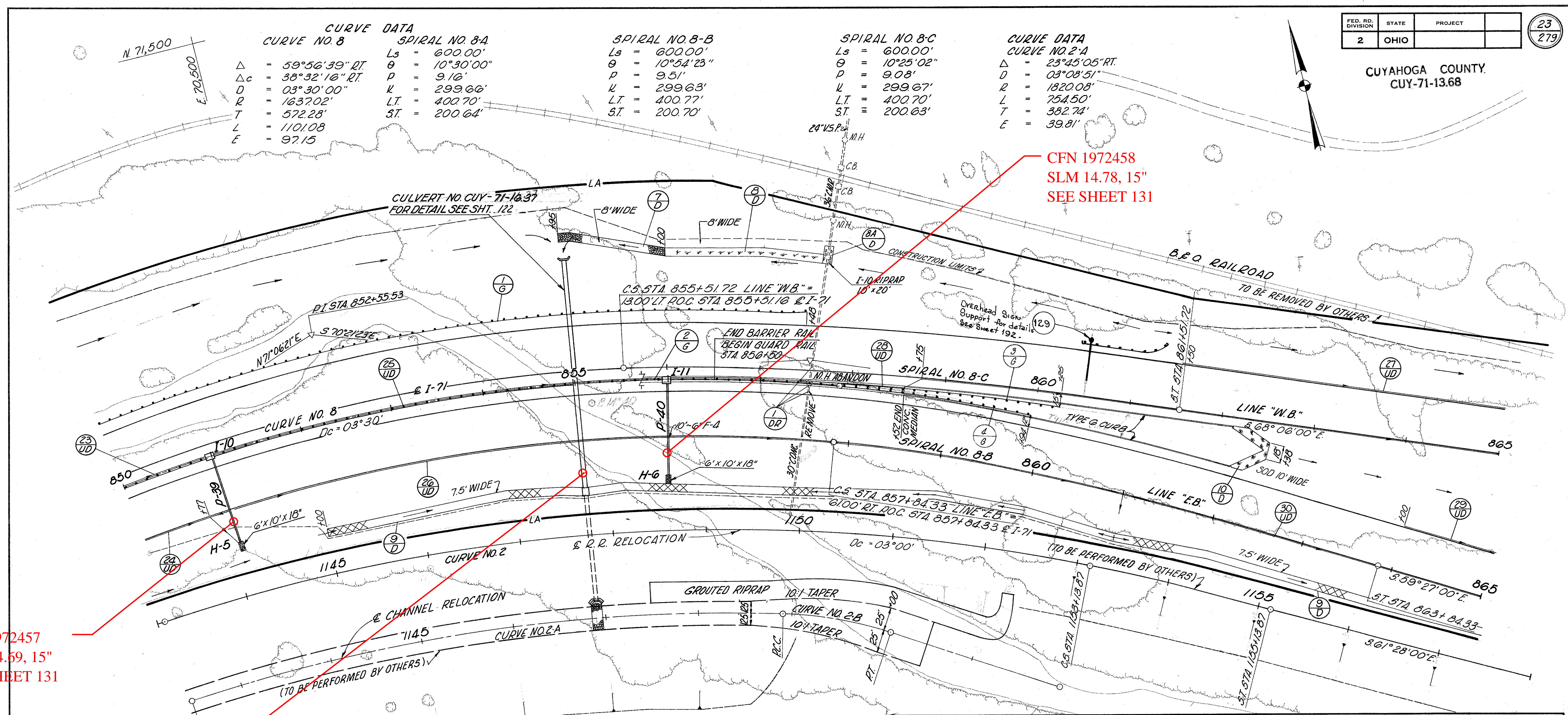


CUYAHOGA COUNTY
CUY-71-13.68

CURVE DATA		SPIRAL NO. 8-A		SPIRAL NO. 8-B		SPIRAL NO. 8-C		CURVE DATA	
CURVE NO. 8		SPIRAL NO. 8-A		SPIRAL NO. 8-B		SPIRAL NO. 8-C		CURVE NO. 2-A	
Δ	= 59°56'39" RT	Ls	= 600.00'	Ls	= 600.00'	Ls	= 600.00'	Δ	= 23°45'05" RT
Δc	= 38°32'16" RT	θ	= 10°30'00"	θ	= 10°54'23"	θ	= 10°25'02"	D	= 03°08'51"
R	= 03°30'00"	P	= 9.16'	P	= 9.51'	P	= 9.08'	R	= 1820.08'
D	= 1637.02'	K	= 299.66'	K	= 299.63'	K	= 299.67'	L	= 754.50'
T	= 572.28'	LT	= 400.70'	LT	= 400.77'	LT	= 400.70'	T	= 382.74'
L	= 1101.08'	ST	= 200.64'	ST	= 200.70'	ST	= 200.63'	E	= 39.81'
E	= 97.15'								



CFN 1972458
SLM 14.78, 15"
SEE SHEET 131

CFN 1972457
SLM 14.59, 15"
SEE SHEET 131

old CFN 180711478
new CFN 1864315
SLM 14.78, 48"
SEE SHEET 122

REF. NO.	STATION TO STATION	SIDE	E-12 PIPE REMOVED OVER 15"	I-16 M.H. ABANDONED	I-10 RIPRAP USING 6" REINFORCED CONCSLAB
1DR	857+52	℄	245	1	
84D		LT.			22
	TOTAL		245	1	22

REF. NO.	STATION TO STATION	SIDE	ESTIMATED QUANTITIES										
			I-1		I-5			I-10 DUMPED ROCK CHANNEL PROT.	L-10 SODDING	L-120 JUTE MATTING	I-15 GUARD RAIL STEEL BEAM TYPE	GUARD RAIL STEEL BEAM BARRIER TYPE (REQD)	
			CLASS I-3	CLASS F-4	6" CLASS I-3								
			6" LIN.FT.	6" LIN.FT.	8" LIN.FT.	60° WYE EACH	90° BEND EACH	30° BEND EACH	C.V.	S.V.	S.V.	LIN.FT.	
23UD	850+00 ~ 851+00	℄	90	10									
24UD	850+00 ~ 851+00	RT.	116	10	10	1							
25UD	851+04 ~ 856+00	℄	436	10									
26UD	851+04 ~ 861+00	RT.	1001	10									
27UD	861+50 ~ 865+00	LT.	350										
28UD	856+04 ~ 865+00	℄	396					2					
29UD	864+00 ~ 865+00	RT.	100										
30UD	861+04 ~ 865+00	RT.	396										
1G	850+00 ~ 857+48	LT.										772.5	
2G	850+00 ~ 860+25	LT&RT										725.0	6500
7D	854+95 ~ 856+00	LT.							54				
8D	856+00 ~ 857+00	LT.								152		1045	
9D	852+00 ~ 860+00	RT.								89			
10D	862+00 ~ 860+38	℄											
SUB TOTAL						1	1	2	54	241	1045	1497.5	6500
TOTAL			3435	30	20		4						

STA 850+00 (℄ I-71) TO STA 865+00 (LINE "EB") (LINE "WB")