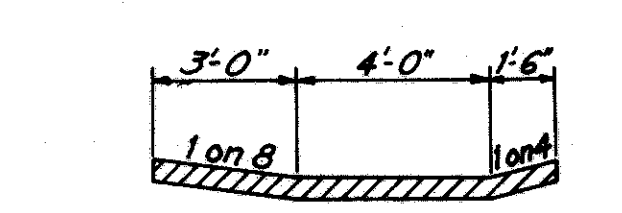
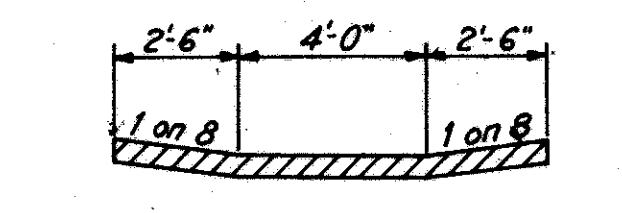
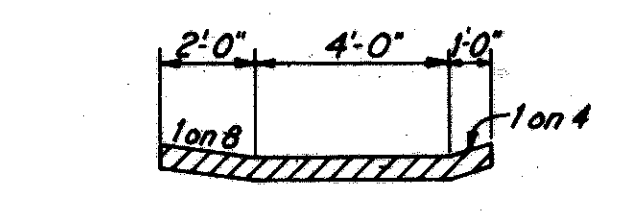
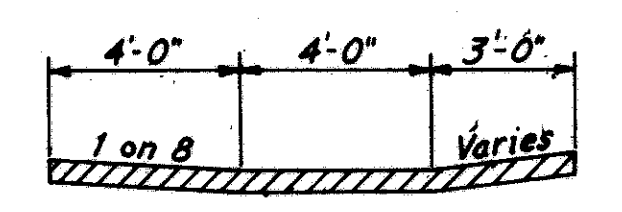
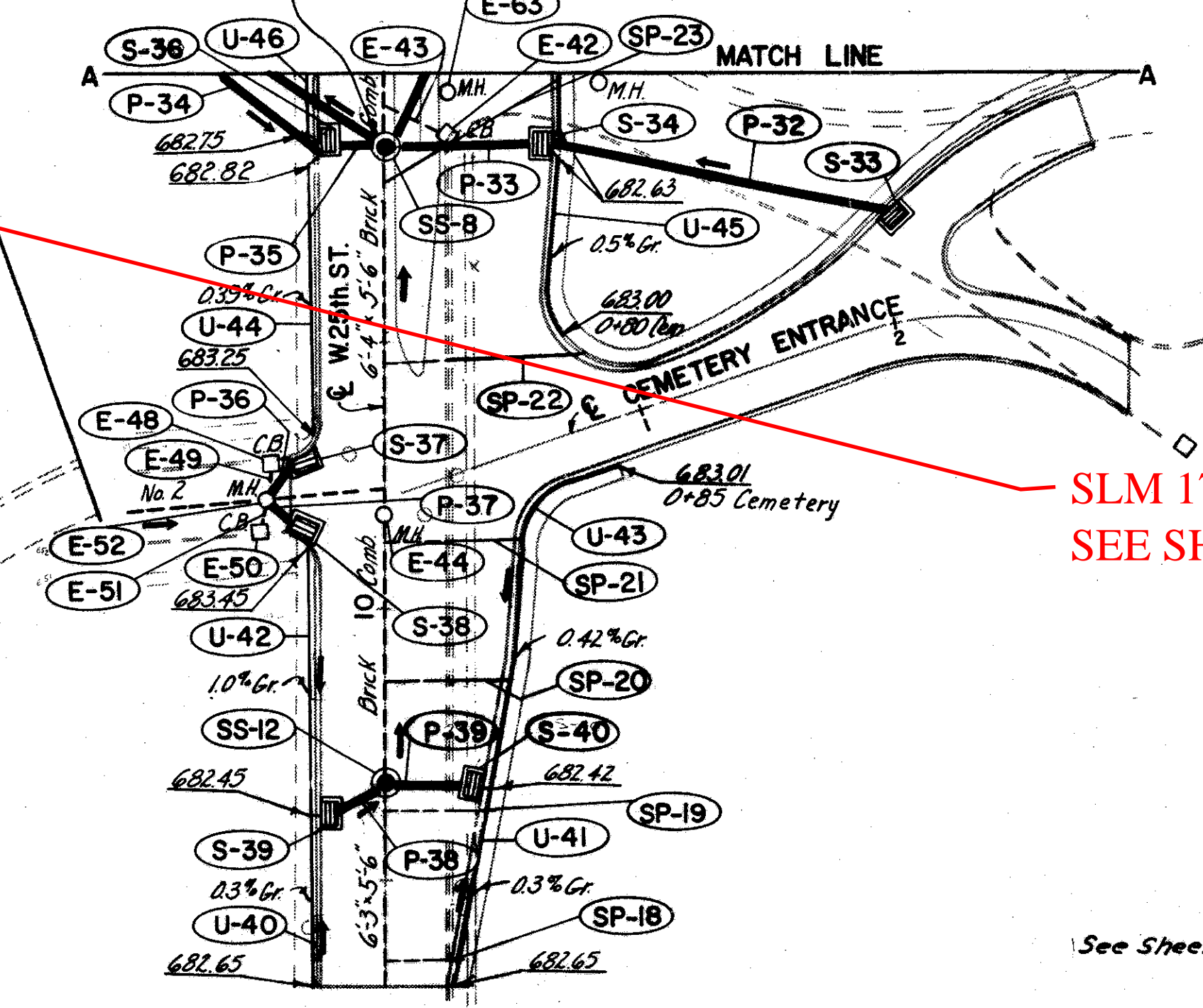
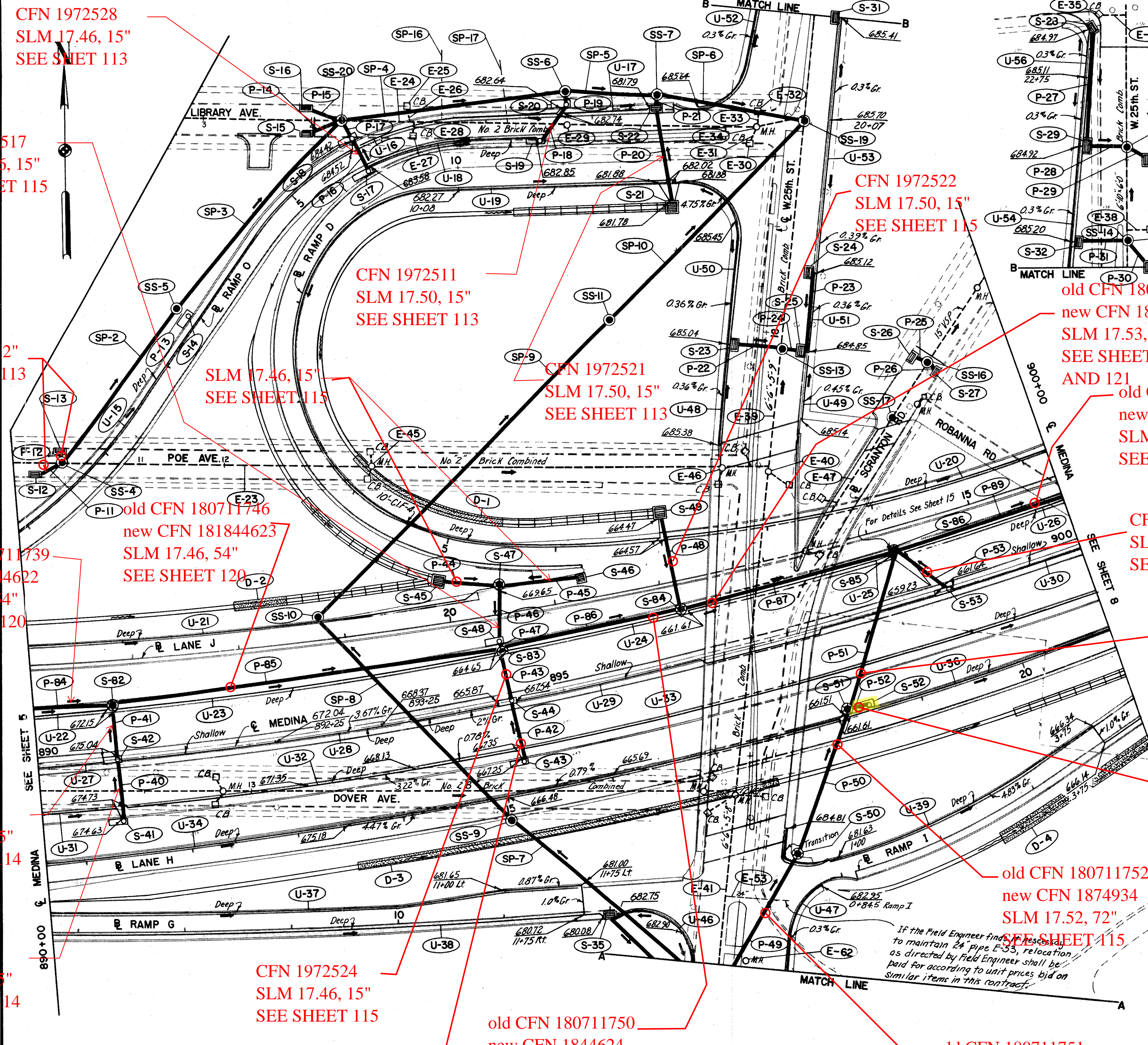


M.H. ADJUSTED TO GRADE		
Ref. No.	Existing T/C Elev.	Adjusted T/C Elev.
E-44	687.33	687.15
E-52	687.55	687.19
E-42	686.1 ±	686.55
E-43	686.1 ±	686.50



- DRAINAGE LEGEND**
- PROPOSED STORM SEWER MANHOLE
 - PROPOSED SANITARY MANHOLE
 - PROPOSED PAVED SHOULDER INLET
 - PROPOSED DITCH CATCH BASIN
 - PROPOSED PAVEMENT CATCH BASIN
 - PROPOSED STORM OR SANITARY SEWER
 - EXISTING MANHOLE
 - EXISTING CATCH BASIN
 - EXISTING STORM OR SANITARY SEWER
 - JUTE MATTING
 - SODDED DITCH



CFN 1972528
SLM 17.46, 15"
SEE SHEET 113

CFN 1972517
SLM 17.45, 15"
SEE SHEET 115

SLM 17.39, 12"
SEE SHEET 113

SLM 17.46, 15"
SEE SHEET 115

CFN 1972511
SLM 17.50, 15"
SEE SHEET 113

CFN 1972521
SLM 17.50, 15"
SEE SHEET 113

old CFN 180711739
new CFN 181844623
SLM 17.46, 54"
SEE SHEET 120

old CFN 180711739
new CFN 1844622
SLM 17.39, 54"
SEE SHEET 120

CFN 1972520
SLM 17.39, 15"
SEE SHEET 114

CFN 1972519
SLM 17.39, 15"
SEE SHEET 114

CFN 1972524
SLM 17.46, 15"
SEE SHEET 115

CFN 1972525
SLM 17.46, 15"
SEE SHEET 114

CFN 1972522
SLM 17.50, 15"
SEE SHEET 115

old CFN 180711733
new CFN 1844621
SLM 17.53, 60"
SEE SHEET 120
AND 121

old CFN 180711758
new CFN 18749385
SLM 17.58, 84"
SEE SHEET 121

CFN 1972513
SLM 17.54, 15"
SEE SHEET 115

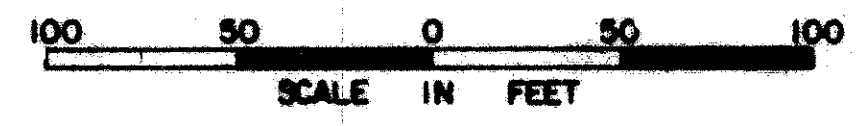
old CFN 180711753
new CFN 1830659
SLM 17.53, 72"
SEE SHEET 115

old CFN 180711752
new CFN 1874934
SLM 17.52, 72"
SEE SHEET 115

SLM 17.52, 12"
SEE SHEET 115

old CFN 180711751
new CFN 1874933
SLM 17.51, 72"
SEE SHEET 115

SCALE: HORIZONTAL DATE 1-10-65
VERTICAL DATE 2-12-65
HOWARD, NEEDLES, TAMMEN & BERGENOFF
CONSULTING ENGINEERS
KANSAS CITY CLEVELAND NEW YORK



If the Field Engineer finds it necessary to maintain 24" pipe E-55, relocation as directed by Field Engineer shall be paid for according to unit prices bid on similar items in this contract.

See Sheet 7 For Quantities.