

CFN 1971608
SLM 25.20, 18"
SEE BELOW

old CFN 180902527
new CFN 1882627
SLM 25.27, 96"x5'-4"
CONCRETE BOX
SEE SHEET 172A

PEDESTRIAN BRIDGE
SLM 25.33 = MM 181.14

CFN 1971638
SLM 25.32, 15"

CFN 1971605
SLM 25.32, 15"

CFN 1971620
SLM 25.38, 12"

CFN 1971634
SLM 25.43, 18"

DIVISION	STATE	PROJECT	FISCAL YEAR
2	OHIO	1-329 (20)	1965

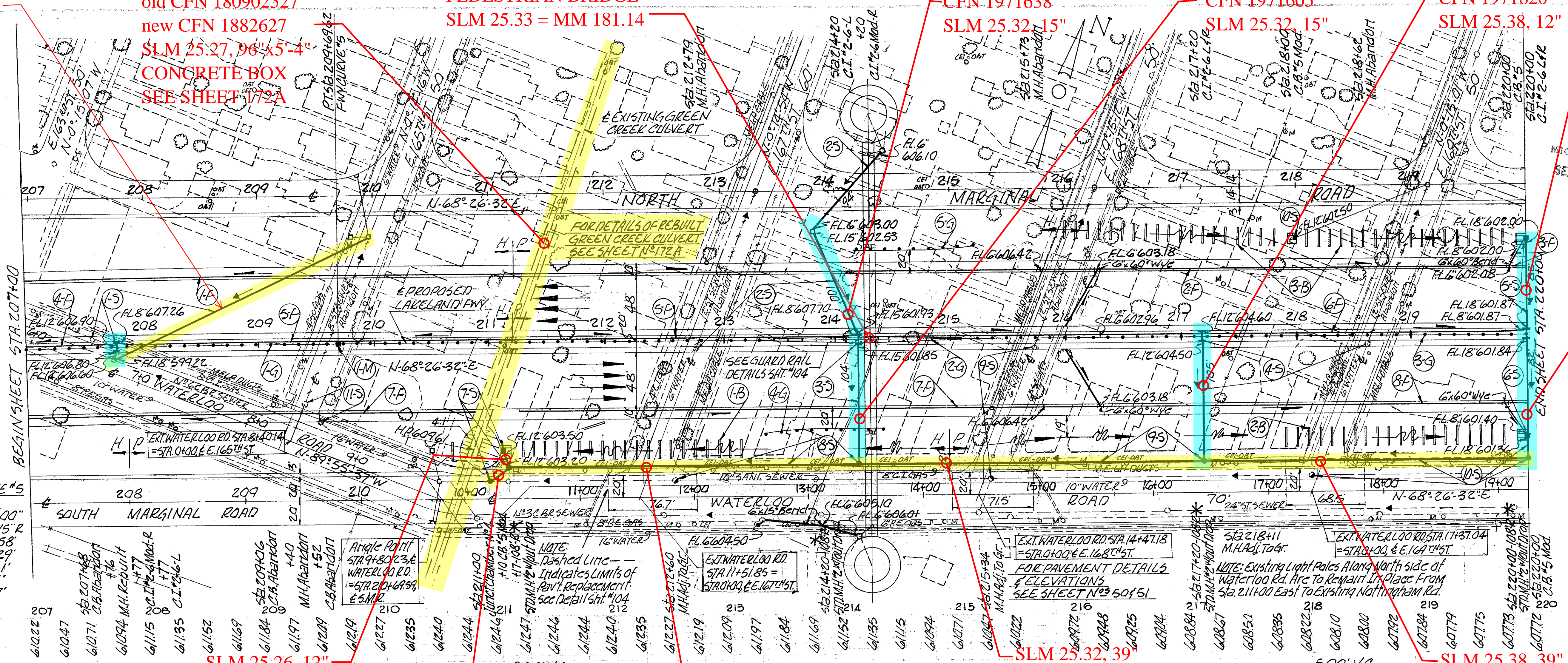
CUYAHOGA COUNTY
CUY - 2 - 24.33

CFN 1971602
SLM 25.43, 18"

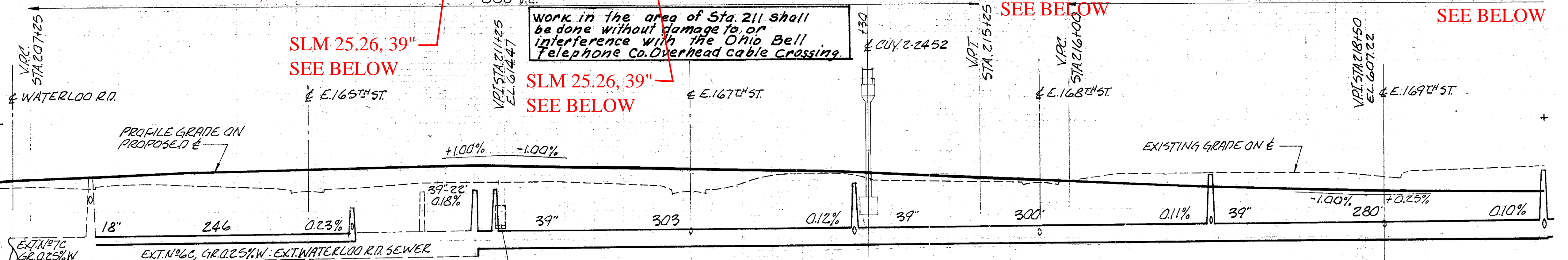
STATION	FROM	TO	I-15 LIN. FT.		TOTAL
			FROM	TO	
1-5	207+00	207+37.90	1	1	1
2-6	213+37.90	215+25.40	1	1	1
3-7	215+25.40	220+00	1	1	1
4-8	213+38.50	214+41.50	1	1	1
5-9	214+18.50	215+21.50	1	1	1
TOTAL			5	5	5

STATION	FROM	TO	I-15 LIN. FT.		TOTAL
			FROM	TO	
1-5	207+00	207+37.90	1	1	1
2-6	213+37.90	215+25.40	1	1	1
3-7	215+25.40	220+00	1	1	1
4-8	213+38.50	214+41.50	1	1	1
5-9	214+18.50	215+21.50	1	1	1
TOTAL			5	5	5

* See General Note No. 54 on Sheet 15



FWY CURVE #5
E DATA
D=0°28'00"
Δ=5°39'15"
R=12277.58'
T=606.29'
L=1211.11'
E=14.97'



Work in the area of Sta. 211 shall be done without damage to or interference with the Ohio Bell Telephone Co. Overhead cable crossing.

I-B MONUMENT ASSEMBLY			
ITEM NO.	STATION	SIDE R OR L	TYPE "B"
I-M	209+69.62	€	I
TOTAL			I

STA. 210+00 TO STA. 220+00				
EXCAVATION	15,893 CU. YDS.			
EMBANKMENT	5,432 CU. YDS.			
EMBANKMENT +22%	6,627 CU. YDS.			

L-10 SR. YDS.				
ITEM NO.	STATION	SIDE R OR L	LENGTH X WIDTH	SODDING
1-B	210+66	213+20	R 16' x 1.5'	54
2-B	217+90	219+80	R 16' x 1.5'	53
3-B	216+00	219+83	L 16' x 1.5'	99
TOTAL				206

GUARD RAIL					
ITEM NO.	STATION		SIDE R OR L	I-15 LIN. FT.	
	FROM	TO		BARRIER DESIGN	STANDARD DESIGN
1-G	207+00	213+37.90	€	637.90	
2-G	213+37.90	215+25.40	€		375.00
3-G	215+25.40	220+00	€	474.60	
4-G	213+38.50	214+41.50	R		103.00
5-G	214+18.50	215+21.50	L		103.00
TOTAL				1112.50	581.00

- SEE THE 1975 CUY-90-21.27 FOR SEWER AND DRAINAGE STRUCTURE UPGRADE.

SEE THE 1975 CUY-90-21.27 PLANS FOR THE MEDIAN CONCRETE BARRIER INSTALL