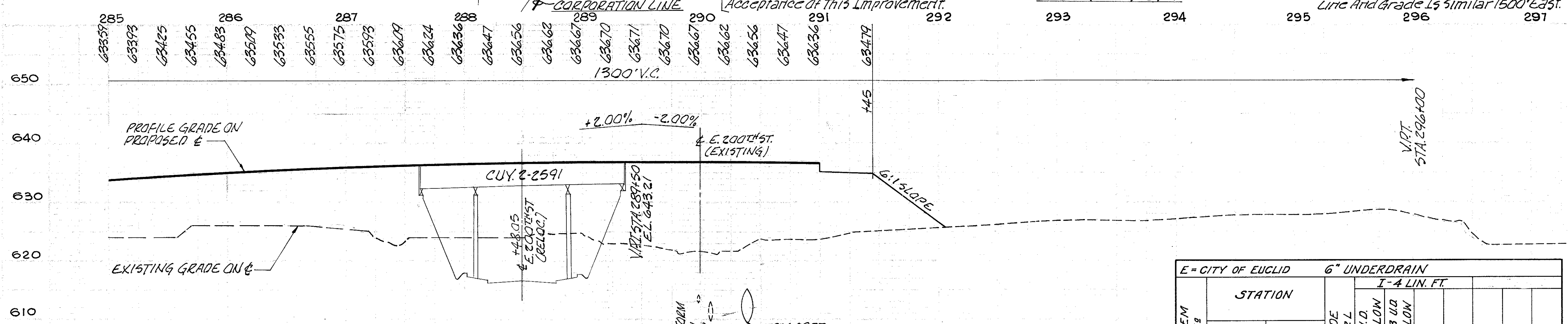
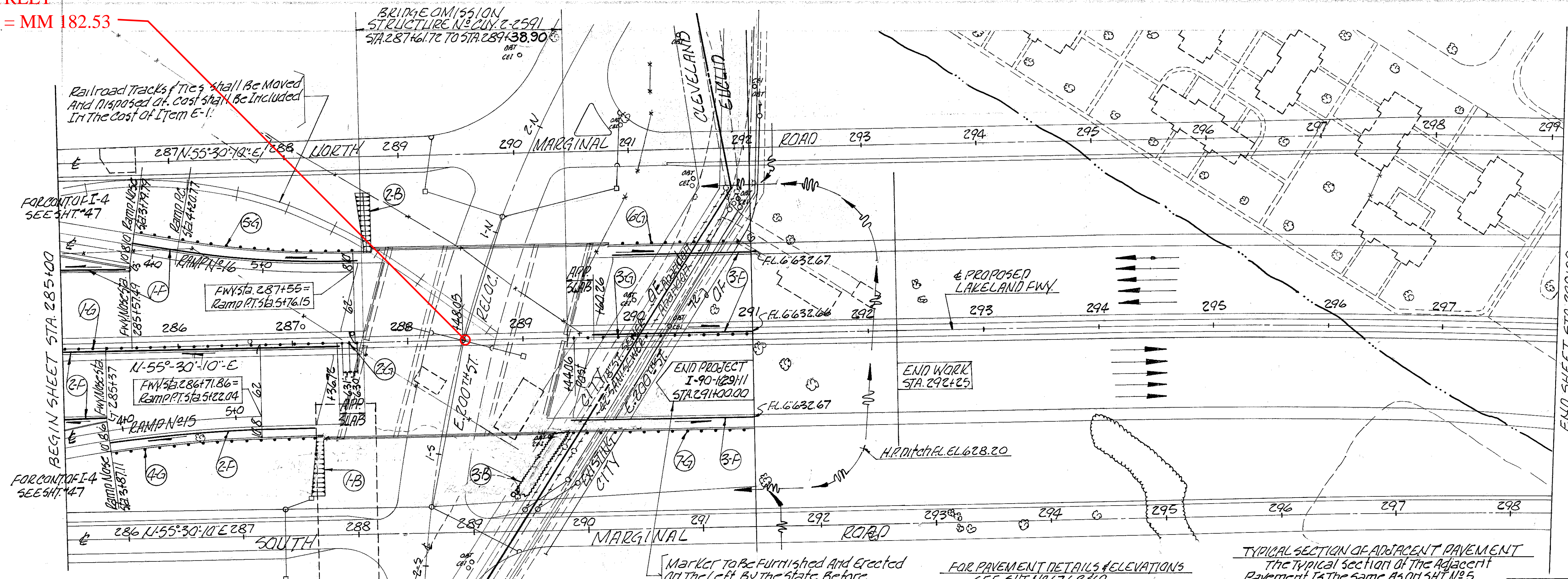


E. 200th STREET
SLM 26.72 = MM 182.53

FED. RD. DIVISION	STATE	PROJECT	FISCAL YEAR
2	OHIO	1-329 (2)	1958

CUYAHOGA COUNTY
CUY-2-2433

MICROFILMED
SEP 10 1965



STA. 280+00 TO STA. 287+00 CITY OF CLEVELAND INTERSTATE FUNDS	
EXCAVATION	2,141 CU. YDS.
EMBANKMENT	38,000 CU. YDS.
EMBANKMENT + 22%	46,360 CU. YDS.

STA. 280+00 TO STA. 287+00 CITY OF CLEVELAND FEDERAL URBAN FUNDS	
EXCAVATION	6,381 CU. YDS.
EMBANKMENT	2,915 CU. YDS.
EMBANKMENT + 22%	3,556 CU. YDS.

STA. 289+00 TO STA. 292+25 CITY OF EUCLID	
EXCAVATION	6,021 CU. YDS.
EMBANKMENT	14,200 CU. YDS.
EMBANKMENT + 22%	17,324 CU. YDS.

ITEM NO.		STATION		SIDE R OR L	6" UNDERDRAIN	
FROM	TO	SHALLOW	DEEP			
1-F	285+00	287+57	L	196	50	
2-F	285+00	287+40	L	456		
3-F	289+43	291+00	L/R	1230		
TOTAL CLEVELAND				774	50	
TOTAL EUCLID				300		

ITEM NO.		STATION		SIDE R OR L	STORM SEWER			LOCATION OF STRUCTURE
FROM	TO	I-2 LIN. FT.	I-5 EACH		8" x 34" BEND	8" x 80" BEND	8" x 90" ELBOW	
1-S	287+12	287+25	R					
2-S	288+93	289+30	R					
TOTAL CLEVELAND								

ITEM NO.		LOCATION		SIDE R OR L	LENGTH X WIDTH	SODDING	SODDING FOR SPECIAL BERM AND SLOPE PROTECTION
FROM	TO	FROM	TO				
1-B		S.W. ABUTMENT		R	VARIABLES		55
2-B		N.W. ABUTMENT		L	VARIABLES		55
3-B		288+95	289+30	R	61' x 10'	68	
CITY OF CLEVELAND TOTAL						68	110

ITEM NO.		STATION		SIDE R OR L	I-15 LIN. FT. STEEL BEAM TYPE (DEEP) STD. DWG. NO. 2-A BARRIER DESIGN		STANDARD DESIGN
FROM	TO	FROM	TO				
1-G	285+00	287+43.95	287+43.95	Q	243+95		
2-G	287+43.95	287+61.72	287+61.72	Q	17.77		
3-G	289+35.26	290+94.06	290+94.06	Q	63.52	95.28 E	
4-G	285+37 Fwy 3+811 Ramp 15	287+26.52	287+26.52	R		190.59	
5-G	285+57.49 Fwy 3+797 Ramp 16	287+73.51	287+73.51	L		214.87	
6-G	289+74.10	291+00	291+00	L		78.90 47.00 E	
7-G	289+27.11	291+00	291+00	R		20.89 152.00 E	
CITY OF CLEVELAND TOTAL					325.24	503.25	
CITY OF EUCLID (E) TOTAL					98.28 E	199.00 E	

ITEM NO.		STATION		SIDE R OR L	GUARD RAIL		STANDARD DESIGN
FROM	TO	FROM	TO				
1-G	259+08.69	259+29.60	259+29.60	Q		20.91	
2-G	259+29.60	267+92.10	267+92.10	Q		862.50	
3-G	267+92.10	268+09.09	268+09.09	Q		16.99	
4-G	270+53.81	272+00	272+00	Q		146.19	
5-G	259+00	263+00 Fwy 3+47.86 Ramp	263+00	R		397.86	
6-G	259+56.30	262+10 Fwy 2+50.77 Ramp	262+10	L		254.47	
7-G	264+00	268+16.99	268+16.99	R		416.39	
8-G	263+15	267+71.18	267+71.18	L		456.18	
9-G	270+38.56	272+00	272+00	L		161.44	
10-G	270+90.87	272+00	272+00	R		109.13	
CITY OF CLEVELAND					1046.59	1736.07	
TOTAL SHEET NO. 32							
GUARD RAIL TOTALS		BARRIER DESIGN		STANDARD DESIGN			
CITY OF CLEVELAND		1371.83		2301.32			
CITY OF EUCLID		98.28		199.00			

SEE THE 1975 CUY-90-21.27
PLANS FOR THE MEDIAN
CONCRETE BARRIER INSTALL