

E. 200th STREET  
SLM 26.72 = MM 182.53

FED. RD. DIVISION	STATE	PROJECT	FISCAL YEAR
2	OHIO	I-329(13)	26

CUYAHOGA COUNTY  
CUY. 2-25.96  
**CFN 1971560**  
**SLM XX, 18"**  
**SEE BELOW**

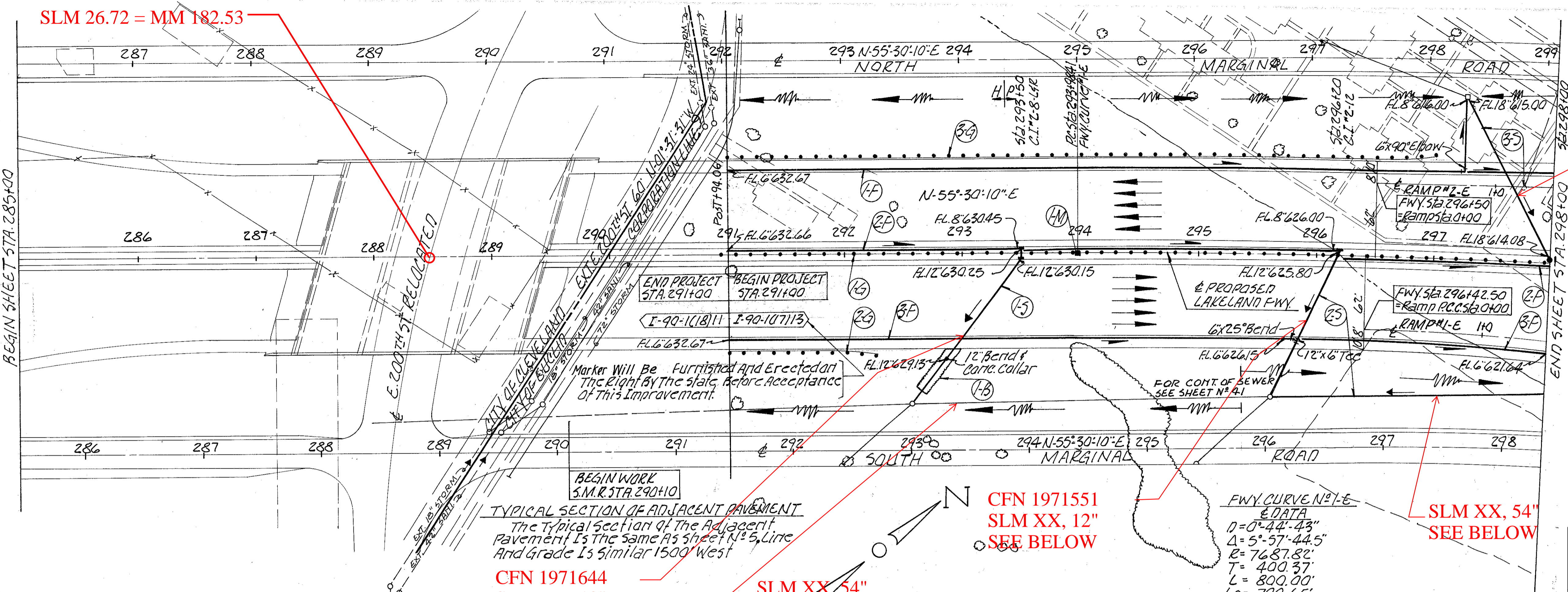
**NOTE:**  
For Construction Limit Lines See Right of Way Dwg. #145 Thru #152

**NOTE:**  
Plan And Profile of Ramp And Marginal Roads Parallel To Mainline Have Their Earthwork Quantities Included With Respective Mainline Earthwork Quantities.

**EXISTING MONUMENT NOTE:**  
Whenever Possible, The Existing Monument's Are Not To Be Disturbed.

**FOR PAVEMENT DETAILS & ELEVATIONS SEE SHEET NOS 58, 59, 60**

**B.M.-C.M. 1311-ELEV. 632.425**  
Approx. 32 ft. S. of C.L. of St. Clair Ave. and 33 ft. E. of C.L. of E. 200th St. 53.50 ft. of Mar. Box at C.L. Int. 75.75 ft. E. of N&V Int. pole #518485 on S.W. Cor.



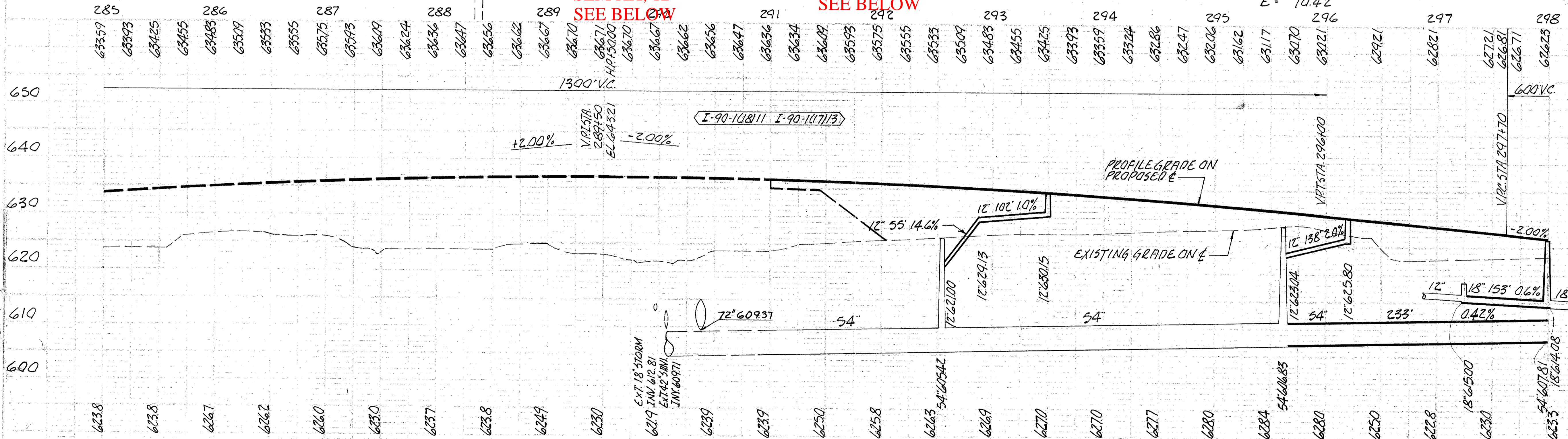
**TYPICAL SECTION OF ADJACENT PAVEMENT**  
The Typical Section of The Adjacent Pavement Is The Same As sheet N 5, Line And Grade Is Similar 1500' West

**CFN 1971644**  
**SLM XX, 12"**  
**SEE BELOW**

**SLM XX, 54"**  
**SEE BELOW**

**CFN 1971551**  
**SLM XX, 12"**  
**SEE BELOW**

**SLM XX, 54"**  
**SEE BELOW**



STA. 291+00 TO STA. 300+00

EXCAVATION	19,596 CU. YDS.
EMBANKMENT	27,881 CU. YDS.
EMBANKMENT + 22 %	34,015 CU. YDS.

**I-B MONUMENT ASSEMBLY**

ITEM No	STATION	SIDE	TYPE
I-M	293+98.41	R	EACH
TOTAL			1

**L-10 SQ. YDS.**

ITEM No	STATION	SIDE	LENGTH X WIDTH	SODDING
I-B	292+60	R	44' X 10'	49
TOTAL				49

STATION	TO	GUARD RAIL		STORM SEWER		UNDERDRAIN		TOTAL	LOCATION OF STRUCTURE
		NO	ITEM	NO	ITEM	NO	ITEM		
291+00	298+00	6	1	1	1	1	1	293+50	
292+00	297+00	6	1	1	1	1	1	296+20	
293+00	298+00	6	1	1	1	1	1	298+00	
TOTAL		18	3	3	3	3	3		