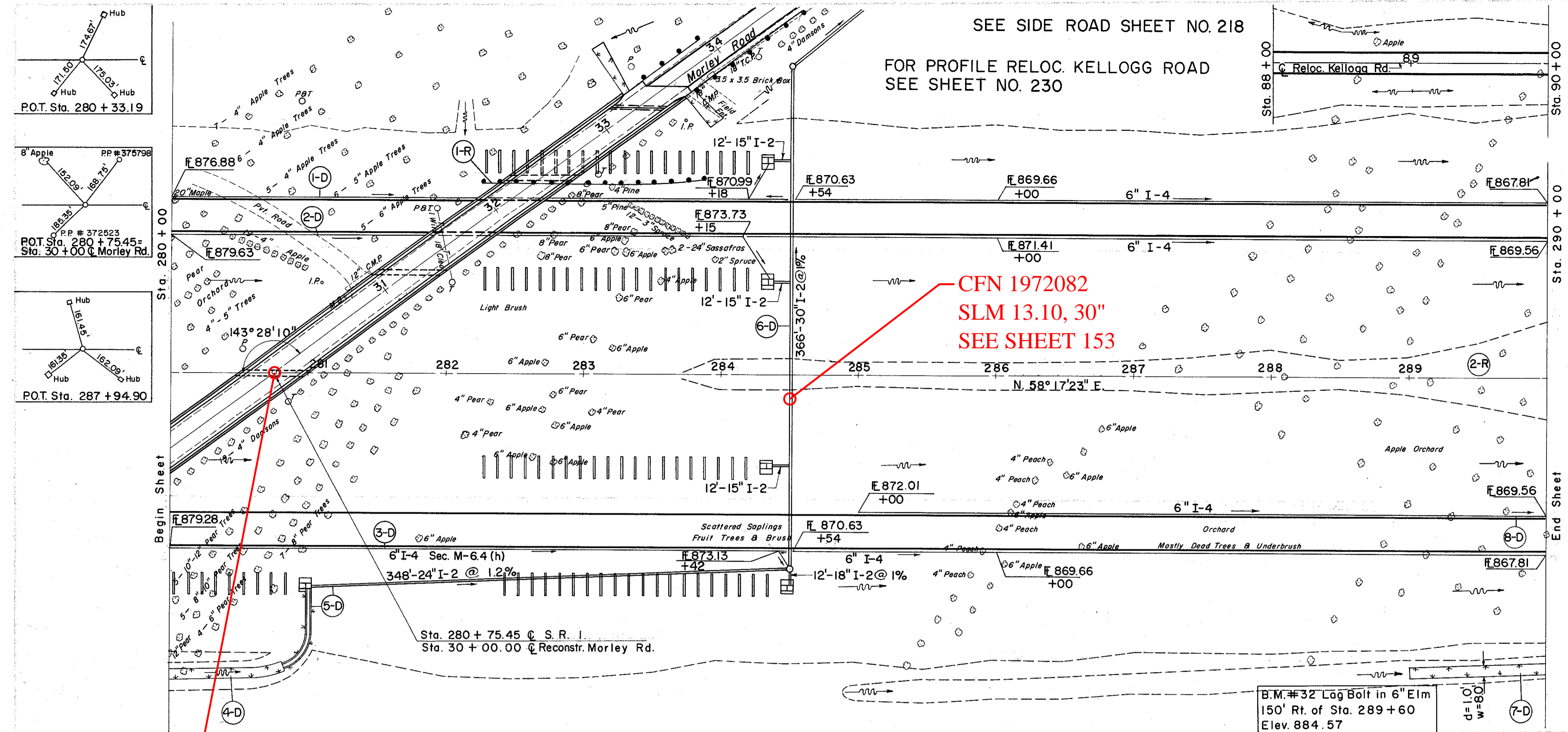


MICROFILMED
JUN 27 1965

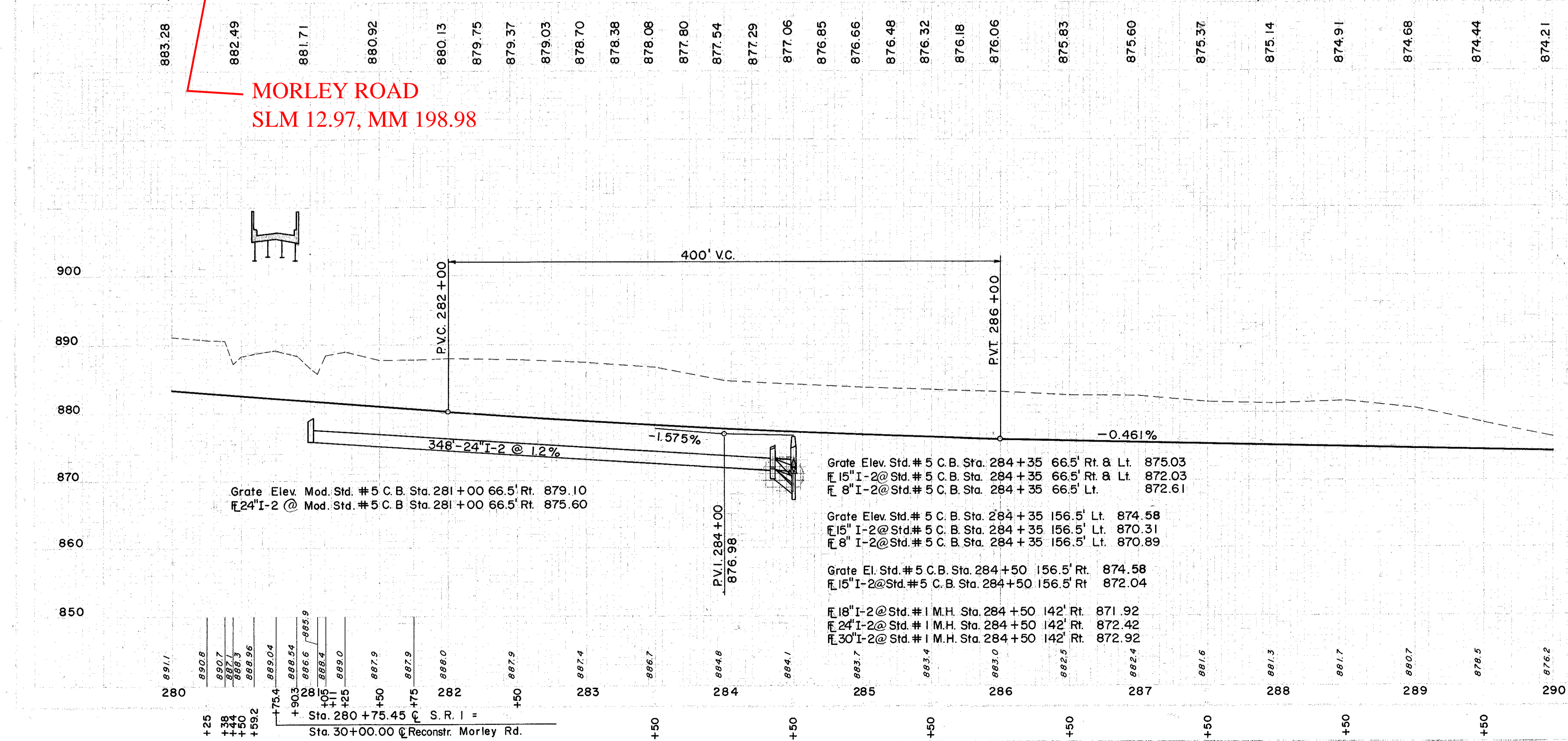
LAKE COUNTY
LAK-I-10.38

SEE SIDE ROAD SHEET NO. 218
FOR PROFILE RELOC. KELLOGG ROAD
SEE SHEET NO. 230



CFN 1972082
SLM 13.10, 30"
SEE SHEET 153

MORLEY ROAD
SLM 12.97, MM 198.98



| | | | |
|---------------------------------------|--------|-----------|--------|
| Grate Elev. Std. # 5 C.B. Sta. 284+35 | 66.5' | Rt. & Lt. | 875.03 |
| 15" I-2@Std. # 5 C.B. Sta. 284+35 | 66.5' | Rt. & Lt. | 872.03 |
| 8" I-2@Std. # 5 C.B. Sta. 284+35 | 66.5' | Lt. | 872.61 |
| Grate Elev. Std. # 5 C.B. Sta. 284+35 | 156.5' | Lt. | 874.58 |
| 15" I-2@Std. # 5 C.B. Sta. 284+35 | 156.5' | Lt. | 870.31 |
| 8" I-2@Std. # 5 C.B. Sta. 284+35 | 156.5' | Lt. | 870.89 |
| Grate El. Std. # 5 C.B. Sta. 284+50 | 156.5' | Rt. | 874.58 |
| 15" I-2@Std. # 5 C.B. Sta. 284+50 | 156.5' | Rt. | 872.04 |
| 18" I-2@Std. # 1 M.H. Sta. 284+50 | 142' | Rt. | 871.92 |
| 24" I-2@Std. # 1 M.H. Sta. 284+50 | 142' | Rt. | 872.42 |
| 30" I-2@Std. # 1 M.H. Sta. 284+50 | 142' | Rt. | 872.92 |

| REF. NO. | STATION | CLASS "A" STORM SEWER SEC. M-6.5 (a) OR M-6.8 (g) OR M-6.8 (h) | I-2 | | I-4 | | I-5 | | I-8 | | I-14 | | L-10 | |
|----------|---------|--|------|-----|---------|------|-----|-----|--------------------------|--------------|--------------------------|---------|------|-----|
| | | | FROM | TO | SHALLOW | DEEP | TEE | WYE | MOD. STD. #5 CATCH BASIN | STD. #1 M.H. | PAVED GUTTER TYPE I MOD. | SODDING | S.Y. | |
| 1-D | 280+00 | 24" | 15" | 18" | 10 | 10 | 10 | 10 | 10 | 10 | 10 | 10 | 10 | 10 |
| 2-D | 280+00 | 24" | 15" | 18" | 1021 | 546 | 446 | 446 | 446 | 446 | 446 | 446 | 446 | 446 |
| 3-D | 280+00 | 24" | 15" | 18" | 348 | 348 | 348 | 348 | 348 | 348 | 348 | 348 | 348 | 348 |
| 4-D | 281+00 | 24" | 15" | 18" | 36 | 36 | 36 | 36 | 36 | 36 | 36 | 36 | 36 | 36 |
| 5-D | 281+00 | 24" | 15" | 18" | 12 | 12 | 12 | 12 | 12 | 12 | 12 | 12 | 12 | 12 |
| 6-D | 284+50 | 24" | 15" | 18" | 500 | 500 | 500 | 500 | 500 | 500 | 500 | 500 | 500 | 500 |
| 7-D | 289+00 | 24" | 15" | 18" | | | | | | | | | | |
| 8-D | 285+00 | 24" | 15" | 18" | | | | | | | | | | |
| | | TOTAL | | | 162.5 | 17 | 17 | 17 | 17 | 17 | 17 | 17 | 17 | 17 |

| REF. NO. | STATION | SIDE BEAM STD. CLEANUP (DEEP) | | TOTAL |
|----------|---------|-------------------------------|----|-------|
| | | FROM | TO | |
| 1-R | 282+25 | 283+87.5 | LT | 162.5 |
| 2-R | 283+50 | 290+00 | LT | 162.5 |
| | | TOTAL | | 17 |

| | |
|--------------------------------------|---------------|
| STA. 88+00 TO STA. 90+00 KELLOGG RD. | |
| EXCAVATION | = 683 C.Y. |
| EMBANKMENT | = 196 C.Y. |
| EMBANKMENT +18% | = 231 C.Y. |
| STA. 280+00 TO STA. 290+00 | |
| EXCAVATION | = 97,207 C.Y. |
| EMBANKMENT | = 0 C.Y. |
| EMBANKMENT +18% | = 0 C.Y. |