

81.0

CUY-90-17.74+  
SLM 17.82, 18"

25  
243

CUYAHOGA COUNTY  
CUY-42R-19.78

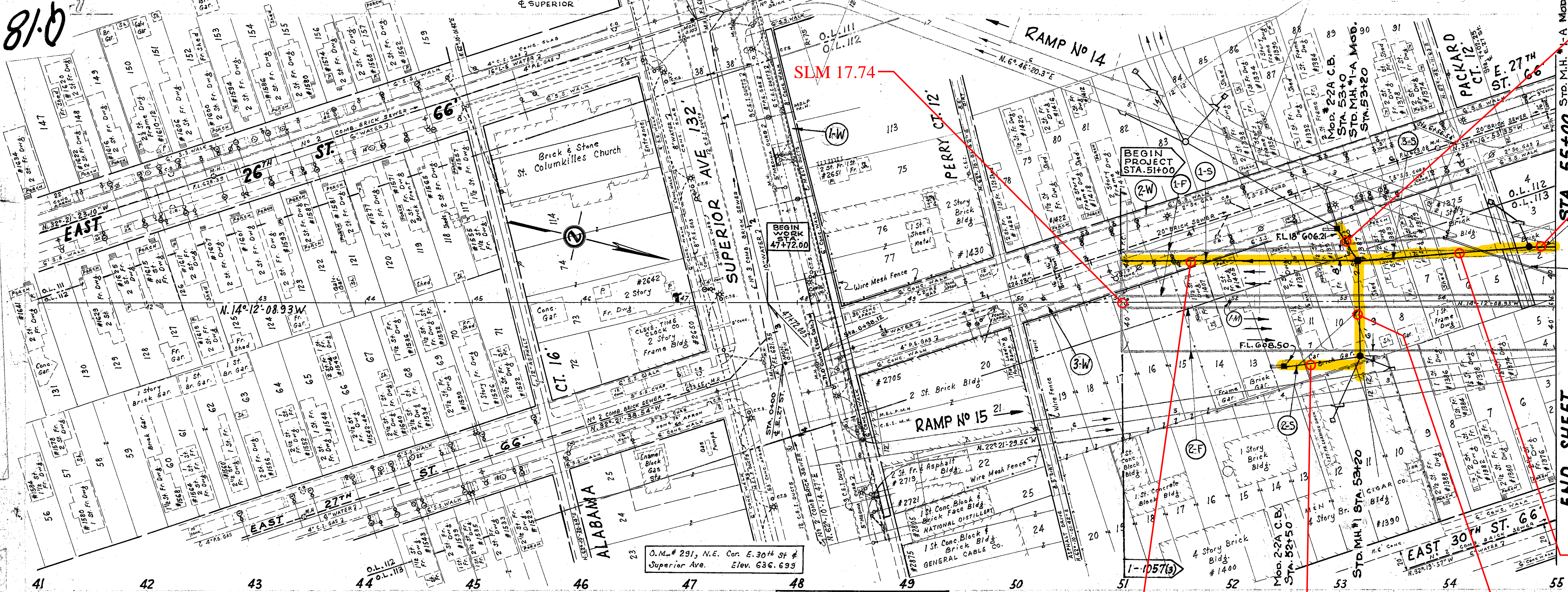
old CFN 18091784  
new CFN 1882326  
SLM 17.86, 54"  
SEE BELOW

TEMPORARY BARRICADE Sta 54+00 to Sta 55+50  
TO BE ERRECTED AND MAINTAINED  
BY THE CITY OF CLEVELAND.

NOTE: Marker will be furnished and erected  
on the right by the State before acceptance  
of this project.

old CFN 18091782  
new CFN 1882331  
SLM 17.82, 54"  
SEE BELOW

END SHEET



SEE CALCULATIONS FOR PAVT.  
& CURB REMOVAL ON  
E. 27 ST. STA. 0+38.12  
TO STA. 1+02.25

MEDIAN  
GUTTERS =  
DATUM

old CFN 18091779  
new CFN 1882330  
SLM 17.79, 48"  
SEE BELOW

SLM 17.82, 12"

SLM 17.82, 15"

BEGIN  
PROJECT  
STA. 51+00

-0.62% GR.

-0.40% GR.

Beginning of Pipe To be Bulkheaded with  
8" Thick Brick Masonry Wall or Equivalent.  
Cost To Be Included in the Unit Price  
Bid For Item 1-5.

SIDEWALKS					
Ref. No	Station		SIDE LEFT OR RIGHT	ITEM E-8	ITEM I-13
	FROM	TO		REMOVAL AND DISPOSAL OF EXIST. WALK	4" PORTLAND CEMENT CONCRETE WALK
				SQ. FT.	SQ. FT.
1-W	0+26	5+21	L	3286.3	6'
2-W	0+27	6+25	L	3241.0	
3-W	0+21	6+66	R	3573.0	
<b>TOTALS</b>				<b>10,100.3</b>	<b>2718.0</b>

DRIVEWAY QUANTITIES				
Station	E-8	E-1	I-11	I-9
	Removal & Disposal of Pavements	Embankment To Replace Pavement	6"x16" S.S. Curb 1" Bullnose	Sealing & Protecting
	Sq. Yds.	Cu. Yds.	Lin. Ft.	Sq. Yds.
Sta. 0+23 to 0+25	87			
Between E. 27th & E. 28th North Side Superior	59.1	13.3	38	59.1
<b>TOTALS</b>	<b>146.1</b>	<b>13.3</b>	<b>38</b>	<b>59.1</b>

MONUMENT BOXES		
Item No.	Station	Monument Box Assembly
		Type A
1-M	52+00	1
<b>Totals</b>		<b>1</b>

6" UNDERDRAINS					
Ref. No.	Station	Side Rt. or Lt.	I-4 Lin. Ft.		
			Curb 5'-0" Deep	Curb 3'-9" Deep	5'-0" Deep
1-F	51+0	R	70	400	232
2-F	51+0	R	130	400	270
<b>TOTALS</b>			<b>200</b>	<b>800</b>	<b>502</b>

STORM SEWERS										
Ref. No.	Station	Side Rt. or Lt.	Under Pavt. 15" Lin. Ft.	Under Pavt. 18" Lin. Ft.	Std. M.H. #1	Std. M.H. #2	I-14	Location of Structure		
								Sores	Paved Gutters	
1-S	51+0	L	218		1	10	50-50:53+20			
2-S	52+50	L	86		1	10	53+20:54+75			
3-S	53+20	L	32		1	10	54+75:55+0			
4-S	54+75	L	23		1	10	55+0:54+75			
<b>TOTALS</b>							<b>67</b>	<b>86</b>	<b>32</b>	<b>174</b>