

old CFN 432710132
 new CFN 1843325
 SLM 1.32, 42"
 SEE BELOW
 AND SHEET 159
 EDDY ROAD
 SLM 1.27 = MM 39.74

REMOVED
 SLM 1.26, 21"
 SEE SHEET 156
 SEE 1993 UPGRADE
 SHTS 39 AND 72

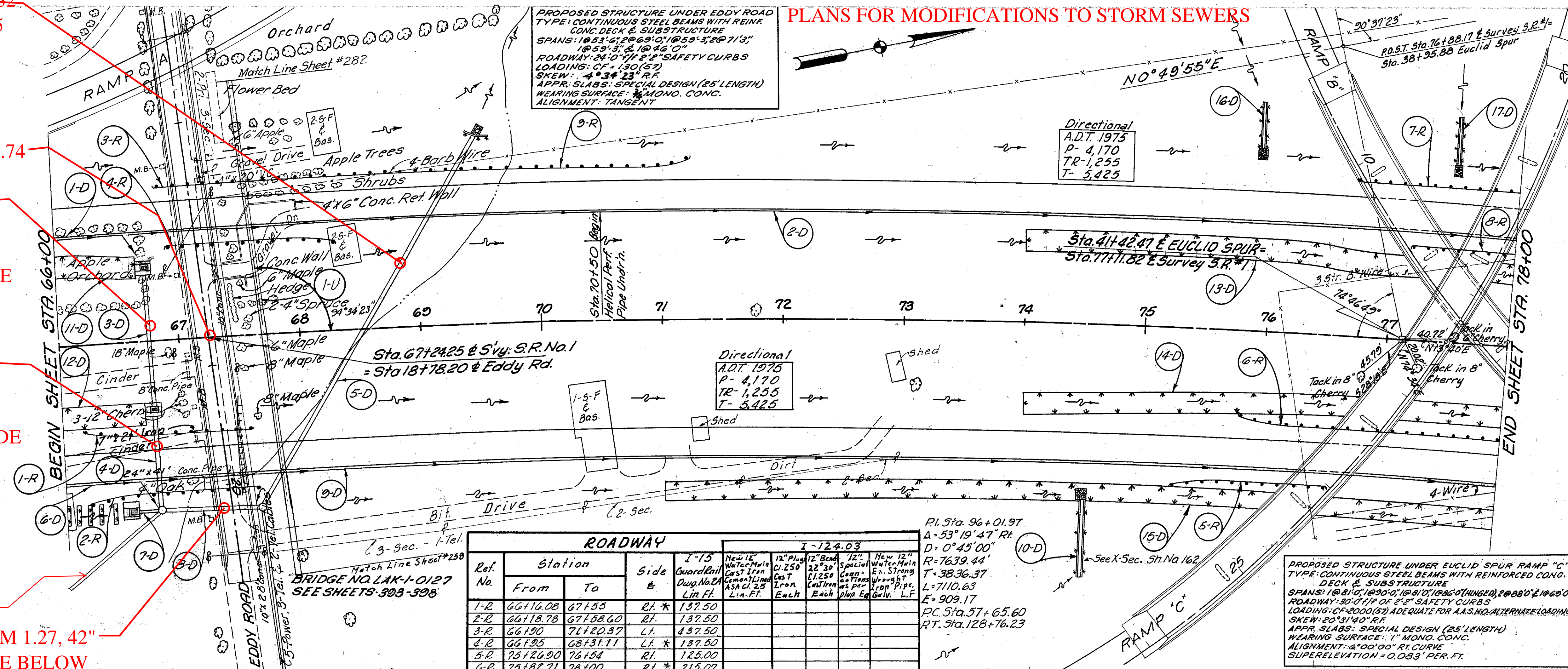
CFN 1971779
 SLM 1.26, 27"
 SEE SHEET 156
 SEE 1993 UPGRADE
 SHTS 39 AND 72

CFN 1958505
 SLM 1.26, 24"
 SEE SHEET 301
 AND 310
 SLM 1.27, 42"
 SEE BELOW

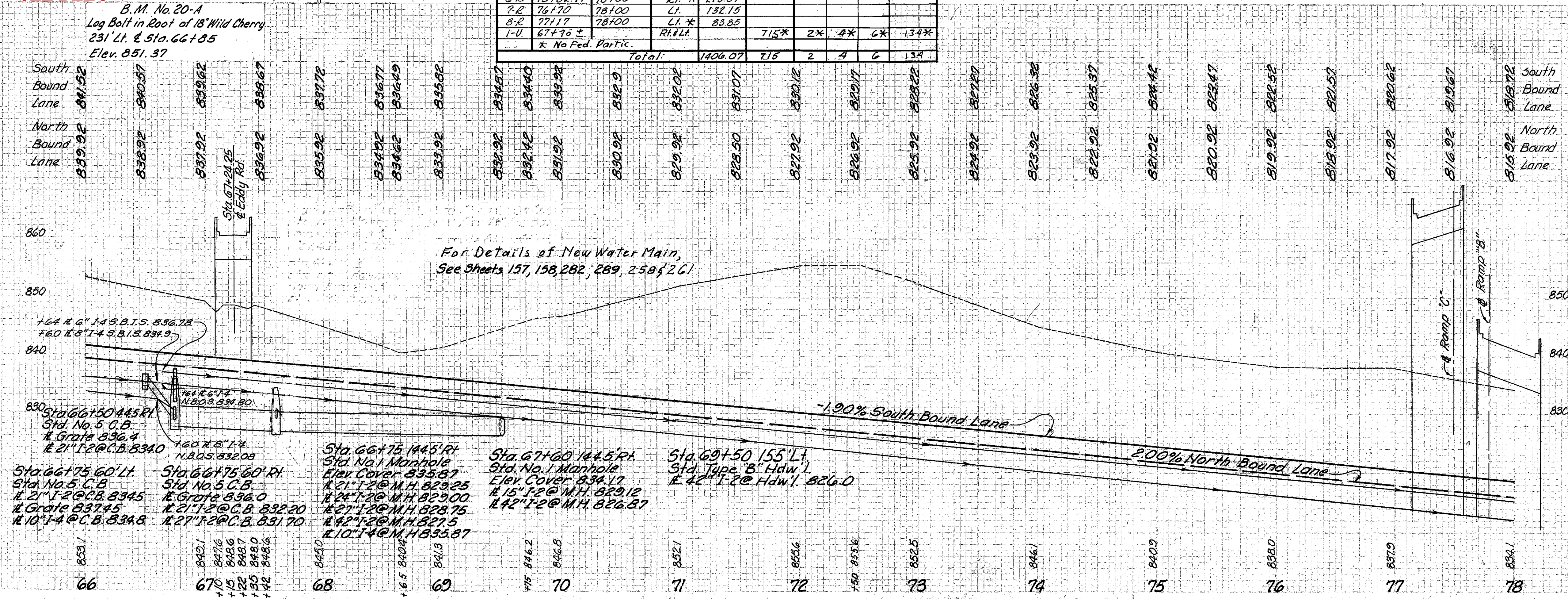
SEE 1993 CUY/LAK-271/90/271X/90X-14.85/2.76/0.00/2.76
 PLANS FOR MODIFICATIONS TO STORM SEWERS

FED. RD. DIVISION	STATE	PROJECT	
2	OHIO	I-1103 (B)	47 458

CUYAHOGA & LAKE COUNTIES
 CUY-I-15.9I
 LAK-I-0.00



ROADWAY		I-124.03					
Ref. No.	Station	Side	I-15	12" Plg. 12" Beam	12" Plg. 12" Beam	12" Plg. 12" Beam	12" Plg. 12" Beam
1-R	66+16.08	RT *	137.50				
2-R	66+18.78	RT	137.50				
3-R	66+19.0	LT	137.50				
4-R	66+25	LT *	137.50				
5-R	75+26.90	RT	128.00				
6-R	75+28.71	RT *	128.00				
7-R	76+170	LT	132.15				
8-R	77+17	LT *	88.85				
1-U	67+70 ±	RT & LT		715*	2*	4*	6*
Total:			1406.07	715	2	4	6



See Sheet No.	Station	From	To	Side	Excavation for Structures		Class 'A' Storm Sewer under Pavement or Approaches		Pipe Outlets for Underdrain		Pipe Specials for Underdrains		Standard No. 5 Catch Basins		Standard No. 1 Manhole		Dumped Rock		Paved Buffer		Sodding		Concrete Structures		Reinforcing Steel	
					Excavation	Structure	Sec. M.G.(A)	Sec. M.G.(B)	Sec. M.G.(A)	Sec. M.G.(B)	Sec. M.G.(A)	Sec. M.G.(B)	Sec. M.G.(A)	Sec. M.G.(B)	Sec. M.G.(A)	Sec. M.G.(B)	Sec. M.G.(A)	Sec. M.G.(B)	Sec. M.G.(A)	Sec. M.G.(B)	Sec. M.G.(A)	Sec. M.G.(B)	Sec. M.G.(A)	Sec. M.G.(B)	Sec. M.G.(A)	Sec. M.G.(B)
1-D	66+10	66+10	66+10	LT																						
2-D	66+18	66+18	66+18	RT																						
3-D	66+19	66+19	66+19	LT																						
4-D	66+25	66+25	66+25	LT *																						
5-D	75+26	75+26	75+26	RT																						
6-D	75+28	75+28	75+28	RT *																						
7-D	76+17	76+17	76+17	LT																						
8-D	77+17	77+17	77+17	LT *																						
1-U	67+70	67+70	67+70	RT & LT																						
Totals																										

REVISIONS:
 13-31-60 Grade Raise for 16" Dr. C.I.

MICHAEL BAKER, JR., CONSULTING ENGINEERS
 ROCHESTER, PENNSYLVANIA

STATE OF OHIO
 DEPARTMENT OF HIGHWAYS
 STATE HIGHWAY NO. 1
 C-42
 PLAN AND PROFILE
 STA. 66+00 TO STA. 78+00

Designed	Drawn	Traced	Checked	Reviewed Date	Revised
B.P.	L.W.	A.G.	L.I.		11-24-61 11-15-60 REC

PLAN & PROFILE STA. 66+00 - STA. 78+00